



REPORT No.: SZ2210011HS01

Annex C Plots of System Performance Check

System Check_750MHz

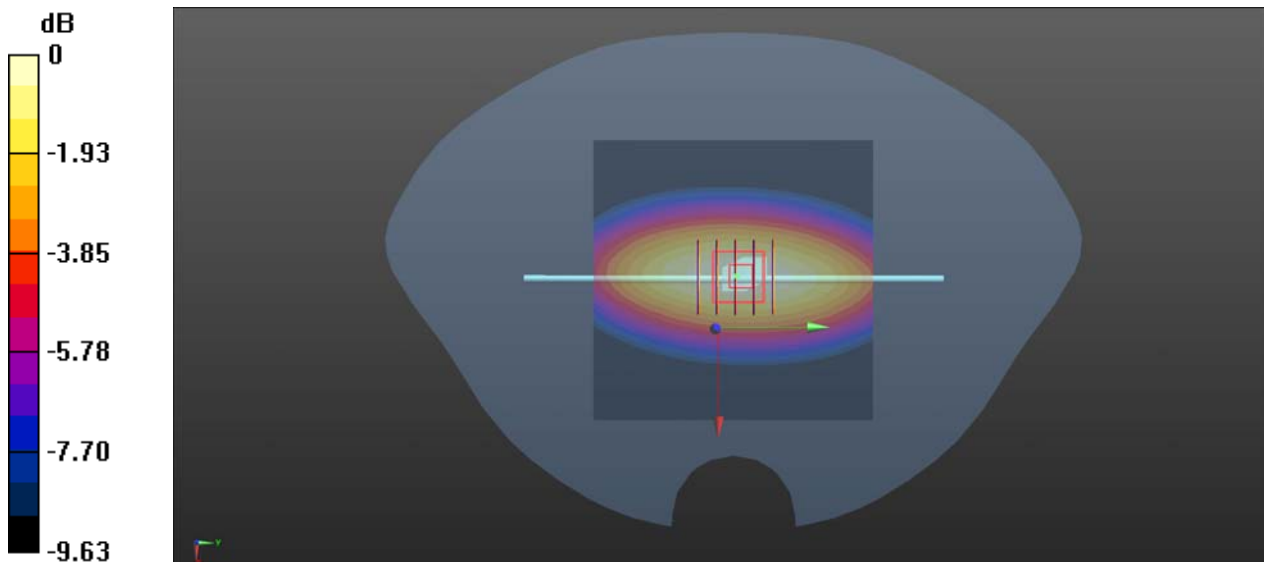
Communication System: UID 0, CW (0); Frequency: 750 MHz; Duty Cycle: 1:1
Medium: HSL_750 Medium parameters used: $f = 750 \text{ MHz}$; $\sigma = 0.914 \text{ S/m}$; $\epsilon_r = 40.956$; $\rho = 1000 \text{ kg/m}^3$
Ambient Temperature : 23.2 °C; Liquid Temperature : 22.1 °C

DASY5 Configuration:

- Probe: ES3DV3 - SN7608; ConvF(10.2, 10.2, 10.2) @ 750 MHz; Calibrated: 2022.01.12
- Sensor-Surface: 2mm (Mechanical Surface Detection)
- Electronics: DAE4 Sn1643; Calibrated: 2021.12.30
- Phantom: SAM 2; Type: QD000P40CC; Serial: TP:1464
- Measurement SW: DASY52, Version 52.8 (8); SEMCAD X Version 14.6.14 (7483)

CW750/Area Scan (81x81x1): Interpolated grid: $dx=1.500 \text{ mm}$, $dy=1.500 \text{ mm}$
Maximum value of SAR (interpolated) = 2.31 W/kg

CW750/Zoom Scan (5x5x7)/Cube 0: Measurement grid: $dx=8\text{mm}$, $dy=8\text{mm}$, $dz=5\text{mm}$
Reference Value = 51.98 V/m; Power Drift = 0.03 dB
Peak SAR (extrapolated) = 3.12 W/kg
SAR(1 g) = 2.18 W/kg; SAR(10 g) = 1.41 W/kg
Smallest distance from peaks to all points 3 dB below: Larger than measurement grid
Ratio of SAR at M2 to SAR at M1 = 69%
Maximum value of SAR (measured) = 2.30 W/kg



0 dB = 2.30 W/kg