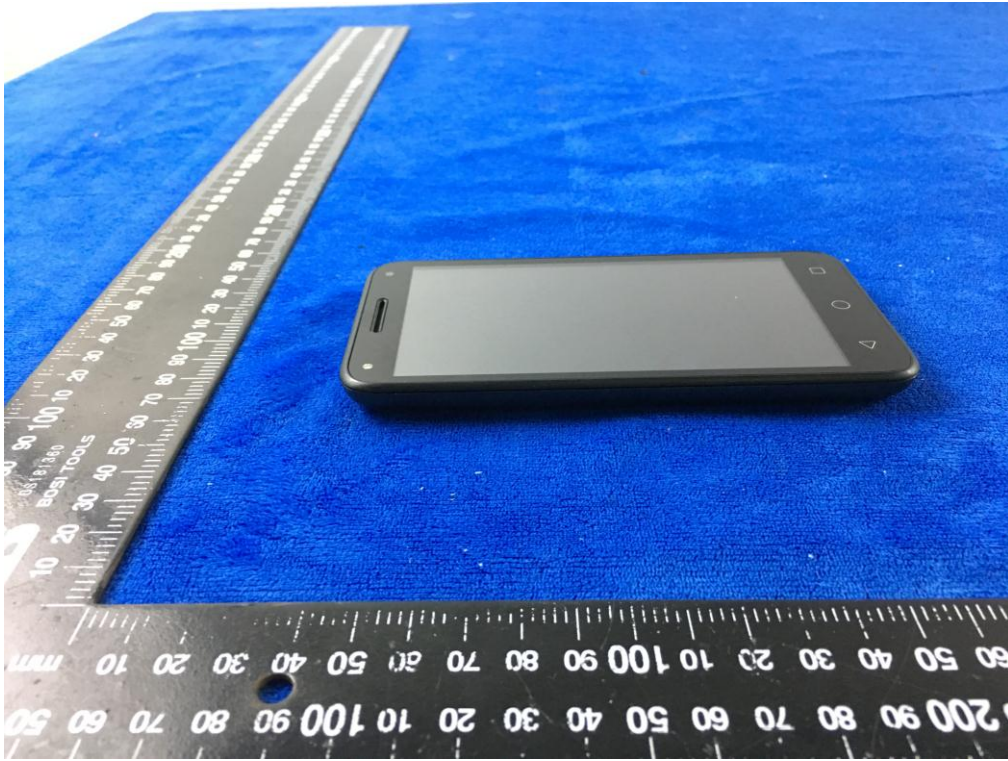


EUT - Left View



EUT - Right View



Annex B.ii. Photograph: EUT Internal Photo

Cover Off - Top View 1



Cover Off - Top View 2



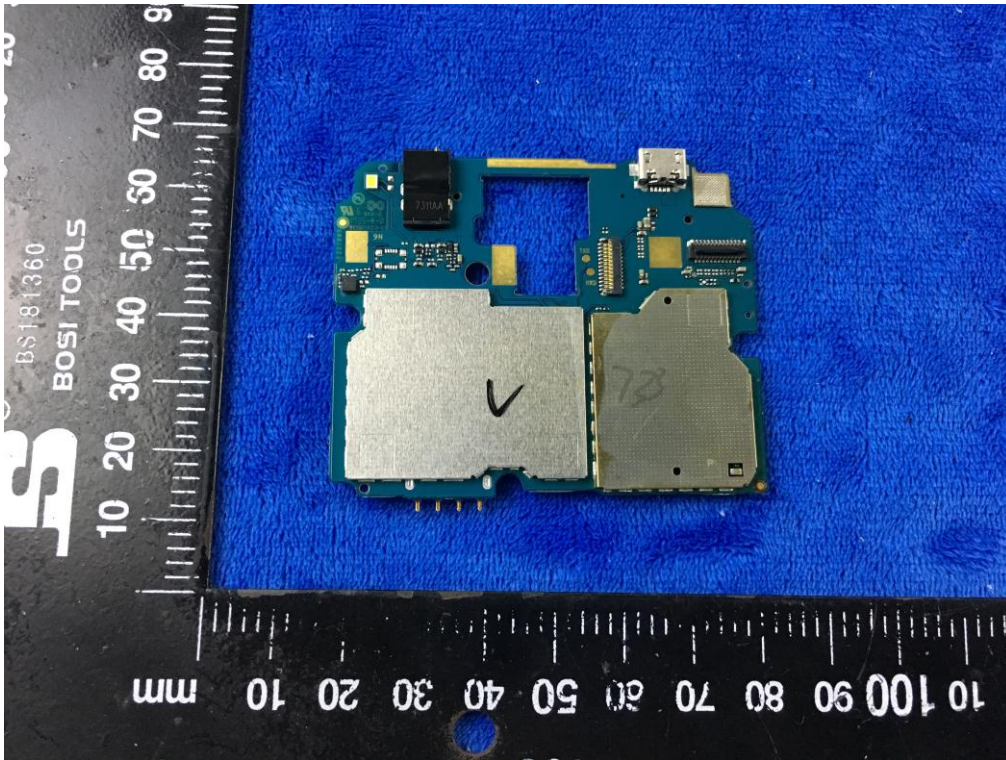
Battery - Front View



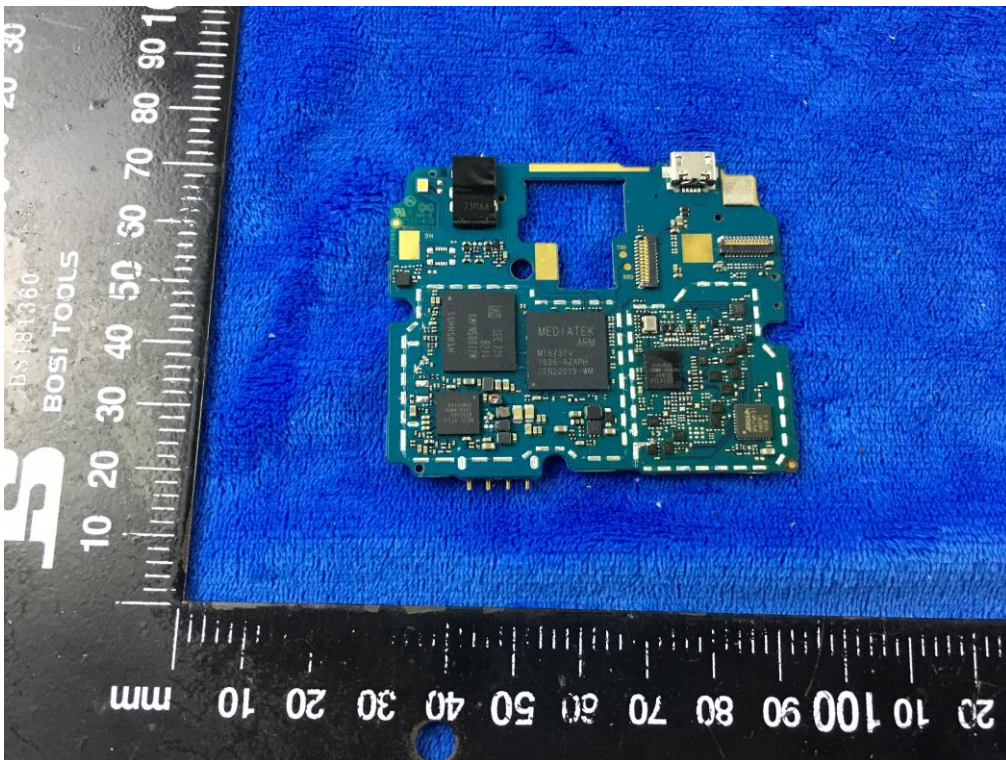
Battery - Rear View



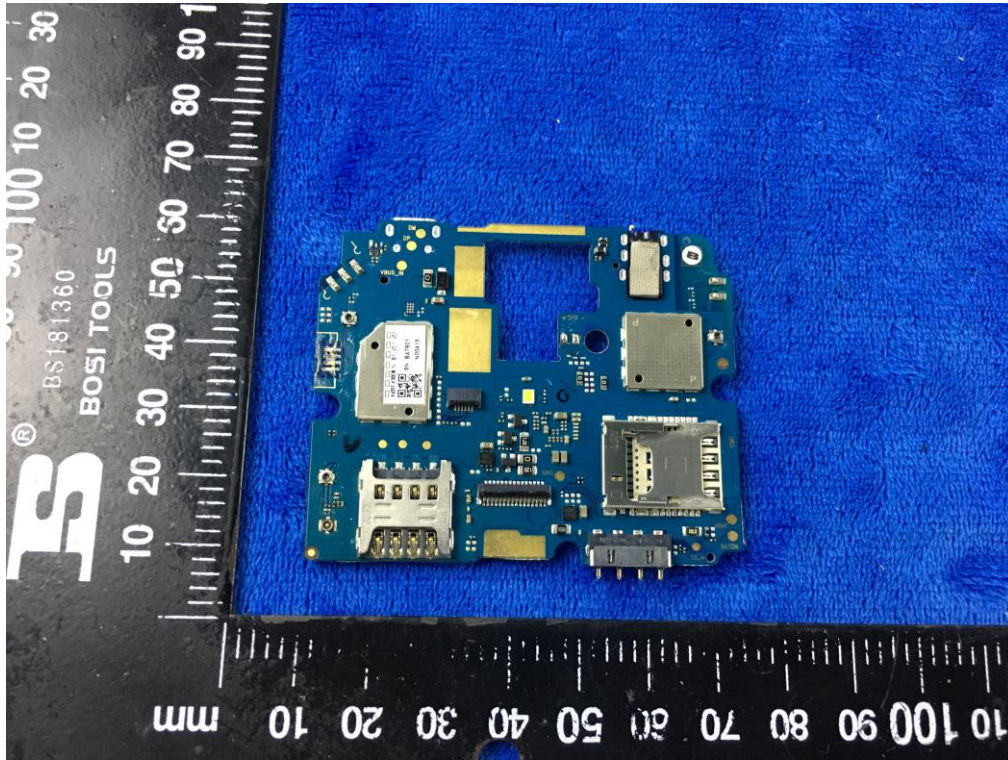
Mainboard with Shielding - Front View



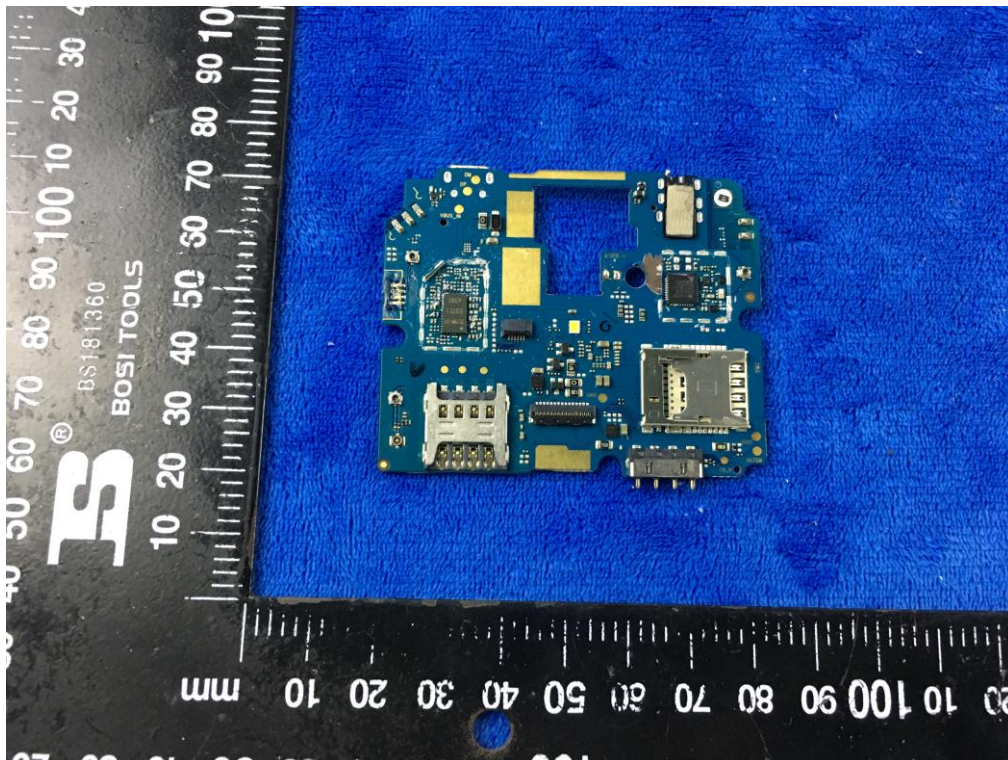
Mainboard without Shielding - Front View



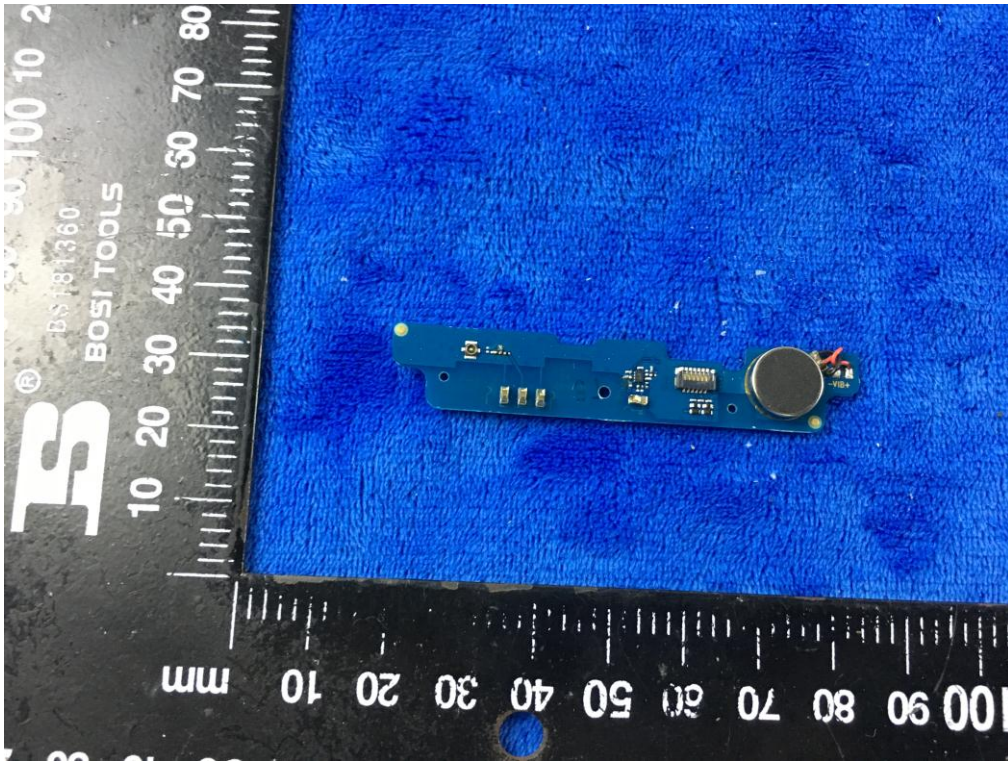
Mainboard with Shielding – Rear View



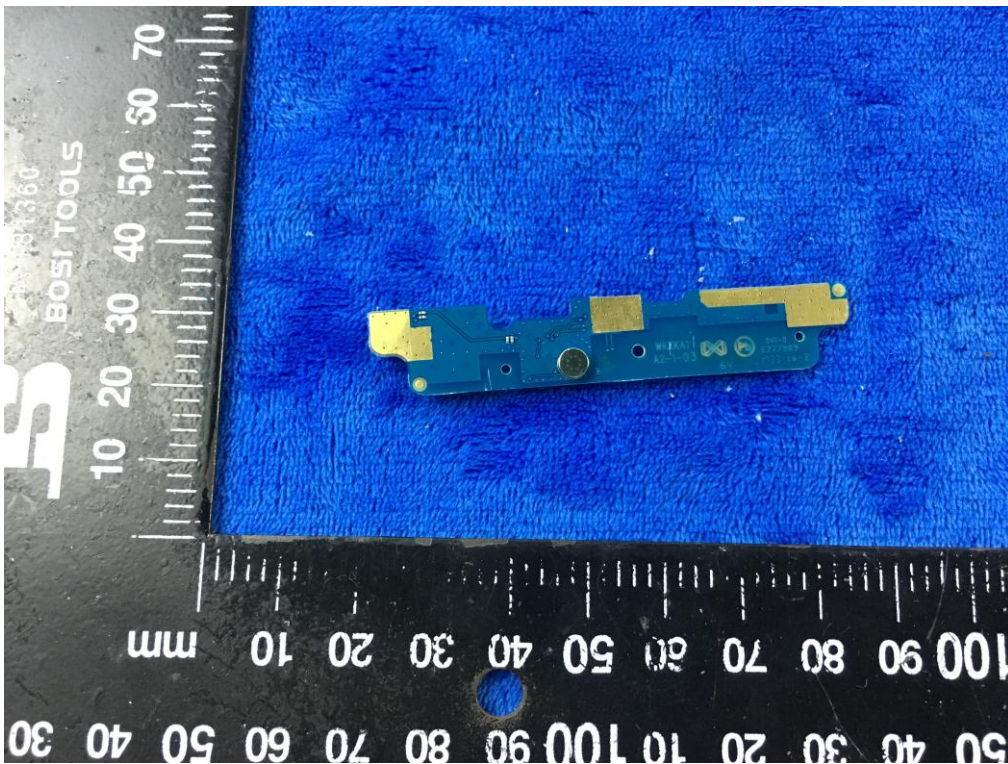
Mainboard without Shielding – Rear View



Smallboard – Front View



Smallboard – Rear View



LCD – Front View



LCD – Rear View



GSM/PCS/UMTS-FDD/LTE Antenna View



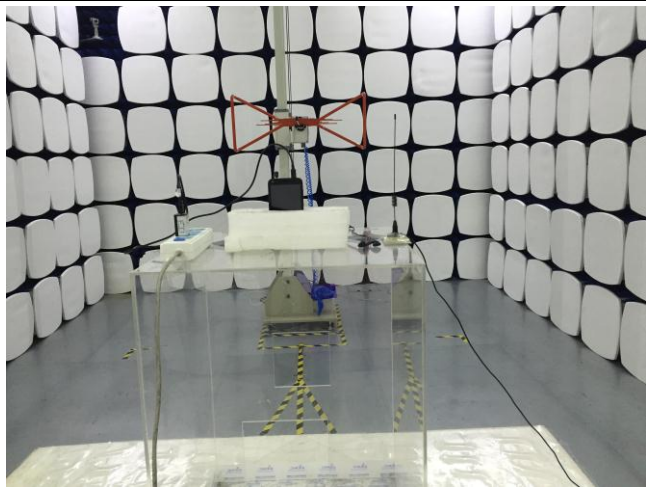
WIFI/BT/BLE/GPS - Antenna View



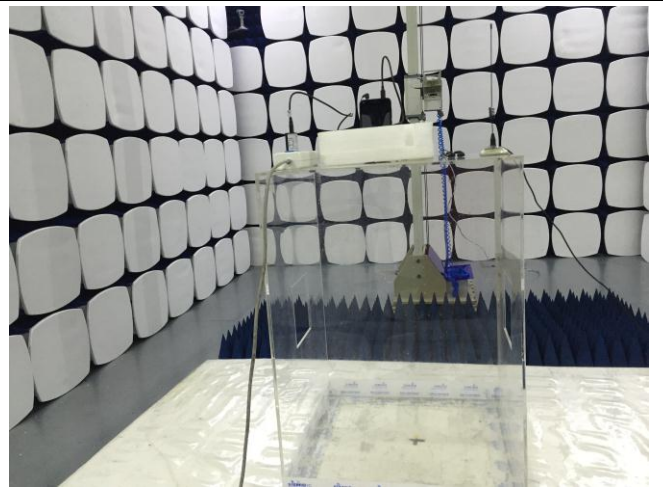
RXD- Antenna View



Annex B.iii. Photograph: Test Setup Photo



Radiated Spurious Emissions Test Setup Below 1GHz

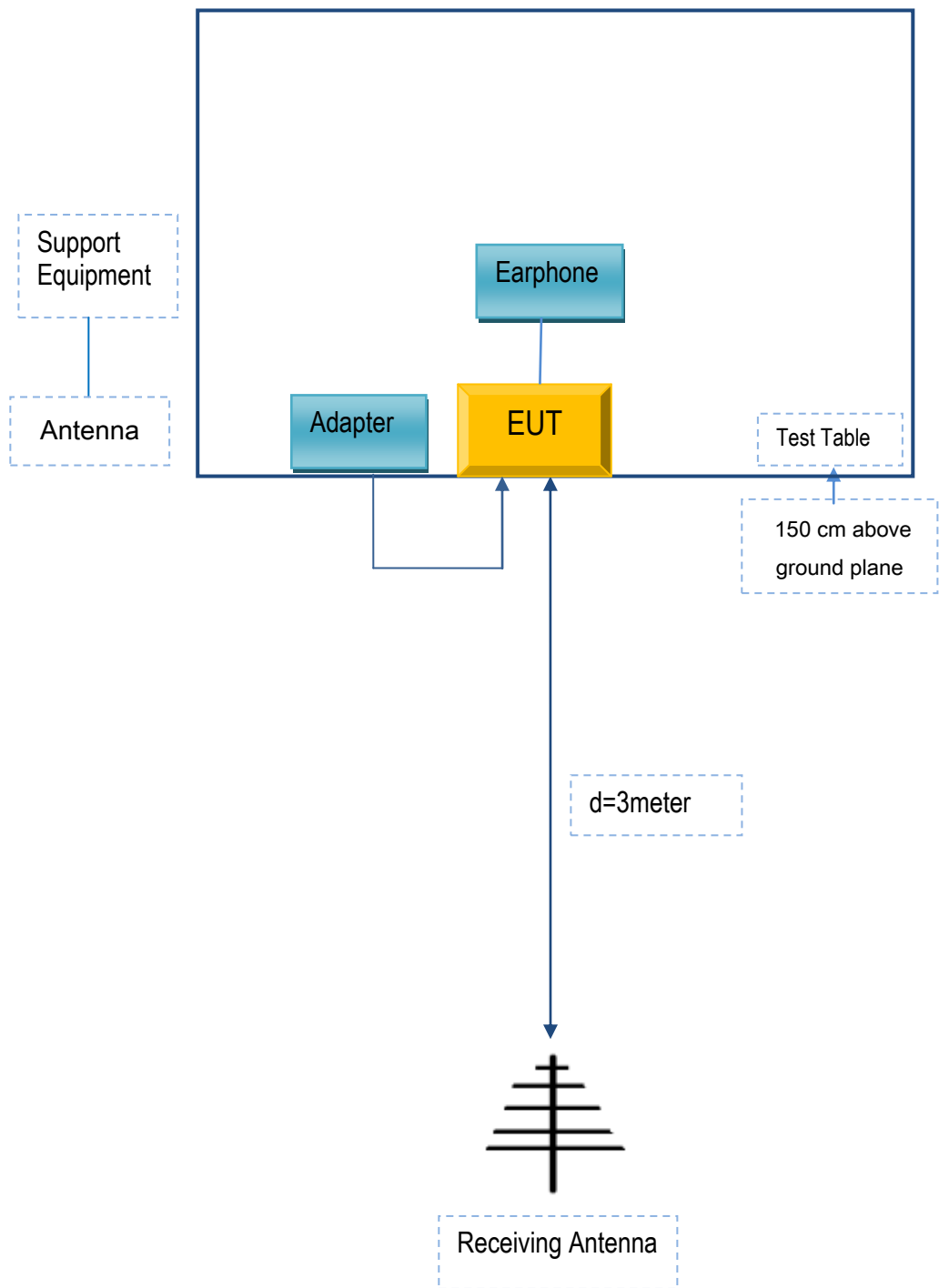


Radiated Spurious Emissions Test Setup Above
1GHz

Annex C. TEST SETUP AND SUPPORTING EQUIPMENT

Annex C.ii. TEST SET UP BLOCK

Block Configuration Diagram for Radiated Emissions



Annex C. ii. SUPPORTING EQUIPMENT DESCRIPTION

The following is a description of supporting equipment and details of cables used with the EUT.

Supporting Equipment:

Manufacturer	Equipment Description	Model	Serial No
BLU Products, Inc.	Adapter	TPA-46B050070UU	N/A
BLU Products, Inc.	Earphone	DASH L5 LTE	N/A

Supporting Cable:

Cable type	Shield Type	Ferrite Core	Length	Serial No
USB Cable	Un-shielding	No	0.8m	N/A

Annex C.ii. EUT OPERATING CONKITIONS

N/A

Test Report	17070978-FCC-R1
Page	105 of 106

Annex D. User Manual / Block Diagram / Schematics / Partlist

Please see the attachment

Annex E. DECLARATION OF SIMILARITY

BLU Products, Inc.

To: SIEMIC,775MontagueExpressway,Milpitas,CA95035,USA

Declaration Letter

Dear Sir,


For our business issue and marketing requirement, we would like to list 2 model numbers on the FCC certificates and reports, as following:

Model No.:DASH L5 LTE,DASH L5X

We declare that, all the model PCB, Antenna and Appearance shape, accessories are the same. The difference of these is listed as below:

Main Model No.	Serial Model No.	Difference
DASH L5 LTE	DASH L5X	Different model name

Thank you!

Signature: 

Printed name/title: Zeng wei

Address: Address :10814 NW 33rd St # 100 Doral, FL 33172