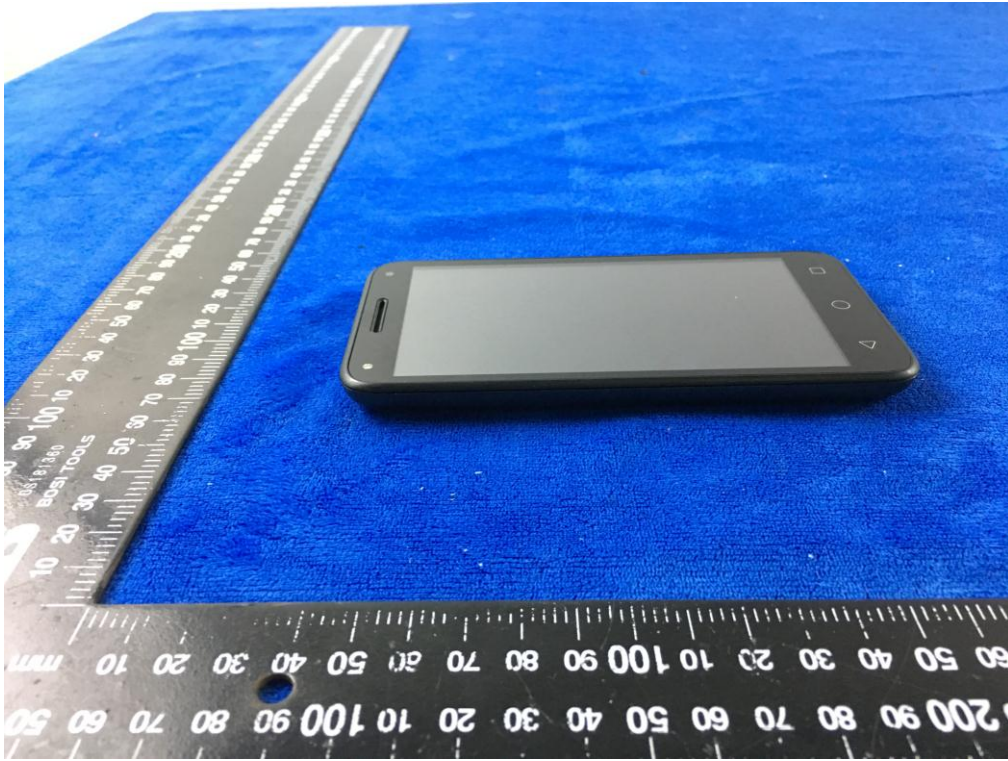


EUT - Left View



EUT - Right View





**Annex B.ii. Photograph: EUT Internal Photo**

Cover Off - Top View 1



Cover Off - Top View 2





Battery - Front View

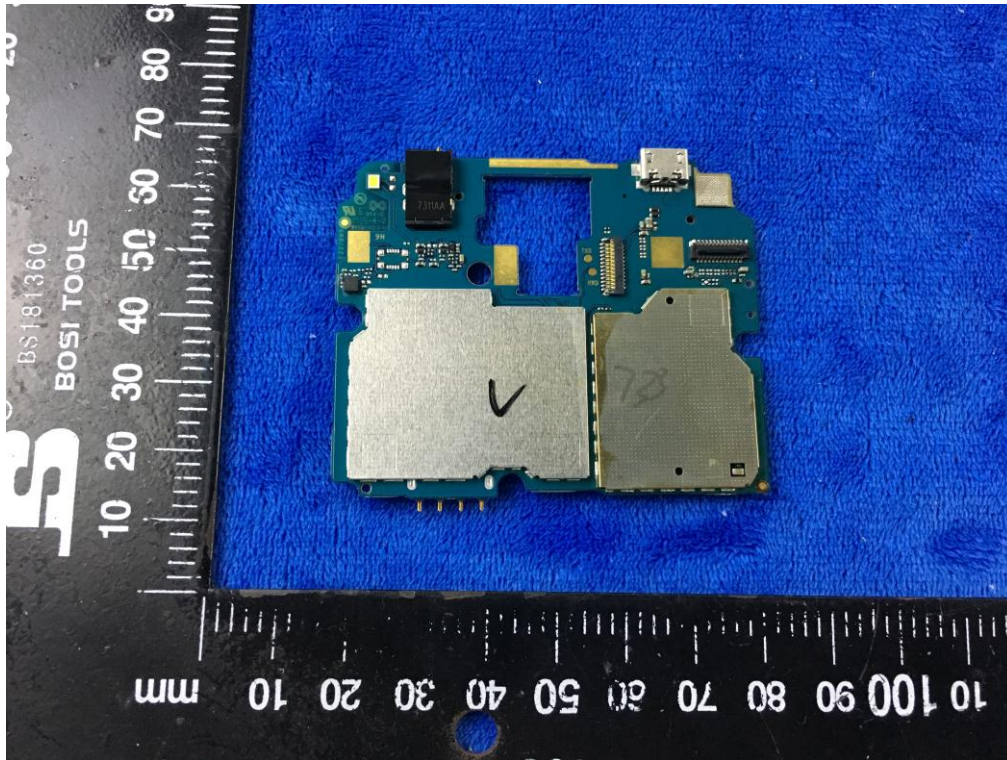


Battery - Rear View

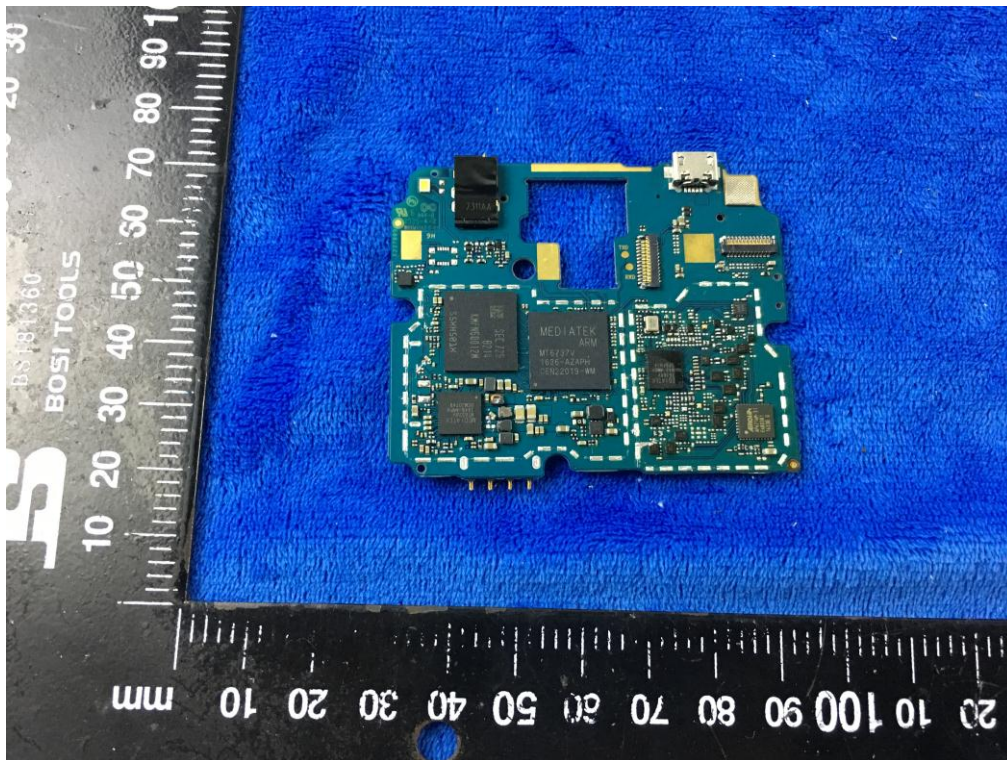




Mainboard with Shielding - Front View

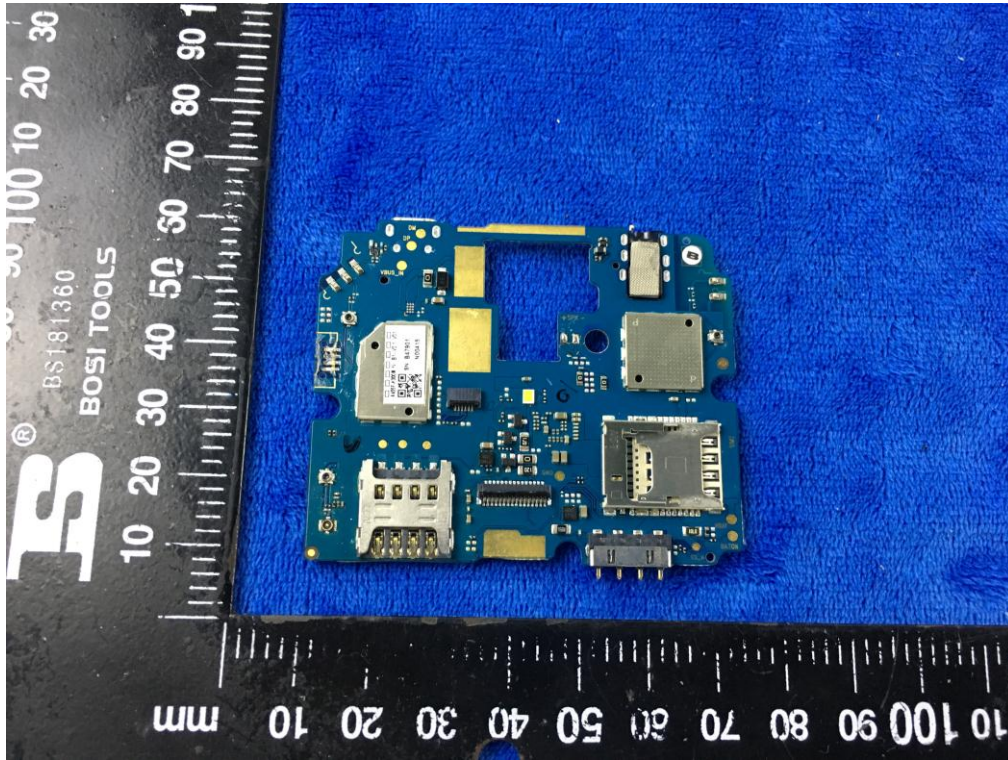


Mainboard without Shielding - Front View

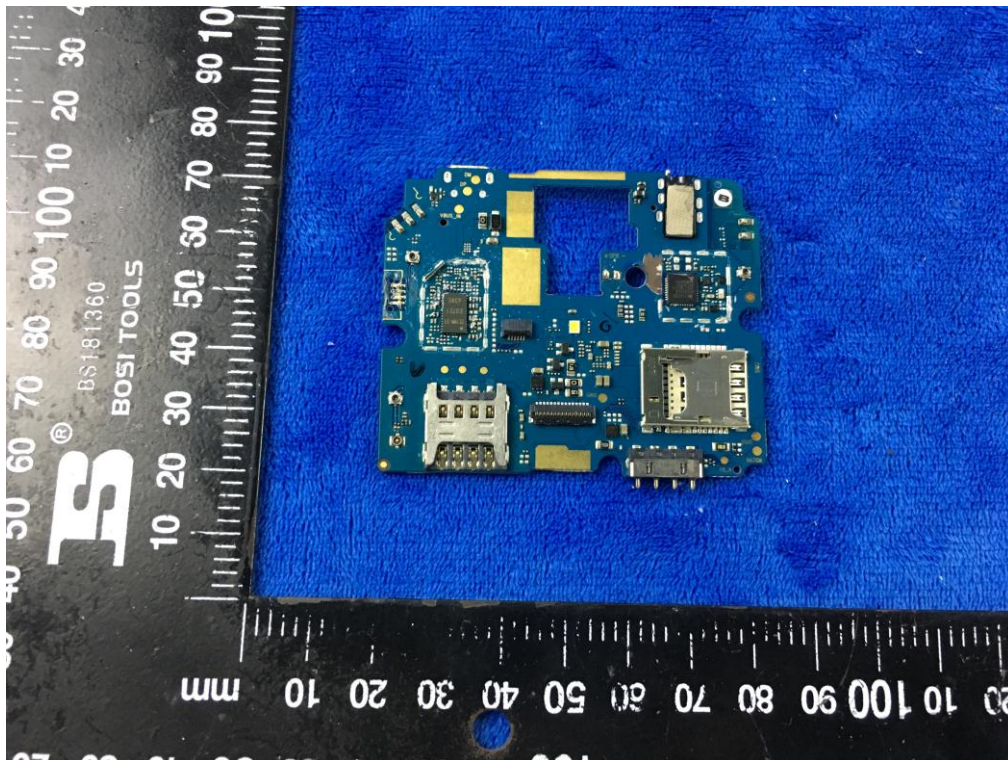




Mainboard with Shielding – Rear View

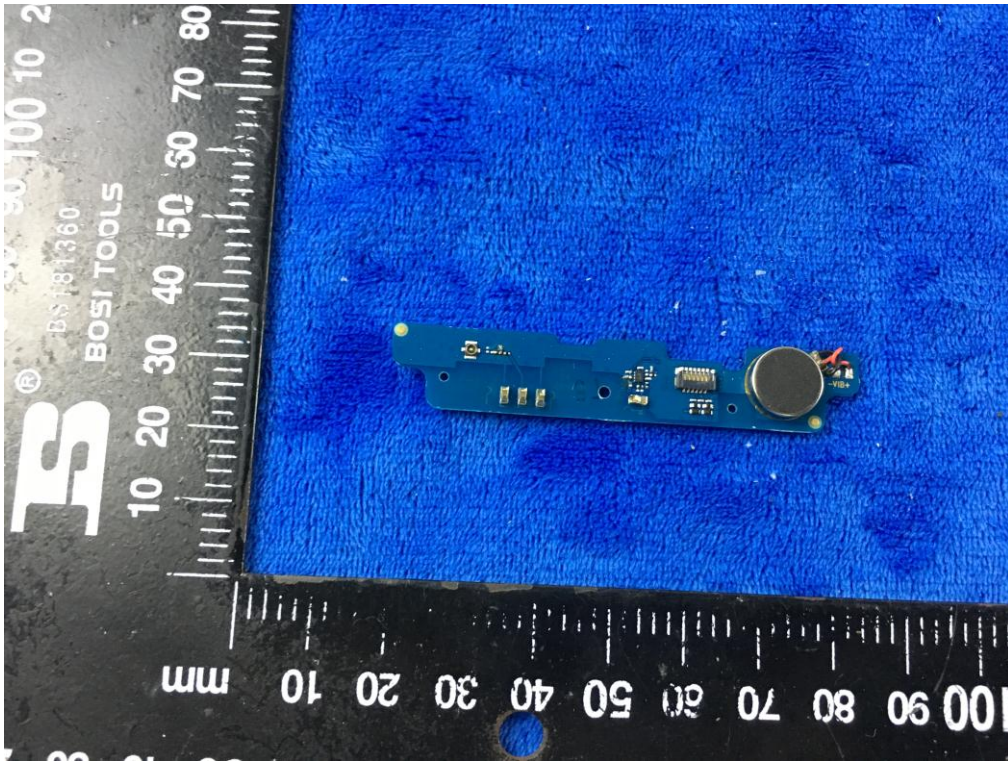


Mainboard without Shielding – Rear View

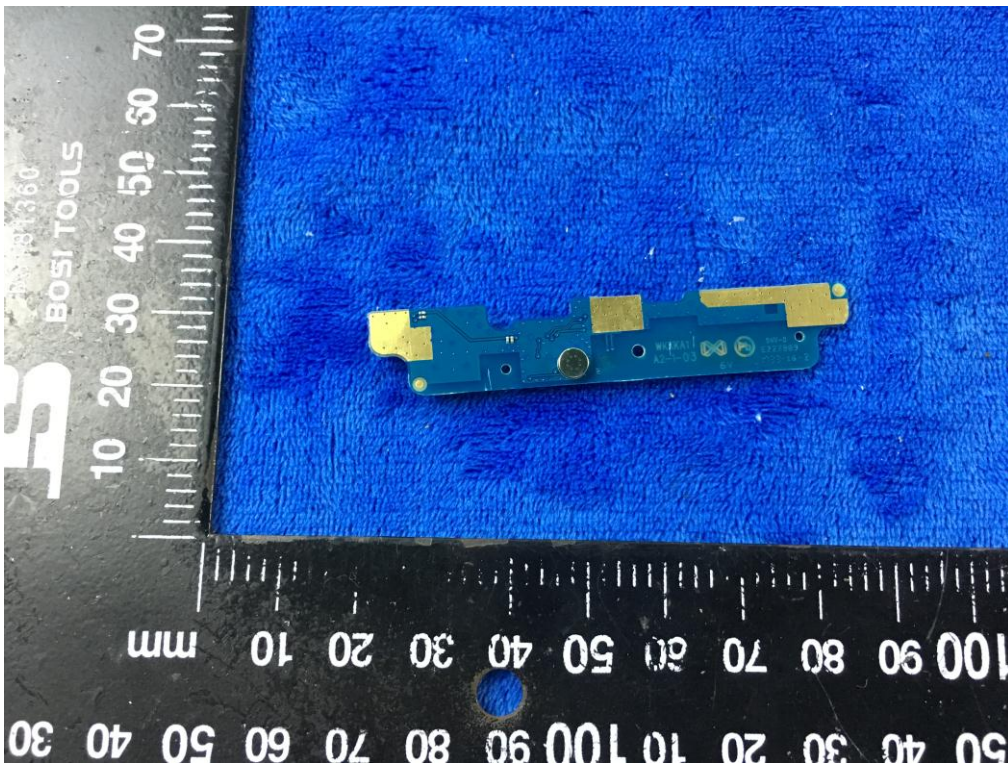




Smallboard – Front View



Smallboard – Rear View





LCD – Front View



LCD – Rear View





GSM/PCS/UMTS-FDD/LTE Antenna View



WIFI/BT/BLE/GPS - Antenna View





RXD - Antenna View





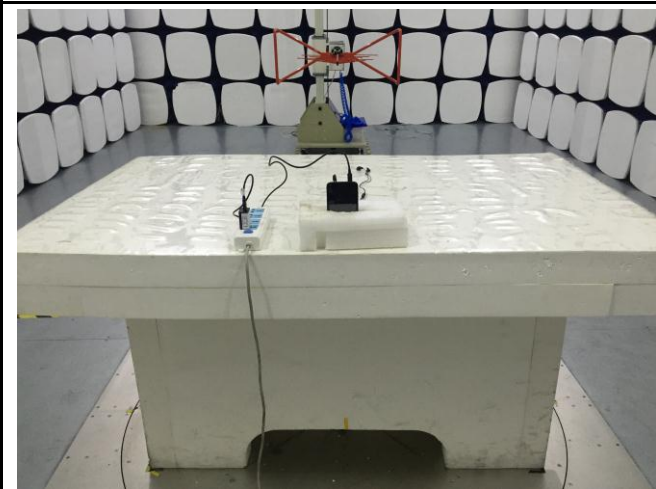
**Annex B.iii. Photograph: Test Setup Photo**



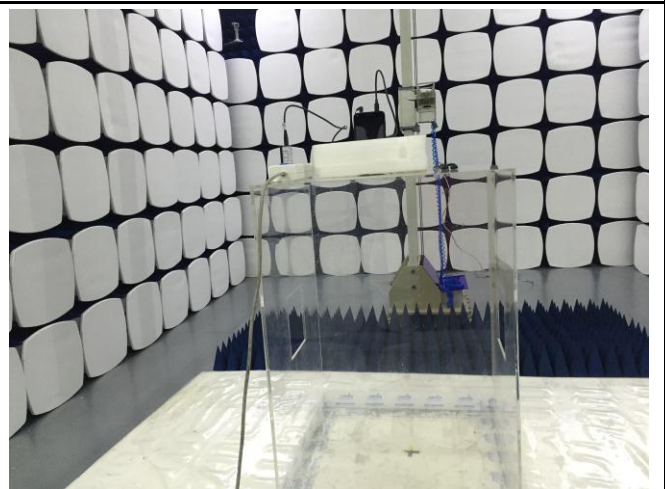
Conducted Emissions Test Setup Front View



Conducted Emissions Test Setup Side View



Radiated Spurious Emissions Test Setup Below 1GHz



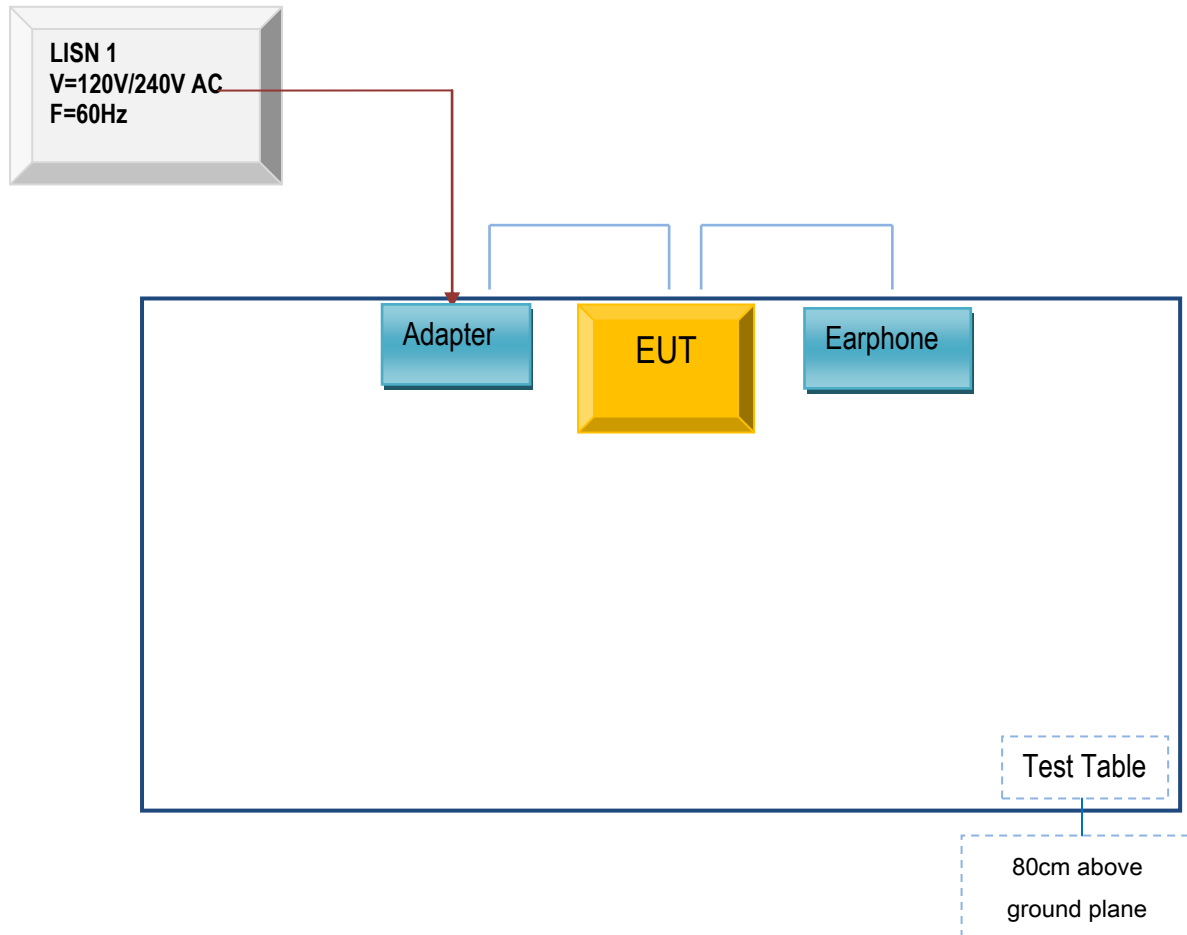
Radiated Spurious Emissions Test Setup Above  
1GHz



## Annex C. TEST SETUP AND SUPPORTING EQUIPMENT

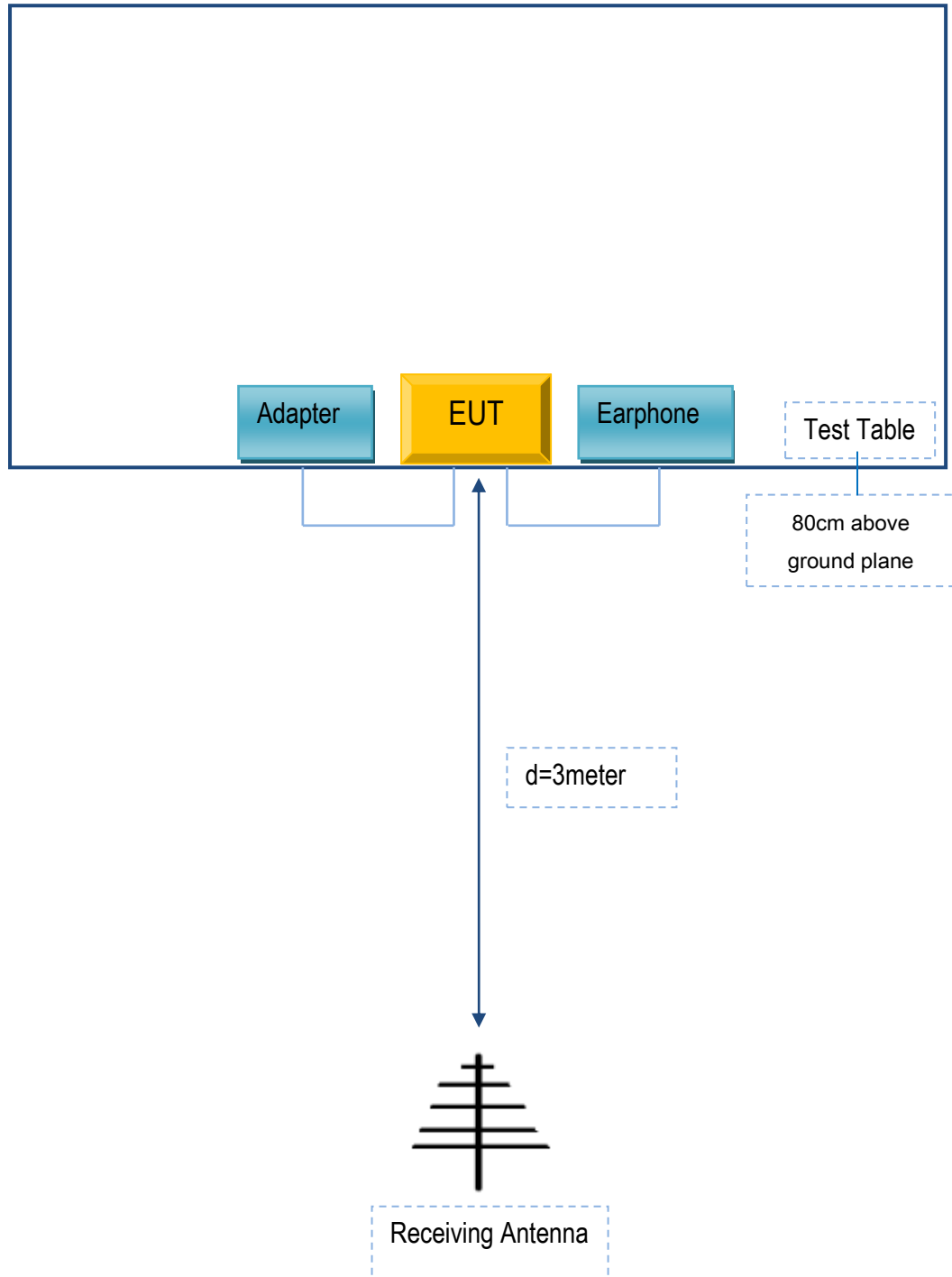
### Annex C.ii. TEST SET UP BLOCK

#### Block Configuration Diagram for AC Line Conducted Emissions



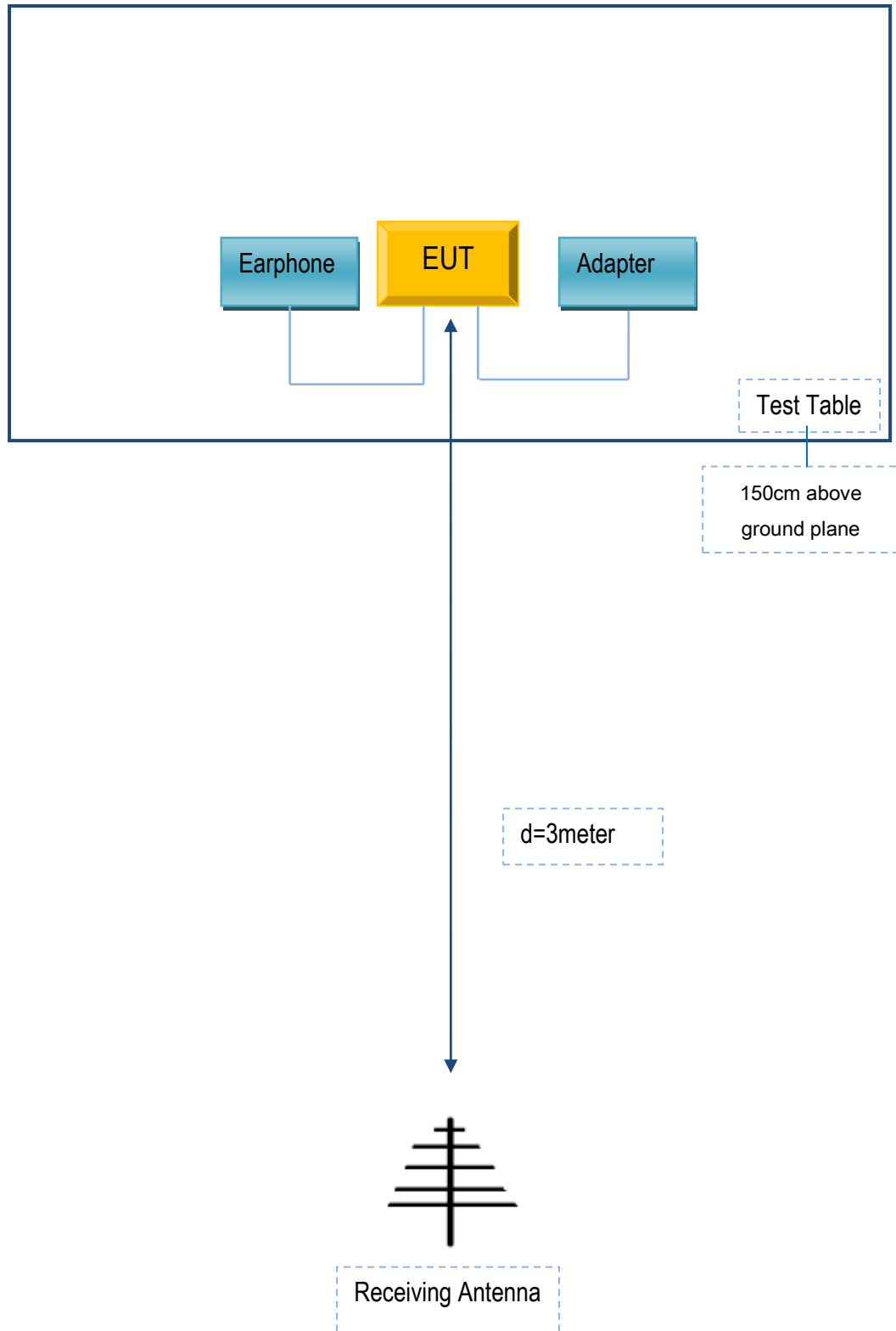


**Block Configuration Diagram for Radiated Emissions ( Below 1GHz ) .**





**Block Configuration Diagram for Radiated Emissions ( Above 1GHz ) .**



## Annex C. ii. SUPPORTING EQUIPMENT DESCRIPTION

The following is a description of supporting equipment and details of cables used with the EUT.

### Supporting Equipment:

Manufacturer	Equipment Description	Model	Serial No
BLU Products, Inc.	Adapter	TPA-46B050070UU	N/A
BLU Products, Inc.	Earphone	DASH L5 LTE	N/A

### Supporting Cable:

Cable type	Shield Type	Ferrite Core	Length	Serial No
USB Cable	Un-shielding	No	0.8m	N/A



Test Report No.	17070978-FCC-R2
Page	64 of 65

## Annex D. User Manual / Block Diagram / Schematics / Partlist

Please see the attachment

## Annex E. DECLARATION OF SIMILARITY

### **BLU Products, Inc.**

To: SIEMIC,775MontagueExpressway,Milpitas,CA95035,USA

### **Declaration Letter**

Dear Sir,


For our business issue and marketing requirement, we would like to list 2 model numbers on the FCC certificates and reports, as following:

Model No.:DASH L5 LTE,DASH L5X

We declare that, all the model PCB, Antenna and Appearance shape, accessories are the same. The difference of these is listed as below:

Main Model No.	Serial Model No.	Difference
DASH L5 LTE	DASH L5X	Different model name

Thank you!

Signature: 

Printed name/title: Zeng wei

Address: Adress :10814 NW 33rd St # 100 Doral, FL 33172