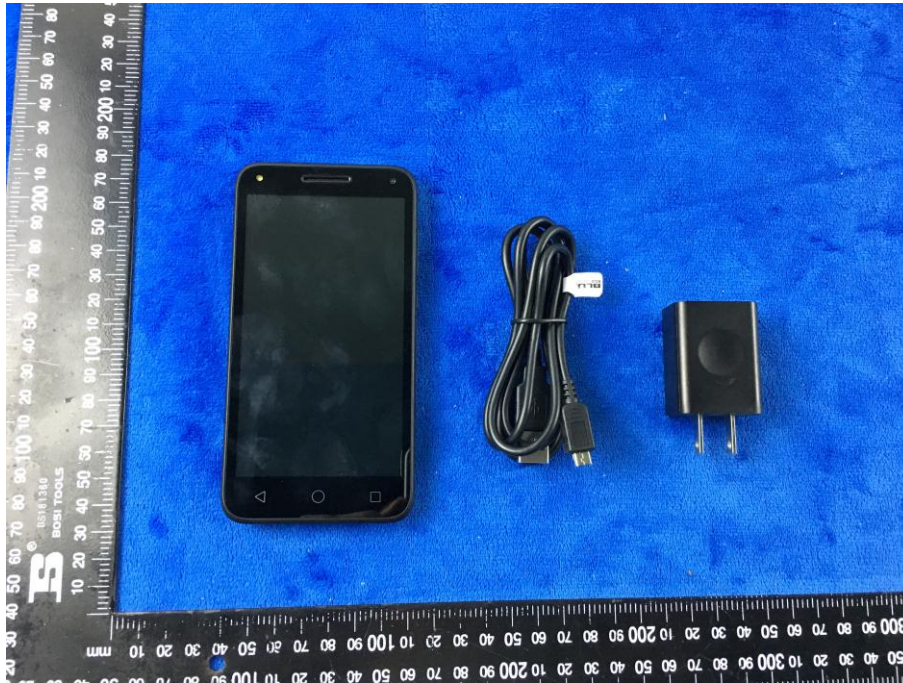


## Annex B. EUT And Test Setup Photographs

### Annex B.i. Photograph: EUT External Photo

Whole Package View



Adapter - Label View



EUT - Front View



EUT - Rear View



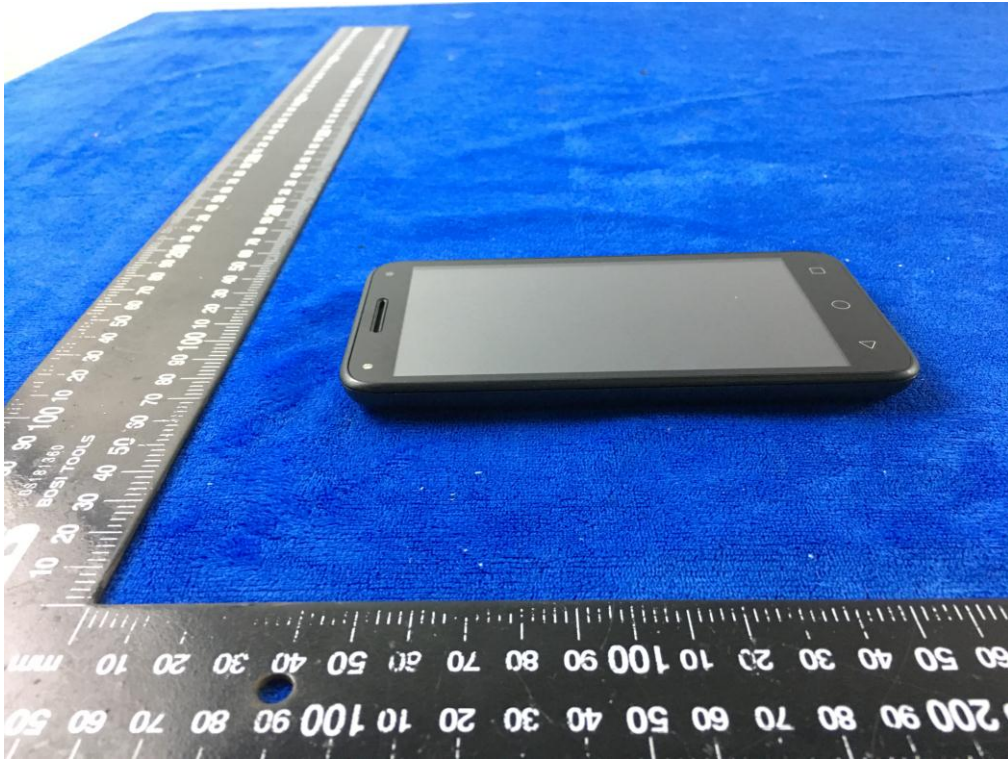
EUT - Top View



EUT - Bottom View



EUT - Left View



EUT - Right View



**Annex B.ii. Photograph: EUT Internal Photo**

Cover Off - Top View 1



Cover Off - Top View 2



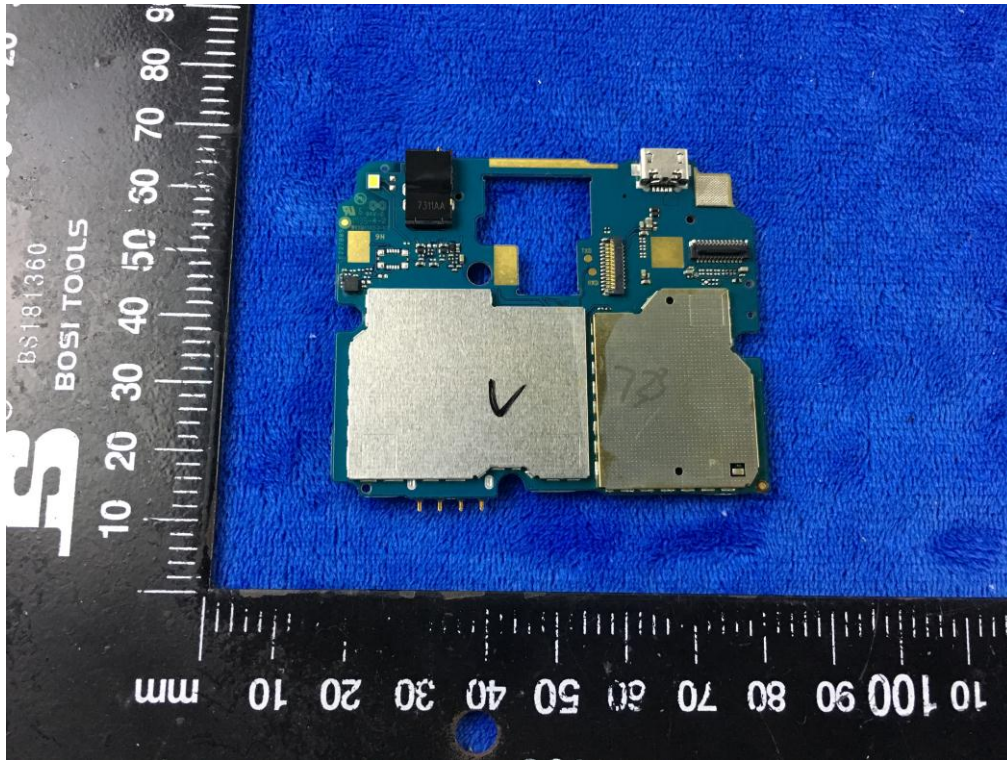
Battery - Front View



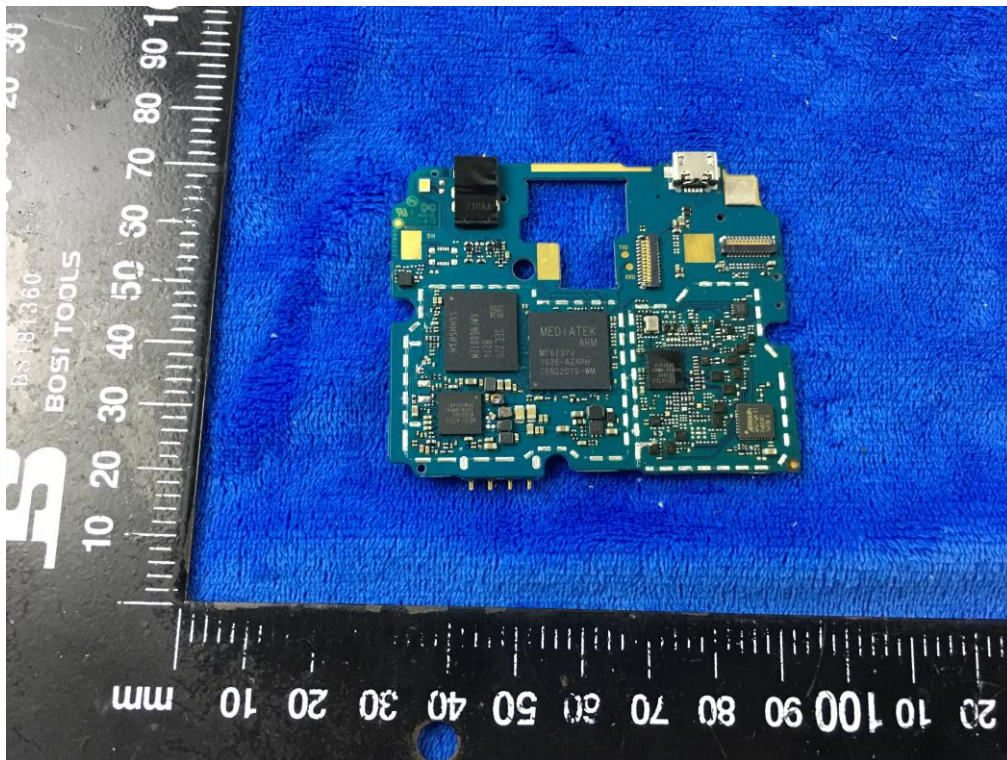
Battery - Rear View



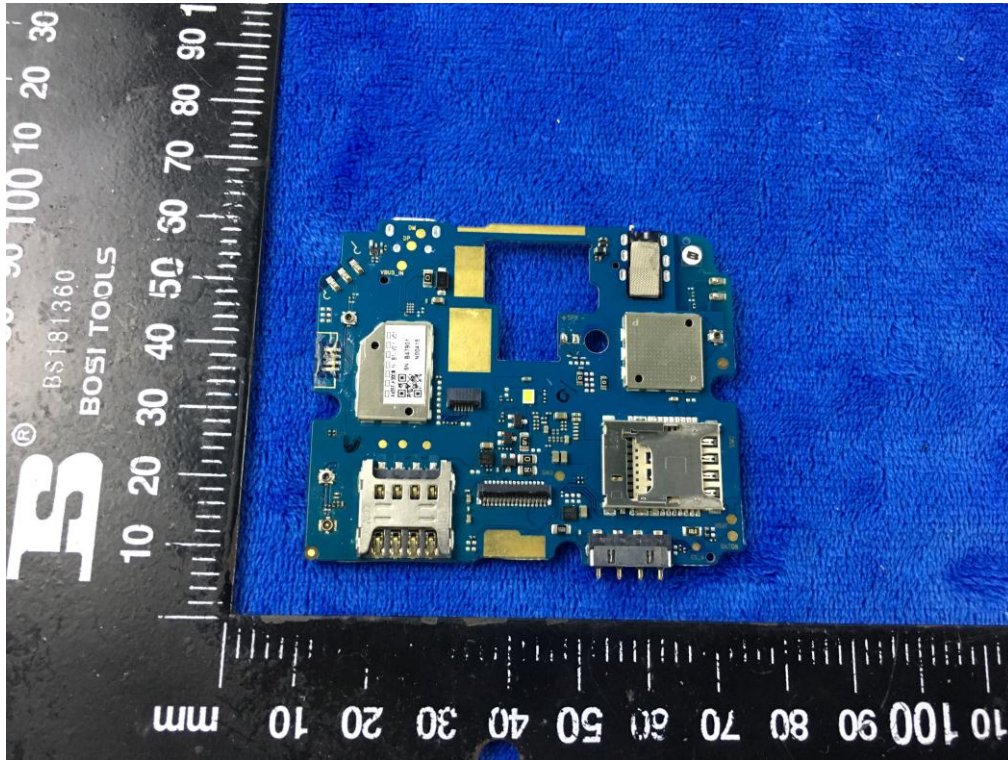
Mainboard with Shielding - Front View



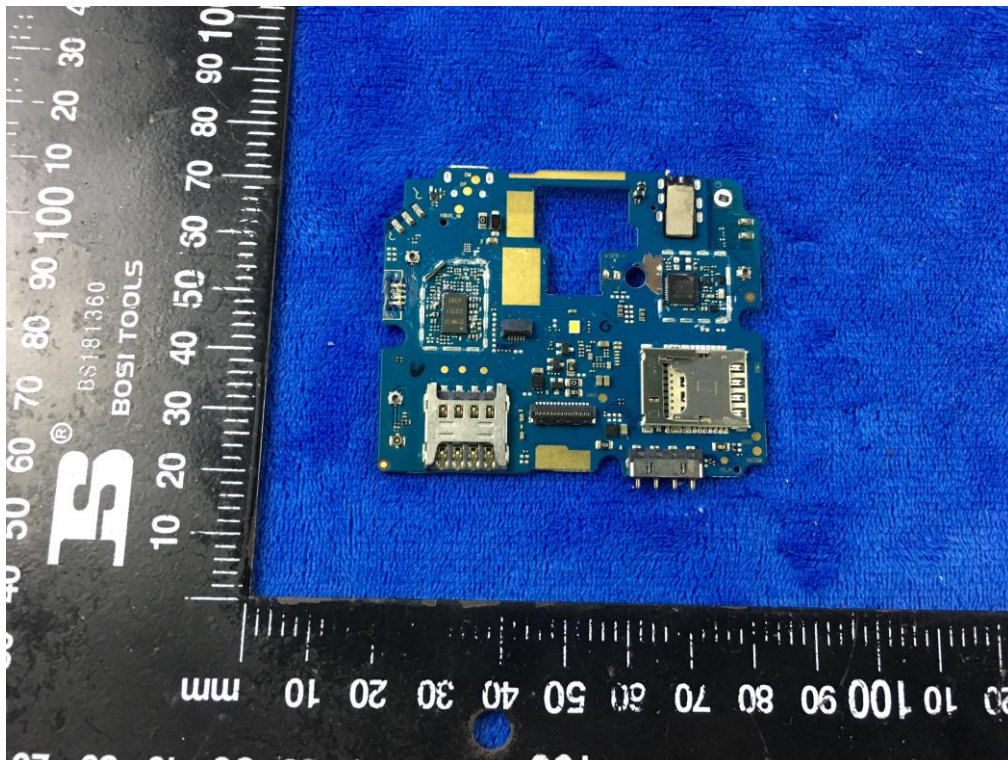
Mainboard without Shielding - Front View



Mainboard with Shielding – Rear View

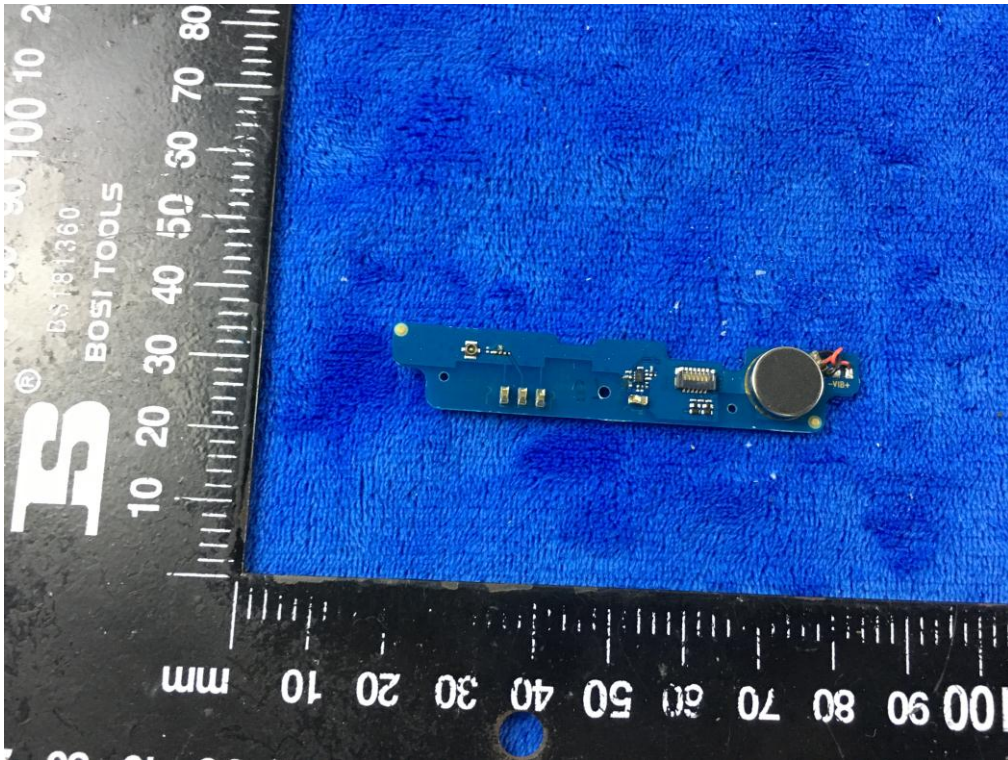


Mainboard without Shielding – Rear View

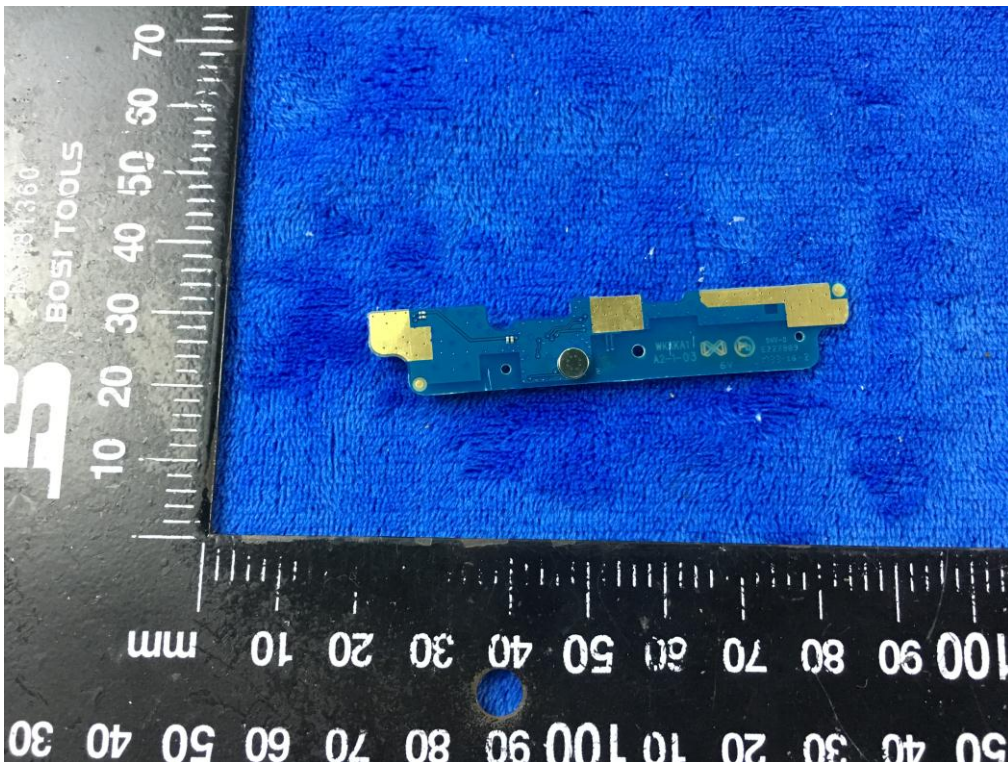




Smallboard – Front View



Smallboard – Rear View



LCD – Front View



LCD – Rear View



GSM/PCS/UMTS-FDD/ LTE Antenna View



WIFI/BT/BLE/GPS - Antenna View



RXD- Antenna View



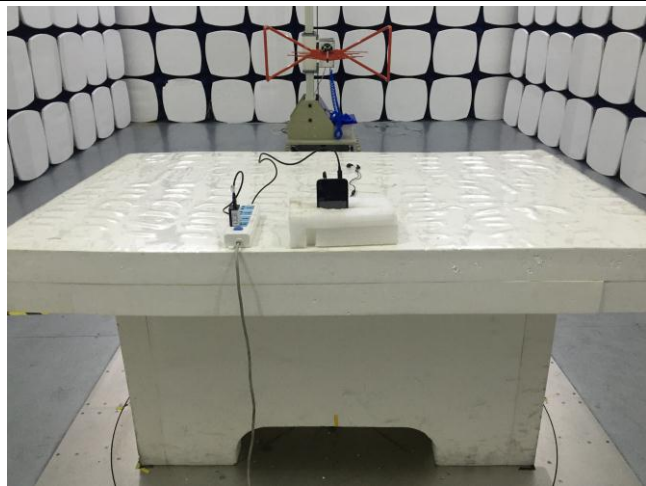
**Annex B.iii. Photograph: Test Setup Photo**



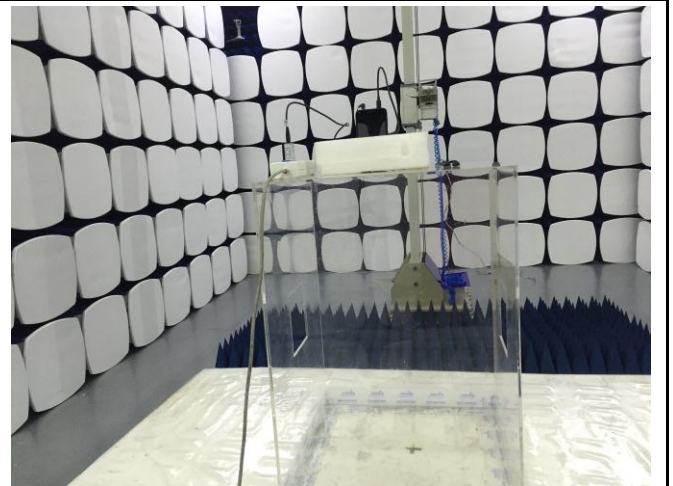
Conducted Emissions Test Setup Front View



Conducted Emissions Test Setup Side View



Radiated Spurious Emissions Test Setup Below 1GHz

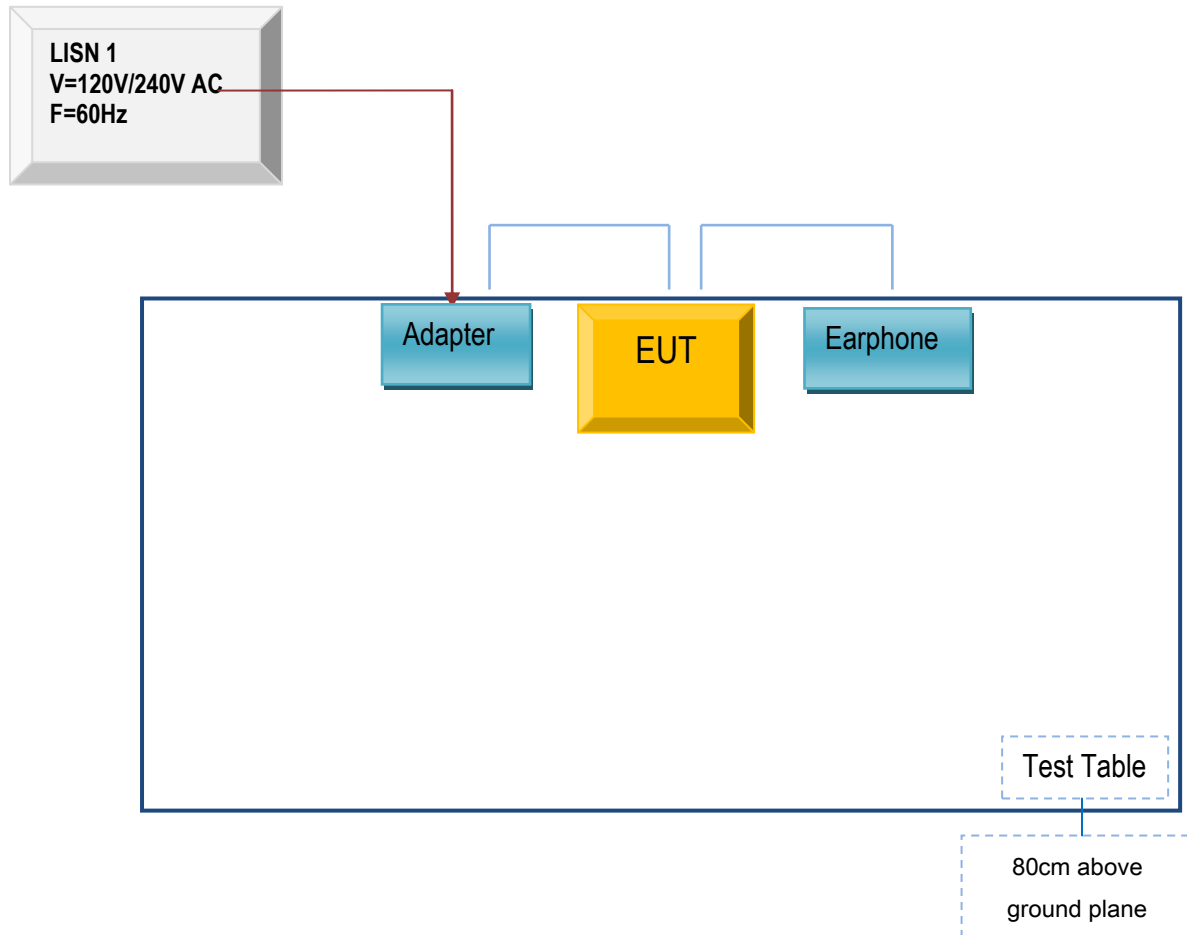


Radiated Spurious Emissions Test Setup Above  
1GHz

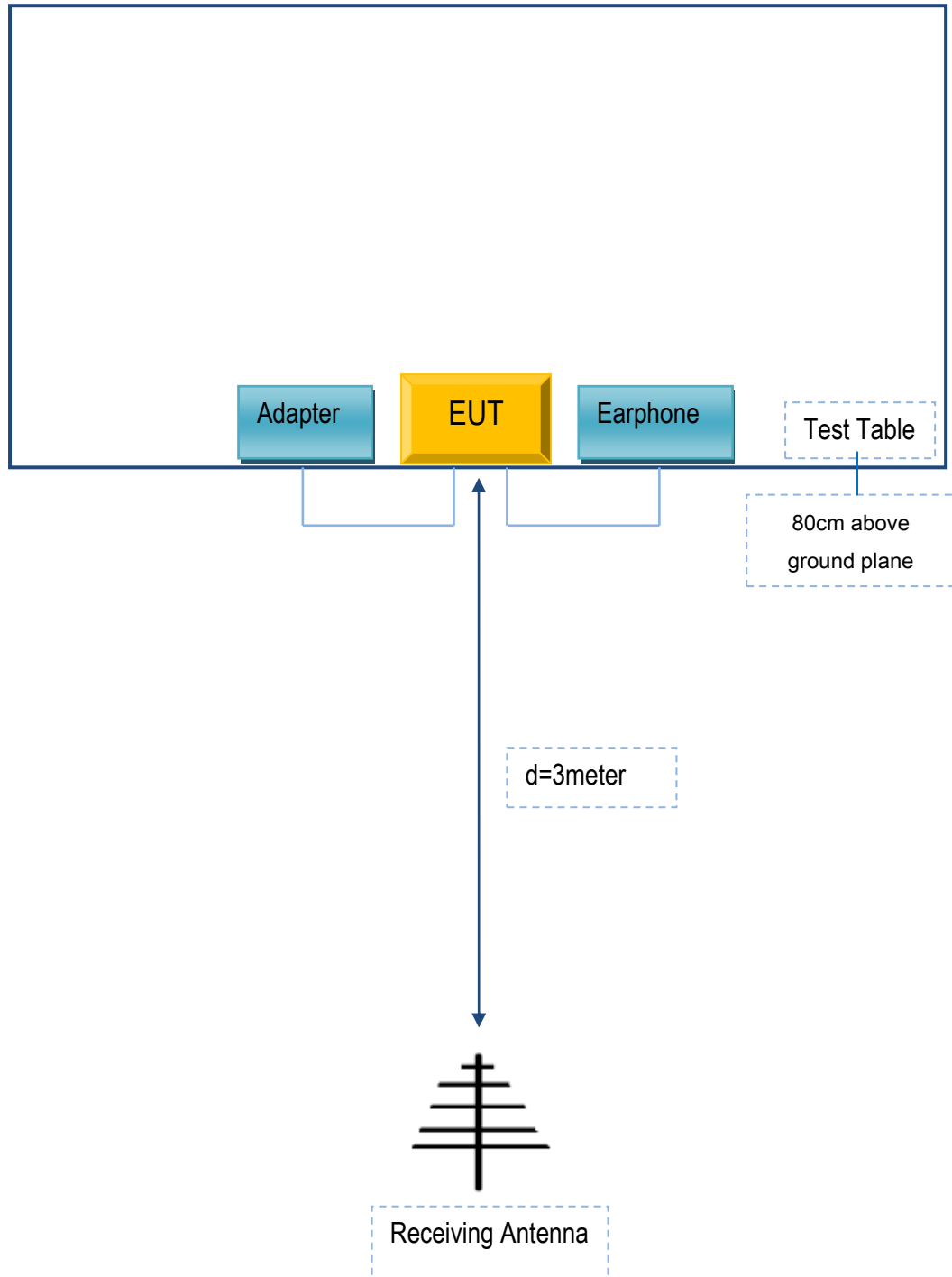
## Annex C. TEST SETUP AND SUPPORTING EQUIPMENT

### Annex C.ii. TEST SET UP BLOCK

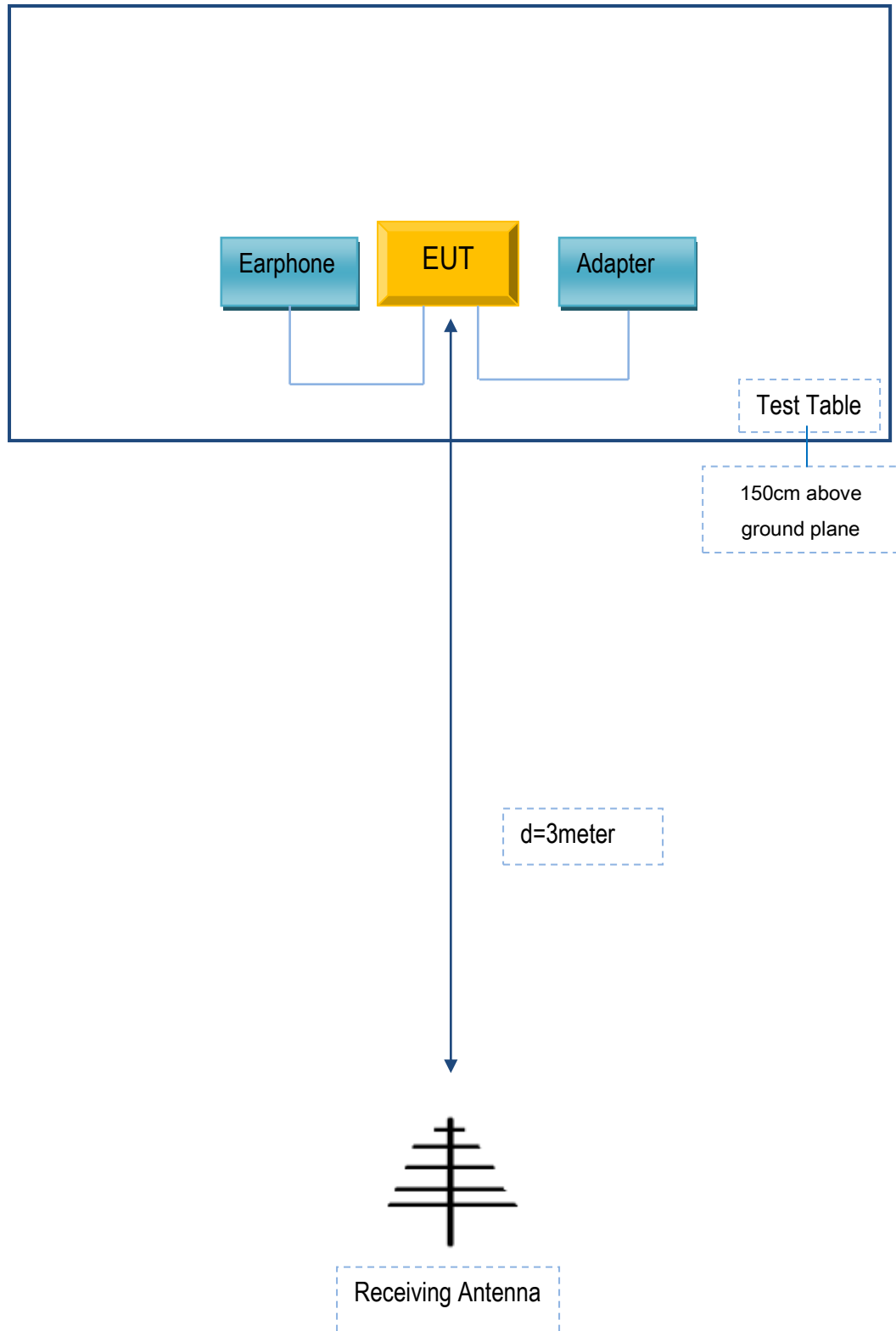
#### Block Configuration Diagram for AC Line Conducted Emissions



Block Configuration Diagram for Radiated Emissions ( Below 1GHz ) .



**Block Configuration Diagram for Radiated Emissions ( Above 1GHz ) .**





## Annex C. ii. SUPPORTING EQUIPMENT DESCRIPTION

The following is a description of supporting equipment and details of cables used with the EUT.

### Supporting Equipment:

Manufacturer	Equipment Description	Model	Serial No
BLU Products, Inc.	Adapter	TPA-46B050070UU	N/A
BLU Products, Inc.	Earphone	DASH L5 LTE	N/A

### Supporting Cable:

Cable type	Shield Type	Ferrite Core	Length	Serial No
USB Cable	Un-shielding	No	0.8m	N/A

Test Report	17070978-FCC-R3
Page	68 of 69

## Annex D. User Manual / Block Diagram / Schematics / Partlist

Please see the attachment

**Annex E. DECLARATION OF SIMILARITY**

**BLU Products, Inc.**

To: SIEMIC, 775 Montague Expressway, Milpitas, CA 95035, USA

**Declaration Letter**

Dear Sir,


For our business issue and marketing requirement, we would like to list 2 model numbers on the FCC certificates and reports, as following:

Model No.: DASH L5 LTE, DASH L5X

We declare that, all the model PCB, Antenna and Appearance shape, accessories are the same. The difference of these is listed as below:

Main Model No.	Serial Model No.	Difference
DASH L5 LTE	DASH L5X	Different model name

Thank you!

Signature: 

Printed name/title: Zeng wei

Address: Address : 10814 NW 33rd St # 100 Doral, FL 33172