

Test Plot 1#: GSM 850_Head Left Cheek_Middle**DUT: Mobile Phone; Type: Click C150; Serial: 19103001306;**

Communication System: Generic GSM; Frequency: 836.6 MHz; Duty Cycle: 1:8
Medium parameters used: $f = 836.6$ MHz; $\sigma = 0.873$ S/m; $\epsilon_r = 42.2$; $\rho = 1000$ kg/m³ ;
Phantom section: Left Section

DASY5 Configuration:

- Probe: EX3DV4 - SN7522; ConvF(9.46, 9.46, 9.46) @836.6 MHz
- Sensor-Surface: 1.4mm (Mechanical Surface Detection)
- Electronics: DAE4 SN1562; Calibrated: 11/6/2018
- Phantom: SAM-Twin V8.0 P1aP2a; Type: QD 000 P41 AA; Serial: 1962
- Measurement SW: DASY52, Version 52.10 (2) ;

Area Scan (71x91x1): Interpolated grid: dx=1.500 mm, dy=1.500 mm

Maximum value of SAR (interpolated) = 0.401 W/kg

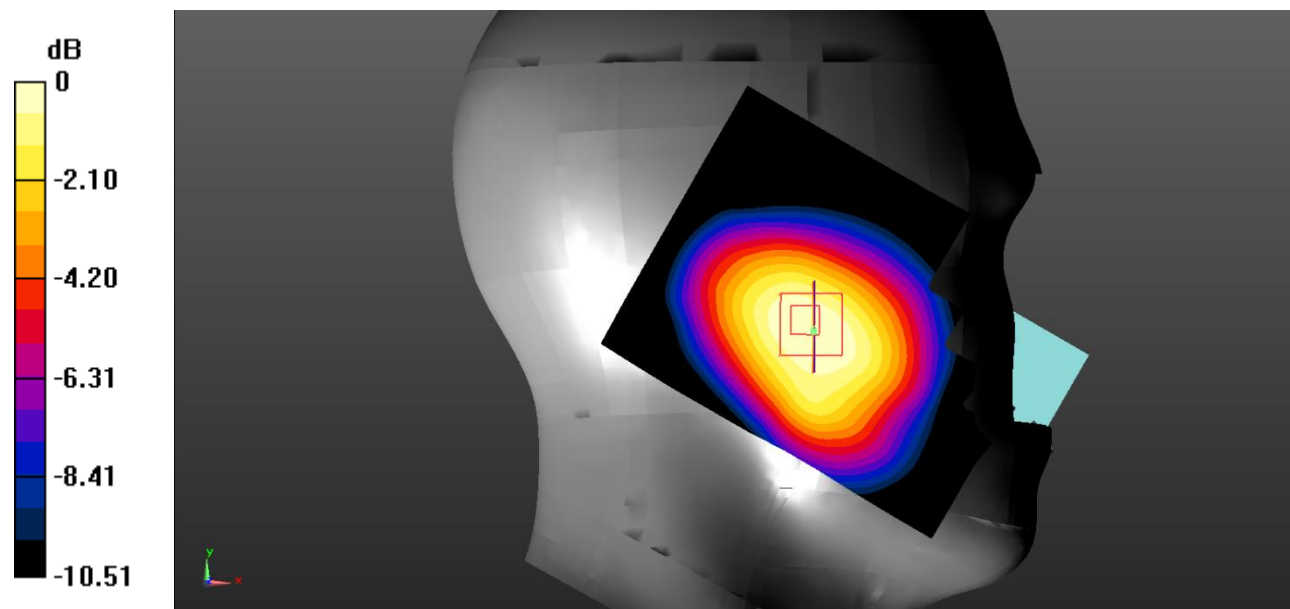
Zoom Scan (5x5x7)/Cube 0: Measurement grid: dx=8mm, dy=8mm, dz=5mm

Reference Value = 9.467 V/m; Power Drift = -0.11 dB

Peak SAR (extrapolated) = 0.498 W/kg

SAR(1 g) = 0.366 W/kg; SAR(10 g) = 0.253 W/kg

Maximum value of SAR (measured) = 0.384 W/kg



0 dB = 0.384 W/kg = -4.16 dBW/kg

Test Plot 2#: GSM 850_Head Left Tilt_Middle**DUT: Mobile Phone; Type: Click C150; Serial: 19103001306;**

Communication System: Generic GSM; Frequency: 836.6 MHz; Duty Cycle: 1:8
Medium parameters used: $f = 836.6$ MHz; $\sigma = 0.873$ S/m; $\epsilon_r = 42.2$; $\rho = 1000$ kg/m³ ;
Phantom section: Left Section

DASY5 Configuration:

- Probe: EX3DV4 - SN7522; ConvF(9.46, 9.46, 9.46) @836.6 MHz
- Sensor-Surface: 1.4mm (Mechanical Surface Detection)
- Electronics: DAE4 SN1562; Calibrated: 11/6/2018
- Phantom: SAM-Twin V8.0 P1aP2a; Type: QD 000 P41 AA; Serial: 1962
- Measurement SW: DASY52, Version 52.10 (2) ;

Area Scan (71x91x1): Interpolated grid: dx=1.500 mm, dy=1.500 mm

Maximum value of SAR (interpolated) = 0.203 W/kg

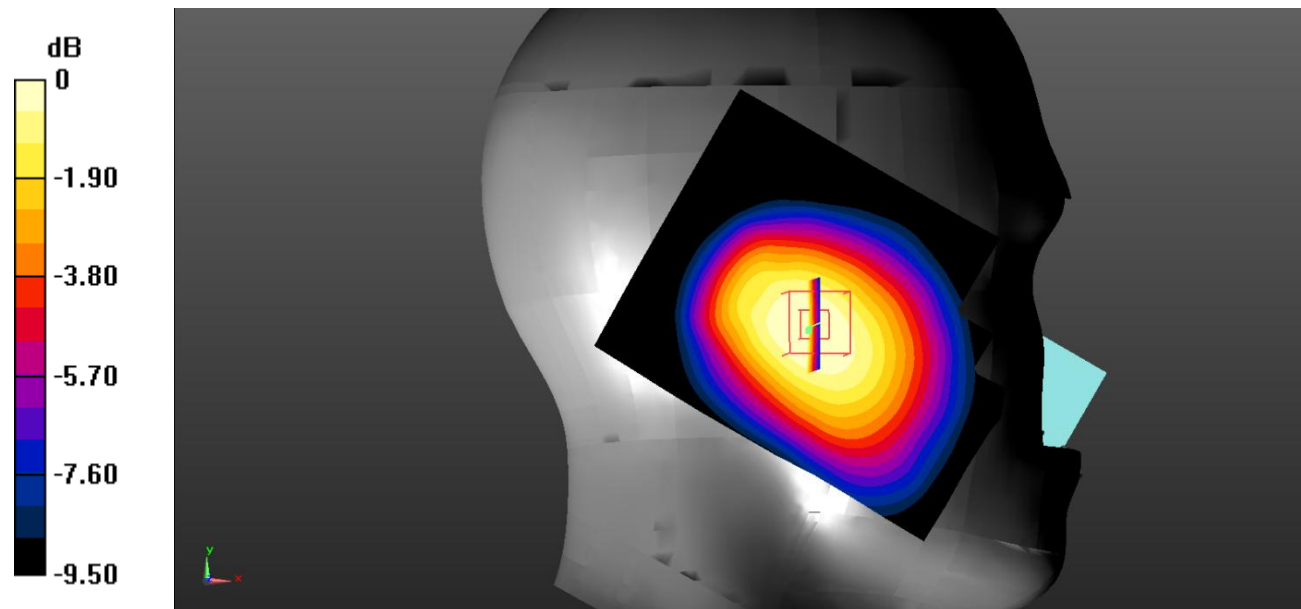
Zoom Scan (5x5x7)/Cube 0: Measurement grid: dx=8mm, dy=8mm, dz=5mm

Reference Value = 10.35 V/m; Power Drift = -0.16 dB

Peak SAR (extrapolated) = 0.252 W/kg

SAR(1 g) = 0.185 W/kg; SAR(10 g) = 0.130 W/kg

Maximum value of SAR (measured) = 0.194 W/kg



0 dB = 0.194 W/kg = -7.12 dBW/kg

Test Plot 3#: GSM 850_Head Right Cheek_Middle**DUT: Mobile Phone; Type: Click C150; Serial: 19103001306;**

Communication System: Generic GSM; Frequency: 836.6 MHz; Duty Cycle: 1:8
Medium parameters used: $f = 836.6$ MHz; $\sigma = 0.873$ S/m; $\epsilon_r = 42.2$; $\rho = 1000$ kg/m³ ;
Phantom section: Right Section

DASY5 Configuration:

- Probe: EX3DV4 - SN7522; ConvF(9.46, 9.46, 9.46) @836.6 MHz
- Sensor-Surface: 1.4mm (Mechanical Surface Detection)
- Electronics: DAE4 SN1562; Calibrated: 11/6/2018
- Phantom: SAM-Twin V8.0 P1aP2a; Type: QD 000 P41 AA; Serial: 1962
- Measurement SW: DASY52, Version 52.10 (2) ;

Area Scan (71x91x1): Interpolated grid: dx=1.500 mm, dy=1.500 mm

Maximum value of SAR (interpolated) = 0.410 W/kg

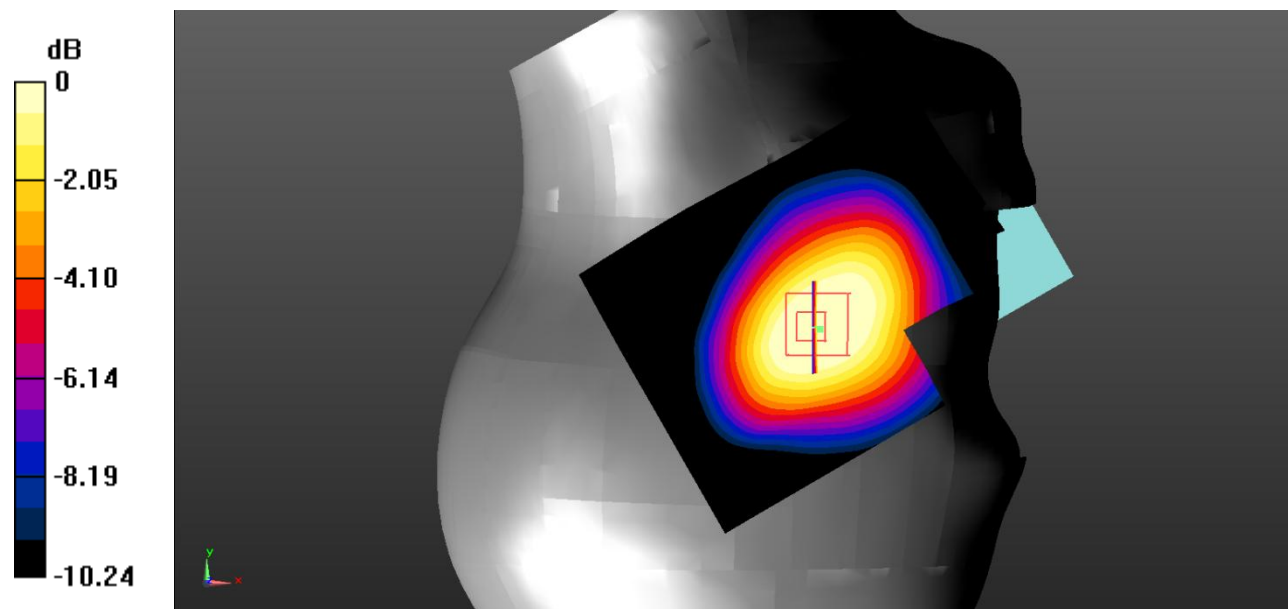
Zoom Scan (5x5x7)/Cube 0: Measurement grid: dx=8mm, dy=8mm, dz=5mm

Reference Value = 6.490 V/m; Power Drift = -0.03 dB

Peak SAR (extrapolated) = 0.421 W/kg

SAR(1 g) = 0.302 W/kg; SAR(10 g) = 0.206 W/kg

Maximum value of SAR (measured) = 0.320 W/kg



0 dB = 0.320 W/kg = -4.95 dBW/kg

Test Plot 4#: GSM 850_Head Right Tilt_Middle

DUT: Mobile Phone; Type: Click C150; Serial: 19103001306;

Communication System: Generic GSM; Frequency: 836.6 MHz; Duty Cycle: 1:8
 Medium parameters used: $f = 836.6 \text{ MHz}$; $\sigma = 0.873 \text{ S/m}$; $\epsilon_r = 42.2$; $\rho = 1000 \text{ kg/m}^3$;
 Phantom section: Right Section

DASY5 Configuration:

- Probe: EX3DV4 - SN7522; ConvF(9.46, 9.46, 9.46) @836.6 MHz
- Sensor-Surface: 1.4mm (Mechanical Surface Detection)
- Electronics: DAE4 SN1562; Calibrated: 11/6/2018
- Phantom: SAM-Twin V8.0 P1aP2a; Type: QD 000 P41 AA; Serial: 1962
- Measurement SW: DASY52, Version 52.10 (2) ;

Area Scan (71x91x1): Interpolated grid: $dx=1.500 \text{ mm}$, $dy=1.500 \text{ mm}$

Maximum value of SAR (interpolated) = 0.141 W/kg

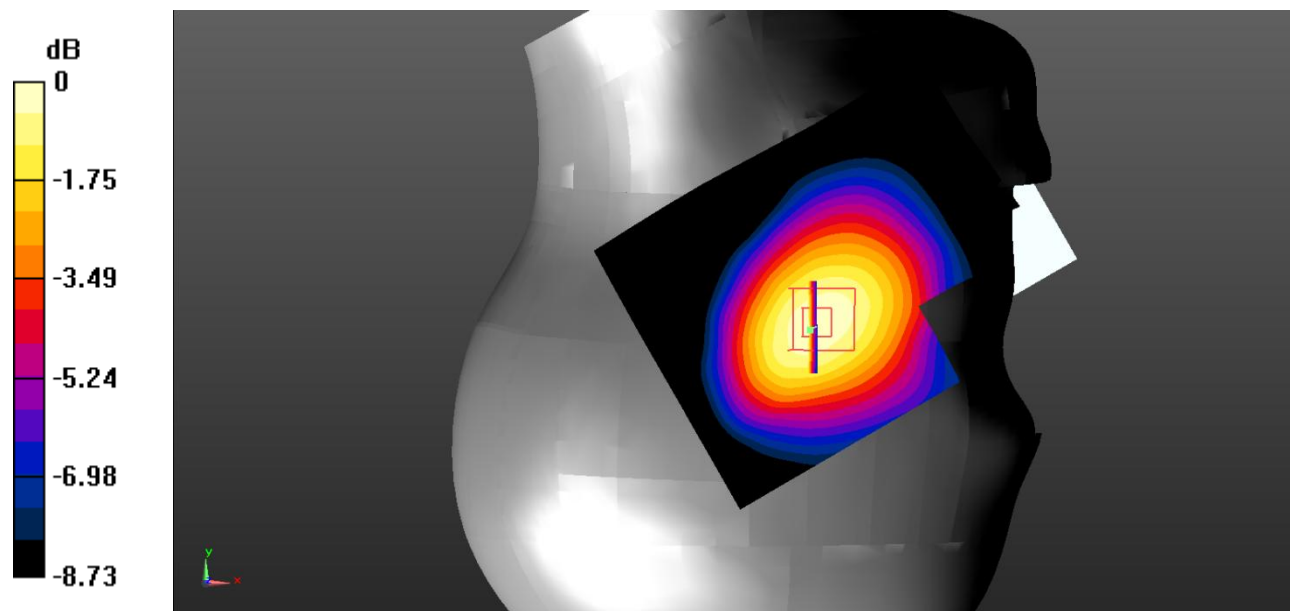
Zoom Scan (5x5x7)/Cube 0: Measurement grid: $dx=8\text{mm}$, $dy=8\text{mm}$, $dz=5\text{mm}$

Reference Value = 5.452 V/m; Power Drift = 0.10 dB

Peak SAR (extrapolated) = 0.180 W/kg

SAR(1 g) = 0.137 W/kg; SAR(10 g) = 0.098 W/kg

Maximum value of SAR (measured) = 0.143 W/kg



0 dB = 0.143 W/kg = -8.45 dBW/kg

Test Plot 5#: GSM 850_Body Worn Back_Middle

DUT: Mobile Phone; Type: Click C150; Serial: 19103001306;

Communication System: Generic GSM; Frequency: 836.6 MHz; Duty Cycle: 1:8
 Medium parameters used: $f = 836.6 \text{ MHz}$; $\sigma = 0.873 \text{ S/m}$; $\epsilon_r = 42.2$; $\rho = 1000 \text{ kg/m}^3$;
 Phantom section: Flat Section

DASY5 Configuration:

- Probe: EX3DV4 - SN7522; ConvF(9.46, 9.46, 9.46) @836.6 MHz
- Sensor-Surface: 1.4mm (Mechanical Surface Detection)
- Electronics: DAE4 SN1562; Calibrated: 11/6/2018
- Phantom: SAM-Twin V8.0 P1aP2a; Type: QD 000 P41 AA; Serial: 1962
- Measurement SW: DASY52, Version 52.10 (2) ;

Area Scan (71x91x1): Interpolated grid: $dx=1.500 \text{ mm}$, $dy=1.500 \text{ mm}$

Maximum value of SAR (interpolated) = 0.709 W/kg

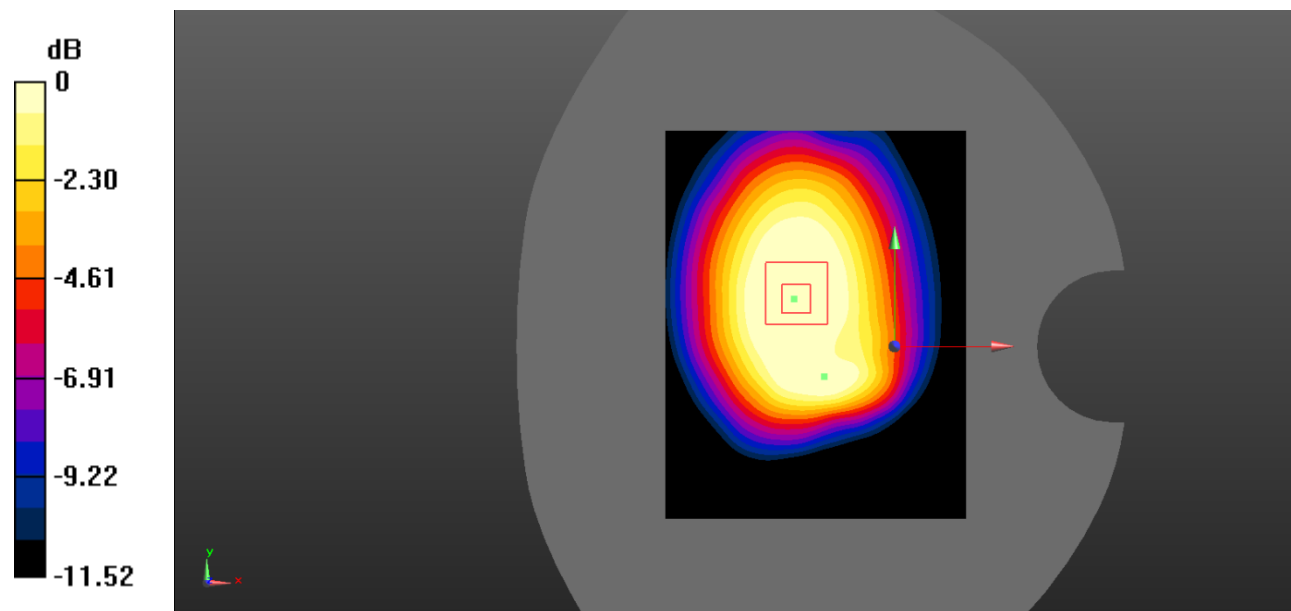
Zoom Scan (5x5x7)/Cube 0: Measurement grid: $dx=8\text{mm}$, $dy=8\text{mm}$, $dz=5\text{mm}$

Reference Value = 22.90 V/m; Power Drift = -0.06 dB

Peak SAR (extrapolated) = 0.705 W/kg

SAR(1 g) = 0.504 W/kg; SAR(10 g) = 0.342 W/kg

Maximum value of SAR (measured) = 0.531 W/kg



0 dB = 0.531 W/kg = -2.75 dBW/kg

Test Plot 6#: GSM 850_Body Back_Low

DUT: Mobile Phone; Type: Click C150; Serial: 19103001306;

Communication System: Generic GPRS-2 slots; Frequency: 824.2 MHz; Duty Cycle: 1:4
 Medium parameters used: $f = 824.2$ MHz; $\sigma = 0.871$ S/m; $\epsilon_r = 42.837$; $\rho = 1000$ kg/m³ ;
 Phantom section: Flat Section

DASY5 Configuration:

- Probe: EX3DV4 - SN7522; ConvF(9.46, 9.46, 9.46) @824.2 MHz
- Sensor-Surface: 1.4mm (Mechanical Surface Detection)
- Electronics: DAE4 SN1562; Calibrated: 11/6/2018
- Phantom: SAM-Twin V8.0 P1aP2a; Type: QD 000 P41 AA; Serial: 1962
- Measurement SW: DASY52, Version 52.10 (2) ;

Area Scan (71x91x1): Interpolated grid: dx=1.500 mm, dy=1.500 mm

Maximum value of SAR (interpolated) = 0.808 W/kg

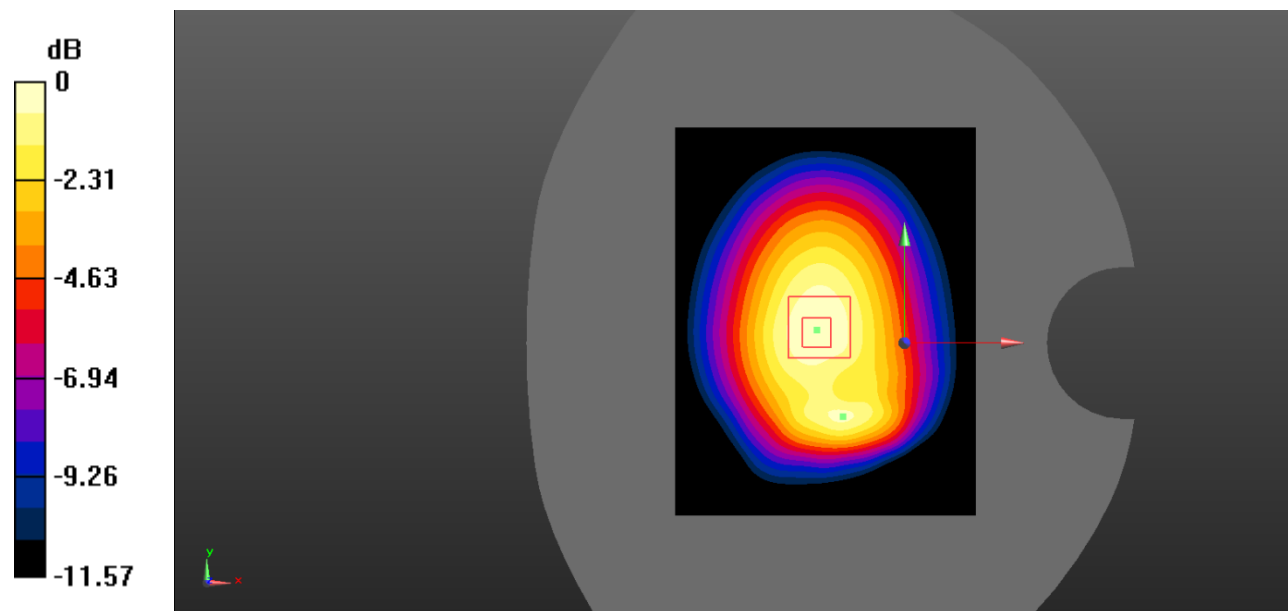
Zoom Scan (5x5x7)/Cube 0: Measurement grid: dx=8mm, dy=8mm, dz=5mm

Reference Value = 28.96 V/m; Power Drift = 0.12 dB

Peak SAR (extrapolated) = 1.08 W/kg

SAR(1 g) = 0.769 W/kg; SAR(10 g) = 0.520 W/kg

Maximum value of SAR (measured) = 0.815 W/kg



0 dB = 0.815 W/kg = -0.89 dBW/kg

Test Plot 7#: GSM 850_Body Back_Middle**DUT: Mobile Phone; Type: Click C150; Serial: 19103001306;**

Communication System: Generic GPRS-2 slots; Frequency: 836.6 MHz; Duty Cycle: 1:4
Medium parameters used: $f = 836.6$ MHz; $\sigma = 0.873$ S/m; $\epsilon_r = 42.2$; $\rho = 1000$ kg/m³ ;
Phantom section: Flat Section

DASY5 Configuration:

- Probe: EX3DV4 - SN7522; ConvF(9.46, 9.46, 9.46) @836.6 MHz
- Sensor-Surface: 1.4mm (Mechanical Surface Detection)
- Electronics: DAE4 SN1562; Calibrated: 11/6/2018
- Phantom: SAM-Twin V8.0 P1aP2a; Type: QD 000 P41 AA; Serial: 1962
- Measurement SW: DASY52, Version 52.10 (2) ;

Area Scan (71x91x1): Interpolated grid: dx=1.500 mm, dy=1.500 mm

Maximum value of SAR (interpolated) = 0.821 W/kg

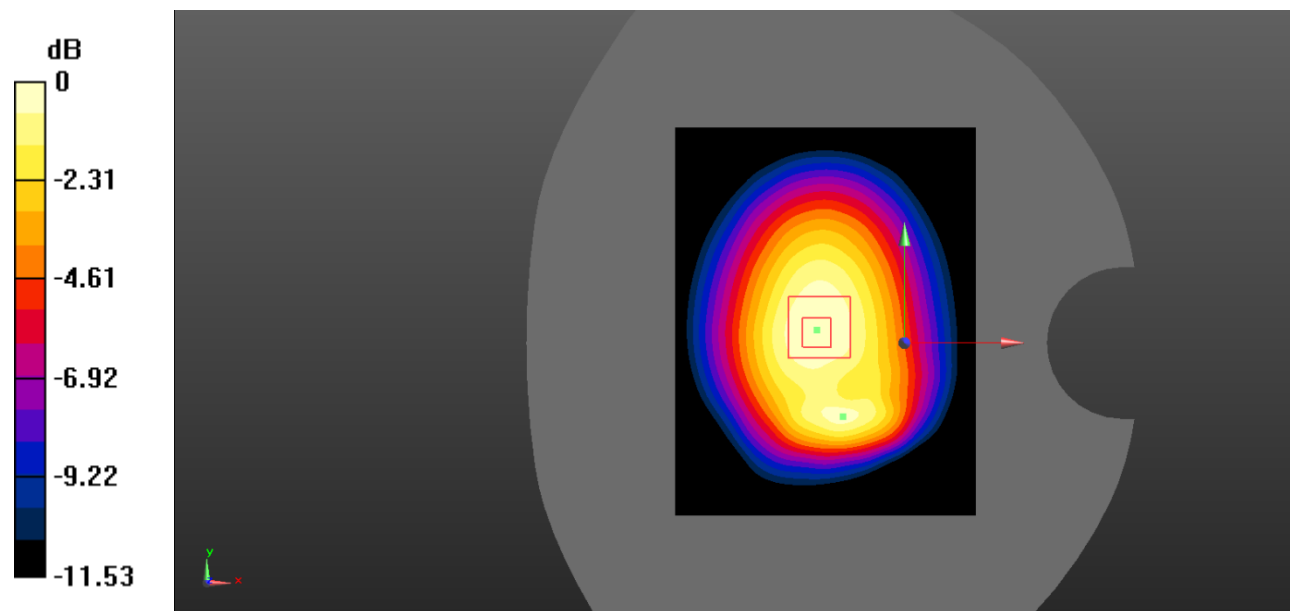
Zoom Scan (5x5x7)/Cube 0: Measurement grid: dx=8mm, dy=8mm, dz=5mm

Reference Value = 29.57 V/m; Power Drift = -0.16 dB

Peak SAR (extrapolated) = 1.06 W/kg

SAR(1 g) = 0.761 W/kg; SAR(10 g) = 0.514 W/kg

Maximum value of SAR (measured) = 0.803 W/kg



0 dB = 0.803 W/kg = -0.95 dBW/kg

Test Plot 8#: GSM 850_Body Back High

DUT: Mobile Phone; Type: Click C150; Serial: 19103001306;

Communication System: Generic GPRS-2 slots; Frequency: 848.8 MHz; Duty Cycle: 1:4
 Medium parameters used: $f = 848.8 \text{ MHz}$; $\sigma = 0.893 \text{ S/m}$; $\epsilon_r = 42.492$; $\rho = 1000 \text{ kg/m}^3$;
 Phantom section: Flat Section

DASY5 Configuration:

- Probe: EX3DV4 - SN7522; ConvF(9.46, 9.46, 9.46) @848.8 MHz
- Sensor-Surface: 1.4mm (Mechanical Surface Detection)
- Electronics: DAE4 SN1562; Calibrated: 11/6/2018
- Phantom: SAM-Twin V8.0 P1aP2a; Type: QD 000 P41 AA; Serial: 1962
- Measurement SW: DASY52, Version 52.10 (2) ;

Area Scan (71x91x1): Interpolated grid: dx=1.500 mm, dy=1.500 mm

Maximum value of SAR (interpolated) = 0.801 W/kg

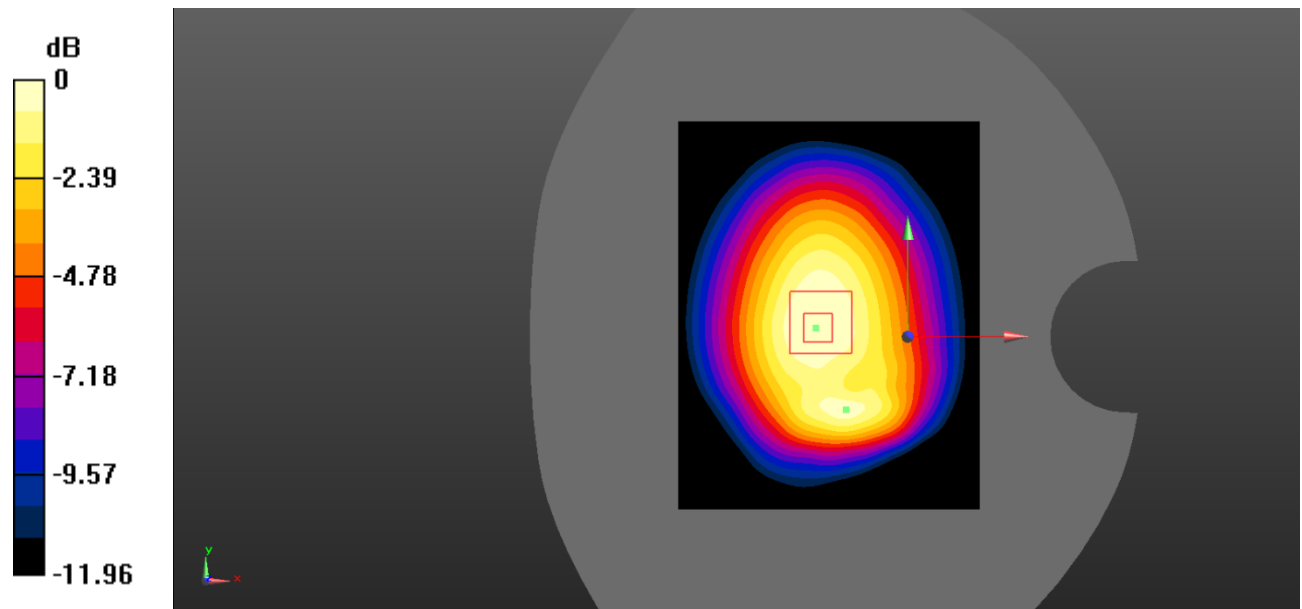
Zoom Scan (5x5x7)/Cube 0: Measurement grid: dx=8mm, dy=8mm, dz=5mm

Reference Value = 30.07 V/m; Power Drift = -0.11 dB

Peak SAR (extrapolated) = 1.02 W/kg

SAR(1 g) = 0.724 W/kg; SAR(10 g) = 0.496 W/kg

Maximum value of SAR (measured) = 0.762 W/kg



0 dB = 0.762 W/kg = -1.18 dBW/kg

Test Plot 9#: GSM 850_Body Bottom_Middle

DUT: Mobile Phone; Type: Click C150; Serial: 19103001306;

Communication System: Generic GPRS-2 slots; Frequency: 836.6 MHz; Duty Cycle: 1:4
 Medium parameters used: $f = 836.6 \text{ MHz}$; $\sigma = 0.873 \text{ S/m}$; $\epsilon_r = 42.2$; $\rho = 1000 \text{ kg/m}^3$;
 Phantom section: Flat Section

DASY5 Configuration:

- Probe: EX3DV4 - SN7522; ConvF(9.46, 9.46, 9.46) @836.6 MHz
- Sensor-Surface: 1.4mm (Mechanical Surface Detection)
- Electronics: DAE4 SN1562; Calibrated: 11/6/2018
- Phantom: SAM-Twin V8.0 P1aP2a; Type: QD 000 P41 AA; Serial: 1962
- Measurement SW: DASY52, Version 52.10 (2) ;

Area Scan (71x91x1): Interpolated grid: $dx=1.500 \text{ mm}$, $dy=1.500 \text{ mm}$

Maximum value of SAR (interpolated) = 0.0725 W/kg

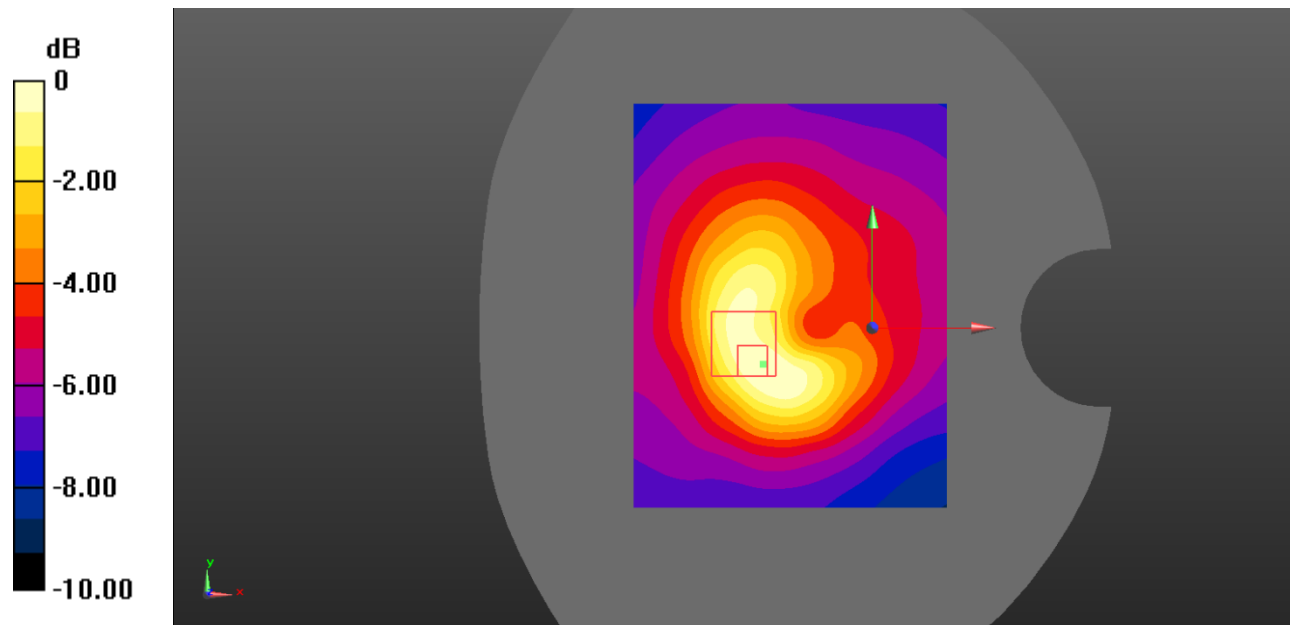
Zoom Scan (5x5x7)/Cube 0: Measurement grid: $dx=8\text{mm}$, $dy=8\text{mm}$, $dz=5\text{mm}$

Reference Value = 5.205 V/m; Power Drift = 0.18 dB

Peak SAR (extrapolated) = 0.113 W/kg

SAR(1 g) = 0.067 W/kg; SAR(10 g) = 0.040 W/kg

Maximum value of SAR (measured) = 0.0716 W/kg



0 dB = 0.0716 W/kg = -11.45 dBW/kg

Test Plot 10#: PCS 1900_Head Left Cheek_Middle**DUT: Mobile Phone; Type: Click C150; Serial: 19103001306;**

Communication System: Generic GSM; Frequency: 1880 MHz; Duty Cycle: 1:8
Medium parameters used: $f = 1880$ MHz; $\sigma = 1.378$ S/m; $\epsilon_r = 40.977$; $\rho = 1000$ kg/m³ ;
Phantom section: Left Section

DASY5 Configuration:

- Probe: EX3DV4 - SN7522; ConvF(7.91, 7.91, 7.91) @1880 MHz
- Sensor-Surface: 1.4mm (Mechanical Surface Detection)
- Electronics: DAE4 SN1562; Calibrated: 11/6/2018
- Phantom: SAM-Twin V8.0 P1aP2a; Type: QD 000 P41 AA; Serial: 1962
- Measurement SW: DASY52, Version 52.10 (2) ;

Area Scan (71x91x1): Interpolated grid: dx=1.500 mm, dy=1.500 mm

Maximum value of SAR (interpolated) = 0.816 W/kg

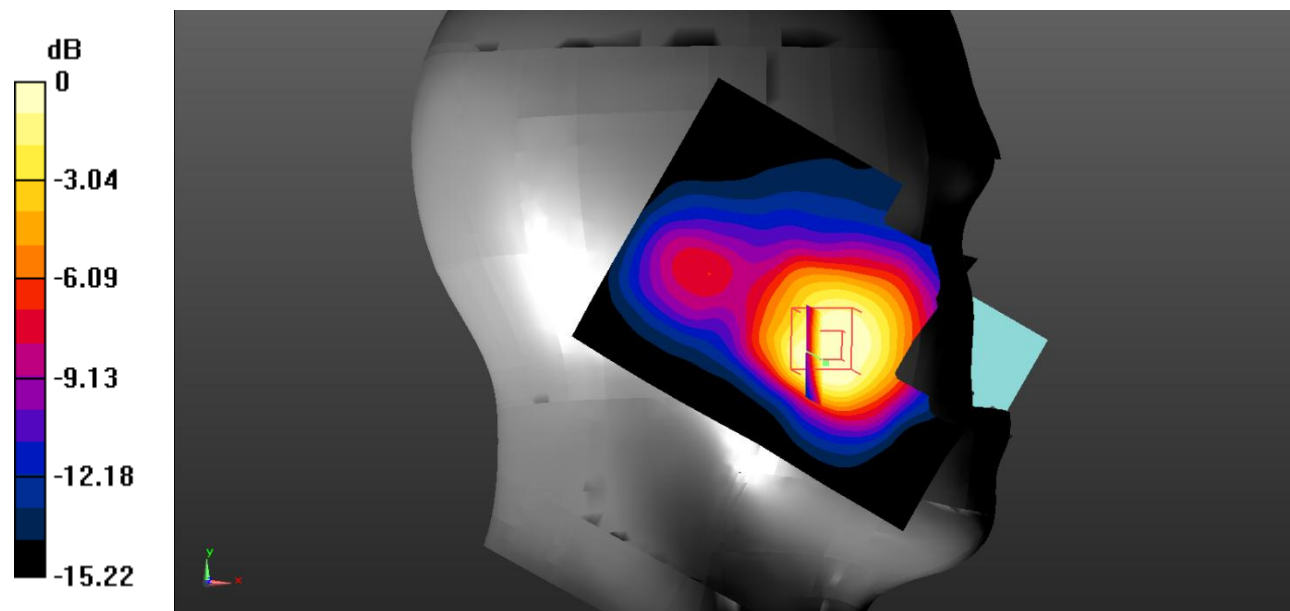
Zoom Scan (5x5x7)/Cube 0: Measurement grid: dx=8mm, dy=8mm, dz=5mm

Reference Value = 6.234 V/m; Power Drift = -0.00 dB

Peak SAR (extrapolated) = 0.867 W/kg

SAR(1 g) = 0.594 W/kg; SAR(10 g) = 0.376 W/kg

Maximum value of SAR (measured) = 0.617 W/kg



0 dB = 0.617 W/kg = -2.10 dBW/kg

Test Plot 11#: PCS 1900_Head Left Tilt_Middle

DUT: Mobile Phone; Type: Click C150; Serial: 19103001306;

Communication System: Generic GSM; Frequency: 1880 MHz; Duty Cycle: 1:8
 Medium parameters used: $f = 1880 \text{ MHz}$; $\sigma = 1.378 \text{ S/m}$; $\epsilon_r = 40.977$; $\rho = 1000 \text{ kg/m}^3$;
 Phantom section: Left Section

DASY5 Configuration:

- Probe: EX3DV4 - SN7522; ConvF(7.91, 7.91, 7.91) @1880 MHz
- Sensor-Surface: 1.4mm (Mechanical Surface Detection)
- Electronics: DAE4 SN1562; Calibrated: 11/6/2018
- Phantom: SAM-Twin V8.0 P1aP2a; Type: QD 000 P41 AA; Serial: 1962
- Measurement SW: DASY52, Version 52.10 (2) ;

Area Scan (71x91x1): Interpolated grid: $dx=1.500 \text{ mm}$, $dy=1.500 \text{ mm}$

Maximum value of SAR (interpolated) = 0.160 W/kg

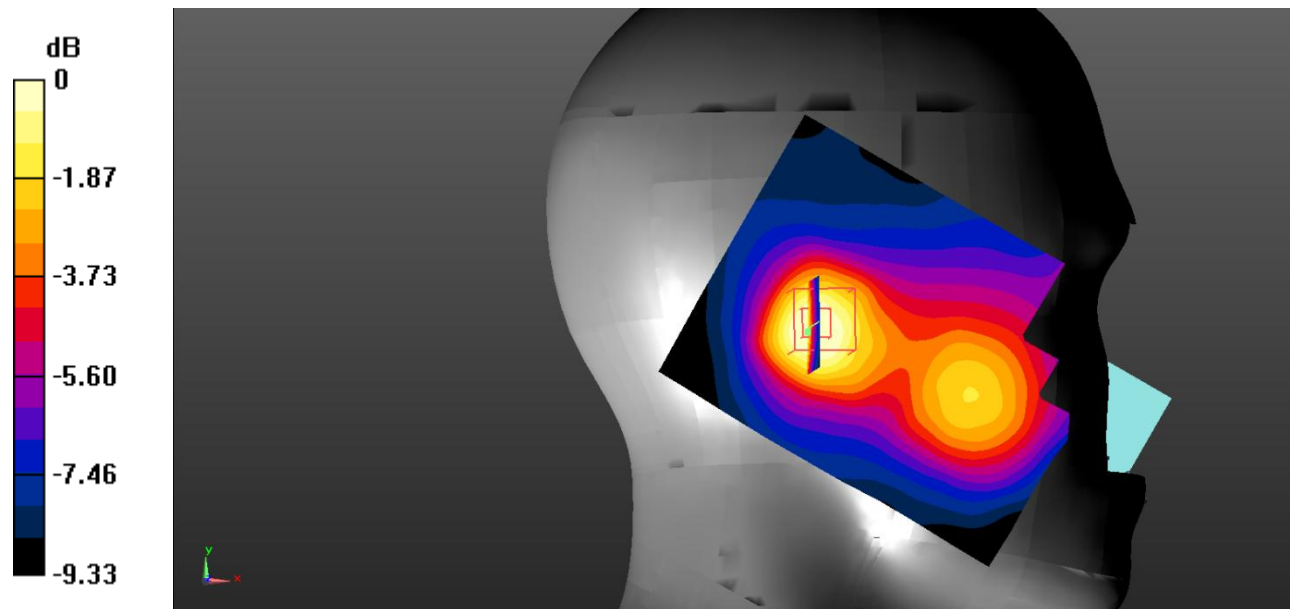
Zoom Scan (5x5x7)/Cube 0: Measurement grid: $dx=8\text{mm}$, $dy=8\text{mm}$, $dz=5\text{mm}$

Reference Value = 8.870 V/m; Power Drift = -0.03 dB

Peak SAR (extrapolated) = 0.208 W/kg

SAR(1 g) = 0.136 W/kg; SAR(10 g) = 0.086 W/kg

Maximum value of SAR (measured) = 0.143 W/kg



0 dB = 0.143 W/kg = -8.45 dBW/kg

Test Plot 12#: PCS 1900_Head Right Cheek_Middle**DUT: Mobile Phone; Type: Click C150; Serial: 19103001306;**

Communication System: Generic GSM; Frequency: 1880 MHz; Duty Cycle: 1:8
Medium parameters used: $f = 1880$ MHz; $\sigma = 1.378$ S/m; $\epsilon_r = 40.977$; $\rho = 1000$ kg/m³ ;
Phantom section: Right Section

DASY5 Configuration:

- Probe: EX3DV4 - SN7522; ConvF(7.91, 7.91, 7.91) @1880 MHz
- Sensor-Surface: 1.4mm (Mechanical Surface Detection)
- Electronics: DAE4 SN1562; Calibrated: 11/6/2018
- Phantom: SAM-Twin V8.0 P1aP2a; Type: QD 000 P41 AA; Serial: 1962
- Measurement SW: DASY52, Version 52.10 (2) ;

Area Scan (71x91x1): Interpolated grid: dx=1.500 mm, dy=1.500 mm

Maximum value of SAR (interpolated) = 0.393 W/kg

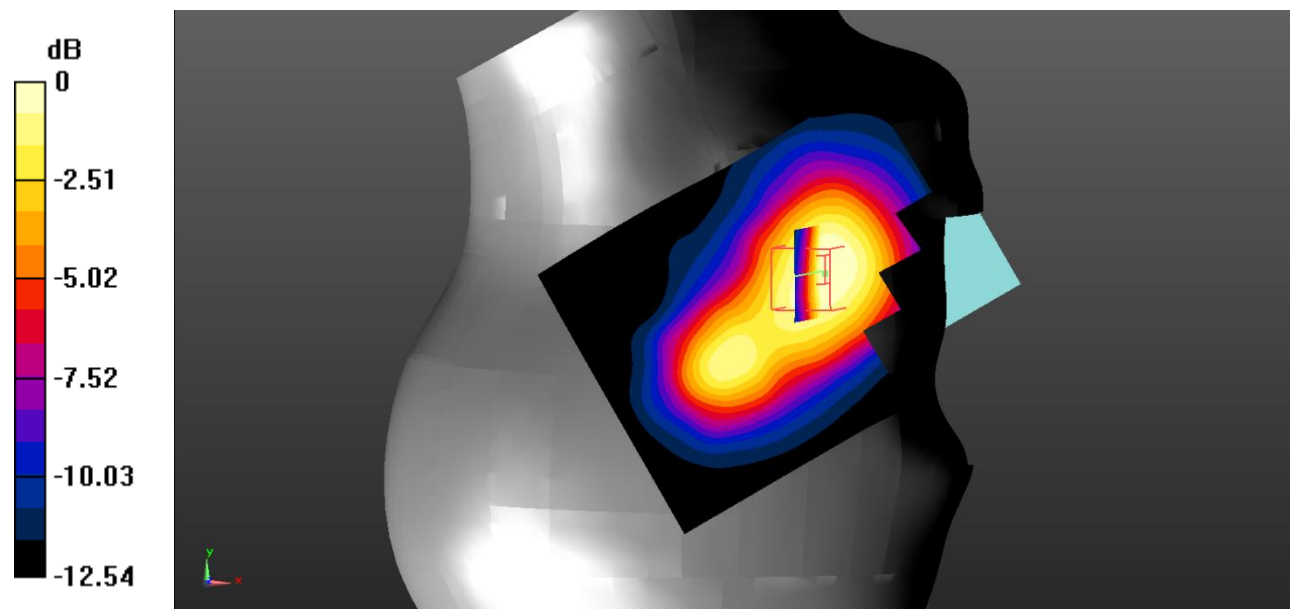
Zoom Scan (5x5x7)/Cube 0: Measurement grid: dx=8mm, dy=8mm, dz=5mm

Reference Value = 4.542 V/m; Power Drift = 0.12 dB

Peak SAR (extrapolated) = 0.514 W/kg

SAR(1 g) = 0.341 W/kg; SAR(10 g) = 0.218 W/kg

Maximum value of SAR (measured) = 0.365 W/kg



0 dB = 0.365 W/kg = -4.38 dBW/kg

Test Plot 13#: PCS 1900_Head Right Tilt_Middle

DUT: Mobile Phone; Type: Click C150; Serial: 19103001306;

Communication System: Generic GSM; Frequency: 1880 MHz; Duty Cycle: 1:8
 Medium parameters used: $f = 1880 \text{ MHz}$; $\sigma = 1.378 \text{ S/m}$; $\epsilon_r = 40.977$; $\rho = 1000 \text{ kg/m}^3$;
 Phantom section: Right Section

DASY5 Configuration:

- Probe: EX3DV4 - SN7522; ConvF(7.91, 7.91, 7.91) @1880 MHz
- Sensor-Surface: 1.4mm (Mechanical Surface Detection)
- Electronics: DAE4 SN1562; Calibrated: 11/6/2018
- Phantom: SAM-Twin V8.0 P1aP2a; Type: QD 000 P41 AA; Serial: 1962
- Measurement SW: DASY52, Version 52.10 (2) ;

Area Scan (71x91x1): Interpolated grid: $dx=1.500 \text{ mm}$, $dy=1.500 \text{ mm}$

Maximum value of SAR (interpolated) = 0.155 W/kg

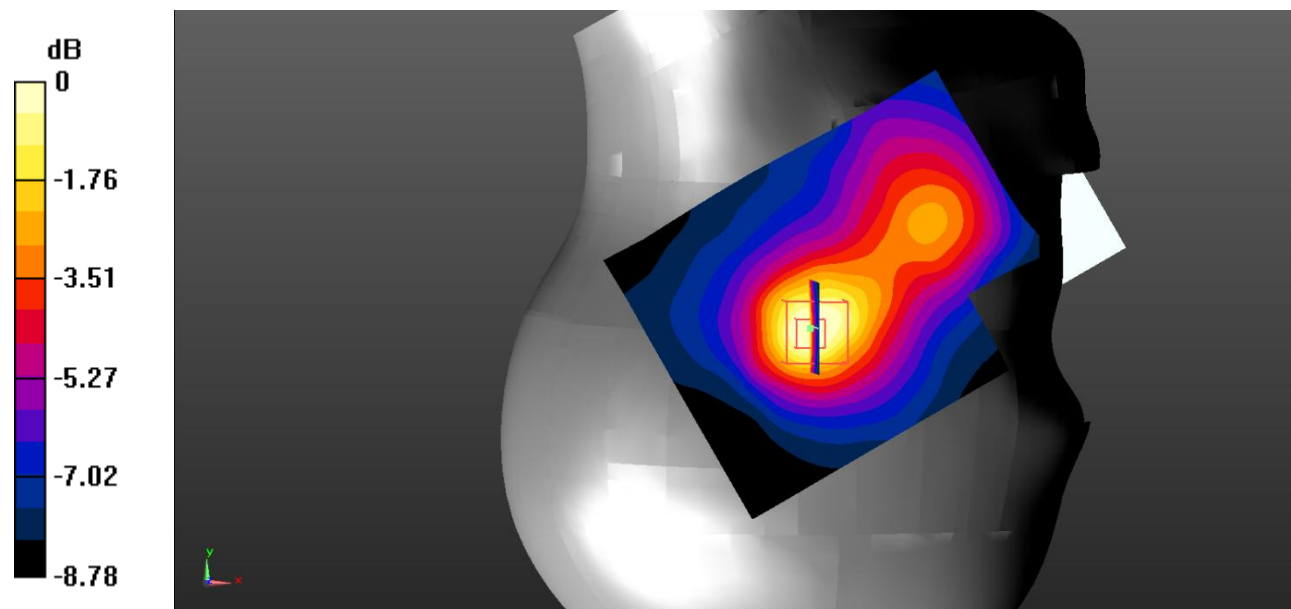
Zoom Scan (5x5x7)/Cube 0: Measurement grid: $dx=8\text{mm}$, $dy=8\text{mm}$, $dz=5\text{mm}$

Reference Value = 6.467 V/m; Power Drift = 0.18 dB

Peak SAR (extrapolated) = 0.205 W/kg

SAR(1 g) = 0.133 W/kg; SAR(10 g) = 0.083 W/kg

Maximum value of SAR (measured) = 0.140 W/kg



0 dB = 0.140 W/kg = -8.54 dBW/kg

Test Plot 14#: PCS 1900_Body Worn Back_Middle

DUT: Mobile Phone; Type: Click C150; Serial: 19103001306;

Communication System: Generic GSM; Frequency: 1880 MHz; Duty Cycle: 1:8
 Medium parameters used: $f = 1880 \text{ MHz}$; $\sigma = 1.378 \text{ S/m}$; $\epsilon_r = 40.977$; $\rho = 1000 \text{ kg/m}^3$;
 Phantom section: Flat Section

DASY5 Configuration:

- Probe: EX3DV4 - SN7522; ConvF(7.91, 7.91, 7.91) @1880 MHz
- Sensor-Surface: 1.4mm (Mechanical Surface Detection)
- Electronics: DAE4 SN1562; Calibrated: 11/6/2018
- Phantom: SAM-Twin V8.0 P1aP2a; Type: QD 000 P41 AA; Serial: 1962
- Measurement SW: DASY52, Version 52.10 (2) ;

Area Scan (71x91x1): Interpolated grid: $dx=1.500 \text{ mm}$, $dy=1.500 \text{ mm}$

Maximum value of SAR (interpolated) = 0.896 W/kg

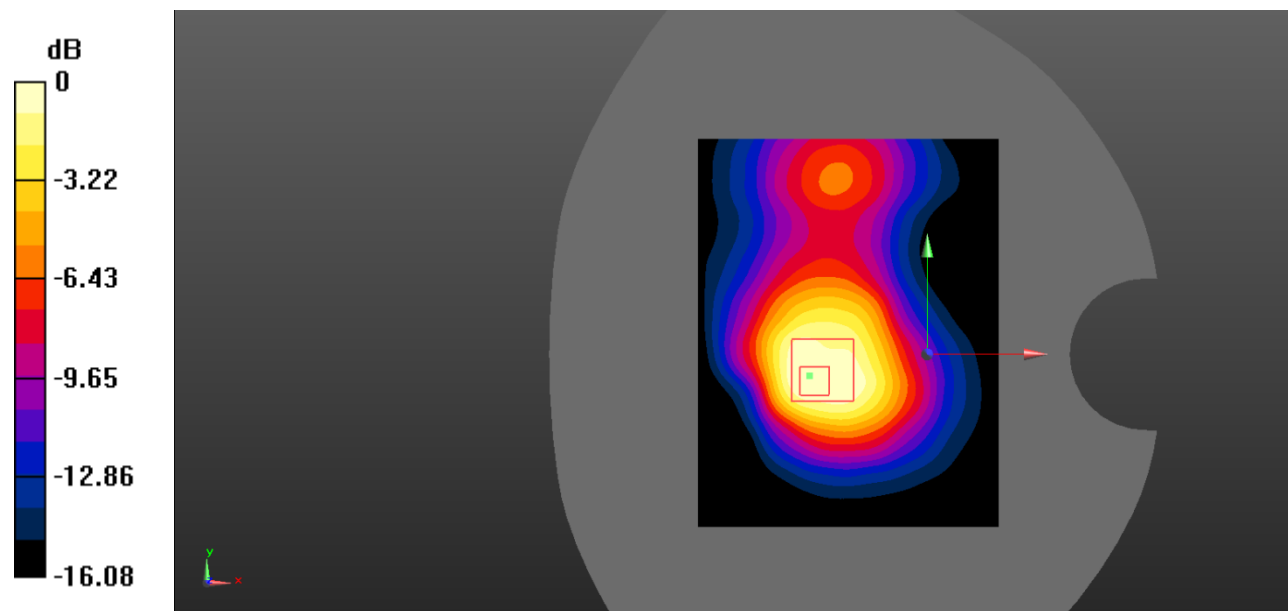
Zoom Scan (5x5x7)/Cube 0: Measurement grid: $dx=8\text{mm}$, $dy=8\text{mm}$, $dz=5\text{mm}$

Reference Value = 20.04 V/m; Power Drift = -0.04 dB

Peak SAR (extrapolated) = 1.33 W/kg

SAR(1 g) = 0.720 W/kg; SAR(10 g) = 0.410 W/kg

Maximum value of SAR (measured) = 0.771 W/kg



0 dB = 0.771 W/kg = -1.13 dBW/kg

Test Plot 15#: PCS 1900_Body Back_Low

DUT: Mobile Phone; Type: Click C150; Serial: 19103001306;

Communication System: Generic GPRS-3 slots; Frequency: 1850.2 MHz; Duty Cycle: 1:2.66
 Medium parameters used: $f = 1850.2 \text{ MHz}$; $\sigma = 1.353 \text{ S/m}$; $\epsilon_r = 41.296$; $\rho = 1000 \text{ kg/m}^3$;
 Phantom section: Flat Section

DASY5 Configuration:

- Probe: EX3DV4 - SN7522; ConvF(7.91, 7.91, 7.91) @1850.2 MHz
- Sensor-Surface: 1.4mm (Mechanical Surface Detection)
- Electronics: DAE4 SN1562; Calibrated: 11/6/2018
- Phantom: SAM-Twin V8.0 P1aP2a; Type: QD 000 P41 AA; Serial: 1962
- Measurement SW: DASY52, Version 52.10 (2) ;

Area Scan (71x91x1): Interpolated grid: dx=1.500 mm, dy=1.500 mm

Maximum value of SAR (interpolated) = 1.27 W/kg

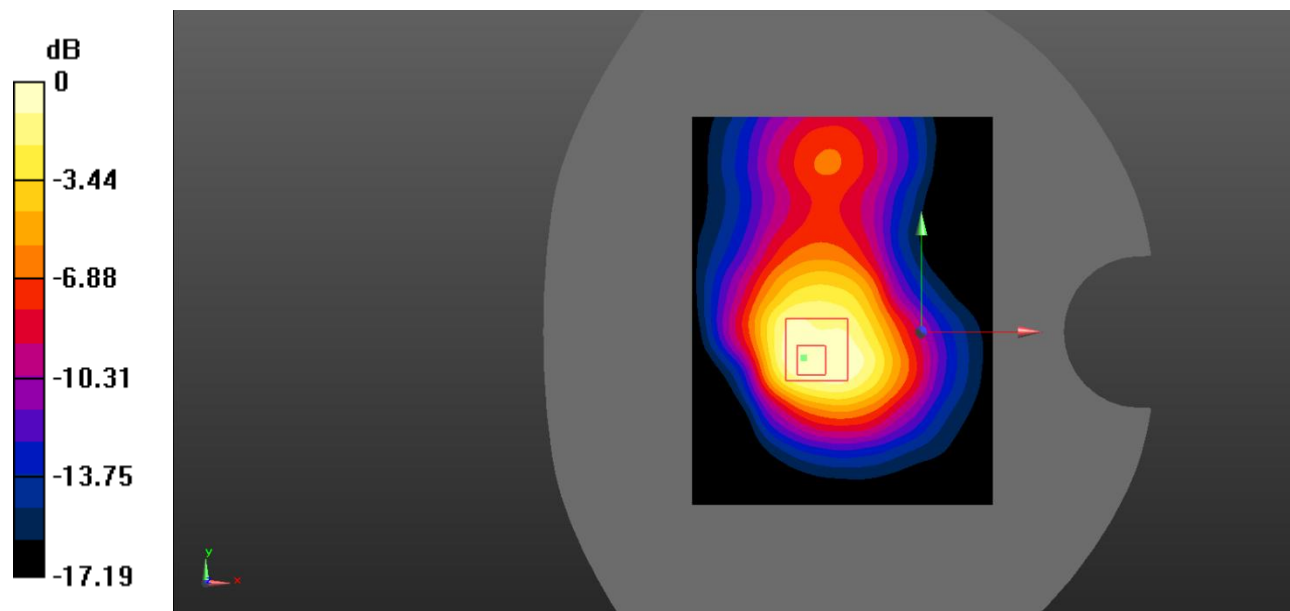
Zoom Scan (5x5x7)/Cube 0: Measurement grid: dx=8mm, dy=8mm, dz=5mm

Reference Value = 24.13 V/m; Power Drift = 0.02 dB

Peak SAR (extrapolated) = 1.90 W/kg

SAR(1 g) = 1.05 W/kg; SAR(10 g) = 0.592 W/kg

Maximum value of SAR (measured) = 1.13 W/kg



0 dB = 1.13 W/kg = 0.53 dBW/kg

Test Plot 16#: PCS 1900_Body Back_Middle

DUT: Mobile Phone; Type: Click C150; Serial: 19103001306;

Communication System: Generic GPRS-3 slots; Frequency: 1880 MHz; Duty Cycle: 1:2.66
 Medium parameters used: $f = 1880 \text{ MHz}$; $\sigma = 1.378 \text{ S/m}$; $\epsilon_r = 40.977$; $\rho = 1000 \text{ kg/m}^3$;
 Phantom section: Flat Section

DASY5 Configuration:

- Probe: EX3DV4 - SN7522; ConvF(7.91, 7.91, 7.91) @1880 MHz
- Sensor-Surface: 1.4mm (Mechanical Surface Detection)
- Electronics: DAE4 SN1562; Calibrated: 11/6/2018
- Phantom: SAM-Twin V8.0 P1aP2a; Type: QD 000 P41 AA; Serial: 1962
- Measurement SW: DASY52, Version 52.10 (2) ;

Area Scan (71x91x1): Interpolated grid: $dx=1.500 \text{ mm}$, $dy=1.500 \text{ mm}$

Maximum value of SAR (interpolated) = 1.11 W/kg

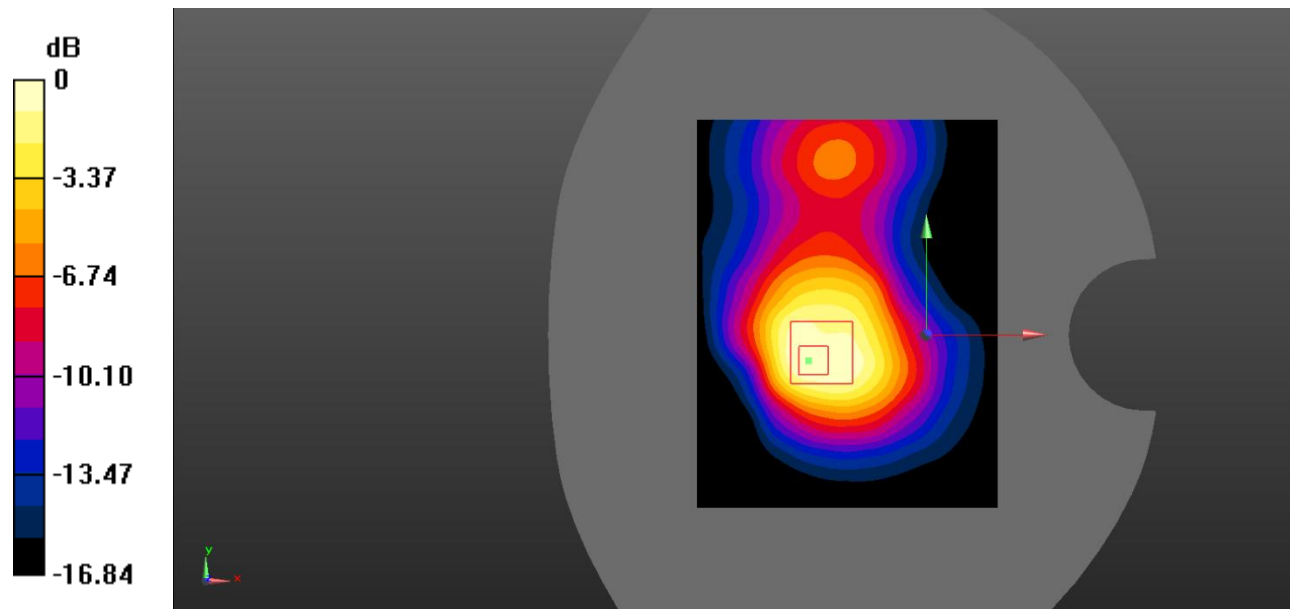
Zoom Scan (5x5x7)/Cube 0: Measurement grid: $dx=8\text{mm}$, $dy=8\text{mm}$, $dz=5\text{mm}$

Reference Value = 22.22 V/m; Power Drift = 0.03 dB

Peak SAR (extrapolated) = 1.63 W/kg

SAR(1 g) = 0.894 W/kg; SAR(10 g) = 0.506 W/kg

Maximum value of SAR (measured) = 0.988 W/kg



0 dB = 0.988 W/kg = -0.05 dBW/kg

Test Plot 17#: PCS 1900_Body Back_High**DUT: Mobile Phone; Type: Click C150; Serial: 19103001306;**

Communication System: Generic GPRS-3 slots; Frequency: 1909.8 MHz; Duty Cycle: 1:2.66
Medium parameters used: $f = 1909.8$ MHz; $\sigma = 1.422$ S/m; $\epsilon_r = 40.215$; $\rho = 1000$ kg/m³ ;
Phantom section: Flat Section

DASY5 Configuration:

- Probe: EX3DV4 - SN7522; ConvF(7.91, 7.91, 7.91) @1909.8 MHz
- Sensor-Surface: 1.4mm (Mechanical Surface Detection)
- Electronics: DAE4 SN1562; Calibrated: 11/6/2018
- Phantom: SAM-Twin V8.0 P1aP2a; Type: QD 000 P41 AA; Serial: 1962
- Measurement SW: DASY52, Version 52.10 (2) ;

Area Scan (71x91x1): Interpolated grid: dx=1.500 mm, dy=1.500 mm

Maximum value of SAR (interpolated) = 0.856 W/kg

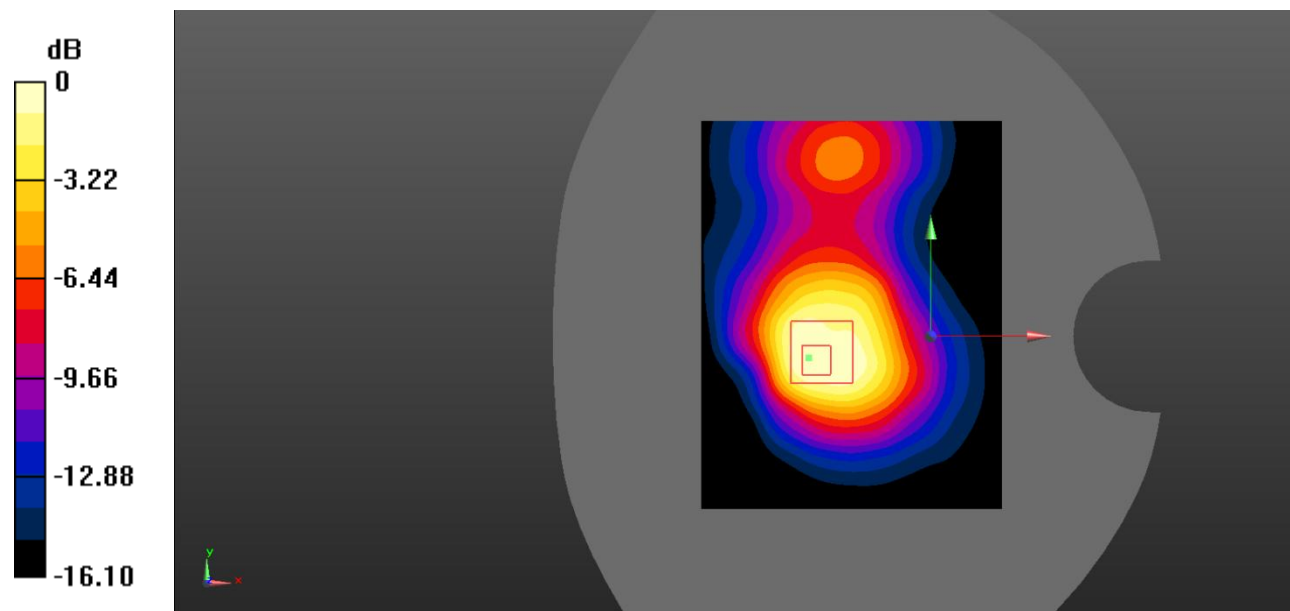
Zoom Scan (5x5x7)/Cube 0: Measurement grid: dx=8mm, dy=8mm, dz=5mm

Reference Value = 19.17 V/m; Power Drift = 0.10 dB

Peak SAR (extrapolated) = 1.25 W/kg

SAR(1 g) = 0.679 W/kg; SAR(10 g) = 0.385 W/kg

Maximum value of SAR (measured) = 0.726 W/kg



Test Plot 18#: PCS 1900_Body Bottom_Middle

DUT: Mobile Phone; Type: Click C150; Serial: 19103001306;

Communication System: Generic GPRS-3 slots; Frequency: 1880 MHz; Duty Cycle: 1:2.66
 Medium parameters used: $f = 1880 \text{ MHz}$; $\sigma = 1.378 \text{ S/m}$; $\epsilon_r = 40.977$; $\rho = 1000 \text{ kg/m}^3$;
 Phantom section: Flat Section

DASY5 Configuration:

- Probe: EX3DV4 - SN7522; ConvF(7.91, 7.91, 7.91) @1880 MHz
- Sensor-Surface: 1.4mm (Mechanical Surface Detection)
- Electronics: DAE4 SN1562; Calibrated: 11/6/2018
- Phantom: SAM-Twin V8.0 P1aP2a; Type: QD 000 P41 AA; Serial: 1962
- Measurement SW: DASY52, Version 52.10 (2) ;

Area Scan (71x91x1): Interpolated grid: $dx=1.500 \text{ mm}$, $dy=1.500 \text{ mm}$

Maximum value of SAR (interpolated) = 0.517 W/kg

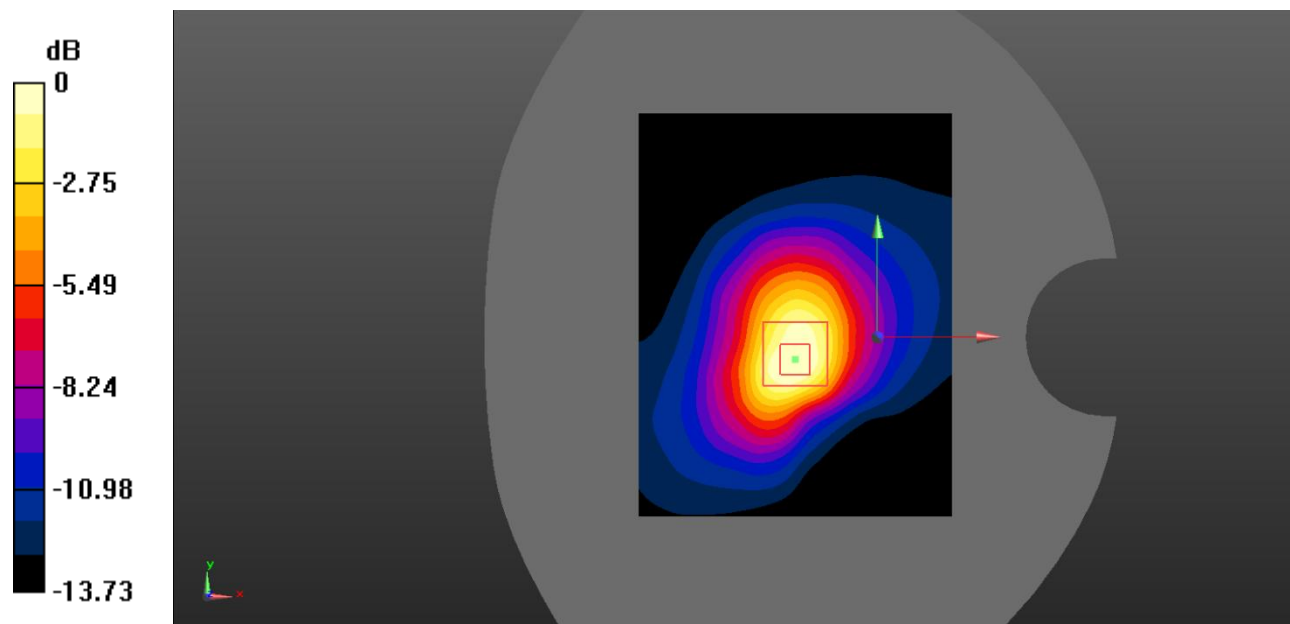
Zoom Scan (5x5x7)/Cube 0: Measurement grid: $dx=8\text{mm}$, $dy=8\text{mm}$, $dz=5\text{mm}$

Reference Value = 17.31 V/m; Power Drift = -0.16 dB

Peak SAR (extrapolated) = 0.713 W/kg

SAR(1 g) = 0.395 W/kg; SAR(10 g) = 0.213 W/kg

Maximum value of SAR (measured) = 0.434 W/kg



0 dB = 0.434 W/kg = -3.63 dBW/kg