

ShenZhen QiXinTongDa Technology Co.,Ltd.

Antenna Test Report

Project Name: L5050

Frequency Band:

G2/3/5/8+W1/2/4/5/8+

FDD2/3/4/5/7/17/28AB+TDD38

DATE: 2023-09-06

1.Test Project

	Test Project	Equipment
1. S Parameter	1. Return Loss(RL) 2. VSWR	Network Analyzer: Agilent 5071B
2. RF Test (2G+3G+4G)	1. power 2. level 3.TRP/TIS	Comprehensive Test: CMW500/8960 Test Environment: Anechoic Chamber

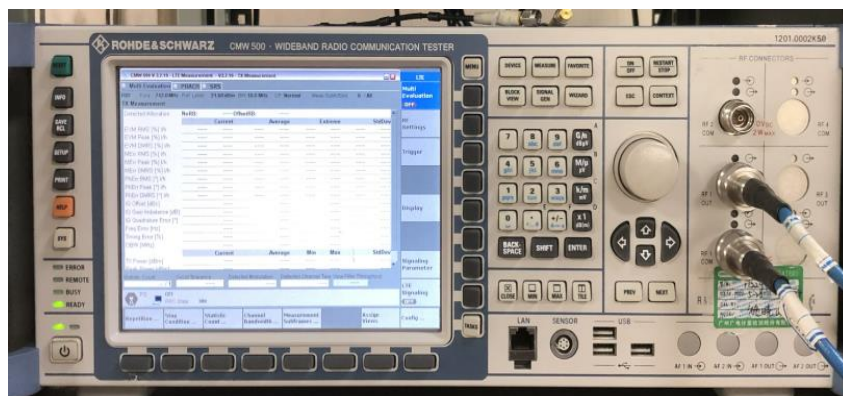
2. Test Equipment



Agilent 5071B (S Parameter (RL/VSWR) Test Equipment)

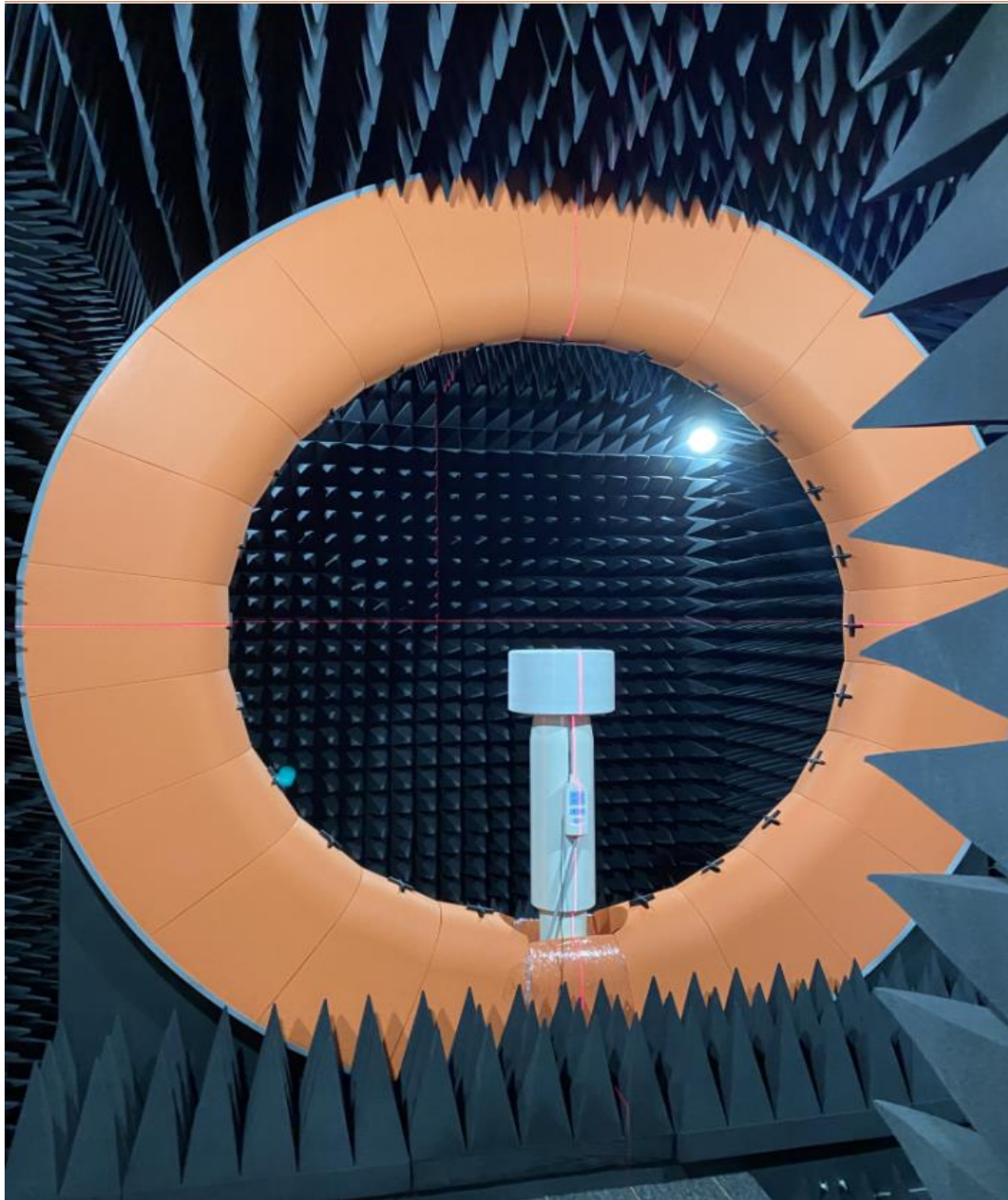


Agilent 8960 (2G/3G Test Equipment)



CMW 500 (2G/3G/4G Test Equipment)

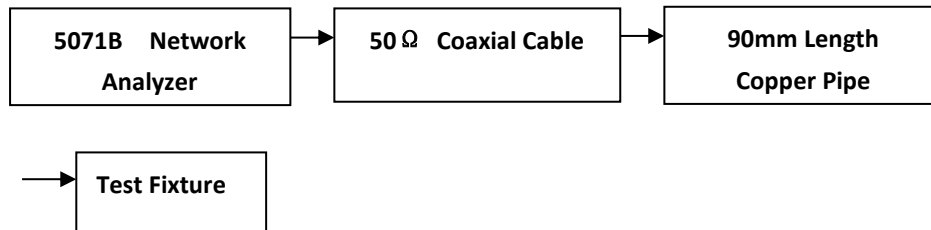
3. TestEnvironment



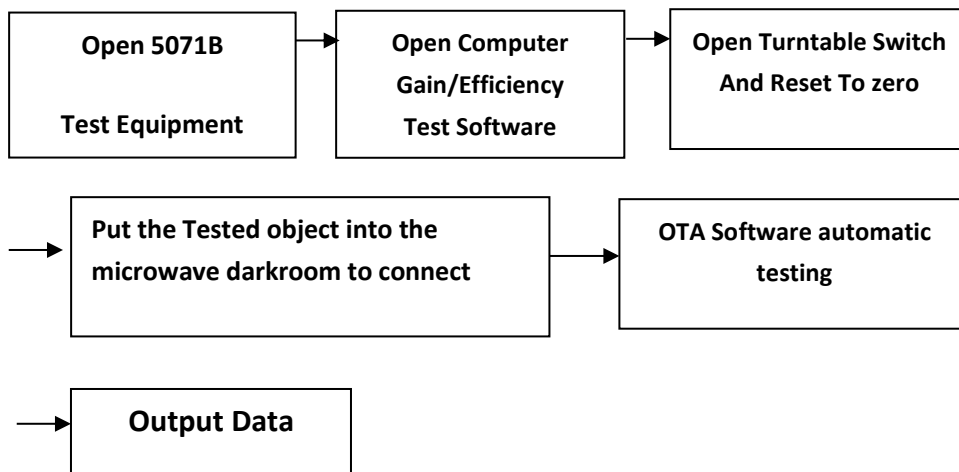
Microwave Anechoic Chamber

4. Test Steps

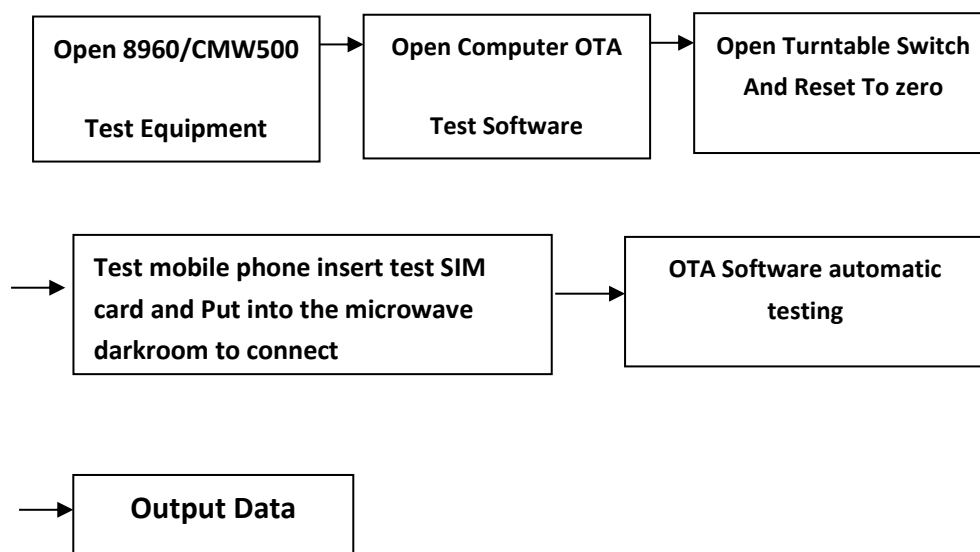
Passive VSWR/RL Test Steps:



Gain/Efficiency Test Steps:



Active TRP/TIS Test Steps:



6.Introduction to Antenna Information

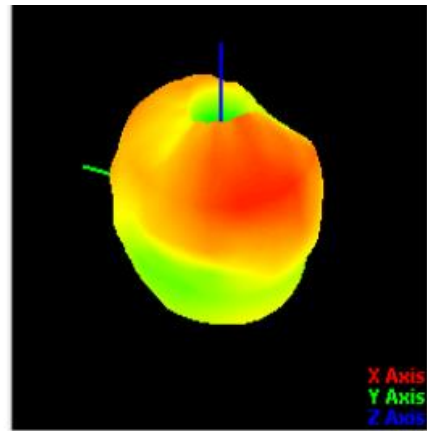
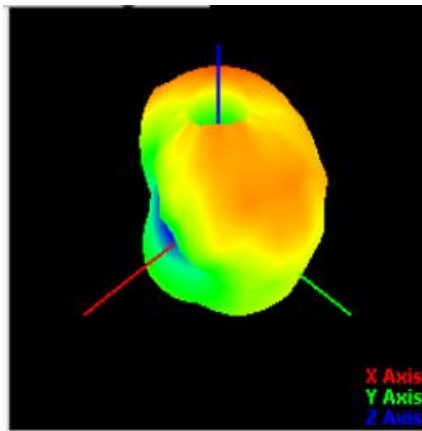
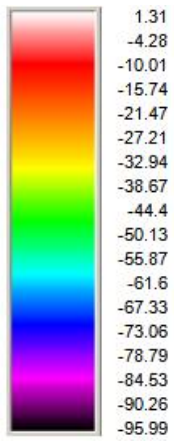
L5050-32EA	
Antenna type and frequency band	<p>MAIN ANTENNA (PIFA) : 2G/3G/4G (G2/3/5/8+W1/2/4/5/8+ FDD2/3/4/5/7/17/28AB+TDD38)</p> <p>DIV ANTENNA (PIFA) : 2G/3G/4G</p> <p>GPS/WIFI/BT ANTENNA (PIFA) : L1/2. 4GWIFI/ BT</p>
Antenna materia	FPC

7.Antenna Gain

Band	Max Gain	Efficiency
GSM850	-3.65	25.1%
GSM900	-3.16	26.2%
DCS1800	1.03	38.9%
PCS1900	-1.25	34.8%
WCDMA2100	-0.77	27.8%
WCDMA1900	-1.25	34.8%
WCDMA1700	-0.77	27.8%
WCDMA850	-3.65	25.1%
WCDMA900	-3.16	26.2%
BAND 2	-1.25	34.8%
BAND 3	1.03	38.9%
BAND 4	-0.77	27.8%
BAND 5	-3.65	25.1%
BAND 7	2.51	37.5%
BAND 17	-4.68	21.3%
BAND 28	-4.68	21.3%
BAND 38	2.51	37.5%
GPS	0.42	38.5%
2.4GWIFI	1.31	35.2%
BT	1.31	35.2%

8.3D Lobe Diagram

2.4G-WIFI/BT



9.2D Lobe Diagram

2.4G-WIFI/BT

