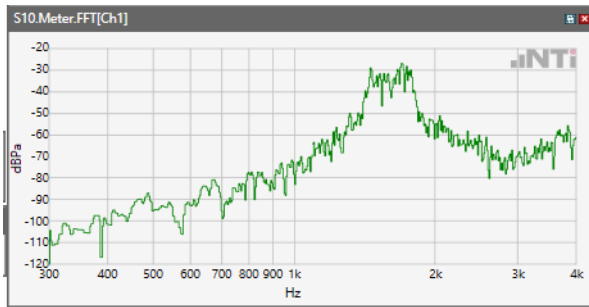
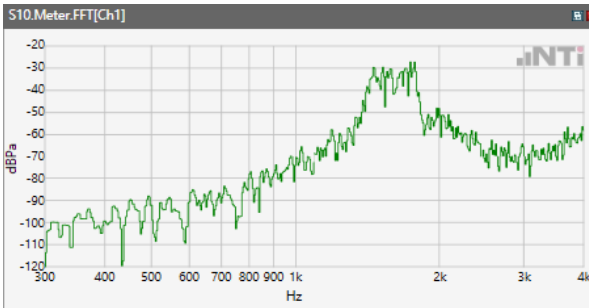


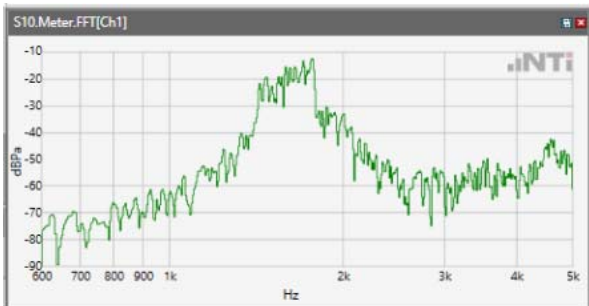
ANSI/TIA 5050-2018 \ 2N HAC ON \ WB 12.65kbps\ 5.2 Receive path – distortion and noise\ WCDM Band IV



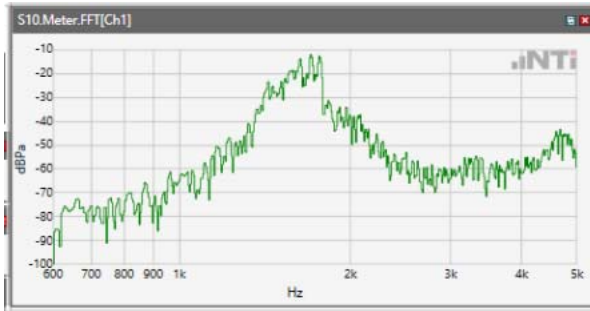
ANSI/TIA 5050-2018 \ 2N HAC ON \ WB 12.65kbps\ 5.2 Receive path – distortion and noise\ WCDM Band V



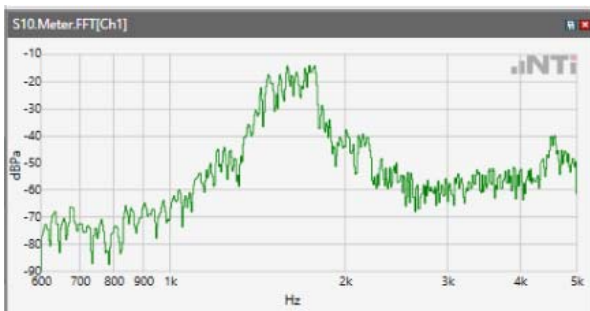
ANSI/TIA 5050-2018 \ 2N HAC ON \ WB 12.65kbps\ 5.2 Receive path – distortion and noise\ LTE Band 2



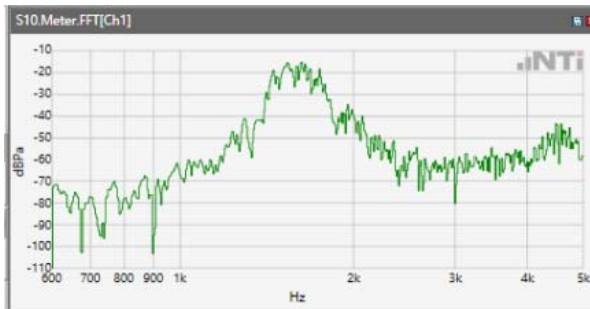
ANSI/TIA 5050-2018 \ 2N HAC ON \ WB 12.65kbps\ 5.2 Receive path – distortion and noise\ LTE Band 4



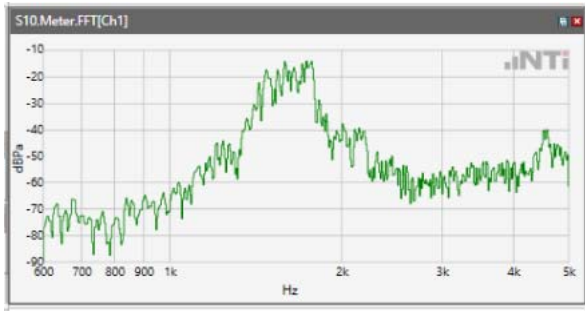
ANSI/TIA 5050-2018 \ 2N HAC ON \ WB 12.65kbps\ 5.2 Receive path – distortion and noise\ LTE Band 5



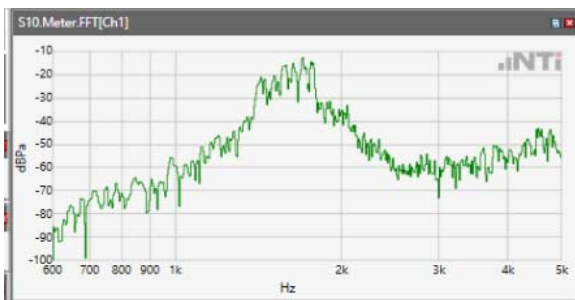
ANSI/TIA 5050-2018 \ 2N HAC ON \ WB 12.65kbps\ 5.2 Receive path – distortion and noise\ LTE Band 12



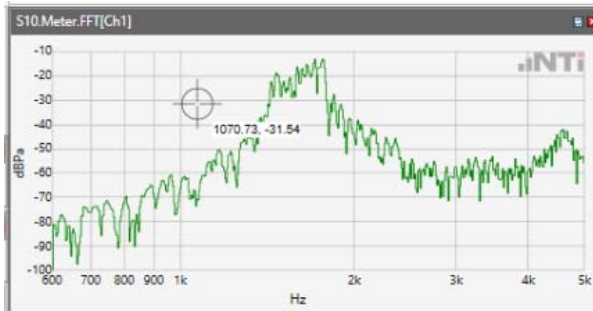
ANSI/TIA 5050-2018 \ 2N HAC ON \ WB 12.65kbps\ 5.2 Receive path – distortion and noise\ LTE Band 17



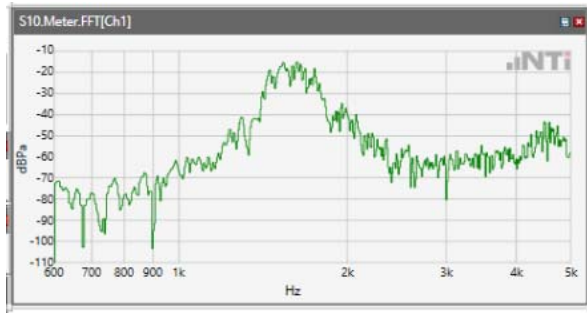
ANSI/TIA 5050-2018 \ 2N HAC ON \ WB 12.65kbps\ 5.2 Receive path – distortion and noise\ LTE Band 25



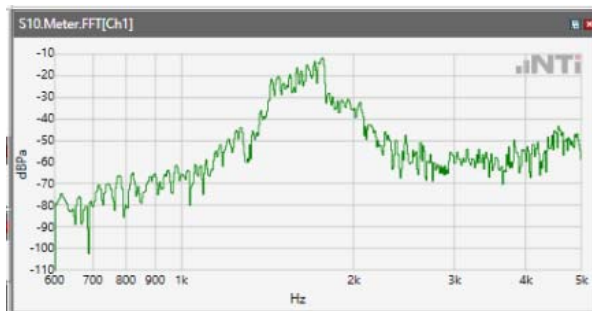
ANSI/TIA 5050-2018 \ 2N HAC ON \ WB 12.65kbps\ 5.2 Receive path – distortion and noise\ LTE Band 26



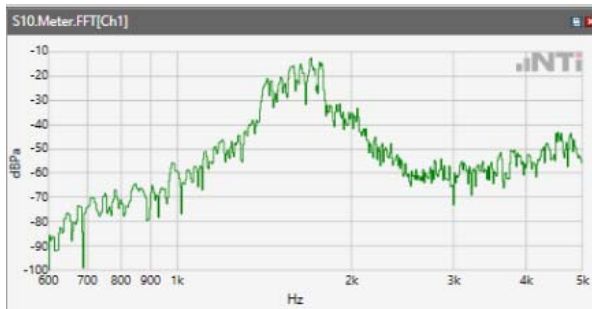
ANSI/TIA 5050-2018 \ 2N HAC ON \ WB 12.65kbps\ 5.2 Receive path – distortion and noise\ LTE Band 41



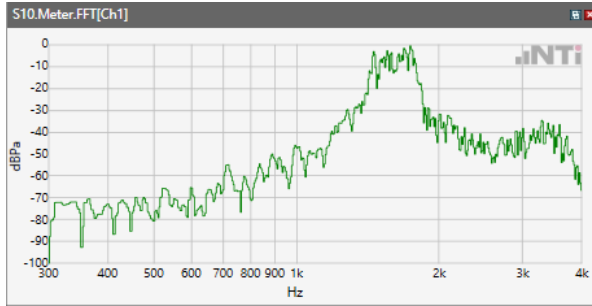
ANSI/TIA 5050-2018 \ 2N HAC ON \ WB 12.65kbps\ 5.2 Receive path – distortion and noise\ LTE Band 66



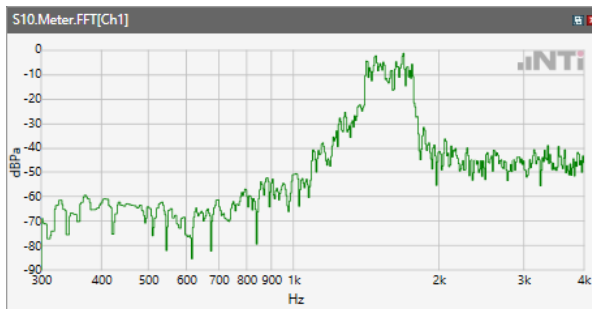
ANSI/TIA 5050-2018 \ 2N HAC ON \ WB 12.65kbps\ 5.2 Receive path – distortion and noise\ LTE Band 71



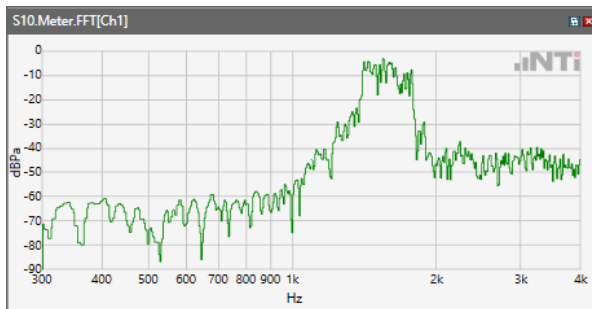
ANSI/TIA 5050-2018 \ 2N HAC ON \ WB 12.65kbps\ 5.2 Receive path – distortion and noise\WLAN
2.4GHz



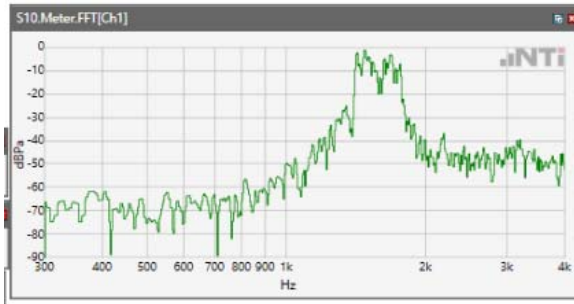
ANSI/TIA 5050-2018 \ 2N HAC ON \ WB 12.65kbps\ 5.2 Receive path – distortion and noise\ WLAN
5.2GHz



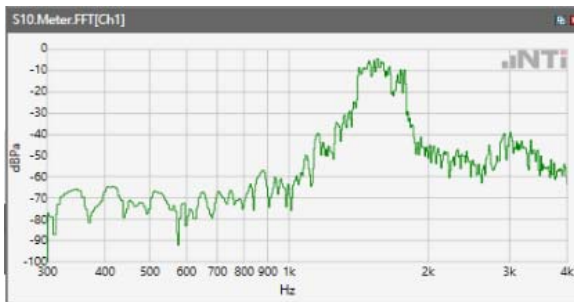
ANSI/TIA 5050-2018 \ 2N HAC ON \ WB 12.65kbps\ 5.2 Receive path – distortion and noise\ WLAN
5.3GHz



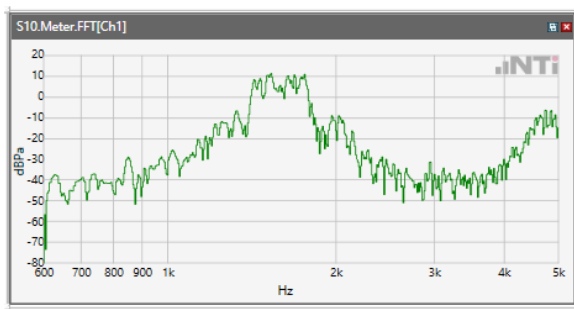
ANSI/TIA 5050-2018 \ 2N HAC ON \ WB 12.65kbps\ 5.2 Receive path – distortion and noise\ WLAN 5.5GHz



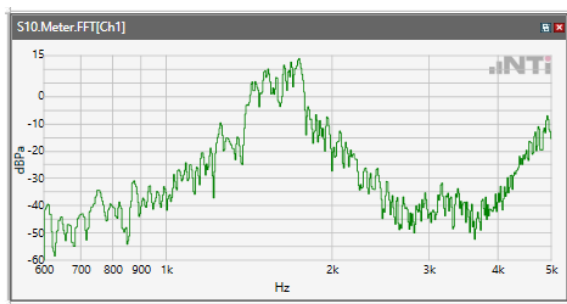
ANSI/TIA 5050-2018 \ 2N HAC ON \ WB 12.65kbps\ 5.2 Receive path – distortion and noise\ WLAN 5.8GHz



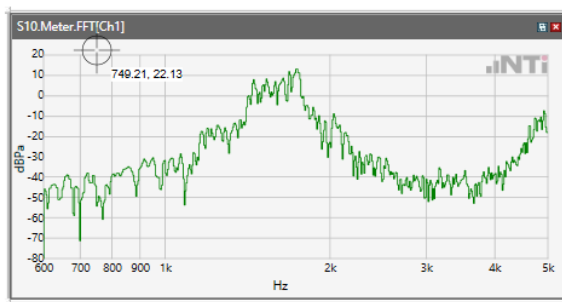
ANSI/TIA 5050-2018 \ 2N HAC ON \ WB 14.25kbps\ 5.2 Receive path – distortion and noise\ WCDMA Band V



ANSI/TIA 5050-2018 \ 2N HAC ON \ WB 14.25kbps\ 5.2 Receive path – distortion and noise\ LTE Band 2

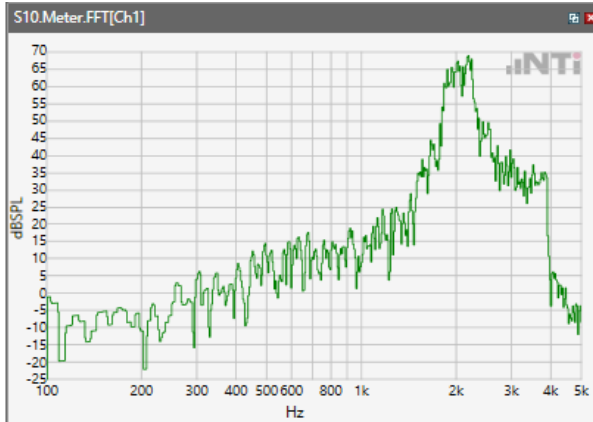


ANSI/TIA 5050-2018 \ 2N HAC ON \ WB 14.25kbps\ 5.2 Receive path – distortion and noise\ LTE Band 41

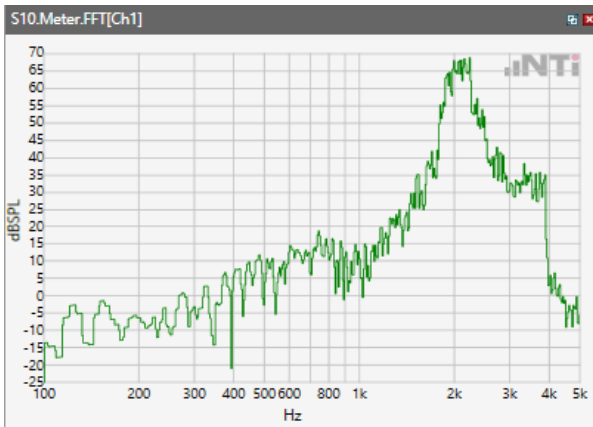


Receive path - distortion and noise 2000Hz WB&NB

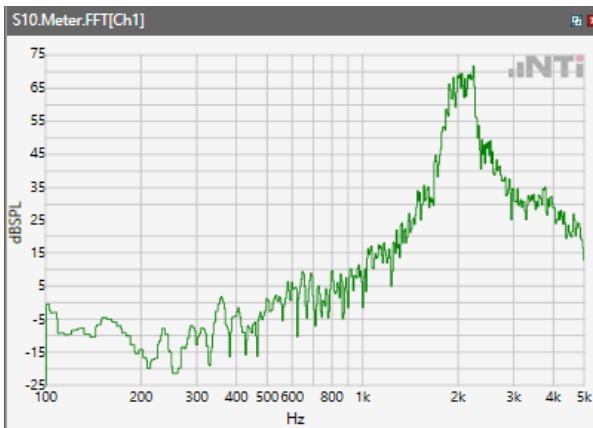
ANSI/TIA 5050-2018 \ 2N HAC ON \ WB 12.65kbps\ 5.2 Receive path – distortion and noise\GSM 850



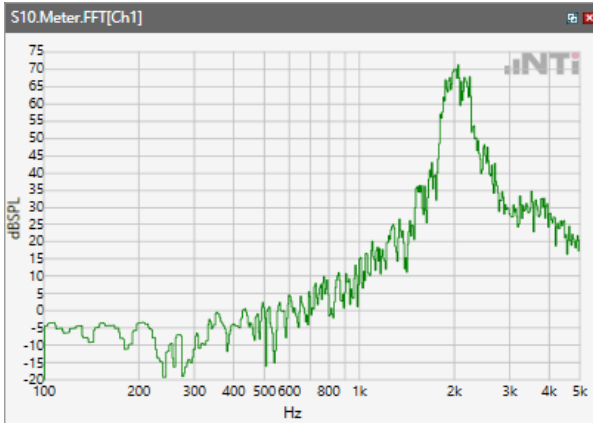
ANSI/TIA 5050-2018 \ 2N HAC ON \ WB 12.65kbps\ 5.2 Receive path – distortion and noise\GSM 1900



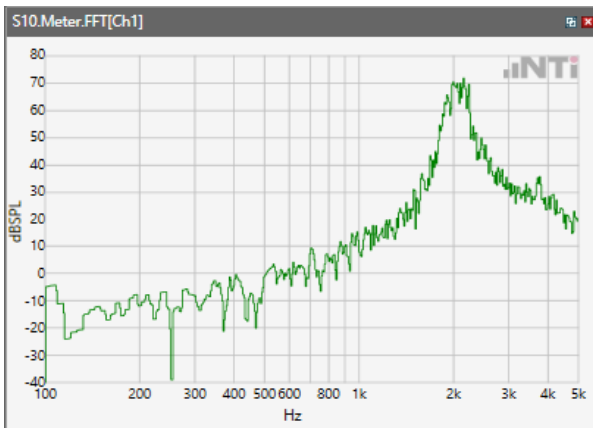
ANSI/TIA 5050-2018 \ 2N HAC ON \ WB 12.65kbps\ 5.2 Receive path – distortion and noise\WCDM Band II



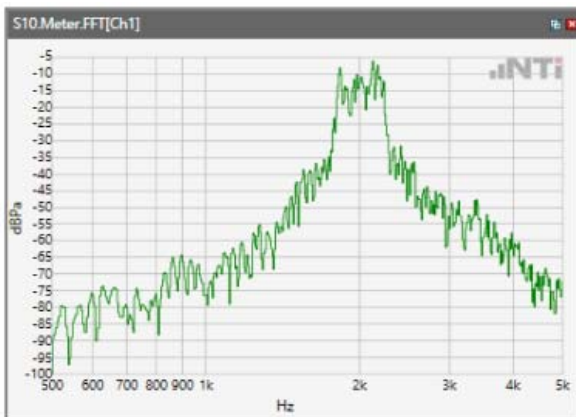
ANSI/TIA 5050-2018 \ 2N HAC ON \ WB 12.65kbps\ 5.2 Receive path – distortion and noise\ WCDM Band IV



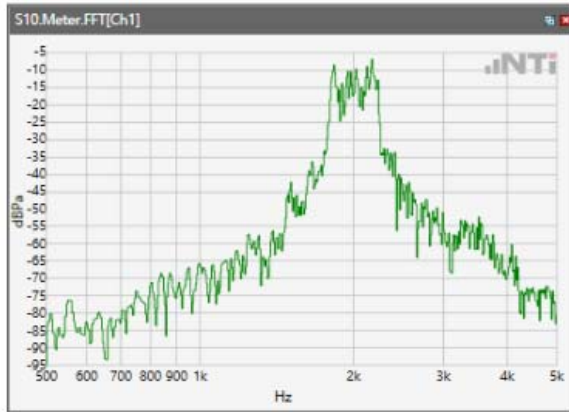
ANSI/TIA 5050-2018 \ 2N HAC ON \ WB 12.65kbps\ 5.2 Receive path – distortion and noise\ WCDM Band V



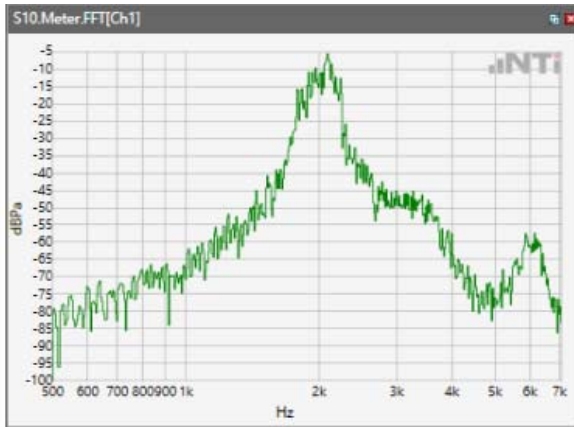
ANSI/TIA 5050-2018 \ 2N HAC ON \ WB 12.65kbps\ 5.2 Receive path – distortion and noise\ LTE Band 2



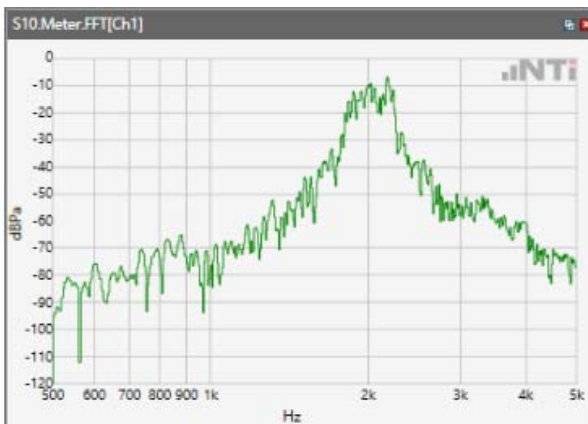
ANSI/TIA 5050-2018 \ 2N HAC ON \ WB 12.65kbps\ 5.2 Receive path – distortion and noise\ LTE Band 4



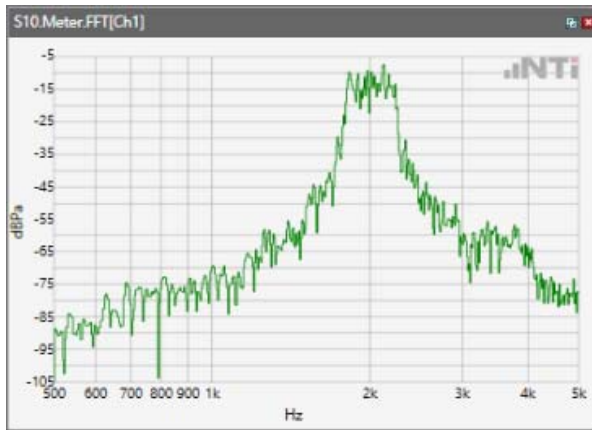
ANSI/TIA 5050-2018 \ 2N HAC ON \ WB 12.65kbps\ 5.2 Receive path – distortion and noise\ LTE Band 5



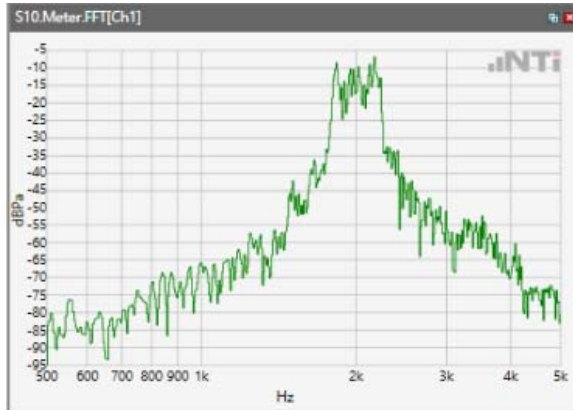
ANSI/TIA 5050-2018 \ 2N HAC ON \ WB 12.65kbps\ 5.2 Receive path – distortion and noise\ LTE Band 12



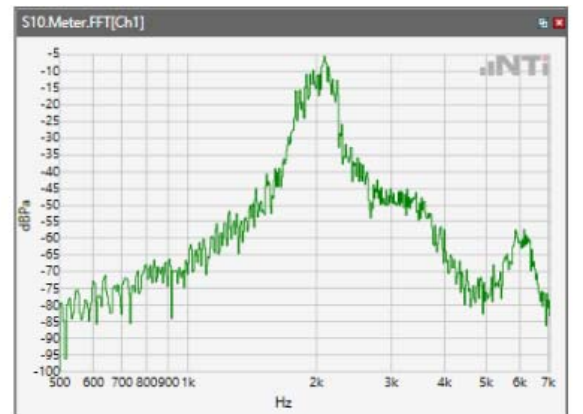
ANSI/TIA 5050-2018 \ 2N HAC ON \ WB 12.65kbps\ 5.2 Receive path – distortion and noise\ LTE Band 17



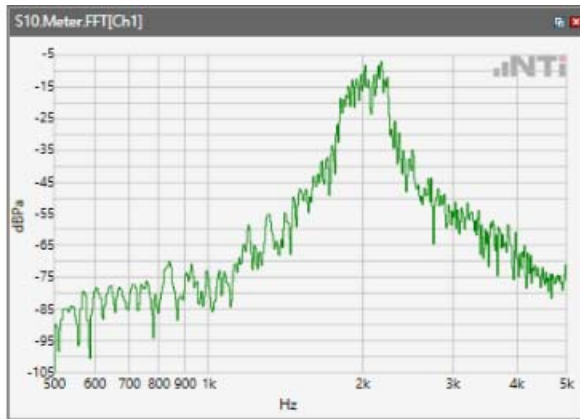
ANSI/TIA 5050-2018 \ 2N HAC ON \ WB 12.65kbps\ 5.2 Receive path – distortion and noise\ LTE Band 25



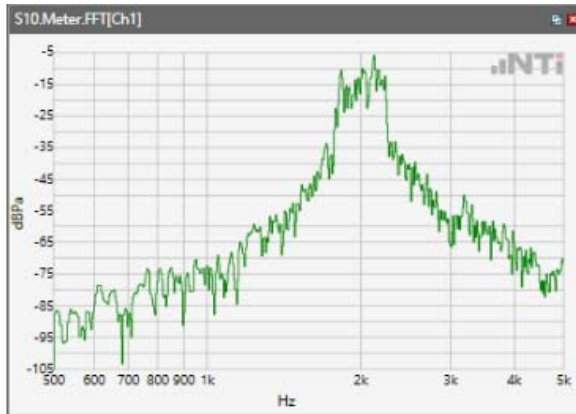
ANSI/TIA 5050-2018 \ 2N HAC ON \ WB 12.65kbps\ 5.2 Receive path – distortion and noise\ LTE Band 26



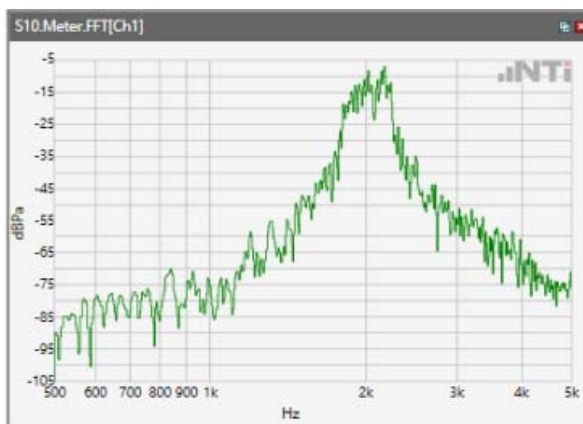
ANSI/TIA 5050-2018 \ 2N HAC ON \ WB 12.65kbps\ 5.2 Receive path – distortion and noise\ LTE Band 41



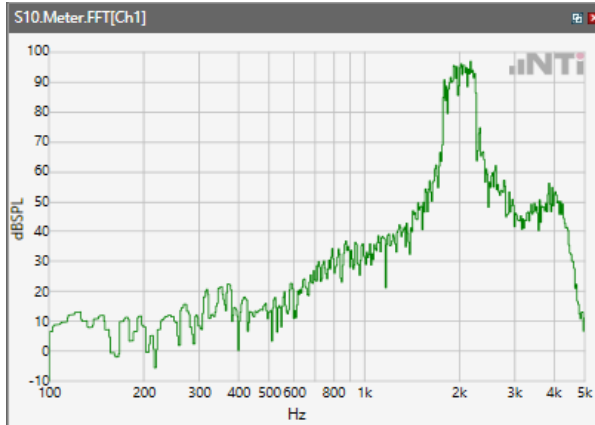
ANSI/TIA 5050-2018 \ 2N HAC ON \ WB 12.65kbps\ 5.2 Receive path – distortion and noise\ LTE Band 66



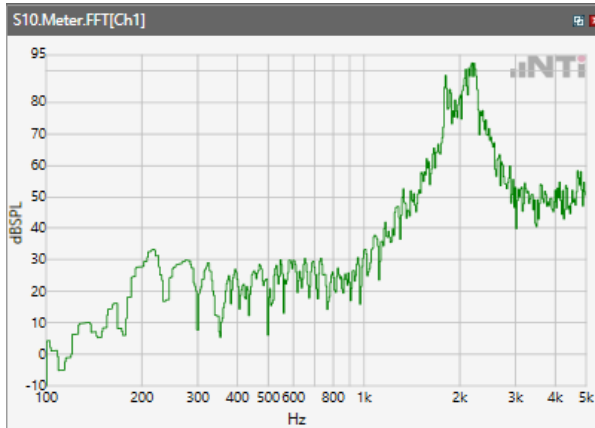
ANSI/TIA 5050-2018 \ 2N HAC ON \ WB 12.65kbps\ 5.2 Receive path – distortion and noise\ LTE Band 71



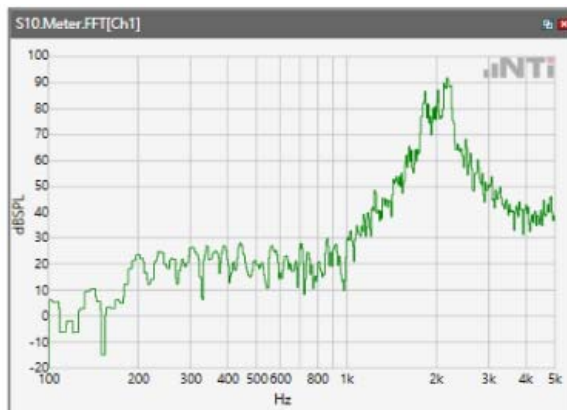
ANSI/TIA 5050-2018 \ 2N HAC ON \ WB 12.65kbps\ 5.2 Receive path – distortion and noise\WLAN 2.4GHz



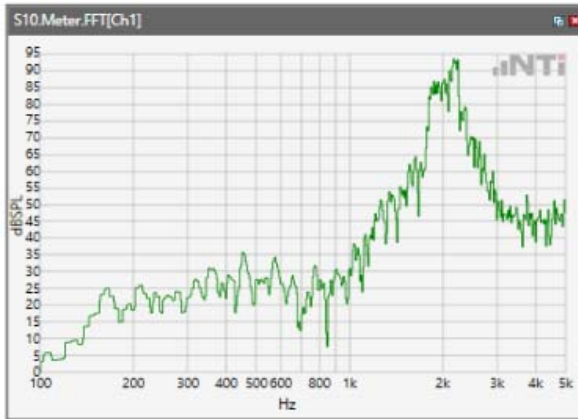
ANSI/TIA 5050-2018 \ 2N HAC ON \ WB 12.65kbps\ 5.2 Receive path – distortion and noise\ WLAN 5.2GHz



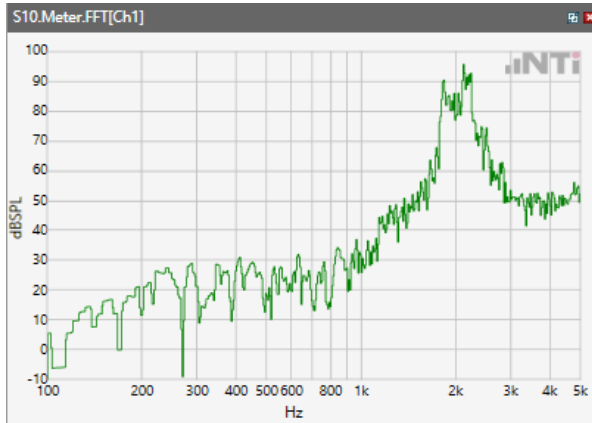
ANSI/TIA 5050-2018 \ 2N HAC ON \ WB 12.65kbps\ 5.2 Receive path – distortion and noise\ WLAN 5.3GHz



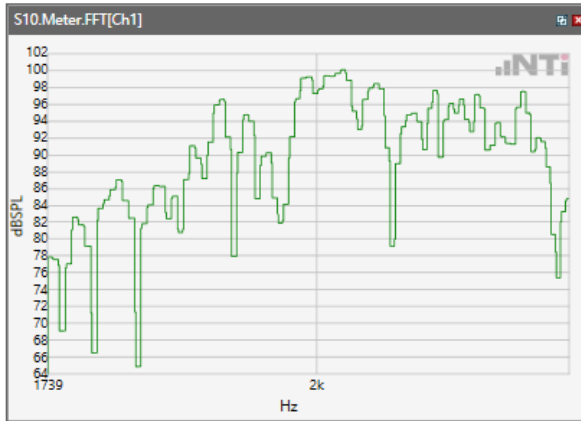
ANSI/TIA 5050-2018 \ 2N HAC ON \ WB 12.65kbps\ 5.2 Receive path – distortion and noise\ WLAN 5.5GHz



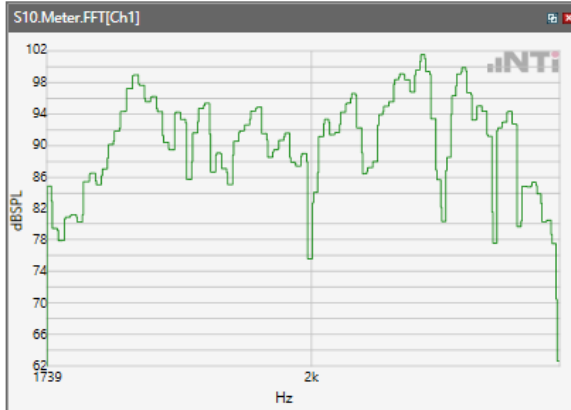
ANSI/TIA 5050-2018 \ 2N HAC ON \ WB 12.65kbps\ 5.2 Receive path – distortion and noise\ WLAN 5.8GHz



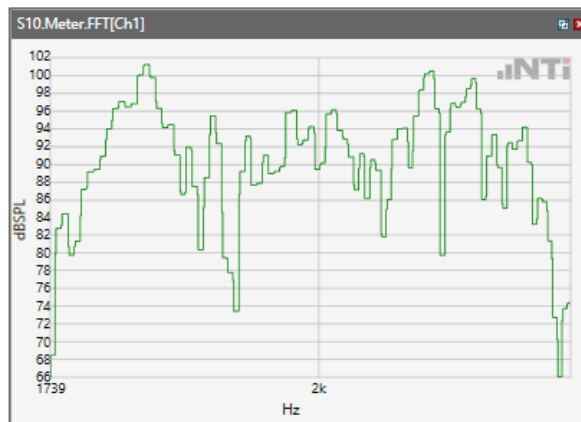
ANSI/TIA 5050-2018 \ 2N HAC ON \ WB 14.25kbps\ 5.2 Receive path – distortion and noise\WCDMA Band V



ANSI/TIA 5050-2018 \ 2N HAC ON \ WB 14.25kbps\ 5.2 Receive path – distortion and noise\ LTE Band 2

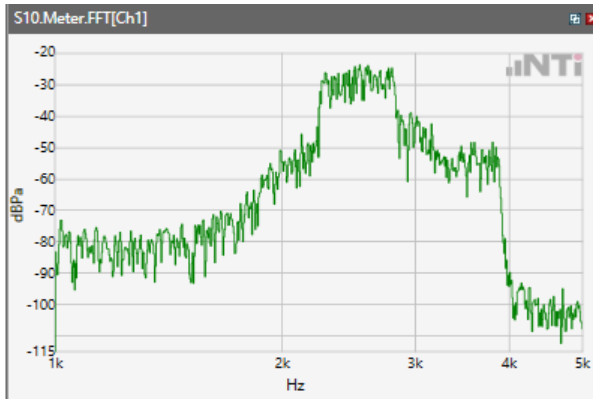


ANSI/TIA 5050-2018 \ 2N HAC ON \ WB 14.25kbps\ 5.2 Receive path – distortion and noise\ LTE Band 41

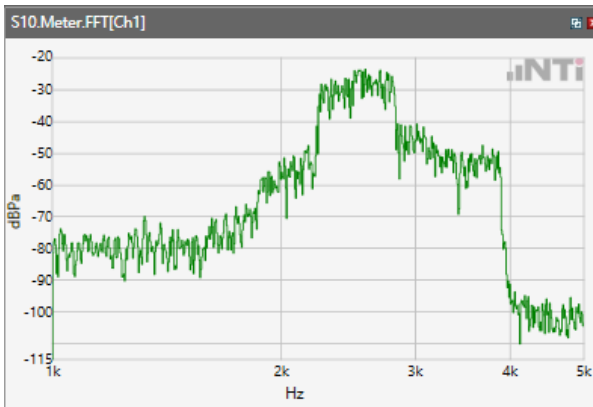


Receive path - distortion and noise 2500Hz WB&NB

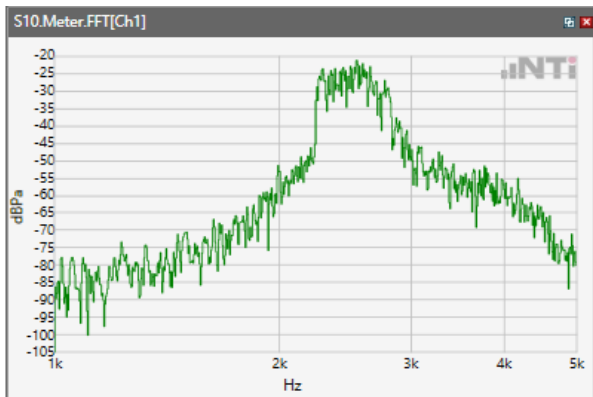
ANSI/TIA 5050-2018 \ 2N HAC ON \ WB 12.65kbps\ 5.2 Receive path – distortion and noise\GSM 850



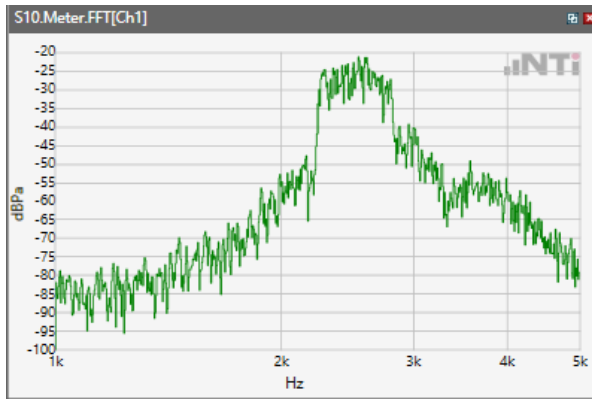
ANSI/TIA 5050-2018 \ 2N HAC ON \ WB 12.65kbps\ 5.2 Receive path – distortion and noise\GSM 1900



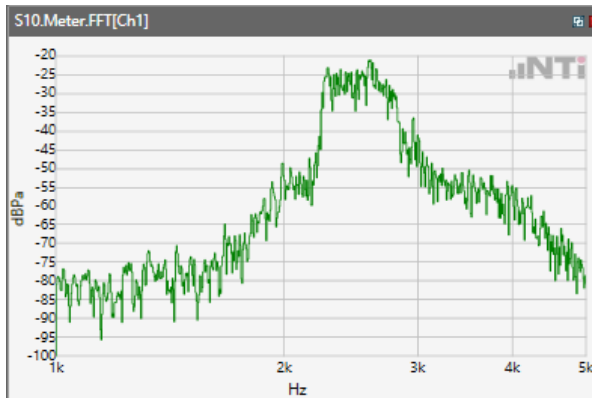
ANSI/TIA 5050-2018 \ 2N HAC ON \ WB 12.65kbps\ 5.2 Receive path – distortion and noise\WCDM Band II



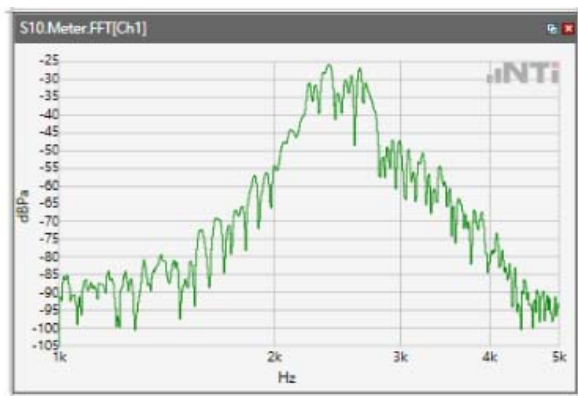
ANSI/TIA 5050-2018 \ 2N HAC ON \ WB 12.65kbps\ 5.2 Receive path – distortion and noise\ WCDM Band IV



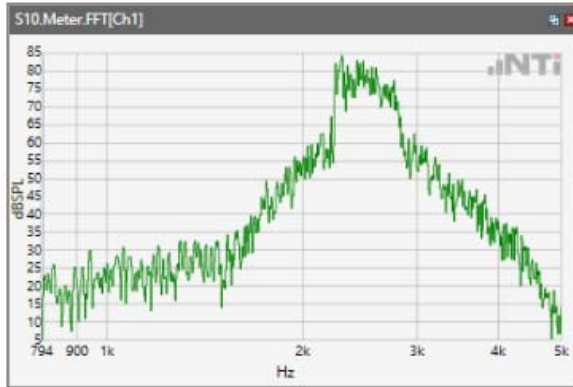
ANSI/TIA 5050-2018 \ 2N HAC ON \ WB 12.65kbps\ 5.2 Receive path – distortion and noise\ WCDM Band V



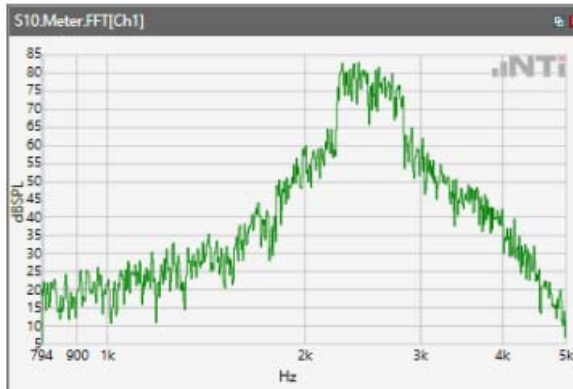
ANSI/TIA 5050-2018 \ 2N HAC ON \ WB 12.65kbps\ 5.2 Receive path – distortion and noise\ LTE Band 2



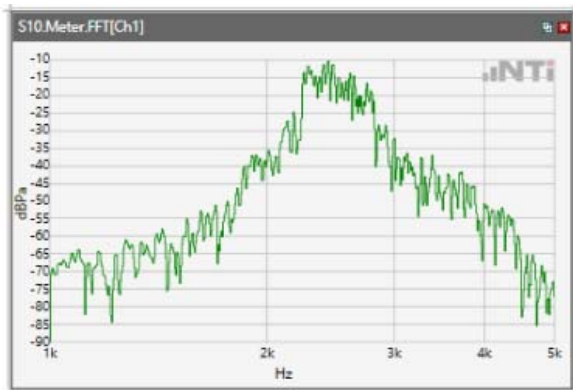
ANSI/TIA 5050-2018 \ 2N HAC ON \ WB 12.65kbps\ 5.2 Receive path – distortion and noise\ LTE Band 4



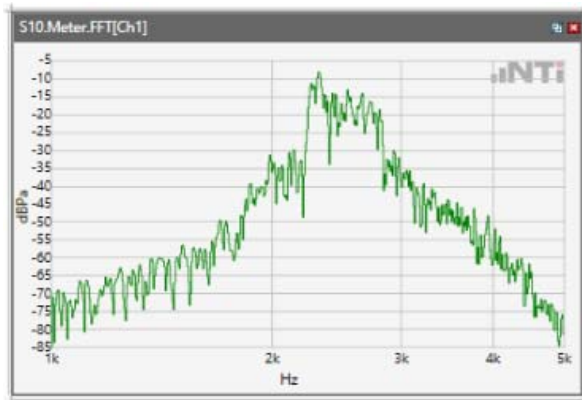
ANSI/TIA 5050-2018 \ 2N HAC ON \ WB 12.65kbps\ 5.2 Receive path – distortion and noise\ LTE Band 5



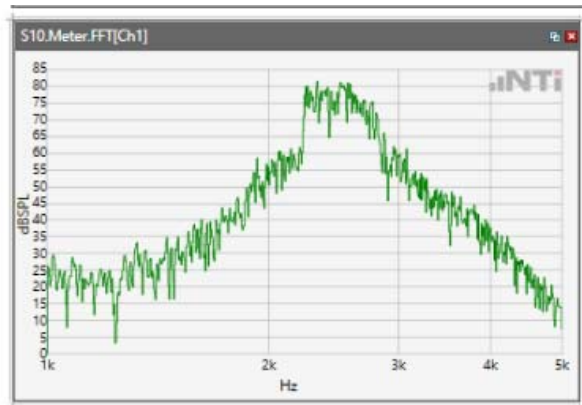
ANSI/TIA 5050-2018 \ 2N HAC ON \ WB 12.65kbps\ 5.2 Receive path – distortion and noise\ LTE Band 12



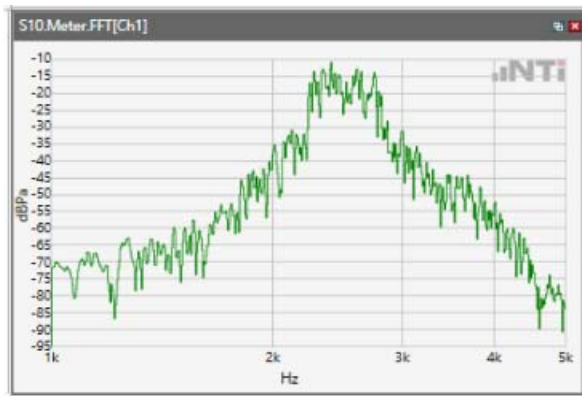
ANSI/TIA 5050-2018 \ 2N HAC ON \ WB 12.65kbps\ 5.2 Receive path – distortion and noise\ LTE Band 17



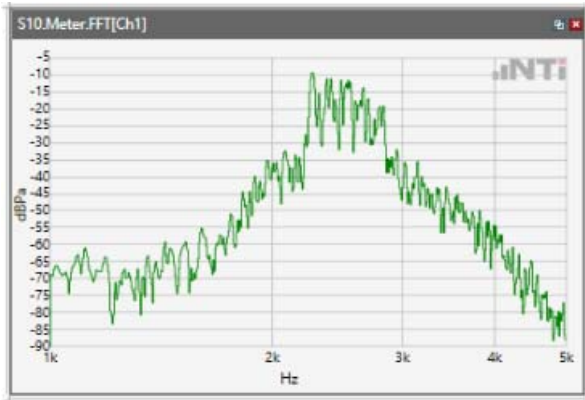
ANSI/TIA 5050-2018 \ 2N HAC ON \ WB 12.65kbps\ 5.2 Receive path – distortion and noise\ LTE Band 25



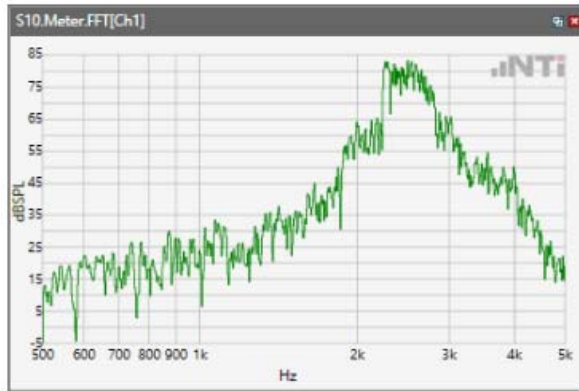
ANSI/TIA 5050-2018 \ 2N HAC ON \ WB 12.65kbps\ 5.2 Receive path – distortion and noise\ LTE Band 26



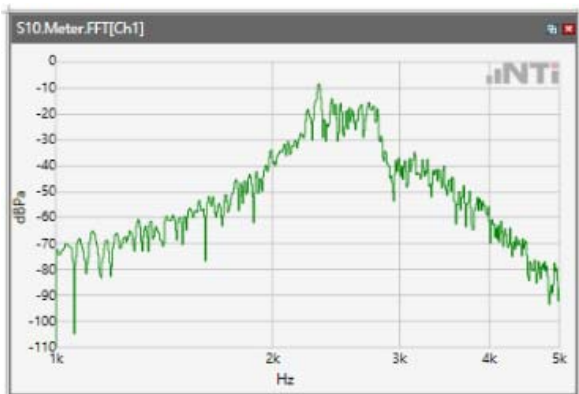
ANSI/TIA 5050-2018 \ 2N HAC ON \ WB 12.65kbps\ 5.2 Receive path – distortion and noise\ LTE Band 41



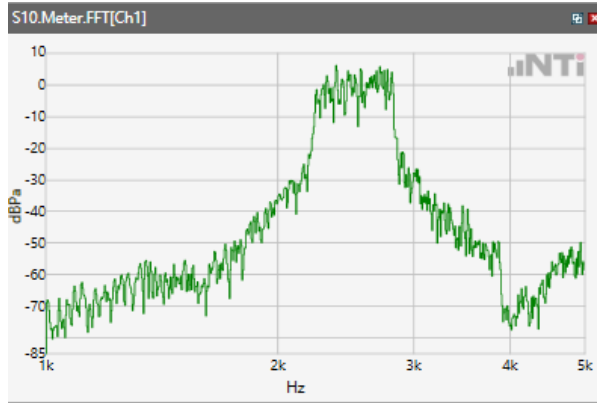
ANSI/TIA 5050-2018 \ 2N HAC ON \ WB 12.65kbps\ 5.2 Receive path – distortion and noise\ LTE Band 66



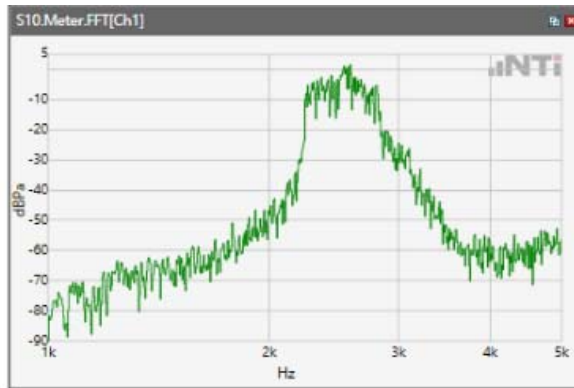
ANSI/TIA 5050-2018 \ 2N HAC ON \ WB 12.65kbps\ 5.2 Receive path – distortion and noise\ LTE Band 71



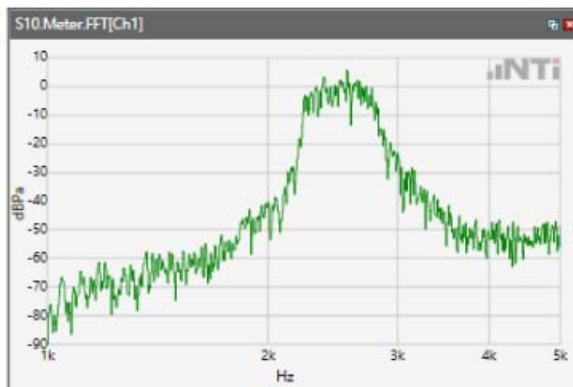
ANSI/TIA 5050-2018 \ 2N HAC ON \ WB 12.65kbps\ 5.2 Receive path – distortion and noise\WLAN 2.4GHz



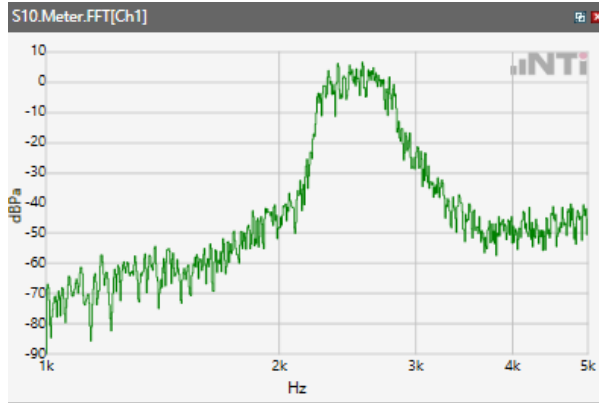
ANSI/TIA 5050-2018 \ 2N HAC ON \ WB 12.65kbps\ 5.2 Receive path – distortion and noise\ WLAN 5.2GHz



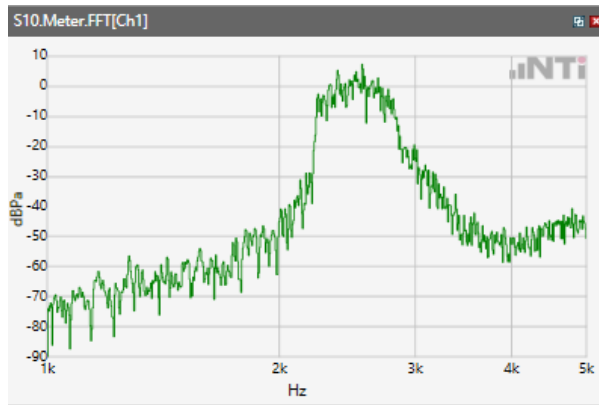
ANSI/TIA 5050-2018 \ 2N HAC ON \ WB 12.65kbps\ 5.2 Receive path – distortion and noise\ WLAN 5.3GHz



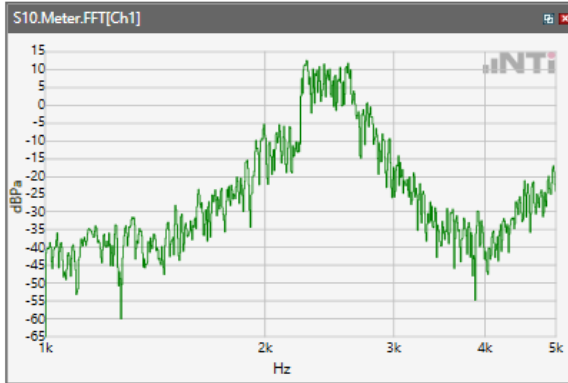
ANSI/TIA 5050-2018 \ 2N HAC ON \ WB 12.65kbps\ 5.2 Receive path – distortion and noise\ WLAN 5.5GHz



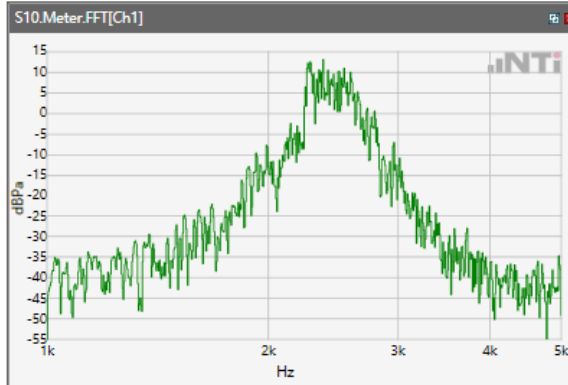
ANSI/TIA 5050-2018 \ 2N HAC ON \ WB 12.65kbps\ 5.2 Receive path – distortion and noise\ WLAN 5.8GHz



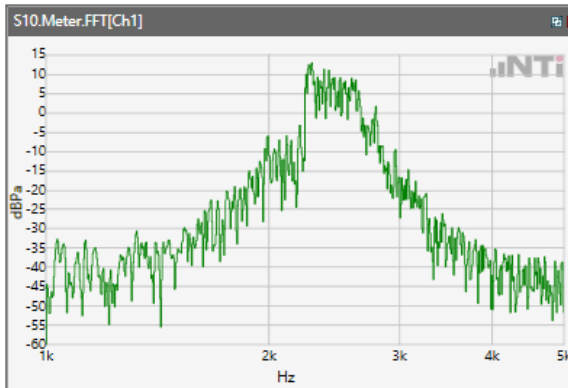
ANSI/TIA 5050-2018 \ 2N HAC ON \ WB 14.25kbps\ 5.2 Receive path – distortion and noise\ WCDMA Band V



ANSI/TIA 5050-2018 \ 2N HAC ON \ WB 14.25kbps\ 5.2 Receive path – distortion and noise\ LTE Band 2

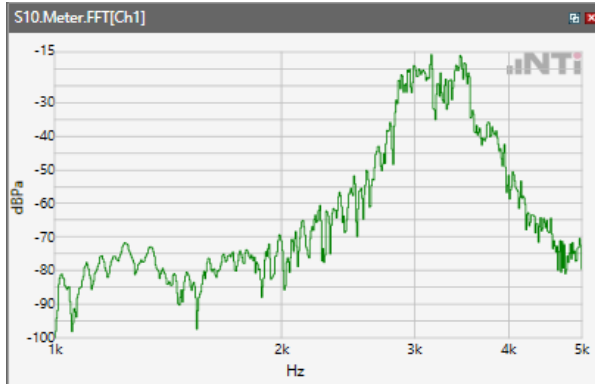


ANSI/TIA 5050-2018 \ 2N HAC ON \ WB 14.25kbps\ 5.2 Receive path – distortion and noise\ LTE Band 41

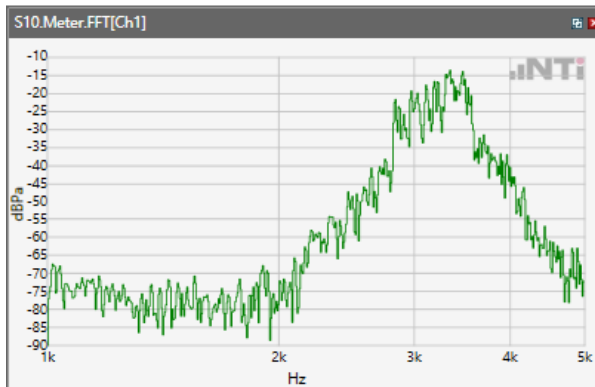


Receive path - distortion and noise 3150Hz WB&NB

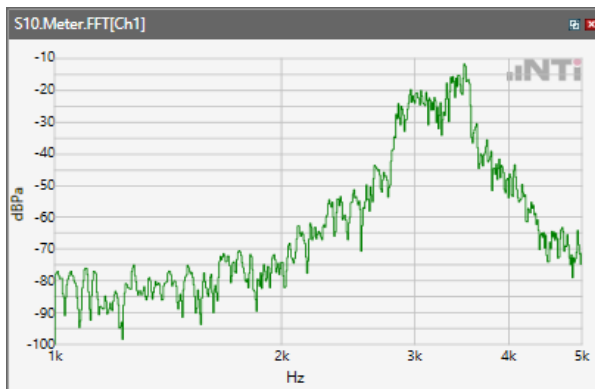
ANSI/TIA 5050-2018 \ 2N HAC ON \ WB 12.65kbps\ 5.2 Receive path – distortion and noise\GSM 850



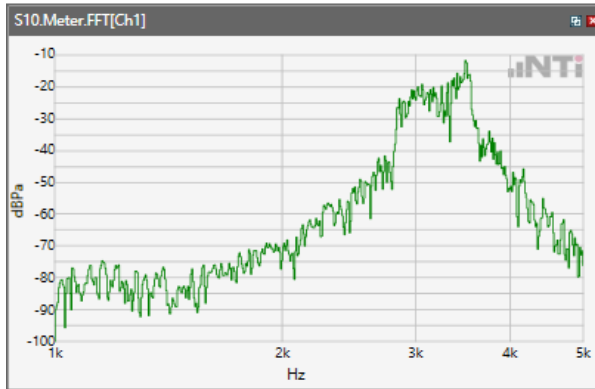
ANSI/TIA 5050-2018 \ 2N HAC ON \ WB 12.65kbps\ 5.2 Receive path – distortion and noise\GSM 1900



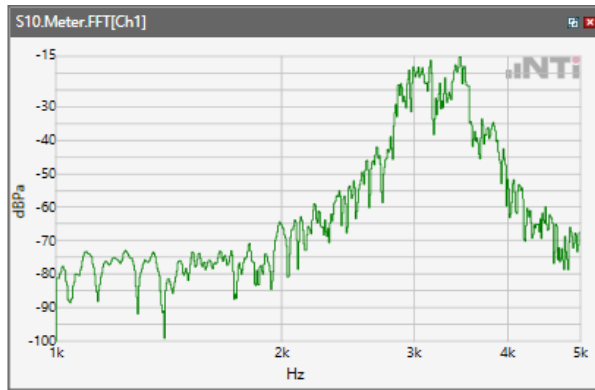
ANSI/TIA 5050-2018 \ 2N HAC ON \ WB 12.65kbps\ 5.2 Receive path – distortion and noise\WCDM Band II



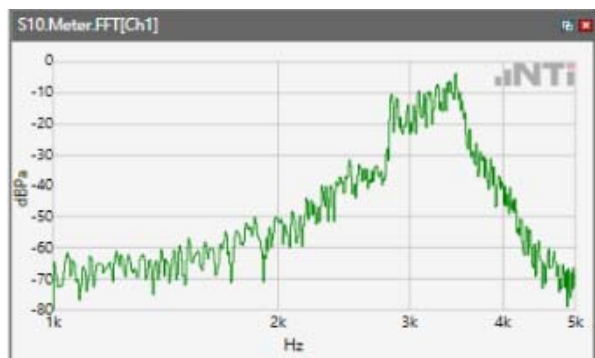
ANSI/TIA 5050-2018 \ 2N HAC ON \ WB 12.65kbps\ 5.2 Receive path – distortion and noise\ WCDM Band IV



ANSI/TIA 5050-2018 \ 2N HAC ON \ WB 12.65kbps\ 5.2 Receive path – distortion and noise\ WCDM Band V



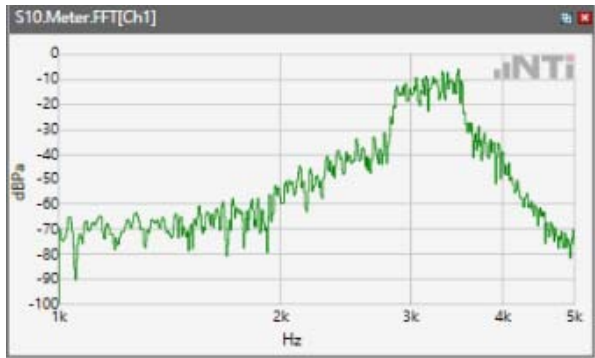
ANSI/TIA 5050-2018 \ 2N HAC ON \ WB 12.65kbps\ 5.2 Receive path – distortion and noise\ LTE Band 2



ANSI/TIA 5050-2018 \ 2N HAC ON \ WB 12.65kbps\ 5.2 Receive path – distortion and noise\ LTE Band 4



ANSI/TIA 5050-2018 \ 2N HAC ON \ WB 12.65kbps\ 5.2 Receive path – distortion and noise\ LTE Band 5



ANSI/TIA 5050-2018 \ 2N HAC ON \ WB 12.65kbps\ 5.2 Receive path – distortion and noise\ LTE Band 12



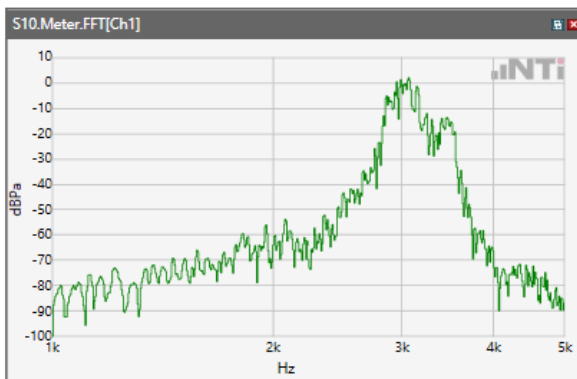
ANSI/TIA 5050-2018 \ 2N HAC ON \ WB 12.65kbps\ 5.2 Receive path – distortion and noise\ LTE Band 17



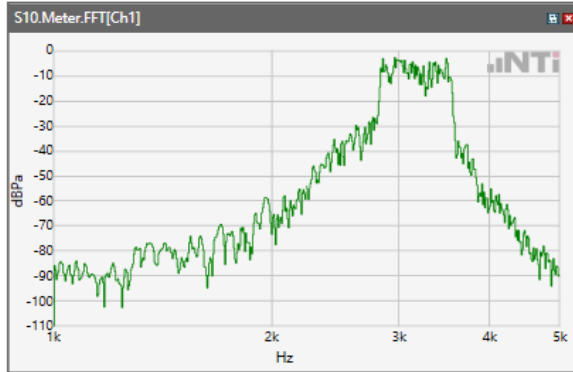
ANSI/TIA 5050-2018 \ 2N HAC ON \ WB 12.65kbps\ 5.2 Receive path – distortion and noise\ LTE Band 25



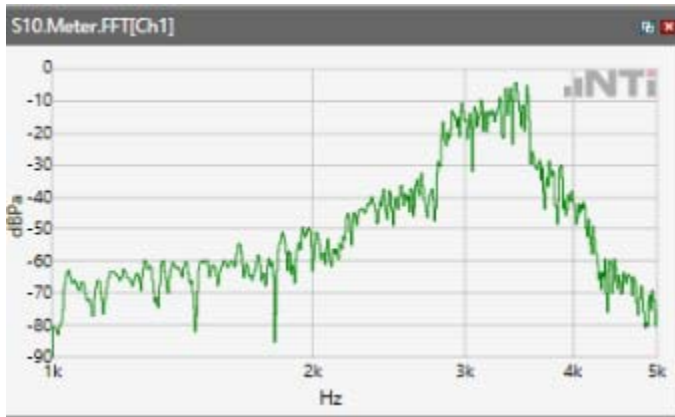
ANSI/TIA 5050-2018 \ 2N HAC ON \ WB 12.65kbps\ 5.2 Receive path – distortion and noise\ LTE Band 26



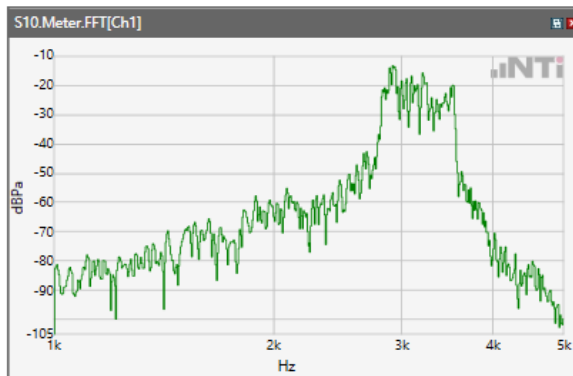
ANSI/TIA 5050-2018 \ 2N HAC ON \ WB 12.65kbps\ 5.2 Receive path – distortion and noise\ LTE Band 41



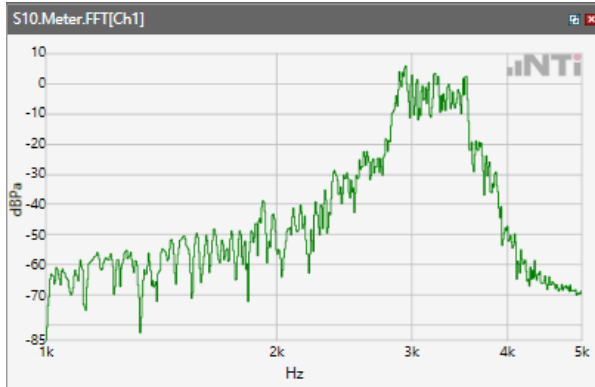
ANSI/TIA 5050-2018 \ 2N HAC ON \ WB 12.65kbps\ 5.2 Receive path – distortion and noise\ LTE Band 66



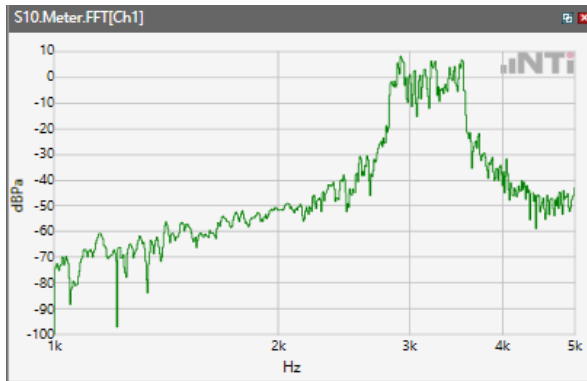
ANSI/TIA 5050-2018 \ 2N HAC ON \ WB 12.65kbps\ 5.2 Receive path – distortion and noise\ LTE Band 71



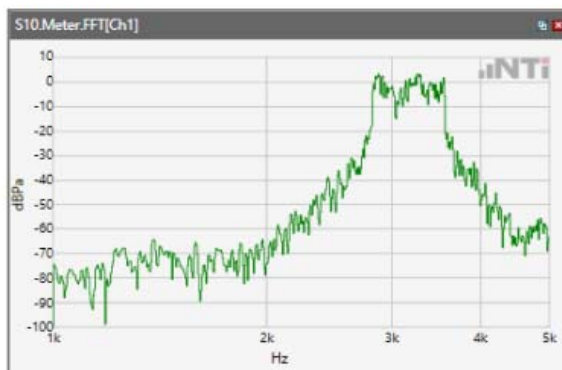
ANSI/TIA 5050-2018 \ 2N HAC ON \ WB 12.65kbps\ 5.2 Receive path – distortion and noise\WLAN 2.4GHz



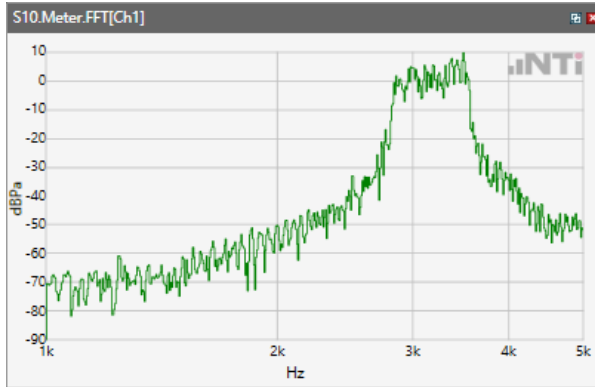
ANSI/TIA 5050-2018 \ 2N HAC ON \ WB 12.65kbps\ 5.2 Receive path – distortion and noise\ WLAN 5.2GHz



ANSI/TIA 5050-2018 \ 2N HAC ON \ WB 12.65kbps\ 5.2 Receive path – distortion and noise\ WLAN 5.3GHz



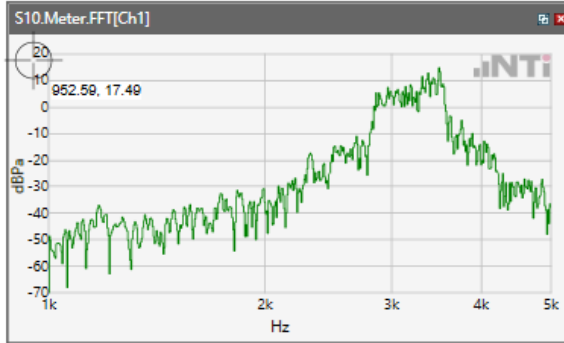
ANSI/TIA 5050-2018 \ 2N HAC ON \ WB 12.65kbps\ 5.2 Receive path – distortion and noise\ WLAN 5.5GHz



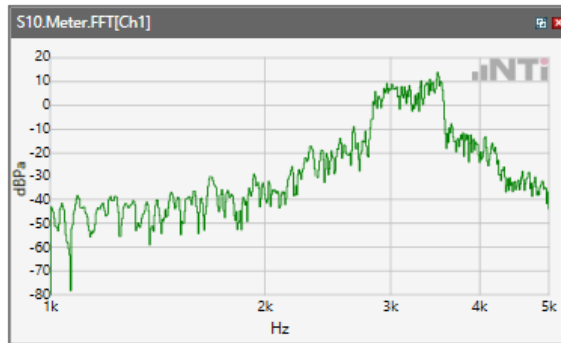
ANSI/TIA 5050-2018 \ 2N HAC ON \ WB 12.65kbps\ 5.2 Receive path – distortion and noise\ WLAN 5.8GHz



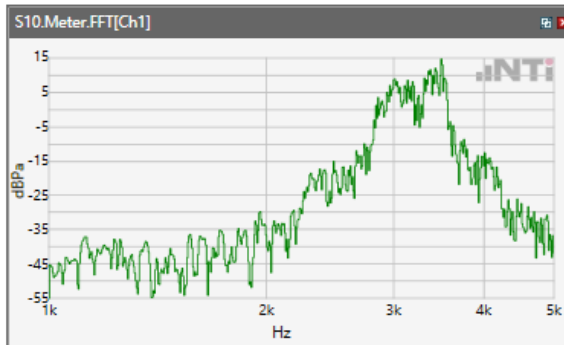
ANSI/TIA 5050-2018 \ 2N HAC ON \ WB 14.25kbps\ 5.2 Receive path – distortion and noise\ WCDMA Band V



ANSI/TIA 5050-2018 \ 2N HAC ON \ WB 14.25kbps\ 5.2 Receive path – distortion and noise\ LTE Band 2

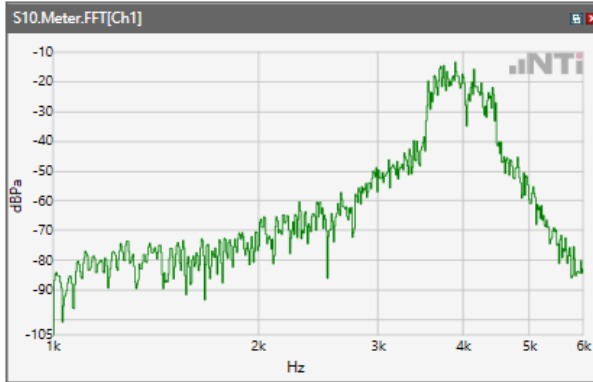


ANSI/TIA 5050-2018 \ 2N HAC ON \ WB 14.25kbps\ 5.2 Receive path – distortion and noise\ LTE Band 41

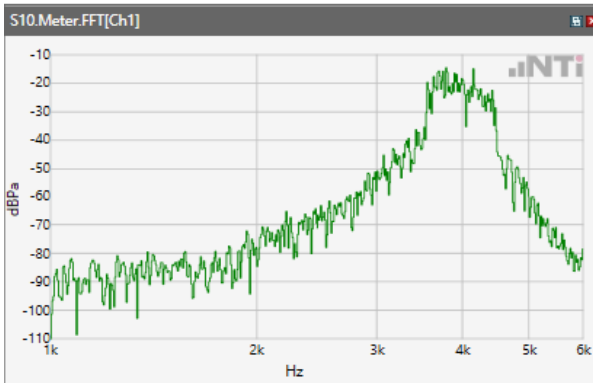


Receive path - distortion and noise 4000Hz WB only

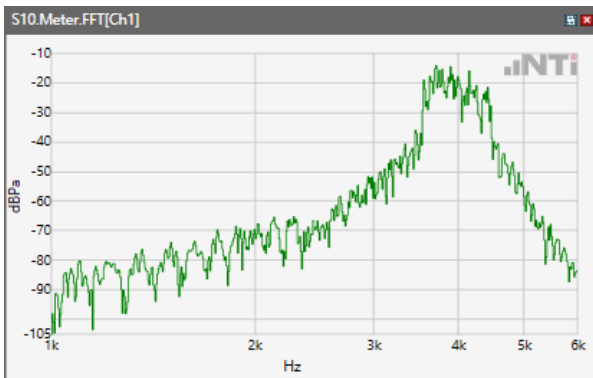
ANSI/TIA 5050-2018 \ 2N HAC ON \ WB 12.65kbps\ 5.2 Receive path – distortion and noise\GSM 850



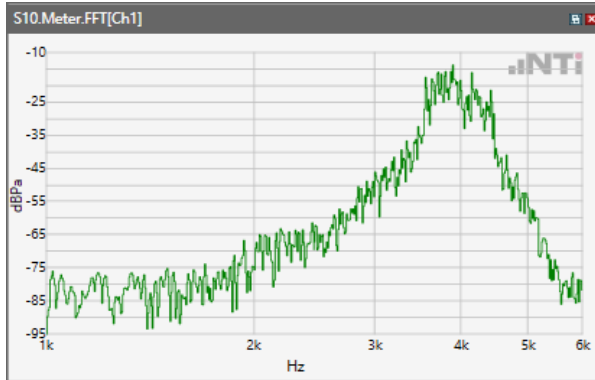
ANSI/TIA 5050-2018 \ 2N HAC ON \ WB 12.65kbps\ 5.2 Receive path – distortion and noise\GSM 1900



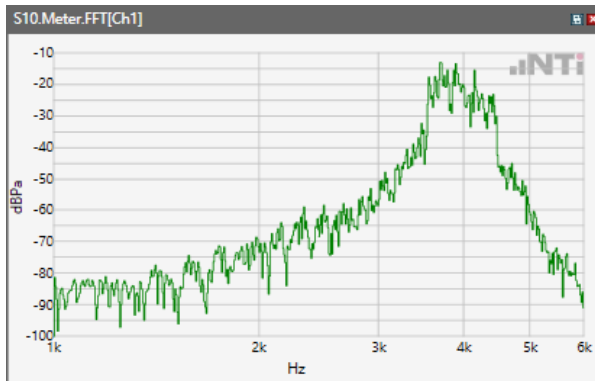
ANSI/TIA 5050-2018 \ 2N HAC ON \ WB 12.65kbps\ 5.2 Receive path – distortion and noise\WCDM Band II



ANSI/TIA 5050-2018 \ 2N HAC ON \ WB 12.65kbps\ 5.2 Receive path – distortion and noise\ WCDM Band IV



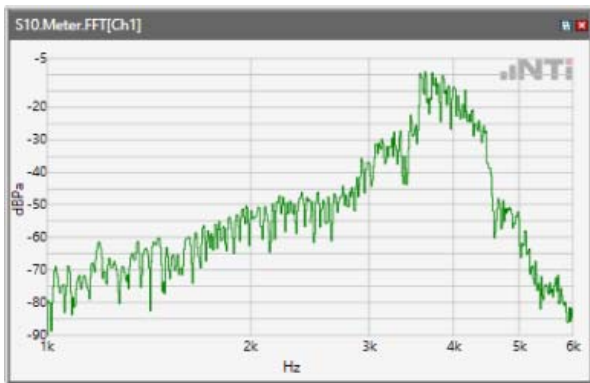
ANSI/TIA 5050-2018 \ 2N HAC ON \ WB 12.65kbps\ 5.2 Receive path – distortion and noise\ WCDM Band V



ANSI/TIA 5050-2018 \ 2N HAC ON \ WB 12.65kbps\ 5.2 Receive path – distortion and noise\ LTE Band 2



ANSI/TIA 5050-2018 \ 2N HAC ON \ WB 12.65kbps\ 5.2 Receive path – distortion and noise\ LTE Band 4



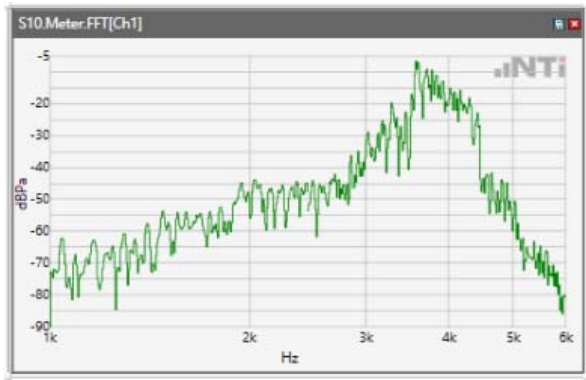
ANSI/TIA 5050-2018 \ 2N HAC ON \ WB 12.65kbps\ 5.2 Receive path – distortion and noise\ LTE Band 5



ANSI/TIA 5050-2018 \ 2N HAC ON \ WB 12.65kbps\ 5.2 Receive path – distortion and noise\ LTE Band 12



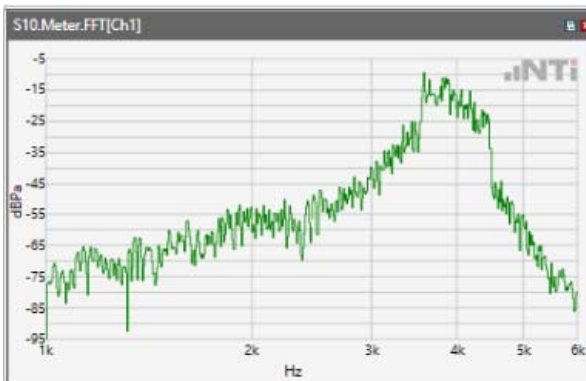
ANSI/TIA 5050-2018 \ 2N HAC ON \ WB 12.65kbps\ 5.2 Receive path – distortion and noise\ LTE Band 17



ANSI/TIA 5050-2018 \ 2N HAC ON \ WB 12.65kbps\ 5.2 Receive path – distortion and noise\ LTE Band 25



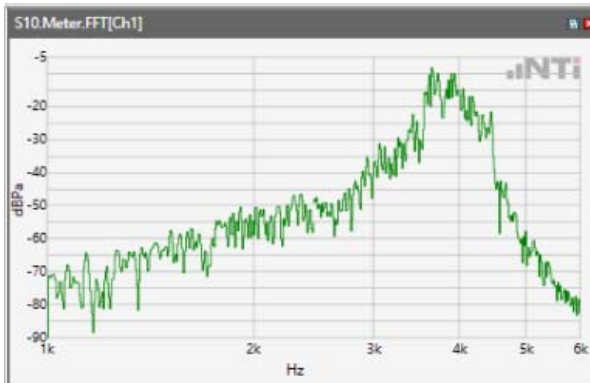
ANSI/TIA 5050-2018 \ 2N HAC ON \ WB 12.65kbps\ 5.2 Receive path – distortion and noise\ LTE Band 26



ANSI/TIA 5050-2018 \ 2N HAC ON \ WB 12.65kbps\ 5.2 Receive path – distortion and noise\ LTE Band 41



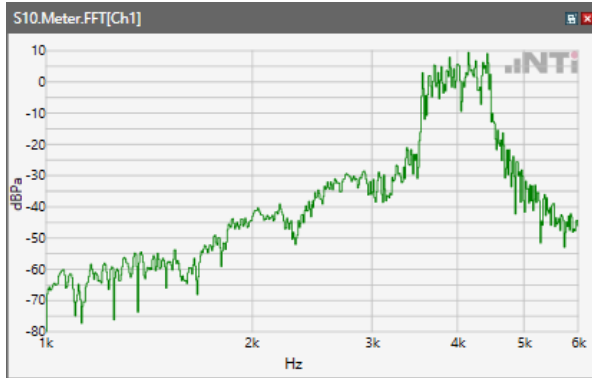
ANSI/TIA 5050-2018 \ 2N HAC ON \ WB 12.65kbps\ 5.2 Receive path – distortion and noise\ LTE Band 66



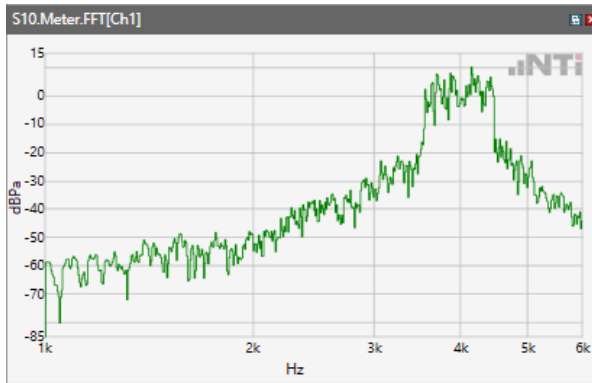
ANSI/TIA 5050-2018 \ 2N HAC ON \ WB 12.65kbps\ 5.2 Receive path – distortion and noise\ LTE Band 71



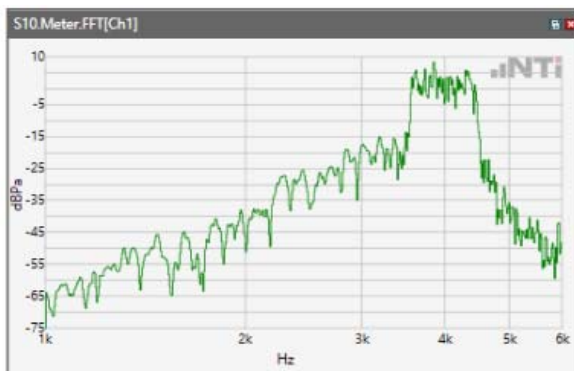
ANSI/TIA 5050-2018 \ 2N HAC ON \ WB 12.65kbps\ 5.2 Receive path – distortion and noise\WLAN 2.4GHz



ANSI/TIA 5050-2018 \ 2N HAC ON \ WB 12.65kbps\ 5.2 Receive path – distortion and noise\ WLAN 5.2GHz



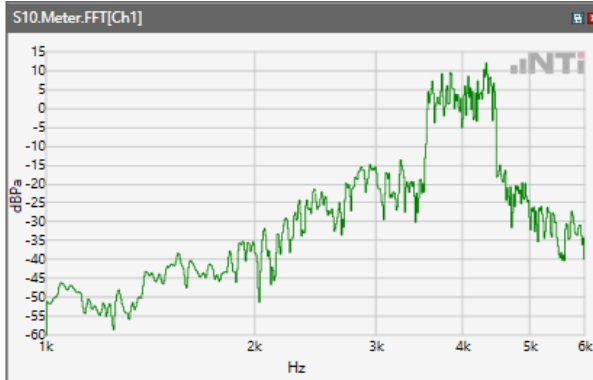
ANSI/TIA 5050-2018 \ 2N HAC ON \ WB 12.65kbps\ 5.2 Receive path – distortion and noise\ WLAN 5.3GHz



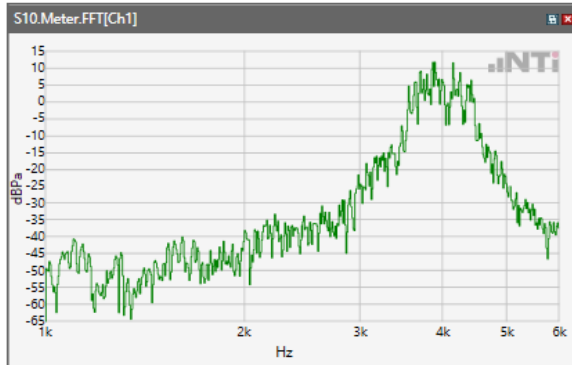
ANSI/TIA 5050-2018 \ 2N HAC ON \ WB 12.65kbps\ 5.2 Receive path – distortion and noise\ WLAN 5.5GHz



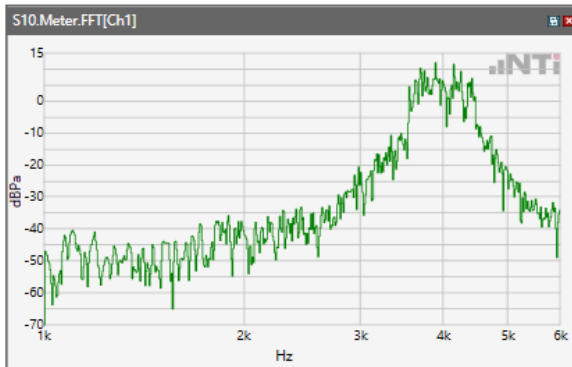
ANSI/TIA 5050-2018 \ 2N HAC ON \ WB 12.65kbps\ 5.2 Receive path – distortion and noise\ WLAN 5.8GHz



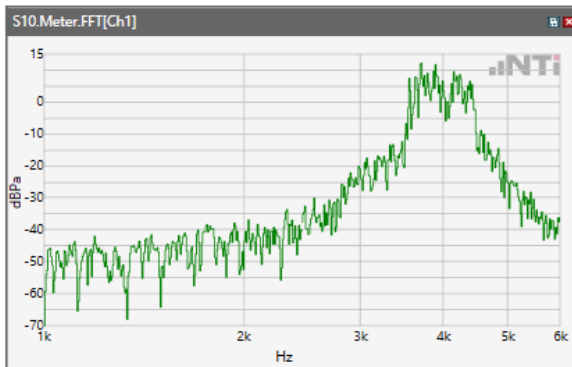
ANSI/TIA 5050-2018 \ 2N HAC ON \ WB 14.25kbps\ 5.2 Receive path – distortion and noise\ WCDMA Band V



ANSI/TIA 5050-2018 \ 2N HAC ON \ WB 14.25kbps\ 5.2 Receive path – distortion and noise\ LTE Band 2

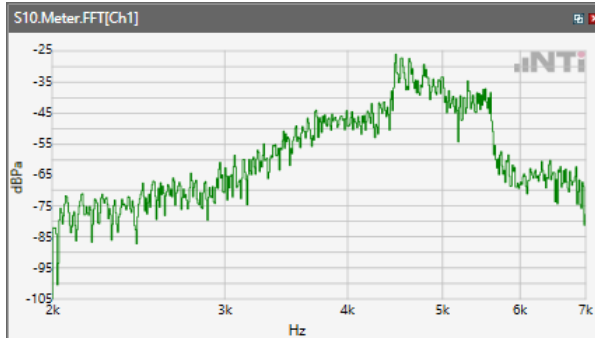


ANSI/TIA 5050-2018 \ 2N HAC ON \ WB 14.25kbps\ 5.2 Receive path – distortion and noise\ LTE Band 41

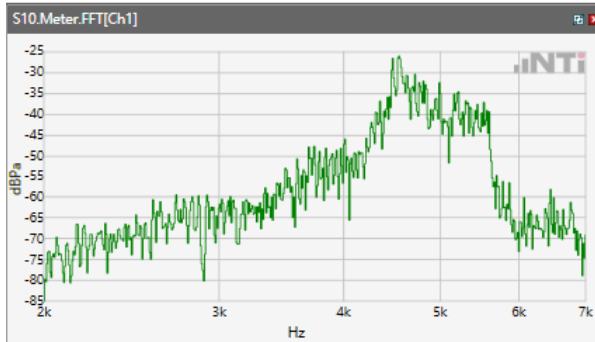


Receive path - distortion and noise 5000Hz WB only

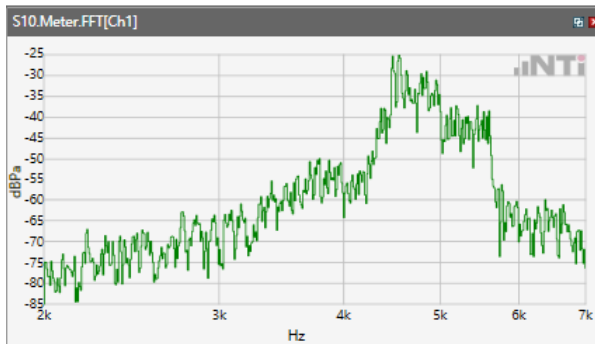
ANSI/TIA 5050-2018 \ 2N HAC ON \ WB 12.65kbps\ 5.2 Receive path – distortion and noise\GSM 850



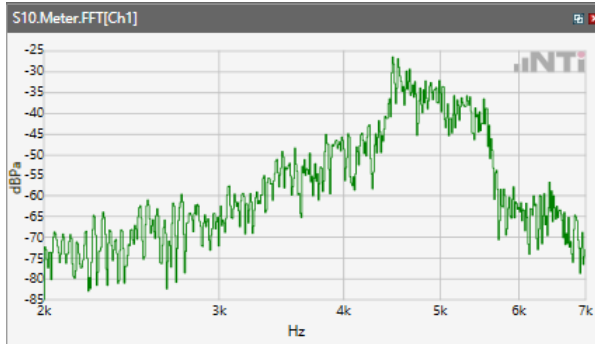
ANSI/TIA 5050-2018 \ 2N HAC ON \ WB 12.65kbps\ 5.2 Receive path – distortion and noise\GSM 1900



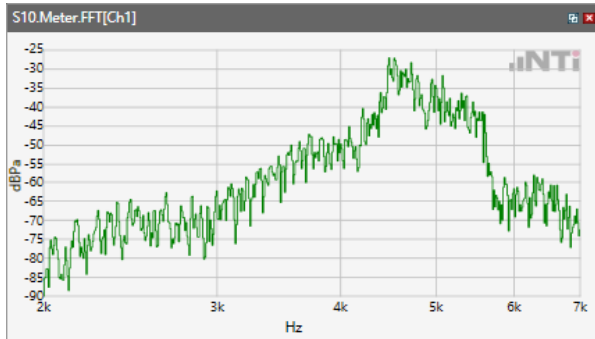
ANSI/TIA 5050-2018 \ 2N HAC ON \ WB 12.65kbps\ 5.2 Receive path – distortion and noise\WCDM Band II



ANSI/TIA 5050-2018 \ 2N HAC ON \ WB 12.65kbps\ 5.2 Receive path – distortion and noise\ WCDM Band IV



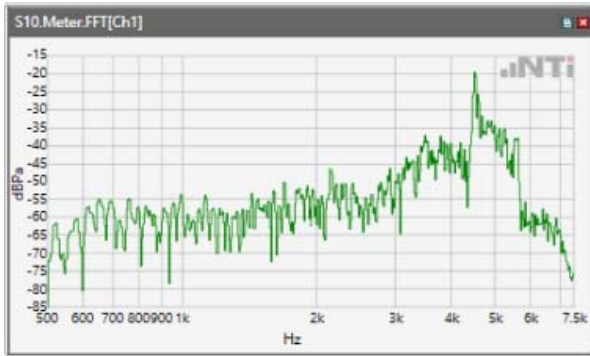
ANSI/TIA 5050-2018 \ 2N HAC ON \ WB 12.65kbps\ 5.2 Receive path – distortion and noise\ WCDM Band V



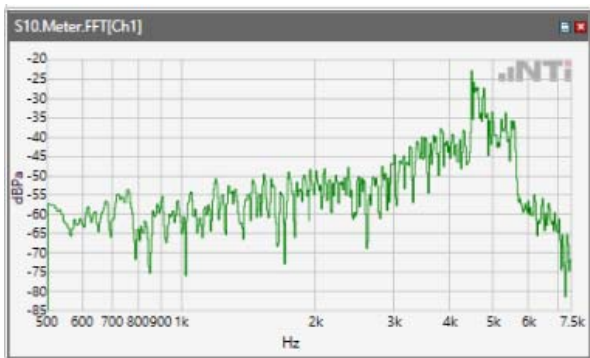
ANSI/TIA 5050-2018 \ 2N HAC ON \ WB 12.65kbps\ 5.2 Receive path – distortion and noise\ LTE Band 2



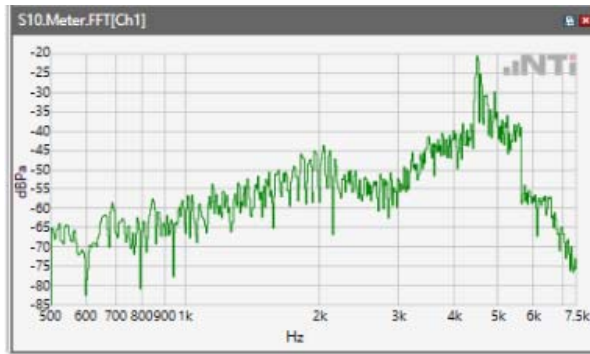
ANSI/TIA 5050-2018 \ 2N HAC ON \ WB 12.65kbps\ 5.2 Receive path – distortion and noise\ LTE Band 4



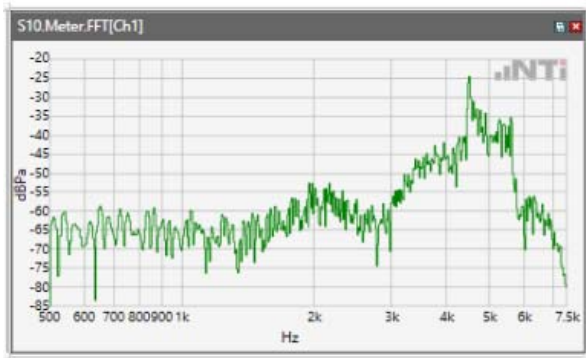
ANSI/TIA 5050-2018 \ 2N HAC ON \ WB 12.65kbps\ 5.2 Receive path – distortion and noise\ LTE Band 5



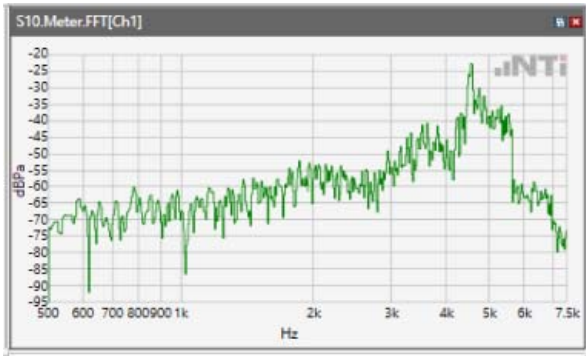
ANSI/TIA 5050-2018 \ 2N HAC ON \ WB 12.65kbps\ 5.2 Receive path – distortion and noise\ LTE Band 12



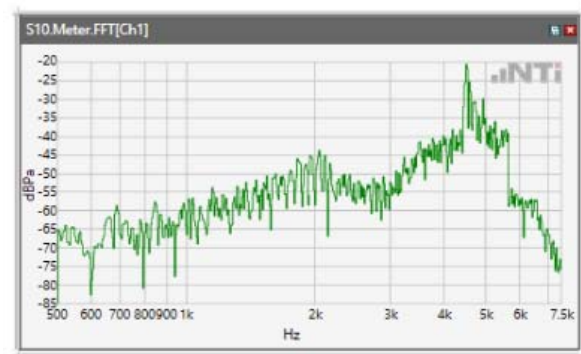
ANSI/TIA 5050-2018 \ 2N HAC ON \ WB 12.65kbps\ 5.2 Receive path – distortion and noise\ LTE Band 17



ANSI/TIA 5050-2018 \ 2N HAC ON \ WB 12.65kbps\ 5.2 Receive path – distortion and noise\ LTE Band 25



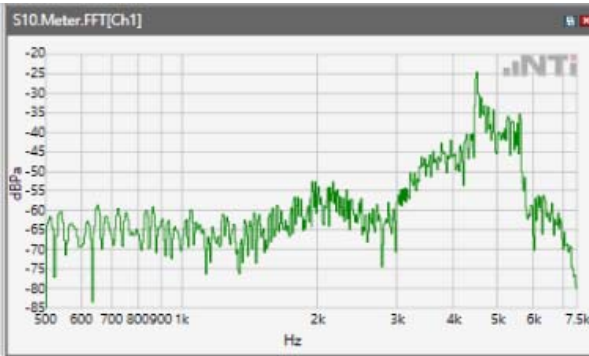
ANSI/TIA 5050-2018 \ 2N HAC ON \ WB 12.65kbps\ 5.2 Receive path – distortion and noise\ LTE Band 26



ANSI/TIA 5050-2018 \ 2N HAC ON \ WB 12.65kbps\ 5.2 Receive path – distortion and noise\ LTE Band 41



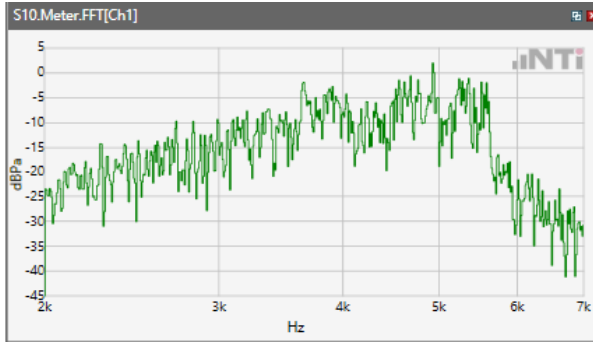
ANSI/TIA 5050-2018 \ 2N HAC ON \ WB 12.65kbps\ 5.2 Receive path – distortion and noise\ LTE Band 66



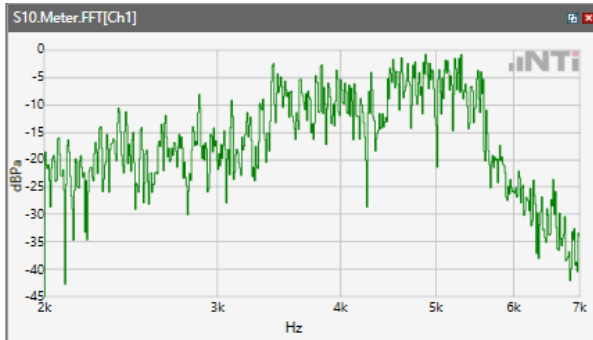
ANSI/TIA 5050-2018 \ 2N HAC ON \ WB 12.65kbps\ 5.2 Receive path – distortion and noise\ LTE Band 71



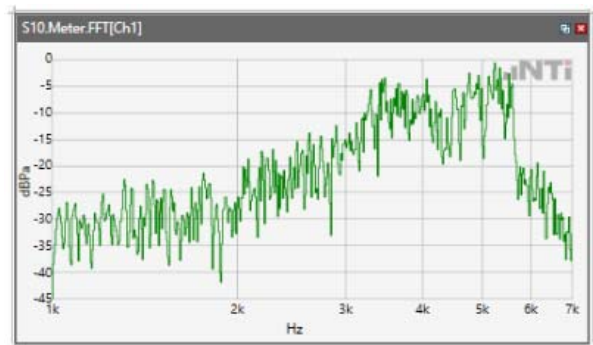
ANSI/TIA 5050-2018 \ 2N HAC ON \ WB 12.65kbps\ 5.2 Receive path – distortion and noise\WLAN
2.4GHz



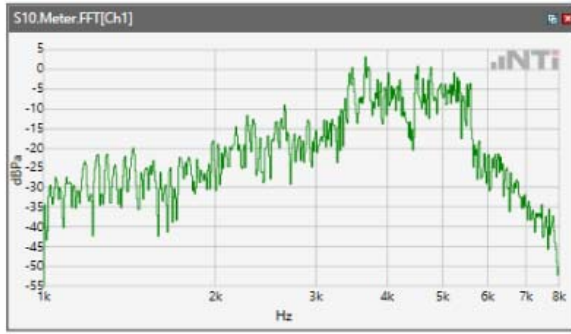
ANSI/TIA 5050-2018 \ 2N HAC ON \ WB 12.65kbps\ 5.2 Receive path – distortion and noise\ WLAN
5.2GHz



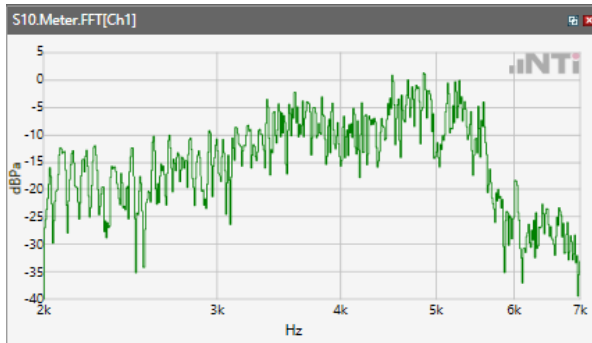
ANSI/TIA 5050-2018 \ 2N HAC ON \ WB 12.65kbps\ 5.2 Receive path – distortion and noise\ WLAN
5.3GHz



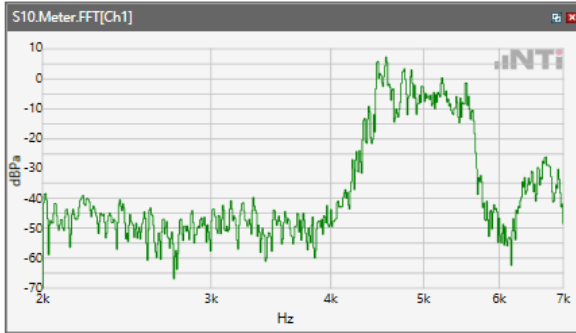
ANSI/TIA 5050-2018 \ 2N HAC ON \ WB 12.65kbps\ 5.2 Receive path – distortion and noise\ WLAN 5.5GHz



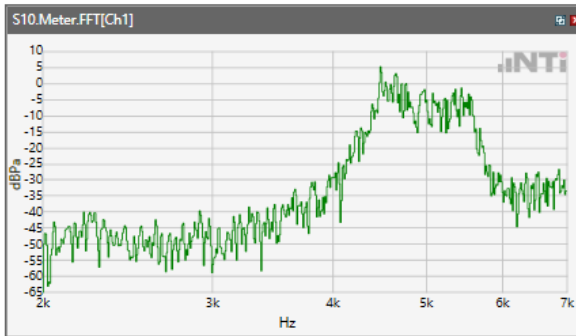
ANSI/TIA 5050-2018 \ 2N HAC ON \ WB 12.65kbps\ 5.2 Receive path – distortion and noise\ WLAN 5.8GHz



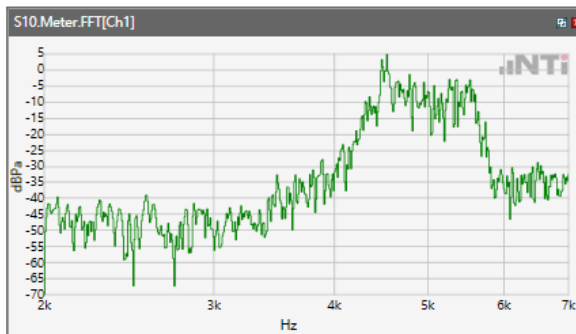
ANSI/TIA 5050-2018 \ 2N HAC ON \ WB 14.25kbps\ 5.2 Receive path – distortion and noise\ WCDMA Band V



ANSI/TIA 5050-2018 \ 2N HAC ON \ WB 14.25kbps\ 5.2 Receive path – distortion and noise\ LTE Band 2



ANSI/TIA 5050-2018 \ 2N HAC ON \ WB 14.25kbps\ 5.2 Receive path – distortion and noise\ LTE Band 41

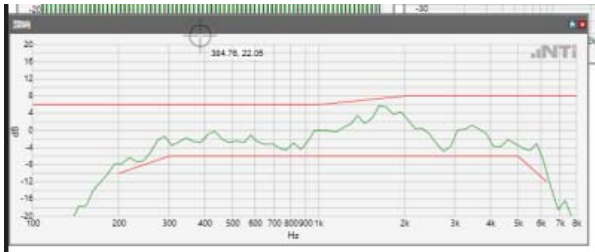


5.2 Receive path – distortion and noise

The distortion and noise test results data are referred to Annex C.

5.3 Receive Acoustic Frequency response Performance

ANSI/TIA 5050-2018 \ 2N HAC ON \ WB 12.65kbps \GSM 850



Absolute minimal distance

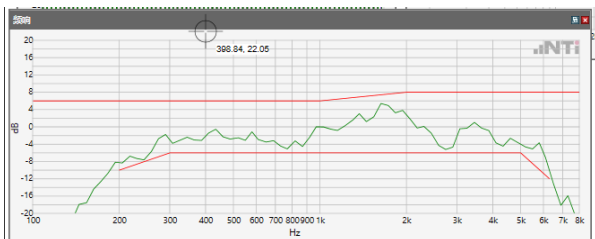
OK

OK

Limits

	lower
Run 1	Fit into tolerance

ANSI/TIA 5050-2018 \ 2N HAC ON \ WB 12.65kbps \GSM 1900



Absolute minimal distance

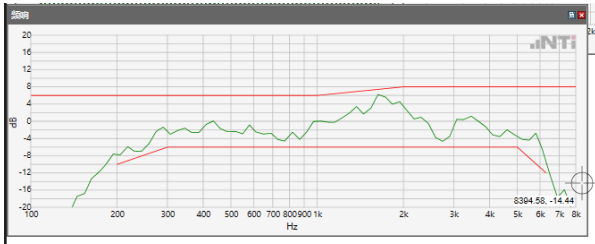
OK

OK

Limits

	lower
Run 1	Fit into tolerance

ANSI/TIA 5050-2018 \ 2N HAC ON \ WB 12.65kbps \ WCDMA Band II



Absolute minimal distance

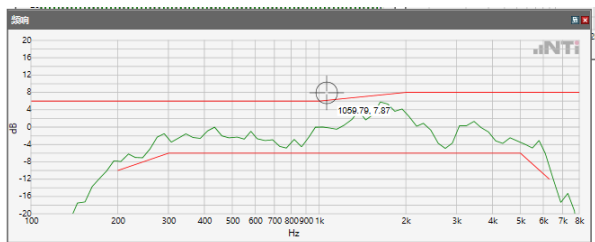
OK

OK

Limits

	lower
Run 1	Fit into tolerance

ANSI/TIA 5050-2018 \ 2N HAC ON \ WB 12.65kbps \ WCDMA Band IV



Absolute minimal distance

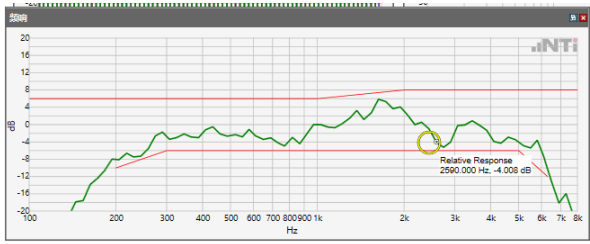
OK

OK

Limits

	lower
Run 1	Fit into tolerance

ANSI/TIA 5050-2018 \ 2N HAC ON \ WB 12.65kbps \ WCDMA Band V



Absolute minimal distance

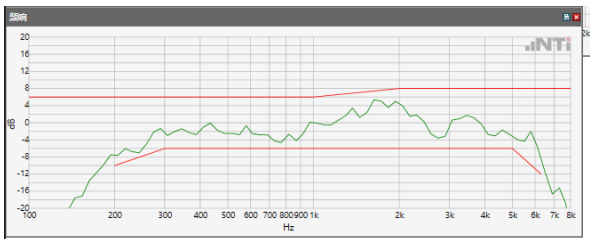
OK

OK

Limits

	lower
Run 1	Fit into tolerance

ANSI/TIA 5050-2018 \ 2N HAC ON \ WB 12.65kbps \ LTE Band 2



Absolute minimal distance

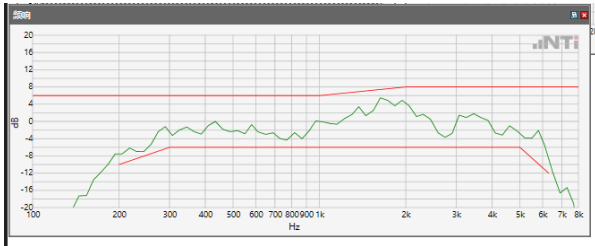
OK

OK

Limits

	lower
Run 1	Fit into tolerance

ANSI/TIA 5050-2018 \ 2N HAC ON \ WB 12.65kbps \ LTE Band 4



Absolute minimal distance

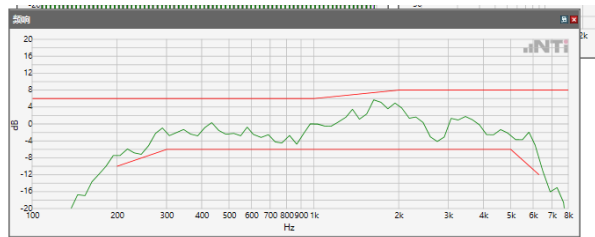
OK

OK

Limits

	lower
Run 1	Fit into tolerance

ANSI/TIA 5050-2018 \ 2N HAC ON \ WB 12.65kbps \ LTE Band 5



Absolute minimal distance

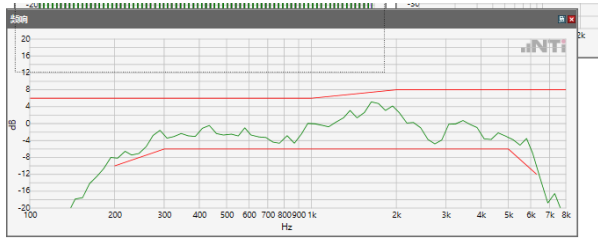
OK

OK

Limits

	lower
Run 1	Fit into tolerance

ANSI/TIA 5050-2018 \ 2N HAC ON \ WB 12.65kbps \ LTE Band 12



Absolute minimal distance

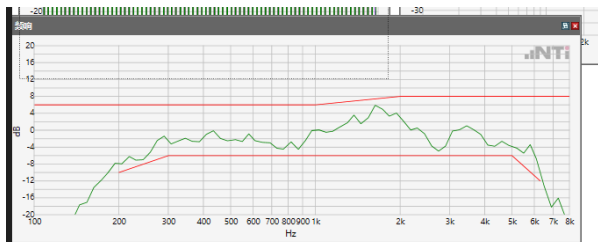
OK

OK

Limits

	lower
Run 1	Fit into tolerance

ANSI/TIA 5050-2018 \ 2N HAC ON \ WB 12.65kbps \ LTE Band 17



Absolute minimal distance

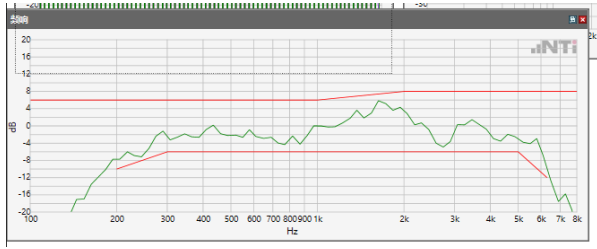
OK

OK

Limits

	lower
Run 1	Fit into tolerance

ANSI/TIA 5050-2018 \ 2N HAC ON \ WB 12.65kbps \ LTE Band 25



Absolute minimal distance

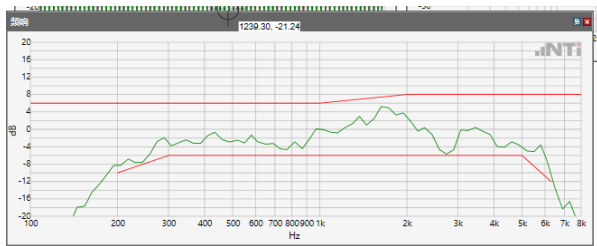
OK

OK

Limits

	lower
Run 1	Fit into tolerance

ANSI/TIA 5050-2018 \ 2N HAC ON \ WB 12.65kbps \ LTE Band 26



Absolute minimal distance

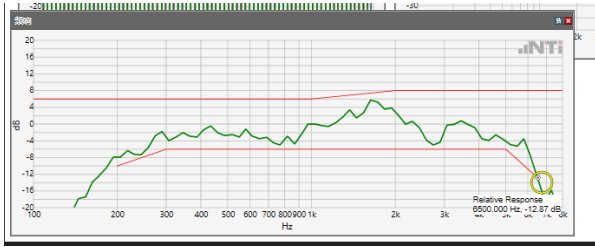
OK

OK

Limits

	lower
Run 1	Fit into tolerance

ANSI/TIA 5050-2018 \ 2N HAC ON \ WB 12.65kbps \ LTE Band 41



Absolute minimal distance

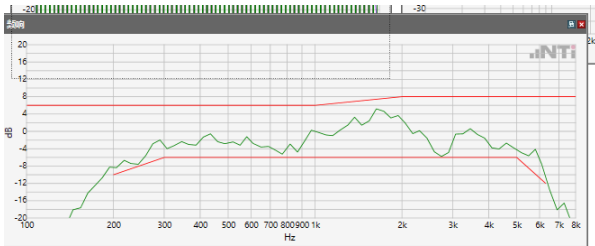
OK

OK

Limits

	lower
Run 1	Fit into tolerance

ANSI/TIA 5050-2018 \ 2N HAC ON \ WB 12.65kbps \ LTE Band 66



Absolute minimal distance

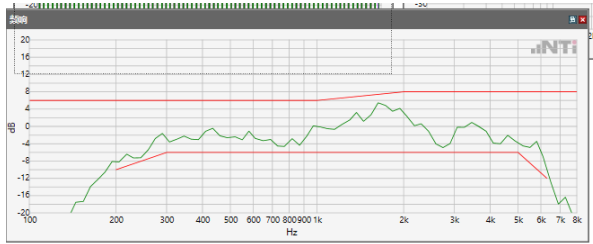
OK

OK

Limits

	lower
Run 1	Fit into tolerance

ANSI/TIA 5050-2018 \ 2N HAC ON \ WB 12.65kbps \ LTE Band 71



Absolute minimal distance

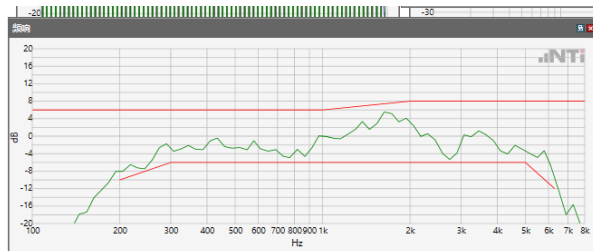
OK

OK

Limits

	lower
Run 1	Fit into tolerance

ANSI/TIA 5050-2018 \ 2N HAC ON \ WB 12.65kbps \ WLAN 2.4GHz



Absolute minimal distance

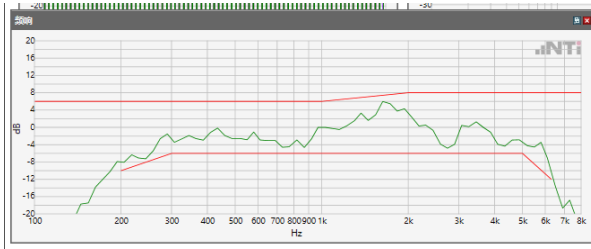
OK

OK

Limits

	lower
Run 1	Fit into tolerance

ANSI/TIA 5050-2018 \ 2N HAC ON \ WB 12.65kbps \ WLAN 5.2GHz



Absolute minimal distance

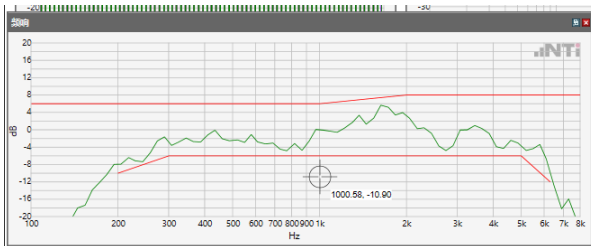
OK

OK

Limits

	lower
Run 1	Fit into tolerance

ANSI/TIA 5050-2018 \ 2N HAC ON \ WB 12.65kbps \ WLAN 5.3GHz



Absolute minimal distance

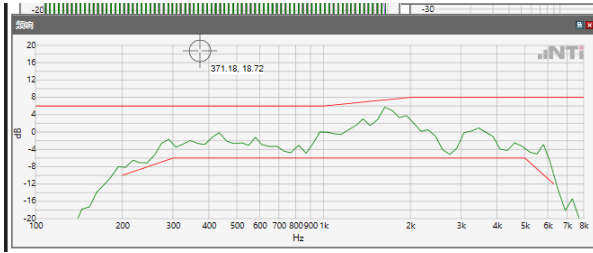
OK

OK

Limits

	lower
Run 1	Fit into tolerance

ANSI/TIA 5050-2018 \ 2N HAC ON \ WB 12.65kbps \ WLAN 5.5GHz



Absolute minimal distance

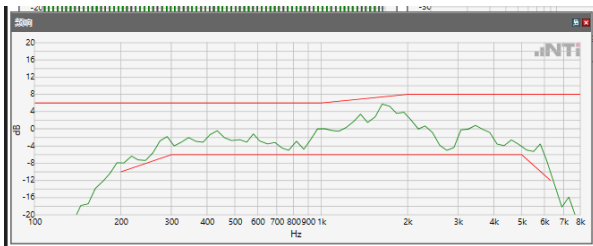
OK

OK

Limits

	lower
Run 1	Fit into tolerance

ANSI/TIA 5050-2018 \ 2N HAC ON \ WB 12.65kbps \ WLAN 5.8GHz



Absolute minimal distance

OK

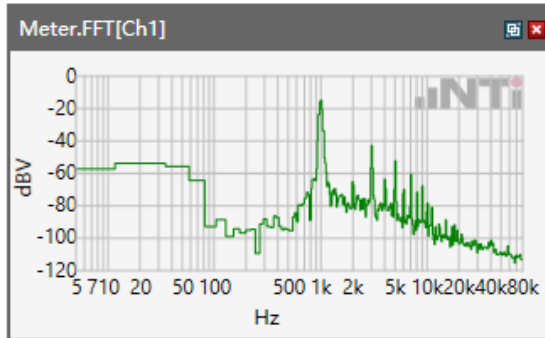
OK

Limits

	lower
Run 1	Fit into tolerance

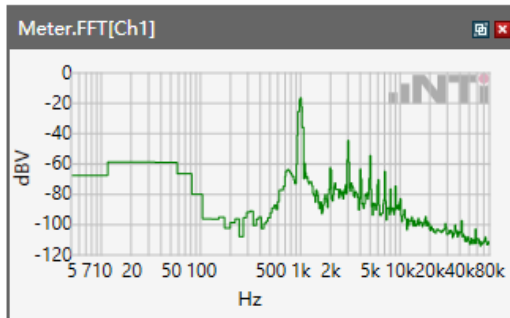
5.1 Receive Volume Control Performance 2N---EVS NB

ANSI/TIA 5050-2018 \ 2N HAC ON \ EVS NB 13.2 kbps\LTE Band 2



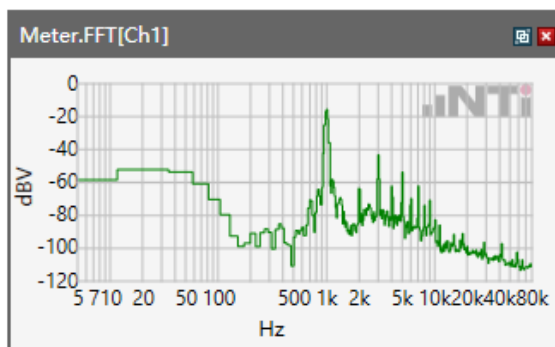
Speech Level RCV: 93.16 dB[SPL]

ANSI/TIA 5050-2018 \ 2N HAC ON \ EVS NB 13.2 kbps\ LTE Band 4



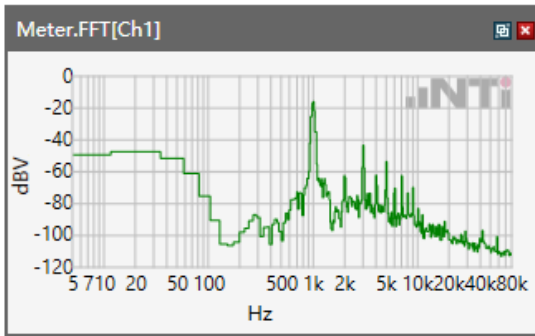
Speech Level RCV: 92.96 dB[SPL]

ANSI/TIA 5050-2018 \ 2N HAC ON \ EVS NB 13.2 kbps\LTE Band 5



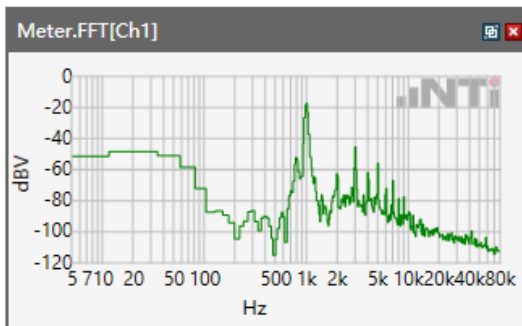
Speech Level RCV: 93.86 dB[SPL]

ANSI/TIA 5050-2018 \ 2N HAC ON \ EVS NB 13.2 kbps\LTE Band 12



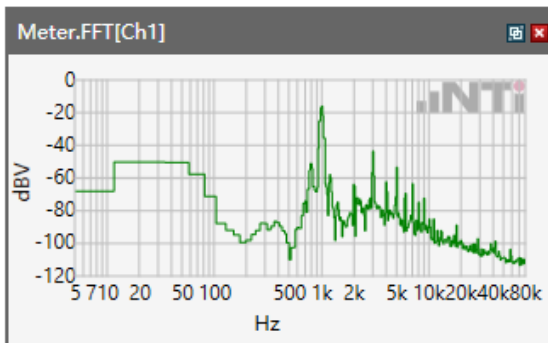
Speech Level RCV: 93.26 dB[SPL]

ANSI/TIA 5050-2018 \ 2N HAC ON \ EVS NB 13.2 kbps\ LTE Band 17



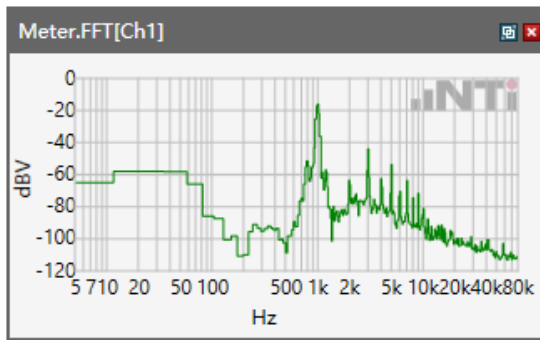
Speech Level RCV: 90.68 dB[SPL]

ANSI/TIA 5050-2018 \ 2N HAC ON \ EVS NB 13.2 kbps\LTE Band 25



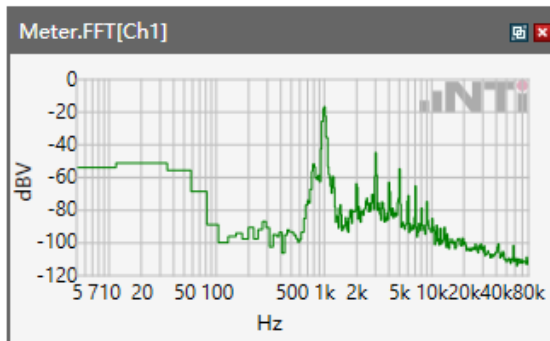
Speech Level RCV: 93.18 dB[SPL]

ANSI/TIA 5050-2018 \ 2N HAC ON \ EVS NB 13.2 kbps\ LTE Band 26



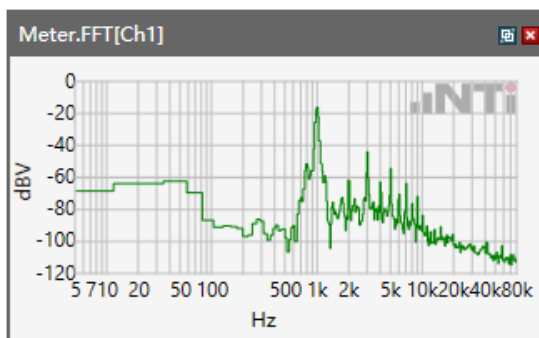
Speech Level RCV: 92.78 dB[SPL]

ANSI/TIA 5050-2018 \ 2N HAC ON \ EVS NB 13.2 kbps\ LTE Band 41



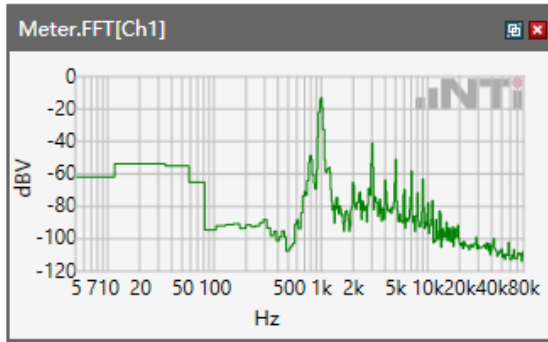
Speech Level RCV: 93.08 dB[SPL]

ANSI/TIA 5050-2018 \ 2N HAC ON \ EVS NB 13.2 kbps\ LTE Band 66



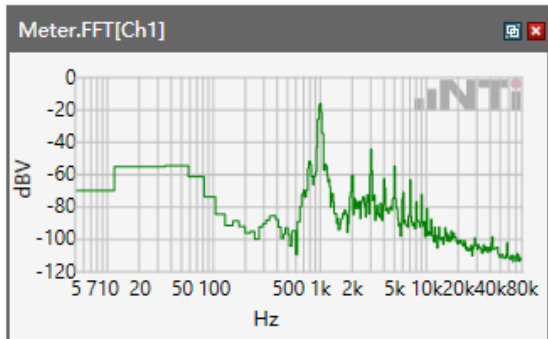
Speech Level RCV: 94.08 dB[SPL]

ANSI/TIA 5050-2018 \ 2N HAC ON \ EVS NB 13.2 kbps\LTE Band 71



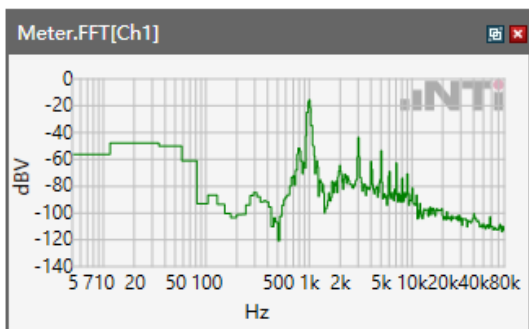
Speech Level RCV: 92.68 dB[SPL]

ANSI/TIA 5050-2018 \ 2N HAC ON \ EVS NB 13.2 kbps\WLAN 2.4GHz



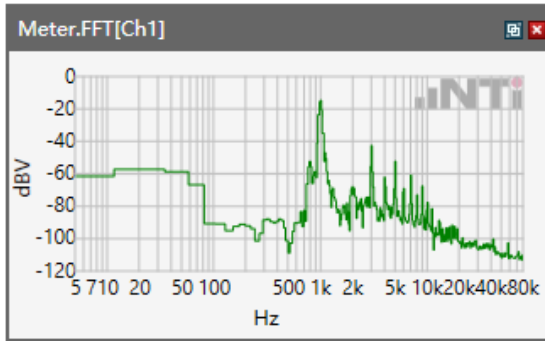
Speech Level RCV: 91.29 dB[SPL]

ANSI/TIA 5050-2018 \ 2N HAC ON \ EVS NB 13.2 kbps\WLAN 5.2GHz



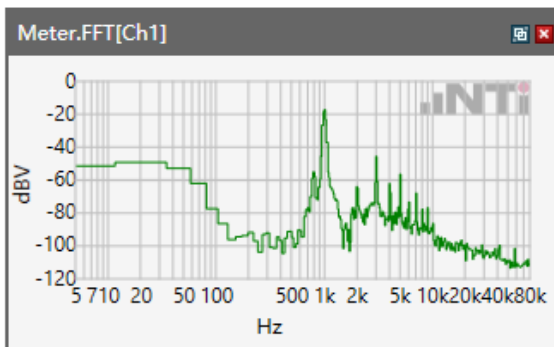
Speech Level RCV: 88.67 dB[SPL]

ANSI/TIA 5050-2018 \ 2N HAC ON \ EVS NB 13.2 kbps\WLAN 5.3 GHz



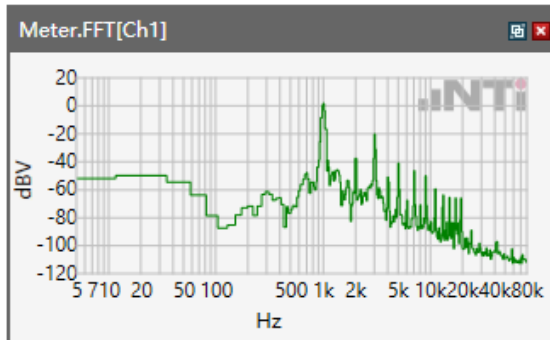
Speech Level RCV: 91.21 dB[SPL]

ANSI/TIA 5050-2018 \ 2N HAC ON \ EVS NB 13.2 kbps\WLAN 5.5 GHz



Speech Level RCV: 86.85 dB[SPL]

ANSI/TIA 5050-2018 \ 2N HAC ON \ EVS NB 13.2 kbps\WLAN 5.8 GHz



Speech Level RCV: 92.54 dB[SPL]

5.1.1 -1 Conversation Gain 2N

ANSI/TIA 5050-2018 \ 2N HAC ON \ EVS NB 13.2 kbps\LTE Band 2

Correction

rcv_vol_wb	93.16 dB[SPL]	2024.3.31	Measured	5.1 Receive Volume Control Performance 2N
------------	---------------	-----------	----------	---

rcv_vol_wb-70

Calculated Value: 23.16 dB OK

Ok

Limits

	lower
Run 1	6.00 dB

ANSI/TIA 5050-2018 \ 2N HAC ON \ EVS NB 13.2 kbps\ LTE Band 4

Correction

rcv_vol_wb	92.96 dB[SPL]	2024.3.31	Measured	5.1 Receive Volume Control Performance 2N
------------	---------------	-----------	----------	---

rcv_vol_wb-70

Calculated Value: 22.96 dB OK

Ok

Limits

	lower
Run 1	6.00 dB

ANSI/TIA 5050-2018 \ 2N HAC ON \ EVS NB 13.2 kbps\ LTE Band 5

Correction

rcv_vol_wb	93.26 dB[SPL]	2024.3.31	Measured	5.1 Receive Volume Control Performance 2N
------------	---------------	-----------	----------	---

rcv_vol_wb-70

Calculated Value: 23.26 dB OK

Ok

Limits

	lower
Run 1	6.00 dB

ANSI/TIA 5050-2018 \ 2N HAC ON \ EVS NB 13.2 kbps\ LTE Band 12

Correction

rcv_vol_wb	93.26 dB[SPL]	2024.3.31	Measured	5.1 Receive Volume Control Performance 2N
------------	---------------	-----------	----------	---

rcv_vol_wb-70

Calculated Value: 23.26 dB OK

Ok

Limits

	lower
Run 1	6.00 dB

ANSI/TIA 5050-2018 \ 2N HAC ON \ EVS NB 13.2 kbps\LTE Band 17

Correction

rcv_vol_wb	93.88 dB[SPL]	2024.3.31	Measured	5.1 Receive Volume Control Performance 2N
------------	---------------	-----------	----------	---

rcv_vol_wb-70

Calculated Value: 23.88 dB OK

Ok**Limits**

	lower
Run 1	6.00 dB

ANSI/TIA 5050-2018 \ 2N HAC ON \ EVS NB 13.2 kbps\LTE Band 25

Correction

rcv_vol_wb	93.18 dB[SPL]	2024.3.31	Measured	5.1 Receive Volume Control Performance 2N
------------	---------------	-----------	----------	---

rcv_vol_wb-70

Calculated Value: 23.18 dB OK

Ok**Limits**

	lower
Run 1	6.00 dB

ANSI/TIA 5050-2018 \ 2N HAC ON \ EVS NB 13.2 kbps\LTE Band 26

Correction

rcv_vol_wb	92.78 dB[SPL]	2024.3.31	Measured	5.1 Receive Volume Control Performance 2N
------------	---------------	-----------	----------	---

rcv_vol_wb-70

Calculated Value: 22.78 dB OK

Ok**Limits**

	lower
Run 1	6.00 dB

ANSI/TIA 5050-2018 \ 2N HAC ON \ EVS NB 13.2 kbps\LTE Band 41

Correction

rcv_vol_wb	93.08 dB[SPL]	2024.3.31	Measured	5.1 Receive Volume Control Performance 2N
------------	---------------	-----------	----------	---

rcv_vol_wb-70

Calculated Value: 23.08 dB OK

Ok**Limits**

	lower
Run 1	6.00 dB

ANSI/TIA 5050-2018 \ 2N HAC ON \ EVS NB 13.2 kbps\LTE Band 66

Correction

rcv_vol_wb	94.08 dB[SPL]	2024.3.31	Measured	5.1 Receive Volume Control Performance 2N
------------	---------------	-----------	----------	---

rcv_vol_wb-70

Calculated Value: 24.08 dB OK

Ok

Limits

	lower
Run 1	6.00 dB

ANSI/TIA 5050-2018 \ 2N HAC ON \ EVS NB 13.2 kbps\LTE Band 71

Correction

rcv_vol_wb	92.68 dB[SPL]	2024.3.31	Measured	5.1 Receive Volume Control Performance 2N
------------	---------------	-----------	----------	---

rcv_vol_wb-70

Calculated Value: 22.68 dB OK

Ok

Limits

	lower
Run 1	6.00 dB

ANSI/TIA 5050-2018 \ 2N HAC ON \ EVS NB 13.2 kbps\WLAN 2.4GHz

Correction

rcv_vol_wb	91.29 dB[SPL]	2024.3.31	Measured	5.1 Receive Volume Control Performance 2N
------------	---------------	-----------	----------	---

rcv_vol_wb-70

Calculated Value: 21.29 dB OK

Ok**Limits**

	lower
Run 1	6.00 dB

ANSI/TIA 5050-2018 \ 2N HAC ON \ EVS NB 13.2 kbps\WLAN 5.2GHz

Correction

rcv_vol_wb	88.67 dB[SPL]	2024.3.31	Measured	5.1 Receive Volume Control Performance 2N
------------	---------------	-----------	----------	---

rcv_vol_wb-70

Calculated Value: 18.67 dB OK

Ok**Limits**

	lower
Run 1	6.00 dB

ANSI/TIA 5050-2018 \ 2N HAC ON \ EVS NB 13.2 kbps\WLAN 5.3GHz

Correction

rcv_vol_wb	91.21 dB[SPL]	2024.3.31	Measured	5.1 Receive Volume Control Performance 2N
------------	---------------	-----------	----------	---

rcv_vol_wb-70

Calculated Value: 21.21 dB OK

Ok**Limits**

	lower
Run 1	6.00 dB

ANSI/TIA 5050-2018 \ 2N HAC ON \ EVS NB 13.2 kbps\WLAN 5.5GHz

Correction

rcv_vol_wb	86.85 dB[SPL]	2024.3.31	Measured	5.1 Receive Volume Control Performance 2N
------------	---------------	-----------	----------	---

rcv_vol_wb-70

Calculated Value: 16.85 dB OK

Ok**Limits**

	lower
Run 1	6.00 dB

ANSI/TIA 5050-2018 \ 2N HAC ON \ EVS NB 13.2 kbps\WLAN 5.8GHz

Correction

rcv_vol_wb	92.54 dB[SPL]	2024.3.31	Measured	5.1 Receive Volume Control Performance 2N
------------	---------------	-----------	----------	---

rcv_vol_wb-70

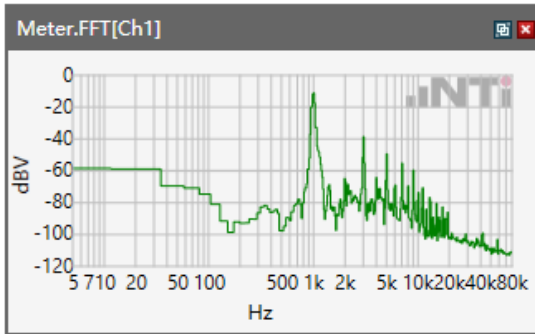
Calculated Value: 22.54 dB OK

Ok**Limits**

	lower
Run 1	6.00 dB

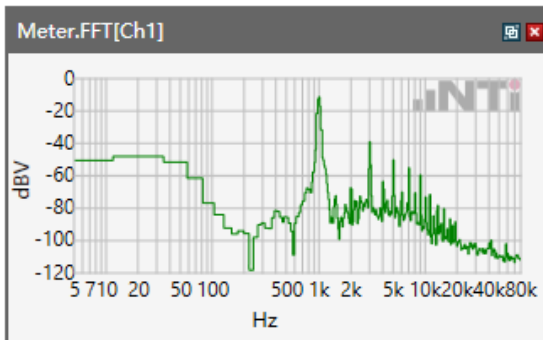
5.1 Receive Volume Control Performance 2N---EVS WB

ANSI/TIA 5050-2018 \ 2N HAC ON \ EVS WB 13.2 kbps\LTE Band 2



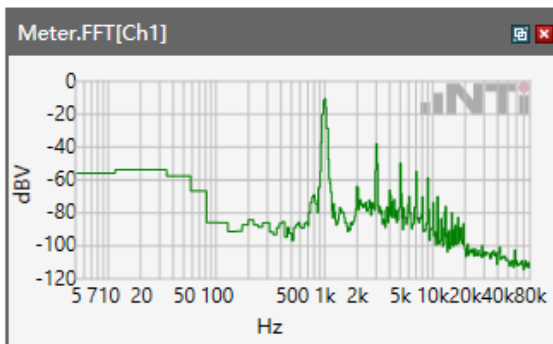
Speech Level RCV: 93.96 dB[SPL]

ANSI/TIA 5050-2018 \ 2N HAC ON \ EVS WB 13.2 kbps\ LTE Band 4



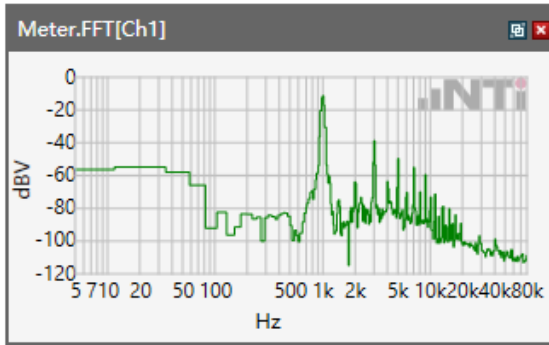
Speech Level RCV: 93.76 dB[SPL]

ANSI/TIA 5050-2018 \ 2N HAC ON \ EVS WB 13.2 kbps\LTE Band 5



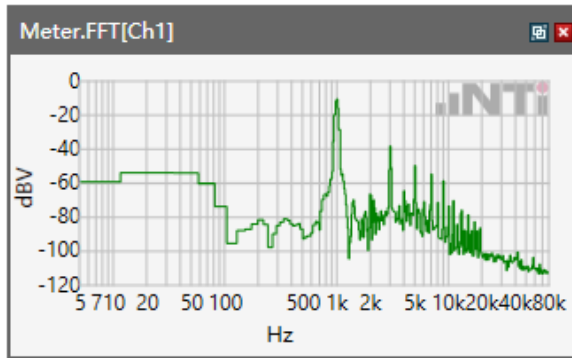
Speech Level RCV: 90.66 dB[SPL]

ANSI/TIA 5050-2018 \ 2N HAC ON \ EVS WB 13.2 kbps\LTE Band 12



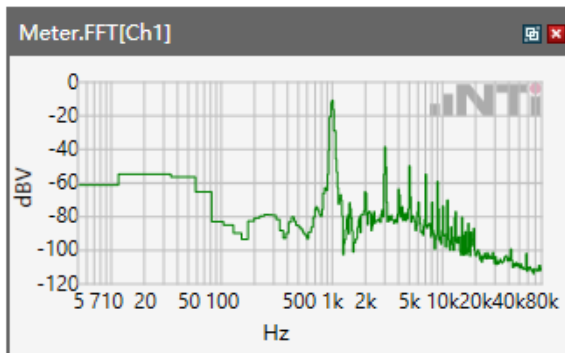
Speech Level RCV: 90.76 dB[SPL]

ANSI/TIA 5050-2018 \ 2N HAC ON \ EVS WB 13.2 kbps\ LTE Band 17



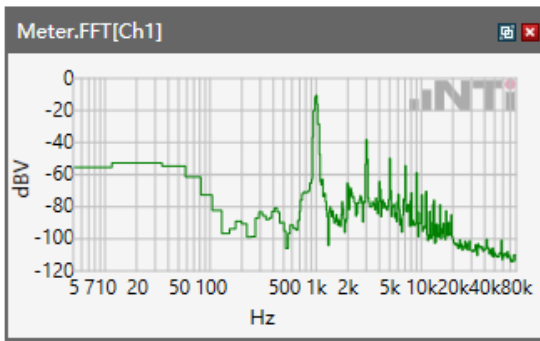
Speech Level RCV: 90.68 dB[SPL]

ANSI/TIA 5050-2018 \ 2N HAC ON \ EVS WB 13.2 kbps\LTE Band 25



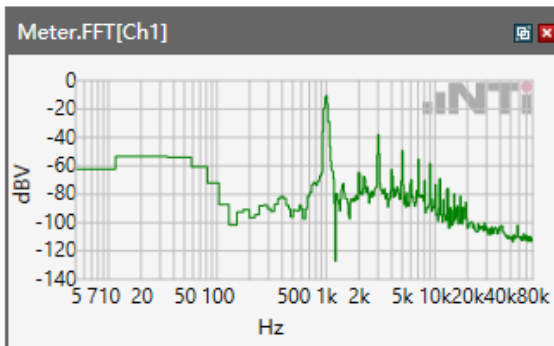
Speech Level RCV: 93.38 dB[SPL]

ANSI/TIA 5050-2018 \ 2N HAC ON \ EVS WB 13.2 kbps\ LTE Band 26



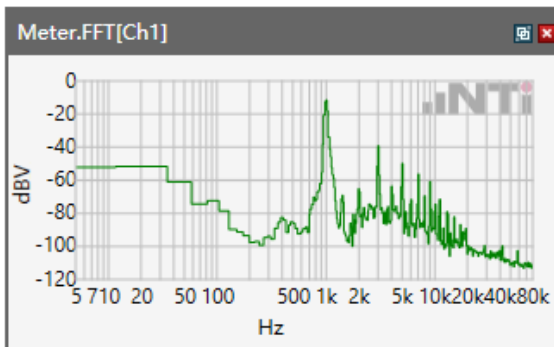
Speech Level RCV: 90.68 dB[SPL]

ANSI/TIA 5050-2018 \ 2N HAC ON \ EVS WB 13.2 kbps\ LTE Band 41



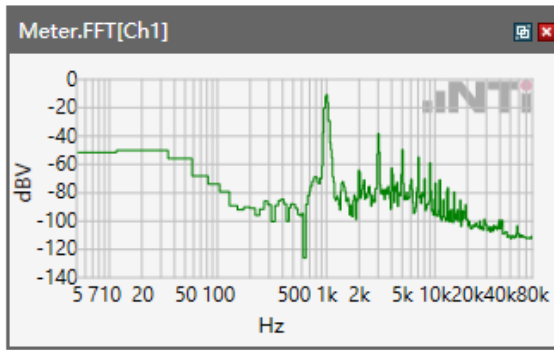
Speech Level RCV: 93.68 dB[SPL]

ANSI/TIA 5050-2018 \ 2N HAC ON \ EVS WB 13.2 kbps\ LTE Band 66



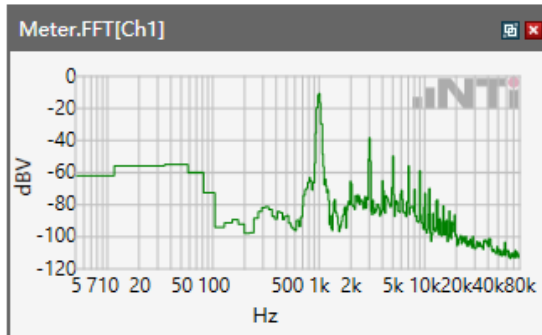
Speech Level RCV: 93.58 dB[SPL]

ANSI/TIA 5050-2018 \ 2N HAC ON \ EVS WB 13.2 kbps\LTE Band 71



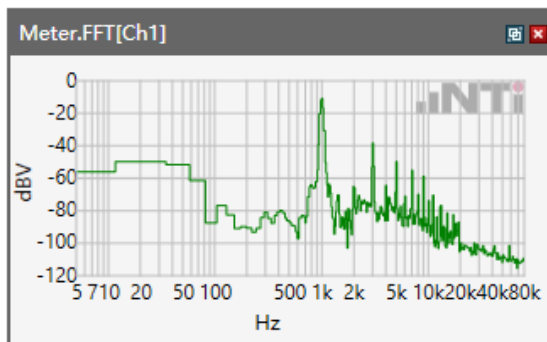
Speech Level RCV: 93.68 dB[SPL]

ANSI/TIA 5050-2018 \ 2N HAC ON \ EVS WB 13.2 kbps \WLAN 2.4GHz



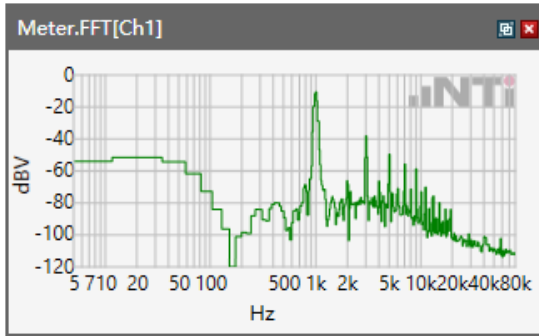
Speech Level RCV: 93.49 dB[SPL]

ANSI/TIA 5050-2018 \ 2N HAC ON \ EVS WB 13.2 kbps \WLAN 5.2GHz



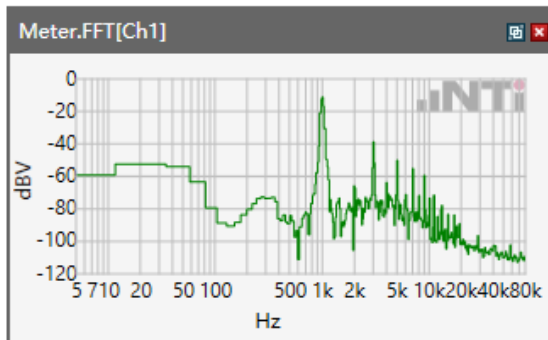
Speech Level RCV: 92.89 dB[SPL]

ANSI/TIA 5050-2018 \ 2N HAC ON \ EVS WB 13.2 kbps \ WLAN 5.3 GHz



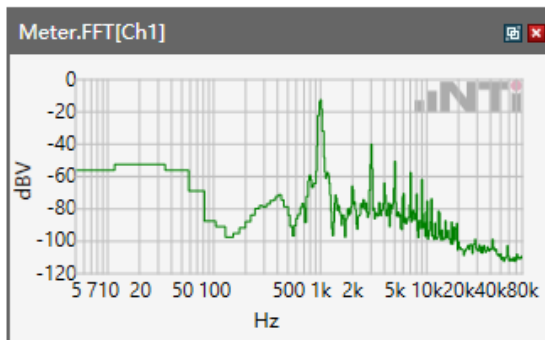
Speech Level RCV: 93.51 dB[SPL]

ANSI/TIA 5050-2018 \ 2N HAC ON \ EVS WB 13.2 kbps \ WLAN 5.5 GHz



Speech Level RCV: 92.81 dB[SPL]

ANSI/TIA 5050-2018 \ 2N HAC ON \ EVS WB 13.2 kbps \ WLAN 5.8 GHz



Speech Level RCV: 91.06 dB[SPL]

5.1.1 -1 Conversation Gain 2N

ANSI/TIA 5050-2018 \ 2N HAC ON \ EVS WB 13.2 kbps\LTE Band 2

Correction

rcv_vol_wb	93.96 dB[SPL]	2024.3.31	Measured	5.1 Receive Volume Control Performance 2N
------------	---------------	-----------	----------	---

rcv_vol_wb-70

Calculated Value: 23.96 dB OK

Ok

Limits

	lower
Run 1	6.00 dB

ANSI/TIA 5050-2018 \ 2N HAC ON \ EVS WB 13.2 kbps\LTE Band 4

Correction

rcv_vol_wb	93.76 dB[SPL]	2024.3.31	Measured	5.1 Receive Volume Control Performance 2N
------------	---------------	-----------	----------	---

rcv_vol_wb-70

Calculated Value: 23.76 dB OK

Ok

Limits

	lower
Run 1	6.00 dB

ANSI/TIA 5050-2018 \ 2N HAC ON \ EVS WB 13.2 kbps\LTE Band 5

Correction

rcv_vol_wb	90.66 dB[SPL]	2024.3.31	Measured	5.1 Receive Volume Control Performance 2N
------------	---------------	-----------	----------	---

rcv_vol_wb-70

Calculated Value: 20.66 dB OK

Ok**Limits**

	lower
Run 1	6.00 dB

ANSI/TIA 5050-2018 \ 2N HAC ON \ EVS WB 13.2 kbps\LTE Band 12

Correction

rcv_vol_wb	90.76 dB[SPL]	2024.3.31	Measured	5.1 Receive Volume Control Performance 2N
------------	---------------	-----------	----------	---

rcv_vol_wb-70

Calculated Value: 20.76 dB OK

Ok**Limits**

	lower
Run 1	6.00 dB

ANSI/TIA 5050-2018 \ 2N HAC ON \ EVS WB 13.2 kbps\LTE Band 17

Correction

rcv_vol_wb	90.68 dB[SPL]	2024.3.31	Measured	5.1 Receive Volume Control Performance 2N
------------	---------------	-----------	----------	---

rcv_vol_wb-70

Calculated Value: 20.68 dB OK

Ok**Limits**

	lower
Run 1	6.00 dB

ANSI/TIA 5050-2018 \ 2N HAC ON \ EVS WB 13.2 kbps\LTE Band 25

Correction

rcv_vol_wb	93.38 dB[SPL]	2024.3.31	Measured	5.1 Receive Volume Control Performance 2N
------------	---------------	-----------	----------	---

rcv_vol_wb-70

Calculated Value: 23.38 dB OK

Ok**Limits**

	lower
Run 1	6.00 dB



ANSI/TIA 5050-2018 \ 2N HAC ON \ EVS WB 13.2 kbps\LTE Band 26

Correction

rcv_vol_wb	90.68 dB[SPL]	2024.3.31	Measured	5.1 Receive Volume Control Performance 2N
------------	---------------	-----------	----------	---

rcv_vol_wb-70

Calculated Value: 20.68 dB OK

Ok

Limits

	lower
Run 1	6.00 dB

ANSI/TIA 5050-2018 \ 2N HAC ON \ EVS WB 13.2 kbps\LTE Band 41

Correction

rcv_vol_wb	93.68 dB[SPL]	2024.3.31	Measured	5.1 Receive Volume Control Performance 2N
------------	---------------	-----------	----------	---

rcv_vol_wb-70

Calculated Value: 23.68 dB OK

Ok

Limits

	lower
Run 1	6.00 dB

ANSI/TIA 5050-2018 \ 2N HAC ON \ EVS WB 13.2 kbps\LTE Band 66

Correction

rcv_vol_wb	93.58 dB[SPL]	2024.3.31	Measured	5.1 Receive Volume Control Performance 2N
------------	---------------	-----------	----------	---

rcv_vol_wb-70

Calculated Value: 23.58 dB OK

Ok**Limits**

	lower
Run 1	6.00 dB

ANSI/TIA 5050-2018 \ 2N HAC ON \ EVS WB 13.2 kbps\LTE Band 71

Correction

rcv_vol_wb	93.68 dB[SPL]	2024.3.31	Measured	5.1 Receive Volume Control Performance 2N
------------	---------------	-----------	----------	---

rcv_vol_wb-70

Calculated Value: 23.68 dB OK

Ok**Limits**

	lower
Run 1	6.00 dB



ANSI/TIA 5050-2018 \ 2N HAC ON \ EVS WB 13.2 kbps\WLAN 2.4GHz

Correction

rcv_vol_wb	93.49 dB[SPL]	2024.3.31	Measured	5.1 Receive Volume Control Performance 2N
------------	---------------	-----------	----------	---

rcv_vol_wb-70

Calculated Value: 23.49 dB OK

Ok

Limits

	lower
Run 1	6.00 dB

ANSI/TIA 5050-2018 \ 2N HAC ON \ EVS WB 13.2 kbps\WLAN 5.2GHz

Correction

rcv_vol_wb	92.89 dB[SPL]	2024.3.31	Measured	5.1 Receive Volume Control Performance 2N
------------	---------------	-----------	----------	---

rcv_vol_wb-70

Calculated Value: 22.89 dB OK

Ok

Limits

	lower
Run 1	6.00 dB



ANSI/TIA 5050-2018 \ 2N HAC ON \ EVS WB 13.2 kbps\WLAN 5.3GHz

Correction

rcv_vol_wb	93.51 dB[SPL]	2024.3.31	Measured	5.1 Receive Volume Control Performance 2N
------------	---------------	-----------	----------	---

rcv_vol_wb-70

Calculated Value: 23.51 dB OK

Ok

Limits

	lower
Run 1	6.00 dB

ANSI/TIA 5050-2018 \ 2N HAC ON \ EVS WB 13.2 kbps\WLAN 5.5GHz

Correction

rcv_vol_wb	92.81 dB[SPL]	2024.3.31	Measured	5.1 Receive Volume Control Performance 2N
------------	---------------	-----------	----------	---

rcv_vol_wb-70

Calculated Value: 22.81 dB OK

Ok

Limits

	lower
Run 1	6.00 dB



ANSI/TIA 5050-2018 \ 2N HAC ON \ EVS WB 13.2 kbps\WLAN 5.8GHz

Correction

rcv_vol_wb	91.06 dB[SPL]	2024.3.31	Measured	5.1 Receive Volume Control Performance 2N
------------	---------------	-----------	----------	---

rcv_vol_wb-70

Calculated Value: 21.06 dB OK

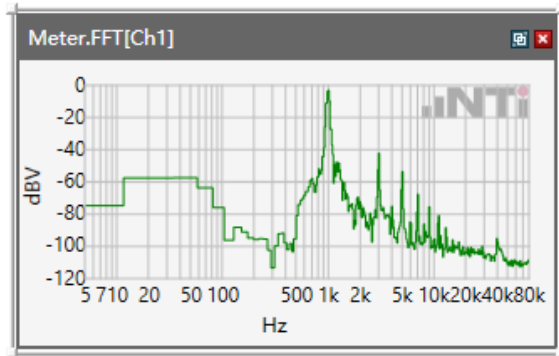
Ok

Limits

	lower
Run 1	6.00 dB

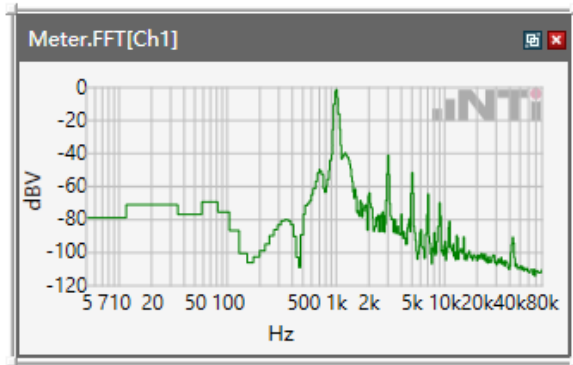
5.1 Receive Volume Control Performance 2N---EVS SWB

ANSI/TIA 5050-2018 \ 2N HAC ON \ EVS SWB 13.2 kbps\LTE Band 2



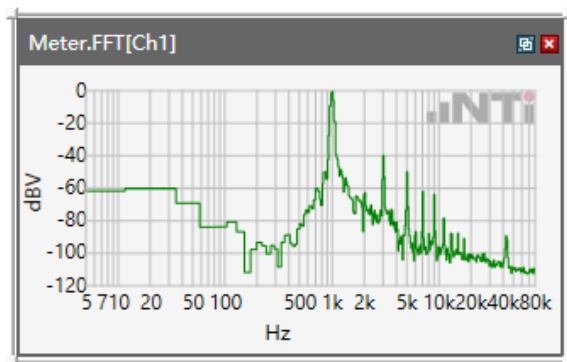
Speech Level RCV: 92.4 dB[SPL]

ANSI/TIA 5050-2018 \ 2N HAC ON \ EVS SWB 13.2 kbps\ LTE Band 4



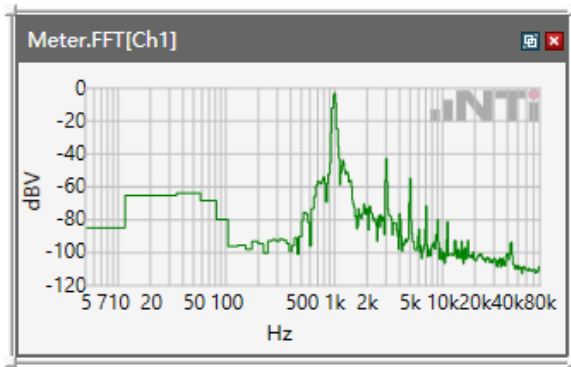
Speech Level RCV: 93.82 dB[SPL]

ANSI/TIA 5050-2018 \ 2N HAC ON \ EVS SWB 13.2 kbps\LTE Band 5



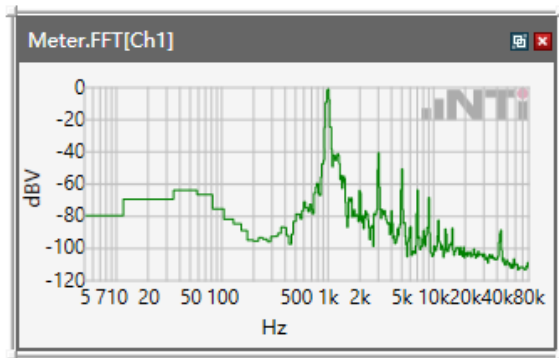
Speech Level RCV: 92.51 dB[SPL]

ANSI/TIA 5050-2018 \ 2N HAC ON \ EVS SWB 13.2 kbps\LTE Band 12



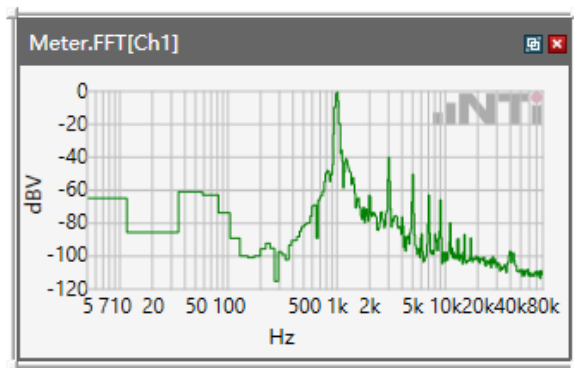
Speech Level RCV: 92.45 dB[SPL]

ANSI/TIA 5050-2018 \ 2N HAC ON \ EVS SWB 13.2 kbps\ LTE Band 17



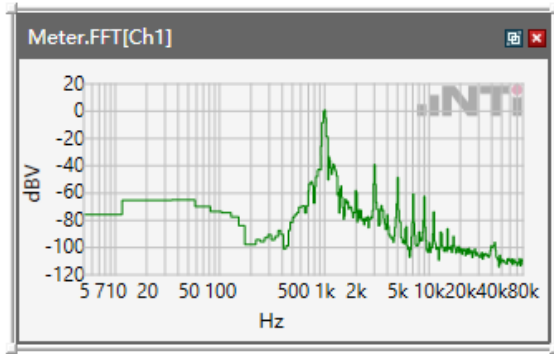
Speech Level RCV: 93.52 dB[SPL]

ANSI/TIA 5050-2018 \ 2N HAC ON \ EVS SWB 13.2 kbps\LTE Band 25



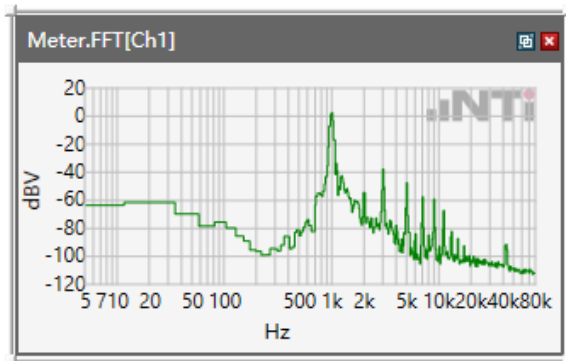
Speech Level RCV: 94.75 dB[SPL]

ANSI/TIA 5050-2018 \ 2N HAC ON \ EVS SWB 13.2 kbps\ LTE Band 26



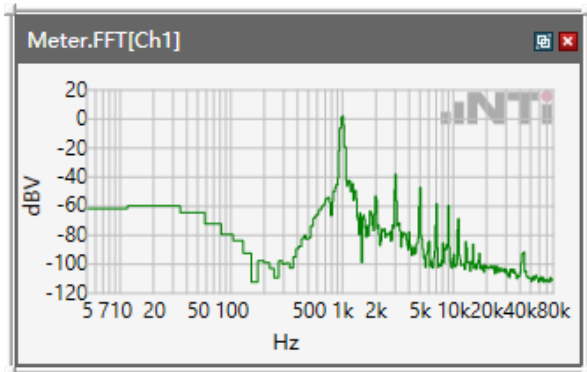
Speech Level RCV: 91.53 dB[SPL]

ANSI/TIA 5050-2018 \ 2N HAC ON \ EVS SWB 13.2 kbps\LTE Band 41



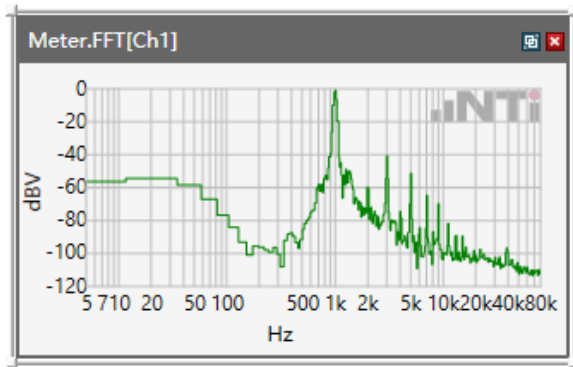
Speech Level RCV: 94.85 dB[SPL]

ANSI/TIA 5050-2018 \ 2N HAC ON \ EVS SWB 13.2 kbps\LTE Band 66



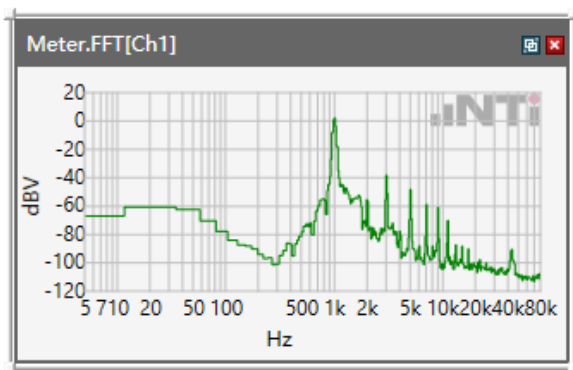
Speech Level RCV: 91.41 dB[SPL]

ANSI/TIA 5050-2018 \ 2N HAC ON \ EVS SWB 13.2 kbps\LTE Band 71



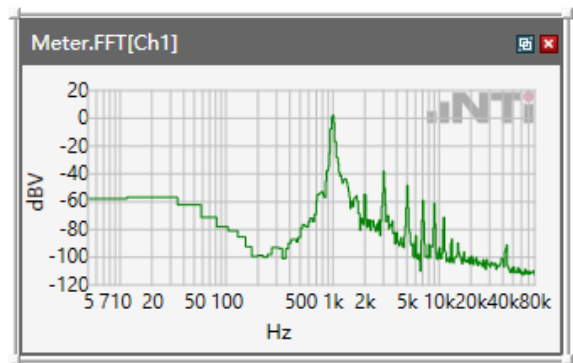
Speech Level RCV: 92.26 dB[SPL]

ANSI/TIA 5050-2018 \ 2N HAC ON \ EVS SWB 13.2 kbps\WLAN 2.4GHz



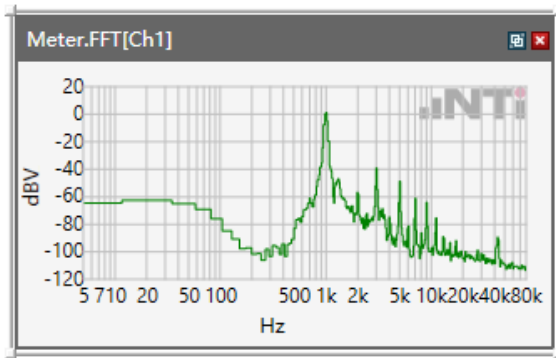
Speech Level RCV: 91.82 dB[SPL]

ANSI/TIA 5050-2018 \ 2N HAC ON \ EVS SWB 13.2 kbps\WLAN 5.2GHz



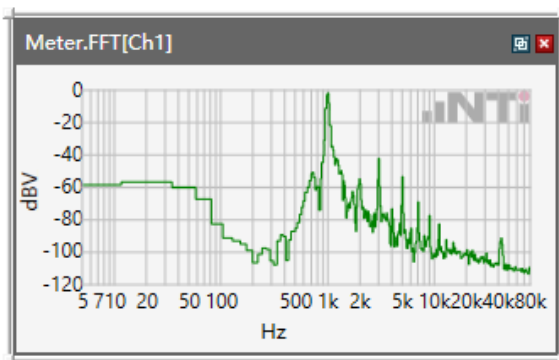
Speech Level RCV: 96.34 dB[SPL]

ANSI/TIA 5050-2018 \ 2N HAC ON \ EVS SWB 13.2 kbps\WLAN 5.3 GHz



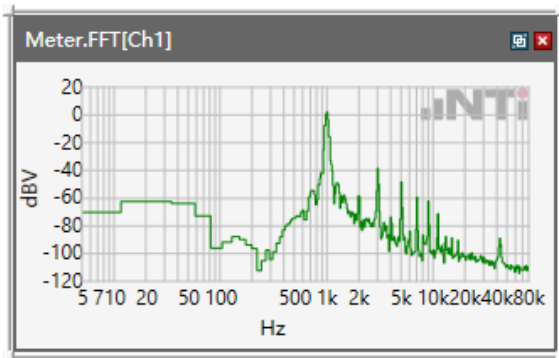
Speech Level RCV: 95.33 dB[SPL]

ANSI/TIA 5050-2018 \ 2N HAC ON \ EVS SWB 13.2 kbps\WLAN 5.5 GHz



Speech Level RCV: 96.27 dB[SPL]

ANSI/TIA 5050-2018 \ 2N HAC ON \ EVS SWB 13.2 kbps\WLAN 5.8 GHz



Speech Level RCV: 95.35 dB[SPL]

5.1.1 -1 Conversation Gain 2N

ANSI/TIA 5050-2018 \ 2N HAC ON \ EVS SWB 13.2 kbps\LTE Band 2

Correction

rcv_vol_wb	92.4 dB[SPL]	2024.3.31	Measured	5.1 Receive Volume Control Performance 2N
------------	--------------	-----------	----------	---

rcv_vol_wb-70

Calculated Value: 22.4 dB OK

Ok

Limits

	lower
Run 1	6.00 dB

ANSI/TIA 5050-2018 \ 2N HAC ON \ EVS SWB 13.2 kbps\LTE Band 4

Correction

rcv_vol_wb	93.82 dB[SPL]	2024.3.31	Measured	5.1 Receive Volume Control Performance 2N
------------	---------------	-----------	----------	---

rcv_vol_wb-70

Calculated Value: 23.82 dB OK

Ok

Limits

	lower
Run 1	6.00 dB

ANSI/TIA 5050-2018 \ 2N HAC ON \ EVS SWB 13.2 kbps\LTE Band 5

Correction

rcv_vol_wb	92.51 dB[SPL]	2024.3.31	Measured	5.1 Receive Volume Control Performance 2N
------------	---------------	-----------	----------	---

rcv_vol_wb-70

Calculated Value: 22.51 dB OK

Ok**Limits**

	lower
Run 1	6.00 dB

ANSI/TIA 5050-2018 \ 2N HAC ON \ EVS SWB 13.2 kbps\LTE Band 12

Correction

rcv_vol_wb	92.45 dB[SPL]	2024.3.31	Measured	5.1 Receive Volume Control Performance 2N
------------	---------------	-----------	----------	---

rcv_vol_wb-70

Calculated Value: 22.45 dB OK

Ok**Limits**

	lower
Run 1	6.00 dB



ANSI/TIA 5050-2018 \ 2N HAC ON \ EVS SWB 13.2 kbps\LTE Band 17

Correction

rcv_vol_wb	93.52 dB[SPL]	2024.3.31	Measured	5.1 Receive Volume Control Performance 2N
------------	---------------	-----------	----------	---

rcv_vol_wb-70

Calculated Value: 23.52 dB OK

Ok

Limits

	lower
Run 1	6.00 dB

ANSI/TIA 5050-2018 \ 2N HAC ON \ EVS SWB 13.2 kbps\LTE Band 25

Correction

rcv_vol_wb	94.75 dB[SPL]	2024.3.31	Measured	5.1 Receive Volume Control Performance 2N
------------	---------------	-----------	----------	---

rcv_vol_wb-70

Calculated Value: 24.75 dB OK

Ok

Limits

	lower
Run 1	6.00 dB

ANSI/TIA 5050-2018 \ 2N HAC ON \ EVS SWB 13.2 kbps\LTE Band 26

Correction

rcv_vol_wb	91.53 dB[SPL]	2024.3.31	Measured	5.1 Receive Volume Control Performance 2N
------------	---------------	-----------	----------	---

rcv_vol_wb-70

Calculated Value: 21.53 dB OK

Ok**Limits**

	lower
Run 1	6.00 dB

ANSI/TIA 5050-2018 \ 2N HAC ON \ EVS SWB 13.2 kbps\LTE Band 41

Correction

rcv_vol_wb	94.85 dB[SPL]	2024.3.31	Measured	5.1 Receive Volume Control Performance 2N
------------	---------------	-----------	----------	---

rcv_vol_wb-70

Calculated Value: 24.85 dB OK

Ok**Limits**

	lower
Run 1	6.00 dB

ANSI/TIA 5050-2018 \ 2N HAC ON \ EVS SWB 13.2 kbps\LTE Band 66

Correction

rcv_vol_wb	91.41 dB[SPL]	2024.3.31	Measured	5.1 Receive Volume Control Performance 2N
------------	---------------	-----------	----------	---

rcv_vol_wb-70

Calculated Value: 21.41 dB OK

Ok**Limits**

	lower
Run 1	6.00 dB

ANSI/TIA 5050-2018 \ 2N HAC ON \ EVS SWB 13.2 kbps\LTE Band 71

Correction

rcv_vol_wb	92.26 dB[SPL]	2024.3.31	Measured	5.1 Receive Volume Control Performance 2N
------------	---------------	-----------	----------	---

rcv_vol_wb-70

Calculated Value: 22.26 dB OK

Ok**Limits**

	lower
Run 1	6.00 dB

ANSI/TIA 5050-2018 \ 2N HAC ON \ EVS SWB 13.2 kbps\WLAN 2.4GHz

Correction

rcv_vol_wb	91.82 dB[SPL]	2024.3.31	Measured	5.1 Receive Volume Control Performance 2N
------------	---------------	-----------	----------	---

rcv_vol_wb-70

Calculated Value: 21.82 dB OK

Ok

Limits

	lower
Run 1	6.00 dB

ANSI/TIA 5050-2018 \ 2N HAC ON \ EVS SWB 13.2 kbps\WLAN 5.2GHz

Correction

rcv_vol_wb	96.34 dB[SPL]	2024.3.31	Measured	5.1 Receive Volume Control Performance 2N
------------	---------------	-----------	----------	---

rcv_vol_wb-70

Calculated Value: 26.34 dB OK

Ok

Limits

	lower
Run 1	6.00 dB

ANSI/TIA 5050-2018 \ 2N HAC ON \ EVS SWB 13.2 kbps\WLAN 5.3GHz

Correction

rcv_vol_wb	95.33 dB[SPL]	2024.3.31	Measured	5.1 Receive Volume Control Performance 2N
------------	---------------	-----------	----------	---

rcv_vol_wb-70

Calculated Value: 25.33 dB OK

Ok**Limits**

	lower
Run 1	6.00 dB

ANSI/TIA 5050-2018 \ 2N HAC ON \ EVS SWB 13.2 kbps\WLAN 5.5GHz

Correction

rcv_vol_wb	96.27 dB[SPL]	2024.3.31	Measured	5.1 Receive Volume Control Performance 2N
------------	---------------	-----------	----------	---

rcv_vol_wb-70

Calculated Value: 26.27 dB OK

Ok**Limits**

	lower
Run 1	6.00 dB



ANSI/TIA 5050-2018 \ 2N HAC ON \ EVS SWB 13.2 kbps\WLAN 5.8GHz

Correction

rcv_vol_wb	95.35 dB[SPL]	2024.3.31	Measured	5.1 Receive Volume Control Performance 2N
------------	---------------	-----------	----------	---

rcv_vol_wb-70

Calculated Value: 25.35 dB OK

Ok

Limits

	lower
Run 1	6.00 dB