

FCC TEST REPORT

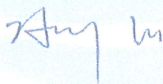
Product Name: Mobile Phone
Trade Mark: BLU
Model No.: C5L 2020
Add. Model No.: J5L
Report Number: 200609002RFM-2
Test Standards: FCC 47 CFR Part 22
 FCC 47 CFR Part 24
 FCC 47 CFR Part 27
FCC ID: YHLBLUC5L20
Test Result: PASS
Date of Issue: July 14, 2020

Prepared for:

BLU Products, Inc.
10814 NW 33rd St # 100 Doral, FL 33172 ,USA

Prepared by:

Shenzhen UnionTrust Quality and Technology Co., Ltd.
16/F, Block A, Building 6, Baoneng Science and Technology Park,
Qingxiang Road No.1, Longhua New District, Shenzhen, China
TEL: +86-755-2823 0888
FAX: +86-755-2823 0886

Prepared by: 

Reviewed by: 



Henry Lu
Team Leader

Kevin Liang
Assistant Manager

Approved by: 
Billy Li
Technical Director

Date: July 14, 2020

Shenzhen UnionTrust Quality and Technology Co., Ltd.

Version

Version No.	Date	Description
V1.0	July 14, 2020	Original

**Shenzhen UnionTrust Quality and Technology Co., Ltd.**

Address: 16/F, Block A, Building 6, Baoneng Science and Technology Park, Qingxiang Road No.1, Longhua New District, Shenzhen, China

Tel: +86-755-28230888

Fax: +86-755-28230886

E-mail: info@uttlab.com<http://www.uttlab.com>UTTR-RF-FCC4G-V1.0

CONTENTS

1. GENERAL INFORMATION	5
1.1 CLIENT INFORMATION	5
1.2 EUT INFORMATION	5
1.2.1 GENERAL DESCRIPTION OF EUT	5
1.2.2 DESCRIPTION OF ACCESSORIES.....	5
1.3 PRODUCT SPECIFICATION SUBJECTIVE TO THIS STANDARD	6
1.4 DESCRIPTION OF SUPPORT UNITS	9
1.5 TEST LOCATION	9
1.6 TEST FACILITY	9
1.7 DEVIATION FROM STANDARDS	10
1.8 ABNORMALITIES FROM STANDARD CONDITIONS	10
1.9 OTHER INFORMATION REQUESTED BY THE CUSTOMER	10
1.10 MEASUREMENT UNCERTAINTY	10
2. TEST SUMMARY	11
3. EQUIPMENT LIST	13
4. TEST CONFIGURATION	14
4.1 ENVIRONMENTAL CONDITIONS FOR TESTING	14
4.2 TEST SETUP	15
4.2.1 FOR RADIATED EMISSIONS TEST SETUP	15
4.2.2 FOR CONDUCTED RF TEST SETUP	16
4.3 TEST CHANNELS	17
4.4 SYSTEM TEST CONFIGURATION	19
4.5 PRE-SCAN	20
4.5.1 LTE BAND 2	20
4.5.2 LTE BAND 4	21
4.5.3 LTE BAND 5	23
4.5.4 LTE BAND 7	24
4.5.5 LTE BAND 12	25
4.5.6 LTE BAND 17	26
5. RADIO TECHNICAL REQUIREMENTS SPECIFICATION	31
5.1 REFERENCE DOCUMENTS FOR TESTING	31
5.2 ERP OR EIRP	31
5.2.1 LTE BAND 2	32
5.2.2 LTE BAND 4	33
5.2.3 LTE BAND 5	34
5.2.4 LTE BAND 7	34
5.2.5 LTE BAND 12	35
5.2.6 LTE BAND 17	35
5.3 CONDUCTED OUTPUT POWER	36
5.4 PEAK-TO-AVERAGE RATIO	37
5.4.1 LTE BAND 2	37
5.4.2 LTE BAND 4	40
5.4.3 LTE BAND 5	43
5.4.4 LTE BAND 7	46
5.4.5 LTE BAND 12	49
5.4.6 LTE BAND 17	52
5.5 99%&26dB BANDWIDTH	55
5.5.1 LTE BAND 2	55
5.5.2 LTE BAND 4	62
5.5.3 LTE BAND 5	69
5.5.4 LTE BAND 7	74
5.5.5 LTE BAND 12	79
5.5.6 LTE BAND 17	84

5.6	BAND EDGE AT ANTENNA TERMINALS	87
5.6.1	LTE BAND 2	88
5.6.2	LTE BAND 4	100
5.6.3	LTE BAND 5	112
5.6.4	LTE BAND 7	120
5.6.5	LTE BAND 12	128
5.6.6	LTE BAND 17	136
5.7	SPURIOUS EMISSIONS AT ANTENNA TERMINALS	140
5.7.1	LTE BAND 2	141
5.7.2	LTE BAND 4	147
5.7.3	LTE BAND 5	153
5.7.4	LTE BAND 7	157
5.7.5	LTE BAND 12	161
5.7.6	LTE BAND 17	165
5.8	FIELD STRENGTH OF SPURIOUS RADIATION	167
5.8.1	LTE BAND 2	168
5.8.2	LTE BAND 4	169
5.8.3	LTE BAND 5	170
5.8.4	LTE BAND 7	171
5.8.5	LTE BAND 12	172
5.8.6	LTE BAND 17	173
5.9	FREQUENCY STABILITY	175
5.9.1	LTE BAND 2	175
5.9.2	LTE BAND 4	176
5.9.3	LTE BAND 5	176
5.9.4	LTE BAND 7	177
5.9.5	LTE BAND 12	177
5.9.6	LTE BAND 17	178
APPENDIX 1 PHOTOS OF TEST SETUP		179
APPENDIX 2 PHOTOS OF EUT CONSTRUCTIONAL DETAILS		179

1. GENERAL INFORMATION

1.1 CLIENT INFORMATION

Applicant:	BLU Products, Inc.
Address of Applicant:	10814 NW 33rd St # 100 Doral, FL 33172 ,USA
Manufacturer:	BLU Products, Inc.
Address of Manufacturer:	10814 NW 33rd St # 100 Doral, FL 33172 ,USA

1.2 EUT INFORMATION

1.2.1 General Description of EUT

Product Name:	Mobile Phone	
Model No.:	C5L 2020	
Add. Model No.:	J5L	
Trade Mark:	BLU	
DUT Stage:	Identical Prototype	
EUT Supports Function:	GSM Bands:	GSM850/1900
	UTRA Bands:	Band II/ Band IV/ Band V
	E-UTRA Bands:	FDD Band 2/ Band 4/ Band 5/ Band 7/ Band 12/ Band 17
	2.4 GHz ISM Band:	IEEE 802.11b/g/n Bluetooth V4.2
Sample Received Date:	June 12, 2020	
Sample Tested Date:	June 12, 2020 to July 13, 2020	
Note: The test data is gathered from a production sample, provided by the manufacturer. The camera appearance and memory of others models listed in the report is different from main-test model C5L 2020, but the circuit and the electronic construction do not change, declared by the manufacturer.		

1.2.2 Description of Accessories

Adapter	
Model No.:	US-WW-1006
Input:	100-240 V~50/60 Hz 0.15 A
Output:	5.0 V = 1000mA
DC Cable:	1.00 Meter, Shielded without ferrite
Manufacturer:	SHEN ZHEN NANBANG ELECTRONICS CO.,LTD.

Battery	
Model No.:	C775448220L
Battery Type:	Lithium-ion Polymer Rechargeable Battery
Rated Voltage:	3.8 Vdc
Limited Charge Voltage:	4.35 Vdc
Rated Capacity:	2200 mAh
Manufacturer:	shenzhen Aerospace Electronic CO,LTD

1.3 PRODUCT SPECIFICATION SUBJECTIVE TO THIS STANDARD

Support Networks:	LTE	
Type of Modulation:	LTE Band 2/4/5/7/12/17	QPSK,16QAM
Antenna Type:	PIFA Antenna	
Antenna Gain:	LTE Band 2:	1.2 dBi
	LTE Band 4:	1.2 dBi
	LTE Band 5:	-2.0dBi
	LTE Band 7:	-1.3dBi
	LTE Band 12:	-1.5dBi
	LTE Band 17:	-1.5 dBi
Normal Test Voltage:	3.8 Vdc	
Extreme Test Voltage:	3.6 to 4.3Vdc	
Extreme Test Temperature:	-30 °C to +55 °C	

Summary of Results:									
Bands	BW	Modulation	Frequency Range	Max RF Output Power (dBm)		EIRP (W)	99% BW (MHz)	Emission Designator	
	(MHz)		(MHz)	Conducted (Average)	ERP/EIRP (Average)				
2	1.4	QPSK	1850.7-1909.3	23.52	24.73	0.29717	1.1146	1M11G7D	
		16QAM		22.53	23.73	0.23605	1.1194	1M12W7D	
	3	QPSK	1851.5-1908.5	23.50	24.70	0.29512	2.7325	2M73G7D	
		16QAM		22.58	23.78	0.23878	2.7278	2M73W7D	
	5	QPSK	1852.5-1907.5	23.53	24.73	0.29717	4.5524	4M55G7D	
		16QAM		22.67	23.87	0.24378	4.5752	4M58W7D	
	10	QPSK	1855.0-1905.0	23.44	24.64	0.29107	9.0403	9M94G7D	
		16QAM		22.68	23.88	0.24434	9.0498	9M05W7D	
	15	QPSK	1857.5-1902.5	23.45	24.65	0.29174	13.568	13M6G7D	
		16QAM		22.63	23.83	0.24155	13.627	13M6W7D	
	20	QPSK	1860.0-1900.0	23.53	24.73	0.29717	18.178	18M2G7D	
		16QAM		22.70	23.90	0.24547	18.213	18M2W7D	
	4	1.4	QPSK	1710.7-1754.3	23.11	24.31	0.26977	1.1007	1M10G7D
			16QAM		22.42	23.62	0.23014	1.1075	1M11W7D
3		QPSK	1711.5-1753.5	23.05	24.25	0.26607	2.7186	2M72G7D	
		16QAM		22.43	23.63	0.23067	2.7185	2M72W7D	
5		QPSK	1712.5-1752.5	23.10	24.30	0.26915	4.5437	4M54G7D	
		16QAM		22.45	23.65	0.23174	4.5627	4M56W7D	
10		QPSK	1715-1750	23.06	24.26	0.26669	9.0157	9M02G7D	
		16QAM		22.38	23.58	0.22803	9.0277	9M03W7D	
15		QPSK	1717.5-1747.5	23.15	24.35	0.27227	13.532	13M5G7D	
		16QAM		22.34	23.54	0.22594	13.512	13M5W7D	
20		QPSK	1720-1745	23.17	24.37	0.27353	18.063	18M0G7D	
		16QAM		22.48	23.68	0.23335	18.110	18M1W7D	
5		1.4	QPSK	824.7-848.3	22.94	18.79	0.07568	1.1081	1M11G7D
			16QAM		22.29	18.14	0.06516	1.1074	1M11W7D
	3	QPSK	825.5-847.5	22.91	18.76	0.07516	2.7116	2M71G7D	
		16QAM		22.34	18.19	0.06592	2.7154	2M72W7D	
	5	QPSK	826.5-846.5	22.95	18.73	0.07464	4.5415	4M54G7D	
		16QAM		22.35	18.20	0.06607	4.5685	4M57W7D	
	10	QPSK	829-844	22.97	18.82	0.07621	9.0203	9M02G7D	
		16QAM		22.38	18.23	0.06653	9.0229	9M02W7D	

Summary of Results:									
Bands	BW	Modulation	Frequency Range	Max RF Output Power (dBm)		EIRP (W)	99% BW (MHz)	Emission Designator	
	(MHz)		(MHz)	Conducted (Average)	ERP/EIRP (Average)				
7	5	QPSK	2502.5-2567.5	22.65	21.35	0.13646	4.5456	4M55G7D	
		16QAM		22.51	21.21	0.13213	4.5652	4M57W7D	
	10	QPSK	2505-2565	22.75	21.45	0.13964	9.0172	9M02G7D	
		16QAM		22.56	21.26	0.13366	9.0014	9M00W7D	
	15	QPSK	2507.5-2562.5	22.78	21.48	0.14060	13.503	13M5G7D	
		16QAM		22.48	21.18	0.13122	13.528	13M5W7D	
	20	QPSK	2510-2560	22.83	21.53	0.14223	18.017	18M0G7D	
		16QAM		22.60	21.30	0.13490	18.073	18M1W7D	
	12	1.4	QPSK	699.7-715.3	23.02	19.37	0.08650	1.1008	1M10G7D
			16QAM		22.09	18.44	0.06982	1.1069	1M11W7D
3		QPSK	700.5-714.5	22.96	19.31	0.08531	2.7211	2M72G7D	
		16QAM		22.07	18.42	0.06950	2.7191	2M72W7D	
5		QPSK	701.5-713.5	23.07	19.42	0.08750	4.5587	4M56G7D	
		16QAM		22.07	18.42	0.06950	4.5663	4M57W7D	
10		QPSK	704-711	23.11	19.46	0.08831	9.0160	9M02G7D	
		16QAM		22.13	18.48	0.07047	9.0228	9M02W7D	
17		5	QPSK	706.5-713.5	23.10	19.45	0.08810	4.5569	4M56G7D
			16QAM		22.26	18.61	0.07261	4.5565	4M56W7D
	10	QPSK	709-711	23.10	19.45	0.08810	9.0268	9M03G7D	
		16QAM		22.26	18.61	0.07261	9.0178	9M02W7D	

Shenzhen UnionTrust Quality and Technology Co., Ltd.

Address: 16/F, Block A, Building 6, Baoneng Science and Technology Park, Qingxiang Road No.1, Longhua New District, Shenzhen, China

Tel: +86-755-28230888

Fax: +86-755-28230886

E-mail: info@uttlab.com

<http://www.uttlab.com>

UTTR-RF-FCC4G-V1.0

1.4 DESCRIPTION OF SUPPORT UNITS

The EUT has been tested with associated equipment below.

1) Support Equipment

Description	Manufacturer	Model No.	Serial Number	Supplied by
-	-	-	-	-

2) Support Cable

Cable No.	Description	Connector	Length	Supplied by
1	Antenna Cable	SMA	0.30 Meter	UnionTrust

1.5 TEST LOCATION

Shenzhen UnionTrust Quality and Technology Co., Ltd.

Address: 16/F, Block A, Building 6, Baoneng Science and Technology Park, Qingxiang Road No.1, Longhua New District, Shenzhen, China 518109

Telephone: +86 (0) 755 2823 0888

Fax: +86 (0) 755 2823 0886

1.6 TEST FACILITY

The test facility is recognized, certified, or accredited by the following organizations:

CNAS-Lab Code: L9069

The measuring equipment utilized to perform the tests documented in this report has been calibrated once a year or in accordance with the manufacturer's recommendations, and is traceable under the ISO/IEC/EN 17025 to international or national standards. Equipment has been calibrated by accredited calibration laboratories.

A2LA-Lab Certificate No.: 4312.01

Shenzhen UnionTrust Quality and Technology Co., Ltd. has been accredited by A2LA for technical competence in the field of electrical testing, and proved to be in compliance with ISO/IEC 17025: 2005 General Requirements for the Competence of Testing and Calibration Laboratories and any additional program requirements in the identified field of testing.

ISED Wireless Device Testing Laboratories

CAB identifier: CN0032

FCC Accredited Lab.

Designation Number: CN1194

Test Firm Registration Number: 259480

1.7 DEVIATION FROM STANDARDS

None.

1.8 ABNORMALITIES FROM STANDARD CONDITIONS

None.

1.9 OTHER INFORMATION REQUESTED BY THE CUSTOMER

None.

1.10 MEASUREMENT UNCERTAINTY

Where relevant, the following measurement uncertainty levels have been estimated for tests performed on the Product as specified in CISPR 16-4-2. This uncertainty represents an expanded uncertainty expressed at approximately the 95% confidence level using a coverage factor of k=2.

No.	Item	Measurement Uncertainty
1	Conducted emission 9KHz-150KHz	±3.2 dB
2	Conducted emission 150KHz-30MHz	±2.7 dB
3	Radiated spurious emissions 30MHz-1GHz	± 4.9 dB
4	Radiated spurious emissions 1GHz-18GHz	± 4.8 dB
5	Radiated spurious emissions 18GHz-40GHz	± 5.1 dB
6	Occupied Bandwidth	± 1.86 %
7	DC Supply Voltages	± 0.68 %
8	Temperature	± 0.62 °C
9	Humidity	± 3.9 %
10	Conducted spurious emissions	± 2.7 dB
11	DC Supply Voltages	± 0.68 %
12	AC Supply Voltages	± 1.2 %
13	Radio Frequency	± 6.5 x 10 ⁻⁸
14	RF Power, Conducted	± 0.9 dB

2. TEST SUMMARY

FCC 47 CFR Part 24 Test Cases (Band 2)			
Test Item	Test Requirement	Test Method	Result
Equivalent Isotropic Radiated Power (EIRP)	FCC 47 CFR Part 2.1046(a) & FCC 47 CFR Part 24.232(c)	ANSI C63.26-2015 & KDB 971168 D01v03r01	PASS
Conducted Output Power	FCC 47 CFR Part 2.1046(a) & FCC 47 CFR Part 24.232(c)	ANSI C63.26-2015 & KDB 971168 D01v03r01	PASS
Peak-to-average ratio	FCC 47 CFR Part 24.232(d)	KDB 971168 D01v03r01	PASS
99%&26dB Bandwidth	FCC 47 CFR Part 2.1049(h) & FCC 47 CFR Part 24.238(b)	ANSI C63.26-2015 & KDB 971168 D01v03r01	PASS
Band Edge at antenna terminals	FCC 47 CFR Part 2.1051 & FCC 47 CFR Part 24.238(a)	ANSI C63.26-2015 & KDB 971168 D01v03r01	PASS
Spurious emissions at antenna terminals	FCC 47 CFR Part 2.1051 & FCC 47 CFR Part 24.238(a)(b)	ANSI C63.26-2015 & KDB 971168 D01v03r01	PASS
Field strength of spurious radiation	FCC 47 CFR Part 2.1053 & FCC 47 CFR Part 24.238(a)(b)	ANSI C63.26-2015 & KDB 971168 D01v03r01	PASS
Frequency stability	FCC 47 CFR Part 2.1055 & FCC 47 CFR Part 24.235	ANSI C63.26-2015 & KDB 971168 D01v03r01	PASS

FCC 47 CFR Part 27 Test Cases (LTE Band 4)			
Test Item	Test Requirement	Test Method	Result
Equivalent Isotropic Radiated Power (EIRP)	FCC 47 CFR Part 2.1046(a) & FCC 47 CFR Part 27.50(d)(4)	ANSI C63.26-2015 & KDB 971168 D01v03r01	PASS
Conducted Output Power	FCC 47 CFR Part 2.1046(a) & FCC 47 CFR Part 27.50(d)(4)	ANSI C63.26-2015 & KDB 971168 D01v03r01	PASS
Peak-to-average ratio	FCC 47 CFR Part 27.50(d)(5)	KDB 971168 D01v03r01	PASS
99%&26dB Bandwidth	FCC 47 CFR Part 2.1049(h) & FCC 47 CFR Part 27.53(h)	ANSI C63.26-2015 & KDB 971168 D01v03r01	PASS
Band Edge at antenna terminals	FCC 47 CFR Part 27.53(h)(1)	ANSI C63.26-2015 & KDB 971168 D01v03r01	PASS
Spurious emissions at antenna terminals	FCC 47 CFR Part 2.1051 & FCC 47 CFR Part 27.53(h)	ANSI C63.26-2015 & KDB 971168 D01v03r01	PASS
Field strength of spurious radiation	FCC 47 CFR Part 2.1053 & FCC 47 CFR Part 27.53(h)	ANSI C63.26-2015 & KDB 971168 D01v03r01	PASS
Frequency stability	FCC 47 CFR Part 2.1055 & FCC 47 CFR Part 27.54	ANSI C63.26-2015 & KDB 971168 D01v03r01	PASS

FCC 47 CFR Part 22 Test Cases (Band 5)			
Test Item	Test Requirement	Test Method	Result
Effective Radiated Power (ERP)	FCC 47 CFR Part 2.1046(a) & FCC 47 CFR Part 22.913(a)	ANSI C63.26-2015 & KDB 971168 D01v03r01	PASS
Conducted Output Power	FCC 47 CFR Part 2.1046(a) & FCC 47 CFR Part 22.913(a)	ANSI C63.26-2015 & KDB 971168 D01v03r01	PASS
Peak-to-average ratio	FCC 47 CFR Part 22.913(a)	KDB 971168 D01v03r01	PASS
99%&26dB Bandwidth	FCC 47 CFR Part 2.1049(h)	ANSI C63.26-2015 & KDB 971168 D01v03r01	PASS
Band Edge at antenna terminals	FCC 47 CFR Part 2.1051 & FCC 47 CFR Part 22.917(a)	ANSI C63.26-2015 & KDB 971168 D01v03r01	PASS
Spurious emissions at antenna terminals	FCC 47 CFR Part 2.1051 & FCC 47 CFR Part 22.917(a)(b)	ANSI C63.26-2015 & KDB 971168 D01v03r01	PASS
Field strength of spurious radiation	FCC 47 CFR Part 2.1053 & FCC 47 CFR Part 22.917(a)(b)	ANSI C63.26-2015 & KDB 971168 D01v03r01	PASS
Frequency stability	FCC 47 CFR Part 2.1055 &	ANSI C63.26-2015 &	PASS

Shenzhen UnionTrust Quality and Technology Co., Ltd.

Address: 16/F, Block A, Building 6, Baoneng Science and Technology Park, Qingxiang Road No.1, Longhua New District, Shenzhen, China

Tel: +86-755-28230888

Fax: +86-755-28230886

E-mail: info@uttlab.com

<http://www.uttlab.com>

UTTR-RF-FCC4G-V1.0

	FCC 47 CFR Part 22.355	KDB 971168 D01v03r01
--	------------------------	----------------------

FCC 47 CFR Part 27 Test Cases (LTE Band 7)			
Test Item	Test Requirement	Test Method	Result
Equivalent Isotropic Radiated Power (EIRP)	FCC 47 CFR Part 2.1046(a) & FCC 47 CFR Part 27.50(h)(2)	ANSI C63.26-2015 & KDB 971168 D01v03r01	PASS
Conducted Output Power	FCC 47 CFR Part 2.1046(a) & FCC 47 CFR Part 27.50(h)(2)	ANSI C63.26-2015 & KDB 971168 D01v03r01	PASS
Peak-to-average ratio	FCC 47 CFR Part 27.50(d)(5)	KDB 971168 D01v03r01	PASS
99%&26dB Bandwidth	FCC 47 CFR Part 2.1049(h)	ANSI C63.26-2015 & KDB 971168 D01v03r01	PASS
Band Edge at antenna terminals	FCC 47 CFR Part 27.53(m)(4)	ANSI C63.26-2015 & KDB 971168 D01v03r01	PASS
Spurious emissions at antenna terminals	FCC 47 CFR Part 2.1051 & FCC 47 CFR Part 27.53(m)(4)	ANSI C63.26-2015 & KDB 971168 D01v03r01	PASS
Field strength of spurious radiation	FCC 47 CFR Part 2.1053 & FCC 47 CFR Part 27.53(m)(4)	ANSI C63.26-2015 & KDB 971168 D01v03r01	PASS
Frequency stability	FCC 47 CFR Part 2.1055 & FCC 47 CFR Part 27.54	ANSI C63.26-2015 & KDB 971168 D01v03r01	PASS

FCC 47 CFR Part 27 Test Cases (LTE Band 12&17)			
Test Item	Test Requirement	Test Method	Result
Effective Radiated Power (ERP)	FCC 47 CFR Part 2.1046(a) & FCC 47 CFR Part 27.50(c)(10)	ANSI C63.26-2015 & KDB 971168 D01v03r01	PASS
Conducted Output Power	FCC 47 CFR Part 2.1046(a) & FCC 47 CFR Part 27.50(c)(10)	ANSI C63.26-2015 & KDB 971168 D01v03r01	PASS
Peak-to-average ratio	FCC 47 CFR Part 27.50(d)(5)	KDB 971168 D01v03r01	PASS
99%&26dB Bandwidth	FCC 47 CFR Part 2.1049(h) FCC 47 CFR Part 27.53(g)	ANSI C63.26-2015 & KDB 971168 D01v03r01	PASS
Band Edge at antenna terminals	FCC 47 CFR Part 27.53(g)	ANSI C63.26-2015 & KDB 971168 D01v03r01	PASS
Spurious emissions at antenna terminals	FCC 47 CFR Part 2.1051 & FCC 47 CFR Part 27.53(g)	ANSI C63.26-2015 & KDB 971168 D01v03r01	PASS
Field strength of spurious radiation	FCC 47 CFR Part 2.1053 & FCC 47 CFR Part 27.53(g)	ANSI C63.26-2015 & KDB 971168 D01v03r01	PASS
Frequency stability	FCC 47 CFR Part 2.1055 & FCC 47 CFR Part 27.54	ANSI C63.26-2015 & KDB 971168 D01v03r01	PASS

3. EQUIPMENT LIST

Radiated Emission Test Equipment List						
Used	Equipment	Manufacturer	Model No.	Serial Number	Cal. date (mm dd, yyyy)	Cal. Due date (mm dd, yyyy)
<input checked="" type="checkbox"/>	3M Chamber & Accessory Equipment	ETS-LINDGREN	3M	N/A	Dec. 03, 2018	Dec. 03, 2021
<input checked="" type="checkbox"/>	Receiver	R&S	ESIB26	100114	Nov. 24, 2019	Nov. 23, 2020
<input type="checkbox"/>	Loop Antenna	ETS-LINDGREN	6502	00202525	Nov. 24, 2019	Nov. 23, 2020
<input checked="" type="checkbox"/>	Broadband Antenna	ETS-LINDGREN	3142E	00201566	Nov. 16, 2019	Nov. 15, 2020
<input checked="" type="checkbox"/>	6dB Attenuator	Talent	RA6A5-N-18	18103001	Nov. 16, 2019	Nov. 15, 2020
<input checked="" type="checkbox"/>	Preamplifier	HP	8447F	2805A02960	Nov. 16, 2019	Nov. 15, 2020
<input type="checkbox"/>	Broadband Antenna (Pre-amplifier)	ETS-LINDGREN	3142E-PA	00201891	Nov. 24, 2019	Nov. 23, 2020
<input type="checkbox"/>	6dB Attenuator	Talent	RA6A5-N-18	18103002	Nov. 24, 2019	Nov. 23, 2020
<input checked="" type="checkbox"/>	Horn Antenna	ETS-LINDGREN	3117	00164202	Nov. 24, 2019	Nov. 23, 2020
<input checked="" type="checkbox"/>	Pre-amplifier	ETS-LINDGREN	118385	00201874	Jan. 10, 2020	Jan. 10, 2021
<input type="checkbox"/>	Horn Antenna	ETS-LINDGREN	3116C	00200180	Jun. 19, 2020	Jun. 18, 2021
<input checked="" type="checkbox"/>	Horn Antenna (Pre-amplifier)	ETS-LINDGREN	3116C-PA	00202652	Nov. 16, 2019	Nov. 15, 2020
<input checked="" type="checkbox"/>	Multi device Controller	ETS-LINDGREN	7006-001	00160105	N/A	N/A
<input checked="" type="checkbox"/>	Test Software	Audix	e3	Software Version: 9.160323		

RF Test Equipment List						
Used	Equipment	Manufacturer	Model No.	Serial Number	Cal. date (mm dd, yyyy)	Cal. Due date (mm dd, yyyy)
<input checked="" type="checkbox"/>	Receiver	R&S	ESR7	1316.3003K07-101181-K3	Nov. 24, 2019	Nov. 23, 2020
<input checked="" type="checkbox"/>	EXA Spectrum Analyzer	KEYSIGHT	N9010A	MY51440197	Nov. 24, 2019	Nov. 23, 2020
<input checked="" type="checkbox"/>	Wideband Radio Communication Tester	R&S	CMW500	120932	Jul. 19, 2019	Jul. 19, 2020
<input type="checkbox"/>	Wideband Radio Communication Tester	R&S	CMW500	119583	Jul. 31, 2019	Jul. 31, 2020
<input checked="" type="checkbox"/>	DC Source	KIKUSUI	PWR400L	LK003024	Sep. 09, 2019	Sep. 08, 2020
<input type="checkbox"/>	Temp & Humidity chamber	Espec	GL(U)04K A(W)	16921H201P3	Sep. 09, 2019	Sep. 08, 2020
<input checked="" type="checkbox"/>	Temp & Humidity chamber	Votisch	VT4002	58566133290020	May 11, 2020	May 10, 2021

4. TEST CONFIGURATION

4.1 ENVIRONMENTAL CONDITIONS FOR TESTING

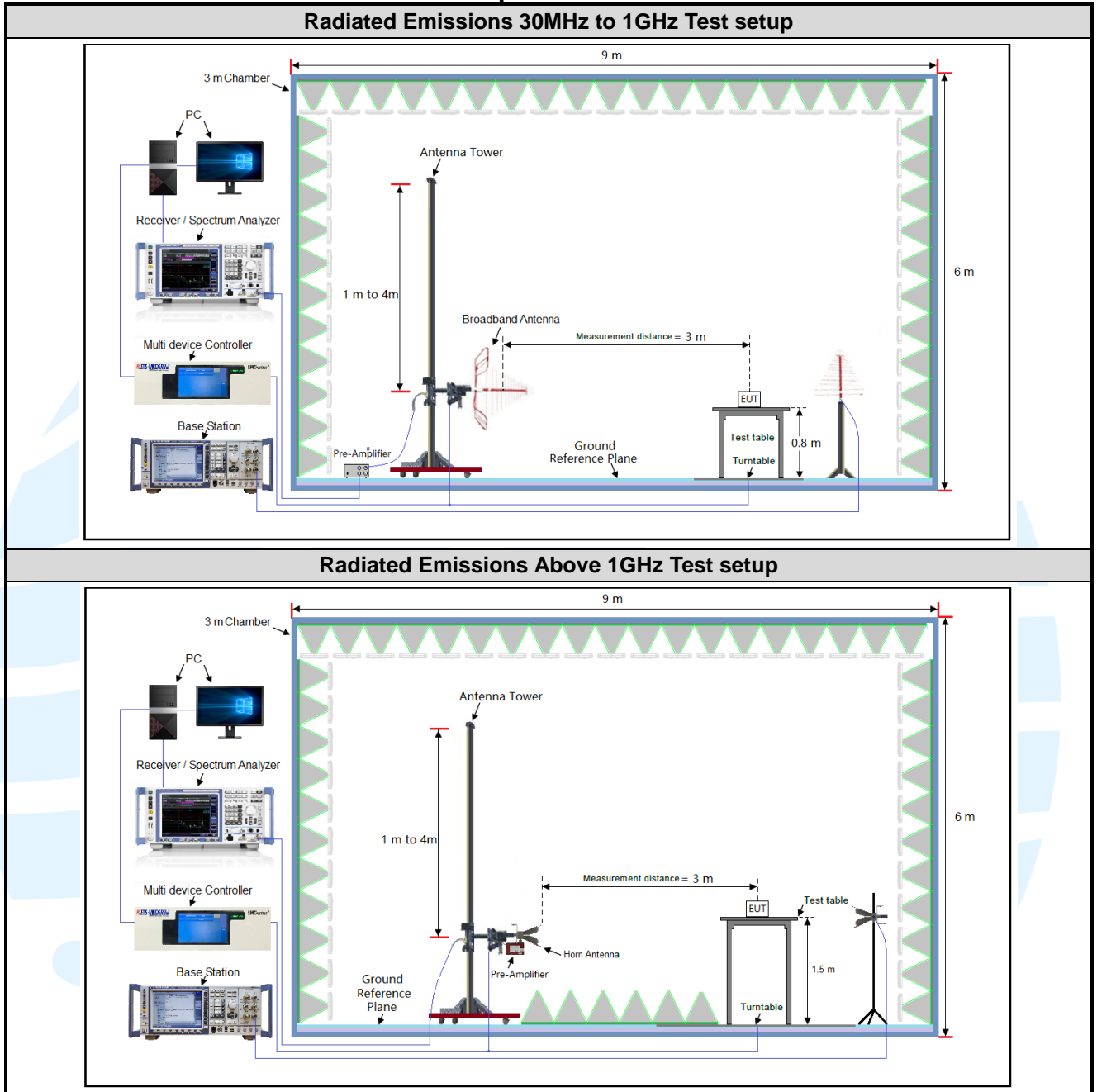
Test Environment	Selected Values During Tests		
Test Condition	Ambient		
	Temperature (°C)	Voltage (V)	Relative Humidity (%)
TN/VN	+15 to +35	3.85	20 to 75
TL/VL	-30	3.6	20 to 75
TH/VL	+55	3.6	20 to 75
TL/VH	-30	4.3	20 to 75
TH/VH	+55	4.3	20 to 75

Remark:

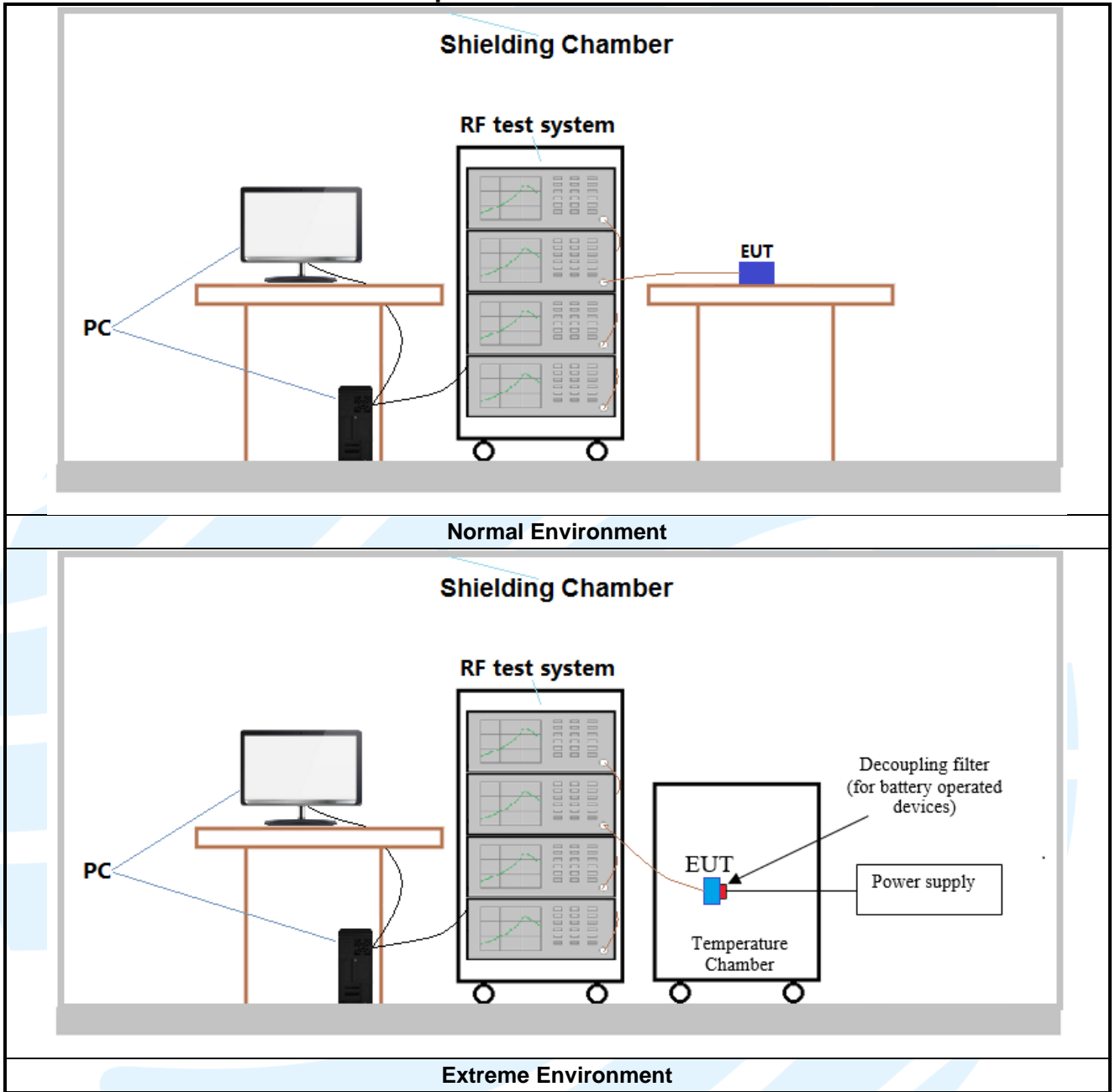
- 1) The EUT just work in such extreme temperature of -30 °C to +55 °C and the extreme voltage of 3.6 V to 4.3 V, so here the EUT is tested in the temperature of -30 °C to +55 °C and the voltage of 3.6 V to 4.3 V.
- 2) VN: Normal Voltage; TN: Normal Temperature;
 TL: Low Extreme Test Temperature; TH: High Extreme Test Temperature;
 VL: Low Extreme Test Voltage; VH: High Extreme Test Voltage.

4.2 TEST SETUP

4.2.1 For Radiated Emissions test setup



4.2.2 For Conducted RF test setup



4.3 TEST CHANNELS

Band	Test Frequency ID	Bandwidth (MHz)	Number [UL]	Frequency of Uplink (MHz)
LTE Band 2 TX: 1850-1910MHz	Low Range	1.4	18607	1850.7
		3	18615	1851.5
		5	18625	1852.5
		10	18650	1855
		15	18675	1857.5
		20	18700	1860
	Middle Range	1.4/3/5/10/15/20	18900	1880
	High Range	1.4	19193	1909.3
		3	19185	1908.5
		5	19175	1907.5
		10	19150	1905
		15	19125	1902.5
		20	19100	1900
	LTE Band 4 TX: 1710-1755MHz	Low Range	1.4	19957
3			19965	1711.5
5			19975	1712.5
10			20000	1715
15			20025	1717.5
20			20050	1720
Middle Range		1.4/3/5/10/ 15/20	20175	1732.5
High Range		1.4	20393	1754.3
		3	20385	1753.5
		5	20375	1752.5
		10	20350	1750
		15	20325	1747.5
		20	20300	1745
LTE band 5 TX: 824-849MHz		Low Range	1.4	20407
	3		20415	825.5
	5		20425	826.5
	10		20450	829
	Middle Range	1.4/3/5/10	20525	836.5
	High Range	1.4	20643	848.3
		3	20635	847.5
		5	20625	846.5
		10	20600	844
	LTE Band 7 TX: 2500-2570MHz	Low Range	5	20775
10			20800	2505
15			20825	2507.5
20			20850	2510
Middle Range		5/10/15/20	21100	2535
High Range		5	21425	2567.5
		10	21400	2565
		15	21375	2562.5

Shenzhen UnionTrust Quality and Technology Co., Ltd.

Address: 16/F, Block A, Building 6, Baoneng Science and Technology Park, Qingxiang Road No.1, Longhua New District, Shenzhen, China

Tel: +86-755-28230888

Fax: +86-755-28230886

E-mail: info@uttlab.com

<http://www.uttlab.com>

UTTR-RF-FCC4G-V1.0

		20	21350	2560
LTE Band 12 TX: 699-716MHz	Low Range	1.4	23017	699.7
		3	23025	700.5
		5	23035	701.5
		10	23060	704
	Middle Range	1.4/3/5/10	23095	707.5
	High Range	1.4	23173	715.3
		3	23165	714.5
		5	23155	713.5
10		23130	711	
LTE Band 17 TX: 704-716MHz	Low Range	5	23755	706.5
		10	23780	709
	Middle Range	5/10	23790	710
	High Range	5	23825	713.5
		10	23800	711

Shenzhen UnionTrust Quality and Technology Co., Ltd.

Address: 16/F, Block A, Building 6, Baoneng Science and Technology Park, Qingxiang Road No.1, Longhua New District, Shenzhen, China

Tel: +86-755-28230888

Fax: +86-755-28230886

E-mail: info@uttlab.com

<http://www.uttlab.com>

UTTR-RF-FCC4G-V1.0

4.4 SYSTEM TEST CONFIGURATION

For emissions testing, the equipment under test (EUT) setup to transmit continuously to simplify the measurement methodology. Care was taken to ensure proper power supply voltages during testing. During testing, radiated emission were performed with the EUT set to transmit at the channel with highest output power as worst-case scenario. It was powered by a 3.8V battery. Only the worst case data were recorded in this test report.

Pre-Scan has been conducted to determine the worst-case mode from all possible combinations between available modulations, data rates, X/Y/Z axis, and antenna ports. The worst case was found when positioned as the table below.

Band	Mode	Antenna Port	Worst-case axis positioning
LTE Band 2	1TX	Chain 0	Y axis
LTE Band 4	1TX	Chain 0	Y axis
LTE Band 5	1TX	Chain 0	Y axis
LTE Band 7	1TX	Chain 0	Y axis
LTE Band 12	1TX	Chain 0	Y axis
LTE Band 17	1TX	Chain 0	Y axis

All readings are extrapolated back to the equivalent three meter reading using inverse scaling with distance. Analyzer resolution is 100 kHz or greater for frequencies below 1000MHz. The resolution is 1 MHz or greater for frequencies above 1000MHz. The spurious emissions more than 20 dB below the permissible value are not reported.

Radiated emission measurement were performed from the lowest radio frequency signal generated in the device which is greater than 9 kHz to the tenth harmonic of the highest fundamental frequency or to 40 GHz, whichever is lower.

4.5 PRE-SCAN

Pre-scan under all rate at lowest middle and highest channel, find the transmitter power as below.

4.5.1 LTE Band 2

LTE Band 2 Maximum Average Power (dBm)										
Modulation	RB		Test Channel			RB		Test Channel		
	Size	Offset	Low	Mid	High	Size	Offset	Low	Mid	High
Channel Bandwidth: 1.4 MHz					Channel Bandwidth: 3 MHz					
QPSK	1	0	23.33	23.52	23.03	1	0	23.31	23.50	23.10
	1	2	23.24	23.34	23.11	1	7	23.32	23.27	23.03
	1	5	23.23	23.25	23.24	1	14	23.26	23.14	23.31
	3	0	23.22	23.20	23.20	8	0	22.21	22.20	22.16
	3	1	23.07	23.27	22.93	8	3	22.12	22.30	21.94
	3	3	23.03	23.29	23.26	8	7	22.02	22.29	22.35
	6	0	22.13	22.23	22.07	15	0	22.20	22.31	22.08
16QAM	1	0	22.53	22.20	21.99	1	0	22.58	22.20	22.11
	1	2	22.49	22.26	22.04	1	7	22.38	22.16	21.95
	1	5	22.43	21.76	22.14	1	14	22.29	21.93	22.13
	3	0	22.28	22.34	22.16	8	0	21.15	21.19	21.27
	3	1	22.19	22.32	22.19	8	3	21.22	21.25	21.33
	3	3	22.22	22.26	22.18	8	7	21.31	21.26	21.16
	6	0	21.36	21.26	21.28	15	0	21.29	21.31	21.22
Channel Bandwidth: 5 MHz					Channel Bandwidth: 10 MHz					
QPSK	1	0	23.37	23.53	23.12	1	0	23.43	23.41	23.10
	1	12	23.17	23.33	23.04	1	24	23.28	23.44	23.12
	1	24	23.33	23.22	23.36	1	49	23.25	23.26	23.31
	12	0	22.16	22.29	22.12	25	0	22.20	22.30	22.28
	12	6	21.99	22.28	22.08	25	12	22.12	22.27	22.00
	12	13	22.14	22.31	22.34	25	25	22.00	22.15	22.21
	25	0	22.21	22.26	22.21	50	0	22.20	22.24	22.20
16QAM	1	0	22.67	22.13	21.94	1	0	22.68	22.17	22.11
	1	12	22.54	22.33	21.97	1	24	22.45	22.14	21.92
	1	24	22.33	21.87	22.05	1	49	22.43	21.87	22.03
	12	0	21.16	21.31	21.23	25	0	21.16	21.18	21.26
	12	6	21.09	21.40	21.35	25	12	21.08	21.24	21.30
	12	13	21.18	21.34	21.29	25	25	21.23	21.28	21.13
	25	0	21.27	21.43	21.31	50	0	21.33	21.29	21.19

LTE Band 2 Maximum Average Power (dBm)										
Modulation	RB		Test Channel			RB		Test Channel		
	Size	Offset	Low	Mid	High	Size	Offset	Low	Mid	High
Channel Bandwidth: 15 MHz						Channel Bandwidth: 20 MHz				
QPSK	1	0	23.45	23.39	23.12	1	0	23.48	23.53	23.17
	1	37	23.14	23.40	22.95	1	50	23.34	23.45	23.14
	1	74	23.32	23.17	23.33	1	99	23.39	23.32	23.40
	37	0	22.22	22.27	22.17	50	0	22.26	22.35	22.30
	37	19	22.11	22.28	22.06	50	25	22.17	22.44	22.12
	37	39	22.10	22.27	22.31	50	50	22.17	22.32	22.36
	75	0	22.17	22.22	22.09	100	0	22.27	22.33	22.25
16QAM	1	0	22.63	22.15	22.03	1	0	22.70	22.24	22.13
	1	37	22.53	22.33	21.98	1	50	22.54	22.34	22.10
	1	74	22.40	21.82	22.16	1	99	22.48	21.96	22.22
	37	0	21.11	21.31	21.24	50	0	21.29	21.36	21.32
	37	19	21.21	21.35	21.29	50	25	21.23	21.44	21.36
	37	39	21.29	21.30	21.28	50	50	21.33	21.37	21.30
	75	0	21.22	21.36	21.18	100	0	21.38	21.44	21.32

4.5.2 LTE Band 4

LTE Band 4 Maximum Average Power (dBm)										
Modulation	RB		Test Channel			RB		Test Channel		
	Size	Offset	Low	Mid	High	Size	Offset	Low	Mid	High
Channel Bandwidth: 1.4 MHz						Channel Bandwidth: 3 MHz				
QPSK	1	0	23.03	22.92	22.57	1	0	22.99	23.01	22.70
	1	2	22.93	22.92	22.70	1	7	23.05	22.86	22.71
	1	5	23.02	22.75	23.11	1	14	23.01	22.66	23.00
	3	0	22.72	22.78	22.86	8	0	21.80	21.80	21.80
	3	1	22.80	22.78	22.77	8	3	21.73	21.80	21.91
	3	3	22.95	22.69	23.03	8	7	21.85	21.71	21.98
	6	0	21.85	21.83	21.88	15	0	21.94	21.77	21.86
16QAM	1	0	21.60	22.12	22.27	1	0	21.67	22.21	22.29
	1	2	22.17	21.78	22.25	1	7	22.29	21.65	22.32
	1	5	22.30	22.42	21.46	1	14	22.26	22.43	21.45
	3	0	21.97	21.90	22.00	8	0	20.91	20.90	21.00
	3	1	22.00	21.85	21.95	8	3	21.01	20.82	21.06
	3	3	22.06	21.87	21.92	8	7	21.04	20.86	21.03
	6	0	20.84	20.85	20.93	15	0	21.00	20.88	20.96

LTE Band 4 Maximum Average Power (dBm)										
Modulation	RB		Test Channel			RB		Test Channel		
	Size	Offset	Low	Mid	High	Size	Offset	Low	Mid	High
Channel Bandwidth: 5 MHz					Channel Bandwidth: 10 MHz					
QPSK	1	0	23.03	22.89	22.62	1	0	23.03	22.89	22.59
	1	12	23.03	22.86	22.68	1	24	22.94	22.90	22.70
	1	24	23.06	22.82	23.10	1	49	23.06	22.65	23.02
	12	0	21.91	21.75	21.79	25	0	21.78	21.77	21.93
	12	6	21.68	21.74	21.88	25	12	21.68	21.69	21.89
	12	13	21.86	21.87	21.94	25	25	21.96	21.73	21.92
	25	0	21.90	21.77	21.93	50	0	21.85	21.69	21.89
16QAM	1	0	21.71	22.21	22.26	1	0	21.69	22.16	22.33
	1	12	22.13	21.83	22.26	1	24	22.16	21.68	22.38
	1	24	22.33	22.45	21.46	1	49	22.20	22.35	21.40
	12	0	20.93	20.97	21.15	25	0	20.97	20.95	21.14
	12	6	20.90	20.88	20.98	25	12	20.85	20.84	21.06
	12	13	21.04	20.91	21.06	25	25	21.04	20.91	21.01
	25	0	21.00	20.82	20.99	50	0	20.97	20.84	20.96
Channel Bandwidth: 15 MHz					Channel Bandwidth: 20 MHz					
QPSK	1	0	23.07	23.00	22.56	1	0	23.11	23.05	22.73
	1	37	22.88	22.97	22.77	1	50	23.05	23.02	22.81
	1	74	22.88	22.77	23.15	1	99	23.08	22.84	23.17
	37	0	21.73	21.71	21.90	50	0	21.91	21.89	21.93
	37	19	21.79	21.80	21.90	50	25	21.86	21.81	21.91
	37	39	21.83	21.78	22.01	50	50	21.97	21.88	22.04
	75	0	21.87	21.75	21.90	100	0	21.96	21.88	21.95
16QAM	1	0	21.59	22.18	22.29	1	0	21.76	22.22	22.39
	1	37	22.31	21.68	22.31	1	50	22.31	21.83	22.43
	1	74	22.29	22.34	21.55	1	99	22.37	22.48	21.58
	37	0	21.05	20.90	21.02	50	0	21.06	21.03	21.18
	37	19	20.90	20.81	21.06	50	25	21.05	20.99	21.11
	37	39	20.93	20.93	20.93	50	50	21.12	20.99	21.07
	75	0	20.82	20.93	20.83	100	0	21.01	20.94	20.99

4.5.3 LTE Band 5

LTE Band 5 Maximum Average Power (dBm)											
Modulation	RB		Test Channel			RB		Test Channel			
	Size	Offset	Low	Mid	High	Size	Offset	Low	Mid	High	
Channel Bandwidth: 1.4 MHz						Channel Bandwidth: 3 MHz					
QPSK	1	0	22.79	22.77	22.71	1	0	22.80	22.80	22.76	
	1	2	22.71	22.71	22.66	1	7	22.70	22.85	22.71	
	1	5	22.69	22.82	22.94	1	14	22.86	22.91	22.80	
	3	0	22.84	22.73	22.93	8	0	21.86	21.89	21.92	
	3	1	22.87	22.80	22.70	8	3	21.81	21.81	21.73	
	3	3	22.82	22.78	22.82	8	7	21.89	21.82	21.90	
16QAM	6	0	21.85	21.63	21.88	15	0	21.89	21.70	21.88	
	1	0	22.29	22.29	21.82	1	0	22.20	22.21	21.79	
	1	2	22.23	22.11	21.90	1	7	22.34	22.03	21.82	
	1	5	22.22	22.03	21.95	1	14	22.19	22.01	22.12	
	3	0	22.21	22.06	21.68	8	0	21.18	21.07	20.73	
	3	1	22.28	22.13	21.91	8	3	21.29	21.09	20.94	
Channel Bandwidth: 5 MHz	3	3	22.17	21.86	21.97	8	7	21.17	20.85	21.06	
	6	0	21.10	21.00	21.08	15	0	21.06	20.95	21.07	
	QPSK	1	0	22.86	22.76	22.79	1	0	22.90	22.90	22.87
		1	12	22.69	22.89	22.79	1	24	22.88	22.90	22.82
		1	24	22.68	22.95	22.89	1	49	22.88	22.97	22.96
		12	0	21.74	21.78	21.92	25	0	21.88	21.89	21.93
12		6	21.77	21.75	21.68	25	12	21.90	21.95	21.85	
12		13	21.88	21.78	21.86	25	25	21.99	21.87	21.90	
16QAM	25	0	21.96	21.74	21.84	50	0	21.99	21.82	21.94	
	1	0	22.20	22.35	21.74	1	0	22.32	22.38	21.92	
	1	12	22.16	21.97	21.89	1	24	22.34	22.12	21.94	
	1	24	22.29	22.00	22.08	1	49	22.35	22.06	22.15	
	12	0	21.17	21.08	20.67	25	0	21.25	21.15	20.82	
	12	6	21.20	21.02	20.86	25	12	21.33	21.16	20.99	
Channel Bandwidth: 10 MHz	12	13	21.17	20.87	21.08	25	25	21.19	20.93	21.16	
	25	0	21.02	21.01	20.95	50	0	21.17	21.08	21.10	

4.5.4 LTE Band 7

LTE Band 7 Maximum Average Power (dBm)											
Modulation	RB		Test Channel			RB		Test Channel			
	Size	Offset	Low	Mid	High	Size	Offset	Low	Mid	High	
Channel Bandwidth: 5 MHz						Channel Bandwidth: 10 MHz					
QPSK	1	0	21.56	21.84	21.91	1	0	21.66	22.00	21.98	
	1	12	22.15	21.95	21.39	1	24	22.14	21.83	21.46	
	1	24	22.50	22.65	21.36	1	49	22.39	22.75	21.28	
	12	0	21.75	21.70	21.57	25	0	21.70	21.77	21.65	
	12	6	21.87	21.67	21.39	25	12	21.90	21.67	21.48	
	12	13	21.88	21.72	21.29	25	25	21.85	21.83	21.34	
16QAM	25	0	21.81	21.82	21.44	50	0	21.88	21.79	21.53	
	1	0	21.92	22.08	22.10	1	0	21.76	22.06	22.18	
	1	12	22.28	21.64	21.71	1	24	22.25	21.61	21.67	
	1	24	22.51	22.20	21.89	1	49	22.56	22.02	21.89	
	12	0	20.92	20.97	20.93	25	0	21.00	20.88	20.90	
	12	6	20.91	21.05	20.92	25	12	20.87	20.99	20.97	
Channel Bandwidth: 15 MHz	12	13	20.89	20.91	21.00	25	25	20.93	21.05	20.92	
	25	0	20.99	20.80	20.86	50	0	20.93	20.82	20.89	
	QPSK	1	0	21.65	21.89	21.86	1	0	21.69	22.02	22.06
		1	37	22.01	22.00	21.44	1	50	22.19	22.01	21.55
		1	74	22.51	22.78	21.39	1	99	22.57	22.83	21.40
		37	0	21.81	21.77	21.50	50	0	21.88	21.90	21.69
37		19	21.92	21.75	21.45	50	25	21.94	21.85	21.54	
37		39	21.83	21.78	21.41	50	50	21.95	21.86	21.46	
16QAM	75	0	21.87	21.75	21.54	100	0	21.91	21.92	21.55	
	1	0	21.83	22.21	22.10	1	0	21.95	22.21	22.26	
	1	37	22.27	21.50	21.81	1	50	22.38	21.68	21.84	
	1	74	22.48	22.09	21.84	1	99	22.60	22.21	21.90	
	37	0	20.98	20.99	20.98	50	0	21.08	21.05	21.08	
	37	19	20.92	20.97	20.91	50	25	21.06	21.07	21.07	
Channel Bandwidth: 20 MHz	37	39	21.02	20.92	20.95	50	50	21.08	21.07	21.03	
	75	0	21.04	20.87	20.94	100	0	21.04	21.00	20.99	

4.5.5 LTE Band 12

LTE Band 12 Maximum Average Power (dBm)											
Modulation	RB		Test Channel			RB		Test Channel			
	Size	Offset	Low	Mid	High	Size	Offset	Low	Mid	High	
Channel Bandwidth: 1.4 MHz						Channel Bandwidth: 3 MHz					
QPSK	1	0	22.79	22.70	23.02	1	0	22.77	22.64	22.91	
	1	2	22.82	22.85	22.83	1	7	22.73	22.89	22.72	
	1	5	22.90	22.83	22.86	1	14	22.93	22.89	22.96	
	3	0	22.55	22.75	22.64	8	0	21.56	21.85	21.81	
	3	1	22.90	22.75	22.56	8	3	21.86	21.76	21.70	
	3	3	22.96	22.66	22.97	8	7	21.86	21.56	21.95	
16QAM	6	0	21.80	21.63	21.72	15	0	21.85	21.68	21.75	
	1	0	21.83	21.90	22.02	1	0	21.86	21.94	22.02	
	1	2	22.04	21.80	21.85	1	7	22.07	21.89	21.87	
	1	5	22.09	21.84	21.73	1	14	22.01	21.95	21.91	
	3	0	21.56	21.94	22.07	8	0	20.62	20.85	20.97	
	3	1	21.86	21.87	21.88	8	3	20.93	20.87	20.89	
QPSK	3	3	21.85	21.68	22.01	8	7	20.87	20.60	21.08	
	6	0	20.90	20.82	20.85	15	0	20.91	20.81	20.71	
	Channel Bandwidth: 5 MHz					Channel Bandwidth: 10 MHz					
	QPSK	1	0	22.77	22.64	23.07	1	0	22.83	22.80	23.11
		1	12	22.76	22.90	22.81	1	24	22.88	22.95	22.89
		1	24	22.81	22.78	22.98	1	49	22.98	22.98	23.01
12		0	21.66	21.81	21.66	25	0	21.68	21.87	21.82	
12		6	21.81	21.69	21.54	25	12	21.95	21.80	21.72	
12		13	21.80	21.71	21.83	25	25	22.00	21.75	21.97	
16QAM	25	0	21.93	21.71	21.62	50	0	21.94	21.75	21.75	
	1	0	21.93	21.85	22.02	1	0	22.00	21.97	22.11	
	1	12	22.07	21.81	21.87	1	24	22.13	21.91	21.91	
	1	24	21.95	21.82	21.76	1	49	22.09	21.98	21.92	
	12	0	20.61	20.92	20.95	25	0	20.76	21.00	21.09	
	12	6	20.90	20.94	20.96	25	12	20.99	21.01	20.97	
QPSK	12	13	20.86	20.50	21.05	25	25	21.03	20.70	21.08	
	25	0	20.81	20.79	20.78	50	0	20.93	20.97	20.87	

4.5.6 LTE Band 17

LTE Band 17 Maximum Average Power (dBm)										
Modulation	RB		Test Channel			RB		Test Channel		
	Size	Offset	Low	Mid	High	Size	Offset	Low	Mid	High
Channel Bandwidth: 5 MHz						Channel Bandwidth: 10 MHz				
QPSK	1	0	22.78	23.00	23.10	1	0	22.92	23.03	23.10
	1	12	22.88	22.72	22.91	1	24	23.02	22.87	22.98
	1	24	22.79	22.85	22.99	1	49	22.99	22.86	23.01
	12	0	21.79	21.81	21.64	25	0	21.88	21.81	21.82
	12	6	21.57	21.71	21.58	25	12	21.72	21.76	21.68
	12	13	21.69	21.69	21.87	25	25	21.78	21.77	21.90
	25	0	21.64	21.70	21.73	50	0	21.73	21.78	21.79
16QAM	1	0	21.98	21.91	21.94	1	0	22.07	21.92	22.08
	1	12	21.83	21.72	21.82	1	24	21.88	21.88	21.87
	1	24	22.00	21.93	22.26	1	49	22.09	22.11	22.26
	12	0	20.80	21.11	20.75	25	0	20.93	21.11	20.81
	12	6	20.99	20.63	20.73	25	12	21.03	20.65	20.90
	12	13	20.92	21.01	21.02	25	25	20.98	21.02	21.04
	25	0	20.92	20.71	20.75	50	0	21.02	20.78	20.79

Pre-scan all bandwidth and RB, find worse case mode are chosen to the report, the LTE worse case mode applicability and tested channel detail as below:

Item	Band	Bandwidth(MHz)						Modulation			RB			Test Channel			
		1.4	3	5	10	15	20	QPSK	16QAM	64QAM	1	Half	Full	L	M	H	
ERP/EIRP	2	<input checked="" type="checkbox"/>	<input checked="" type="checkbox"/>	<input checked="" type="checkbox"/>	<input checked="" type="checkbox"/>	<input checked="" type="checkbox"/>	<input checked="" type="checkbox"/>	<input checked="" type="checkbox"/>	<input checked="" type="checkbox"/>	<input checked="" type="checkbox"/>	<input checked="" type="checkbox"/>	<input checked="" type="checkbox"/>	<input type="checkbox"/>	<input type="checkbox"/>	<input checked="" type="checkbox"/>	<input checked="" type="checkbox"/>	<input checked="" type="checkbox"/>
	4	<input checked="" type="checkbox"/>	<input checked="" type="checkbox"/>	<input checked="" type="checkbox"/>	<input checked="" type="checkbox"/>	<input checked="" type="checkbox"/>	<input checked="" type="checkbox"/>	<input checked="" type="checkbox"/>	<input checked="" type="checkbox"/>	<input checked="" type="checkbox"/>	<input checked="" type="checkbox"/>	<input checked="" type="checkbox"/>	<input type="checkbox"/>	<input type="checkbox"/>	<input checked="" type="checkbox"/>	<input checked="" type="checkbox"/>	<input checked="" type="checkbox"/>
	5	<input checked="" type="checkbox"/>	<input checked="" type="checkbox"/>	<input checked="" type="checkbox"/>	<input checked="" type="checkbox"/>	--	--	<input checked="" type="checkbox"/>	<input checked="" type="checkbox"/>	<input checked="" type="checkbox"/>	<input checked="" type="checkbox"/>	<input checked="" type="checkbox"/>	<input type="checkbox"/>	<input type="checkbox"/>	<input checked="" type="checkbox"/>	<input checked="" type="checkbox"/>	<input checked="" type="checkbox"/>
	7	-	-	<input checked="" type="checkbox"/>	<input checked="" type="checkbox"/>	<input checked="" type="checkbox"/>	<input checked="" type="checkbox"/>	<input checked="" type="checkbox"/>	<input checked="" type="checkbox"/>	<input checked="" type="checkbox"/>	<input checked="" type="checkbox"/>	<input checked="" type="checkbox"/>	<input type="checkbox"/>	<input type="checkbox"/>	<input checked="" type="checkbox"/>	<input checked="" type="checkbox"/>	<input checked="" type="checkbox"/>
	12	<input checked="" type="checkbox"/>	<input checked="" type="checkbox"/>	<input checked="" type="checkbox"/>	<input checked="" type="checkbox"/>	-	-	<input checked="" type="checkbox"/>	<input checked="" type="checkbox"/>	<input checked="" type="checkbox"/>	<input checked="" type="checkbox"/>	<input checked="" type="checkbox"/>	<input type="checkbox"/>	<input type="checkbox"/>	<input checked="" type="checkbox"/>	<input checked="" type="checkbox"/>	<input checked="" type="checkbox"/>
	17	-	-	<input checked="" type="checkbox"/>	<input checked="" type="checkbox"/>	-	-	<input checked="" type="checkbox"/>	<input checked="" type="checkbox"/>	<input checked="" type="checkbox"/>	<input checked="" type="checkbox"/>	<input checked="" type="checkbox"/>	<input type="checkbox"/>	<input type="checkbox"/>	<input checked="" type="checkbox"/>	<input checked="" type="checkbox"/>	<input checked="" type="checkbox"/>
Conducted output power	2	<input checked="" type="checkbox"/>	<input checked="" type="checkbox"/>	<input checked="" type="checkbox"/>	<input checked="" type="checkbox"/>	<input checked="" type="checkbox"/>	<input checked="" type="checkbox"/>	<input checked="" type="checkbox"/>	<input checked="" type="checkbox"/>	<input checked="" type="checkbox"/>	<input checked="" type="checkbox"/>	<input checked="" type="checkbox"/>	<input checked="" type="checkbox"/>	<input checked="" type="checkbox"/>	<input checked="" type="checkbox"/>	<input checked="" type="checkbox"/>	<input checked="" type="checkbox"/>
	4	<input checked="" type="checkbox"/>	<input checked="" type="checkbox"/>	<input checked="" type="checkbox"/>	<input checked="" type="checkbox"/>	<input checked="" type="checkbox"/>	<input checked="" type="checkbox"/>	<input checked="" type="checkbox"/>	<input checked="" type="checkbox"/>	<input checked="" type="checkbox"/>	<input checked="" type="checkbox"/>	<input checked="" type="checkbox"/>	<input checked="" type="checkbox"/>	<input checked="" type="checkbox"/>	<input checked="" type="checkbox"/>	<input checked="" type="checkbox"/>	<input checked="" type="checkbox"/>
	5	<input checked="" type="checkbox"/>	<input checked="" type="checkbox"/>	<input checked="" type="checkbox"/>	<input checked="" type="checkbox"/>	--	--	<input checked="" type="checkbox"/>	<input checked="" type="checkbox"/>	<input checked="" type="checkbox"/>	<input checked="" type="checkbox"/>	<input checked="" type="checkbox"/>	<input checked="" type="checkbox"/>	<input checked="" type="checkbox"/>	<input checked="" type="checkbox"/>	<input checked="" type="checkbox"/>	<input checked="" type="checkbox"/>
	7	-	-	<input checked="" type="checkbox"/>	<input checked="" type="checkbox"/>	<input checked="" type="checkbox"/>	<input checked="" type="checkbox"/>	<input checked="" type="checkbox"/>	<input checked="" type="checkbox"/>	<input checked="" type="checkbox"/>	<input checked="" type="checkbox"/>	<input checked="" type="checkbox"/>	<input checked="" type="checkbox"/>	<input checked="" type="checkbox"/>	<input checked="" type="checkbox"/>	<input checked="" type="checkbox"/>	<input checked="" type="checkbox"/>
	12	<input checked="" type="checkbox"/>	<input checked="" type="checkbox"/>	<input checked="" type="checkbox"/>	<input checked="" type="checkbox"/>	-	-	<input checked="" type="checkbox"/>	<input checked="" type="checkbox"/>	<input checked="" type="checkbox"/>	<input checked="" type="checkbox"/>	<input checked="" type="checkbox"/>	<input checked="" type="checkbox"/>	<input checked="" type="checkbox"/>	<input checked="" type="checkbox"/>	<input checked="" type="checkbox"/>	<input checked="" type="checkbox"/>
	17	-	-	<input checked="" type="checkbox"/>	<input checked="" type="checkbox"/>	-	-	<input checked="" type="checkbox"/>	<input checked="" type="checkbox"/>	<input checked="" type="checkbox"/>	<input checked="" type="checkbox"/>	<input checked="" type="checkbox"/>	<input checked="" type="checkbox"/>	<input checked="" type="checkbox"/>	<input checked="" type="checkbox"/>	<input checked="" type="checkbox"/>	<input checked="" type="checkbox"/>

Item	Band	Bandwidth(MHz)						Modulation			RB			Test Channel		
		1.4	3	5	10	15	20	QPSK	16QAM	64QAM	1	Half	Full	L	M	H
99%&26dB Bandwidth	2	<input checked="" type="checkbox"/>	<input checked="" type="checkbox"/>	<input checked="" type="checkbox"/>	<input checked="" type="checkbox"/>	<input checked="" type="checkbox"/>	<input checked="" type="checkbox"/>	<input checked="" type="checkbox"/>	<input checked="" type="checkbox"/>	<input checked="" type="checkbox"/>	<input type="checkbox"/>	<input type="checkbox"/>	<input checked="" type="checkbox"/>	<input checked="" type="checkbox"/>	<input checked="" type="checkbox"/>	<input checked="" type="checkbox"/>
	4	<input checked="" type="checkbox"/>	<input checked="" type="checkbox"/>	<input checked="" type="checkbox"/>	<input checked="" type="checkbox"/>	<input checked="" type="checkbox"/>	<input checked="" type="checkbox"/>	<input checked="" type="checkbox"/>	<input checked="" type="checkbox"/>	<input checked="" type="checkbox"/>	<input type="checkbox"/>	<input type="checkbox"/>	<input checked="" type="checkbox"/>	<input checked="" type="checkbox"/>	<input checked="" type="checkbox"/>	<input checked="" type="checkbox"/>
	5	<input checked="" type="checkbox"/>	<input checked="" type="checkbox"/>	<input checked="" type="checkbox"/>	<input checked="" type="checkbox"/>	--	--	<input checked="" type="checkbox"/>	<input checked="" type="checkbox"/>	<input checked="" type="checkbox"/>	<input type="checkbox"/>	<input type="checkbox"/>	<input checked="" type="checkbox"/>	<input checked="" type="checkbox"/>	<input checked="" type="checkbox"/>	<input checked="" type="checkbox"/>
	7	-	-	<input checked="" type="checkbox"/>	<input checked="" type="checkbox"/>	<input checked="" type="checkbox"/>	<input checked="" type="checkbox"/>	<input checked="" type="checkbox"/>	<input checked="" type="checkbox"/>	<input checked="" type="checkbox"/>	<input type="checkbox"/>	<input type="checkbox"/>	<input checked="" type="checkbox"/>	<input checked="" type="checkbox"/>	<input checked="" type="checkbox"/>	<input checked="" type="checkbox"/>
	12	<input checked="" type="checkbox"/>	<input checked="" type="checkbox"/>	<input checked="" type="checkbox"/>	<input checked="" type="checkbox"/>	-	-	<input checked="" type="checkbox"/>	<input checked="" type="checkbox"/>	<input checked="" type="checkbox"/>	<input type="checkbox"/>	<input type="checkbox"/>	<input checked="" type="checkbox"/>	<input checked="" type="checkbox"/>	<input checked="" type="checkbox"/>	<input checked="" type="checkbox"/>
	17	-	-	<input checked="" type="checkbox"/>	<input checked="" type="checkbox"/>	-	-	<input checked="" type="checkbox"/>	<input checked="" type="checkbox"/>	<input checked="" type="checkbox"/>	<input type="checkbox"/>	<input type="checkbox"/>	<input checked="" type="checkbox"/>	<input checked="" type="checkbox"/>	<input checked="" type="checkbox"/>	<input checked="" type="checkbox"/>
peak-to-average ratio	2	<input type="checkbox"/>	<input type="checkbox"/>	<input type="checkbox"/>	<input type="checkbox"/>	<input type="checkbox"/>	<input checked="" type="checkbox"/>	<input checked="" type="checkbox"/>	<input checked="" type="checkbox"/>	<input checked="" type="checkbox"/>	<input checked="" type="checkbox"/>	<input type="checkbox"/>	<input checked="" type="checkbox"/>	<input checked="" type="checkbox"/>	<input type="checkbox"/>	<input checked="" type="checkbox"/>
	4	<input type="checkbox"/>	<input type="checkbox"/>	<input type="checkbox"/>	<input type="checkbox"/>	<input type="checkbox"/>	<input checked="" type="checkbox"/>	<input checked="" type="checkbox"/>	<input checked="" type="checkbox"/>	<input checked="" type="checkbox"/>	<input checked="" type="checkbox"/>	<input type="checkbox"/>	<input checked="" type="checkbox"/>	<input checked="" type="checkbox"/>	<input type="checkbox"/>	<input checked="" type="checkbox"/>
	5	<input type="checkbox"/>	<input type="checkbox"/>	<input type="checkbox"/>	<input checked="" type="checkbox"/>	--	--	<input checked="" type="checkbox"/>	<input checked="" type="checkbox"/>	<input checked="" type="checkbox"/>	<input checked="" type="checkbox"/>	<input type="checkbox"/>	<input checked="" type="checkbox"/>	<input checked="" type="checkbox"/>	<input type="checkbox"/>	<input checked="" type="checkbox"/>
	7	-	-	<input type="checkbox"/>	<input type="checkbox"/>	<input type="checkbox"/>	<input checked="" type="checkbox"/>	<input checked="" type="checkbox"/>	<input checked="" type="checkbox"/>	<input checked="" type="checkbox"/>	<input checked="" type="checkbox"/>	<input type="checkbox"/>	<input checked="" type="checkbox"/>	<input checked="" type="checkbox"/>	<input type="checkbox"/>	<input checked="" type="checkbox"/>
	12	<input type="checkbox"/>	<input type="checkbox"/>	<input type="checkbox"/>	<input checked="" type="checkbox"/>	-	-	<input checked="" type="checkbox"/>	<input checked="" type="checkbox"/>	<input checked="" type="checkbox"/>	<input checked="" type="checkbox"/>	<input type="checkbox"/>	<input checked="" type="checkbox"/>	<input checked="" type="checkbox"/>	<input type="checkbox"/>	<input checked="" type="checkbox"/>
	17	<input type="checkbox"/>	<input type="checkbox"/>	<input type="checkbox"/>	<input checked="" type="checkbox"/>	<input type="checkbox"/>	<input type="checkbox"/>	<input checked="" type="checkbox"/>	<input checked="" type="checkbox"/>	<input checked="" type="checkbox"/>	<input checked="" type="checkbox"/>	<input type="checkbox"/>	<input checked="" type="checkbox"/>	<input checked="" type="checkbox"/>	<input type="checkbox"/>	<input checked="" type="checkbox"/>

Item	Band	Bandwidth(MHz)						Modulation			RB			Test Channel		
		1.4	3	5	10	15	20	QPSK	16QAM	64QAM	1	Half	Full	L	M	H
Band Edge at antenna terminals	2	☒	☒	☒	☒	☒	☒	☒	☒	☒	☒	☐	☒	☒	☐	☒
	4	☒	☒	☒	☒	☒	☒	☒	☒	☒	☒	☐	☒	☒	☐	☒
	5	☒	☒	☒	☒	--	--	☒	☒	☒	☒	☐	☒	☒	☐	☒
	7	-	-	☒	☒	☒	☒	☒	☒	☒	☒	☐	☒	☒	☐	☒
	12	☒	☒	☒	☒	-	-	☒	☒	☒	☒	☐	☒	☒	☐	☒
	17	-	-	☒	☒	-	-	☒	☒	☒	☒	☐	☒	☒	☐	☒
Spurious emissions at antenna terminals	2	☒	☒	☒	☒	☒	☒	☒	☒	☒	☒	☐	☐	☒	☒	☒
	4	☒	☒	☒	☒	☒	☒	☒	☒	☒	☒	☐	☐	☒	☒	☒
	5	☒	☒	☒	☒	--	--	☒	☒	☒	☒	☐	☐	☒	☒	☒
	7	-	-	☒	☒	☒	☒	☒	☒	☒	☒	☐	☐	☒	☒	☒
	12	☒	☒	☒	☒	-	-	☒	☒	☒	☒	☐	☐	☒	☒	☒
	17	-	-	☒	☒	-	-	☒	☒	☒	☒	☐	☐	☒	☒	☒

Item	Band	Bandwidth(MHz)						Modulation			RB			Test Channel		
		1.4	3	5	10	15	20	QPSK	16QAM	64QAM	1	Half	Full	L	M	H
Field strength of spurious radiation	2	<input type="checkbox"/>	<input type="checkbox"/>	<input type="checkbox"/>	<input type="checkbox"/>	<input type="checkbox"/>	<input checked="" type="checkbox"/>	<input checked="" type="checkbox"/>	<input type="checkbox"/>	<input type="checkbox"/>	<input checked="" type="checkbox"/>	<input type="checkbox"/>	<input type="checkbox"/>	<input checked="" type="checkbox"/>	<input checked="" type="checkbox"/>	<input checked="" type="checkbox"/>
	4	<input type="checkbox"/>	<input type="checkbox"/>	<input type="checkbox"/>	<input type="checkbox"/>	<input type="checkbox"/>	<input checked="" type="checkbox"/>	<input checked="" type="checkbox"/>	<input type="checkbox"/>	<input type="checkbox"/>	<input checked="" type="checkbox"/>	<input type="checkbox"/>	<input type="checkbox"/>	<input checked="" type="checkbox"/>	<input checked="" type="checkbox"/>	<input checked="" type="checkbox"/>
	5	<input type="checkbox"/>	<input type="checkbox"/>	<input type="checkbox"/>	<input checked="" type="checkbox"/>	--	--	<input checked="" type="checkbox"/>	<input type="checkbox"/>	<input type="checkbox"/>	<input checked="" type="checkbox"/>	<input type="checkbox"/>	<input type="checkbox"/>	<input checked="" type="checkbox"/>	<input checked="" type="checkbox"/>	<input checked="" type="checkbox"/>
	7	-	-	<input type="checkbox"/>	<input type="checkbox"/>	<input type="checkbox"/>	<input checked="" type="checkbox"/>	<input checked="" type="checkbox"/>	<input type="checkbox"/>	<input type="checkbox"/>	<input checked="" type="checkbox"/>	<input type="checkbox"/>	<input type="checkbox"/>	<input checked="" type="checkbox"/>	<input checked="" type="checkbox"/>	<input checked="" type="checkbox"/>
	12	<input type="checkbox"/>	<input type="checkbox"/>	<input type="checkbox"/>	<input checked="" type="checkbox"/>	-	-	<input checked="" type="checkbox"/>	<input type="checkbox"/>	<input type="checkbox"/>	<input checked="" type="checkbox"/>	<input type="checkbox"/>	<input type="checkbox"/>	<input checked="" type="checkbox"/>	<input checked="" type="checkbox"/>	<input checked="" type="checkbox"/>
	17	<input type="checkbox"/>	<input type="checkbox"/>	<input type="checkbox"/>	<input checked="" type="checkbox"/>	<input type="checkbox"/>	<input type="checkbox"/>	<input checked="" type="checkbox"/>	<input type="checkbox"/>	<input type="checkbox"/>	<input checked="" type="checkbox"/>	<input type="checkbox"/>	<input type="checkbox"/>	<input checked="" type="checkbox"/>	<input checked="" type="checkbox"/>	<input checked="" type="checkbox"/>
Frequency stability	2	<input type="checkbox"/>	<input type="checkbox"/>	<input type="checkbox"/>	<input type="checkbox"/>	<input type="checkbox"/>	<input checked="" type="checkbox"/>	<input checked="" type="checkbox"/>	<input type="checkbox"/>	<input type="checkbox"/>	<input type="checkbox"/>	<input type="checkbox"/>	<input checked="" type="checkbox"/>	<input type="checkbox"/>	<input checked="" type="checkbox"/>	<input type="checkbox"/>
	4	<input type="checkbox"/>	<input type="checkbox"/>	<input type="checkbox"/>	<input type="checkbox"/>	<input type="checkbox"/>	<input checked="" type="checkbox"/>	<input checked="" type="checkbox"/>	<input type="checkbox"/>	<input type="checkbox"/>	<input type="checkbox"/>	<input type="checkbox"/>	<input checked="" type="checkbox"/>	<input type="checkbox"/>	<input checked="" type="checkbox"/>	<input type="checkbox"/>
	5	<input type="checkbox"/>	<input type="checkbox"/>	<input type="checkbox"/>	<input checked="" type="checkbox"/>	--	--	<input checked="" type="checkbox"/>	<input type="checkbox"/>	<input type="checkbox"/>	<input type="checkbox"/>	<input type="checkbox"/>	<input checked="" type="checkbox"/>	<input type="checkbox"/>	<input checked="" type="checkbox"/>	<input type="checkbox"/>
	7	-	-	<input type="checkbox"/>	<input type="checkbox"/>	<input type="checkbox"/>	<input checked="" type="checkbox"/>	<input checked="" type="checkbox"/>	<input type="checkbox"/>	<input type="checkbox"/>	<input type="checkbox"/>	<input type="checkbox"/>	<input checked="" type="checkbox"/>	<input type="checkbox"/>	<input checked="" type="checkbox"/>	<input type="checkbox"/>
	12	<input type="checkbox"/>	<input type="checkbox"/>	<input type="checkbox"/>	<input checked="" type="checkbox"/>	-	-	<input checked="" type="checkbox"/>	<input type="checkbox"/>	<input type="checkbox"/>	<input type="checkbox"/>	<input type="checkbox"/>	<input checked="" type="checkbox"/>	<input type="checkbox"/>	<input checked="" type="checkbox"/>	<input type="checkbox"/>
	17	<input type="checkbox"/>	<input type="checkbox"/>	<input type="checkbox"/>	<input checked="" type="checkbox"/>	<input type="checkbox"/>	<input type="checkbox"/>	<input checked="" type="checkbox"/>	<input type="checkbox"/>	<input type="checkbox"/>	<input type="checkbox"/>	<input type="checkbox"/>	<input checked="" type="checkbox"/>	<input type="checkbox"/>	<input checked="" type="checkbox"/>	<input type="checkbox"/>

Remark:
 The mark "☒" means is chosen for testing; The mark "☐" means is not chosen for testing;
 The mark "-" means is not supported bandwidth

5. RADIO TECHNICAL REQUIREMENTS SPECIFICATION

5.1 REFERENCE DOCUMENTS FOR TESTING

No.	Identity	Document Title
1	FCC 47 CFR Part 2	Frequency allocations and radio treaty matters; general rules and regulations
2	FCC 47 CFR Part 22	Public Mobile Services
3	FCC 47 CFR Part 27	Miscellaneous Wireless Communications Services
4	FCC 47 CFR Part 24	Personal Communications Services
5	ANSI C63.26-2015	American National Standard for Compliance Testing of Transmitters Used in Licensed Radio Services
6	KDB 971168 D01	KDB 971168 D01 Power Meas License Digital Systems v03r01

5.2 ERP OR EIRP

Test Requirement: FCC 47 CFR Part 2.1046(a)
LTE Band 2: FCC 47 CFR Part 24.232(c)
LTE Band 4: FCC 47 CFR Part 27.50(d)(4)
LTE Band 5: FCC 47 CFR Part 22.913(a)
LTE Band 7: FCC 47 CFR Part 27.50(h)(2)
LTE Band 12 & Band 17: FCC 47 CFR Part 27.50(c)(10)

Test Method: KDB 971168 D01v03r01 Section 5.6 & ANSI C63.26-2015

Limit:

FCC 47 CFR Part 22.913(a):

The ERP of mobile transmitters and auxiliary test transmitters must not exceed 7 Watts.

FCC 47 CFR Part 24.232(c):

Mobile and portable stations are limited to 2 watts EIRP.

FCC 47 CFR Part 27.50(d)(4):

Fixed, mobile, and portable (hand-held) stations operating in the 1710-1755 MHz band and mobile and portable stations operating in the 1695-1710 MHz and 1755-1780 MHz bands are limited to 1 watt EIRP.

FCC 47 CFR Part 27.50(c)(10):

Portable stations (hand-held devices) in the 600 MHz uplink band and the 698-746 MHz band, and fixed and mobile stations in the 600 MHz uplink band are limited to 3 watts ERP.

FCC 47 CFR Part 27.50(h)(2):

Mobile and other user stations. Mobile stations are limited to 2.0 watts EIRP. All user stations are limited to 2.0 watts transmitter output power.

1. Power is given in terms of effective radiated power (ERP).
2. Applicants in the Los Angeles, CA, area who demonstrate a need to serve both the downtown and fringe areas will be permitted to utilize an ERP of 1 kw at the following mountaintop sites: Santiago Park, Sierra Peak, Mount Lukens, and Mount Wilson.
3. Stations with antennas below 305 m (1,000 ft) (AAT) will be restricted to a maximum power of 1 kw (ERP).
4. Licensees in San Diego, CA, will be permitted to utilize an ERP of 500 watts at the following mountaintop sites: Palomar, Otay, Woodson and Miguel.

Test Procedure:

$$\text{ERP or EIRP} = P_{\text{Meas}} + G_T - L_C$$

where:

ERP or EIRP = effective radiated power or equivalent isotropically radiated power, respectively

Shenzhen UnionTrust Quality and Technology Co., Ltd.

Address: 16/F, Block A, Building 6, Baoneng Science and Technology Park, Qingxiang Road No.1, Longhua New District, Shenzhen, China

Tel: +86-755-28230888

Fax: +86-755-28230886

E-mail: info@uttlab.com

<http://www.uttlab.com>

UTTR-RF-FCC4G-V1.0

(expressed in the same units as P_{Meas}, typically dBW or dBm);

P_{Meas} = measured transmitter output power or PSD, in dBm or dBW;

G_T = gain of the transmitting antenna, in dBd (ERP) or dBi (EIRP);

1) L_C = signal attenuation in the connecting cable between the transmitter and antenna, in dB.

Test Setup: Refer to section 4.2.1 for details.

Instruments Used: Refer to section 3 for details

Test Mode: Link mode

Test Results: Pass

Test Data: See table below

5.2.1 LTE Band 2

LTE Band 2 Maximum EIRP (dBm)					
Channel	QPSK; RB:1	16QAM; RB:1	64QAM; RB:1	Limit (dBm)	Result
Channel Bandwidth: 1.4MHz					
Lowest	24.53	23.73	/	33.01	Pass
Middle	24.72	23.40	/	33.01	Pass
Highest	24.23	23.19	/	33.01	Pass
Channel Bandwidth: 3MHz					
Lowest	24.51	23.78	/	33.01	Pass
Middle	24.70	23.40	/	33.01	Pass
Highest	24.30	23.31	/	33.01	Pass
Channel Bandwidth: 5MHz					
Lowest	24.57	23.87	/	33.01	Pass
Middle	24.73	23.33	/	33.01	Pass
Highest	24.32	23.14	/	33.01	Pass
Channel Bandwidth: 10MHz					
Lowest	24.48	23.88	/	33.01	Pass
Middle	24.64	23.37	/	33.01	Pass
Highest	24.32	23.31	/	33.01	Pass
Channel Bandwidth: 15MHz					
Lowest	24.65	23.83	/	33.01	Pass
Middle	24.59	23.35	/	33.01	Pass
Highest	24.32	23.23	/	33.01	Pass
Channel Bandwidth: 20MHz					
Lowest	24.68	23.90	/	33.01	Pass
Middle	24.73	23.44	/	33.01	Pass
Highest	24.37	23.33	/	33.01	Pass

5.2.2 LTE Band 4

LTE Band 4 Maximum EIRP (dBm)					
Channel	QPSK; RB:1	16QAM; RB:1	64QAM; RB:1	Limit (dBm)	Result
Channel Bandwidth: 1.4MHz					
Lowest	24.22	23.50	/	30.00	Pass
Middle	23.95	23.62	/	30.00	Pass
Highest	24.31	22.66	/	30.00	Pass
Channel Bandwidth: 3MHz					
Lowest	24.25	23.46	/	30.00	Pass
Middle	24.06	23.63	/	30.00	Pass
Highest	23.91	22.65	/	30.00	Pass
Channel Bandwidth: 5MHz					
Lowest	24.26	23.53	/	30.00	Pass
Middle	24.02	23.65	/	30.00	Pass
Highest	24.30	22.66	/	30.00	Pass
Channel Bandwidth: 10MHz					
Lowest	24.26	23.36	/	30.00	Pass
Middle	23.85	22.88	/	30.00	Pass
Highest	24.22	23.58	/	30.00	Pass
Channel Bandwidth: 15MHz					
Lowest	24.08	23.49	/	30.00	Pass
Middle	23.97	23.54	/	30.00	Pass
Highest	24.35	22.75	/	30.00	Pass
Channel Bandwidth: 20MHz					
Lowest	24.28	23.57	/	30.00	Pass
Middle	24.04	23.68	/	30.00	Pass
Highest	24.37	22.78	/	30.00	Pass

5.2.3 LTE Band 5

LTE Band 5 Maximum ERP (dBm)					
Channel	QPSK; RB:1	16QAM; RB:1	64QAM; RB:1	Limit (dBm)	Result
Channel Bandwidth: 1.4MHz					
Lowest	18.54	18.14	/	38.45	Pass
Middle	18.67	18.14	/	38.45	Pass
Highest	18.79	17.67	/	38.45	Pass
Channel Bandwidth: 3MHz					
Lowest	18.71	18.19	/	38.45	Pass
Middle	18.76	17.88	/	38.45	Pass
Highest	18.65	17.67	/	38.45	Pass
Channel Bandwidth: 5MHz					
Lowest	18.53	18.05	/	38.45	Pass
Middle	18.80	18.20	/	38.45	Pass
Highest	18.74	17.59	/	38.45	Pass
Channel Bandwidth: 10MHz					
Lowest	18.73	18.17	/	38.45	Pass
Middle	18.82	18.23	/	38.45	Pass
Highest	18.81	17.77	/	38.45	Pass

5.2.4 LTE Band 7

LTE Band 7 Maximum EIRP (dBm)					
Channel	QPSK; RB:1	16QAM; RB:1	64QAM; RB:1	Limit (dBm)	Result
Channel Bandwidth: 5MHz					
Lowest	21.20	21.21	/	33.01	Pass
Middle	21.35	20.90	/	33.01	Pass
Highest	20.06	20.59	/	33.01	Pass
Channel Bandwidth: 10MHz					
Lowest	21.09	21.26	/	33.01	Pass
Middle	21.45	20.72	/	33.01	Pass
Highest	19.98	20.59	/	33.01	Pass
Channel Bandwidth: 15MHz					
Lowest	21.21	21.18	/	33.01	Pass
Middle	21.48	20.79	/	33.01	Pass
Highest	20.09	20.54	/	33.01	Pass
Channel Bandwidth: 20MHz					
Lowest	21.27	21.30	/	33.01	Pass
Middle	21.53	20.91	/	33.01	Pass
Highest	20.10	20.60	/	33.01	Pass

5.2.5 LTE Band 12

LTE Band 12 Maximum ERP (dBm)					
Channel	QPSK; RB:1	16QAM; RB:1	64QAM; RB:1	Limit (dBm)	Result
Channel Bandwidth: 1.4MHz					
Lowest	19.14	18.44	/	34.77	Pass
Middle	19.05	18.19	/	34.77	Pass
Highest	19.37	18.08	/	34.77	Pass
Channel Bandwidth: 3MHz					
Lowest	19.28	18.42	/	34.77	Pass
Middle	19.24	18.24	/	34.77	Pass
Highest	19.31	18.22	/	34.77	Pass
Channel Bandwidth: 5MHz					
Lowest	19.12	18.42	/	34.77	Pass
Middle	18.99	18.16	/	34.77	Pass
Highest	19.42	18.22	/	34.77	Pass
Channel Bandwidth: 10MHz					
Lowest	19.18	18.48	/	34.77	Pass
Middle	19.15	18.26	/	34.77	Pass
Highest	19.46	18.26	/	34.77	Pass

5.2.6 LTE Band 17

LTE Band 17 Maximum ERP (dBm)					
Channel	QPSK; RB:1	16QAM; RB:1	64QAM; RB:1	Limit (dBm)	Result
Channel Bandwidth: 5MHz					
Lowest	19.13	18.35	/	34.77	Pass
Middle	19.35	18.28	/	34.77	Pass
Highest	19.45	18.61	/	34.77	Pass
Channel Bandwidth: 10MHz					
Lowest	19.27	18.44	/	34.77	Pass
Middle	19.38	18.46	/	34.77	Pass
Highest	19.45	18.61	/	34.77	Pass

5.3 CONDUCTED OUTPUT POWER

FCC 47 CFR Part 2.1046(a)

LTE Band 2 & LTE Band 25: FCC 47 CFR Part 24.232(c)

LTE Band 4 & LTE Band 66: FCC 47 CFR Part 27.50(d)(4)

Test Requirement: **LTE Band 5 & LTE Band 26:** FCC 47 CFR Part 22.913(a)

LTE Band 7 & Band 38 & Band 41: FCC 47 CFR Part 27.50(h)(2)

LTE Band 12 & Band 17: FCC 47 CFR Part 27.50(c)(10)

LTE Band 13: FCC 47 CFR Part 27.50(b)(10)

Test Method: KDB 971168 D01v03r01 & ANSI C63.26-2015

Limit:

FCC 47 CFR Part 22.913(a):

The ERP of mobile transmitters and auxiliary test transmitters must not exceed 7 Watts.

FCC 47 CFR Part 24.232(c):

Mobile and portable stations are limited to 2 watts EIRP.

FCC 47 CFR Part 27.50(d)(4):

Fixed, mobile, and portable (hand-held) stations operating in the 1710-1755 MHz band and mobile and portable stations operating in the 1695-1710 MHz and 1755-1780 MHz bands are limited to 1 watt EIRP.

FCC 47 CFR Part 27.50(c)(10):

Portable stations (hand-held devices) in the 600 MHz uplink band and the 698-746 MHz band, and fixed and mobile stations in the 600 MHz uplink band are limited to 3 watts ERP.

FCC 47 CFR Part 27.50(h)(2):

Mobile and other user stations. Mobile stations are limited to 2.0 watts EIRP. All user stations are limited to 2.0 watts transmitter output power.

FCC 47 CFR Part 27.50(b)(10):

Portable stations (hand-held devices) transmitting in the 746-757 MHz, 776-788 MHz, and 805-806 MHz bands are limited to 3 watts ERP.

1. Power is given in terms of effective radiated power (ERP).
2. Applicants in the Los Angeles, CA, area who demonstrate a need to serve both the downtown and fringe areas will be permitted to utilize an ERP of 1 kw at the following mountaintop sites: Santiago Park, Sierra Peak, Mount Lukens, and Mount Wilson.
3. Stations with antennas below 305 m (1,000 ft) (AAT) will be restricted to a maximum power of 1 kw (ERP).
4. Licensees in San Diego, CA, will be permitted to utilize an ERP of 500 watts at the following mountaintop sites: Palomar, Otay, Woodson and Miguel.

Test Procedure:

The EUT was set up for the maximum power with LTE link data modulation and link up with simulator. Set the EUT to transmit under low, middle and high channel and record the power level shown on simulator.

Note: The cable loss and attenuator loss were offset into measure device as an amplitude offset.

Test Setup: Refer to section 4.2.2 for details.

Instruments Used: Refer to section 3 for details

Test Mode: Link mode

Test Results: Pass

Test Data: [The full result refer to section 4.5 for details.](#)