

# Antenna SPEC

**Model name: G44**

Manufacture: ShenZhen QiXinTongDa Technology Co.,Ltd.

Address: Room503-505,Building211, Tairan

IndustrialandTradePark,Chegongmiao,FutianDistrict,Shenzhen

# 1.Test Project

	Test Project	Equipment
1. S Parameter	<ol style="list-style-type: none"><li>1. Return Loss (RL)</li><li>2. VSWR</li></ol>	Network Analyzer:  Agilent 5071B
2. RF Test  (2G+3G+4G)	<ol style="list-style-type: none"><li>1. power</li><li>2. level</li><li>3. TRP/TIS</li></ol>	Comprehensive Test:  CMW500/8960  Test Environment:  Anechoic Chamber

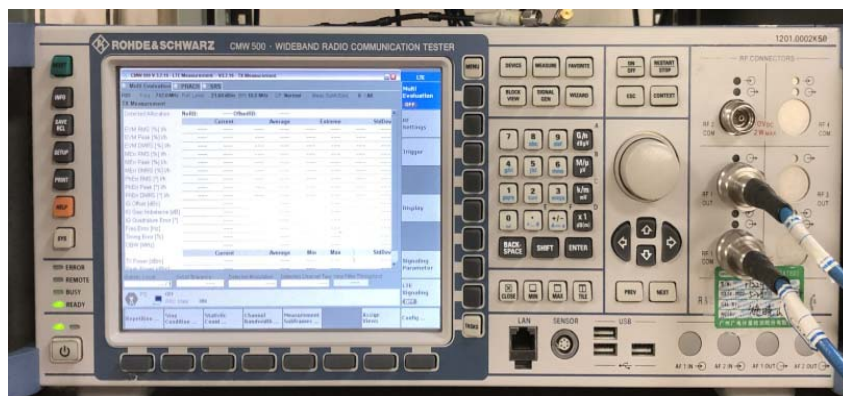
## 2. Test Equipment



Agilent 5071B (S Parameter (RL/VSWR) Test Equipment)

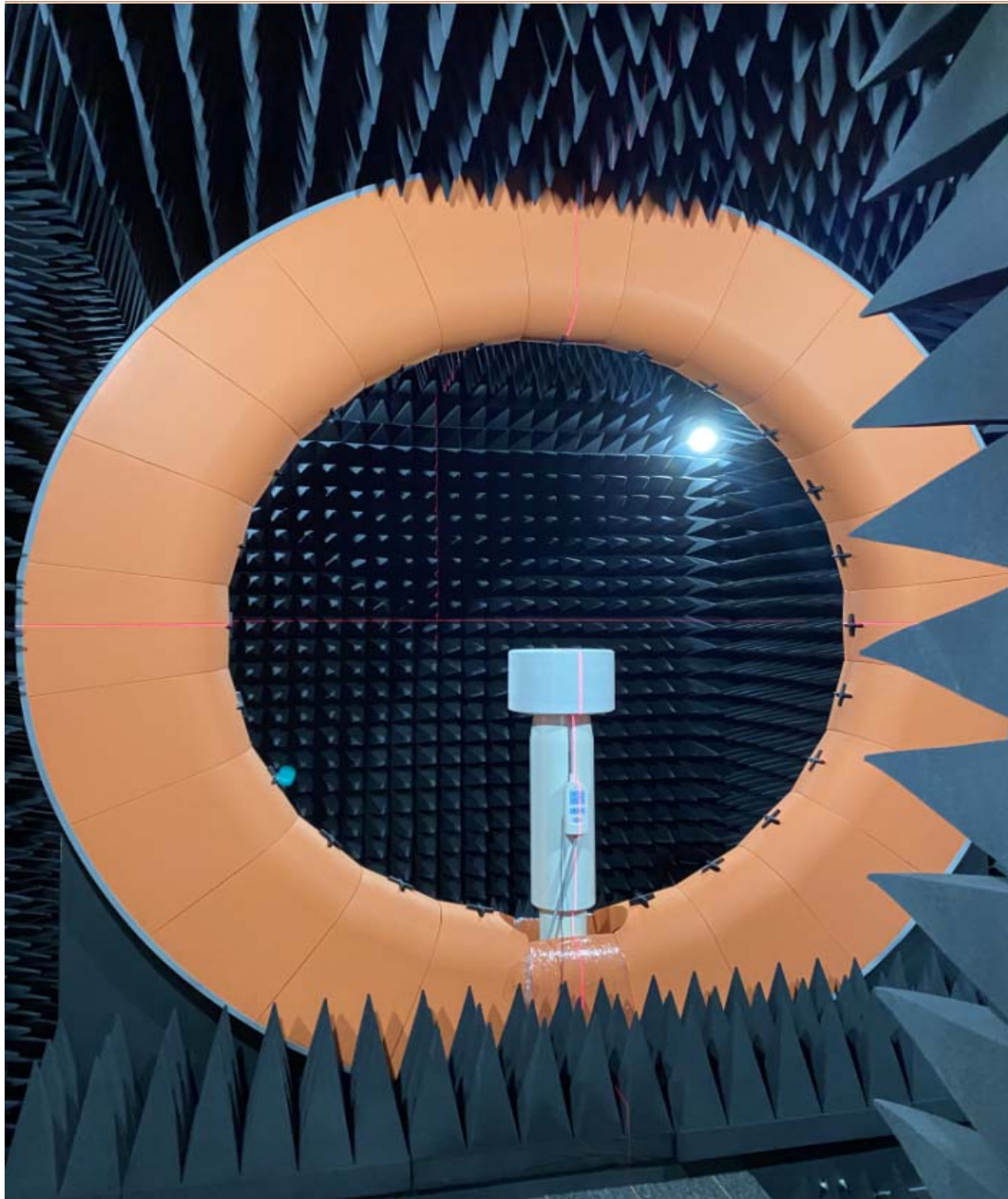


Agilent 8960 (2G/3G Test Equipment)



CMW 500 (2G/3G/4G Test Equipment)

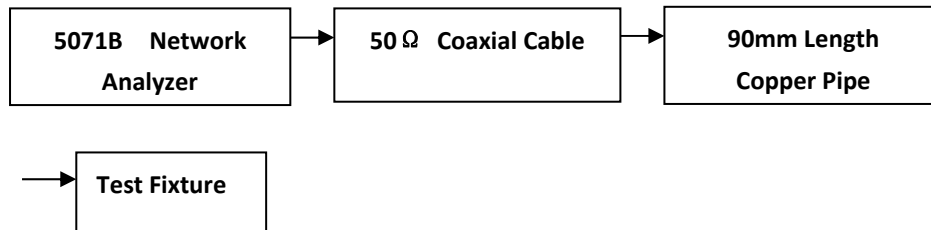
### 3. TestEnvironment



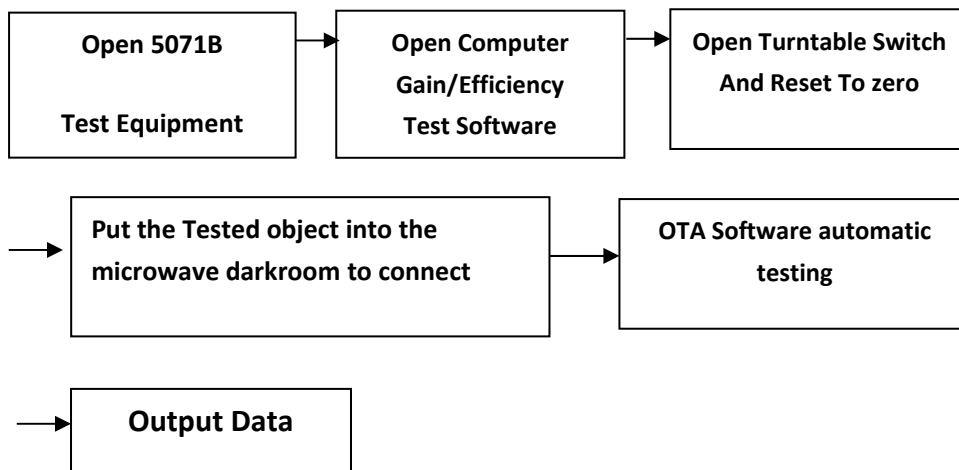
Microwave Anechoic Chamber

## 4. Test Steps

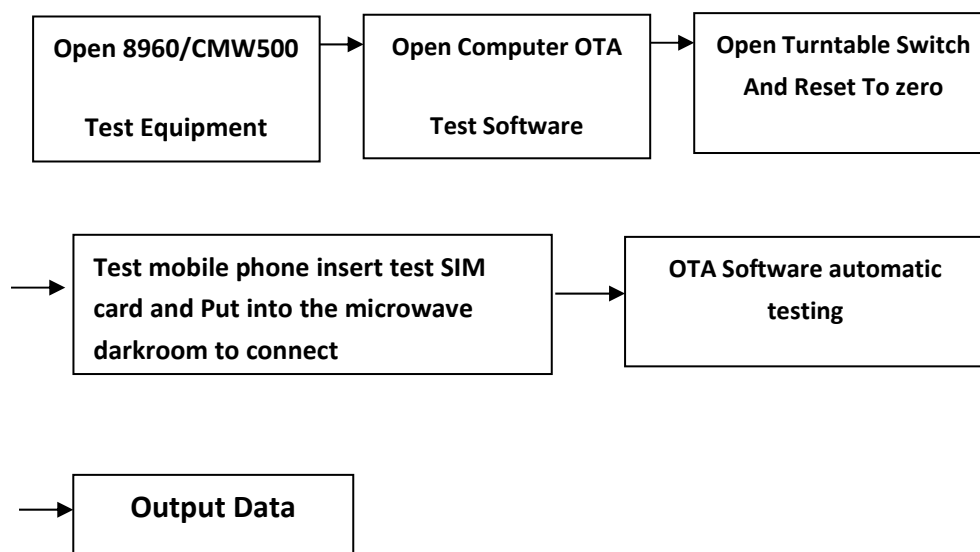
### Passive VSWR/RL Test Steps:



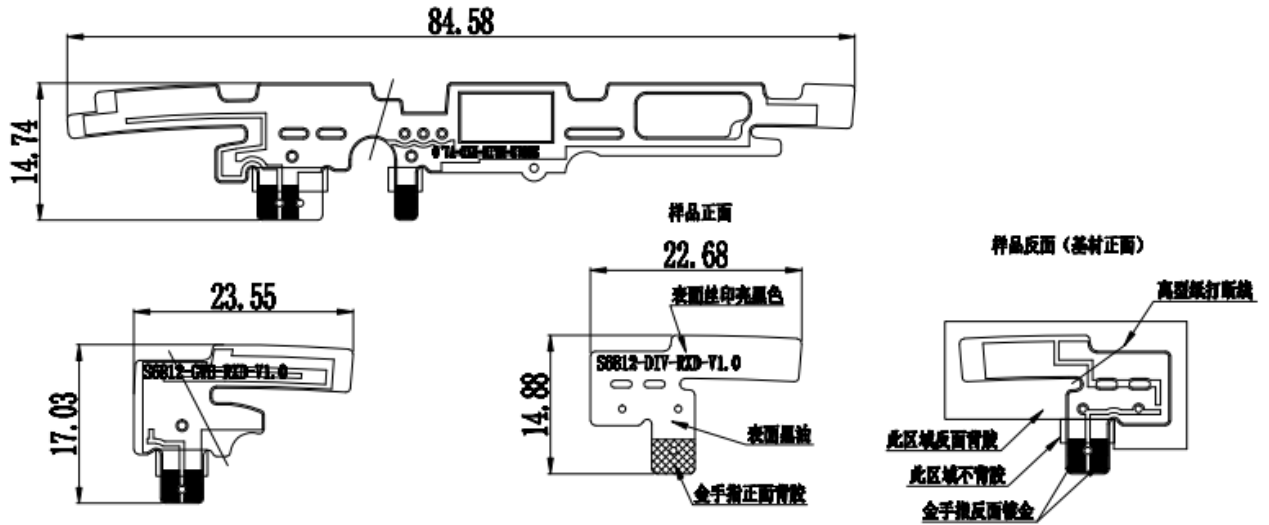
### Gain/Efficiency Test Steps:



### Active TRP/TIS Test Steps:



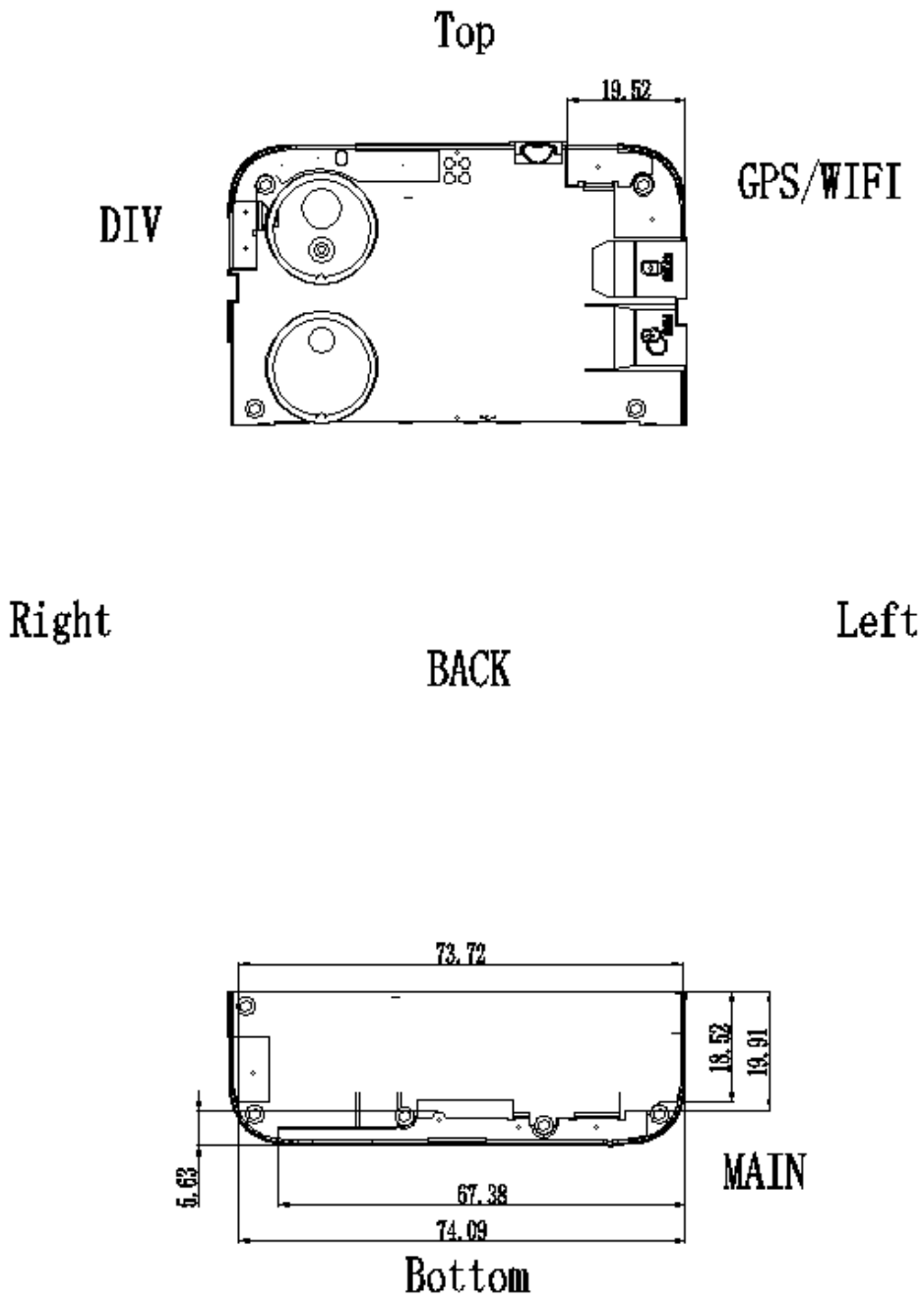
# 5. Antenna Dimensions



**NOTES:**

1. 斜线填充部位为电气走线覆铜; 2. 红色为外形轮廓, 注意边缘尺寸
3. 材料性质为电解铜, 半对半材质 厚度0.05mm; (贴后背背面, 保证粘性)
4. 胶纸为: 3M-9471E进口胶; 5. 金手指表面镀金/镀镍 $3\sim 5\mu^2$ ;
6. 保护膜为哑黑色/哑白色; 7. 总体厚度应小于或等于0.2mm
8. 只允许产品图导电;

深圳市旗鑫通达科技有限公司			
单位: mm		名称: S0812 FCC	
公差:			设计:
I	$\pm 0.5$	材料: PI	审核:
.I	$\pm 0.25$		确认:
.II	$\pm 0.05$		
.III	$\pm$	颜色: 哑黑色/哑白色	比例: 1:1
ANGULAR	$\leq \pm 0.5^\circ$		版本: A



## 6.Introduction to Antenna Information

S6812	
Antenna type and frequency band	<p>MAIN ANTENNA(PIFA):2G/3G/4G</p> <p>DIV ANTENNA(PIFA):2G/3G/4G</p> <p>GPS/WIFI/BT ANTENNA(PIFA):L1/2.4GWIFI/BT</p>
Antenna materia	FPC

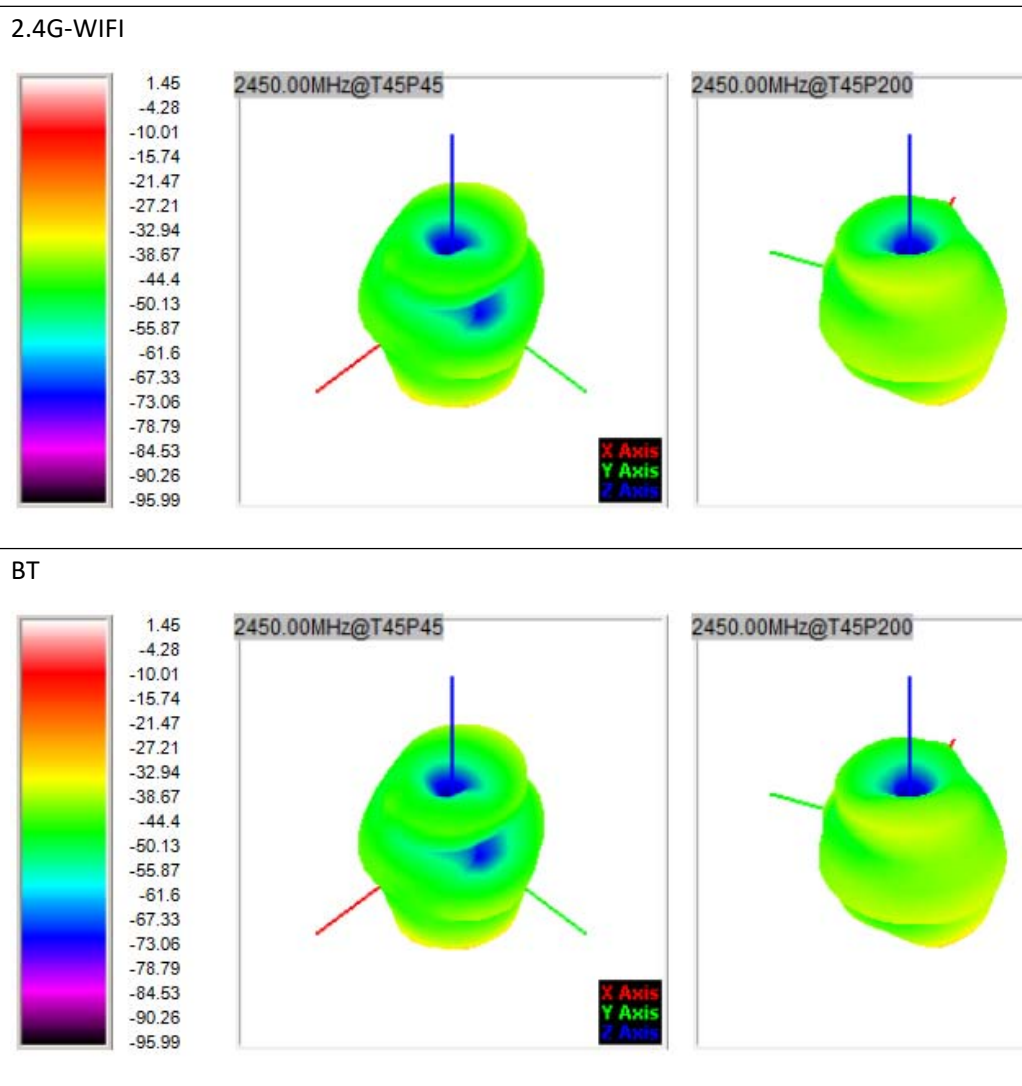
## 7.Antenna Gain

BAND	Peak Gain(dBi)
GSM	
850	-1.56
900	-1.32
1800	-0.85
1900	-1.20
WCDMA	
B1	-1.56
B2	-1.20
B4	-0.85
B5	-1.56
B8	-1.32
LTE	
B2	-1.20
B3	-0.85
B4	-0.85
B5	-1.56
B7	0.62



B12	-1.85
B17	-1.85
B28AB	-1.85
B66	-0.85
B71	-2.15
Bluetooth	1.45
WIFI-2.4G	1.45
GPS	-0.20

## 8.3D Lobe Diagram



# 9. Antenna OTA

OTA											
BAND	CHN	TRP	TIS	BAND	CHN	TRP	TIS	BAND	CHN	TRP	TIS
GSM 850	L	26.15		GSM 900	L	25.15		DCS 1800	L	26.13	
	M	25.97			M	26.00			M	26.05	
	H	26.06	-102.02		H	26.8	-102.14		H	25.45	-104.13
PCS 1900	L	24.08		W1	L	18.37		W2	L	18.15	
	M	24.34			M	18.01			M	18.12	
	H	24.92	-103.25		H	17.39	-103.68		H	18.00	-104.59
W4	L	16.73		W5	L	17.12		W8	L	16.56	
	M	17.52			M	17.5			M	17.10	
	H	18.19	-104.7		H	17.71	-102.89		H	17.22	-103.05
FDD- B2	L	19.08		FDD- B3	L	17.02		FDD- B4	L	16.83	
	M	18.99			M	17.65			M	17.56	
	H	18.74	-94.15		H	18.15	-93.85		H	18.07	-94.84
FDD- B5	L	17.28		FDD-B7	L	16.02		FDD-B12	L	16.35	
	M	17.33			M	15.00			M	17.05	
	H	17.43	-92.53		H	15.04	-91.79		H	17.11	-92.02
FDD- B17	L	16.36		FDD- B28A	L	16.21		FDD- B28B	L	16.63	
	M	16.63			M	16.65			M	16.65	
	H	16.71	-92.15		H	16.75	-91.55		H	17.21	-90.45
FDD- B66	L	17.15		FDD- B71	L	16.34					
	M	17.56			M	17.59					
	H	18.02	-93.86		H	17.47	-90.53				