

# P2888-620-ALL-M01



**GRIFFIN** BlueTrip DualConnect™  
User Manual

Thank you for purchasing our BlueTrip DualConnect. BlueTrip connects wirelessly via Bluetooth to your iPhone or other Bluetooth-capable smartphone. Then BlueTrip DualConnect can send the audio to your car stereo in either of two ways: via FM transmission to your car radio, or via direct AUX-cable connection. And BlueTrip even has a built-in microphone so you can use it as a handsfree speakerphone in your car.

**1 YEAR**  
WARRANTY

We stand behind every product with the industry's best customer service, backed by a simple, fair warranty. Please read our Warranty details at [www.griffintechnology.com/support](http://www.griffintechnology.com/support).

[griffintechnology.com/support](http://griffintechnology.com/support)

BlueTrip DualConnect	组件所含的有害物质					
	铅 (Pb)	汞 (Hg)	镉 (Cd)	六价铬化合物 (Cr <sup>6+</sup> )	多溴苯醚 (PBB)	多溴联苯醚 (PBDE)
塑料组件	0	0	0	0	0	0
印刷电路板组件	X	0	0	0	0	0
金属部件	X	0	0	0	0	0

0: 表示该组件所用各类均质材料中所有有害物质低于 SJ/T11363-2006 的限制要求  
X: 表示该组件所用各类均质材料中至少有一种材料所含的有毒有害物质高于 SJ/T11363-2006 的限制要求  
对所有之总称所有产品。本表显示我公司供应的电子信息技术产品可能包含这些物质。  
注意: 在所有产品中可能会也可能不会含有所有所列的部件。  
1541-P2888-620-ALL-M01E



Griffin Technology  
P2888

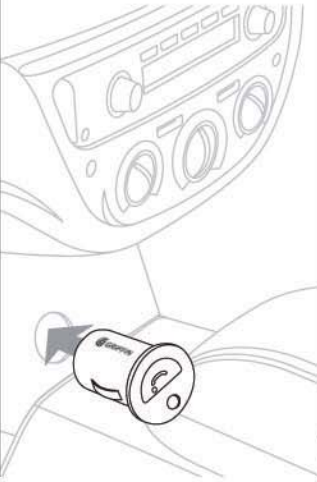
This device complies with Part 15 of the FCC Rules. Operation is subject to the following two conditions: (1) this device may not cause harmful interference, and (2) this device must accept any interference received, including interference that may cause undesired operation. The manufacturer is not responsible for any radio or tv interference caused by unauthorized modifications to this equipment. Such modifications could void the user's authority to operate the equipment.

This device complies with RSS-210 of the Industry Canada Rules. Operation is subject to the following two conditions: (1) this device may not cause harmful interference, and (2) this device must accept any interference received, including interference that may cause undesired operation. The manufacturer is not responsible for any radio or tv interference caused by unauthorized modifications to this equipment. Such modifications could void the user's authority to operate the equipment. The device is available on the Canadian market under part P2888. The product is certified with Industry Canada by the applicant under IC certification number 1546A-P2888.  
Improper use of this device could result in exposure to RF energy.

© 2011 Griffin Technology | [www.griffintechnology.com](http://www.griffintechnology.com) | BlueTrip is a registered trademark of Griffin Technology. | DualConnect is a trademark of Griffin Technology, Inc. | iPad and iPhone are trademarks of Apple Inc. registered in the U.S. and other countries. | The Bluetooth® word mark and logos are registered trademarks owned by Bluetooth SIG, Inc. and any use of such marks by Griffin Technology is under license. | Made in China. Designed in Nashville, Tennessee. | Please recycle this package. Thank!

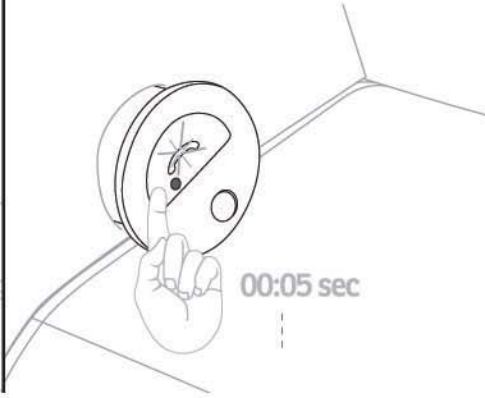
## EN SETUP

- 1 Plug BlueTrip into your car's 12 volt power outlet.



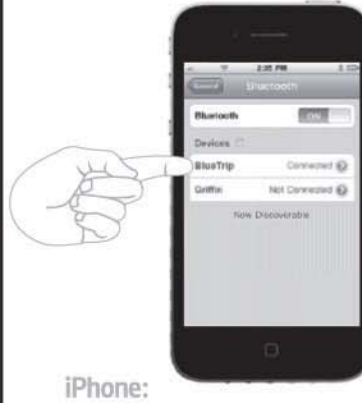
The first time you use BlueTrip with any other Bluetooth device, you must introduce them to each other in a process known as Pairing.

- 2 Press and hold BlueTrip's button for 5 seconds. During the next 180 seconds, BlueTrip's light will blink rapidly, showing that it is, in Bluetooth terminology, "discoverable".



- 3 Activate Bluetooth on your smartphone or other Bluetooth device.

On iPhone and other smartphones, Bluetooth pairing is usually handled under the phone's "Settings" menu.



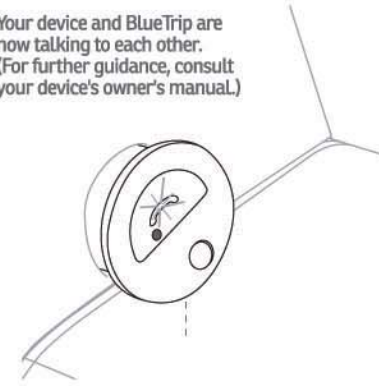
iPhone:

Select BlueTrip from the list of available devices. If your device displays a message that BlueTrip would like to pair with it, hit the "Pair" button.

You may be required to select BlueTrip as an Audio Output Device.

If your device requests a passcode, type "0000" (4 zeros).

Your device and BlueTrip are now talking to each other. (For further guidance, consult your device's owner's manual.)



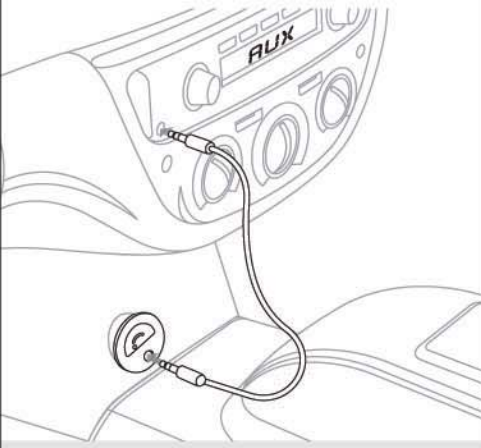
- 4 Now you'll decide how BlueTrip DualConnect communicates with your car, via AUX-in or FM.



## STEREOS WITH AUX

Plug the included audio cable into BlueTrip's audio jack, and the other end into your stereo.

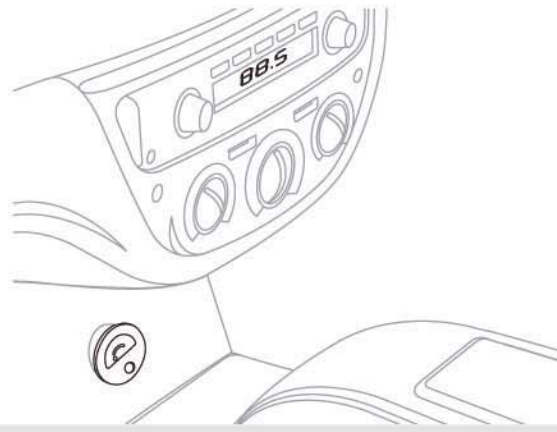
Note that, if your car stereo has an AUX-in jack, BlueTrip DualConnect can be used with iPod touch, iPad, and other Bluetooth-capable devices.



## STEREOS WITH FM

- 1 On your FM radio, find a frequency at which you hear nothing but static. The ideal frequency is one at which you hear static on either side; in other words, find 3 empty frequencies in a row and choose the middle one.

Our StationFinder website can help you locate an open FM frequency near you: <http://stationfinder.griffintechology.com/>



- 2 Set BlueTrip to the same frequency using your paired smartphone: Dial two "star" symbols (\*\*) followed by the number of the frequency. Example: If the frequency on your radio is 88.5, dial "\*\*885" and hit the call/send button. Once the frequency is set, the call will end automatically.

Now, music or call audio from your phone will play through your car stereo.



## PHONE CALLS

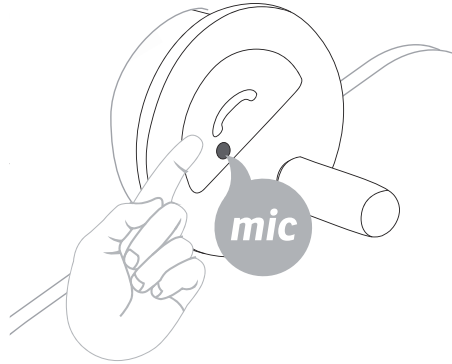
Take phone calls as you normally do; or you can use BlueTrip and your car stereo as a speakerphone by pressing BlueTrip's button. BlueTrip's microphone will pick up your voice, and the caller's voice will play through your car speakers.

Push the button again to end the call and return to normal operation.

EN

### BlueTrip's Multi-Function Button

BlueTrip's Multi-Function Button will activate a number of features on your mobile phone or smartphone depending on your carrier's Bluetooth implementation in your device. See your owner's manual for details.



For iPhone:

Press **1X** - Activates Voice Command in iPhone 3GS and later models.

Press **1X** and hold for approx. **2 seconds** - Redial the last number called.

For other phones, to answer or place a call:

Press **1X** and hold for approx. **2 seconds** - Redial the last number called.

Press **1X** - Answer a call.

Press **1X** - End a call.

### SAFETY WARNINGS:

Make sure that BlueTrip DualConnect is connected before you start driving. Do not attempt to connect your BlueTrip DualConnect or iPhone, smartphone or other device while you are driving.

Do not attempt to disconnect or reconnect your BlueTrip DualConnect or iPhone, smartphone or other device while you are driving.

Make sure that BlueTrip DualConnect and its accessories are adjusted so as not to interfere with your use of any controls in your vehicle before you start driving. Do not use BlueTrip DualConnect or its accessories in any area where they might interfere with the deployment of your vehicle's airbags.

If BlueTrip DualConnect or its accessories get wet or appear to be damaged, discontinue use immediately.

Only use BlueTrip DualConnect and its accessories in ways described in these instructions.

Do not disassemble BlueTrip DualConnect or its accessories. There are no user-serviceable parts inside.

BlueTrip DualConnect and its accessories may contain small parts, which present a choking hazard to small children. Keep BlueTrip DualConnect and its accessories away from small children.

Use of BlueTrip DualConnect and its accessories while driving a vehicle may not be legal in all jurisdictions. Make sure you obey all laws and regulations governing the use of mobile devices and accessories while you are driving.

Even though BlueTrip DualConnect and its accessories are intended to be used while you are driving, there are times when you should not use BlueTrip DualConnect or its accessories (such as when you are driving in heavy traffic or hazardous road conditions). Do not allow your use of BlueTrip DualConnect or its accessories or your iPhone, smartphone or other device to distract you while you are driving. Distracted driving can cause serious injuries (even death) and property damage to you and to others. Make sure you pay attention to the road, road signs, traffic, pedestrians, and road conditions and only use BlueTrip DualConnect and its accessories and your iPhone, smartphone or other device when it is safe for you to do so.

Griffin Technology, Inc. does not assume any liability for personal injury or property damage arising out of or related to your use of BlueTrip DualConnect or its accessories while you are driving.

EN

### Troubleshooting

- Is BlueTrip firmly seated in the 12 volt socket?
- Is BlueTrip receiving power? (Check your car's fuses.)
- Does BlueTrip show up among your device's available Bluetooth pairings? (If not, go through the Pairing steps.)
- Check that both ends of the AUX cable are firmly seated.
- Check your player. (Is it playing music? Could volume level be affecting playback?)
- Are BlueTrip and your FM radio tuned to the same frequency? (See Set-up Step 4.)

### Technical Specifications

- Power in: 12 V DC
- Activity monitor: BlueTrip's LED blinks intermittently while passing data.
- Bluetooth version: 2.1+EDR
- Bluetooth profiles supported: HFP, A2DP
- Microphone: Built into 12 V adapter
- Cable length: 2.6 ft (80 cm)
- Cable type: Stereo audio, 3-pole to 3-pole
- Cable connectors: 1/8" (3.5 mm) stereo; 4 conductor, compatible with Griffin HandsFree AUX Cable

### You Have Options

Extend your mic: BlueTrip AUX is compatible with the microphone in our HandsFree AUX Cable, which raises the mic to the level of your car stereo's input jack.

Extend your charging: BlueTrip AUX is compatible with our PowerJolt Plus chargers, which give you back your 12 V socket for other uses while you charge your mobile USB device.

### Still have a problem?

No problem. Griffin Support is ready to help. Online or on the phone, you'll talk with a real human being who actually knows and uses Griffin products.

800-208-5996

Mon - Thurs 9 AM to 6 PM; Fri 9 AM to 5 PM, Central Time

www.griffintechnology.com/support

Any time, day or night, all year 'round

Your product is BlueTrip DualConnect.