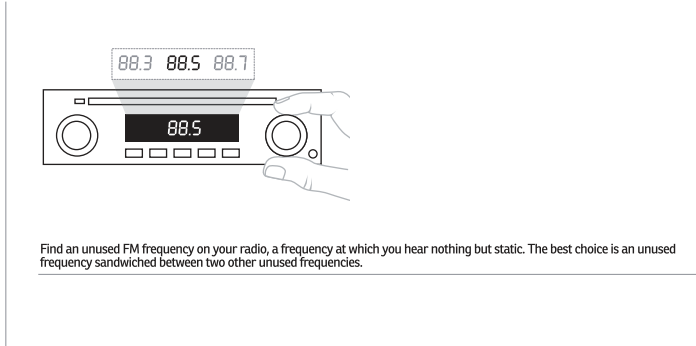
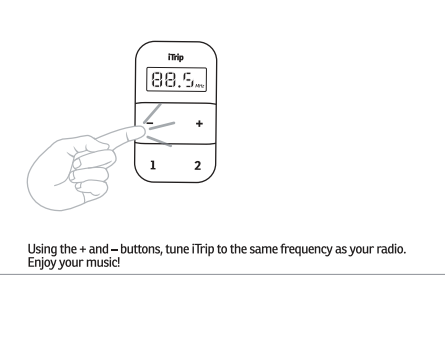


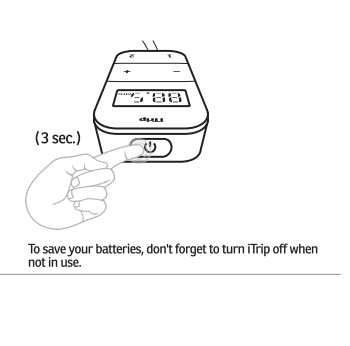
**Getting Started**  
Plug iTrip Universal into your audio player's headphone jack, turn it on, and start some music.



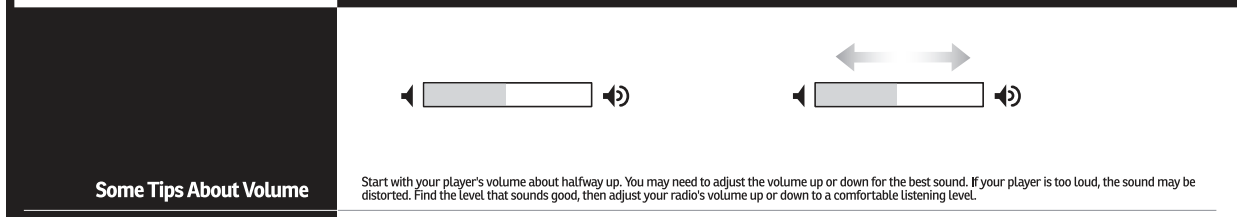
Find an unused FM frequency on your radio, a frequency at which you hear nothing but static. The best choice is an unused frequency sandwiched between two other unused frequencies.



Using the + and - buttons, tune iTrip to the same frequency as your radio. Enjoy your music!



To save your batteries, don't forget to turn iTrip off when not in use.



**Some Tips About Volume**  
Start with your player's volume about halfway up. You may need to adjust the volume up or down for the best sound. If your player is too loud, the sound may be distorted. Find the level that sounds good, then adjust your radio's volume up or down to a comfortable listening level.

**Presets**  
Found a favorite FM frequency that works well? You can save it as a Preset for quick recall!

Using the + and - buttons, tune iTrip to the frequency you want to save.

Press and hold (about 2 seconds) one of the Preset buttons, "M1" or "M2" will flash to indicate it is saved.

To recall a Preset, press the desired button.

**TROUBLESHOOTING:**  
Problem? No problem. Check these first:  
Check your music player:  
• Is it on and playing music?  
• Is the power or hold switch on?  
• Is the player's volume set about halfway up? If it's set too low, the sound may be distorted. If it's too low, you may not hear anything!  
Check your FM radio:  
• Is it on?  
• Is the radio volume adjusted?  
• Is it tuned to an unused frequency?  
Check your iTrip:  
• Is it tuned to the same frequency as your FM radio?  
• Are the batteries okay? If not, slide open the back and replace with 2 AAA batteries!  
• Is iTrip turned on?  
• Is iTrip plugged fully into your headphone jack?

**Questions?**  
Griffin Support Gurus are ready to help. Online or on the phone, you'll work with a real human being who actually knows and uses Griffin products.  
800-208-5996  
Mon - Thurs 9 AM - 6 PM, Fri 9 AM - 5 PM, Central Time  
www.grifintechnology.com/support  
Any time, day or night, all year 'round  
Identify our product as: iTrip Universal (AAA batteries)

**TROUBLESHOOTING:**  
Problem? No problem. Check these first:  
Check your music player:  
• Is it on and playing music?  
• Is the power or hold switch on?  
• Is the player's volume set about halfway up? If it's set too low, the sound may be distorted. If it's too low, you may not hear anything!  
Check your FM radio:  
• Is it on?  
• Is the radio volume adjusted?  
• Is it tuned to an unused frequency?  
Check your iTrip:  
• Is it tuned to the same frequency as your FM radio?  
• Are the batteries okay? If not, slide open the back and replace with 2 AAA batteries!  
• Is iTrip turned on?  
• Is iTrip plugged fully into your headphone jack?

**Questions?**  
Griffin Support Gurus are ready to help. Online or on the phone, you'll work with a real human being who actually knows and uses Griffin products.  
800-208-5996  
Mon - Thurs 9 AM - 6 PM, Fri 9 AM - 5 PM, Central Time  
www.grifintechnology.com/support  
Any time, day or night, all year 'round  
Identify our product as: iTrip Universal (AAA batteries)

**TROUBLESHOOTING:**  
Problem? No problem. Check these first:  
Check your music player:  
• Is it on and playing music?  
• Is the power or hold switch on?  
• Is the player's volume set about halfway up? If it's set too low, the sound may be distorted. If it's too low, you may not hear anything!  
Check your FM radio:  
• Is it on?  
• Is the radio volume adjusted?  
• Is it tuned to an unused frequency?  
Check your iTrip:  
• Is it tuned to the same frequency as your FM radio?  
• Are the batteries okay? If not, slide open the back and replace with 2 AAA batteries!  
• Is iTrip turned on?  
• Is iTrip plugged fully into your headphone jack?

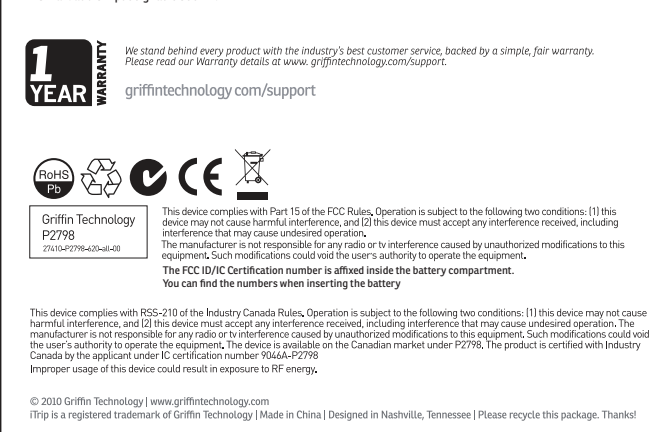
**Questions?**  
Griffin Support Gurus are ready to help. Online or on the phone, you'll work with a real human being who actually knows and uses Griffin products.  
800-208-5996  
Mon - Thurs 9 AM - 6 PM, Fri 9 AM - 5 PM, Central Time  
www.grifintechnology.com/support  
Any time, day or night, all year 'round  
Identify our product as: iTrip Universal (AAA batteries)

**NOTE:**  
Changes or Modifications not expressly approved by the party responsible could void the user's authority to operate this device.

**NOTE:** This equipment has been tested and found to comply with the limits for a Class B digital device, pursuant to Part 15 of the FCC Rules. These limits are designed to provide reasonable protection against harmful interference in a residential installation. This equipment generates, uses and can radiate radio frequency energy and, if not installed and used in accordance with the instructions, may cause harmful interference to radio communications. However, there is no guarantee that interference will not occur in a particular installation. If this equipment does cause harmful interference to radio or television reception, which can be determined by turning the equipment off and on, the user is encouraged to try to correct the interference by one or more of the following measures:  
-- Reorient or relocate the receiving antenna.  
-- Increase the separation between the equipment and receiver.  
-- Connect the equipment into an outlet on a circuit different from that to which the receiver is connected.  
-- Consult the dealer or an experienced radio/TV technician for help.

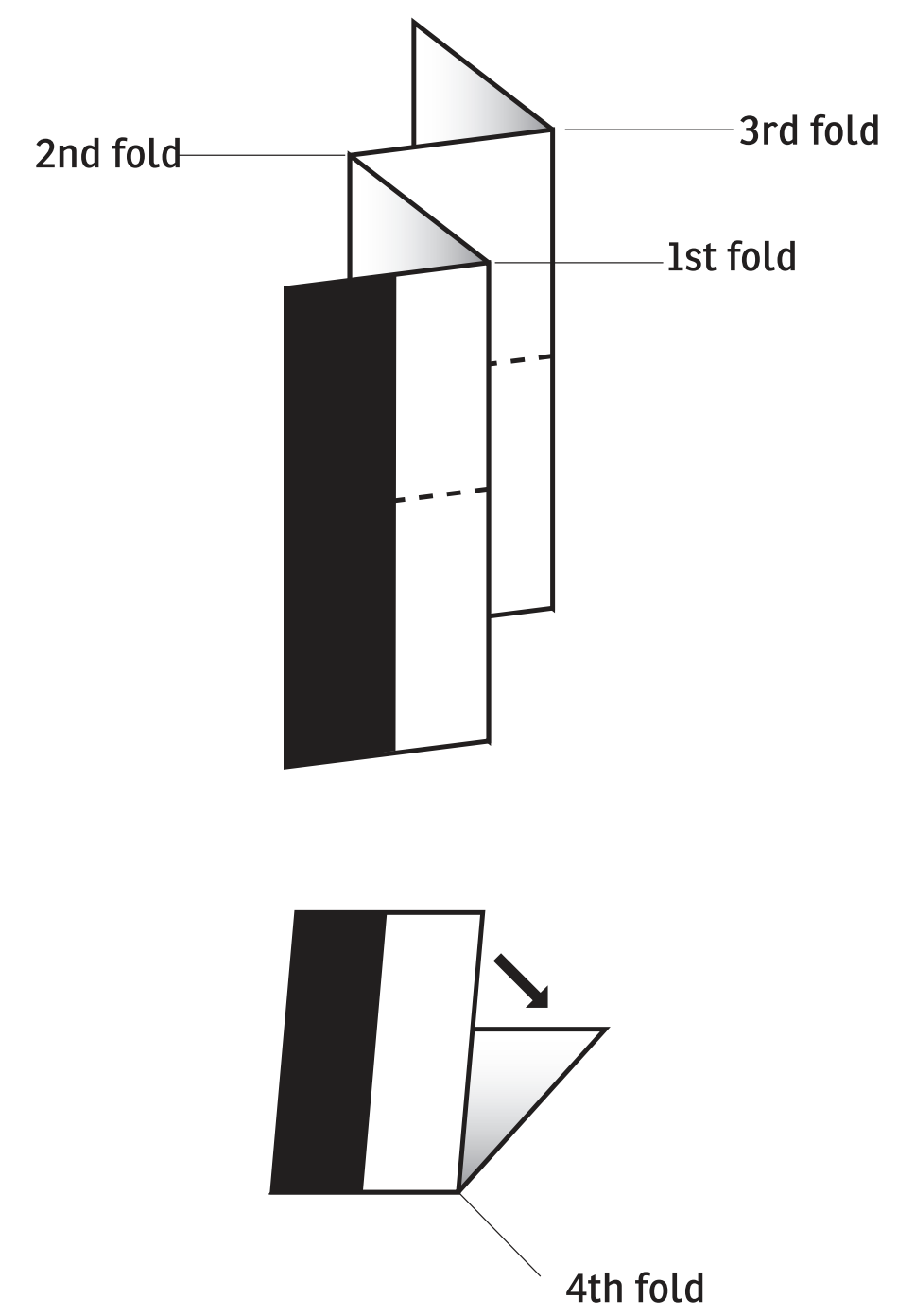
The max. audio input signal is 500mV.

**1 YEAR WARRANTY**  
We stand behind every product with the industry's best customer service, backed by a simple, fair warranty. Please read our warranty details at [www.grifintechnology.com/support](http://www.grifintechnology.com/support).



© 2008 Griffin Technology | [www.grifintechnology.com](http://www.grifintechnology.com)  
iTrip is a registered trademark of Griffin Technology | Made in China | Designed in Nashville, Tennessee | Please recycle this package. Thank!

**Folding Method**



**M001**  
Material : 100gsm woodfree paper  
Color : 1C (Black)  
Size : Before folded - 380 x 256 (mm)  
AFTER folded - 95 x 128 (mm)  
Folding : 4 times  
Total pages after folded : 16

**NA22051-P2798**  
**iTrip Universal, Black**  
**Ablelink**  
**BT02r1-0 | LK**  
**T010210 | UK**