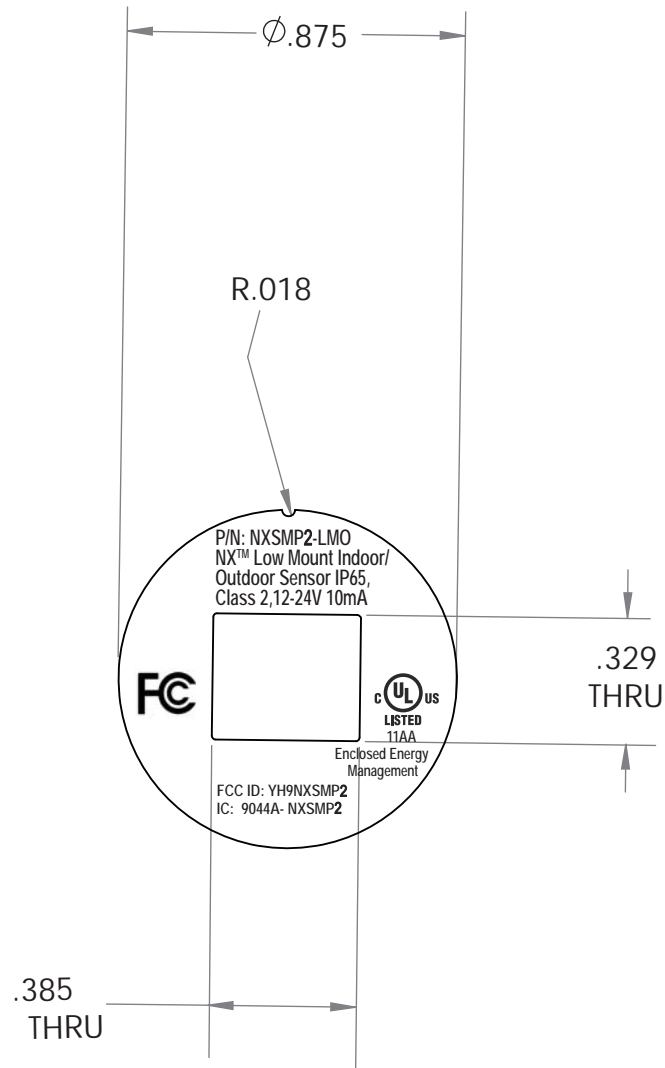


DR. NO.		SIZE: AD			
93147270					
SHEET	1	OF	1	REV	5
TITLE					
NXSMP2-HMO PRODUCT LABEL					
TOLERANCES UNLESS OTHERWISE SPECIFIED .XX = ± .01 .XXX = ± .005 .XXXX = ± .0025 ANGLE TOL. ± 1°		<div>DGHAL</div>			
		DR. BY Lilyxie		APP. BY	
		TR. BY		SCALE	
		CHK. BY		DATE 04-27-2021	
PROJECT NO.					
NXSMP2					

SUB	REVISIONS
2	09-14-2017, Lilyxie, HECN17-00774, Newly release.
3	12-18-2017, Lilyxie, HECN17-00993, Add FCC logo and FCC wording to drawing.
4	01-31-2018, Cheeham Yiu, HECN18-00078, ".875" was ".900".
5	04-27-2021, Lilyxie, HECN21-00242, NX™ was NX.
NOTE	1. Material: 25# PET+PP film, the raw material should be UL recognized.

DO NOT SCALE DRAWING
USE DIMENSIONS ONLY

"IN ACCEPTING OUR DRAWINGS OR BLUEPRINTS FOR QUOTATION OR OTHER PURPOSES, YOU AGREE NOT TO DISCLOSE TO OTHERS THE IDEAS, INFORMATION, OR DESIGNS THEREIN SHOWN, AND THAT YOU WILL MAKE NO USE OF OUR DRAWINGS OR BLUEPRINTS OR OF THE IDEAS, INFORMATION OR DESIGNS THEREIN SHOWN WITHOUT OUR PERMISSION."

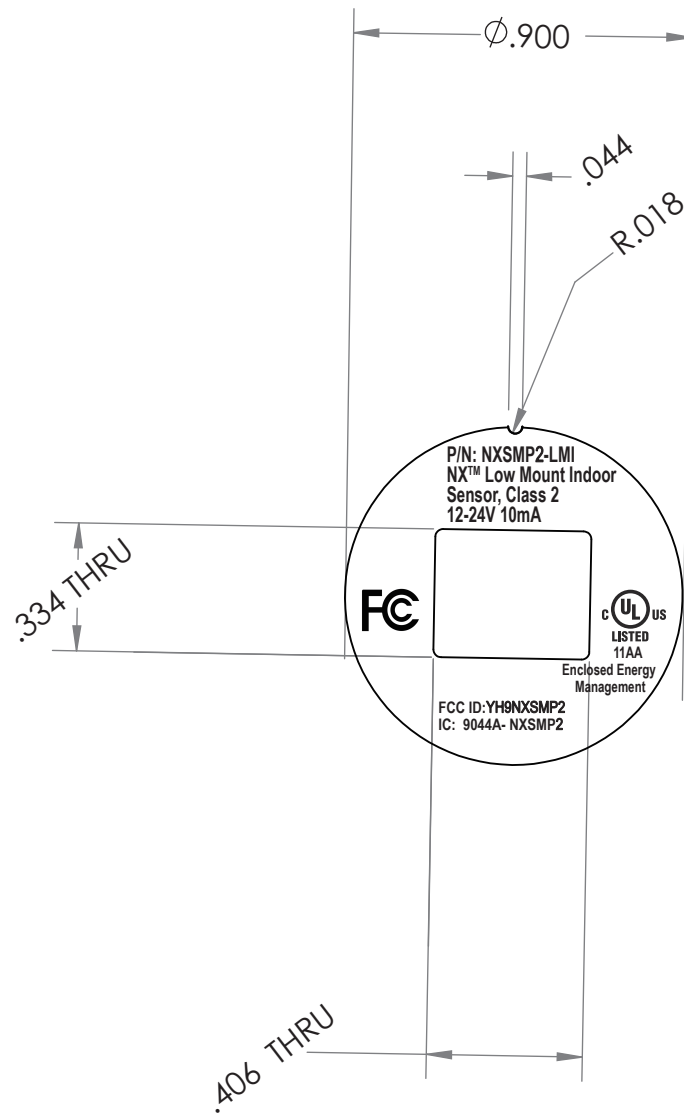


DR. NO.		SIZE: AD	
93147270			
SHEET	1	OF	1
		REV	5
TITLE			
NXSMP2-LMO PRODUCT LABEL			
TOLERANCES UNLESS OTHERWISE SPECIFIED .XX = ± .01 .XXX = ± .005 .XXXX = ± .0025 ANGLE TOL. ± 1°		<div>DGHAL</div>	
PROJECT NO.		DR. BY Lilyxie	APP. BY
NXSMP2		TR. BY	SCALE
		CHK. BY	DATE 04-27-2021

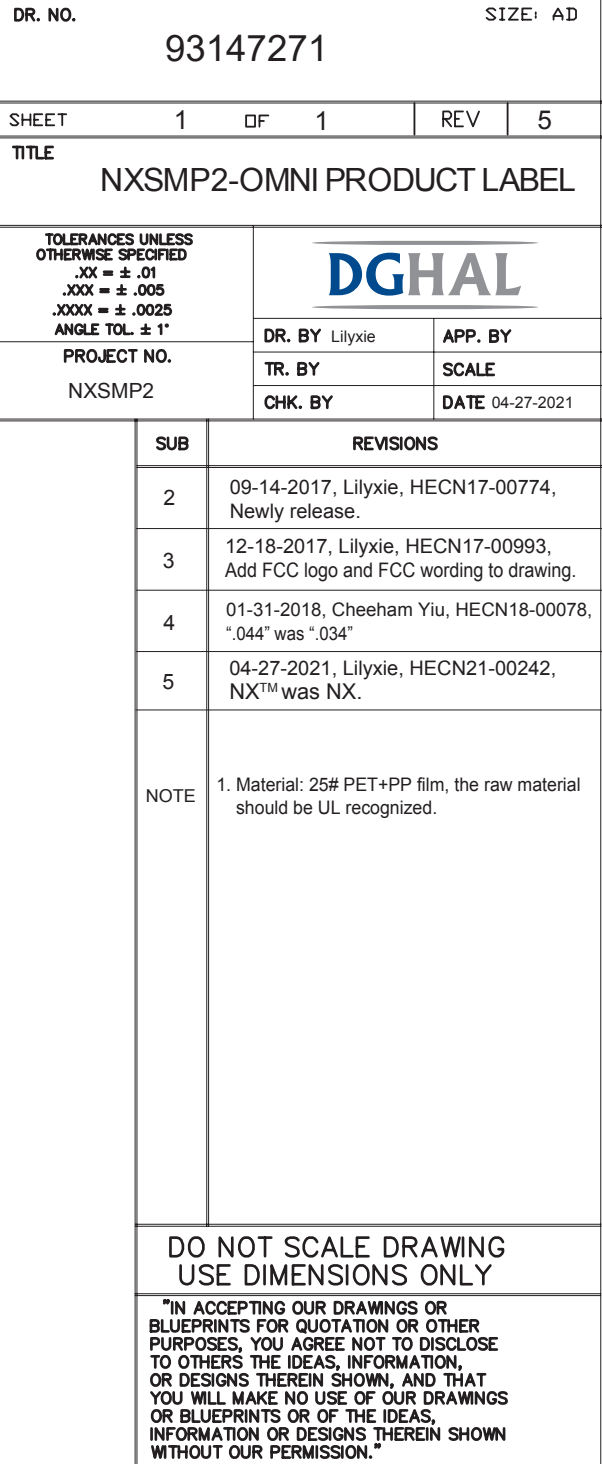
SUB	REVISIONS
2	09-14-2017, Lilyxie, HECN17-00774, Newly release.
3	12-18-2017, Lilyxie, HECN17-00993, Add FCC logo and FCC wording to drawing.
4	01-31-2018, Cheeham Yiu, HECN18-00078, ".875" was ".900".
5	04-27-2021, Lilyxie, HECN21-00242, NX™ was NX.
NOTE	1. Material: 25# PET+PP film, the raw material should be UL recognized.

DO NOT SCALE DRAWING
USE DIMENSIONS ONLY

"IN ACCEPTING OUR DRAWINGS OR BLUEPRINTS FOR QUOTATION OR OTHER PURPOSES, YOU AGREE NOT TO DISCLOSE TO OTHERS THE IDEAS, INFORMATION, OR DESIGNS THEREIN SHOWN, AND THAT YOU WILL MAKE NO USE OF OUR DRAWINGS OR BLUEPRINTS OR OF THE IDEAS, INFORMATION OR DESIGNS THEREIN SHOWN WITHOUT OUR PERMISSION."



DR. NO.		SIZE: AD				
93147269						
SHEET		1	OF	1	REV	5
TITLE						
LBL PROD NXSMP2-LMI						
TOLERANCES UNLESS OTHERWISE SPECIFIED .XX = ± .01 .XXX = ± .005 .XXXX = ± .0025 ANGLE TOL. ± 1°		<div>DGHAL</div>				
		DR. BY Lilyxie		APP. BY		
PROJECT NO. NXSMP2		TR. BY		SCALE		
		CHK. BY		DATE 04-27-2021		
		SUB	REVISIONS			
		2	09-14-2017, Lilyxie, HECN17-00774, Newly release.			
		3	12-18-2017, Lilyxie, HECN17-00993, Add FCC logo and FCC wording to drawing.			
		4	01-31-2018, Cheeham Yiu, HECN18-00078, ".044" was ".036" .			
		5	04-27-2021, Lilyxie, HECN21-00242, NX™ was NX.			
		NOTE	1. Material: 25# PET+PP film, the raw material should be UL recognized.			
DO NOT SCALE DRAWING USE DIMENSIONS ONLY						
"IN ACCEPTING OUR DRAWINGS OR BLUEPRINTS FOR QUOTATION OR OTHER PURPOSES, YOU AGREE NOT TO DISCLOSE TO OTHERS THE IDEAS, INFORMATION, OR DESIGNS THEREIN SHOWN, AND THAT YOU WILL MAKE NO USE OF OUR DRAWINGS OR BLUEPRINTS OR OF THE IDEAS, INFORMATION OR DESIGNS THEREIN SHOWN WITHOUT OUR PERMISSION."						



SIZE: AD

SHEET

1

•

REV

5

TITLE

NXSMP2-OMNI PRODUCT LABEL

TOLERANCES UNLESS OTHERWISE SPECIFIED
.XX = ± .01
.XXX = ± .005
.XXXX = ± .0025
ANGLE TOL. ± 1°

DGHAL

DR. BY Lilyxie

APP. BY

PROJECT NO.

TR. BY

SCALE

NXSMP2

CHK. BY

DATE 04-27-2021

SUB

REVISIONS

2

09-14-2017, Lilyxie, HECN17-00774,
Newly release.

3

12-18-2017, Lilyxie, HECN17-00993,
Add FCC logo and FCC wording to drawing.

4

01-31-2018, Cheeham Yiu, HECN18-00078,
".044" was ".034"

5

04-27-2021, Lilyxie, HECN21-00242,
NX™ was NX.

NOTE

1. Material: 25# PET+PP film, the raw material should be UL recognized.

DO NOT SCALE DRAWING
USE DIMENSIONS ONLY

"IN ACCEPTING OUR DRAWINGS OR BLUEPRINTS FOR QUOTATION OR OTHER PURPOSES, YOU AGREE NOT TO DISCLOSE TO OTHERS THE IDEAS, INFORMATION, OR DESIGNS THEREIN SHOWN, AND THAT YOU WILL MAKE NO USE OF OUR DRAWINGS OR BLUEPRINTS OR OF THE IDEAS, INFORMATION OR DESIGNS THEREIN SHOWN WITHOUT OUR PERMISSION."

