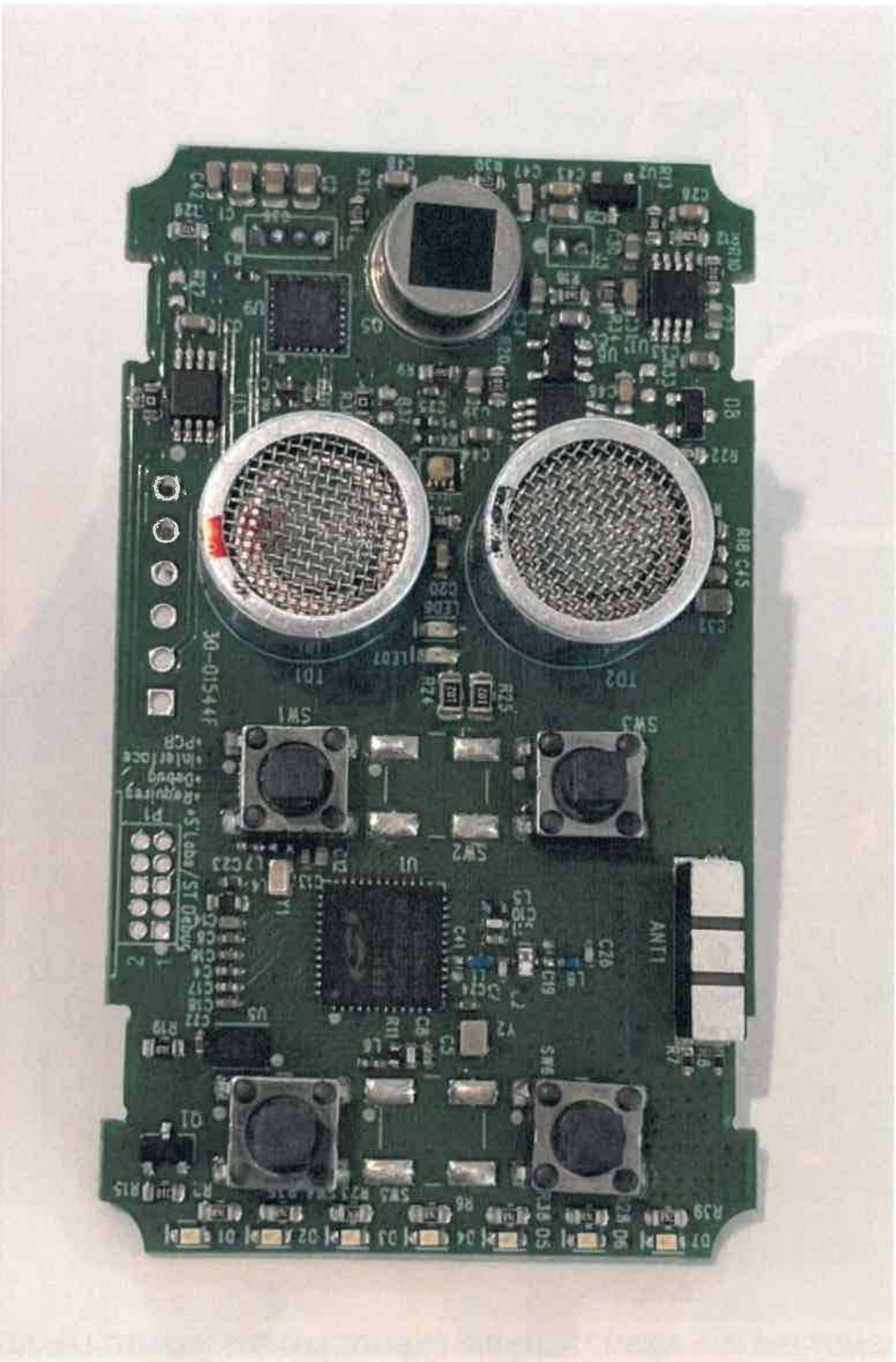




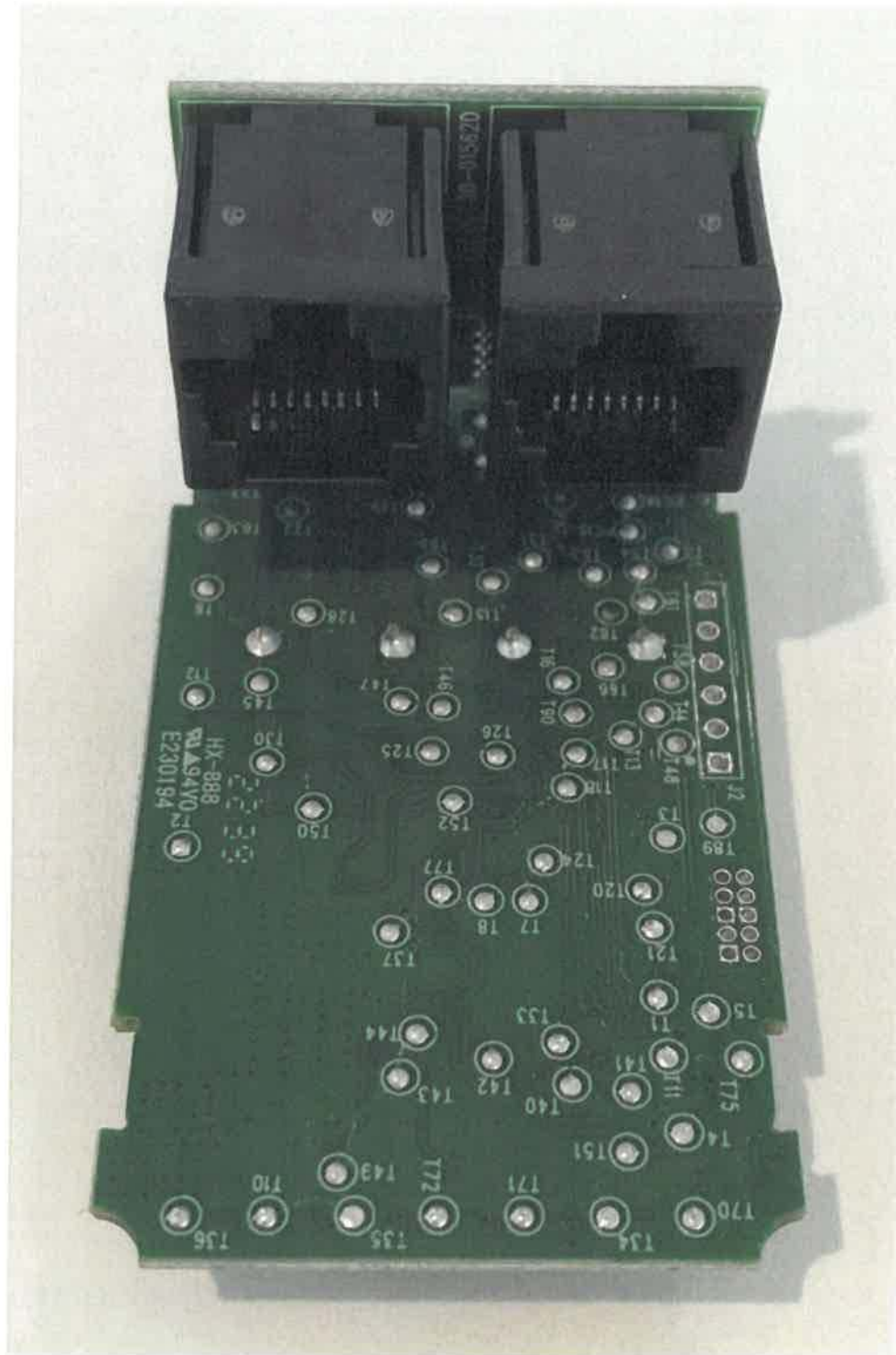
PCBs used for: NXSMDT-LH0-WH; NXSMDT-LH0-BK; NXSMDT-LH0-GY; NXSMDT-LH0-RD; NXSMDT-LH0-LA; NXSMDT-LH0-IV; NXSMDT-LH1-WH; NXSMDT-LH1-BK; NXSMDT-LH1-GY; NXSMDT-LH1-RD; NXSMDT-LH1-LA; NXSMDT-LH1-IV



PCBs used for: NXSM-DT-LH0-WH; NXSM-DT-LH0-BK; NXSM-DT-LH0-GY; NXSM-DT-LH0-RD; NXSM-DT-LH0-LA; NXSM-DT-LH0-IV; NXSM-DT-LH1-WH; NXSM-DT-LH1-BK; NXSM-DT-LH1-GY; NXSM-DT-LH1-RD; NXSM-DT-LH1-LA; NXSM-DT-LH1-IV



PCBs for: NXSMdT-LH2-WH; NXSMdT-LH2-BK; NXSMdT-LH2-GY; NXSMdT-LH2-RD; NXSMdT-LH2-LA; NXSMdT-LH2-IV



This side of the PCBs is identical for all variants.



PCBs for: NXSMDT-LH2-WH; NXSMDT-LH2-BK; NXSMDT-LH2-GY; NXSMDT-LH2-RD; NXSMDT-LH2-LA; NXSMDT-LH2-IV



Back housing and metal bracket identical for all variants. Front plastic in this picture, for reference, is NXSMDT-LH2-WH



Back housing and metal bracket identical for all variants. Label, for reference, is NXSMDT-LH1-WH



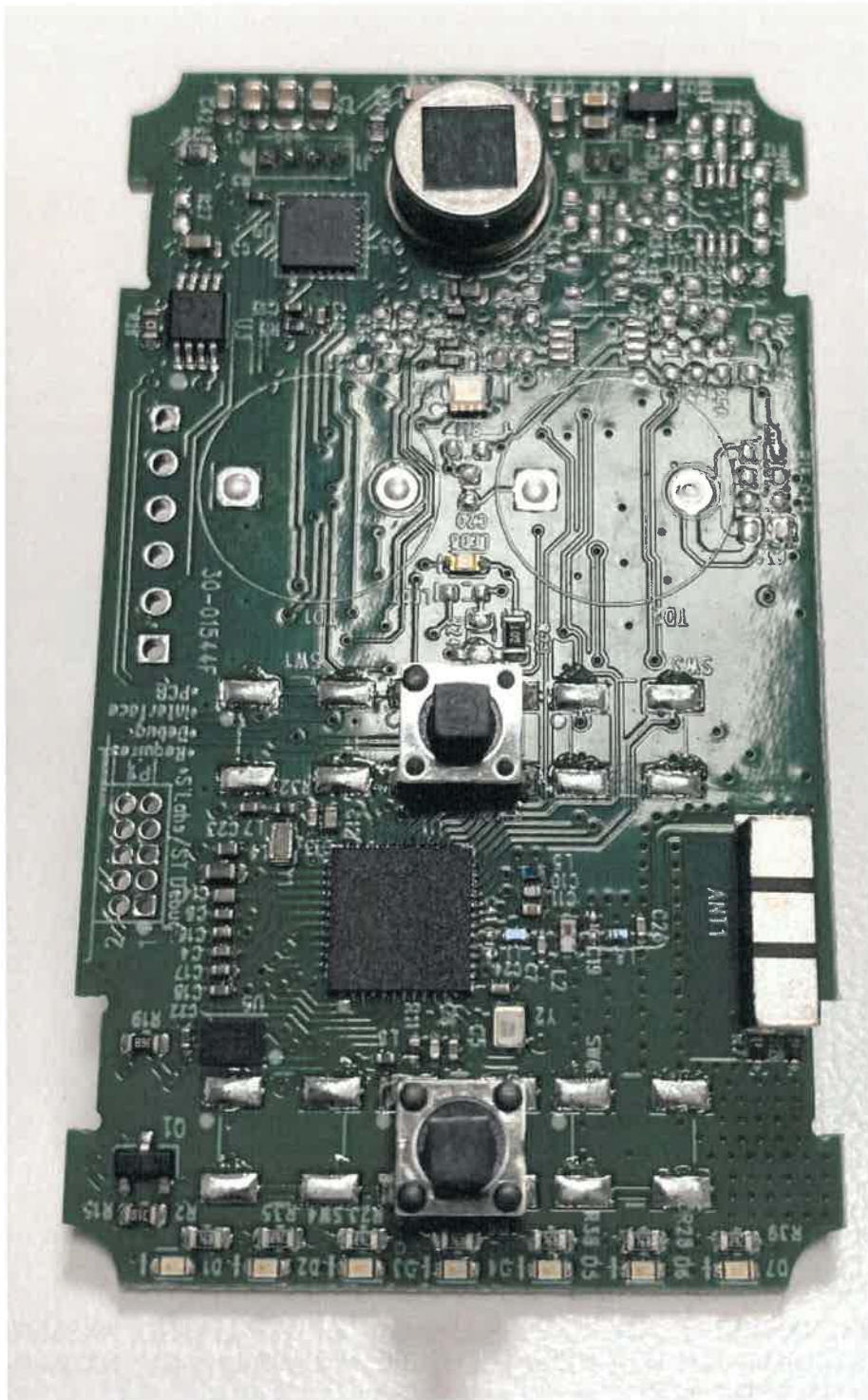
Metal bracket identical for all variants. Front plastic in this picture, for reference, is NXSMIR-LH2-BK



Back housing and metal bracket identical for all variants. Front plastic in this picture, for reference, is NXSMIR-LH2-BK



PCBs for NXSMIR-LH0-WH; NXSMIR-LH0-BK; NXSMIR-LH0-GY; NXSMIR-LH0-RD; NXSMIR-LH0-LA; NXSMIR-LH0-IV; NXSMIR-LH1-WH; NXSMIR-LH1-BK; NXSMIR-LH1-GY; NXSMIR-LH1-RD; NXSMIR-LH1-LA; NXSMIR-LH1-IV



PCBs for NXSMIR-LH0-WH; NXSMIR-LH0-BK; NXSMIR-LH0-GY; NXSMIR-LH0-RD; NXSMIR-LH0-LA; NXSMIR-LH0-IV; NXSMIR-LH1-WH; NXSMIR-LH1-BK; NXSMIR-LH1-GY; NXSMIR-LH1-RD; NXSMIR-LH1-LA; NXSMIR-LH1-IV



PCBs for NXSMIR-LH2-WH; NXSMIR-LH2-BK; NXSMIR-LH2-GY; NXSMIR-LH2-RD;
NXSMIR-LH2-LA; NXSMIR-LH2-IV



PCBs for NXSMIR-LH2-WH; NXSMIR-LH2-BK; NXSMIR-LH2-GY; NXSMIR-LH2-RD;
NXSMIR-LH2-LA; NXSMIR-LH2-IV