



Andrei Cosara
 Senior Group Manger
 +1 737 443 3818
 andrei.cosara@currentlighting.
 com

NXSMDT-LH and NXSMIR-LH Part Number Variations

The NXSMDT-LH and NXSMIR-LH can be populated with no switches, 1 rocker switch or two rocker switches. The PCBs are identical, just different plastic gets placed and different switches are populated. They also come if different colours of plastics. Here is a list of all the part numbers depending on the base model, number of switches and colour:

Model	No switch part #s	1 switch part #s	2 switch part #s
NXSMDT-LH	NXSMDT-LH0-WH	NXSMDT-LH1-WH	NXSMDT-LH2-WH
	NXSMDT-LH0-BK	NXSMDT-LH1-BK	NXSMDT-LH2-BK
	NXSMDT-LH0-GY	NXSMDT-LH1-GY	NXSMDT-LH2-GY
	NXSMDT-LH0-RD	NXSMDT-LH1-RD	NXSMDT-LH2-RD
	NXSMDT-LH0-LA	NXSMDT-LH1-LA	NXSMDT-LH2-LA
	NXSMDT-LH0-IV	NXSMDT-LH1-IV	NXSMDT-LH2-IV
NXSMIR-LH	NXSMIR-LH0-WH	NXSMIR-LH1-WH	NXSMIR-LH2-WH
	NXSMIR-LH0-BK	NXSMIR-LH1-BK	NXSMIR-LH2-BK
	NXSMIR-LH0-GY	NXSMIR-LH1-GY	NXSMIR-LH2-GY
	NXSMIR-LH0-RD	NXSMIR-LH1-RD	NXSMIR-LH2-RD
	NXSMIR-LH0-LA	NXSMIR-LH1-LA	NXSMIR-LH2-LA
	NXSMIR-LH0-IV	NXSMIR-LH1-IV	NXSMIR-LH2-IV

The next pages will describe the hardware that is common for multiple part numbers. Photos of the front plastics for every single product part number are submitted separately as part of the supporting documents.

Dated: 1/13/2023

Signed:

Printed name: Andrei Cosara

Title: Sr Group Manager

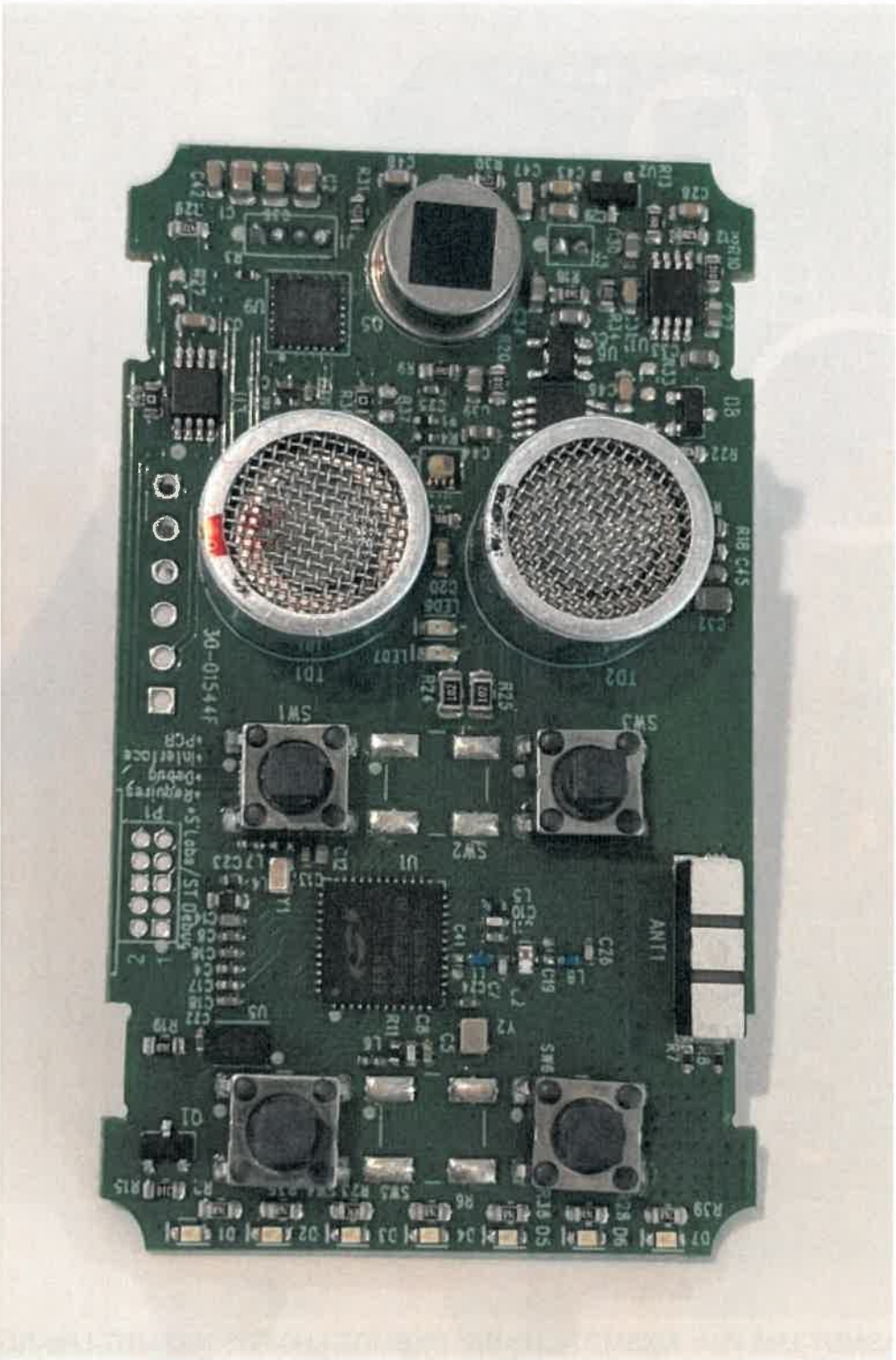
On behalf of: HLI Solutions



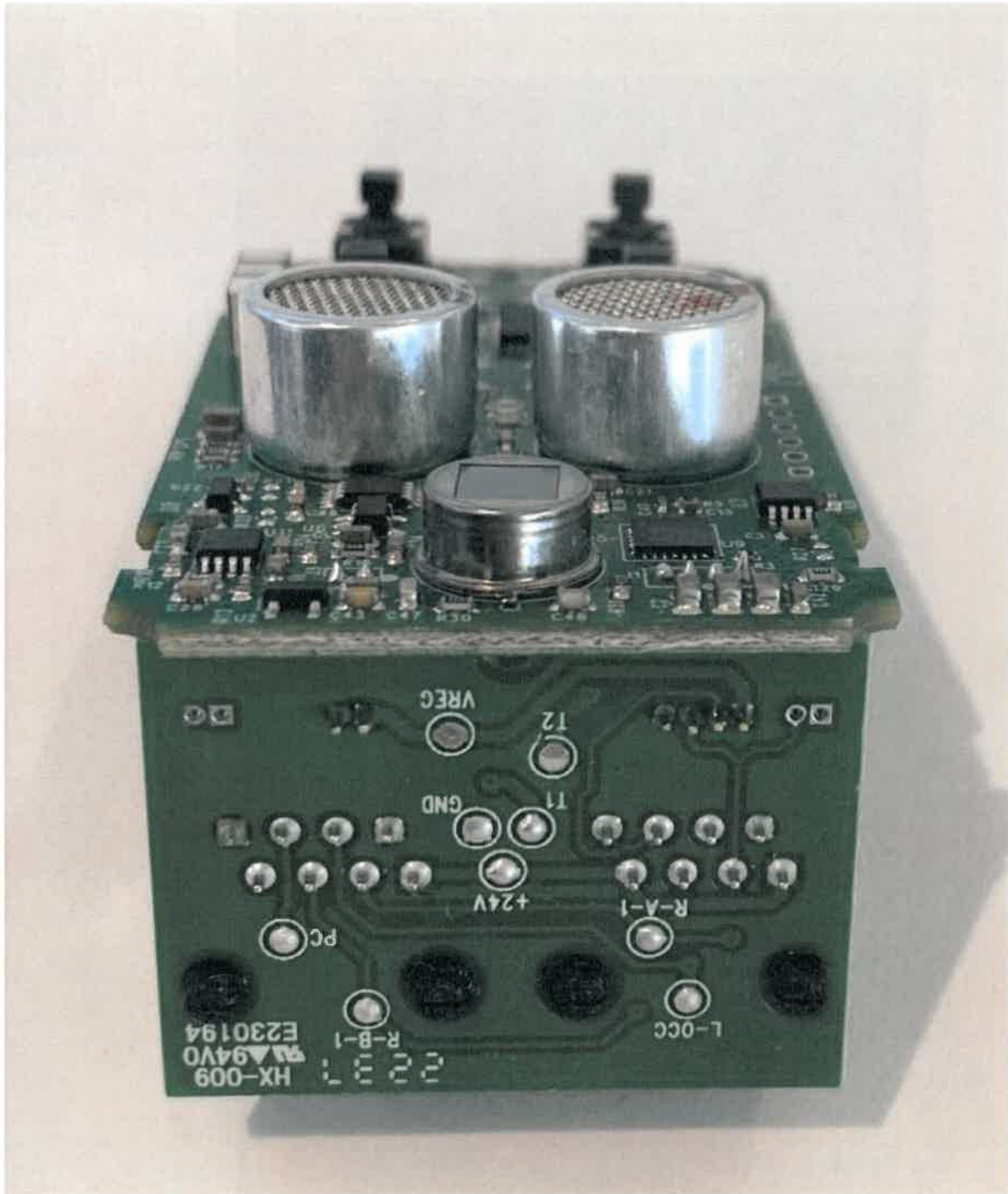
PCBs used for: NXSMDT-LH0-WH; NXSMDT-LH0-BK; NXSMDT-LH0-GY; NXSMDT-LH0-RD; NXSMDT-LH0-LA; NXSMDT-LH0-IV; NXSMDT-LH1-WH; NXSMDT-LH1-BK; NXSMDT-LH1-GY; NXSMDT-LH1-RD; NXSMDT-LH1-LA; NXSMDT-LH1-IV



PCBs used for: NXSMDT-LH0-WH; NXSMDT-LH0-BK; NXSMDT-LH0-GY; NXSMDT-LH0-RD;
NXSMDT-LH0-LA; NXSMDT-LH0-IV; NXSMDT-LH1-WH; NXSMDT-LH1-BK; NXSMDT-LH1-GY;
NXSMDT-LH1-RD; NXSMDT-LH1-LA; NXSMDT-LH1-IV



PCBs for: NXSMDT-LH2-WH; NXSMDT-LH2-BK; NXSMDT-LH2-GY; NXSMDT-LH2-RD;
NXSMDT-LH2-LA; NXSMDT-LH2-IV



PCBs for: NXSMDT-LH2-WH; NXSMDT-LH2-BK; NXSMDT-LH2-GY; NXSMDT-LH2-RD; NXSMDT-LH2-LA; NXSMDT-LH2-IV



Back housing and metal bracket identical for all variants. Front plastic in this picture, for reference, is NXSMDT-LH2-WH



Back housing and metal bracket identical for all variants. Label, for reference, is NXSMDT-LH1-WH



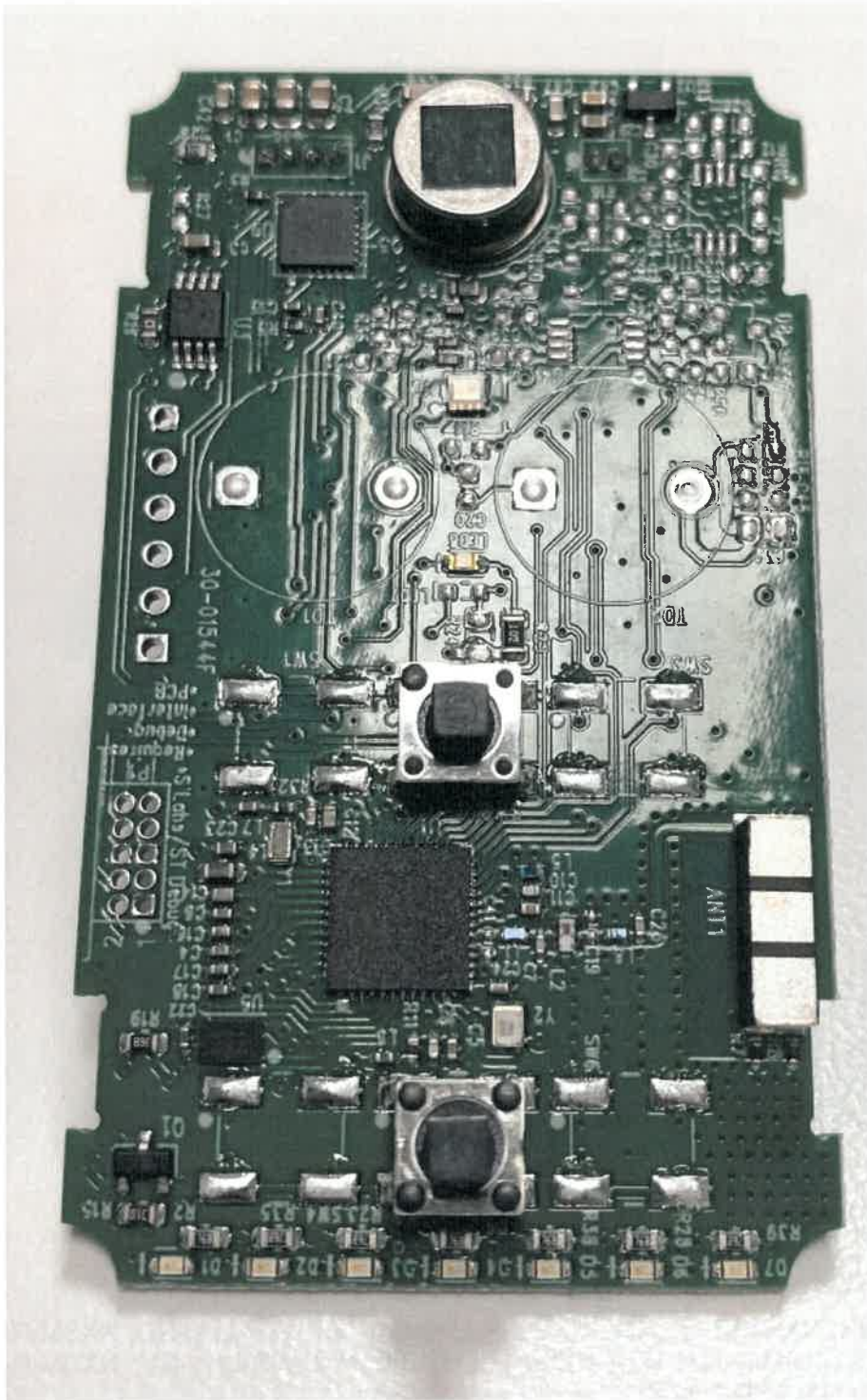
Metal bracket identical for all variants. Front plastic in this picture, for reference, is NXSMIR-LH2-BK



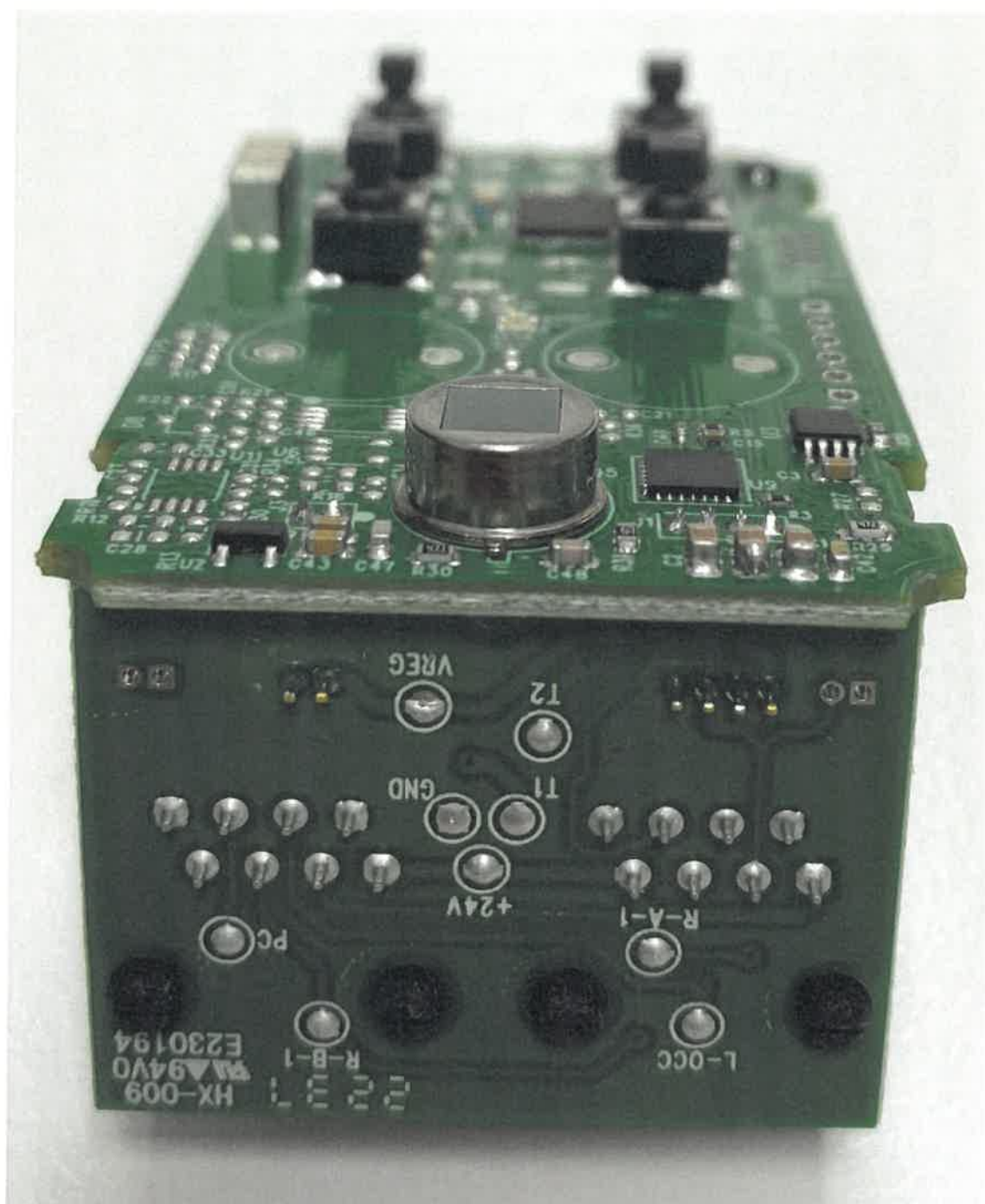
Back housing and metal bracket identical for all variants. Front plastic in this picture, for reference, is NXSMIR-LH2-BK



PCBs for NXSMIR-LH0-WH; NXSMIR-LH0-BK; NXSMIR-LH0-GY; NXSMIR-LH0-RD; NXSMIR-LH0-LA; NXSMIR-LH0-IV; NXSMIR-LH1-WH; NXSMIR-LH1-BK; NXSMIR-LH1-GY; NXSMIR-LH1-RD; NXSMIR-LH1-LA; NXSMIR-LH1-IV



PCBs for NXSMIR-LH0-WH; NXSMIR-LH0-BK; NXSMIR-LH0-GY; NXSMIR-LH0-RD; NXSMIR-LH0-LA; NXSMIR-LH0-IV; NXSMIR-LH1-WH; NXSMIR-LH1-BK; NXSMIR-LH1-GY; NXSMIR-LH1-RD; NXSMIR-LH1-LA; NXSMIR-LH1-IV



PCBs for NXSMIR-LH2-WH; NXSMIR-LH2-BK; NXSMIR-LH2-GY; NXSMIR-LH2-RD;
NXSMIR-LH2-LA; NXSMIR-LH2-IV



PCBs for NXSMIR-LH2-WH; NXSMIR-LH2-BK; NXSMIR-LH2-GY; NXSMIR-LH2-RD;
NXSMIR-LH2-LA; NXSMIR-LH2-IV