

Circuit Description

1. IC: U1 is a bluetooth module of the keyboard, the oscillator is generated the 24MHz clock signal to it, the operator operating the keyboard via the key-press, and the control signal input to the control unit, the radio frequency out is from 2402 to 2480MHz.
2. IC: U4 is a EEPROM as a memory of the circuit.
3. The working voltage is 3.7V by the battery, and the keyboard with three LED indicators.
4. USB Port is charging for the battery.

Antenna Specification:

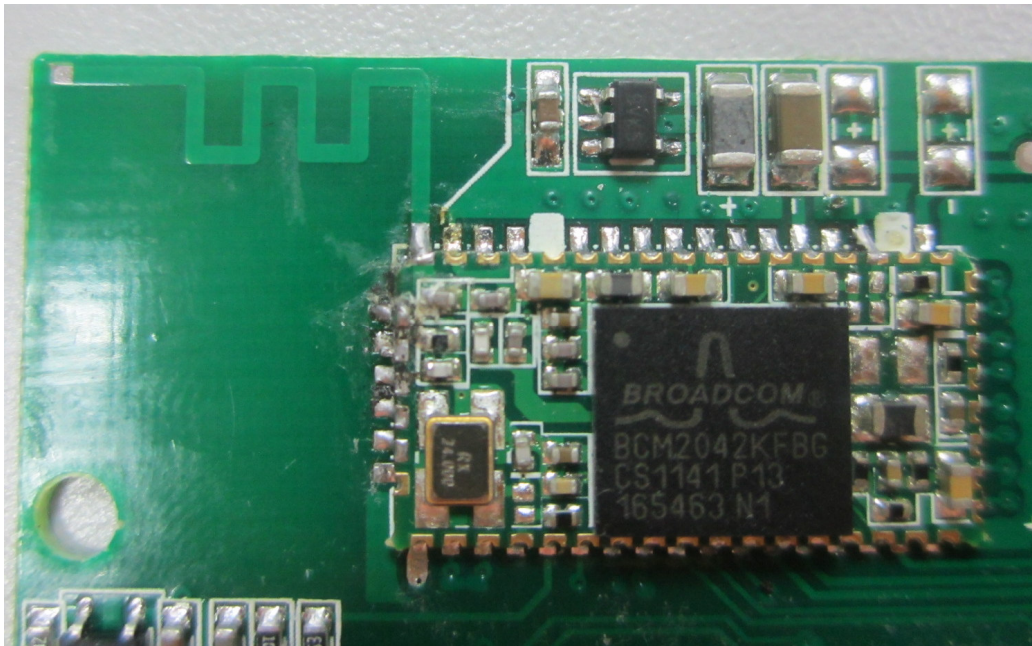
Type of Antenna: PCB Antenna

Frequency Range: 2400-2483.5MHz

Maximum Gain: 0 dBi

Impedance: 50 ohm

Antenna View



Placement of Antenna

