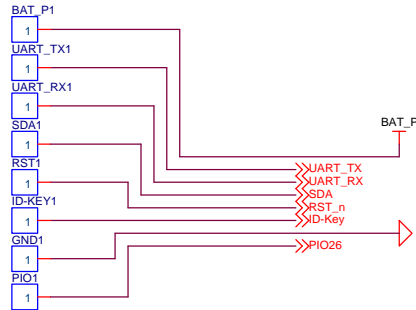


DATE	Rev	Description	Page
20120615	V0.1	Original	
20121108	V0.2	Add a 10uF capacity on VB-OUT(U1).	

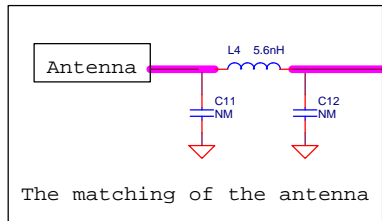
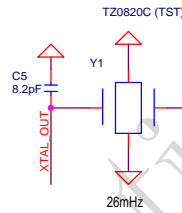
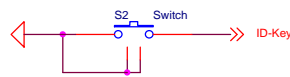
Confidential For
 AVANT-COM

Title AB1107_KB_8x18_TWO BAT			
Size B	Document Number		Rev 0.2
Date: Thursday, November 08, 2012 Sheet 1 of 3			

MP Interface

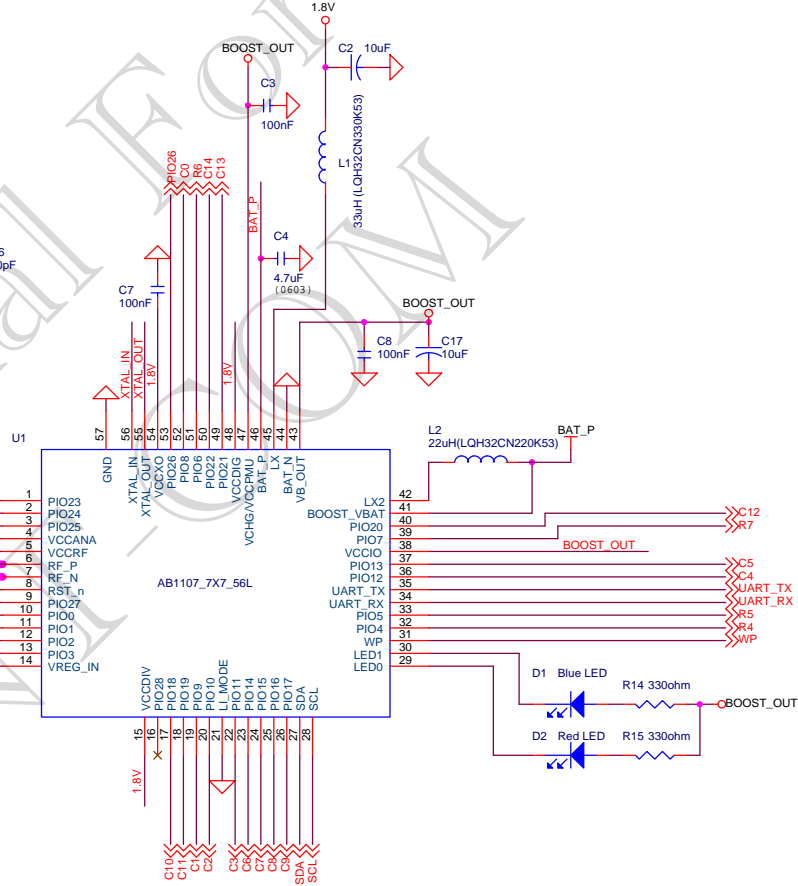


ID-Key

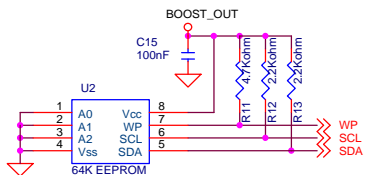


The matching of the antenna

- The impedance of RF trace must be about 50 ohm.
- L3, C10, L5, C13 and L6 must place as close as possible to U1_pin6/pin7.



EEPROM

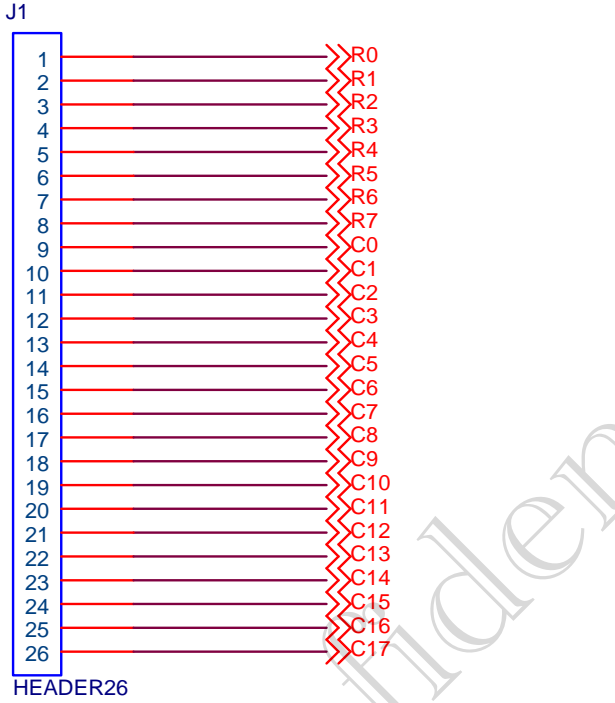


[NOTE]

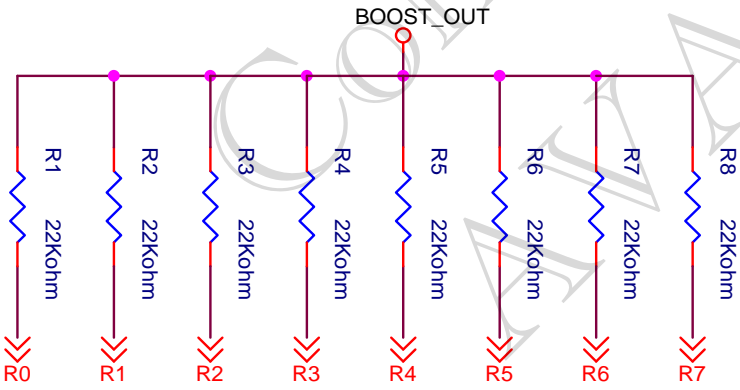
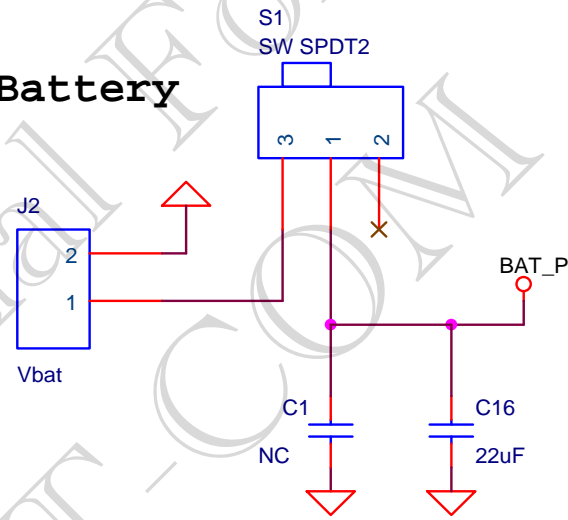
- ROW_0~ROW_7: Input pin and Pull high to BOOST_OUT with 22Kohm.
- ROW_0~ROW_7 correspond to PIO0~PIO7.
- COL_0~COL_17: Output pin and correspond to PIO8~PIO25.
- PIO26 for 26MHz crystal trim.
- PIO27 for ID-Key.
- PIO28 could be used as input or output pin.

Title		
AB1107_KB_8x18_TWO BAT		
Size	Document Number	Rev
Custom		0.2
Date:	Thursday, November 08, 2012	Sheet 2 of 3

Keyboard Interface



Battery



Title		
AB1107_KB_8x18_TWO BAT		
Size	Document Number	Rev
Custom		0.2
Date:	Thursday, November 08, 2012	Sheet 3 of 3