

WiFi 802.11b -Body Front Low CH1 2
WiFi 802.11b -Body Front Middle CH6..... 3
WiFi 802.11b -Body Front High CH11 4
WiFi 802.11b -Body Rear Low CH1..... 5
WiFi 802.11b -Body Edge 1 Low CH1 6
WiFi 802.11b -Body Edge 4 Low CH1 7

Test Laboratory: Compliance Certification Services Inc.

Date: 1/8/2016

WiFi 802.11b -Body Front Low CH1

Communication System: UID 0, IEEE 802.11b (0); Communication System Band: ISM 2.4GHz Band;
Frequency: 2412 MHz; Duty Cycle: 1:1

Medium parameters used: $f = 2412$ MHz; $\sigma = 1.906$ S/m; $\epsilon_r = 51.861$; $\rho = 1000$ kg/m³

Room Ambient Temperature: 22°C; Liquid Temperature: 21.5°C

Phantom section: Flat Section

Measurement Standard: DASYS (IEEE/IEC/ANSI C63.19-2007)

DASY Configuration:

- Probe: EX3DV4 - SN3798; ConvF(7.08, 7.08, 7.08); Calibrated: 7/24/2015;
- Sensor-Surface: 2mm (Mechanical Surface Detection)
- Electronics: DAE4 Sn1245; Calibrated: 7/22/2015
- Phantom: ELI v4.0; Type: QDOVA001BB; Serial: TP:xxxx
- DASYS 52.8.8(1222);
- SEMCAD X Version 14.6.10 (7331)

WiFi/Body Front Low CH1/Area Scan (17x23x1): Measurement grid: dx=12mm, dy=12mm

Maximum value of SAR (measured) = 0.519 W/kg

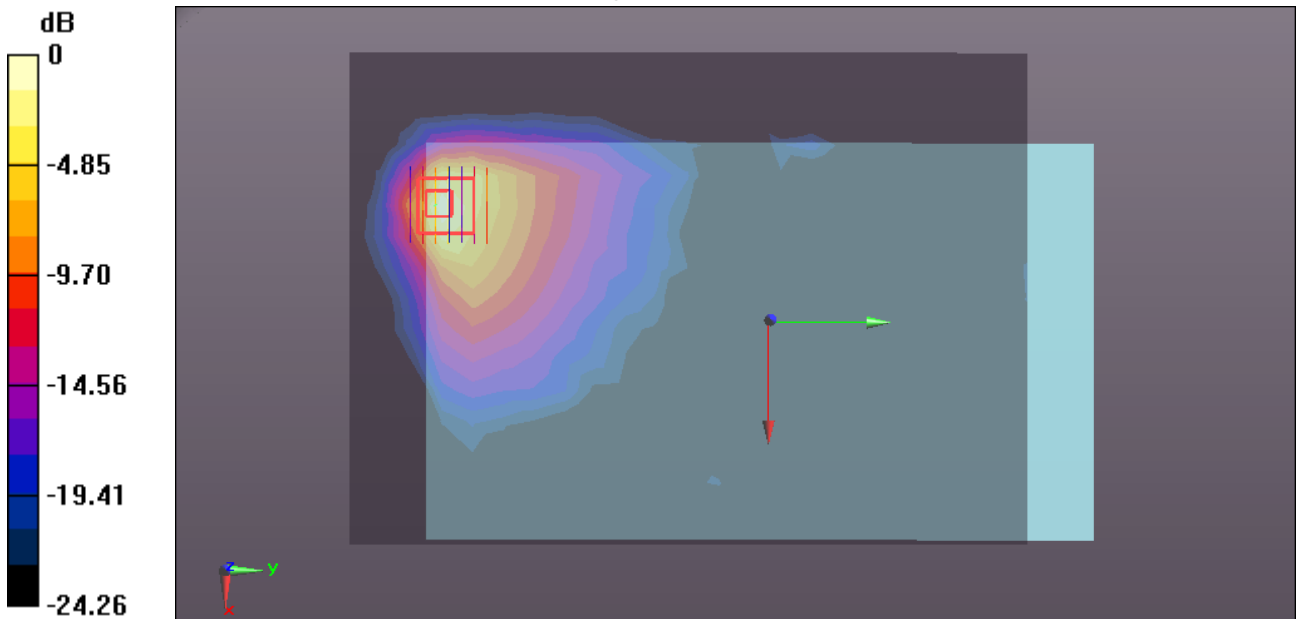
WiFi/Body Front Low CH1/Zoom Scan (7x7x5)/Cube 0: Measurement grid: dx=5mm, dy=5mm, dz=5mm

Reference Value = 0 V/m; Power Drift = 0.00 dB

Peak SAR (extrapolated) = 0.843 W/kg

SAR(1 g) = 0.315 W/kg; SAR(10 g) = 0.132 W/kg

Maximum value of SAR (measured) = 0.553 W/kg



0 dB = 0.553 W/kg = -2.57 dBW/kg

Test Laboratory: Compliance Certification Services Inc.

Date: 1/26/2016

WiFi 802.11b -Body Front Middle CH6

Communication System: UID 0, IEEE 802.11b (0); Communication System Band: ISM 2.4GHz Band;
Frequency: 2437 MHz; Duty Cycle: 1:1

Medium parameters used: $f = 2437$ MHz; $\sigma = 1.937$ S/m; $\epsilon_r = 51.701$; $\rho = 1000$ kg/m³

Room Ambient Temperature: 22°C; Liquid Temperature: 21.5°C

Phantom section: Flat Section

Measurement Standard: DASYS (IEEE/IEC/ANSI C63.19-2007)

DASY Configuration:

- Probe: EX3DV4 - SN3798; ConvF(7.08, 7.08, 7.08); Calibrated: 7/24/2015;
- Sensor-Surface: 2mm (Mechanical Surface Detection)
- Electronics: DAE4 Sn1245; Calibrated: 7/22/2015
- Phantom: ELI v4.0; Type: QDOVA001BB; Serial: TP:xxxx
- DASYS 52.8.8(1222);
- SEMCAD X Version 14.6.10 (7331)

WiFi/Body Front Middle CH6/Area Scan (12x11x1): Measurement grid: dx=12mm, dy=12mm

Maximum value of SAR (measured) = 0.360 W/kg

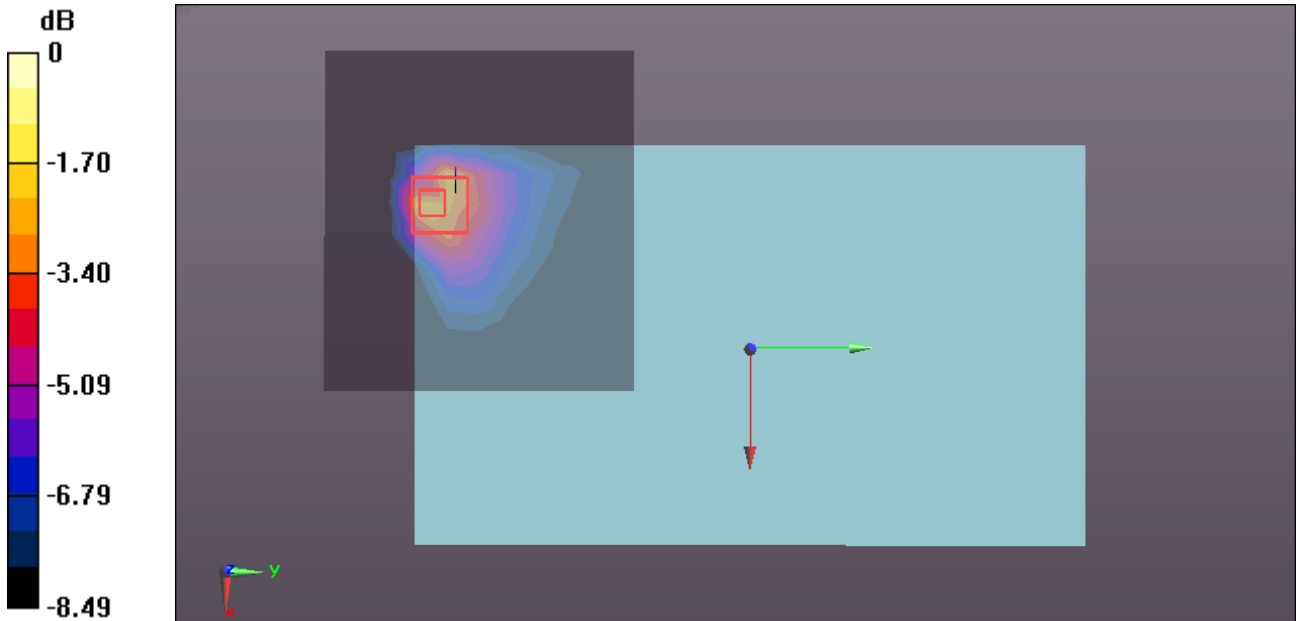
WiFi/Body Front Middle CH6/Zoom Scan (7x7x5)/Cube 0: Measurement grid: dx=5mm, dy=5mm, dz=5mm

Reference Value = 5.847 V/m; Power Drift = 0.12 dB

Peak SAR (extrapolated) = 0.561 W/kg

SAR(1 g) = 0.227 W/kg; SAR(10 g) = 0.117 W/kg

Maximum value of SAR (measured) = 0.421 W/kg



0 dB = 0.421 W/kg = -3.76 dBW/kg

Test Laboratory: Compliance Certification Services Inc.

Date: 1/26/2016

WiFi 802.11b -Body Front High CH11

Communication System: UID 0, IEEE 802.11b (0); Communication System Band: ISM 2.4GHz Band;
Frequency: 2462 MHz; Duty Cycle: 1:1

Medium parameters used: $f = 2462$ MHz; $\sigma = 1.963$ S/m; $\epsilon_r = 51.648$; $\rho = 1000$ kg/m³

Room Ambient Temperature: 22°C; Liquid Temperature: 21.5°C

Phantom section: Flat Section

Measurement Standard: DASYS (IEEE/IEC/ANSI C63.19-2007)

DASY Configuration:

- Probe: EX3DV4 - SN3798; ConvF(7.08, 7.08, 7.08); Calibrated: 7/24/2015;
- Sensor-Surface: 2mm (Mechanical Surface Detection)
- Electronics: DAE4 Sn1245; Calibrated: 7/22/2015
- Phantom: ELI v4.0; Type: QDOVA001BB; Serial: TP:xxxx
- DASYS 52.8.8(1222);
- SEMCAD X Version 14.6.10 (7331)

WiFi/Body Front High CH11/Area Scan (12x11x1): Measurement grid: dx=12mm, dy=12mm

Maximum value of SAR (measured) = 0.458 W/kg

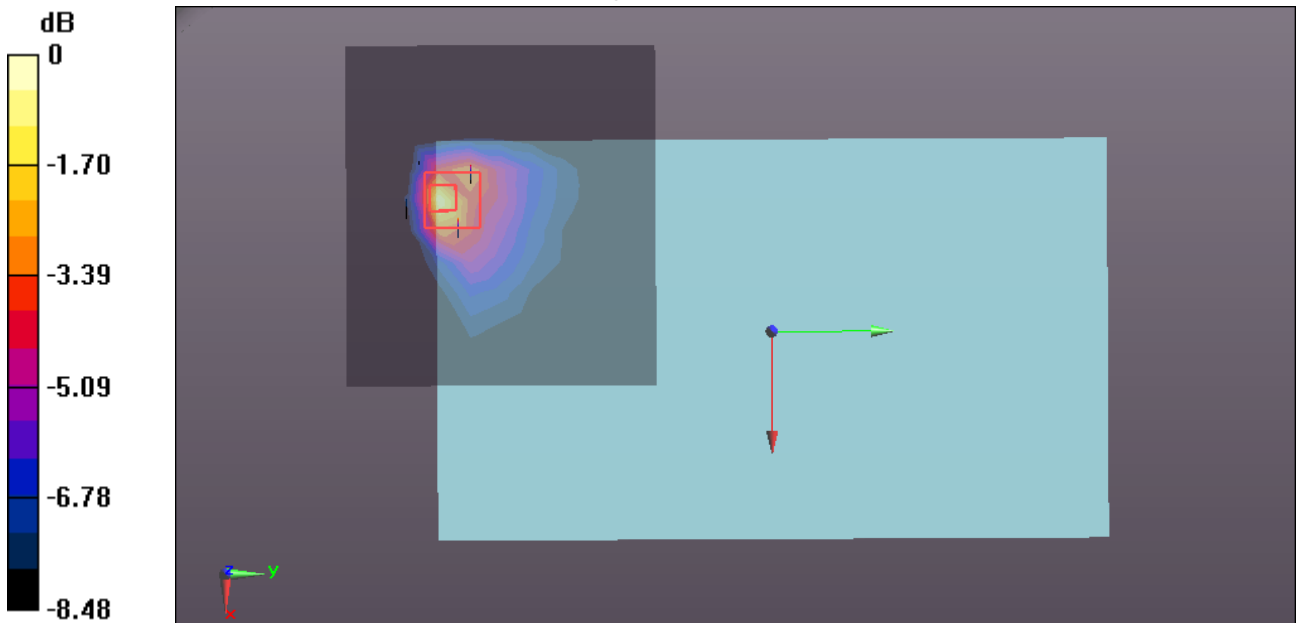
WiFi/Body Front High CH11/Zoom Scan (7x7x5)/Cube 0: Measurement grid: dx=5mm, dy=5mm, dz=5mm

Reference Value = 5.983 V/m; Power Drift = 0.11 dB

Peak SAR (extrapolated) = 0.585 W/kg

SAR(1 g) = 0.273 W/kg; SAR(10 g) = 0.134 W/kg

Maximum value of SAR (measured) = 0.457 W/kg



0 dB = 0.457 W/kg = -3.40 dBW/kg

Test Laboratory: Compliance Certification Services Inc.

Date: 1/8/2016

WiFi 802.11b -Body Rear Low CH1

Communication System: UID 0, IEEE 802.11b (0); Communication System Band: ISM 2.4GHz Band;
Frequency: 2412 MHz; Duty Cycle: 1:1

Medium parameters used: $f = 2412$ MHz; $\sigma = 1.906$ S/m; $\epsilon_r = 51.861$; $\rho = 1000$ kg/m³

Room Ambient Temperature: 22°C; Liquid Temperature: 21.5°C

Phantom section: Flat Section

Measurement Standard: DASYS (IEEE/IEC/ANSI C63.19-2007)

DASY Configuration:

- Probe: EX3DV4 - SN3798; ConvF(7.08, 7.08, 7.08); Calibrated: 7/24/2015;
- Sensor-Surface: 2mm (Mechanical Surface Detection)
- Electronics: DAE4 Sn1245; Calibrated: 7/22/2015
- Phantom: ELI v4.0; Type: QDOVA001BB; Serial: TP:xxxx
- DASYS 52.8.8(1222);
- SEMCAD X Version 14.6.10 (7331)

WiFi/Body Rear Low CH1/Area Scan (10x14x1): Measurement grid: dx=12mm, dy=12mm

Maximum value of SAR (measured) = 0.506 W/kg

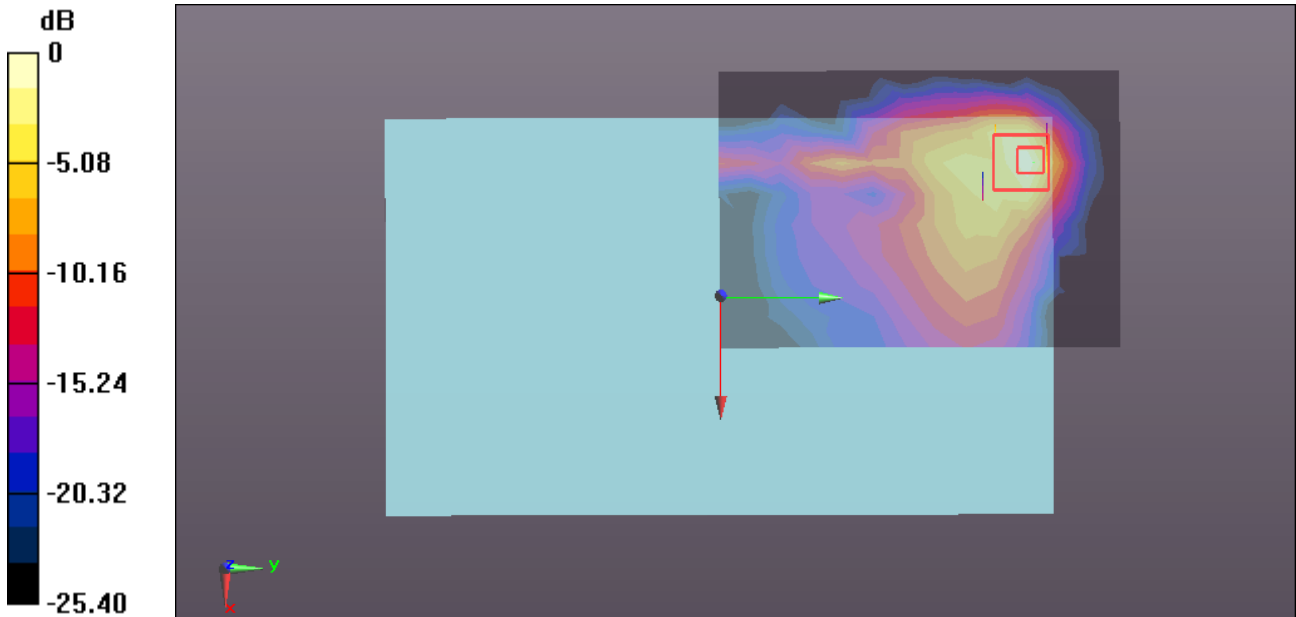
WiFi/Body Rear Low CH1/Zoom Scan (7x7x5)/Cube 0: Measurement grid: dx=5mm, dy=5mm, dz=5mm

Reference Value = 0 V/m; Power Drift = 0.00 dB

Peak SAR (extrapolated) = 0.789 W/kg

SAR(1 g) = 0.299 W/kg; SAR(10 g) = 0.122 W/kg

Maximum value of SAR (measured) = 0.510 W/kg



0 dB = 0.510 W/kg = -2.92 dBW/kg

Test Laboratory: Compliance Certification Services Inc.

Date: 1/8/2016

WiFi 802.11b -Body Edge 1 Low CH1

Communication System: UID 0, IEEE 802.11b (0); Communication System Band: ISM 2.4GHz Band;
Frequency: 2412 MHz; Duty Cycle: 1:1

Medium parameters used: $f = 2412$ MHz; $\sigma = 1.906$ S/m; $\epsilon_r = 51.861$; $\rho = 1000$ kg/m³

Room Ambient Temperature: 22°C; Liquid Temperature: 21.5°C

Phantom section: Flat Section

Measurement Standard: DASYS (IEEE/IEC/ANSI C63.19-2007)

DASY Configuration:

- Probe: EX3DV4 - SN3798; ConvF(7.08, 7.08, 7.08); Calibrated: 7/24/2015;
- Sensor-Surface: 2mm (Mechanical Surface Detection)
- Electronics: DAE4 Sn1245; Calibrated: 7/22/2015
- Phantom: ELI v4.0; Type: QDOVA001BB; Serial: TP:xxxx
- DASYS 52.8.8(1222);
- SEMCAD X Version 14.6.10 (7331)

WiFi/Body Edge 1 Low CH1/Area Scan (9x13x1): Measurement grid: dx=12mm, dy=12mm

Maximum value of SAR (measured) = 0.0262 W/kg

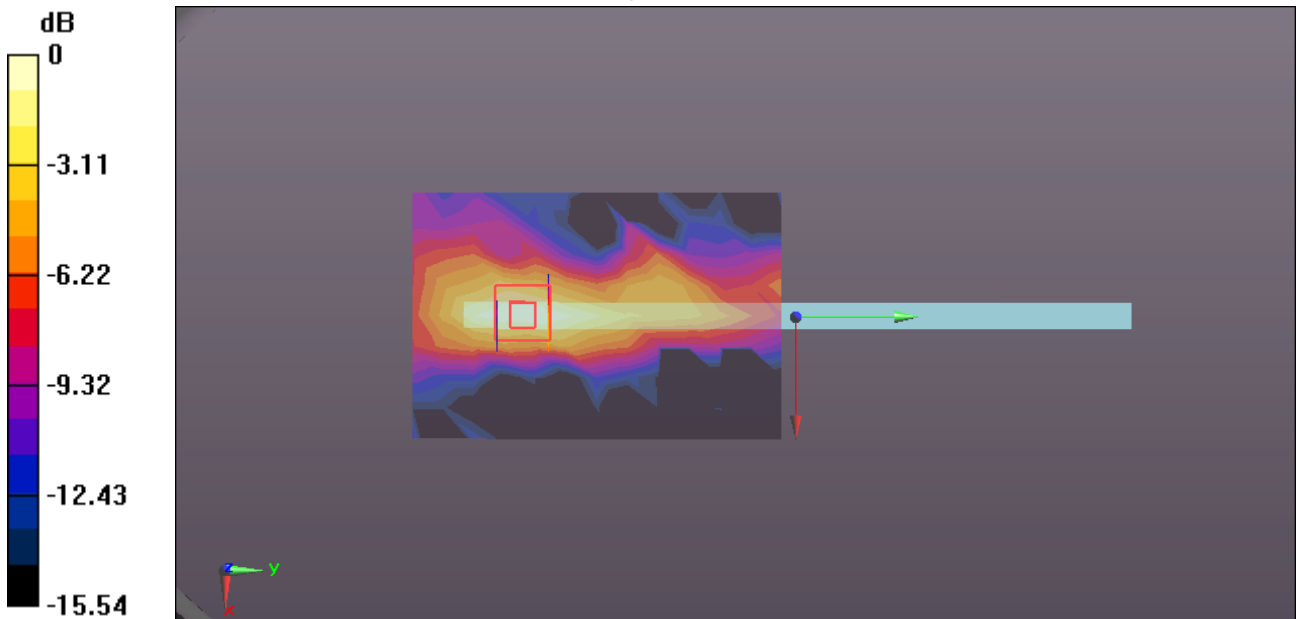
WiFi/Body Edge 1 Low CH1/Zoom Scan (7x7x5)/Cube 0: Measurement grid: dx=5mm, dy=5mm, dz=5mm

Reference Value = 0.6420 V/m; Power Drift = 0.08 dB

Peak SAR (extrapolated) = 0.0360 W/kg

SAR(1 g) = 0.018 W/kg; SAR(10 g) = 0.00939 W/kg

Maximum value of SAR (measured) = 0.0256 W/kg



0 dB = 0.0256 W/kg = -15.92 dBW/kg

Test Laboratory: Compliance Certification Services Inc.

Date: 1/8/2016

WiFi 802.11b -Body Edge 4 Low CH1

Communication System: UID 0, IEEE 802.11b (0); Communication System Band: ISM 2.4GHz Band;
Frequency: 2412 MHz; Duty Cycle: 1:1

Medium parameters used: $f = 2412$ MHz; $\sigma = 1.906$ S/m; $\epsilon_r = 51.861$; $\rho = 1000$ kg/m³

Room Ambient Temperature: 22°C; Liquid Temperature: 21.5°C

Phantom section: Flat Section

Measurement Standard: DASYS (IEEE/IEC/ANSI C63.19-2007)

DASY Configuration:

- Probe: EX3DV4 - SN3798; ConvF(7.08, 7.08, 7.08); Calibrated: 7/24/2015;
- Sensor-Surface: 2mm (Mechanical Surface Detection)
- Electronics: DAE4 Sn1245; Calibrated: 7/22/2015
- Phantom: ELI v4.0; Type: QDOVA001BB; Serial: TP:xxxx
- DASYS 52.8.8(1222);
- SEMCAD X Version 14.6.10 (7331)

WiFi/Body Edge 4 Low CH1/Area Scan (9x18x1): Measurement grid: dx=12mm, dy=12mm

Maximum value of SAR (measured) = 0.182 W/kg

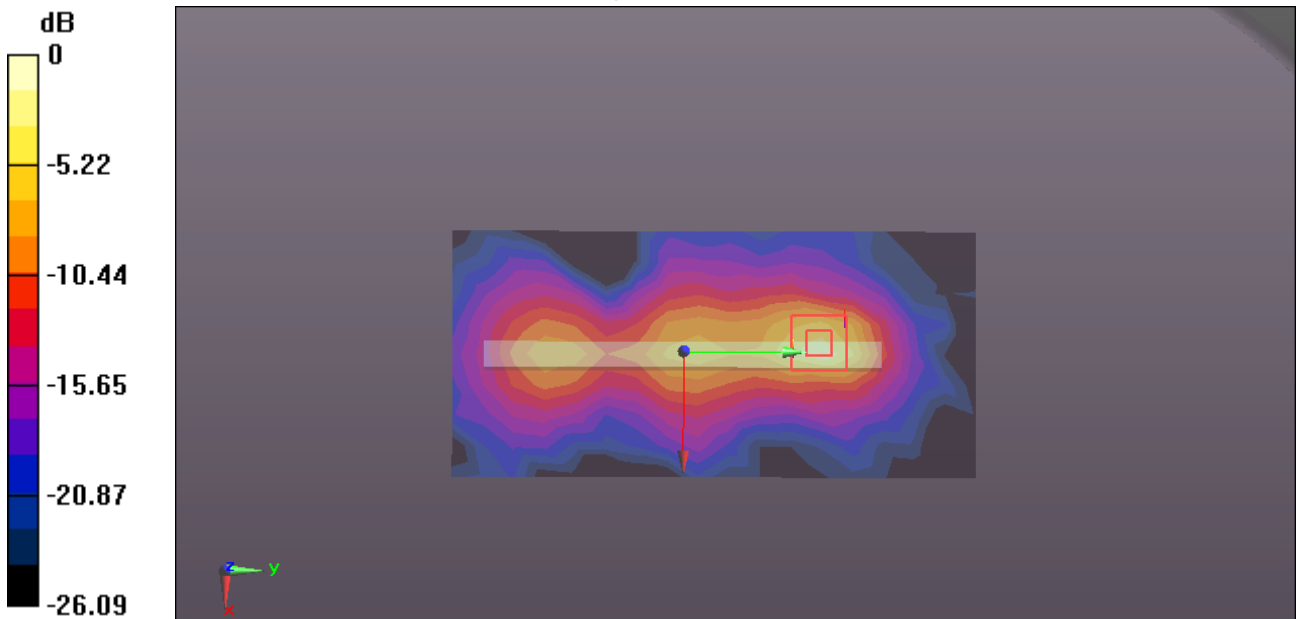
WiFi/Body Edge 4 Low CH1/Zoom Scan (7x7x5)/Cube 0: Measurement grid: dx=5mm, dy=5mm, dz=5mm

Reference Value = 6.199 V/m; Power Drift = 0.01 dB

Peak SAR (extrapolated) = 0.388 W/kg

SAR(1 g) = 0.163 W/kg; SAR(10 g) = 0.062 W/kg

Maximum value of SAR (measured) = 0.276 W/kg



0 dB = 0.276 W/kg = -5.59 dBW/kg