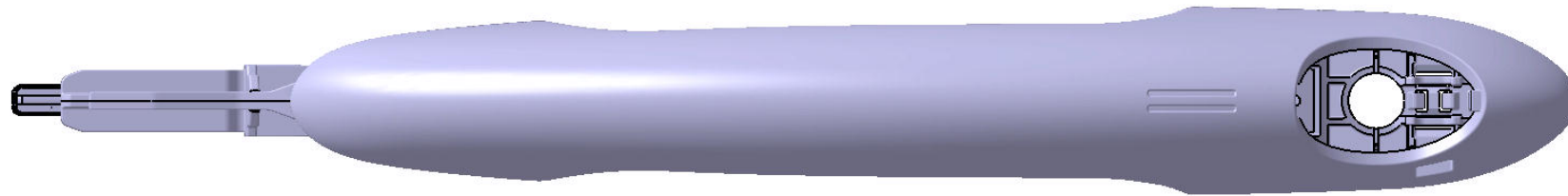




# Serial assy handle for model MINI\_TAGE

F65(U21) 4 Doors F66(U20) 3 Doors





1. Part overview assy handle
2. NFC Marking

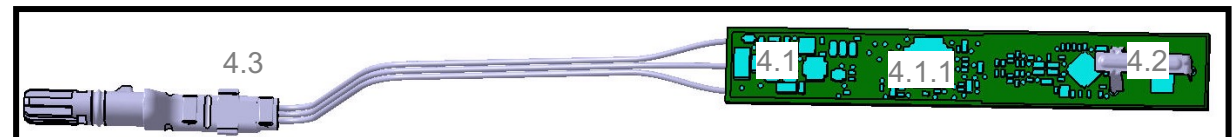
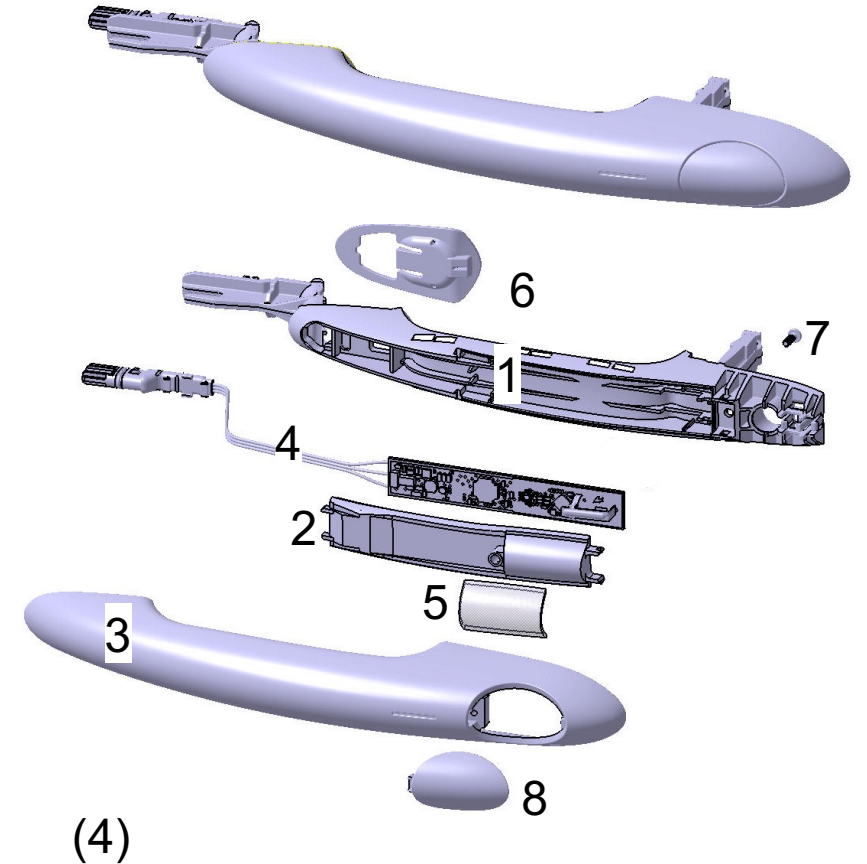
# 1. Part overview assy handle CA NFC



## Parts

### Assy Handle Huf Nr. 14318600/800 / BMW Nr. 5A72203/04

- 1) 14318601 Handle Body
- 2) 14318603 Cover PCBA
- 3) 1418602/802 Cover le./ri.
- 4) 14318610 Electronic
  - 4.1) 14318620 PCBA
    - 4.1.1) 14318621 PCB
    - 4.1.2) 14318630 software
  - 4.2) 14318611 Sensor sheet
  - 4.3) 14318612 Plug with cable
- 5) 14318605 Adhesive tape close sensor
- 6) 14317213 Pad front (carry over part)
- 7) 14317205 Screw (carry over part)
- 8) 14624102 Cover SZ (carry over part)



# 1. Part overview handle

## BOM assy handle CA NFC



	F6x CA NFC painted				Gewicht/Volumen	Dokumente
14.318.601	Handle Body	CA-NFC	DURETH.BKV30GH2.0/90005 1SW	89.000.891	52,00	tech.Dat
14.318.602	Cover	le	Bayblend T45 PG	89.000.987	33,00	tech.Dat
14.318.802	Cover	ri	Bayblend T45 PG	89.000.987	33,00	tech.Dat
14.318.603	Cover	PCB	Durethan BKV 30 H2.0 901510	89.000.035	5,80	tech.Dat
14.318.610	Electronic	milled / gefräst				-
_L14318611	sensor sheet	close sensor	Kaltgewalzter, verzinnter Bandstahl DC01 - E11,2/E11,2	89.002.555	0,34	Tech.Dat
_L14318612	plug	with cable 3 pol.	PA6-GF25 FLRY-B 0,35mm <sup>2</sup>		5,00 plug / 1749mm <sup>3</sup> cable sheath / 360mm <sup>3</sup>	- - -
_L14318620	PCBA				5,00	-
__L14318621	PCB				4,00	-
___L14318630	software				0,00	-
89.002.721	potting		Wevopur PD 445/3 Black	89.002.723	12,70	tech.Dat
14.318.605	adhesive tape	close sensor	>EPDM+PAKC/P<	89.003.954	0,50 / 1143mm <sup>3</sup>	Tech.Dat
89.003.146	Sikaflex 221		>PUR P (DIDP)<	89.003.146	1,00 / 69mm <sup>3</sup>	tech.Dat
14.624.102	cap		Bayblend T45 PG	89.000.987	2,30 /	tech.Dat
14.317.205	screw		Wire rod 302HQ (302Cu, XM- 7)	89.003.956	0,50	Tech.Dat
14.317.213	pad	front	SANTOPRENE 101- 73,SHORE A	89.001.882	1,80 / 1867mm <sup>3</sup>	tech.Dat

# 2. NFC marking

## Label Area 02/2023

There is not enough space on the outside for labeling

