

Full manual available at www.qacoustics.com/manuals

- DE

Volle manuelle verfügbar
www.qacoustics.com/manuals
- EL

Πλήρες εγχειρίδιο διαθέσιμο σε
www.qacoustics.com/manuals
- ES

Manual completo disponible en
www.qacoustics.com/manuals
- FR

Manuel complet disponible à
www.qacoustics.com/manuals
- IT

Manuale completo disponibile presso
www.qacoustics.com/manuals

- NL

Volledige handleiding beschikbaar op
www.qacoustics.com/manuals
- PL

Pełna instrukcja dostępna w
www.qacoustics.com/manuals
- RU

Полное руководство доступно на
www.qacoustics.com/manuals
- SV

Fullständig manual finns på
www.qacoustics.com/manuals
- ZH

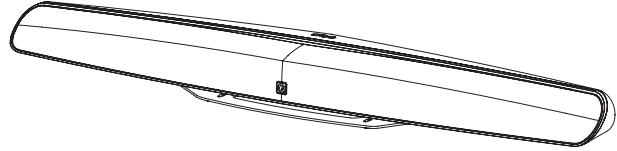
可至官網查閱完整版的使用者說明手冊
www.qacoustics.com/manuals



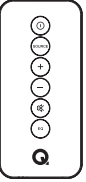
QACOUSTICS

M3 Soundbar

Package contents



1 x Q M3 Soundbar



1 x Remote Control



1 x Lithium Battery
(3V, CR2025)



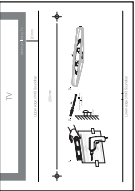
1 x Mains Cable



1 x HDMI Cable



1 x Quick Start
Guide



1 x Wall Mount
Template



1 x Warranty Card

The Bluetooth® word mark and logo are registered trademarks owned by Bluetooth SIG, Inc. and use of such marks by Armour Home Electronics Limited is under license. Other trademarks and trade names are those of their respective owners.

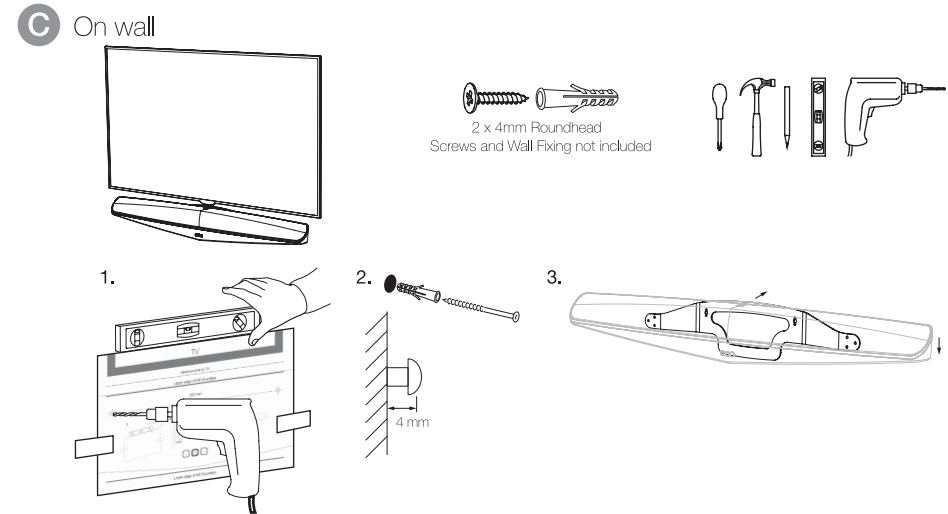
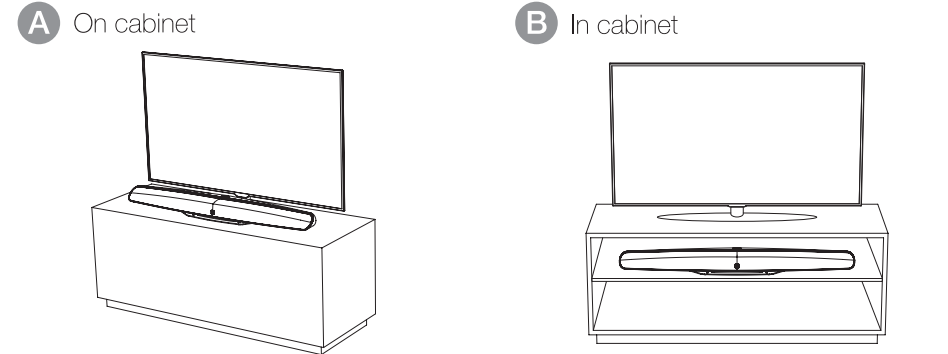
Qualcomm aptX is a product of Qualcomm Technologies International, Ltd. Qualcomm is a trademark of Qualcomm Incorporated, registered in the United States and other countries, used with permission. aptX is a trademark of Qualcomm Technologies International, Ltd., registered in the United States and other countries, used with permission.

The term HDMI and HDMI High-Definition Multimedia Interface, and the HDMI Logo are trademarks or registered trademarks of HDMI Licensing LLC in the United States and other countries.

Our policy is one of continuous product improvement. We reserve the right to change the designs and specifications without notice. This document contains information that is subject to change without notice.

QUICK START GUIDE

1. Choose a location for the M3 Soundbar



DE Wählen Sie einen Speicherort für die M3 Soundbar
A. Auf einem Schrank
B. In einem Schrank
C. An der Wand

EL Επιλέξτε μια θέση για τα M3 Ράβδου Ήχου
A. Πάνω σε ντουλάπι
B. Μέσα σε ντουλάπι
C. Σε τοίχο

ES Scegliere una posizione per i M3 Soundbar
A. Sobre armario
B. En armario
C. En pared

FR Choisissez un emplacement pour les M3 Soundbar
A. Sur l'armoire
B. Dans l'armoire.
C. Sur le mur

IT Scegliere una posizione per i M3 Soundbar
A. Sul mobiletto
B. Nel mobiletto
C. A parete

NL Kies een locatie voor de M3 Soundbar
A. Op audiomeubel
B. In audiomeubel
C. Aan de muur

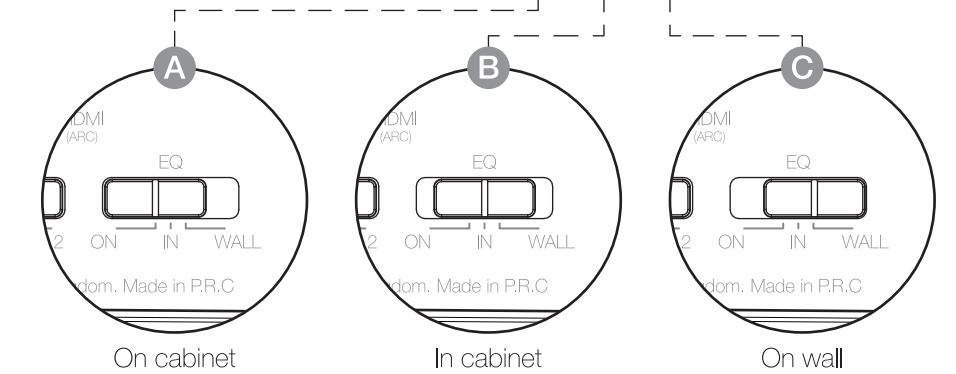
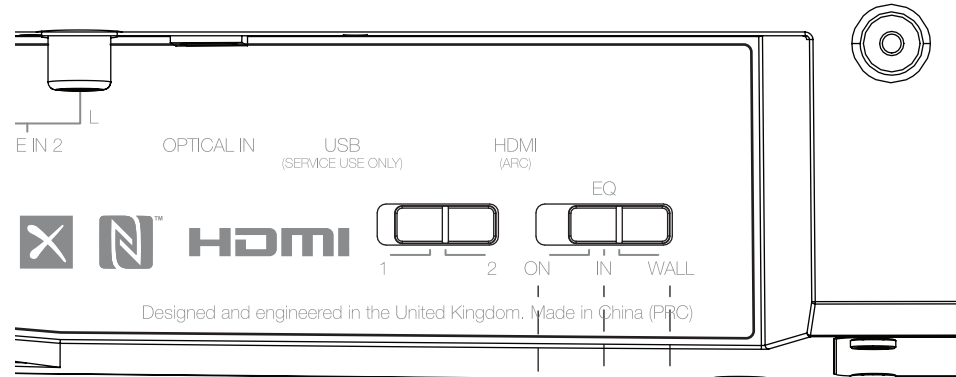
PL Wybierz lokalizację M3 Soundbar
A. Na szafce
B. W szafce
C. Na ścianie

RU Выберите место для M3 Soundbar
A. На шкафу
B. В шкафу
C. На стене

SV Välj en plats för M3 Soundbar
A. På skåp
B. I skåp
C. På vägg

ZH 选择适当的地方放置 M3 Soundbar
A. 柜子上
B. 柜子内
C. 墙上

2. EQ Selection



DE EQ-Auswahl
A. Auf einem Schrank
B. In einem Schrank
C. An der Wand

EL Επιλογή EQ
A. Πάνω σε ντουλάπι
B. Μέσα σε ντουλάπι
C. Σε τοίχο

ES Selección de ecualizador EQ
A. Sobre armario
B. En armario
C. En pared

FR Sélection EQ
A. Sur l'armoire
B. Dans l'armoire.
C. Sur le mur

IT Selezione EQ
A. Sul mobiletto
B. Nel mobiletto
C. A parete

NL EQ-selectie
A. Op audiomeubel
B. In audiomeubel
C. Aan de muur

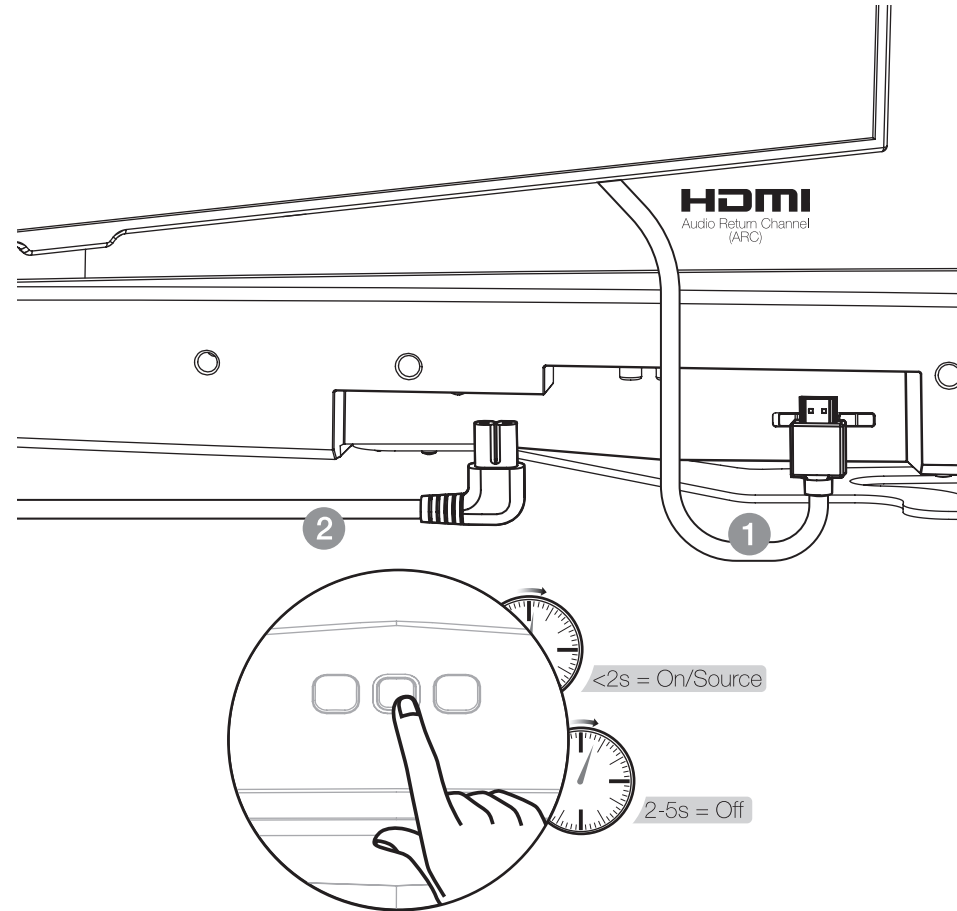
RU Выбор эквалайзера
A. На шкафу
B. В шкафу
C. На стене

PL Wybór EQ
A. Na szafce
B. W szafce
C. Na ścianie

SV EQ-urval
A. På skåp
B. I skåp
C. På vägg

ZH EQ选择
A. 柜子上
B. 柜子内
C. 墙上

3. Connecting to your TV



DE Anschließen an das Fernsehgerät
2s = On / Quellenauswahl
2-5s = Aus

EL Σύνδεση με την τηλεόραση σας
2s = Επιλογής / Πηγή
2-5s = Off

ES Conexión a su televisor
2s = En la selección / Fuente
2-5s = Off

FR Connexion à votre téléviseur
2s = Marche / Source
2-5s = Off

IT Collegamento al televisore
2s = On / Fonte
2-5s = Off

NL Aansluiten op uw TV
2s = On / Bron selectie
2-5s = Uit

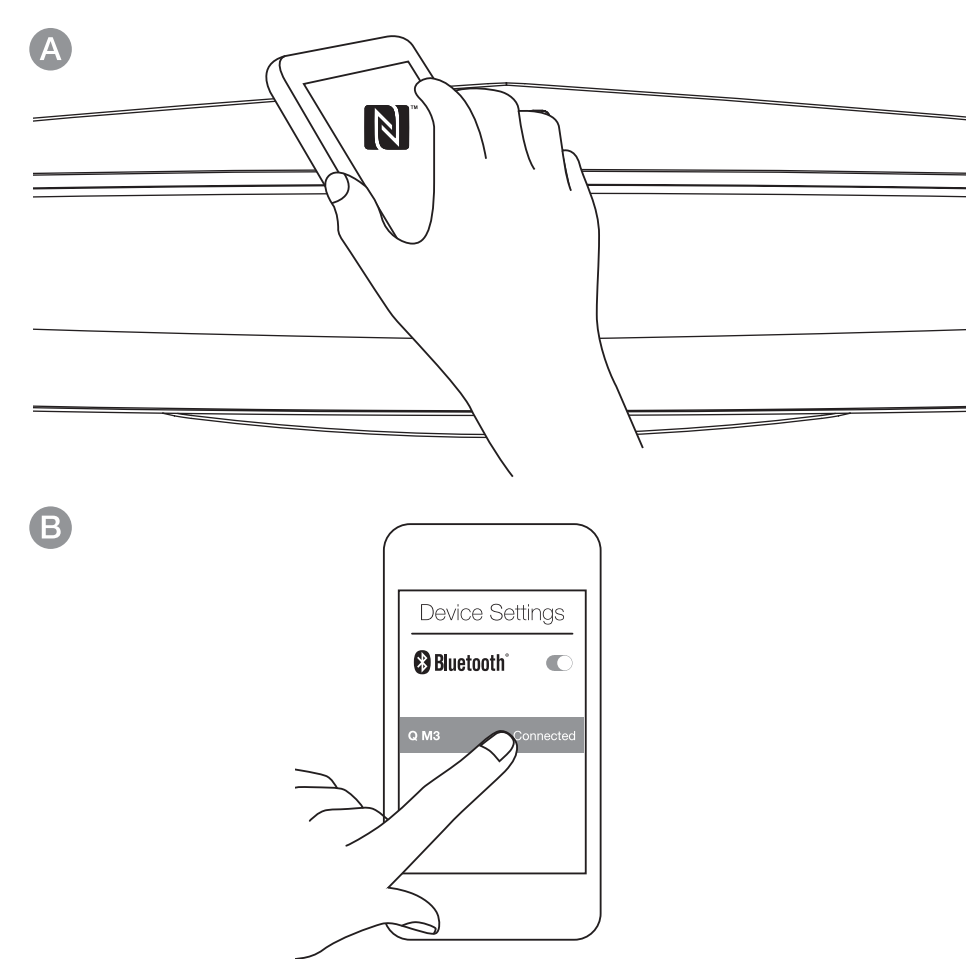
RU Подключение к телевизору
2s = O / выбора источника
2-5s = Выкл

PL Podłączenie do telewizora
2s = W / wyboru źródła
2-5s = Wyłączony

SV Anslutning till TV: n
2s = On / Val av källa
2-5s = Off

ZH 连结您的电视
2s = 开机/选择来源
2-5s = 关机

4. Connecting to your Bluetooth® devices



DE Verbinden mit Ihrem Bluetooth®-Geräte
A - NFC
B - Geräteeinstellungen

EL Σύνδεση σε συσκευές Bluetooth® σας
A - NFC
B - Ρυθμίσεις Συσκευής

ES Conexión a dispositivos Bluetooth®
A - NFC
B - Configuración del dispositivo

FR Raccordement à vos appareils Bluetooth®
A - NFC
B - Paramètres de l'appareil

IT Collegamento ai vostri dispositivi Bluetooth®
A - NFC
B - Impostazioni del dispositivo

NL Verbinding maken met uw Bluetooth®-apparaten
A - NFC
B - Device Settings

PL Podłączenie do urządzeń Bluetooth®
A - NFC
B - Ustawienia urządzenia

RU Подключение к устройствам Bluetooth®
A - NFC
B - Настройки устройства

SV Anslutning till din Bluetooth®-enheter
A - NFC
B - Enhetsinställningar

ZH 連結您的藍芽裝置
A: NFC
B: 裝置設定

Safety information

IMPORTANT INFORMATION - PLEASE READ CAREFULLY

1 Notice

This section contains the legal and trademark notices.

1.1 Notice of Compliance

This device complies with Part 15 of the FCC Rules. Operation is subject to the following two conditions:

- (1) this device may not cause harmful interference, and
- (2) this device must accept any interference received, including interference that may cause undesired operation.

FCC rules

This equipment has been tested and found to comply with the limits for a Class B digital device, pursuant to part 15 of the FCC Rules. These limits are designed to provide reasonable protection against harmful interference in a residential installation. This equipment generates uses and can radiate radio frequency energy and, if not installed and used in accordance with the instruction manual, may cause harmful interference to radio communications. However, there is no guarantee that interference will not occur in a particular installation. If this equipment does cause harmful interference to radio or television reception, which can be determined by turning the equipment off and on, the user is encouraged to try to correct the interference by one or more of the following measures:

- Relocate the receiving antenna.
- Increase the separation between equipment and receiver.
- Connect the equipment into an outlet on a circuit different from that to which the receiver is connected.
- Consult the dealer or an experienced radio/TV technician for help.

FCC Radiation Exposure Statement:

This equipment complies with FCC radiation exposure limits set forth for an uncontrolled environment. This equipment should be installed and operated with a minimum distance of 20cm between the radiator and your body. This transmitter must not be co-located or operated in conjunction with any other antenna or transmitter.

FCC Warning: Any changes or modifications made to this device that are not expressly approved by Q Acoustics may void the user's authority to operate the equipment.

Model number: M3 Soundbar

Trade Name: Q Acoustics

Canada:

CAN ICES-3 (B)/NMB-3(B)

The device meets the exemption from the routine evaluation limits in section 2.5 of RSS 102 and compliance with RSS-102 RF exposure, users can obtain Canadian information on RF exposure and compliance.

This transmitter must not be co-located or operating in conjunction with any other antenna or transmitter.

This equipment should be installed and operated with a minimum distance of 20cm between the radiator and your body.

This device complies with Industry Canada licence-exempt RSS standard(s).

Operation is subject to the following two conditions:

- a) This device may not cause harmful interference, and
- b) This device must accept any interference received, including interference that may cause undesired operation.

2 Important

Read and understand all instructions before you use your Soundbar. If damage is caused by failure to follow instructions, the warranty does not apply.

2.1 Important safety instructions

- Read these instructions.
- Keep these instructions.
- Heed all warnings.
- Follow all instructions.
- Do not use this apparatus near water.
- Clean only with dry cloth.
- Do not block any ventilation openings. Install in accordance with the manufacturer's instructions.
- Do not install near any heat sources such as radiators, heat registers, stoves, or other apparatus (including amplifiers) that produce heat.
- Do not defeat the safety purpose of the polarized or grounding-type plug. A polarized plug has two blades with one wider than the other. A grounding type plug has two blades and a third grounding prong. The wide blade or the third prong is provided for your safety. If the provided plug does not fit into your outlet, consult an electrician for replacement of the obsolete outlet.
- Protect the power cord from being walked on or pinched, particularly at plugs, convenience receptacles, and the point where they exit from the apparatus.
- Only use attachments / accessories specified by the manufacturer.



- Use only with the cart, stand, tripod, bracket or table specified by the

manufacturer, or sold with the apparatus. When a cart is used, use caution when moving the cart / apparatus combination to avoid injury from tip-over.

- Unplug this apparatus during lightning storm or when unused for long periods of time.
- Refer all servicing to qualified service personnel. Servicing is required when the apparatus has been damaged in any way, such as power-supply cord or plug is damaged, liquid has been spilled or objects have fallen into the apparatus, the apparatus has been exposed to rain or moisture, does not operate normally, or has been dropped.
- Battery usage CAUTION – To prevent battery leakage which may result in bodily injury, property damage, or damage to the unit:
 - ❗ Install all batteries correctly, + and - as marked on the unit.
 - ❗ Remove batteries when the unit is not used for a long time.
 - ❗ The batteries (battery pack or batteries installed) shall not be exposed to excessive heat such as sunshine, fire or the like.
 - ❗ Perchlorate Material - special handling may apply. See www.dtsc.ca.gov/hazardouswaste/perchlorate.
 - ❗ WARNING - DO NOT INGEST BATTERY, CHEMICAL BURN HAZARD.
 - ❗ CAUTION: Danger of explosion if battery is incorrectly replaced. Replace only with the same or equivalent type.
 - ❗ This product / remote control contain a coin / button cell battery. If the coin/button cell battery is swallowed, it can cause severe internal burns in just 2 hours and can lead to death. Keep new and used batteries away from children. If the battery compartment does not close securely, stop using the product and keep it away from children. If you think batteries might have been swallowed or placed inside any part of the body, seek immediate medical attention
 - ❗ Apparatus shall not be exposed to dripping or splashing.
 - ❗ Do not place any sources of danger on the apparatus (for example: liquid filled objects, lighted candles).
 - ❗ Where the MAINS plug or an appliance coupler is used as the disconnect device, the disconnect device shall remain readily operable.
 - ❗ Do not place this apparatus on the furniture that is capable of being tilted by a child and an adult leaning, pulling, standing or climbing on it. A falling apparatus can cause serious injury or even death.

- Never use a gas duster for this apparatus. The gas trapped inside of this unit may cause ignition and explosion.

Class II equipment symbol



This symbol indicates that the unit has a double insulation system.



This 'bolt of lightning' indicates uninsulated material within your unit may cause an electrical shock. For the safety of everyone in your household, please do not remove product covering. The 'exclamation point' calls attention to features for which you should read the enclosed literature closely to prevent operating and maintenance problems.

- WARNING: To reduce the risk of fire or electric shock, this apparatus should not be exposed to rain or moisture and objects filled with liquids, such as vases, should not be placed on this apparatus.
- CAUTION: To prevent electric shock, match wide blade of plug to wide slot, fully insert.

2.2 Care of the environment



Your product is designed and manufactured with high quality materials and components, which can be recycled and reused. Never dispose of your product with other household waste. Please inform yourself about the local rules on the separate collection of electrical and electronic products and batteries. The correct disposal of these products helps prevent potentially negative consequences on the environment and human health. The batteries supplied do not contain the heavy metals mercury and cadmium.

Nevertheless, in many areas batteries may not be disposed of with your household waste. Please ensure you dispose of batteries according to local regulations. For perchlorate material, special handling may apply. Visit www.dtsc.ca.gov/hazardouswaste/perchlorate.

Le présent appareil est conforme aux CNR d'Industrie Canada applicables aux appareils radio exempts de licence. L'exploitation est autorisée aux deux conditions suivantes :

- (1) l'appareil ne doit pas produire de brouillage,
- (2) l'utilisateur de l'appareil doit accepter tout brouillage radioélectrique subi, même si le brouillage est susceptible d'en compromettre le fonctionnement.

Le dispositif rencontre l'exemption des limites courantes d'évaluation dans la section 2.5 de RSS 102 et la conformité à l'exposition de RSS-102 rf, utilisateurs peut obtenir l'information canadienne sur l'exposition et la conformité de rf.