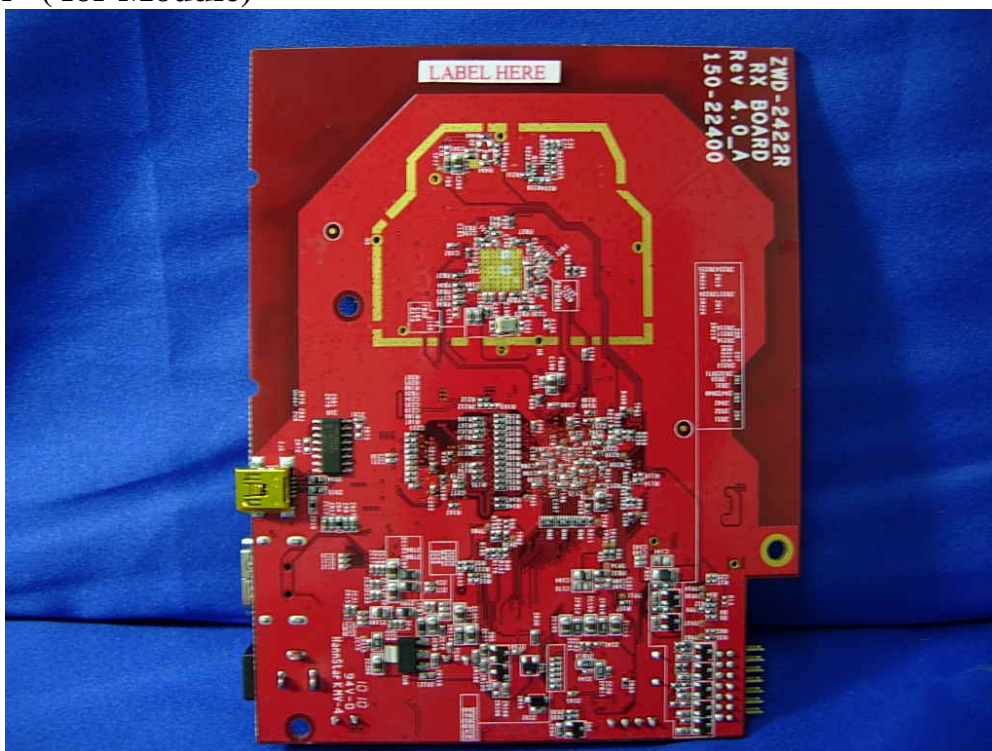


ZINWELL CORPORATION


FCC ID.: YG7ZRF32100

FCC ID Label (for Module)



The FCC ID Label will be placed on the equipment as shown in the photograph below.

ZINWELL
Full HD Video Wireless Receiver Module
Model No.: ZRF-32100
FCC ID: YG7ZRF32100
Manufacture by ZINWELL
Made in Taiwan

FC 

This device complies with Part 15 of the FCC Rules. Operation is subject to the following two conditions: (1) this device may not cause harmful interference, and (2) this device must accept any interference received, including interference that may cause undesired operation. This Class B digital apparatus complies with Canadian ICES-003. Cet appareil numérique de la class B est conforme à la norme NMB-003 du Canada.

ZINWELL CORPORATION

FCC ID.: YG7ZRF32100

FCC ID Label (for System)



The FCC ID Label will be placed on the equipment as shown in the photograph below.



ZINWELL CORPORATION

ZINWELL

Full HD Video Wireless Receiver

Model No.: ZWD-2322R

Input: DC 5V/2A, 10W



Full HD Video Wireless Transmitter Module

Model No.: ZRF-32100

This device complies with Part 15 of the FCC Rules. Operation is subject to the following two conditions: (1) this device may not cause harmful interference, and (2) this device must accept any interference received, including interference that may cause undesired operation. This Class B digital apparatus complies with Canadian ICES-003. Cet appareil numérique de la class B est conforme à la norme NMB-003 du Canada.

Serial No.:

Made In Taiwan



0D1000911028C00001

Contains FCC ID: YG7ZRF32100 IC: 9078A-ZRF32100

Manufacture by ZINWELL

ZINWELL

Full HD Video Wireless Receiver

Model No.: ZWD-2422R

Input: DC 5V/2A, 10W



Full HD Video Wireless Transmitter Module

Model No.: ZRF-32100

This device complies with Part 15 of the FCC Rules. Operation is subject to the following two conditions: (1) this device may not cause harmful interference, and (2) this device must accept any interference received, including interference that may cause undesired operation. This Class B digital apparatus complies with Canadian ICES-003. Cet appareil numérique de la class B est conforme à la norme NMB-003 du Canada.

Serial No.:

Made In Taiwan



0D1000911028C00001

Contains FCC ID: YG7ZRF32100 IC: 9078A-ZRF32100

Manufacture by ZINWELL

ZINWELL CORPORATION

ZINWELL

Full HD Video Wireless Receiver

Model No.: ZWD-2522R

Input: DC 5V/2A, 10W



Full HD Video Wireless Transmitter Module

Model No.: ZRF-32100

This device complies with Part 15 of the FCC Rules. Operation is subject to the following two conditions: (1) this device may not cause harmful interference, and (2) this device must accept any interference received, including interference that may cause undesired operation. This Class B digital apparatus complies with Canadian ICES-003. Cet appareil numérique de la class B est conforme à la norme NMB-003 du Canada.

Serial No.:

Made In Taiwan



0D1000911028C00001

Contains FCC ID: YG7ZRF32100 IC: 9078A-ZRF32100

Manufacture by ZINWELL

ZINWELL

Full HD Video Wireless Receiver

Model No.: ZWD-2622R

Input: DC 5V/2A, 10W



Full HD Video Wireless Transmitter Module

Model No.: ZRF-32100

This device complies with Part 15 of the FCC Rules. Operation is subject to the following two conditions: (1) this device may not cause harmful interference, and (2) this device must accept any interference received, including interference that may cause undesired operation. This Class B digital apparatus complies with Canadian ICES-003. Cet appareil numérique de la class B est conforme à la norme NMB-003 du Canada.

Serial No.:

Made In Taiwan



0D1000911028C00001

Contains FCC ID: YG7ZRF32100 IC: 9078A-ZRF32100

Manufacture by ZINWELL

ZINWELL CORPORATION

ZINWELL

Full HD Video Wireless Receiver

Model No.: ZWD-2722R

Input: DC 5V/2A, 10W



Full HD Video Wireless Transmitter Module

Model No.: ZRF-32100

This device complies with Part 15 of the FCC Rules. Operation is subject to the following two conditions: (1) this device may not cause harmful interference, and (2) this device must accept any interference received, including interference that may cause undesired operation. This Class B digital apparatus complies with Canadian ICES-003. Cet appareil numérique de la class B est conforme à la norme NMB-003 du Canada.

Serial No.:

Made In Taiwan



0D1000911028C00001

Contains FCC ID:YG7ZRF32100 IC: 9078A-ZRF32100

Manufacture by ZINWELL

ZINWELL

Full HD Video Wireless Receiver

Model No.: ZWD-2822R

Input: DC 5V/2A, 10W



Full HD Video Wireless Transmitter Module

Model No.: ZRF-32100

This device complies with Part 15 of the FCC Rules. Operation is subject to the following two conditions: (1) this device may not cause harmful interference, and (2) this device must accept any interference received, including interference that may cause undesired operation. This Class B digital apparatus complies with Canadian ICES-003. Cet appareil numérique de la class B est conforme à la norme NMB-003 du Canada.

Serial No.:

Made In Taiwan



0D1000911028C00001

Contains FCC ID:YG7ZRF32100 IC: 9078A-ZRF32100

Manufacture by ZINWELL

ZINWELL CORPORATION

ZINWELL

Full HD Video Wireless Receiver

Model No.: ZWD-1222R

Input: DC 5V/2A, 10W



Full HD Video Wireless Transmitter Module

Model No.: ZRF-32100

This device complies with Part 15 of the FCC Rules. Operation is subject to the following two conditions: (1) this device may not cause harmful interference, and (2) this device must accept any interference received, including interference that may cause undesired operation. This Class B digital apparatus complies with Canadian ICES-003. Cet appareil numérique de la class B est conforme à la norme NMB-003 du Canada.

Serial No.:

Made in Taiwan



0D1000911028C00001

Contains FCC ID: YG7ZRF32100 IC: 9078A-ZRF32100

Manufacture by ZINWELL

brite-View

Full HD Video Wireless Receiver

Model No.: BV-2222R

Input: DC 5V/2A, 10W



ZINWELL

Full HD Video Wireless Transmitter Module

Model No.: ZRF-32100

This device complies with Part 15 of the FCC Rules. Operation is subject to the following two conditions: (1) this device may not cause harmful interference, and (2) this device must accept any interference received, including interference that may cause undesired operation. This Class B digital apparatus complies with Canadian ICES-003. Cet appareil numérique de la class B est conforme à la norme NMB-003 du Canada.

Serial No.:

Made in Taiwan



0D1000911028C00001

Contains FCC ID: YG7ZRF32100 IC: 9078A-ZRF32100

Manufacture by ZINWELL

ZINWELL CORPORATION

brite-View

Full HD Video Wireless Receiver

Model No.: BV-2322R

Input: DC 5V/2A, 10W

ZINWELL

Full HD Video Wireless Transmitter Module

Model No.: ZRF-32100

This device complies with Part 15 of the FCC Rules. Operation is subject to the following two conditions: (1) this device may not cause harmful interference, and (2) this device must accept any interference received, including interference that may cause undesired operation. This Class B digital apparatus complies with Canadian ICES-003. Cet appareil numérique de la class B est conforme à la norme NMB-003 du Canada.

Serial No.:

Made in Taiwan



0D1000911028C00001

Contains FCC ID: YG7ZRF32100 IC: 9078A-ZRF32100

Manufacture by ZINWELL



brite-View

Full HD Video Wireless Receiver

Model No.: BV-2422R

Input: DC 5V/2A, 10W

ZINWELL

Full HD Video Wireless Transmitter Module

Model No.: ZRF-32100

This device complies with Part 15 of the FCC Rules. Operation is subject to the following two conditions: (1) this device may not cause harmful interference, and (2) this device must accept any interference received, including interference that may cause undesired operation. This Class B digital apparatus complies with Canadian ICES-003. Cet appareil numérique de la class B est conforme à la norme NMB-003 du Canada.

Serial No.:

Made in Taiwan



0D1000911028C00001

Contains FCC ID: YG7ZRF32100 IC: 9078A-ZRF32100

Manufacture by ZINWELL



ZINWELL CORPORATION

brite-View

Full HD Video Wireless Receiver

Model No.: BV-2522R

Input: DC 5V/2A, 10W

ZINWELL

Full HD Video Wireless Transmitter Module

Model No.: ZRF-32100

This device complies with Part 15 of the FCC Rules. Operation is subject to the following two conditions: (1) this device may not cause harmful interference, and (2) this device must accept any interference received, including interference that may cause undesired operation. This Class B digital apparatus complies with Canadian ICES-003. Cet appareil numérique de la class B est conforme à la norme NMB-003 du Canada.

Serial No.:

Made In Taiwan



0D1000911028C00001

Contains FCC ID:YG7ZRF32100 IC: 9078A-ZRF32100

Manufacture by ZINWELL



brite-View

Full HD Video Wireless Receiver

Model No.: BV-2622R

Input: DC 5V/2A, 10W

ZINWELL

Full HD Video Wireless Transmitter Module

Model No.: ZRF-32100

This device complies with Part 15 of the FCC Rules. Operation is subject to the following two conditions: (1) this device may not cause harmful interference, and (2) this device must accept any interference received, including interference that may cause undesired operation. This Class B digital apparatus complies with Canadian ICES-003. Cet appareil numérique de la class B est conforme à la norme NMB-003 du Canada.

Serial No.:

Made In Taiwan



0D1000911028C00001

Contains FCC ID:YG7ZRF32100 IC: 9078A-ZRF32100

Manufacture by ZINWELL



ZINWELL CORPORATION

brite-View

Full HD Video Wireless Receiver

Model No.: BV-2722R

Input: DC 5V/2A, 10W

ZINWELL

Full HD Video Wireless Transmitter Module

Model No.: ZRF-32100

This device complies with Part 15 of the FCC Rules. Operation is subject to the following two conditions: (1) this device may not cause harmful interference, and (2) this device must accept any interference received, including interference that may cause undesired operation. This Class B digital apparatus complies with Canadian ICES-003. Cet appareil numérique de la class B est conforme à la norme NMB-003 du Canada.

Serial No.:

Made In Taiwan



0D1000911028C00001

Contains FCC ID: YG7ZRF32100 IC: 9078A-ZRF32100

Manufacture by ZINWELL



brite-View

Full HD Video Wireless Receiver

Model No.: BV-2822R

Input: DC 5V/2A, 10W

ZINWELL

Full HD Video Wireless Transmitter Module

Model No.: ZRF-32100

This device complies with Part 15 of the FCC Rules. Operation is subject to the following two conditions: (1) this device may not cause harmful interference, and (2) this device must accept any interference received, including interference that may cause undesired operation. This Class B digital apparatus complies with Canadian ICES-003. Cet appareil numérique de la class B est conforme à la norme NMB-003 du Canada.

Serial No.:

Made In Taiwan



0D1000911028C00001

Contains FCC ID: YG7ZRF32100 IC: 9078A-ZRF32100

Manufacture by ZINWELL



ZINWELL CORPORATION

brite-View

Full HD Video Wireless Receiver

Model No.: BV-1222R

Input: DC 5V/2A, 10W

ZINWELL

Full HD Video Wireless Transmitter Module

Model No.: ZRF-32100

This device complies with Part 15 of the FCC Rules. Operation is subject to the following two conditions: (1) this device may not cause harmful interference, and (2) this device must accept any interference received, including interference that may cause undesired operation. This Class B digital apparatus complies with Canadian ICES-003. Cet appareil numérique de la class B est conforme à la norme NMB-003 du Canada.

Serial No.:

Made in Taiwan



0D1000911028C00001

Contains FCC ID: YG7ZRF32100 IC: 9078A-ZRF32100

Manufacture by ZINWELL

