

**Annex B Test setup photos**



Test setup semi anechoic chamber (position 1)

**Annex B**    **Test setup photos**



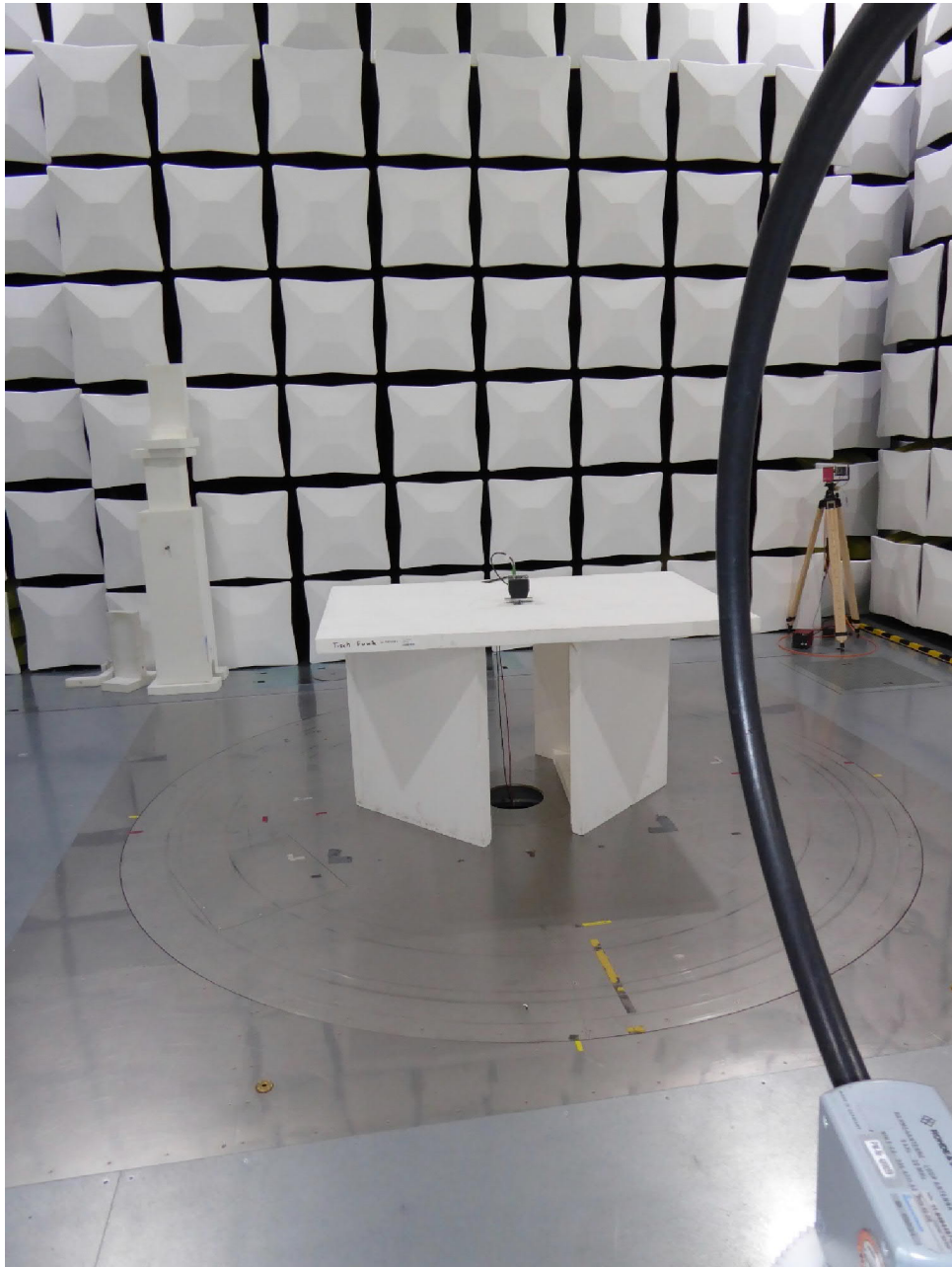
Test setup semi anechoic chamber (position 2)

**Annex B Test setup photos**



Test setup semi anechoic chamber (position 3)

**Annex B**    **Test setup photos**



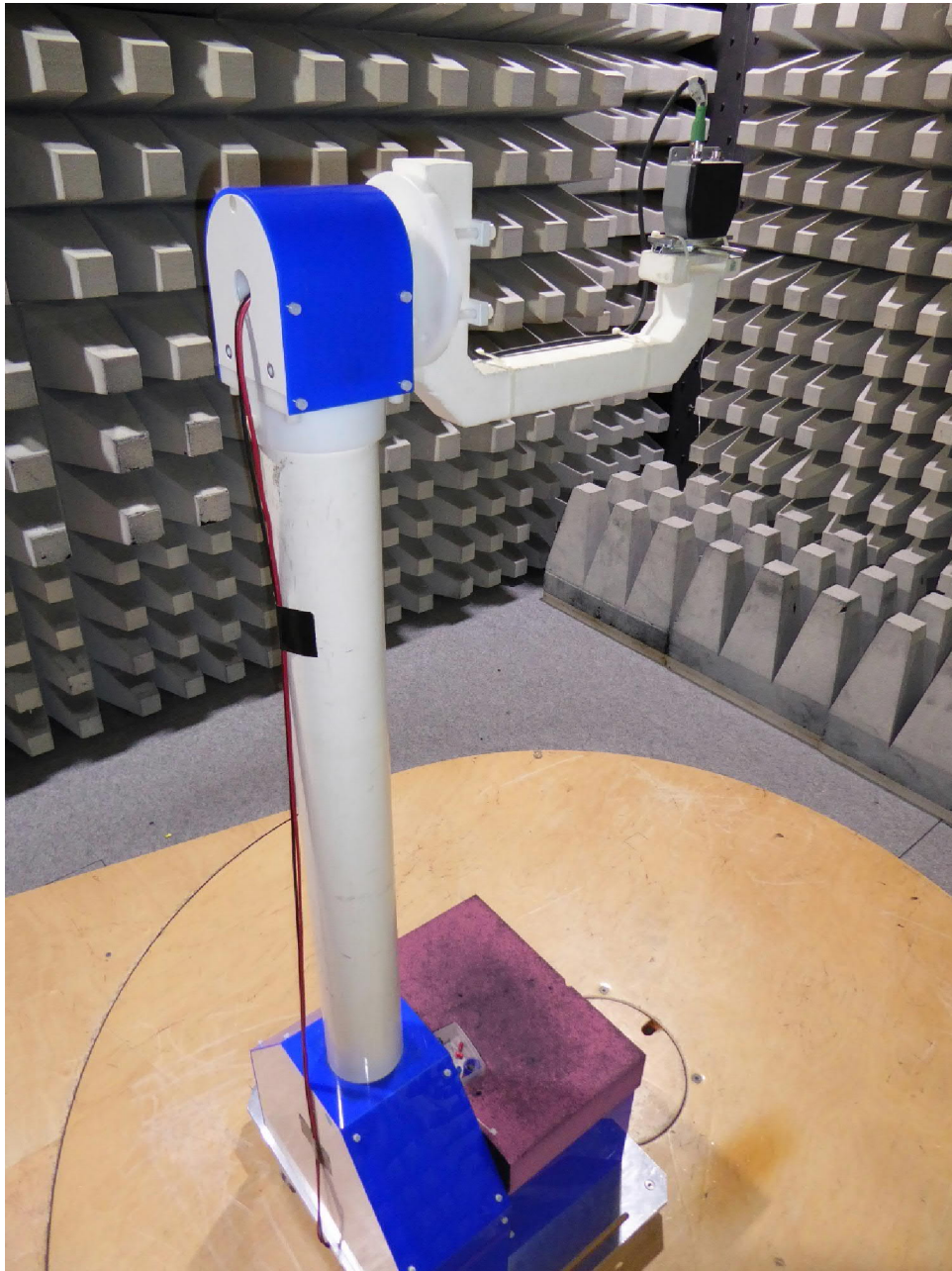
Test setup semi anechoic chamber <30 MHz

**Annex B Test setup photos**



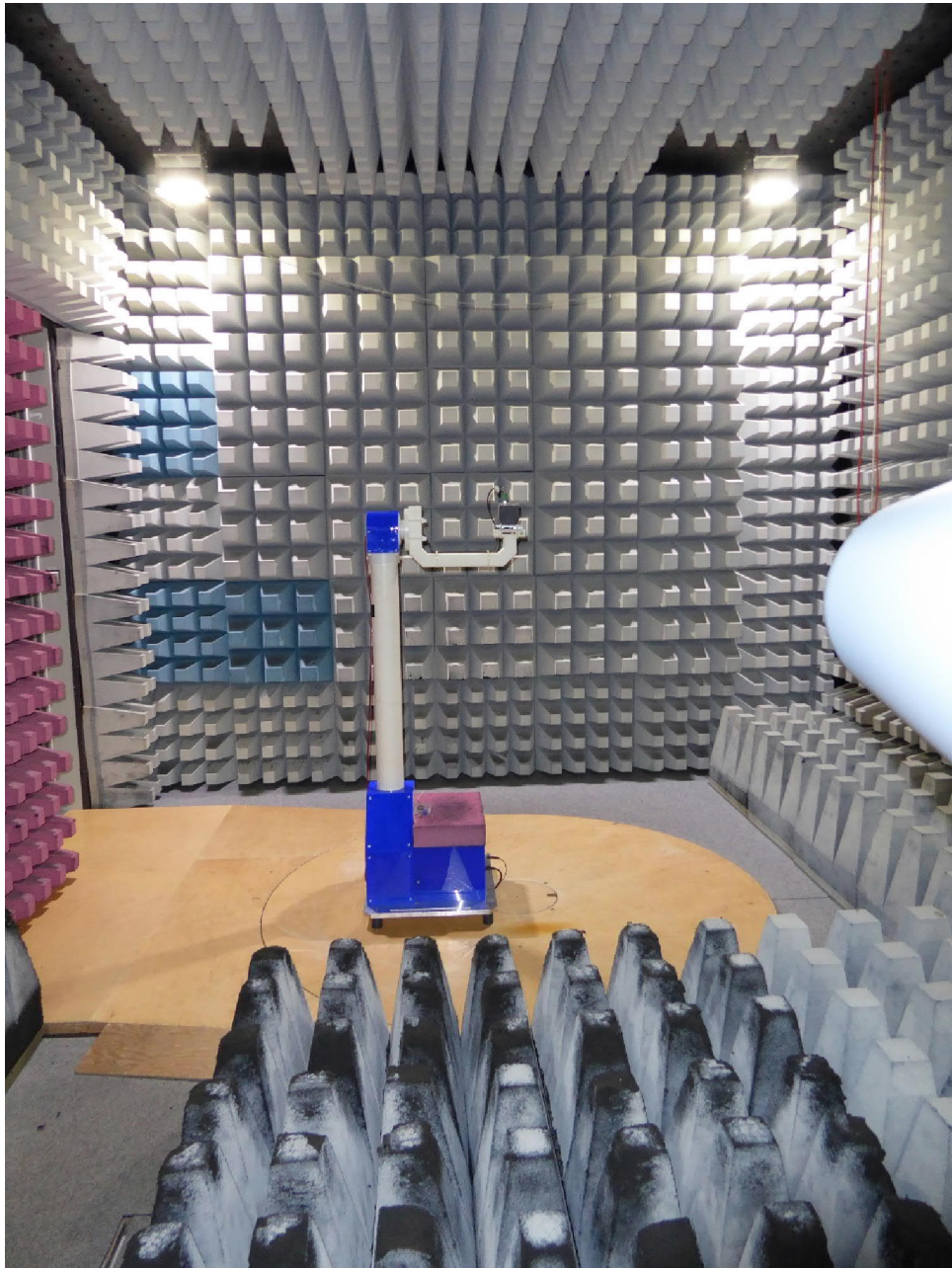
Test setup semi anechoic chamber <1 GHz

**Annex B**    **Test setup photos**



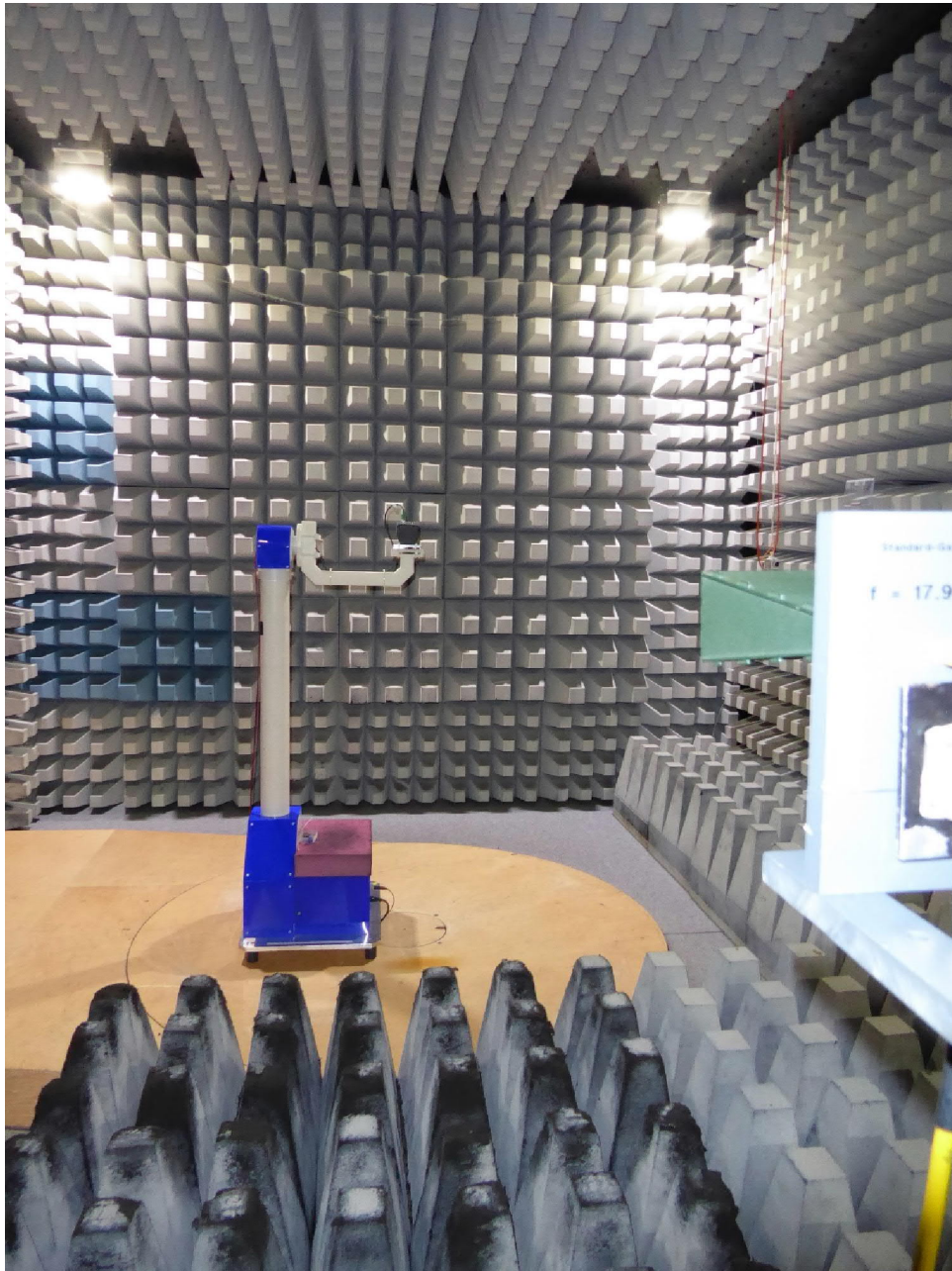
Test setup fully anechoic chamber >1 GHz

**Annex B**    **Test setup photos**



Test setup fully anechoic chamber <12 GHz

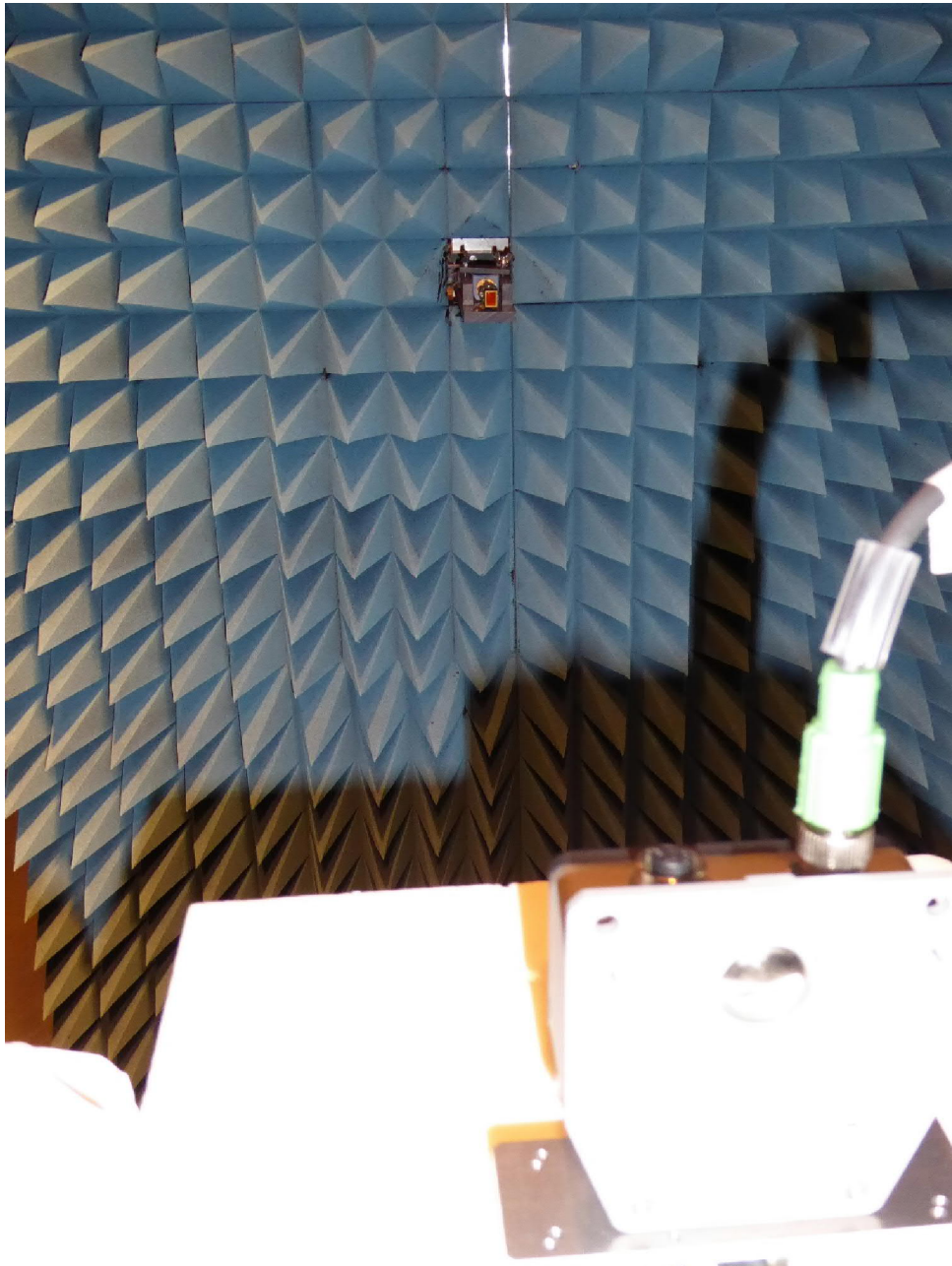
**Annex B**    **Test setup photos**



Test setup fully anechoic chamber <40 GHz

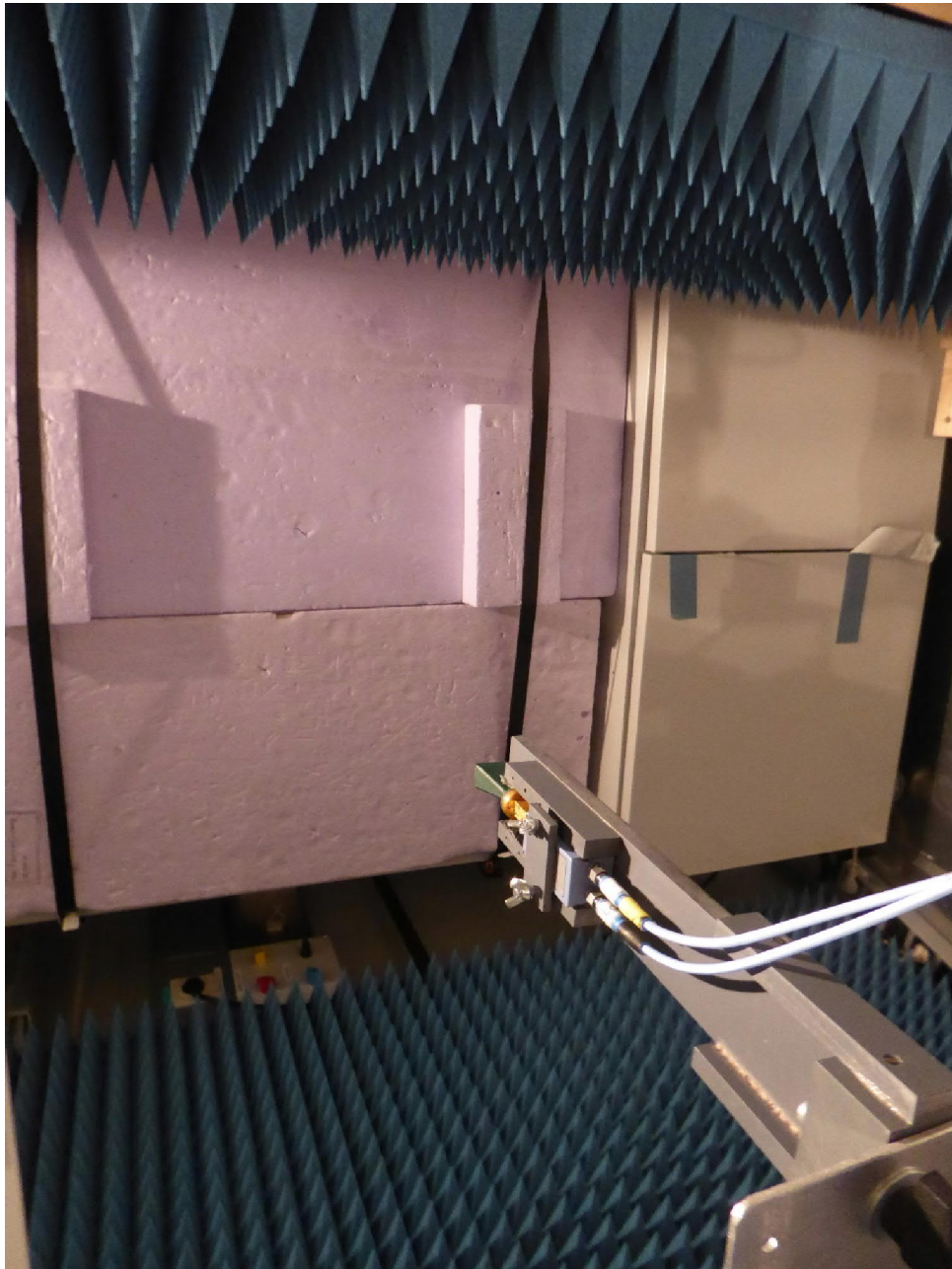


**Annex B Test setup photos**



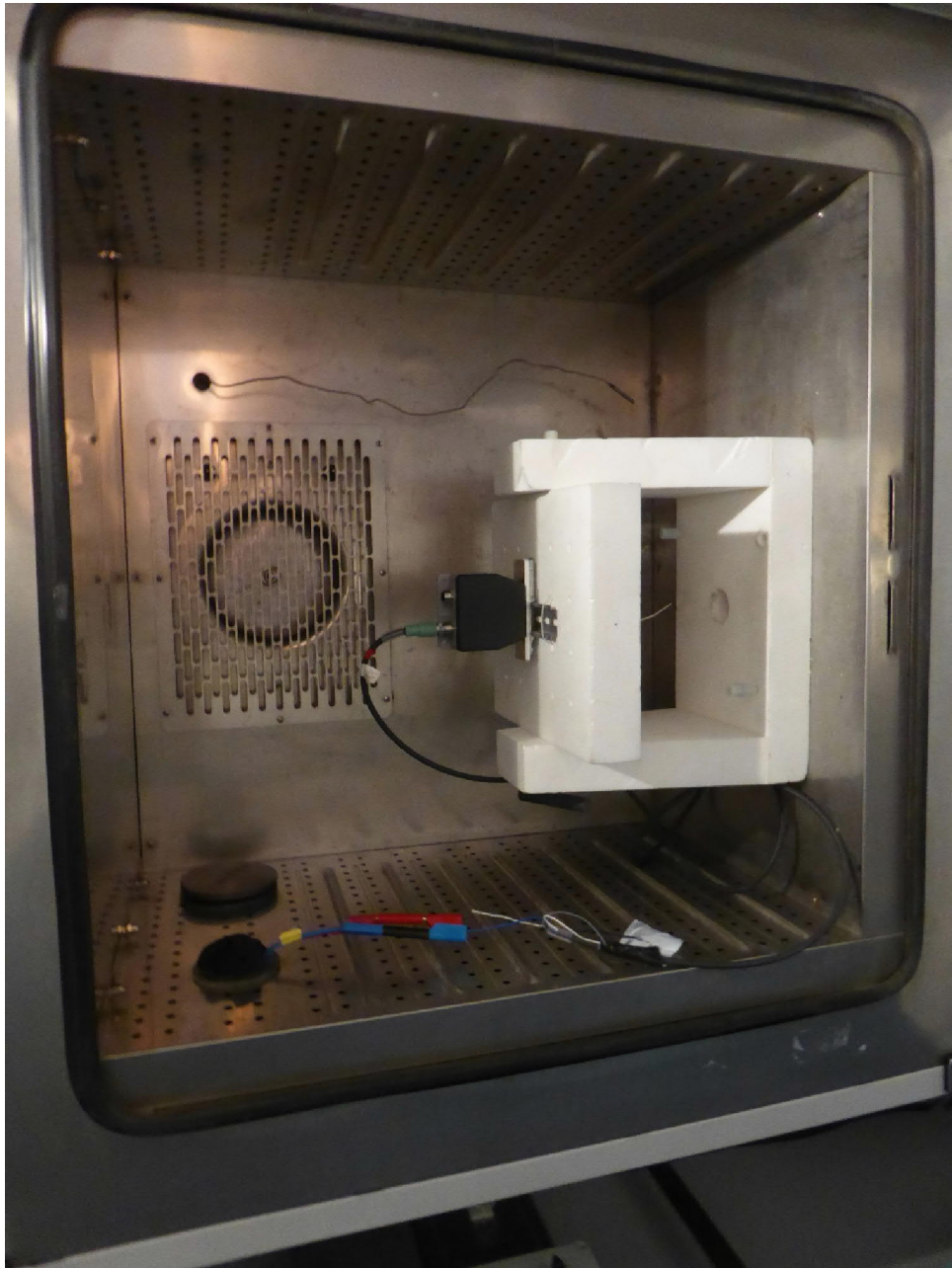
Test setup >40 GHz

**Annex B**    **Test setup photos**



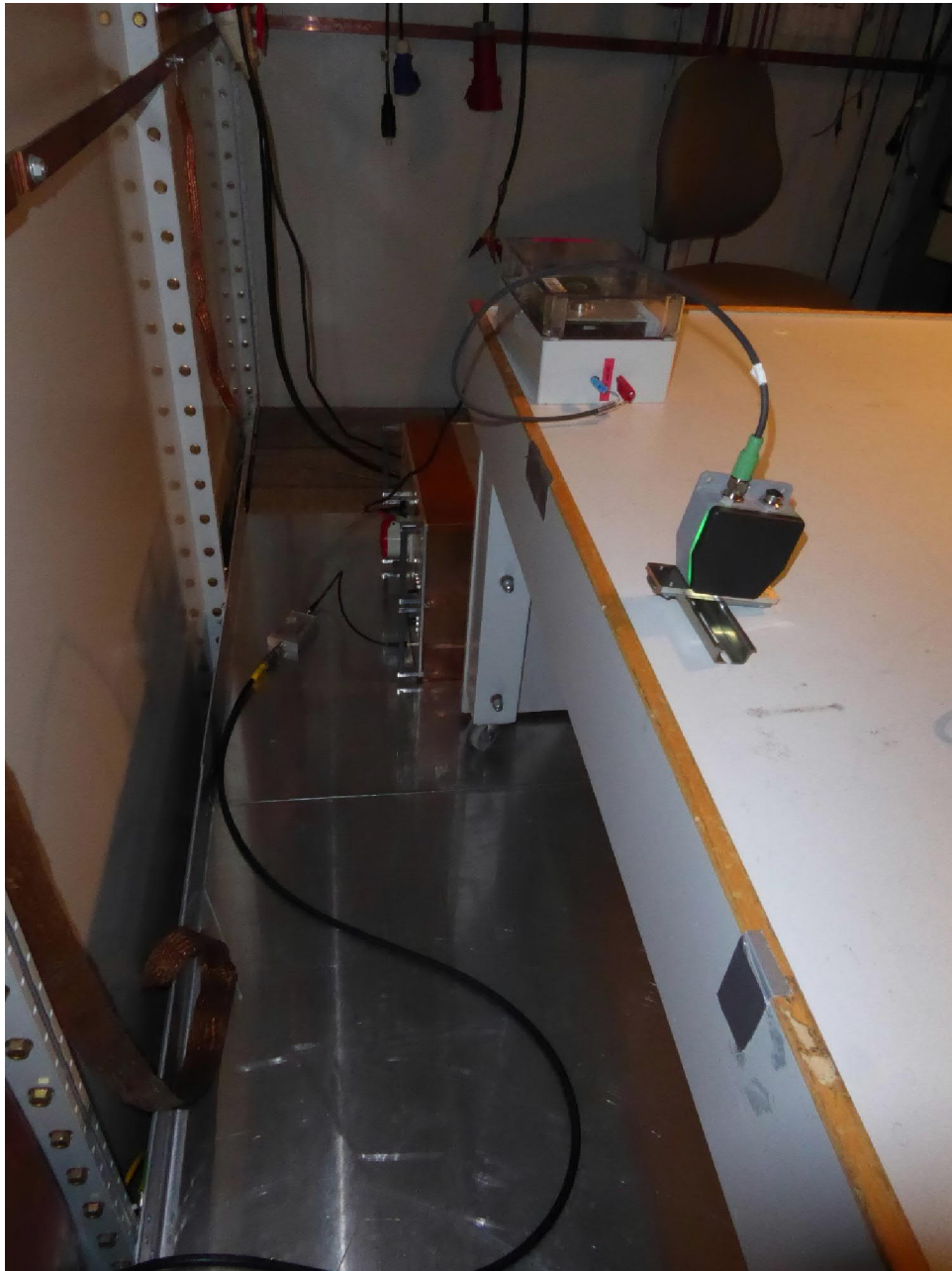
Test temperature chamber (with isolation)

**Annex B**    **Test setup photos**



Test temperature chamber (isolation removed)

**Annex B**    **Test setup photos**



Test AC power line conducted emissions