

1.6 User Manual



Carrera **RC**

**Carrera RC Race Boat,
red - blue - black**

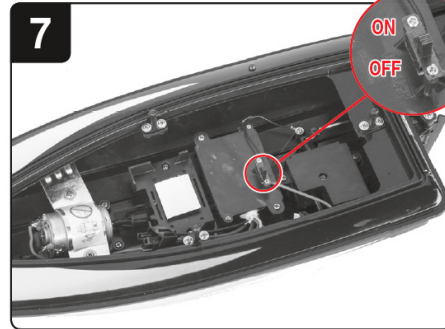
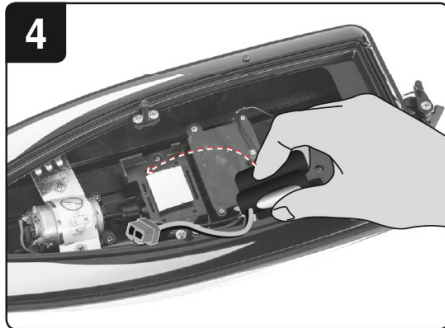
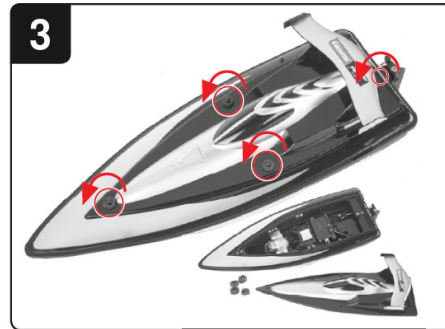
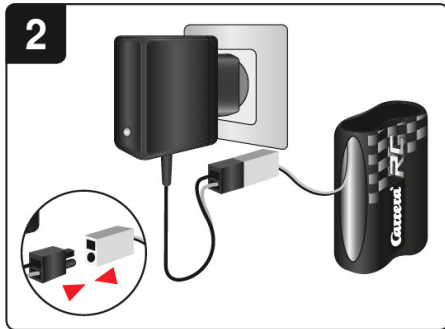
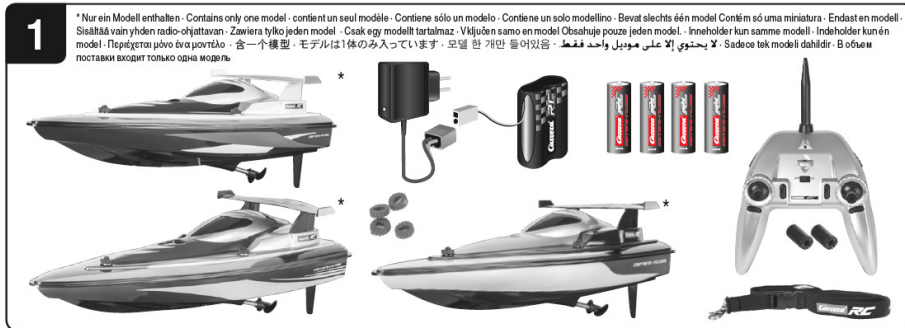
#301010
#301011
#301012

- D** *Montage- und Betriebsanleitung*
- GB USA** *Assembly and operating instructions*
- F** *Instructions de montage et d'utilisation*
- E** *Instrucciones de montaje y de servicio*
- I** *Istruzioni per il montaggio e l'uso*
- NL** *Montage- en gebruiksaanwijzing*
- P** *Instruções de montagem e modo de utilização*
- S** *Monterings- och bruksanvisning*
- FIN** *Asennus- ja käyttöohje*
- PL** *Instrukcja montażu i obsługi*
- H** *Szerelési és használati utasítás*
- SLD** *Navodila za montažo in uporabo*
- CZ** *Návod k montáži a obsluze*
- N** *Montajse- og bruksanvisning*
- DK** *Monterings- og driftsvejledning*
- GR** *Οδηγίες συναρμολόγησης και λειτουργίας*
- RC** *安装和使用说明*
- J** *取扱説明書取扱説明書の内容は予*
- ROK** *조립과 작동 방법*
- Arabic** *إرشادات التركيب و الاستخدام*
- TR** *Montaj ve işletme kılavuzu*
- RUS** *Инструкция по монтажу и эксплуатации*

RC **Power**

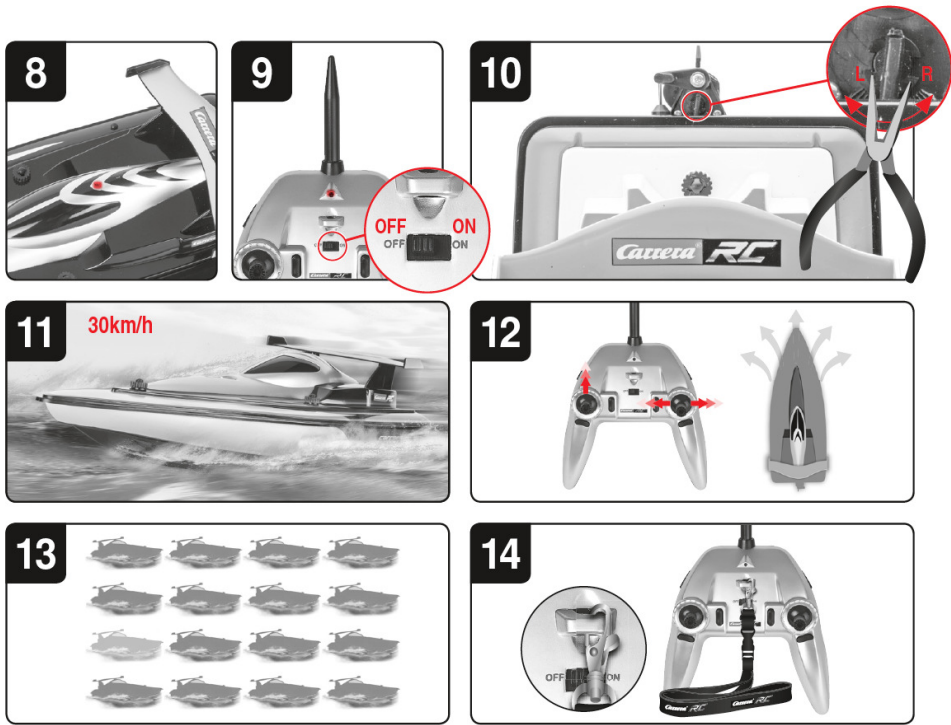
carrera-rc.com

Made in China, Shantou.

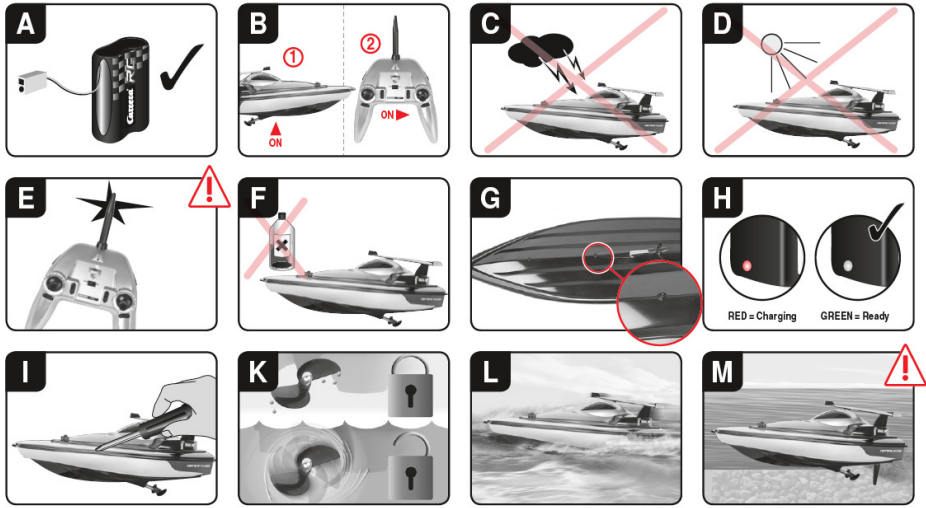


2

09/2013 - 1



Sicherheitsbestimmungen · Safety instructions · Consignes de sécurité
Disposiciones de seguridad · Norme di sicurezza · Veiligheidsbepalingen
Prescrições de segurança · Säkerhetsbestämmelser · Turvallisuusohjeet
Zasady bezpieczeństwa · Biztonsági rendelkezések · Varnostna določila
Bezpečnostní předpisy · Sikkerhetsbestemmelser · Sikkerhedsbestemmelser
Διατάξεις ασφαλείας · 安全准则 · 安全規定 · 안전수칙 · أنظمة السلامة
Emniyet kaideleri · Правила техники безопасности





ENGLISH

Dear customer

Congratulations on purchasing a Carrera RC model boat, manufactured in accordance with the latest technology. As it is our constant endeavour to develop and improve our products, we reserve the right to make modifications, either of a technical nature or with respect to features, materials, and design, at any time, and without prior notice. For this reason, no claims will be accepted for any slight deviations in your product from the data and illustrations contained in these instructions. These operating and assembly instructions are an integral part of the product. Non-observance of these operating instructions and the safety instructions they contain will render the guarantee null and void. These instructions are to be kept for future reference and in the event that the product is passed on to a third party.

Guarantee conditions

Carrera products are technically advanced products (NO TOYS) which should be handled with care. It is important to follow the directions given in the operating instructions. All components have been subjected to careful inspection (technical modifications and alterations to the model for the purpose of product improvement are reserved).

Should any faults nevertheless occur, guarantee is assumed within the scope of the following conditions:

The guarantee covers demonstrable material or manufacturing defects that existed at the time that the Carrera product was purchased. The guarantee period is 24 months beginning with the date of purchase. The guarantee does not extend to wearing parts (such as Carrera RC rechargeable batteries, antennae, tyres, gearbox components etc.), damage caused by improper treatment or use, or unauthorised intervention. Repair may only be performed by Stadlbauer Marketing + Vertrieb GmbH itself or by a company it has authorised to do so. Within the scope of this guarantee, either the product as a whole or only the defective components will be replaced or equivalent substitution performed, as deemed appropriate by Stadlbauer Marketing + Vertrieb GmbH. The guarantee does not cover transport, packaging or travel costs or any damage for which the buyer is responsible. These costs are to be covered by the buyer. Guarantee claims will only be accepted from the original purchaser of the Carrera product.

Guarantee claims can only be accepted when:

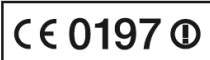
- The card has been filled in properly and sent in together with the defective Carrera product and the purchase receipt/invoice/cash-register receipt.
- No unauthorised alterations have been made by the buyer to the guarantee card.
- The toy has been treated in accordance with the operating instructions and subjected to its intended use.
- The damage/faulty operation is not due to acts of God or normal wear and tear.

Guarantee cards cannot be replaced.

Note for EU countries: Reference is hereby made to the seller's statutory guarantee obligation, to the extent that this guarantee obligation is not restricted by the product guarantee.

Declaration of conformity

Stadlbauer Marketing + Vertrieb GmbH hereby declares that this model including the controller conforms with the fundamental requirements of the following EC directives: EC Directives 2009/48 and 2004/108/EC regarding electromagnetic compatibility and the other relevant regulations of Directive 1999/5/EC (R&TTE). The original declaration of conformity can be requested from carrera-rc.com.



Warning!

This remote-controlled model is NOT A PLAYTHING and is only suitable for young people over 14 years of age. This model is not intended for use by children, unless they are supervised by a responsible adult. Inappropriate use may result in severe injuries and/or damage to property. It has to be operated with care and caution and requires both mechanical and mental skills. The operating instructions contain notes on safety and technical regulations as well as information on maintaining and operating the product. It is indispensable to read these instructions thoroughly before the first usage. Only this helps to avoid accidents with injuries and damage.



This symbol, showing refuse bins with a cross through them, denotes that empty batteries, rechargeable batteries, button cells, rechargeable battery packs, equipment batteries, disused electrical equipment, etc. should not be disposed of in domestic refuse, as they are harmful to the environment and health. Please help to preserve environment and health and talk to your children about the correct disposal of used batteries and disused electrical equipment. Batteries and disused electrical equipment should be handed in to the usual collection points where they can be properly recycled. Do not mix dissimilar battery types or employ new and used batteries together. Empty batteries should be removed from the product. Do not attempt to recharge non-rechargeable batteries. Rechargeable batteries are only to be charged by adults. Exhausted batteries are to be removed from the toy. Rechargeable batteries should be removed from the product before charging. Supply terminal are not to be short-circuited. Only use the batteries recommended or equivalent types. If in regular use the charger must be examined for damage to the cord, plug, covers and all other parts. If any signs of damage are found the charger may only be used again after repair work has been completed.

Requirement for FCC Part 15

Warning: Changes or modifications not expressly approved by the party responsible for compliance could void the user's authority to operate the equipment.

Note: This equipment has been tested and found to comply with the limits for a Class B digital device, pursuant to Part 15 of the FCC Rules. These limits are designed to provide reasonable protection against harmful interference in a residential installation. This equipment generates, uses and can radiate radio frequency energy and, if not installed and used in accordance with the instructions, may cause harmful interference to radio communications.

However, there is no guarantee that interference will not occur in a particular installation. If this equipment does cause harmful interference to radio or television reception, which can be determined by turning the equipment off and on, the user is encouraged to try to correct the interference by one or more of the following measures:

- Reorient or relocate the receiving antenna.
- Increase the separation between the equipment and receiver.
- Connect the equipment into an outlet on a circuit different from that to which the receiver is connected.
- Consult the dealer or an experienced radio/TV technician for help.

Safety instructions

- A** A Carrera RC boat is a remote controlled model boat that uses special rechargeable batteries for this purpose. Only original Carrera RC Li-Ion rechargeable batteries may be used. Rechargeable batteries are to be removed from the boat before being charged.
- B** When starting, always switch on the boat first, then the controller. To switch off after the run, always follow the reverse order!
- C** Do not run your boat during a thunderstorm! Atmospheric interference can lead to malfunctions.
- D** Do not expose the Carrera RC boat to direct sunlight. To avoid the electronics in the boat overheating, when temperatures are above 35 °C, regular short pauses in operation are essential.
- E** Handle the tip of the antenna with care. Danger of injury!
- F** Never use strong solvents for cleaning your model.
- G** Please clean the water sensor contacts regularly with tap water and a little vinegar-based cleaner.
- H** To avoid malfunctions to the control system resulting in uncontrolled operation of the Carrera RC boat, check that the controller batteries and the rechargeable batteries in the boat have sufficient charge. Supply terminals are not to be short-circuited.
- I** The Carrera RC boat must be inspected before and after operation, each time it is used, to ensure that it has not become disassembled. Any screws or nuts that may have become loosened during operation must be tightened.
- K** **Safety propeller**
The propeller switches off on being taken out of the water. Please note particularly that the propellers have no function out of the water.
- L** The boat is to be operated in water only when fully assembled. Please ensure your remote control batteries have the required capacity and make sure the Li-Ion power pack is fully charged.
- M** **Be sure not to allow the propeller or the rudder to touch the bed of the water.**
If this is allowed to happen it may lead to permanent damage and severely affect the manoeuvrability and speed of the boat. If necessary, change the propeller for the replacement propeller.





Contents of package

- 1** 1x Carrera RC Boat
1x Controller
1x Lanyard
1x Battery Charger
1x Rechargeable Battery
2x Joystick extensions
1x Set of replacement parts
4x 1.5 V Mignon AA batteries
(non-rechargeable)

Charging the rechargeable battery

- 2** First connect the Carrera RC rechargeable battery to the battery charger supplied. The connection terminals between the battery and the charger are designed to prevent connection with the wrong polarity. Connect the charger to a power source.

When the battery is properly connected and charging normally, the red LED is constantly lit. Once the battery is fully charged, the red LED switches to green. The battery can now be disconnected and installed in the Carrera RC boat. The boat is now ready for use.

After use, the battery must be allowed to cool down for at least 20 minutes before it can be fully recharged. Failure to observe this pause may damage the battery.

Always recharge the battery immediately after use to prevent its becoming deep discharged. Recharge the battery occasionally (suggested every 2-3 months). Failure to treat the battery as described above can lead to its becoming defective. Rechargeable batteries are only to be charged by adults.

Installing the rechargeable battery

- 3** Open the cover on top of the boat by turning the four fastenings.
- 4** Connect the end of the cable from the Carrera RC boat with the charged battery. Put the battery in place.
- 5** Close the cover on top of the boat by turning the four fastenings back. **Be sure to check that the cover is seated correctly.**

Inserting the batteries

- 6** Open the battery compartment with a screwdriver and insert the batteries in the remote control. Please keep in mind the correct polarity. After having closed the compartment you can check all functions of the remote control with the help of the power-switch on the front. With the power-switch turned ON and proper functioning, the top center LED on the remote control will light up red.

When the control LED flashes rapidly, the batteries in the controller must be changed.

Now you can drive the boat

- 7** The Carrera RC boat and the controller are bonded at the factory.
1. Switch the boat on at the ON/OFF switch. The ON/OFF switch is located under the cover. Turn the switch to ON. Be sure to check that the cover is seated correctly. A connection can only be made when the boat is in contact with the water.

8 The LED on the top of the boat flashes regularly.

- 9** 2. Switch on the controller. The LED on top of the controller will flash rhythmically.

After a few seconds, the LEDs on the boat and on the controller will light continuously, meaning the bind has been made.

10 Adjusting the steering

If when you run the Carrera RC boat it tends to veer either to right or left, the course can be corrected by using the adjusting lever located above the rudder.

Let's practise!

- 11** **Caution: this boat can reach speeds up to 30 km/h.** When first starting, be very careful when operating the gas pedal. Practice running slowly for at least two to three full charges of the battery before you start practising faster manoeuvres.

- Before launching from the bank, make sure the boat and the controller are connected (see above)
- Avoid constant motor operation.
- Bring the boat back to the bank after about 15 minutes to change the battery
- After use, remove or disconnect the battery.
- After the run, turn the switch under the boat's cover back to OFF.
- Never run more than 2 batteries down one after the other. After running down two fully-charged batteries, a pause in running for at least 20 minutes is essential.
- After sailing it, clean the Carrera RC boat carefully
- Always recharge the battery immediately after use to prevent its becoming deep discharged.
- Always keep the Carrera RC battery stored outside the boat.

Controller functions

- 12** You can use the joysticks to carry out precise steering and driving manoeuvres.
Left joystick: Ahead movement at various speeds

Right joystick: steering right and left with variable lock for precise steering. Please also note that, due to the "turning effect", the steering radius of a left-hand curve is greater than that of a right-hand curve.

- 13** Thanks to 2.4 GHz technology, up to 16 boats can be operated on one course at the same time. This is possible even without harmonising frequencies between the racing drivers.

- 14** Attach the lanyard to the eyelet on the controller and let the controller hang from your neck.

Caution! Danger of strangulation!

Troubleshooting

Problem
Boat does not move

Cause: Either the switch on the controller or the boat is set to OFF.
Solution: Switch on

Cause: There is no rechargeable battery in the boat or the battery is too weak.
Solution: Insert charged battery

Cause: The overheat protection has caused the boat's motor to cut out due to excess temperature.
Solution: Switch off the receiver. Leave the RC boat to cool down for approx. 30 minutes.

Cause: The battery or rechargeable battery in the transmitter or boat is too weak.
Solution: Insert new battery or recharged battery.

Cause: The boat is very warm.
Solution: Allow the RC boat to cool down for about 30 minutes.

Cause: The controller is possibly not correctly connected with the receiver in the model.
Solution: Establish contact between model and controller as described under "Now you can drive the boat".

Problem
Boat cannot be controlled

Cause: Boat starts moving unintentionally.
Solution: First switch on the boat, then the controller.

Solution: Please replace the batteries in the controller or switch the controller on.

For the latest version of these operating instructions and information on replacement and spare parts available, please visit carrera-rc.com in the service area.

Errors and changes excepted
Colours / final design – changes excepted
Technical changes and design-related changes excepted
Pictograms – symbolic photos

ENGLISH



DISTRIBUTORS
AUSTRIA

Stadtbauer Marketing +
Vertrieb GmbH
Rennbahn Allee 1
5412 Puch bei Hallein
Austria
Phone ++43 662 88921-0
Fax ++43 662 88921-510
Internet www.carrera-rc.com

Germany

Stadtbauer Marketing +
Vertrieb GmbH
Rennbahn Allee 1
5412 Puch bei Hallein
Austria
Phone ++49 911 7099-0
Fax ++49 911 7099-119
Internet www.carrera-rc.com

HONG KONG

Stadtbauer (HK) Ltd.
Room 1917, North Tower,
Concordia Plaza
1 Science Museum Road,
Tsimshatsui East
Kowloon, Hong Kong
Phone ++852 2722 0620
Fax ++852 2367 0722
Internet www.carrera-rc.com

USA / CANADA / MEXICO

Carrera of America Inc.
2 Corporate Drive
Cranbury, NJ 08512, USA
Phone ++1 609 409 8510
Fax ++1 609 409 8610
Email reception@
carrera-toys.com
Internet www.carrera-rc.com

BENELUX

Stadtbauer Marketing +
Vertrieb GmbH
Landsheerlaan 33
NL-6114 MP Susteren
Email service.benelux@
carrera-toys.com
Internet www.carrera-rc.com

FRANCE

Stadtbauer Marketing +
Vertrieb GmbH
21 B. Route Nationale
Domaine de L'Hancardrie
FR-59320 Ennetières-En-Weppes
Email carrera-toys@orange.fr
Internet www.carrera-rc.com

HUNGARY

Stadtbauer Kft.
Pocz Samu 2/A
HU-1119 Budapest
Phone ++361 260 3960
Fax ++361 260 4266
Email office@stadtbauer-toys.hu
Internet www.carrera-rc.com

POLAND

Stadtbauer Marketing +
Vertrieb GmbH
Rennbahn Allee 1
5412 Puch bei Hallein
Austria
Phone ++48 22 645 14 20
Fax ++48 22 645 14 21
Email office.polen@stadtbauer.at
Internet www.carrera-rc.com

SPAIN / PORTUGAL

Stadtbauer Iberia SLU
C/Fluvia, 97, 1º 1ª
08019 Barcelona - Spain
Phone +34 93 303 63 35
Email contacto@carrera-toys.com
Internet www.carrera-rc.com

CARRERA RC DISTRIBUTORS**AUSTRALIA**

Zimble Pty Ltd.
169 Perry Street
Fairfield, Victoria 3078
Australia
Phone ++ 61 39481 1000
Fax ++ 61 39481 1789
Email sales@zimble.com.au
Internet www.zimble.com.au

BULGARIA

Nantchev Ltd.
78a, Maria Luiza Blvd.
BG-1202 Sofia
Phone ++359 283 22020
Fax ++359 283 22020
Email kvanchev@delbg

CHINA

Shanghai Wowgame Commercial
Company Ltd.
Room 110, Tower 1, German Centre,
89 Kayuan Road, Zhongliang Hi-Tech
Park, Pudong, Shanghai, China
Phone ++ 86 21-53921692
Fax ++ 86 1557749439
Email eddychen@wowgame.com.cn
Internet www.wowgame.net.cn

CZECH REPUBLIC

ConQuest entertainment a.s.
Hloučbánsko 11
CZ-199 00 Píaha 9 - Hloučetin
Phone ++420 284 000 175
Fax ++420 284 000 101
Email radim.kalo@conquest.cz
Internet www.autodrahycz

ESTONIA

Anvol Ltd.
Mäelätee 7
EE-74114 Maarju
Phone ++372 63 88 100
Fax ++372 63 88 101
Email anvol@anvolee
Internet www.anvolee

FINLAND

Toycenter Oy
Kivijurustontie 26
FI-01510 Vantaa
Phone ++358 9 870 2500
Fax ++358 9 870 2501
Email info@toycenter.fi
Internet www.toycenter.fi

HONG KONG

Chun Lee (China) Industrial Limited
7 Swire's Society, 2A, Pace House,
King Palace Plaza,
52A She Tsui Road, Tsuen Wan,
NT, Hong Kong
Email eddychen@yu-lee.com
Mobile: ++ 852 9103 6679

INDIA

Karma Solutions
7 Swire's Society, 2A, Pace House
Vile Parle (W), Mumbai - 400056
Maharashtra
India
Phone ++91 22 26104497
Fax ++91 22 26104497
Mobile ++91 9920075400
Email karmasolutions7@
gmail.com
Internet www.karma-toys.com

ITALY

Mac Due S.p.A.
Società Uniminorale
Via Raffaello Sanzio N. 19
IT-20652 Villasanta MB
Phone ++39 039 2058 1
Fax ++39 039 2058 203
Email info@macdue.eu

LEBANON

F. AQUAD
Pobox1565 Jounieh Lebanon
Twin Towers Building Blk A
Sarba High Way
Jounieh
Lebanon
Phone ++961 9 640505
Fax ++961 9 635473
Email fawad@dm.net.lb

NEW ZEALAND

FW Cave Ltd.
5 To Koa Place
PO Box 300-558, Albany
North Shore City 0752
Auckland
New Zealand
Phone ++64 9 415 7766
Fax ++64 9 415 7099
Email sales@fwcave.co.nz
Internet www.fwcave.co.nz

RUSSIA

Unitoys Ltd.
Minskii, 742
RU 125308 Moscow
Phone ++7 495 276 0286
Fax ++7 499 946 4616
Email office@unitoys.ru
Internet www.unitoys.ru

SERBIA / MONTENEGRO

CoolPlay d.o.o.
Ospodara Jovanova 1
SRB-11000 Beograd
Phone ++38111 20 30 353
Fax ++38111 2 4594 4626
Email office@coolplay.rs
Internet www.coolplay.rs

SLOVAKIA

Drack - Dvůř s.r.o.
Brusničova 7
SK - 83101 Bratislava
Phone ++421 2 4594 4626
Fax ++421 2 4594 4626
Email drack@tinaco.sk
Internet www.drack.sk

SLOVENIA

Orbico d.o.o.
Varovskova 72
SI-1000 Ljubljana
Phone ++386 1 5886 800
Fax ++386 1 5886 900
Internet www.orbico.si

SWITZERLAND

Waldmeier AG
Neustrasse 50
CH-4623 Nauenndorf
Phone ++41 62 387 98 18
Fax ++41 62 387 98 20
Email info@waldmeier.ch
Internet www.waldmeier.ch

UKRAINE

Group of Companies
"Plantat Service"
4 Varna Lipsa Blvd
03680 Kiev, Ukraine
Phone ++38 044 499 37 07
Fax ++38 044 499 37 06
Internet www.pps.ua

UNITED KINGDOM

The Hobby Company Ltd.
Garforth Place, Knowlhill
Milton Keynes MK5 8PG
UK
Phone ++44 1908 209 480
Fax ++44 1908 235 900
Email enquiries@hobbyco.net
Internet www.hobbyco.net

UNITED ARAB EMIRATES

Toyworld Distributor
PO Box 289, Ghuba Building
Al Wehda Street, Sharjah
United Arab Emirates
Phone ++971 6 533 7418
Fax ++971 6 533 6682
Email toyworld@faisholding.net



carrera-rc.com

Stadtbauer Marketing + Vertrieb GmbH · Rennbahn Allee 1 · 5412 Puch bei Hallein · Austria