

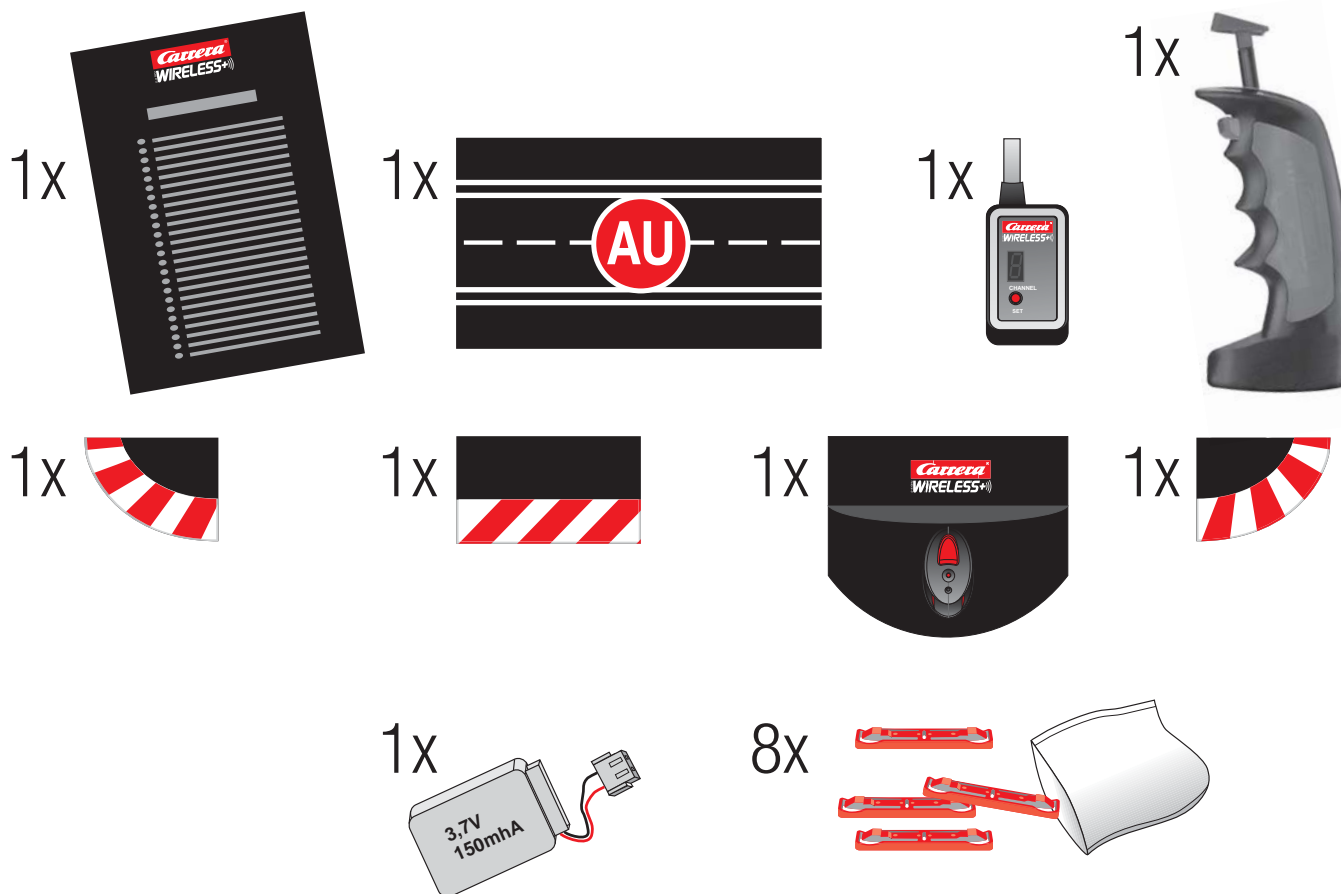


## 10110 2,4 GHZ WIRELESS+ SET SINGLE

- D** Montage- und Betriebsanleitung
- GB USA** Assembly and operating instructions
- F** Instructions de montage et d'utilisation
- E** Instrucciones de uso y montaje
- P** Instruções de montagem e modo de utilização
- I** Istruzioni per il montaggio e l'uso
- NL** Montage- en gebruiksaanwijzing
- S** Monterings- och bruksanvisning
- FIN** Asennus- ja käyttöohjeet
- N** Montajse- og bruksanvisning
- H** Ósszeszerelési és használati útmutató
- PL** Instrukcja obsługi i montażu
- SK** Návod na montáž a pre prevádzku
- CZ** Návod na montáž a pro provoz
- BG** Ръководство за монтаж и експлоатация
- GR** Οδηγίες συναρμολόγησης και λειτουργίας
- RO** Instrucțiuni de montaj și de utilizare
- DK** Monterings- og driftsvejledning
- RC** 安装和使用说明
- J** 取扱説明書取扱説明書の内容は予
- ROK** 조립과 작동 방법
- Arabic** إرشادات التركيب و الاستخدام
- TR** Montaj ve işletme kılavuzu
- RUS** Инструкция по монтажу и эксплуатации

Verpackungsinhalt · Contents of package · Contenu du carton · Contenido de la caja · Conteúdo da embalagem · Contenuto della confezione · Verpakkinginhoud · Innehållet i förpackningen · Pakkauksen sisältö · Innholdet i pakningen · A csomag tartalma · Zawartość opakowania · Obsah balenia · Obsah balení · Съдържание на опаковката · Περιεχόμενα συσκευασίας · Conținutul ambalajului · Emballageinhold · 包装内容 · 梱包内容 · 포장내용물 · محتويات الغلاف · Ambalaj içeriği · Содержимое картона

## 10110 2,4 GHz WIRELESS+ SET SINGLE



<b>Montage- und Betriebsanleitung</b> • Technische und designbedingte Änderungen vorbehalten .....	<b>4</b>
<b>Assembly and operating instructions</b> • Subject to technical and design-related changes .....	<b>6</b>
<b>Instructions de montage et d'utilisation</b> • Sous réserve de modifications techniques ou de design .....	<b>8</b>
<b>Instrucciones de uso y montaje</b> • Se reserva el derecho de efectuar modificaciones técnicas y relacionadas con el diseño .....	<b>10</b>
<b>Instruções de montagem e modo de utilização</b> • Reservados os direitos de alterações técnicas e no design .....	<b>12</b>
<b>Istruzioni per il montaggio e l'uso</b> • Con riserva di modifiche tecniche e di design .....	<b>14</b>
<b>Montage- en gebruiksaanwijzing</b> • Technische en designgeboden afwijkingen voorbehouden .....	<b>16</b>
<b>Monterings- och bruksanvisning</b> • Med reservation för tekniska och designrelaterade ändringar .....	<b>18</b>
<b>Asennus- ja käyttöohjeet</b> • Oikeus tekniikan ja muotoilun aiheuttamiin muutoksiin pidätetään .....	<b>20</b>
<b>Montajse- og bruksanvisning</b> • Det tas forbehold om endringer i teknikk og design .....	<b>22</b>
<b>Ősszeszerelési és használati útmutató</b> • Műszaki és konstrukciós változások előfordulhatnak .....	<b>24</b>
<b>Instrukcja obsługi i montażu</b> • Zastrzegamy sobie możliwość zmian .....	<b>26</b>
<b>Návod na montáž a pre prevádzku</b> • Technické zmeny a zmeny podmienené dizajnom sú vyhradené .....	<b>28</b>
<b>Návod na montáž a pro provoz</b> • Technické změny a změny podmíněné designem jsou vyhrazeny .....	<b>30</b>
<b>Ръководство за монтаж и експлоатация</b> • Запазваме си правото на технически промени и промени, наложени от дизайна .....	<b>32</b>
<b>Οδηγίες συναρμολόγησης και λειτουργίας</b> • Επιφύλαξη τεχνικών - σχεδιαστικών τροποποιήσεων .....	<b>34</b>
<b>Instrucțiuni de montaj și de utilizare</b> • Sub rezerva modificărilor tehnice și de design .....	<b>36</b>
<b>Monterings- og driftsvejledning</b> • Tekniske og designmæssige ændringer forbeholdes .....	<b>38</b>
<b>安装和使用说明</b> • 保留因技术和外观设计需要进行更改的权利 .....	<b>40</b>
<b>取扱説明書取扱説明書の内容は予</b> • 技術・設計上、変更される場合があります。あらかじめご了承ください .....	<b>42</b>
<b>조립과 작동 방법</b> • 기술과 디자인상 변동 소지 있음 .....	<b>44</b>
<b>إرشادات التركيب و الاستخدام</b> • يبقى حق التغييرات التقنية والتصميمية محفوظا .....	<b>46</b>
<b>Montaj ve işletme kılavuzu</b> • Teknik ve dizayna bağlı değişiklikler mahfuz tutulur .....	<b>48</b>
<b>Инструкция по монтажу и эксплуатации</b> • Возможны технические и обусловленные дизайном изменения .....	<b>50</b>

D

GB USA

F

E

P

I

NL

S

FIN

N

H

PL

SK

CZ

BG

GR

RO

DK

RC

J

ROK

Arabic

TR

RUS

## Table of contents

Safety instructions	6
Declaration of Conformity	6
Important information	6
Contents of package	6
Description	6
Before first use	6
Care of the battery	6
Assembly instructions	6
Connecting the receiver	6
Preparation of start	7
Binding process	7
Troubleshooting	7
Maintenance and care	7
Technical specifications	7
Requirement for FCC Part 15	7
Warnings	7

## Welcome

Welcome to the Team Carrera!

The operating instructions contain important information regarding assembly and operation of your Carrera DIGITAL 124/132 WIRELESS+ system.

Please read them carefully and keep them in a safe place afterwards. If you have any queries, please do not hesitate to contact our distributor or visit our websites:

[carrera-toys.com](http://carrera-toys.com) · [carreraclub.com](http://carreraclub.com)

Please check the contents for completeness and possible transport damage. The packaging contains important information and should also be retained.

Please note that WIRELESS+ will only function in conjunction with the Carrera DIGITAL 124/132 Control Unit or Black Box. WIRELESS+ can be used for Carrera DIGITAL 124/132 cars.

Should you need information on operating the 30352 Carrera DIGITAL 124/132 Control Unit or the Black Box, please refer to the operating instructions for the Control Unit.

We hope you will derive a lot of pleasure from your new 2.4 GHz WIRELESS+ Set single for Carrera DIGITAL 124/132.

## Safety instructions

• **WARNING!** Not suitable for children under 36 months. Danger of suffocation due to small parts which may be swallowed. Caution: risk of pinching caused by function.

• Regularly check the track and cars for damage to cables, plugs and housings! Replace defective parts.

• The car racetrack is not suitable for outdoor operation or operation in wet locations! Keep away from liquids.

• Do not place any metal parts onto the track to avoid short-circuits. Do not place the track in the immediate vicinity of delicate objects, as these could be damaged by cars hurled from the track.

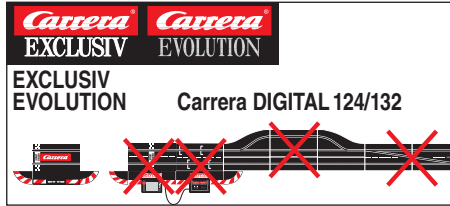
• Pull the plug before cleaning the racetrack! Only use a damp cloth for cleaning, no solvents or chemicals. When it is not in use, store the track in a dry and dust-protected location, preferably in the original cardboard box.

• Do not operate race track at face- or eye-level – risk of injury due to cars being catapulted off the track.

## Declaration of Conformity

The company Stadlbauer Marketing + Vertrieb GmbH, hereby confirms that the product „2.4 GHz WIRELESS+“ complies with the fundamental requirements of Guideline 1999/5/EC (R&TTE). The Declaration of Conformity can be called up from the following address: [www.carrera-toys.com](http://www.carrera-toys.com)

## Important information



Please note that Exclusiv/Evolution (analog system) and Carrera DIGITAL 124/132 (digital system) involve two separate and completely independent systems. We hereby expressly indicate that both systems must be kept separate when setting up the track, i.e. no connecting rail from Exclusiv/Evolution may be used together with the connecting rail and Black Box of the Carrera DIGITAL 124/132, even if only one of the two connecting rails (Exclusiv/Evolution connecting rail or Carrera DIGITAL 124/132 connecting rail and Black Box) is attached to the current supply. Furthermore, no other Carrera DIGITAL 124/132 components (switches, electronic lap counter, pit stop) may be built into an Exclusiv/Evolution course, i.e. via analog operation.

Non-compliance with the above information may result in damage or destruction of the respective Carrera DIGITAL 124/132 components. In this case no warranty may be claimed.

## Contents of package



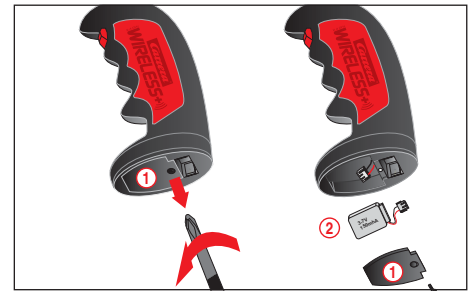
- 1 WIRELESS+ Speed controllers
- 1 WIRELESS+ Receiver
- 1 WIRELESS+ Single charging cradle
- 1 LiPo rechargeable batteries for speed controllers
- 1 Adapter Unit
- 1 Shoulder complement
- 2 Shoulder end sections
- 8 Track section bolts
- 1 Instructions

## Description

WIRELESS+ is the latest new cordless racetrack delight for Carrera DIGITAL124 and Carrera DIGITAL 132. The 2.4 GHz radio technology with frequency-hopping is free of interference and offers a range of up to 15 metres. Thanks to powerful lithium polymer rechargeable battery, continuous play for up to eight hours is possible and stand-by operation for over 80 days. WIRELESS+ offers cordless freedom for up to six drivers at the racetrack.

## Before first use

Before first using the speed controller, the rechargeable battery supplied ② must be inserted in the controller. Unscrew the battery compartment ① on the underside of the speed controller. Connect the battery plug into the socket in the speed controller and put the battery in place in the compartment. Finally screw down the cover of the battery compartment again. The battery is part-loaded at the factory, but it should be charged completely before being used for the first time.



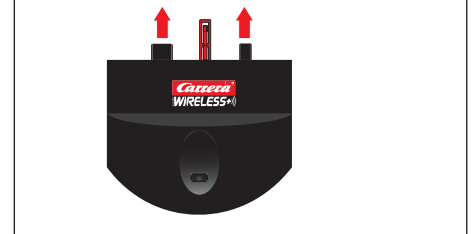
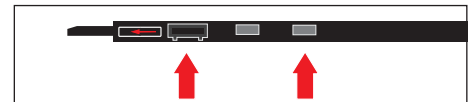
## Care of the battery

To make sure the battery performs well for as long as possible, the following points should be observed regarding its care and storage.

- Before first using them, new batteries should always be charged fully.
- With a fully-charged battery, continuous play is possible for up to eight hours. When the battery power is falling off, range of the speed controller will diminish. As soon as you notice this, the battery should be fully recharged.
- If it is not to be used for an extended period, remove the battery and store the controller at room temperature (16-18 °C) in a dry place. To prevent a deep discharge of the battery, the stored battery should be charged every 2 to 3 months.

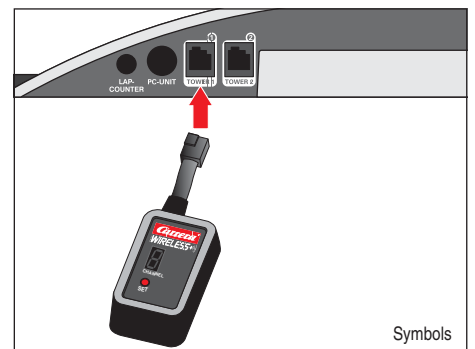
## Assembly instructions

The charging unit is plugged in to the position provided at the side of the adapter unit. This can be placed at any desired position on the track layout. Take care the adapter unit is fitted the right way round!



## Connecting the receiver

Connect the receiver according to the symbol to either of the two sockets on the control unit which are marked Tower 1 and Tower 2. It does not matter whether the receiver is connected to the Black Box 30344 or the Control Unit 30352. For operating six WIRELESS+ speed controllers only one 2.4 GHz receiver is required.



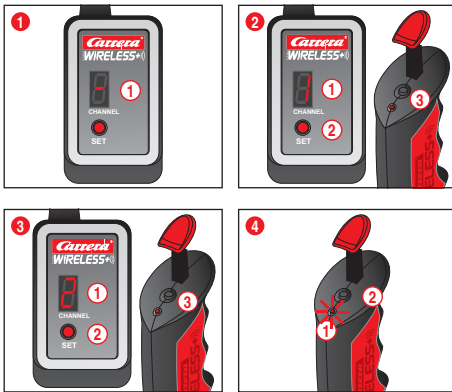
Symbols

## Preparation of start

Before first being used, the WIRELESS+ speed controller should be fully charged. Place the speed controller in the charging cradle and switch on power to the track. While the unit is charging, the LED ① on the speed controller will flash. When charging is completed, the LED ① will light up continuously. When using a lithium polymer rechargeable battery, it is possible to top up the speed controller at any time.



## Binding process



Before the speed controller can be used to control the cars, it must be "bound" to the receiver.

To do this, switch on the control unit.

1. The receiver indicates it is ready for operation by a revolving light signal in the segment display ①.

2. Push the "SET" button ② once until the figure 1 appears in the segment display ①. The number shown is then the address of the car. Switch to the next address by further pressing the button.

Now press the binding button ③ on the top of the speed controller. The speed controller signals a successful binding process with flashing of the LED, while the receiver indicates it by revolving lights in the segments. The binding process is now complete and the speed controller is ready for use.

3. To bind the second speed controller, follow the same procedure. Press the "SET" button ② on the receiver twice, until the figure 2 appears ①. Then press the binding button ③ on the second speed controller.

When the binding process has been successfully carried out, the cars can be coded to the corresponding speed controller. For coding the cars, setting the speed, braking behaviour and tank capacity also see the owner's instructions for the Black Box, Control Unit or car.

4. To display the address set for the speed controller, press once on the binding button ② on the top of the speed controller. The LED ① will then flash, according to the address set.

If the speed controller is not actuated, it switches automatically after about 20 seconds into energy-saving mode. The speed controller can be reactivated by pressing the tappet or the lane-change button.

## Troubleshooting

In case of any malfunctions, please check the following:

- Is the adapter unit correctly installed facing the direction of travel?
- Is the speed controller battery properly connected?
- Is the battery fully charged?
- Does the LED on the controller flash while charging?
- Is the speed controller bound to the receiver?
- Has the speed controller got a duplicate address assignment?

### Note:

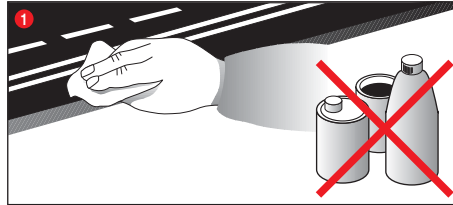
During operation small car parts as spoilers or mirrors may get off or brake due to being original detailed parts of the car model. To avoid this it is possible to remove them before operation.

All Carrera spare parts are available in the webshop:

[carrera-toys.com](http://carrera-toys.com)

Delivery exclusively to Germany, Austria, Netherlands, Belgium and Luxembourg.

## Maintenance and care



To ensure a proper operation of the motor-racing circuit, all race-track components should be regularly cleaned. Pull the plug prior to cleaning.

1. **Racetrack:** Keep the track surface and track slots clean with a dry cloth. Do not use any solvents or chemicals for cleaning. When it is not in use, store the racetrack in a clean and dust-protected location, preferably in the original cardboard box.

## Technical specifications



Output voltage: Toy transformer

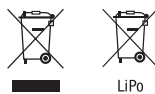
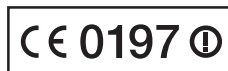


18 V --- 54 VA (Carrera DIGITAL 124)  
14,8 V --- 51,8 VA (Carrera DIGITAL 132)

lithium polymer rechargeable battery: 3,7 --- 150mAh

### Electricity modes:

- 1.) Operating mode = cars are operated via speed controllers
- 2.) Idle mode = speed controllers not activated, no game
- 3.) Stand-by mode = after approx. 20 minutes idle mode the connecting section switches to stand-by mode. LED flashes at long intervals. **CURRENT CONSUMPTION < 1 watt / 1w**  
By operating the speed controller the stand-by mode is finished, the racetrack returns to idle-mode again.
- 4.) Off-state = power supply unit disconnected from mains supply



LiPo



This device is marked by "selective sort through" symbol related to sort through domestic, electric and electronic, waste. This means the product must be treated by a specialized "sorting/collecting" system in accordance with European directive 2002/96/CE, to reduce the impact upon environment. For more precise information, please contact your local administration. Electrical product which are not going through special collecting, are potentially dangerous for environment and human health, because of dangerous substance.



Output voltage: Toy transformer



14,8 V --- 51,8 VA

lithium polymer rechargeable battery: 3,7 --- 150mAh

### Electricity modes:

- 1.) Operating mode = cars are operated via speed controllers
- 2.) Idle mode = speed controllers not activated, no game
- 3.) Stand-by mode = after approx. 20 minutes idle mode the connecting section switches to stand-by mode. LED flashes at long intervals. **CURRENT CONSUMPTION < 1 watt / 1w**  
By operating the speed controller the stand-by mode is finished, the racetrack returns to idle-mode again.
- 4.) Off-state = power supply unit disconnected from mains supply



Conforms to the safety requirements of ASTM F963.

## Requirement for FCC Part 15

Warning: Changes or modifications not expressly approved by the party responsible for compliance could void the user's authority to operate the equipment.

Note: This equipment has been tested and found to comply with the limits for a Class B digital device, pursuant to Part 15 of the FCC Rules. These limits are designed to provide reasonable protection against harmful interference in a residential installation.

This equipment generates, uses and can radiate radio frequency energy and, if not installed and used in accordance with the instructions, may cause harmful interference to radio communications. However, there is no guarantee that interference will not occur in a particular installation.

If this equipment does cause harmful interference to radio or television reception, which can be determined by turning the equipment off and on, the user is encouraged to try to correct the interference by one or more of the following measures:

- Reorient or relocate the receiving antenna.
- Increase the separation between the equipment and receiver.
- Connect the equipment into an outlet on a circuit different from that to which the receiver is connected.
- Consult the dealer or an experienced radio/TV technician for help.

## Warnings

### Guidelines and warnings about using the LiPo battery/batteries:

LiPo rechargeable batteries are much more sensitive than the traditional alkaline or NiMH rechargeables. For this reason all instructions and warnings must be scrupulously observed. Incorrect treatment of LiPo rechargeable batteries may cause a fire. In handling, charging and using the LiPo battery/batteries supplied, you take over all responsibility for the risks attached to lithium batteries.

- Non-rechargeable batteries must not be recharged!
- For recharging batteries, only the charging cradle supplied may be used. If this instruction is disregarded, there is a risk of fire which may endanger your health and/or cause damage to property. NEVER use any other charging unit!
- Rechargeable batteries may only be recharged under adult supervision. When charging, never leave the battery unattended.
- When you recharge the battery, you should always be in the vicinity to keep watch on the process so that you can react to any possible problem.
- If the battery swells or deforms during either discharge or charging process, stop the process immediately. Remove the battery as fast and as carefully as possible and place it on a safe and open area away from any flammable materials, and keep it under observation for at least 15 minutes. If you continue to charge or discharge a battery which has already started to swell or deform, there is danger of fire! Even at the slightest sign of swelling or deforming, the battery must be taken out of service.

- The battery supplied must be charged in a safe place away from flammable materials.
- Store the battery at room temperature (16 - 18 °C) in a dry place. Do not expose the battery to direct sunlight or any other sources of heat. Temperatures over 50 °C are generally to be avoided.
- Always recharge the battery after use to avoid the possibility of its becoming deep discharged. When it is not in use, recharge the battery from time to time, say every 2-3 months. Failure to observe the methods of handling described above may lead to defects.
- When changing batteries do not use any sharp or pointed objects or tools. Avoid damaging the protective foil around the battery at all costs.
- When replacing defective batteries, only the recommended battery types may be used. Damaged or unusable batteries are hazardous waste, and must be disposed of accordingly.
- Never throw batteries, rechargeable or otherwise, on the fire or expose them to high temperatures. This may cause a fire or an explosion.
- The electrolyte and electrolyte vapour in the LiPo batteries are hazardous to health. Always avoid direct contact with electrolyte. If electrolyte makes contact with skin, eyes or other parts of the body, it must immediately be washed out or off with plenty of fresh water and a doctor must be consulted.
- Rechargeable batteries are not toys and must not fall into the hands of children. Keep batteries inaccessible to children.
- The connector clips / battery connections must never be short-circuited!
- The toy is only to be operated with a transformer or power pack designed for use with toys!
- The transformer / the power pack is not a toy!