

NUMBER: 101921

REVISION: A

DATE: 10/04/15

SUBJECT: Velocity Test Procedure

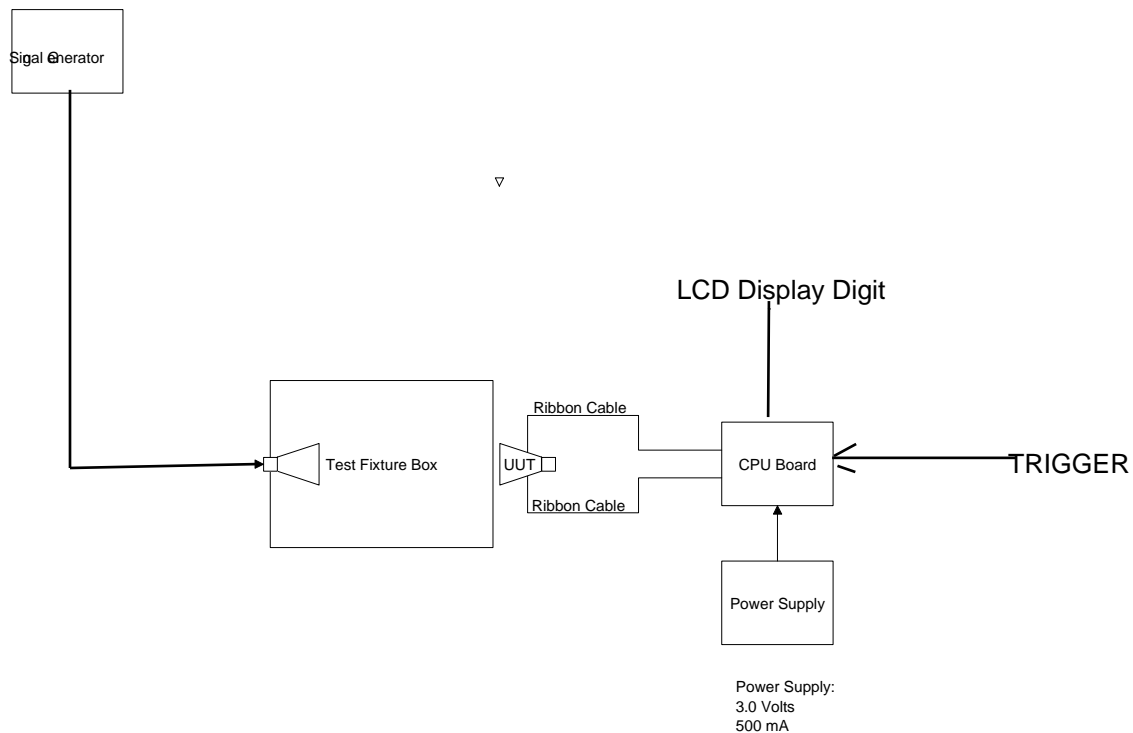
1.0 EQUIPMENT LIST

- Signal generator
- test jig.
- 3.0V power supply
- Velocity CPU board

2.0 TEST PROCEDURE

1) Set the test fixture up per the diagram below.

Velocity Test Fixture System Diagram



NUMBER: 101921

REVISION: A

DATE: 10/04/15

SUBJECT: Velocity Test Procedure

- 6) Once the testing is complete a window will pop up indicating whether the unit under test PASSED or FAILED. You will also see the test results on the left side of the window. Left-click on "OK" to end test.

Radar Gun Tester Ver 1.10

Com Port: []

| TEST | LO-TONE | HI-TONE |
|---------|---------|---------|
| BAND 0: | 70 | 89 |
| BAND 1: | 88 | 71 |
| BAND 2: | 71 | 55 |
| BAND 3: | 72 | 56 |

Lab Dog

Align Result: 84

Pass/Fail %: 70

Unlock

Low-Tone High-Tone

| Min | Max | Min | Max | Min | Max | Min | Max |
|---------|-------|-------|-------|-------|---------|--------|--------|
| 25mph | | 50mph | | 80mph | | 140mph | |
| Band 0: | 23 | 26 | 47 | 52 | Band 2: | 73 | 87 |
| | 57mph | | 80mph | | 100mph | | 160mph |
| Band 1: | 54 | 60 | 74 | 86 | Band 3: | 93 | 107 |
| | | | | | 150 | 170 | |

Error

FAIL

OK

Radar Gun Tester Ver 1.10

Com Port: []

| TEST | LO-TONE | HI-TONE |
|---------|---------|---------|
| BAND 0: | 96 | 99 |
| BAND 1: | 99 | 99 |
| BAND 2: | 91 | 84 |
| BAND 3: | 97 | 89 |

Lab Queen

Align Result: 99

Pass/Fail %: 70

Unlock

Low-Tone High-Tone

| Min | Max | Min | Max | Min | Max | Min | Max |
|---------|-------|-------|-------|-------|---------|--------|--------|
| 25mph | | 50mph | | 80mph | | 140mph | |
| Band 0: | 23 | 26 | 47 | 52 | Band 2: | 73 | 87 |
| | 57mph | | 80mph | | 100mph | | 160mph |
| Band 1: | 54 | 60 | 74 | 86 | Band 3: | 93 | 107 |
| | | | | | 150 | 170 | |

Information

PASS

OK

3.0 DOCUMENT CONTROL

Authorized Approval: _____

NUMBER: 101921

REVISION: A

DATE: 10/04/15

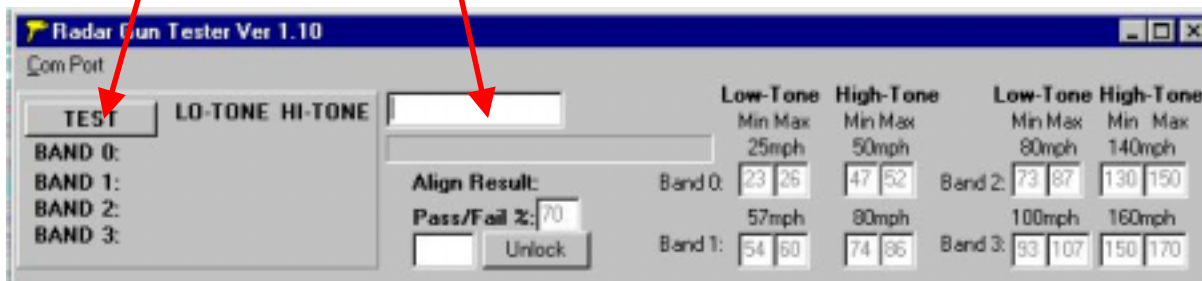
SUBJECT: Velocity Test Procedure

- 2) Start “HORN ATE” radar gun test software.

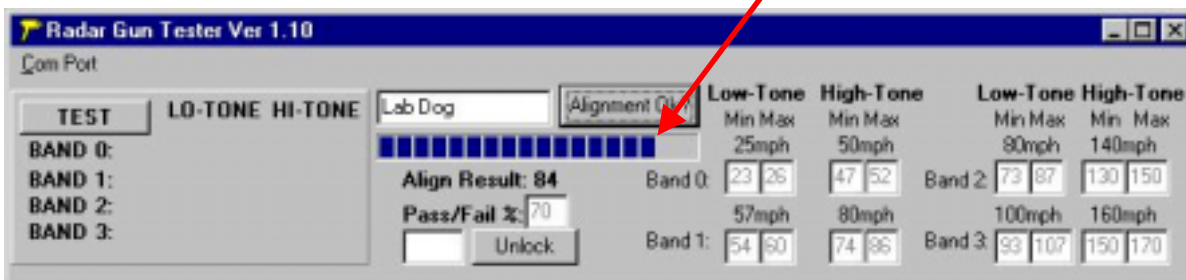
Icon looks like this:



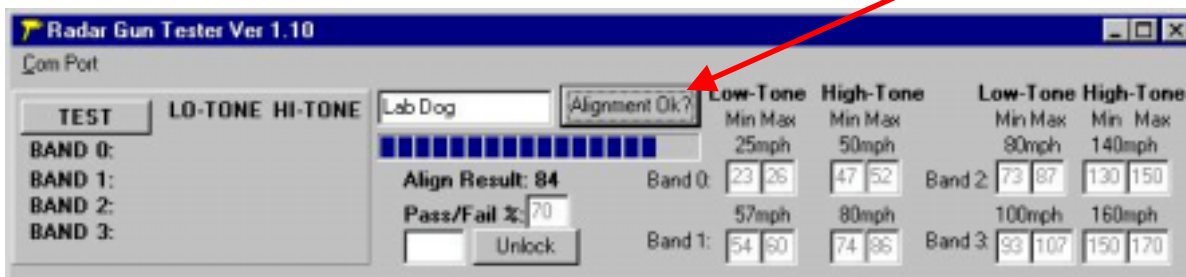
- 3) Type the serial number in the box and then hit the “ENTER” key to start the test (or left-click on the “TEST” button).



- 4) The program will ask if alignment is OK. To align, adjust the verticle and horizontal alignment knobs to get the peak value shown on the “Result” graph.



- 5) After alignment is complete, hit the “ENTER” button or left-click on the “Alignment Ok?” button and the computer program will start testing the unit under test.



TEST PROCEDURE

PAGE:4 of 4

NUMBER: 101921

REVISION: A

DATE: 10/04/15

SUBJECT: Velocity Test Procedure

6) Aim the Speedster at your target, then press and release the trigger button on the handle once. A

"radar" icon will appear in the upper right hand side of the LCD display, and the Speedster will

start reading the current speed of whatever it is pointed at, at same time place the unit on the fixture, Equipment

E4402B will measure the transmitting Frequency and Power

Frequency specification: 961.65MHz +/- 30Hz

Power specification: 60 ~ 80 dBuV/m