



Shenzhen VITE Technology Co., Ltd
 Tel: +86-755-89486194 Fax: +86-755-89486187

FCC PART 15 SUBPART B TEST REPORT

FCC PART 15B

Report Reference No.:	VITE1002001R	
Compiled by (position+printed name+signature)...	File administrators Andy Zhang	<i>Andy Zhang</i>
Name of the organization performing the tests (position+printed name+signature)...	Test Engineer Kendy Wang	<i>Kendy Wang</i>
Approved by (position+printed name+signature)...	Manager Tracy Qi	<i>Tracy Qi</i>
Date of issue.....:	May 18, 2010	
Representative Laboratory Name :	Shenzhen VITE Technology Co., Ltd	
Address.....:	Suite 2123, Building 4, Hongfa Centre, Central Area Baoan, Baoan District, Shenzhen, Guangdong, 518101, P.R. China	
Test Firm:	Bontek Compliance Testing Laboratory Ltd	
Address.....:	1/F, Block East H-3, OCT Eastern Ind. Zone, Qiaocheng East Road, Nanshan, Shenzhen, China	
Applicant's name:	GOLD SCORE VAVAA COMMUNICATION(SHENZHEN) HOLDINGS LIMITED	
Address.....:	13C2-7 of Tianxiang Building, Chegongmiao, Futian, Shenzhen, China	
Test specification:		
Standard.....:	FCC Part 15B	
TRF Originator.....:	Shenzhen VITE Technology Co., Ltd	
Master TRF.....:	Dated 2009-03	
Shenzhen VITE Technology Co., Ltd All rights reserved.		
This publication may be reproduced in whole or in part for non-commercial purposes as long as the Shenzhen VITE Technology Co., Ltd is acknowledged as copyright owner and source of the material. Shenzhen VITE Technology Co., Ltd takes no responsibility for and will not assume liability for damages resulting from the reader's interpretation of the reproduced material due to its placement and context.		
Test item description	laptop computer	
Trade Mark	/	
Model/Type reference.....:	V70A	
Listed Models	/	
Difference description.....:	/	
Power Supply.....:	DC 19V from adapter	
Result.....:	Positive	
FCC ID:	YE8-V70A	

TEST REPORT

Test Report No. :	VITE1002001R	May 18, 2010
		Date of issue

Equipment under Test : laptop computer

Model /Type : V70A

Listed Models : /

Difference description: /

Applicant : GOLD SCORE VAVAA COMMUNICATION(SHENZHEN)
HOLDINGS LIMITED

Address : 13C2-7 of Tianxiang Building, Chegongmiao, Futian,
Shenzhen, China

Manufacturer : GOLD SCORE VAVAA COMMUNICATION(SHENZHEN)
HOLDINGS LIMITED

Address : 13C2-7 of Tianxiang Building, Chegongmiao, Futian,
Shenzhen, China

Test Result according to the standards on page 4:	Positive
--	-----------------

The test report merely corresponds to the test sample.
It is not permitted to copy extracts of these test result without the written permission of the test laboratory.

Contents

1.	<u>TEST STANDARDS</u>	<u>4</u>
2.	<u>SUMMARY</u>	<u>5</u>
2.1.	General Remarks	5
2.2.	Equipment Under Test	5
2.3.	Short description of the Equipment under Test (EUT)	5
2.4.	EUT operation mode	5
2.5.	EUT configuration	5
2.6.	Related Submittal(s) / Grant (s)	6
2.7.	Modifications	6
2.8.	Test Result Summary	6
3.	<u>TEST ENVIRONMENT.....</u>	<u>7</u>
3.1.	Address of the test laboratory	7
3.2.	Test Facility	7
3.3.	Environmental conditions	7
3.4.	Configuration of Tested System	7
3.5.	Statement of the measurement uncertainty	8
3.6.	Equipments Used during the Test	8
4.	<u>TEST CONDITIONS AND RESULTS.....</u>	<u>9</u>
4.1.	Radiated Emission Test	9
4.2.	Conducted Emissions Test	13
5.	<u>TEST SETUP PHOTOS OF THE EUT</u>	<u>16</u>
6.	<u>EXTERNAL AND INTERNAL PHOTOS OF THE EUT</u>	<u>17</u>

1. TEST STANDARDS

The tests were performed according to following standards:

[FCC Rules Part 15 Subpart B - Unintentional Radiators](#)

[ANSI C63.4-2003](#)

2. SUMMARY

2.1. General Remarks

Date of receipt of test sample : March 25, 2010

Testing commenced on : March 26, 2010

Testing concluded on : March 28, 2010

2.2. Equipment Under Test

Power supply system utilised

Power supply voltage : 120V / 60 Hz 115V / 60Hz
 12 V DC 24 V DC
 Other (specified in blank below)

DC 19V from adapter

2.3. Short description of the Equipment under Test (EUT)

A Laptop computer.

For more details, refer to the user's manual of the EUT.

Serial number: Prototype

2.4. EUT operation mode

The EUT has been tested under typical operating condition.

2.5. EUT configuration

The following peripheral devices and interface cables were connected during the measurement:

- supplied by the manufacturer

- supplied by the lab

Key Board

Manufacturer : DELL

Model No. : /

LCD Display

Manufacturer : DELL

Model No. : /

Mouse

Manufacturer : DELL

Model No. : /

2.6. Related Submittal(s) / Grant (s)

This submittal(s) (test report) is intended for **FCC ID: YE8-V70A** filing to comply with the FCC Part 15, Subpart B Rules.

2.7. Modifications

No modifications were implemented to meet testing criteria.

2.8. Test Result Summary

Test Item	Test Requirement	Standard Paragraph	Result
Radiated Emission	FCC PART 15	Section 15.109	PASS
Conducted Emission	FCC PART 15	Section 15.107	PASS

3. TEST ENVIRONMENT

3.1. Address of the test laboratory

Bontek Compliance Testing Laboratory Ltd
 1/F, Block East H-3, OCT Eastern Ind. Zone, Qiaocheng East Road, Nanshan, Shenzhen, China

There is one 3m semi-anechoic chamber and two line conducted labs for final test. The Test Sites meet the requirements in documents ANSI C63.4 and CISPR 22/EN 55022 requirements

3.2. Test Facility

The test facility is recognized, certified, or accredited by the following organizations:

FCC-Registration No.: 338263

Bontek Compliance Testing Laboratory Ltd EMC Laboratory has been registered and fully described in a report filed with the (FCC) Federal Communications Commission. The acceptance letter from the FCC is maintained in our files. Registration 338263, March 24, 2008.

IC Registration No.: 7631A

The 3m alternate test site of Bontek Compliance Testing Laboratory Ltd EMC Laboratory has been registered by Certification and Engineer Bureau of Industry Canada for the performance of with Registration NO.: 7631A on March, 2008.

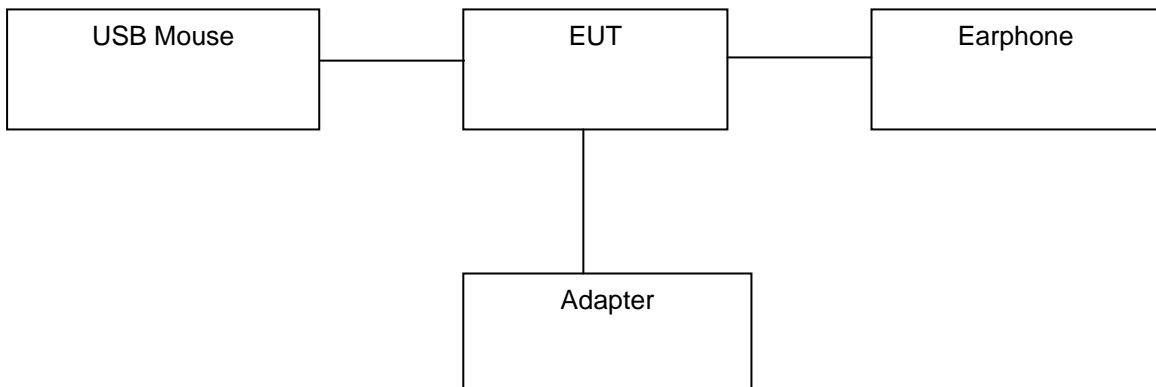
3.3. Environmental conditions

During the measurement the environmental conditions were within the listed ranges:

Temperature:	<u>15-35 ° C</u>
Humidity:	<u>30-60 %</u>
Atmospheric pressure:	<u>950-1050mbar</u>

3.4. Configuration of Tested System

Fig. 2-1 Configuration of Tested System



3.5. Statement of the measurement uncertainty

The data and results referenced in this document are true and accurate. The reader is cautioned that there may be errors within the calibration limits of the equipment and facilities. The measurement uncertainty was calculated for all measurements listed in this test report acc. to CISPR 16 - 4 „Specification for radio disturbance and immunity measuring apparatus and methods – Part 4: Uncertainty in EMC Measurements“ and is documented in the Bontek Compliance Testing Laboratory Ltd quality system acc. to DIN EN ISO/IEC 17025. Furthermore, component and process variability of devices similar to that tested may result in additional deviation. The manufacturer has the sole responsibility of continued compliance of the device.

Hereafter the best measurement capability for Bontek laboratory is reported:

Test	Range	Measurement Uncertainty	Notes
Radiated Emission	30~1000MHz	4.10dB	(1)
Radiated Emission	1~12.75GHz	4.32dB	(1)
Conducted Disturbance	0.15~30MHz	3.22dB	(1)

(1) This uncertainty represents an expanded uncertainty expressed at approximately the 95% confidence level using a coverage factor of k=2.

3.6. Equipments Used during the Test

Radiated Emission					
Item	Test Equipment	Manufacturer	Model No.	Serial No.	Last Cal.
1	ULTRA-BROADBAND ANTENNA	ROHDE & SCHWARZ	HL562	100015	2010/04
2	EMI TEST RECEIVER	ROHDE & SCHWARZ	ESI 26	100009	2010/04
3	RF TEST PANEL	ROHDE & SCHWARZ	TS / RSP	335015/ 0017	2010/04
4	TURNTABLE	ETS	2088	2149	2010/04
5	ANTENNA MAST	ETS	2075	2346	2010/04
6	EMI TEST SOFTWARE	ROHDE & SCHWARZ	ESK1	N/A	2010/04
7	Loop Antenna	ROHDE & SCHWARZ	HFH2-Z2	8335211/0035	2010/04

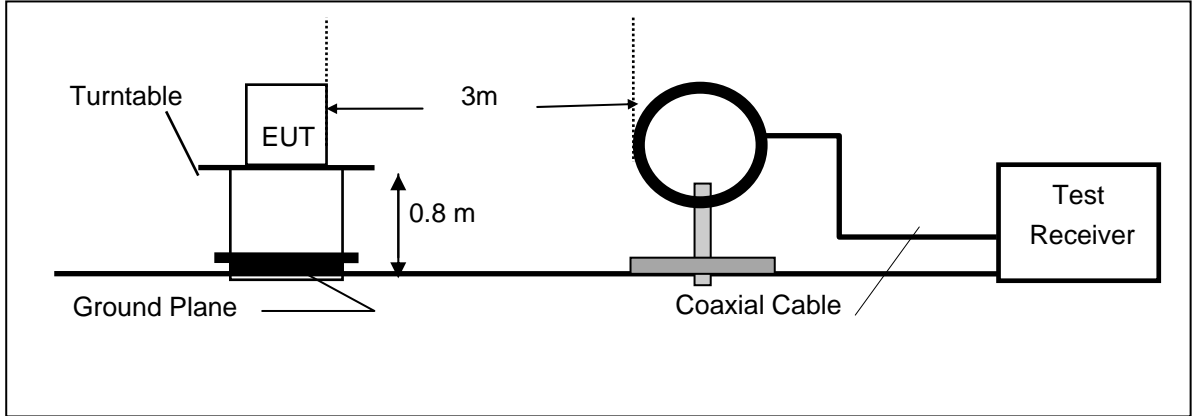
Conducted Emissions(AC manis input port & Telecommunication ports)					
Item	Test Equipment	Manufacturer	Model No.	Serial No.	Last Cal.
1	EMI Test Receiver	ROHDE & SCHWARZ	ESCI	101224	2010/04
2	Artificial Mains	ROHDE & SCHWARZ	ESH2-Z5	100522	2010/04
3	Pulse Limiter	ROHDE & SCHWARZ	ESHSZ2	100212	2010/04
4	EMI Test Software	ROHDE & SCHWARZ	ESK1	N/A	2010/04

4. TEST CONDITIONS AND RESULTS

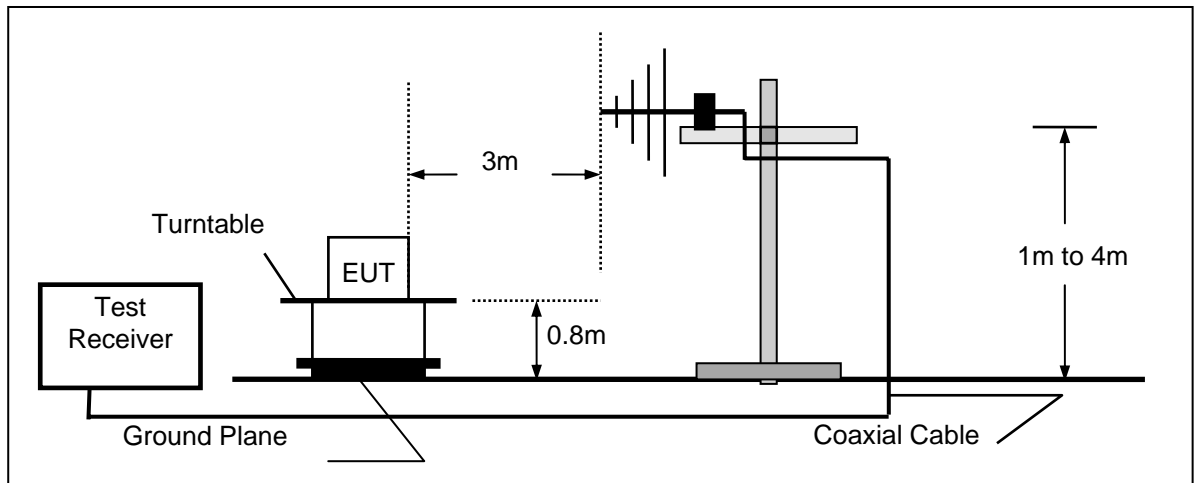
4.1. Radiated Emission Test

TEST CONFIGURATION

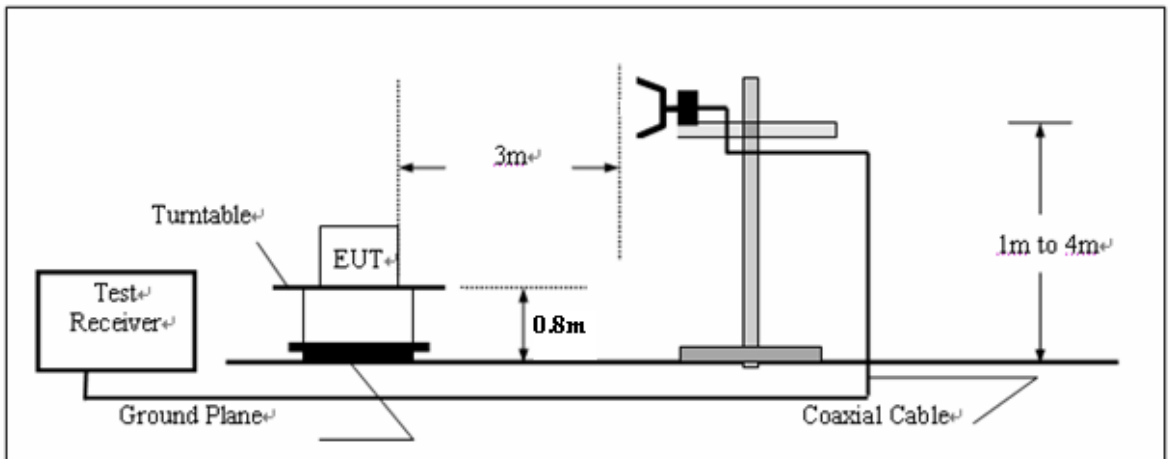
(A) Radiated Emission Test Set-Up, Frequency Below 30MHz



(B) Radiated Emission Test Set-Up, Frequency below 1000MHz



(C) Radiated Emission Test Set-Up, Frequency above 1000MHz



Field Strength Calculation

The field strength is calculated by adding the Antenna Factor and Cable Factor and subtracting the Amplifier Gain and Duty Cycle Correction Factor(if any) from the measured reading. The basic equation with a sample calculation is as follows:

$$FS = RA + AF + CL - AG$$

Where FS = Field Strength	CL = Cable Attenuation Factor (Cable Loss)
RA = Reading Amplitude	AG = Amplifier Gain
AF = Antenna Factor	

RADIATION LIMIT

For unintentional device, according to § 15.109(a), except for Class A digital devices, the field strength of radiated emissions from unintentional radiators at a distance of 3 meters shall not exceed the following values:

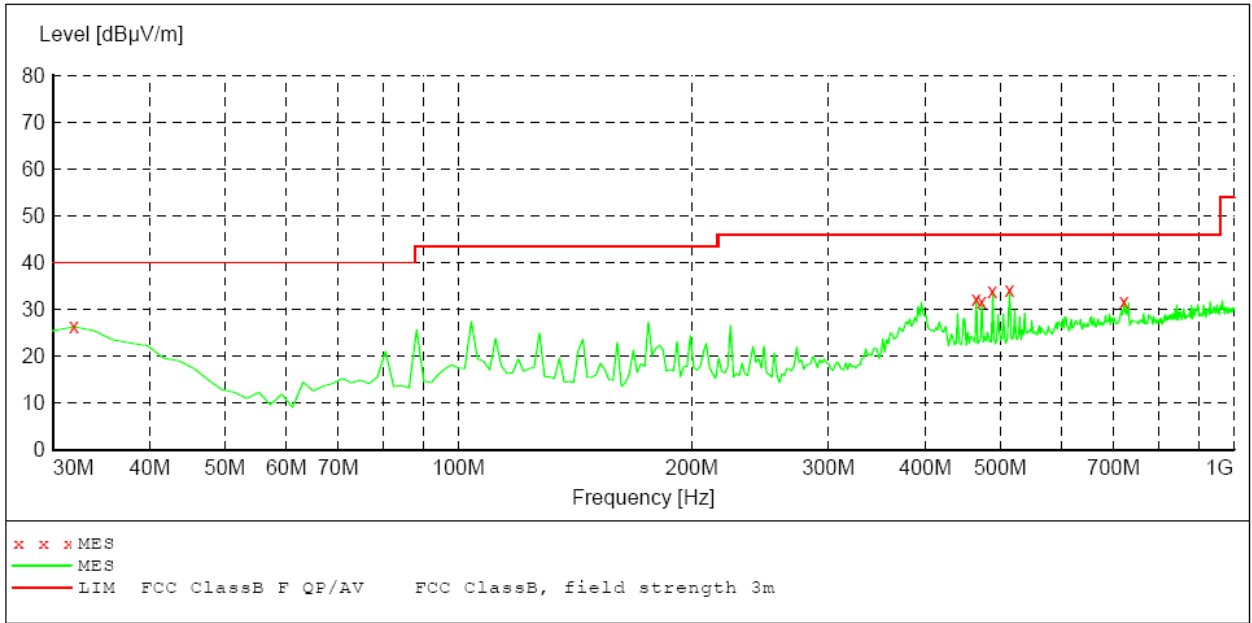
Frequency (MHz)	Distance (Meters)	Radiated (dBµV/m)	Radiated (µV/m)
30-88	3	40.0	100
88-216	3	43.5	150
216-960	3	46.0	200
Above 960	3	54.0	500

For intentional device, according to § 15.209(a), the general requirement of field strength of radiated emissions from intentional radiators at a distance of 3 meters shall not exceed the above table.

Test Procedure

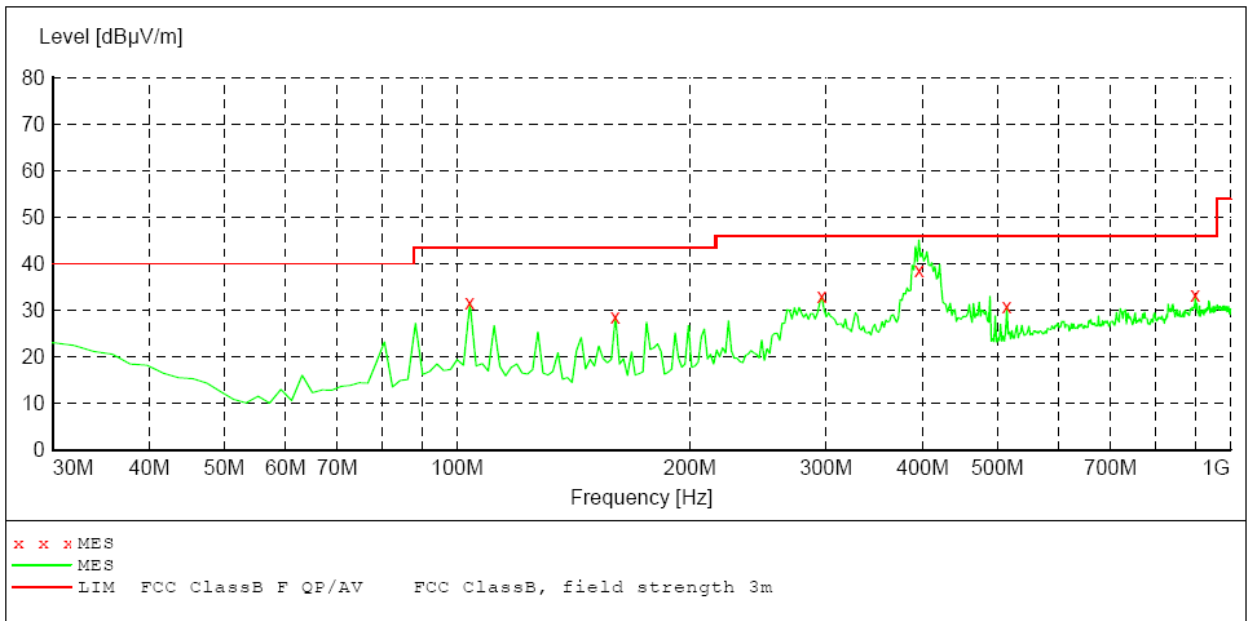
1. The EUT is placed on a turntable, which is 0.8m above ground plane.
2. The turntable shall be rotated for 360 degrees to determine the position of maximum emission level.
3. EUT is set 3m away from the receiving antenna, which is varied from 1m to 4m to find out the highest emissions.
4. Maximum procedure was performed on the six highest emissions to ensure EUT compliance.
5. And also, each emission was to be maximized by changing the polarization of receiving antenna both horizontal and vertical.
6. Repeat above procedures until the measurements for all frequencies are complete.

Radiation Test Result



MEASUREMENT RESULT:

Frequency MHz	Level dBµV/m	Transd dB	Limit dBµV/m	Margin dB	Det.	Height cm	Azimuth deg	Polarization
31.940000	26.30	20.1	40.0	13.7	QP	100.0	218.00	VERTICAL
465.400000	32.30	20.1	46.0	13.7	QP	100.0	174.00	VERTICAL
473.200000	31.60	20.1	46.0	14.4	QP	100.0	174.00	VERTICAL
488.750000	33.80	20.1	46.0	12.2	QP	100.0	174.00	VERTICAL
514.020000	34.10	20.5	46.0	11.9	QP	100.0	174.00	VERTICAL
722.000000	31.80	24.0	46.0	14.2	QP	100.0	283.00	VERTICAL



MEASUREMENT RESULT:

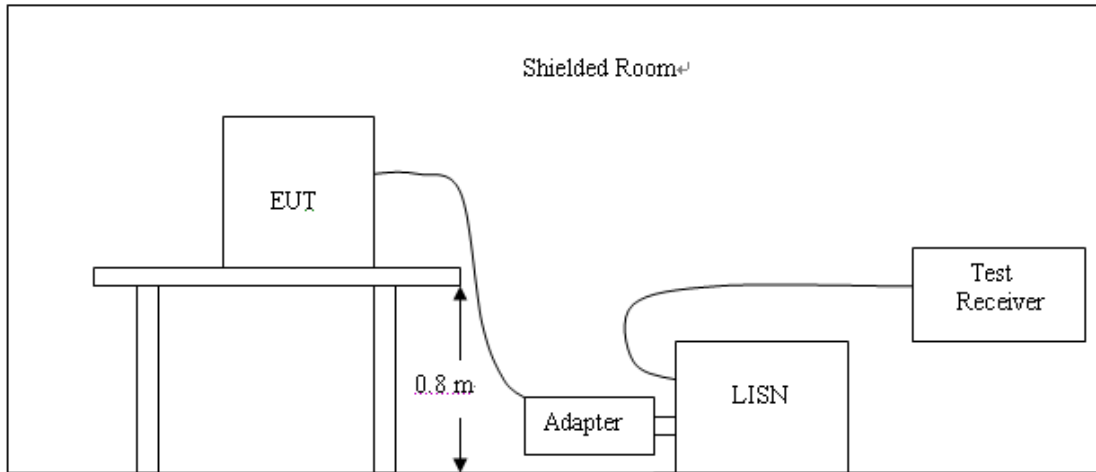
Frequency MHz	Level dBµV/m	Transd dB	Limit dBµV/m	Margin dB	Det.	Height cm	Azimuth deg	Polarization
103.860000	31.60	14.4	43.5	11.9	QP	200.0	184.00	HORIZONTAL
160.200000	28.70	10.4	43.5	14.8	QP	200.0	206.00	HORIZONTAL
296.300000	33.00	13.7	46.0	13.0	QP	100.0	226.00	HORIZONTAL
395.900000	38.60	20.0	46.0	7.4	QP	100.0	317.00	HORIZONTAL
514.020000	30.80	20.5	46.0	15.2	QP	200.0	228.00	HORIZONTAL
900.860000	33.30	25.4	46.0	12.7	QP	100.0	248.00	HORIZONTAL

Remark:

- (1) Measuring frequencies from 30 MHz to the 1 GHz.
- (2) * denotes emission frequency which appearing within the Restricted Bands specified in provision of 15.205, then the general radiated emission limits in 15.209 apply.
- (3) Data of measurement within this frequency range shown “---” in the table above means the reading of emissions are attenuated more than 20dB below the permissible limits or the field strength is too small to be measured.
- (4) The IF bandwidth of EMI Test Receiver was 120KHz for measuring from 30 MHz to 1 GHz and 1 MHz for measuring above 1 GHz
- (5) Radiated emission test above 1GHz up to 2GHz was verified, and no any emission was found except system noise floor.

4.2. Conducted Emissions Test

TEST CONFIGURATION



TEST PROCEDURE

- 1 The equipment was set up as per the test configuration to simulate typical actual usage per the user's manual. The EUT is a tabletop system, a wooden table with a height of 0.8 meters is used and is placed on the ground plane as per ANSI C63.4.
- 2 Support equipment, if needed, was placed as per ANSI C63.4.
- 3 All I/O cables were positioned to simulate typical actual usage as per ANSI C63.4.
- 4 The EUT received DC6V power from the adapter, the adapter received AC120V/60Hz power through a Line Impedance Stabilization Network (LISN) which supplied power source and was grounded to the ground plane.
- 5 All support equipments received AC power from a second LISN, if any.
- 6 The EUT test program was started. Emissions were measured on each current carrying line of the EUT using a spectrum Analyzer / Receiver connected to the LISN powering the EUT. The LISN has two monitoring points: Line 1 (Hot Side) and Line 2 (Neutral Side). Two scans were taken: one with Line 1 connected to Analyzer / Receiver and Line 2 connected to a 50 ohm load; the second scan had Line 1 connected to a 50 ohm load and Line 2 connected to the Analyzer / Receiver.
- 7 Analyzer / Receiver scanned from 150 KHz to 30MHz for emissions in each of the test modes.
- 8 During the above scans, the emissions were maximized by cable manipulation.

Conducted Power Line Emission Limit

For unintentional device, according to § 15.107(a) Line Conducted Emission Limits is as following :

Frequency (MHz)	Maximum RF Line Voltage (dBµV)			
	CLASS A		CLASS B	
	Q.P.	Ave.	Q.P.	Ave.
0.15 - 0.50	79	66	66-56*	56-46*
0.50 - 5.00	73	60	56	46
5.00 - 30.0	73	60	60	50

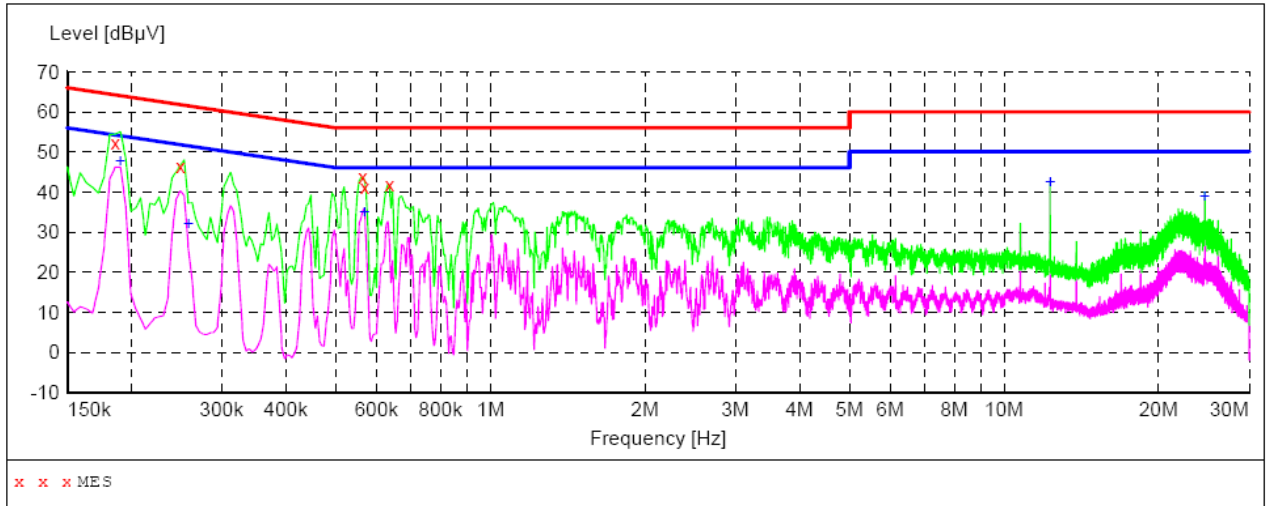
* Decreasing linearly with the logarithm of the frequency

For intentional device, according to §15.207(a) Line Conducted Emission Limit is same as above table.

TEST RESULTS

SCAN TABLE: "Voltage (150K-30M) FIN"

Short Description: 150K-30M Voltage



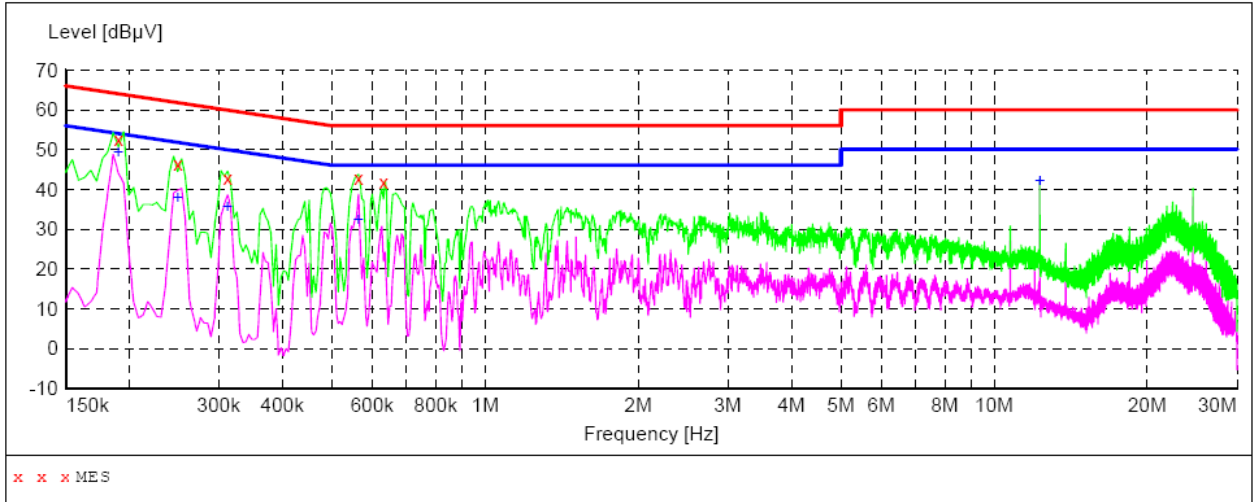
MEASUREMENT RESULT:

Frequency MHz	Level dBµV	Transd dB	Limit dBµV	Margin dB	Detector	Line	PE
0.186000	52.40	10.7	64	11.8	QP	L1	GND
0.249000	46.40	10.7	62	15.4	QP	L1	GND
0.564000	43.90	10.2	56	12.1	QP	L1	GND
0.568500	41.30	10.2	56	14.7	QP	L1	GND
0.636000	41.70	10.2	56	14.3	QP	L1	GND

MEASUREMENT RESULT:

Frequency MHz	Level dBµV	Transd dB	Limit dBµV	Margin dB	Detector	Line	PE
0.190500	47.70	10.7	54	6.3	AV	L1	GND
0.258000	32.00	10.7	52	19.5	AV	L1	GND
0.568500	34.90	10.2	46	11.1	AV	L1	GND
12.286500	42.40	10.5	50	7.6	AV	L1	GND
24.576000	38.80	10.9	50	11.2	AV	L1	GND

SCAN TABLE: "Voltage (150K-30M) FIN"
 Short Description: 150K-30M Voltage



MEASUREMENT RESULT:

Frequency MHz	Level dBµV	Transd dB	Limit dBµV	Margin dB	Detector	Line	PE
0.190500	52.80	10.7	64	11.2	QP	N	GND
0.249000	46.50	10.7	62	15.3	QP	N	GND
0.312000	43.00	10.5	60	16.9	QP	N	GND
0.564000	42.70	10.2	56	13.3	QP	N	GND
0.631500	41.80	10.2	56	14.2	QP	N	GND

MEASUREMENT RESULT:

Frequency MHz	Level dBµV	Transd dB	Limit dBµV	Margin dB	Detector	Line	PE
0.190500	49.40	10.7	54	4.6	AV	N	GND
0.249000	38.00	10.7	52	13.8	AV	N	GND
0.312000	35.80	10.5	50	14.1	AV	N	GND
0.564000	32.30	10.2	46	13.7	AV	N	GND
12.286500	42.10	10.5	50	7.9	AV	N	GND

5. Test Setup Photos of the EUT



6. External and Internal Photos of the EUT

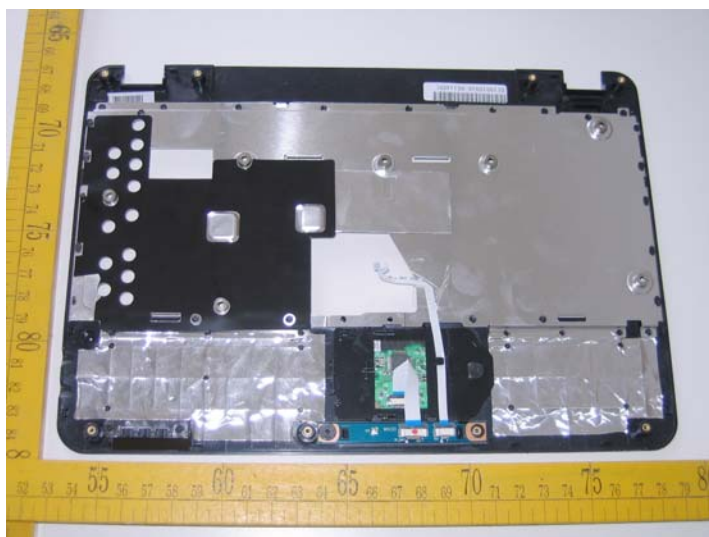
External Photos

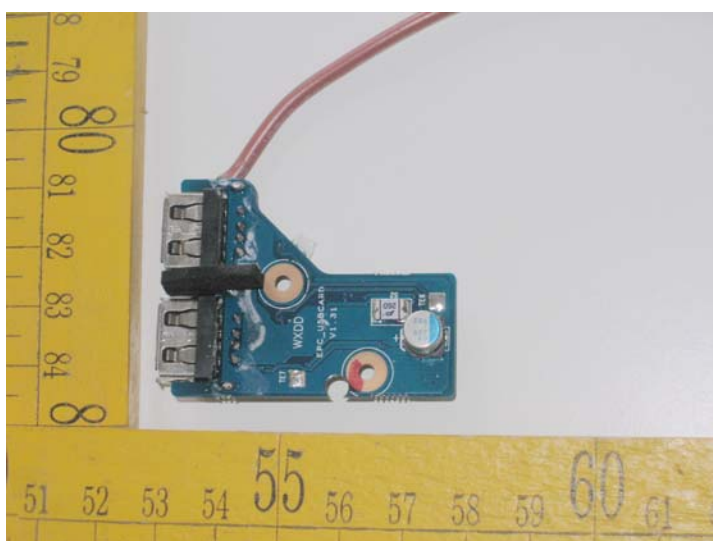
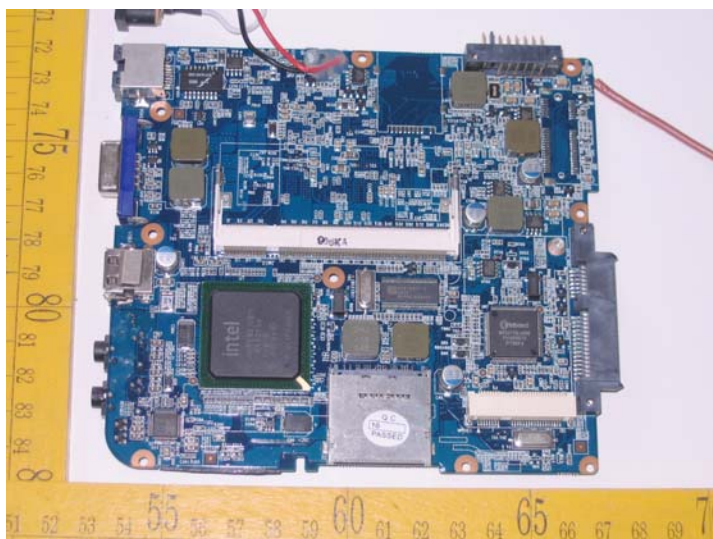
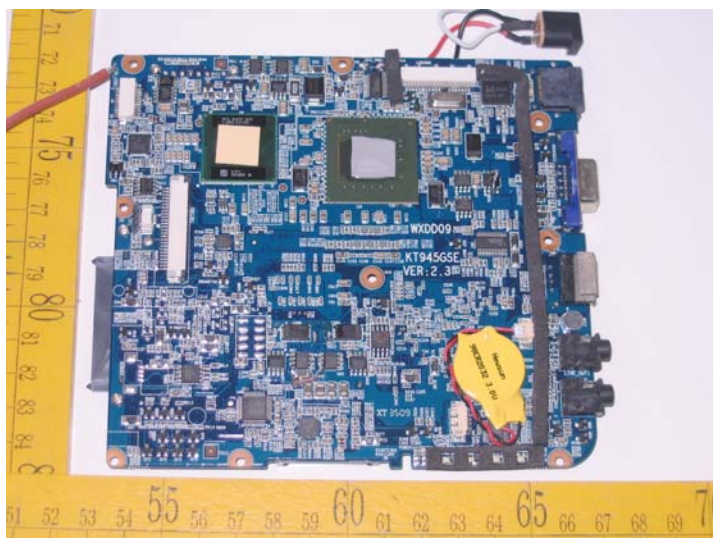


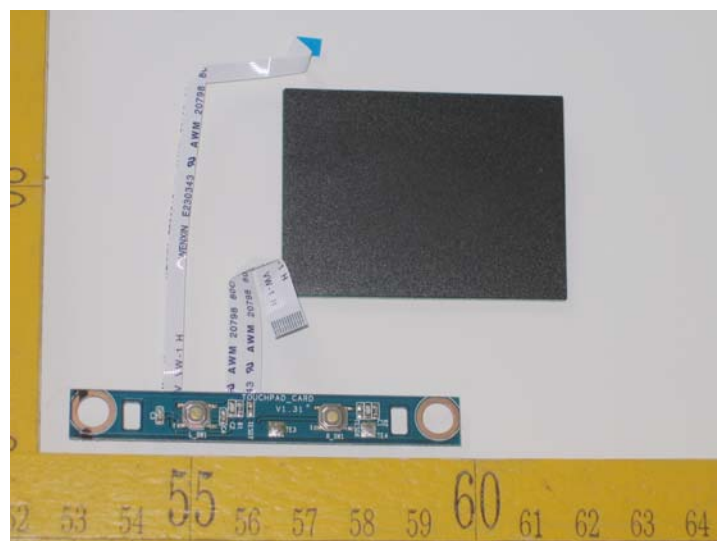
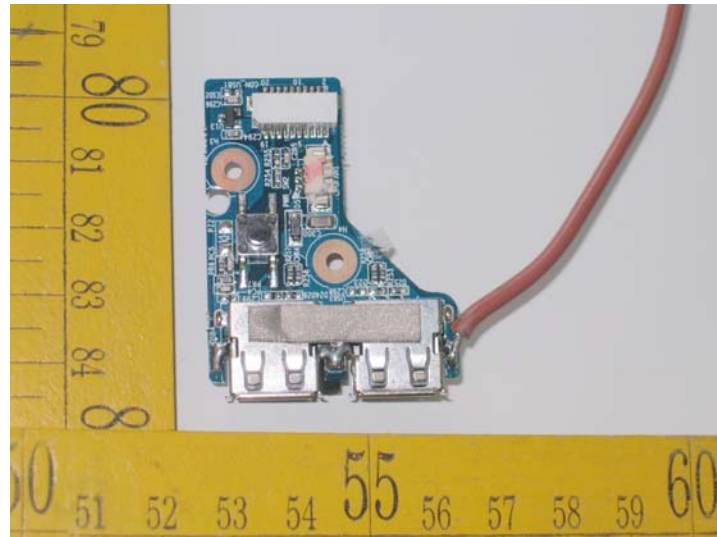


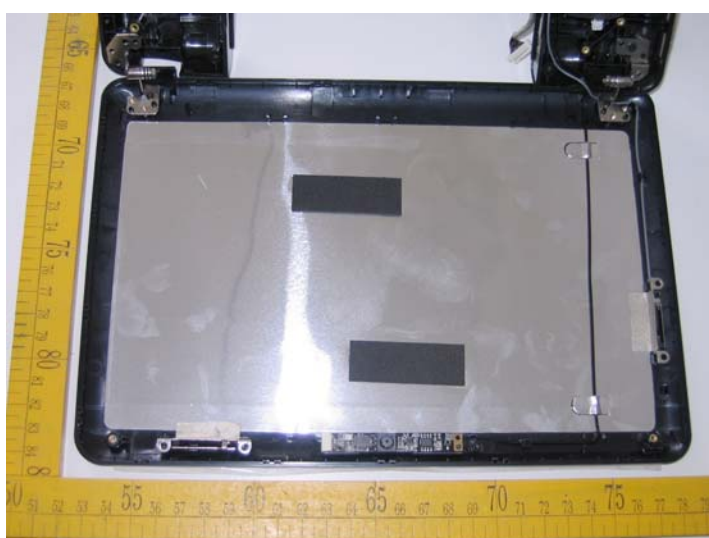
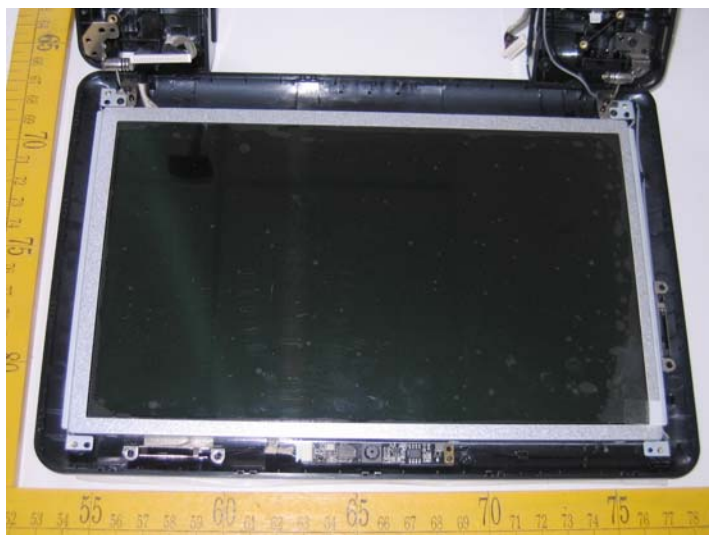
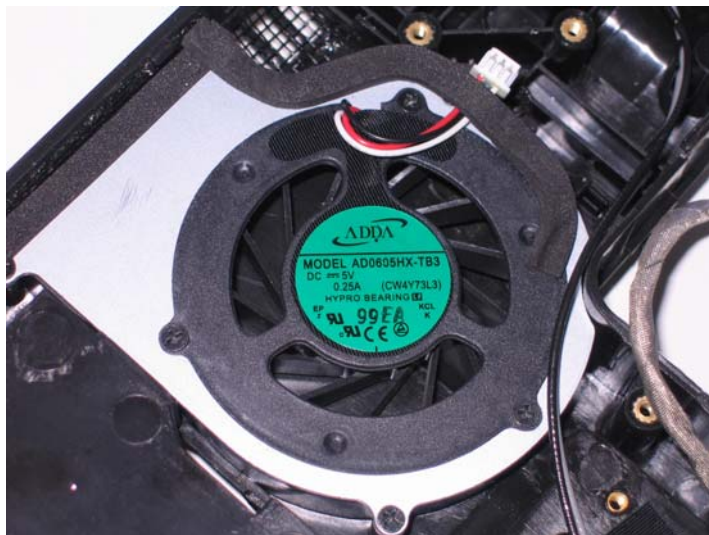
Internal Photos

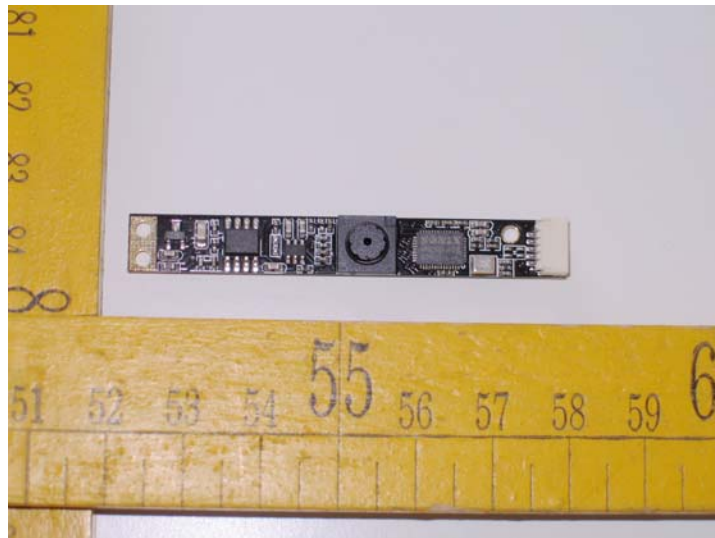












.....End of Report.....