

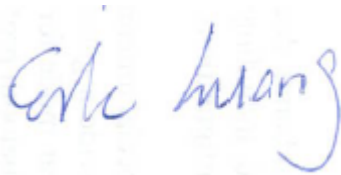
FCC SAR Test Report

APPLICANT : DT Research Inc.
EQUIPMENT : WLAN Module
BRAND NAME : DT Research Inc.
MODEL NAME : 600B
FCC ID : YE3600B
STANDARD : FCC 47 CFR Part 2 (2.1093)
ANSI/IEEE C95.1-1992
IEEE 1528-2003
FCC OET Bulletin 65 Supplement C (Edition 01-01)

The product was installed into Mobile Tablet (Brand Name: DT Research Inc., Model Name:DT398, FCC ID:YE3800B) during test.

The product was completely tested on Mar. 18, 2013. We, SPORTON INTERNATIONAL INC., would like to declare that the tested sample has been evaluated in accordance with the procedures and shown the compliance with the applicable technical standards.

The test results in this report apply exclusively to the tested model / sample. Without written approval of SPORTON INTERNATIONAL INC., the test report shall not be reproduced except in full.



Reviewed by: Eric Huang / Vice Manager



Approved by: Jones Tsai / Manager



SPORTON INTERNATIONAL INC.

No. 52, Hwa Ya 1st Rd., Hwa Ya Technology Park, Kwei-Shan Hsiang, Tao Yuan Hsien, Taiwan, R.O.C.



Table of Contents

1. Statement of Compliance	4
2. Administration Data	5
2.1 Testing Laboratory.....	5
2.2 Applicant	5
2.3 Manufacturer.....	5
2.4 Application Details.....	5
3. General Information	6
3.1 Description of Equipment Under Test (EUT)	6
3.2 Maximum RF output power among production units	7
3.3 Applied Standard.....	9
3.4 Device Category and SAR Limits	9
3.5 Test Conditions.....	9
4. Specific Absorption Rate (SAR)	10
4.1 Introduction	10
4.2 SAR Definition.....	10
5. SAR Measurement System	11
5.1 E-Field Probe	11
5.2 Data Acquisition Electronics (DAE)	12
5.3 Robot	12
5.4 Measurement Server.....	13
5.5 Phantom.....	13
5.6 Device Holder.....	14
5.7 Data Storage and Evaluation	15
5.8 Test Equipment List.....	17
6. Tissue Simulating Liquids	18
7. SAR System Verification	20
7.1 Purpose of System Performance check	20
7.2 System Setup.....	20
7.3 SAR System Verification Results	21
8. EUT Testing Position	21
9. Measurement Procedures	22
9.1 Spatial Peak SAR Evaluation.....	22
9.2 Area & Zoom Scan Procedures.....	23
9.3 Volume Scan Procedures.....	24
9.4 SAR Averaged Methods	24
9.5 Power Drift Monitoring.....	24
10. Conducted RF Output Power (Unit: dBm)	25
11. Exposure Positions Consideration	33
12. SAR Test Results	35
12.1 Test Records for Body SAR Test	35
12.2 Repeated SAR Measurement	37
12.3 Highest SAR Plot	38
12.4 Simultaneous Multi-band Transmission Analysis.....	40
13. Uncertainty Assessment	41
14. References	44
Appendix A. Plots of System Performance Check	
Appendix B. Plots of SAR Measurement	
Appendix C. DASYS Calibration Certificate	
Appendix D. Test Setup Photos	



1. Statement of Compliance

The maximum results of Specific Absorption Rate (SAR) found during testing for DT Research Inc. WLAN Module, DT Research Inc., 600B, are as follows.

<Highest Reported standalone SAR Summary>

Frequency Band	Exposure Position	Reported 1g-SAR (W/kg)	Equipment Class	Highest Reported 1g-SAR (W/kg)
WLAN 5.2GHz Band	Body (0 cm Gap)	0.69	NII	0.69
WLAN 5.3GHz Band	Body (0 cm Gap)	0.50		
WLAN 5.5GHz Band	Body (0 cm Gap)	0.44		
WLAN 5.8GHz Band	Body (0 cm Gap)	1.45	DTS	1.45
WLAN 2.4GHz Band	Body (0 cm Gap)	0.35		

<Highest Simultaneous transmission SAR>

Frequency Band	Equipment Class	Exposure Position	Highest Reported Simultaneous Transmission 1g-SAR (W/kg)
CDMA BC0	PCB	Edge1 (0 cm Gap)	1.48
Bluetooth	DSS		

Remark:

The highest simultaneous transmission is scalar summation of reported standalone SAR per FCC KDB 690783 D01 v01r02, and scalar SAR summation of all possible simultaneous transmission scenarios are < 1.6W/kg

This device is in compliance with Specific Absorption Rate (SAR) for general population/uncontrolled exposure limits (1.6 W/kg) specified in FCC 47 CFR part 2 (2.1093) and ANSI/IEEE C95.1-1992, and had been tested in accordance with the measurement methods and procedures specified in IEEE 1528-2003 and FCC OET Bulletin 65 Supplement C (Edition 01-01).



2. Administration Data

2.1 Testing Laboratory

Test Site	SPORTON INTERNATIONAL INC.
Test Site Location	No. 52, Hwa Ya 1 st Rd., Hwa Ya Technology Park, Kwei-Shan Hsiang, Tao Yuan Hsien, Taiwan, R.O.C. TEL: +886-3-327-3456 FAX: +886-3-328-4978

2.2 Applicant

Company Name	DT Research Inc.
Address	6F, NO. 1, NingPo E. St., Taipei, 100 Taiwan, R. O. C.

2.3 Manufacturer

Company Name	DT Research Inc.
Address	6F, NO. 1, NingPo E. St., Taipei, 100 Taiwan, R. O. C.

2.4 Application Details

Date of Start during the Test	Mar. 15, 2013
Date of End during the Test	Mar. 18, 2013



3. General Information

3.1 Description of Equipment Under Test (EUT)

Product Feature & Specification	
EUT	WLAN Module
Brand Name	DT Research Inc.
Model Name	600B
FCC ID	YE3600B
TX Frequency	WLAN 2.4GHz Band: 2412 MHz ~ 2462 MHz WLAN 5.2GHz Band: 5180 MHz ~ 5240 MHz WLAN 5.3GHz Band: 5260 MHz ~ 5320 MHz WLAN 5.5GHz Band: 5500 MHz ~ 5700 MHz WLAN 5.8GHz Band: 5745 MHz ~ 5825 MHz Bluetooth: 2402 MHz ~ 2480 MHz
Uplink Modulations	802.11b: DSSS (DBPSK / DQPSK / CCK) 802.11a/g/n: OFDM (BPSK / QPSK / 16QAM / 64QAM) Bluetooth : GFSK Bluetooth EDR : $\pi/4$ -DQPSK, 8-DPSK Bluetooth 4.0 LE: GFSK
Remark: 1. The above EUT's information was declared by manufacturer. Please refer to the specifications or user's manual for more detailed description. 2. 5600 MHz ~ 5650 MHz is notched.	

The product was installed into Mobile Tablet (Brand Name: DT Research Inc., Model Name:DT398, FCC ID:YE3800B) during test.

Product Feature & Specification	
Host	Mobile Tablet
Brand Name	DT Research Inc
Model Name	DT398
FCC ID	YE3800B
IMEI Code	357485042096406
Tx Frequency	CDMA2000 BC0: 824.70 MHz ~ 848.31 MHz CDMA2000 BC1: 1851.25 MHz ~ 1908.75 MHz
Antenna Type	WWAN: PIFA Antenna WLAN: PIFA Antenna Bluetooth: PIFA Antenna
Uplink Modulations	CDMA2000 : QPSK CDMA2000 1xEV-DO : 8PSK
Remark: 1. Voice call is not supported.	

3.2 Maximum RF output power among production units

WLAN2.4GHz	IEEE 802.11 Ant 0 (Main antenna) average power(dBm)		
	Ch1	Ch6	Ch11
802.11b	17	17	17
802.11g	13	16	13
802.11n_20M	12	16	12
802.11n_40M	Ch3	Ch6	CH9
	9.5	12.5	8.5

WLAN2.4GHz	IEEE 802.11 Ant 1 (Aux antenna) average power(dBm)		
	Ch1	Ch6	Ch11
802.11b	16	14.5	15.5
802.11g	12	15	12
802.11n_20M	11	15.5	11
802.11n_40M	Ch3	Ch6	CH9
	8	11.5	9

WLAN2.4GHz	IEEE 802.11 Ant 0+1 (MIMO antenna) average power(dBm)		
	Ch1	Ch6	Ch11
802.11n_20M	14.5	16	13.5
802.11n_40M	Ch3	Ch6	CH9
	10	15.5	10

Mode / Band	Bluetooth Average power(dBm)			
	1Mbps (GFSK)	2Mbps ($\pi/4$ -DQPSK)	3Mbps (8-DPSK)	BT4.0-LE (GFSK)
2.4 GHz Bluetooth	6	3	3	4



WLAN5GHz	IEEE 802.11 Ant 0 (Main antenna) average power(dBm)							
	WLAN5.2GHz band		WLAN5.3GHz band		WLAN5.5GHz band			WLAN5.8GHz band
802.11a	16.5		16.5		16.5			14.5
802.11n_20M	17		17		17			15
802.11n_40M	Ch38	Ch46	CH54	Ch62	Ch102	Ch110	Ch134	20
	13	16.5	16.5	12	15	16.5	16.5	

WLAN5GHz	IEEE 802.11 Ant 1 (Aux antenna) average power(dBm)							
	WLAN5.2GHz band		WLAN5.3GHz band		WLAN5.5GHz band			WLAN5.8GHz band
802.11a	16		16		16			16
802.11n_20M	16		16		16			16
802.11n_40M	Ch38	Ch46	CH54	Ch62	16			20.5
	13	16	15.5	12.5				

WLAN5GHz	IEEE 802.11 Ant 0+1 (MIMO antenna) average power(dBm)							
	WLAN5.2GHz band		WLAN5.3GHz band		WLAN5.5GHz band			WLAN5.8GHz band
802.11n_20M	16.5		16.5		16.5			17
802.11n_40M	Ch38	Ch46	16		16.5			16.5
	13.5	16.5						



3.3 Applied Standard

The Specific Absorption Rate (SAR) testing specification, method, and procedure for this device is in accordance with the following standards:

- FCC 47 CFR Part 2 (2.1093)
- ANSI/IEEE C95.1-1992
- IEEE 1528-2003
- FCC OET Bulletin 65 Supplement C (Edition 01-01)
- FCC KDB 447498 D01 v05
- FCC KDB 616217 D04 v01
- FCC KDB 248227 D01 v01r02

3.4 Device Category and SAR Limits

This device belongs to portable device category because its radiating structure is allowed to be used within 20 centimeters of the body of the user. Limit for General Population/Uncontrolled exposure should be applied for this device, it is 1.6 W/kg as averaged over any 1 gram of tissue.

3.5 Test Conditions

Ambient Condition

Ambient Temperature	20 to 24 °C
Humidity	< 60 %

Test Configuration

During WLAN SAR testing EUT is configured with the WLAN continuous TX tool, and the transmission duty factor was monitored on the spectrum analyzer with zero-span setting

Duty factor observed as below:

802.11b, 1Mbps: 100%

802.11a, 6Mbps: 100%

802.11n HT20, MCS8: 100%

802.11n HT40, MCS8: 100%

For WLAN SAR testing, WLAN engineering testing software installed on the EUT can provide continuous transmitting RF signal.

4. Specific Absorption Rate (SAR)

4.1 Introduction

SAR is related to the rate at which energy is absorbed per unit mass in an object exposed to a radio field. The SAR distribution in a biological body is complicated and is usually carried out by experimental techniques or numerical modeling. The standard recommends limits for two tiers of groups, occupational/controlled and general population/uncontrolled, based on a person's awareness and ability to exercise control over his or her exposure. In general, occupational/controlled exposure limits are higher than the limits for general population/uncontrolled.

4.2 SAR Definition

The SAR definition is the time derivative (rate) of the incremental energy (dW) absorbed by (dissipated in) an incremental mass (dm) contained in a volume element (dv) of a given density (ρ). The equation description is as below:

$$\text{SAR} = \frac{d}{dt} \left(\frac{dW}{dm} \right) = \frac{d}{dt} \left(\frac{dW}{\rho dv} \right)$$

SAR is expressed in units of Watts per kilogram (W/kg)

SAR measurement can be either related to the temperature elevation in tissue by

$$\text{SAR} = C \left(\frac{\delta T}{\delta t} \right)$$

Where: C is the specific heat capacity, δT is the temperature rise and δt is the exposure duration, or related to the electrical field in the tissue by

$$\text{SAR} = \frac{\sigma |E|^2}{\rho}$$

Where: σ is the conductivity of the tissue, ρ is the mass density of the tissue and E is the RMS electrical field strength.

However for evaluating SAR of low power transmitter, electrical field measurement is typically applied.

5. SAR Measurement System

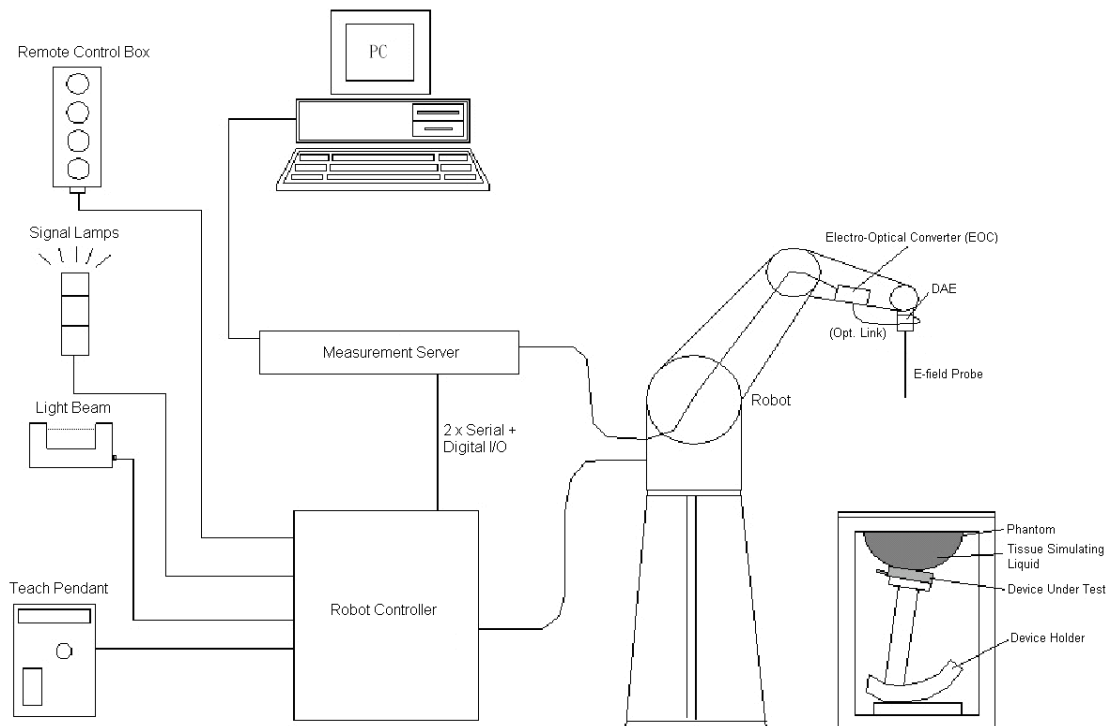


Fig 5.1 SPEAG DASY System Configurations

The DASY system for performance compliance tests is illustrated above graphically. This system consists of the following items:

- A standard high precision 6-axis robot with controller, a teach pendant and software
- A data acquisition electronic (DAE) attached to the robot arm extension
- A dosimetric probe equipped with an optical surface detector system
- The electro-optical converter (EOC) performs the conversion between optical and electrical signals
- A measurement server performs the time critical tasks such as signal filtering, control of the robot operation and fast movement interrupts.
- A probe alignment unit which improves the accuracy of the probe positioning
- A computer operating Windows XP
- DASY software
- Remote control with teach pendant and additional circuitry for robot safety such as warning lamps, etc.
- The SAM twin phantom
- A device holder
- Tissue simulating liquid
- Dipole for evaluating the proper functioning of the system

Component details are described in in the following sub-sections.

5.1 E-Field Probe

The SAR measurement is conducted with the dosimetric probe (manufactured by SPEAG). The probe is specially designed and calibrated for use in liquid with high permittivity. The dosimetric probe has special calibration in liquid at different frequency. This probe has a built in optical surface detection system to prevent from collision with phantom.

5.1.1 E-Field Probe Specification

<EX3DV4 Probe>

Construction	Symmetrical design with triangular core Built-in shielding against static charges PEEK enclosure material (resistant to organic solvents, e.g., DGBE)
Frequency	10 MHz to 6 GHz; Linearity: ± 0.2 dB
Directivity	± 0.3 dB in HSL (rotation around probe axis) ± 0.5 dB in tissue material (rotation normal to probe axis)
Dynamic Range	10 μ W/g to 100 mW/g; Linearity: ± 0.2 dB (noise: typically $< 1 \mu$ W/g)
Dimensions	Overall length: 330 mm (Tip: 20 mm) Tip diameter: 2.5 mm (Body: 12 mm) Typical distance from probe tip to dipole centers: 1 mm

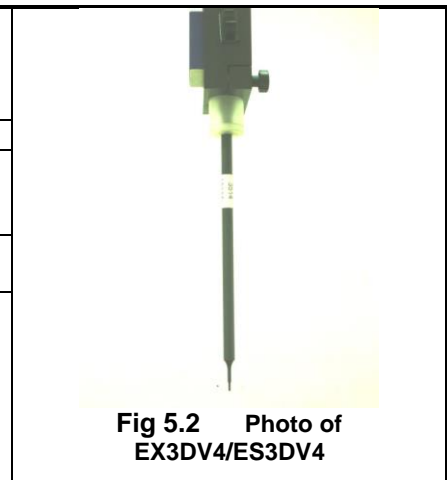


Fig 5.2 Photo of EX3DV4/ES3DV4

5.1.2 E-Field Probe Calibration

Each probe needs to be calibrated according to a dosimetric assessment procedure with accuracy better than $\pm 10\%$. The spherical isotropy shall be evaluated and within ± 0.25 dB. The sensitivity parameters (NormX, NormY, and NormZ), the diode compression parameter (DCP) and the conversion factor (ConvF) of the probe are tested. The calibration data can be referred to appendix C of this report.

5.2 Data Acquisition Electronics (DAE)

The data acquisition electronics (DAE) consists of a highly sensitive electrometer-grade preamplifier with auto-zeroing, a channel and gain-switching multiplexer, a fast 16 bit AD-converter and a command decoder and control logic unit. Transmission to the measurement server is accomplished through an optical downlink for data and status information as well as an optical uplink for commands and the clock. The input impedance of the DAE is 200 MOhm; the inputs are symmetrical and floating. Common mode rejection is above 80 dB.



Fig 5.3 Photo of DAE

5.3 Robot

The SPEAG DASY system uses the high precision robots (DASY4: RX90BL; DASY5: TX90XL) type from Stäubli SA (France). For the 6-axis controller system, the robot controller version (DASY4: CS7MB; DASY5: CS8c) from Stäubli is used. The Stäubli robot series have many features that are important for our application:

- High precision (repeatability ± 0.035 mm)
- High reliability (industrial design)
- Jerk-free straight movements
- Low ELF interference (the closed metallic construction shields against motor control fields)



Fig 5.4 Photo of DASY4



Fig 5.5 Photo of DASY5

5.4 Measurement Server

The measurement server is based on a PC/104 CPU board with CPU (DASY4: 166 MHz, Intel Pentium; DASY5: 400 MHz, Intel Celeron), chipdisk (DASY4: 32 MB; DASY5: 128 MB), RAM (DASY4: 64 MB, DASY5: 128 MB). The necessary circuits for communication with the DAE electronic box, as well as the 16 bit AD converter system for optical detection and digital I/O interface are contained on the DASY I/O board, which is directly connected to the PC/104 bus of the CPU board.

The measurement server performs all the real-time data evaluation for field measurements and surface detection, controls robot movements and handles safety operations.



Fig 5.6 Photo of Server for DASY4



Fig 5.7 Photo of Server for DASY5

5.5 Phantom

<SAM Twin Phantom>

Shell Thickness	2 ± 0.2 mm; Center ear point: 6 ± 0.2 mm
Filling Volume	Approx. 25 liters
Dimensions	Length: 1000 mm; Width: 500 mm; Height: adjustable feet
Measurement Areas	Left Hand, Right Hand, Flat Phantom



Fig 5.8 Photo of SAM Phantom

The bottom plate contains three pair of bolts for locking the device holder. The device holder positions are adjusted to the standard measurement positions in the three sections. A white cover is provided to tap the phantom during off-periods to prevent water evaporation and changes in the liquid parameters. On the phantom top, three reference markers are provided to identify the phantom position with respect to the robot.

<ELI4 Phantom>


Shell Thickness	2 ± 0.2 mm (sagging: <1%)	
Filling Volume	Approx. 30 liters	
Dimensions	Major ellipse axis: 600 mm Minor axis: 400 mm	

Fig 5.9 Photo of ELI4 Phantom

The ELI4 phantom is intended for compliance testing of handheld and body-mounted wireless devices in the frequency range of 30 MHz to 6 GHz. ELI4 is fully compatible with standard and all known tissue simulating liquids.

5.6 Device Holder

<Device Holder for SAM Twin Phantom>

The SAR in the phantom is approximately inversely proportional to the square of the distance between the source and the liquid surface. For a source at 5 mm distance, a positioning uncertainty of ± 0.5 mm would produce a SAR uncertainty of ± 20 %. Accurate device positioning is therefore crucial for accurate and repeatable measurements. The positions in which the devices must be measured are defined by the standards.

The DASY device holder is designed to cope with different positions given in the standard. It has two scales for the device rotation (with respect to the body axis) and the device inclination (with respect to the line between the ear reference points). The rotation center for both scales is the ear reference point (ERP). Thus the device needs no repositioning when changing the angles.

The DASY device holder is constructed of low-loss POM material having the following dielectric parameters: relative permittivity $\epsilon = 3$ and loss tangent $\delta = 0.02$. The amount of dielectric material has been reduced in the closest vicinity of the device, since measurements have suggested that the influence of the clamp on the test results could thus be lowered.



Fig 5.10 Device Holder

<Laptop Extension Kit>

The extension is lightweight and made of POM, acrylic glass and foam. It fits easily on the upper part of the mounting device in place of the phone positioned. The extension is fully compatible with the SAM Twin and ELI phantoms.

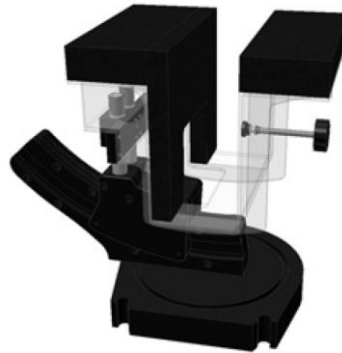


Fig 5.11 Laptop Extension Kit

5.7 Data Storage and Evaluation

5.7.1 Data Storage

The DASY software stores the assessed data from the data acquisition electronics as raw data (in microvolt readings from the probe sensors), together with all the necessary software parameters for the data evaluation (probe calibration data, liquid parameters and device frequency and modulation data) in measurement files. The post-processing software evaluates the desired unit and format for output each time the data is visualized or exported. This allows verification of the complete software setup even after the measurement and allows correction of erroneous parameter settings. For example, if a measurement has been performed with an incorrect crest factor parameter in the device setup, the parameter can be corrected afterwards and the data can be reevaluated.

The measured data can be visualized or exported in different units or formats, depending on the selected probe type (e.g., [V/m], [A/m], [mW/g]). Some of these units are not available in certain situations or give meaningless results, e.g., a SAR-output in a non-lose media, will always be zero. Raw data can also be exported to perform the evaluation with other software packages.

5.7.2 Data Evaluation

The DASY post-processing software (SEMCAD) automatically executes the following procedures to calculate the field units from the microvolt readings at the probe connector. The parameters used in the evaluation are stored in the configuration modules of the software :

Probe parameters :	- Sensitivity	Norm _i , a _{i0} , a _{i1} , a _{i2}
	- Conversion factor	ConvF _i
	- Diode compression point	dcp _i
Device parameters :	- Frequency	f
	- Crest factor	cf
Media parameters :	- Conductivity	σ
	- Density	ρ

These parameters must be set correctly in the software. They can be found in the component documents or they can be imported into the software from the configuration files issued for the DASY components. In the direct measuring mode of the multi-meter option, the parameters of the actual system setup are used. In the scan visualization and export modes, the parameters stored in the corresponding document files are used.

The first step of the evaluation is a linearization of the filtered input signal to account for the compression characteristics of the detector diode. The compensation depends on the input signal, the diode type and the DC-transmission factor from the diode to the evaluation electronics. If the exciting field is pulsed, the crest factor of the signal must be known to correctly compensate for peak power.

The formula for each channel can be given as :

$$V_i = U_i + U_i^2 \cdot \frac{cf}{dcp_i}$$

with V_i = compensated signal of channel i, (i = x, y, z)
 U_i = input signal of channel i, (i = x, y, z)
 cf = crest factor of exciting field (DASY parameter)
 dcp_i = diode compression point (DASY parameter)

From the compensated input signals, the primary field data for each channel can be evaluated :

$$\text{E-field Probes : } E_i = \sqrt{\frac{V_i}{\text{Norm}_i \cdot \text{ConvF}}}$$

$$\text{H-field Probes : } H_i = \sqrt{V_i \cdot \frac{a_{i0} + a_{i1}f + a_{i2}f^2}{f}}$$

with V_i = compensated signal of channel i, (i = x, y, z)
 Norm_i = sensor sensitivity of channel i, (i = x, y, z), $\mu\text{V}/(\text{V/m})^2$ for E-field Probes
 ConvF = sensitivity enhancement in solution
 a_{ij} = sensor sensitivity factors for H-field probes
 f = carrier frequency [GHz]
 E_i = electric field strength of channel i in V/m
 H_i = magnetic field strength of channel i in A/m

The RSS value of the field components gives the total field strength (Hermitian magnitude) :

$$E_{\text{tot}} = \sqrt{E_x^2 + E_y^2 + E_z^2}$$

The primary field data are used to calculate the derived field units.

$$\text{SAR} = E_{\text{tot}}^2 \cdot \frac{\sigma}{\rho \cdot 1000}$$

with SAR = local specific absorption rate in mW/g
 E_{tot} = total field strength in V/m
 σ = conductivity in [mho/m] or [Siemens/m]
 ρ = equivalent tissue density in g/cm^3

Note that the density is set to 1, to account for actual head tissue density rather than the density of the tissue simulating liquid.



5.8 Test Equipment List

Manufacturer	Name of Equipment	Type/Model	Serial Number	Calibration	
				Last Cal.	Due Date
SPEAG	2450MHz System Validation Kit	D2450V2	736	Jul. 25, 2011	Jul. 24, 2013
SPEAG	5GHz System Validation Kit	D5GHzV2	1006	Dec. 11, 2012	Dec. 10, 2013
SPEAG	Data Acquisition Electronics	DAE4	1338	Jun. 12, 2012	Jun. 11, 2013
SPEAG	Dosimetric E-Field Probe	EX3DV4	3792	Jun. 21, 2012	Jun. 20, 2013
Wisewind	Thermometer	ETP-101	TM685	Nov. 13, 2012	Nov. 12, 2013
SPEAG	ELI4 Phantom	QD 0VA 001 BA	1029	NCR	NCR
Agilent	ENA Network Analyzer	E5071C	MY46316648	Feb. 07, 2013	Feb. 06, 2014
Agilent	ESG Vector Series Signal Generator	E4438C	MY49070755	Oct. 02, 2012	Oct. 01, 2013
Anritsu	Power Meter	ML2495A	1132003	Aug. 14, 2012	Aug. 13, 2013
Agilent	Dual Directional Coupler	778D	50422	Note 4	
Woken	Attenuator 1	WK0602-XX	N/A	Note 4	
PE	Attenuator 2	PE7005-10	N/A	Note 4	
PE	Attenuator 3	PE7005- 3	N/A	Note 4	
Agilent	Dielectric Probe Kit	85070D	US01440205	Note 5	
AR	Power Amplifier	5S1G4M2	328767	Note 6	
R&S	Spectrum Analyzer	FSP	101131	Jul. 23, 2012	Jul. 22, 2013

Table 5.1 Test Equipment List

Note:

1. The calibration certificate of DASY can be referred to appendix C of this report.
2. Referring to KDB 865664 D01v01, the dipole calibration interval can be extended to 3 years with justification. The dipoles are also not physically damaged, or repaired during the interval.
3. The justification data of dipole D2450V2, SN: 736, can be found in appendix C. The return loss is < -20dB, within 20% of prior calibration, the impedance is within 5 ohm of prior calibration.
4. The Insertion Loss calibration of Dual Directional Coupler and Attenuator were characterized via the network analyzer and compensated during system check.
5. The dielectric probe kit was calibrated via the network analyzer, with the specified procedure (calibrated in pure water) and calibration kit (standard) short circuit, before the dielectric measurement. The specific procedure and calibration kit are provided by Agilent.
6. In system check we need to monitor the level on the power meter, and adjust the power amplifier level to have precise power level to the dipole; the measured SAR will be normalized to 1W input power according to the ratio of 1W to the input power to the dipole. For system check, the calibration of the power amplifier is deemed not critically required for correct measurement; the power meter is critical and we do have calibration for it
7. Attenuator 1 insertion loss is calibrated by the network Analyzer, which the calibration is valid, before system check.

6. Tissue Simulating Liquids

For the measurement of the field distribution inside the SAM phantom with DASY, the phantom must be filled with around 25 liters of homogeneous body tissue simulating liquid. For head SAR testing, the liquid height from the ear reference point (ERP) of the phantom to the liquid top surface is larger than 15 cm, which is shown in Fig. 6.1. For body SAR testing, the liquid height from the center of the flat phantom to the liquid top surface is larger than 15 cm, which is shown in Fig. 6.2.

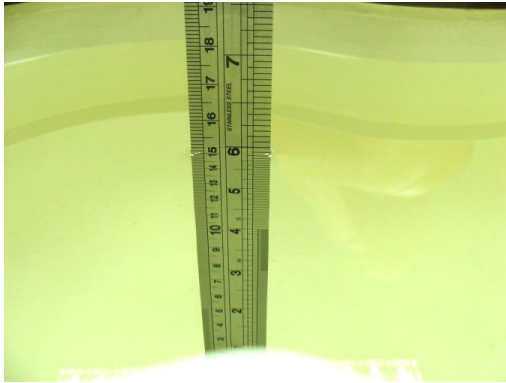


Fig 6.1 Photo of Liquid Height for Head SAR



Fig 6.2 Photo of Liquid Height for Body SAR

The following table gives the recipes for tissue simulating liquid.

Frequency (MHz)	Water (%)	Sugar (%)	Cellulose (%)	Salt (%)	Preventol (%)	DGBE (%)	Conductivity (σ)	Permittivity (ϵ_r)
For Head								
750	41.1	57.0	0.2	1.4	0.2	0	0.89	41.9
835	40.3	57.9	0.2	1.4	0.2	0	0.90	41.5
900	40.3	57.9	0.2	1.4	0.2	0	0.97	41.5
1800, 1900, 2000	55.2	0	0	0.3	0	44.5	1.40	40.0
2450	55.0	0	0	0	0	45.0	1.80	39.2
For Body								
750	51.7	47.2	0	0.9	0.1	0	0.96	55.5
835	50.8	48.2	0	0.9	0.1	0	0.97	55.2
900	50.8	48.2	0	0.9	0.1	0	1.05	55.0
1800, 1900, 2000	70.2	0	0	0.4	0	29.4	1.52	53.3
2450	68.6	0	0	0	0	31.4	1.95	52.7

Table 6.1 Recipes of Tissue Simulating Liquid

Simulating Liquid for 5G, Manufactured by SPEAG

Ingredients	(% by weight)
Water	64~78%
Mineral oil	11~18%
Emulsifiers	9~15%
Additives and Salt	2~3%



The dielectric parameters of the liquids were verified prior to the SAR evaluation using an Agilent 85070D Dielectric Probe Kit and an Agilent Network Analyzer.

The following table shows the measuring results for simulating liquid.

Frequency (MHz)	Liquid Type	Liquid Temp. (°C)	Conductivity (σ)	Permittivity (ϵ_r)	Conductivity Target (σ)	Permittivity Target (ϵ_r)	Delta (σ) (%)	Delta (ϵ_r) (%)	Limit (%)	Date
2450	Body	21.4	2.02	53.936	1.95	52.7	3.59	2.35	±5	Mar. 18, 2013
5200	Body	21.5	5.131	47.488	5.30	49.0	-3.19	-3.09	±5	Mar. 15, 2013
5300	Body	21.5	5.264	47.249	5.39	48.9	-2.34	-3.38	±5	Mar. 15, 2013
5600	Body	21.2	5.653	46.801	5.8	48.5	-2.53	-3.50	±5	Mar. 16, 2013
5800	Body	21.2	6.144	46.492	6	48.2	2.40	-3.54	±5	Mar. 17, 2013

Table 6.2 Measuring Results for Simulating Liquid

7. SAR System Verification

Each DASY system is equipped with one or more system validation kits. These units, together with the predefined measurement procedures within the DASY software, enable the user to conduct the system performance check and system validation. System validation kit includes a dipole, tripod holder to fix it underneath the flat phantom and a corresponding distance holder.

7.1 Purpose of System Performance check

The system performance check verifies that the system operates within its specifications. System and operator errors can be detected and corrected. It is recommended that the system performance check be performed prior to any usage of the system in order to guarantee reproducible results. The system performance check uses normal SAR measurements in a simplified setup with a well characterized source. This setup was selected to give a high sensitivity to all parameters that might fail or vary over time. The system check does not intend to replace the calibration of the components, but indicates situations where the system uncertainty is exceeded due to drift or failure.

7.2 System Setup

In the simplified setup for system evaluation, the EUT is replaced by a calibrated dipole and the power source is replaced by a continuous wave that comes from a signal generator. The calibrated dipole must be placed beneath the flat phantom section of the SAM twin phantom with the correct distance holder. The distance holder should touch the phantom surface with a light pressure at the reference marking and be oriented parallel to the long side of the phantom. The equipment setup is shown below:

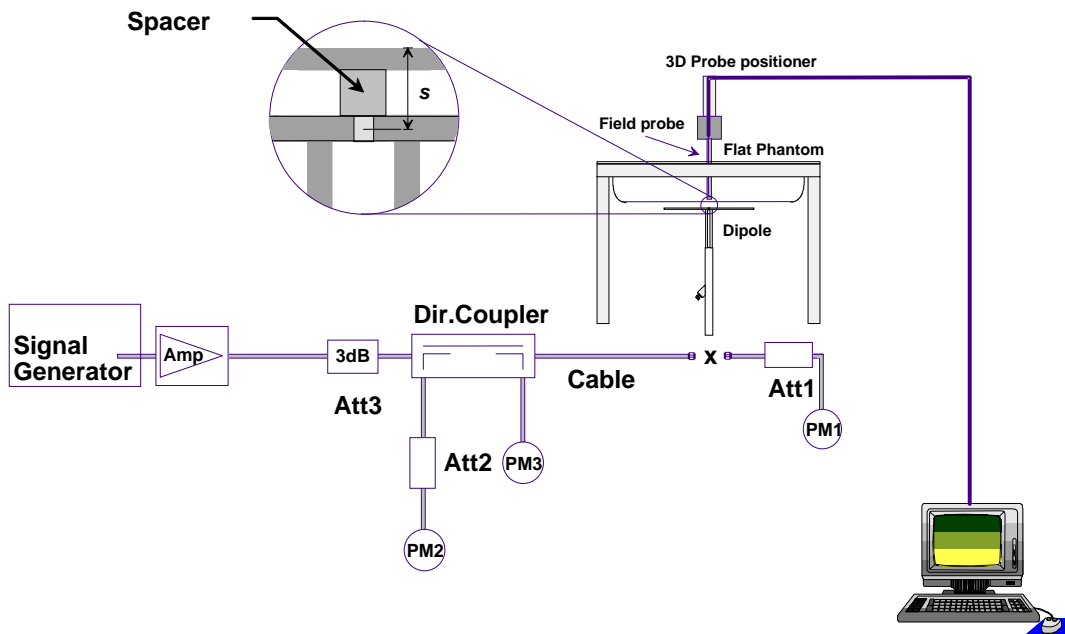


Fig 7.1 System Setup for System Evaluation

1. Signal Generator
2. Amplifier
3. Directional Coupler
4. Power Meter
5. Calibrated Dipole



Fig 7.2 Photo of Dipole Setup

7.3 SAR System Verification Results

Comparing to the original SAR value provided by SPEAG, the verification data should be within its specification of 10 %. Table 7.1 shows the target SAR and measured SAR after normalized to 1W input power. The table below indicates the system performance check can meet the variation criterion and the plots can be referred to Appendix A of this report.

Date	Frequency (MHz)	Liquid Type	Power fed onto reference dipole (mW)	Targeted SAR (W/kg)	Measured SAR (W/kg)	Normalized SAR (W/kg)	Deviation (%)
Mar. 18, 2013	2450	Body	250	52.3	13.3	53.2	1.72
Mar. 15, 2013	5200	Body	100	71.40	6.74	67.4	-5.60
Mar. 15, 2013	5300	Body	100	73.50	7.52	75.2	2.31
Mar. 16, 2013	5600	Body	100	76.80	7.72	77.2	0.52
Mar. 17, 2013	5800	Body	100	71.70	7.14	71.4	-0.42

Table 7.1 Target and Measurement SAR after Normalized

8. EUT Testing Position

This EUT was tested in four positions. They are bottom-face, Edge1, Edge2 and Edge4 of tablet PC. In these positions, the surface of EUT is touching with phantom 0 cm. Please refer to Appendix D for the test setup photos.

9. Measurement Procedures

The measurement procedures are as follows:

<Conducted power measurement>

- (a) For WWAN power measurement, use base station simulator to configure EUT WWAN transmission in conducted connection with RF cable, at maximum power in each supported wireless interface and frequency band.
- (b) Read the WWAN RF power level from the base station simulator.
- (c) For WLAN/BT power measurement, use engineering software to configure EUT WLAN/BT continuously transmission, at maximum RF power in each supported wireless interface and frequency band
- (d) Connect EUT RF port through RF cable to the power meter, and measure WLAN/BT output power

<SAR measurement>

- (a) Use base station simulator to configure EUT WWAN transmission in radiated connection, and engineering software to configure EUT WLAN/BT continuously transmission, at maximum RF power, in the highest power channel.
- (b) Place the EUT in the positions as Appendix D demonstrates.
- (c) Set scan area, grid size and other setting on the DASY software.
- (d) Measure SAR results for the highest power channel on each testing position.
- (e) Find out the largest SAR result on these testing positions of each band
- (f) Measure SAR results for other channels in worst SAR testing position if the reported SAR of highest power channel is larger than 0.8 W/kg

According to the test standard, the recommended procedure for assessing the peak spatial-average SAR value consists of the following steps:

- (a) Power reference measurement
- (b) Area scan
- (c) Zoom scan
- (d) Power drift measurement

9.1 Spatial Peak SAR Evaluation

The procedure for spatial peak SAR evaluation has been implemented according to the test standard. It can be conducted for 1g and 10g, as well as for user-specific masses. The DASY software includes all numerical procedures necessary to evaluate the spatial peak SAR value.

The base for the evaluation is a "cube" measurement. The measured volume must include the 1g and 10g cubes with the highest averaged SAR values. For that purpose, the center of the measured volume is aligned to the interpolated peak SAR value of a previously performed area scan.

The entire evaluation of the spatial peak values is performed within the post-processing engine (SEMCAD). The system always gives the maximum values for the 1g and 10g cubes. The algorithm to find the cube with highest averaged SAR is divided into the following stages:

- (a) Extraction of the measured data (grid and values) from the Zoom Scan
- (b) Calculation of the SAR value at every measurement point based on all stored data (A/D values and measurement parameters)
- (c) Generation of a high-resolution mesh within the measured volume
- (d) Interpolation of all measured values from the measurement grid to the high-resolution grid
- (e) Extrapolation of the entire 3-D field distribution to the phantom surface over the distance from sensor to surface
- (f) Calculation of the averaged SAR within masses of 1g and 10g

9.2 Area & Zoom Scan Procedures

First Area Scan is used to locate the approximate location(s) of the local peak SAR value(s). The measurement grid within an Area Scan is defined by the grid extent, grid step size and grid offset. Next, in order to determine the EM field distribution in a three-dimensional spatial extension, Zoom Scan is required. The Zoom Scan is performed around the highest E-field value to determine the averaged SAR-distribution over 10 g. Area scan and zoom scan resolution setting follows KDB 865664 D01v01 quoted below.

For any secondary peaks found in the area scan which are within 2 dB of the maximum peak and are not within this zoom scan, the zoom scan should be repeated

		≤ 3 GHz	> 3 GHz
Maximum distance from closest measurement point (geometric center of probe sensors) to phantom surface		5 ± 1 mm	$\frac{1}{2} \cdot \delta \cdot \ln(2) \pm 0.5$ mm
Maximum probe angle from probe axis to phantom surface normal at the measurement location		$30^\circ \pm 1^\circ$	$20^\circ \pm 1^\circ$
Maximum area scan spatial resolution: $\Delta x_{Area}, \Delta y_{Area}$		≤ 2 GHz: ≤ 15 mm 2 – 3 GHz: ≤ 12 mm	3 – 4 GHz: ≤ 12 mm 4 – 6 GHz: ≤ 10 mm
		When the x or y dimension of the test device, in the measurement plane orientation, is smaller than the above, the measurement resolution must be \leq the corresponding x or y dimension of the test device with at least one measurement point on the test device.	
Maximum zoom scan spatial resolution: $\Delta x_{Zoom}, \Delta y_{Zoom}$		≤ 2 GHz: ≤ 8 mm 2 – 3 GHz: ≤ 5 mm*	3 – 4 GHz: ≤ 5 mm* 4 – 6 GHz: ≤ 4 mm*
Maximum zoom scan spatial resolution, normal to phantom surface	uniform grid: $\Delta z_{Zoom}(n)$	≤ 5 mm	3 – 4 GHz: ≤ 4 mm 4 – 5 GHz: ≤ 3 mm 5 – 6 GHz: ≤ 2 mm
	graded grid $\Delta z_{Zoom}(1)$: between 1 st two points closest to phantom surface	≤ 4 mm	3 – 4 GHz: ≤ 3 mm 4 – 5 GHz: ≤ 2.5 mm 5 – 6 GHz: ≤ 2 mm
	$\Delta z_{Zoom}(n>1)$: between subsequent points	$\leq 1.5 \cdot \Delta z_{Zoom}(n-1)$	
Minimum zoom scan volume	x, y, z	≥ 30 mm	3 – 4 GHz: ≥ 28 mm 4 – 5 GHz: ≥ 25 mm 5 – 6 GHz: ≥ 22 mm
<p>Note: δ is the penetration depth of a plane-wave at normal incidence to the tissue medium; see draft standard IEEE P1528-2011 for details.</p> <p>* When zoom scan is required and the <i>reported</i> SAR from the area scan based <i>1-g SAR estimation</i> procedures of KDB 447498 is ≤ 1.4 W/kg, ≤ 8 mm, ≤ 7 mm and ≤ 5 mm zoom scan resolution may be applied, respectively, for 2 GHz to 3 GHz, 3 GHz to 4 GHz and 4 GHz to 6 GHz.</p>			



9.3 Volume Scan Procedures

The volume scan is used for assess overlapping SAR distributions for antennas transmitting in different frequency bands. It is equivalent to an oversized zoom scan used in standalone measurements. The measurement volume will be used to enclose all the simultaneous transmitting antennas. For antennas transmitting simultaneously in different frequency bands, the volume scan is measured separately in each frequency band. In order to sum correctly to compute the 1g aggregate SAR, the EUT remain in the same test position for all measurements and all volume scan use the same spatial resolution and grid spacing. When all volume scan were completed, the software, SEMCAD postprocessor can combine and subsequently superpose these measurement data to calculating the multiband SAR.

9.4 SAR Averaged Methods

In DASy, the interpolation and extrapolation are both based on the modified Quadratic Shepard's method. The interpolation scheme combines a least-square fitted function method and a weighted average method which are the two basic types of computational interpolation and approximation.

Extrapolation routines are used to obtain SAR values between the lowest measurement points and the inner phantom surface. The extrapolation distance is determined by the surface detection distance and the probe sensor offset. The uncertainty increases with the extrapolation distance. To keep the uncertainty within 1% for the 1 g and 10 g cubes, the extrapolation distance should not be larger than 5 mm.

9.5 Power Drift Monitoring

All SAR testing is under the EUT install full charged battery and transmit maximum output power. In DASy measurement software, the power reference measurement and power drift measurement procedures are used for monitoring the power drift of EUT during SAR test. Both these procedures measure the field at a specified reference position before and after the SAR testing. The software will calculate the field difference in dB. If the power drifts more than 5%, the SAR will be retested.



10. Conducted RF Output Power (Unit: dBm)

<WLAN 2.4GHz Conducted Power>

<SISO mode Antenna 0 Conducted Power>

WLAN 2.4GHz 802.11b Average Power (dBm)						
Power vs. Channel			Power vs. Data Rate			
Channel	Freq.	Data Rate	Channel	Data Rate (bps)		
	(MHz)	1Mbps		2Mbps	5.5Mbps	11Mbps
CH 1	2412	16.58	CH 6	16.87	16.86	16.87
CH 6	2437	16.88				
CH 11	2462	16.74				

WLAN 2.4GHz 802.11g Average Power (dBm)										
Power vs. Channel			Power vs. Data Rate							
Channel	Frequency	Data Rate	Channel	Data Rate						
	(MHz)	6Mbps		9Mbps	12Mbps	18Mbps	24Mbps	36Mbps	48Mbps	54Mbps
CH 1	2412	12.85	CH 6	15.54	15.51	15.50	15.48	15.46	15.49	15.50
CH 6	2437	15.56								
CH 11	2462	12.93								

WLAN 2.4GHz 802.11n-HT20 Average Power (dBm)										
Power vs. Channel			Power vs. Data Rate							
Channel	Frequency	MCS Index	Channel	MCS Index						
	(MHz)	MCS0		MCS1	MCS2	MCS3	MCS4	MCS5	MCS6	MCS7
CH 1	2412	11.86	CH 6	15.25	15.29	15.27	15.23	15.29	15.30	15.24
CH 6	2437	15.31								
CH 11	2462	11.52								

WLAN 2.4GHz 802.11n-HT40 Average Power (dBm)										
Power vs. Channel			Power vs. Data Rate							
Channel	Frequency	MCS Index	Channel	MCS Index						
	(MHz)	MCS0		MCS1	MCS2	MCS3	MCS4	MCS5	MCS6	MCS7
CH 3	2422	9.15	CH 6	12.25	12.26	12.15	12.24	12.23	12.22	12.23
CH 6	2437	12.27								
CH 9	2452	8.60								

Note:

1. Per KDB 248227 D01 v01r02, choose the highest output power channel to test SAR and determine further SAR exclusion
2. For each frequency band, testing at higher data rates and higher order modulations is not required when the maximum average output power for each of these configurations is less than 0.25dB higher than those measured at the lowest data rate.
3. Per KDB 248227 D01 v01r02, 11g, 11n-HT20 and 11n-HT40 output power is less than 1/4dB higher than 11b mode, thus the SAR can be excluded.



<SISO mode Antenna 1 Conducted Power>

WLAN 2.4GHz 802.11b Average Power (dBm)						
Power vs. Channel			Power vs. Data Rate			
Channel	Freq.	Data Rate	Channel	Data Rate		
	(MHz)	1Mbps		2Mbps	5.5Mbps	11Mbps
CH 1	2412	15.56	CH 1	15.55	15.54	15.53
CH 6	2437	13.96				
CH 11	2462	14.96				

WLAN 2.4GHz 802.11g Average Power (dBm)										
Power vs. Channel			Power vs. Data Rate							
Channel	Frequency	Data Rate	Channel	Data Rate						
	(MHz)	6Mbps		9Mbps	12Mbps	18Mbps	24Mbps	36Mbps	48Mbps	54Mbps
CH 1	2412	12.05	CH 6	15.18	15.10	15.18	14.99	14.97	14.93	14.96
CH 6	2437	15.19								
CH 11	2462	11.66								

WLAN 2.4GHz 802.11n-HT20 Average Power (dBm)										
Power vs. Channel			Power vs. Data Rate							
Channel	Frequency	MCS Index	Channel	MCS Index						
	(MHz)	MCS0		MCS1	MCS2	MCS3	MCS4	MCS5	MCS6	MCS7
CH 1	2412	10.42	CH 6	14.93	15.04	14.96	14.95	15.01	15.02	15.05
CH 6	2437	15.06								
CH 11	2462	10.67								

WLAN 2.4GHz 802.11n-HT40 Average Power (dBm)										
Power vs. Channel			Power vs. Data Rate							
Channel	Frequency	MCS Index	Channel	MCS Index						
	(MHz)	MCS0		MCS1	MCS2	MCS3	MCS4	MCS5	MCS6	MCS7
CH 3	2422	7.99	CH 6	11.35	11.33	11.28	11.26	11.28	11.34	11.32
CH 6	2437	11.36								
CH 9	2452	8.74								

Note:

- Per KDB 248227 D01 v01r02, choose the highest output power channel to test SAR and determine further SAR exclusion
- For each frequency band, testing at higher data rates and higher order modulations is not required when the maximum average output power for each of these configurations is less than 0.25dB higher than those measured at the lowest data rate.
- Per KDB 248227 D01 v01r02, 11g, 11n-HT20 and 11n-HT40 output power is less than 1/4dB higher than 11b mode, thus the SAR can be excluded.



<MIMO mode Antenna 0+1 Conducted Power>

WLAN 2.4GHz 802.11n-HT20 Average Power (dBm)										
Power vs. Channel			Power vs. Data Rate							
Channel	Frequency	MCS Index	Channel	MCS Index						
	(MHz)	MCS 8		MCS 9	MCS 10	MCS 11	MCS 12	MCS 13	MCS 14	MCS 15
CH 1	2412	14.26	CH 6	15.90	15.90	15.92	15.89	15.91	15.88	15.91
CH 6	2437	15.93								
CH 11	2462	13.42								

WLAN 2.4GHz 802.11n-HT40 Average Power (dBm)										
Power vs. Channel			Power vs. Data Rate							
Channel	Frequency	MCS Index	Channel	MCS Index						
	(MHz)	MCS0		MCS1	MCS2	MCS3	MCS4	MCS5	MCS6	MCS7
CH 3	2422	10.00	CH 6	15.25	15.23	15.21	15.18	15.24	15.19	15.24
CH 6	2437	15.26								
CH 9	2452	9.58								

Note:

1. Per KDB 248227 D01 v01r02, choose the highest output power channel to test SAR and determine further SAR exclusion
2. For each frequency band, testing at higher data rates and higher order modulations is not required when the maximum average output power for each of these configurations is less than 0.25dB higher than those measured at the lowest data rate.
3. Per KDB 248227 D01 v01r02, 11n-HT40 output power is less than 1/4dB higher than 11n-HT20 mode, thus the SAR can be excluded.

<Bluetooth Conducted Power>

Channel	Frequency (MHz)	Average power (dBm)		
		Mode		
		GFSK	$\pi/4$ -DQPSK	8-DPSK
CH 0	2402	5.31	0.97	0.99
CH 39	2441	5.35	1.35	1.36
CH 78	2480	5.55	1.97	1.98

Channel	Frequency (MHz)	Average power (dBm)
		Mode
		BT v4.0 LE, GFSK
CH 0	2402	3.19
CH 19	2440	3.80
CH 39	2480	3.38



<WLAN 5GHz Conducted Power>

<SISO mode Antenna 0 Conducted Power>

WLAN 5GHz 802.11a Average Power (dBm)										
Power vs. Channel			Power vs. Data Rate							
Channel	Frequency	Data Rate	Channel	Data Rate						
	(MHz)	6M		9Mbps	12Mbps	18Mbps	24Mbps	36Mbps	48Mbps	54Mbps
CH 36	5180	15.95	CH 44	15.93	15.92	15.97	15.99	15.97	16.05	16.07
CH 40	5200	16.03								
CH 44	5220	16.09								
CH 48	5240	15.62								
CH 52	5260	15.61	CH 64	16.37	16.36	16.33	16.30	16.38	16.38	16.36
CH 56	5280	16.27								
CH 60	5300	16.21								
CH 64	5320	16.39								
CH 100	5500	16.26								
CH 104	5520	16.38	CH 116	16.37	16.36	16.33	16.30	16.38	16.38	16.36
CH 108	5540	16.17								
CH 112	5560	16.24								
CH 116	5580	16.48								
CH 132	5660	16.28								
CH 136	5680	16.27								
CH 140	5700	16.45								
CH 149	5745	14.38	CH 149	14.37	14.35	14.36	14.37	14.36	14.35	14.37
CH 153	5765	14.14								
CH 157	5785	14.36								
CH 161	5805	13.77								
CH 165	5825	14.09								

WLAN 5GHz 802.11n-HT20 Average Power (dBm)										
Power vs. Channel			Power vs. Data Rate							
Channel	Frequency	MCS Index	Channel	MCS Index						
	(MHz)	MCS0		MCS1	MCS2	MCS3	MCS4	MCS5	MCS6	MCS7
CH 36	5180	15.74	CH 44	16.38	16.36	16.37	16.38	16.38	16.37	16.35
CH 40	5200	16.18								
CH 44	5220	16.40								
CH 48	5240	16.19								
CH 52	5260	16.08	CH 60	16.58	16.57	16.57	16.55	16.56	16.54	16.56
CH 56	5280	16.41								
CH 60	5300	16.59								
CH 64	5320	16.40								
CH 100	5500	16.37								
CH 104	5520	16.22	CH 100	16.27	16.35	16.32	16.34	16.35	16.36	16.32
CH 108	5540	16.06								
CH 112	5560	16.23								
CH 116	5580	16.21								
CH 132	5660	16.14								
CH 136	5680	15.92								
CH 140	5700	16.19								
CH 149	5745	14.68	CH 149	14.58	14.67	14.65	14.64	14.64	14.66	14.64
CH 153	5765	14.32								
CH 157	5785	14.28								
CH 161	5805	13.96								
CH 165	5825	14.26								



WLAN 5GHz 802.11n-HT40 Average Power (dBm)										
Power vs. Channel			Power vs. Data Rate							
Channel	Frequency	MCS Index	Channel	MCS Index						
	(MHz)	MCS0		MCS1	MCS2	MCS3	MCS4	MCS5	MCS6	MCS7
CH 38	5190	12.63	CH 46	16.32	16.29	16.18	16.27	16.31	16.32	16.30
CH 46	5230	16.33								
CH 54	5270	15.79								
CH 62	5310	11.47	CH 54	15.78	15.75	15.75	15.77	15.74	15.75	15.77
CH 102	5510	15.38								
CH 110	5550	16.49								
CH 134	5670	16.34	CH 110	16.48	16.45	16.43	16.47	16.46	16.45	16.47
CH 151	5755	18.46								
CH 159	5795	17.49								
CH 151	5755	18.46	CH 151	18.41	18.44	18.35	18.43	18.44	18.45	18.45
CH 159	5795	17.49								

Note:

1. Per KDB 248227 D01 v01r02, choose the highest output power channel to test SAR and determine further SAR exclusion
2. For each frequency band, testing at higher data rates and higher order modulations is not required when the maximum average output power for each of these configurations is less than 0.25dB higher than those measured at the lowest data rate.
3. Per KDB 248227 D01 v01r02, 11n-HT20 (Freq: 5180 MHz ~ 5240MHz) power is 1/4dB higher than 802.11a mode, 11n-HT20 SAR will be verified at the highest RF exposure position found in 802.11a SAR testing.
4. Per KDB 248227 D01 v01r02, 11n-HT20 and 11n-HT40 (Freq: 5745 MHz ~ 5825MHz) power is 1/4dB higher than 802.11a mode, 11n-HT20 and 11n-HT40 SAR will be verified at the highest RF exposure position found in 802.11a SAR testing.
5. Per KDB 248227 D01 v01r02, 11n-HT20 and 11n-HT40 (Freq: 5260 MHz ~ 5700MHz) output power is less than 1/4dB higher than 11a mode, thus the SAR can be excluded.



<SISO mode Antenna 1 Conducted Power>

WLAN 5GHz 802.11a Average Power (dBm)										
Power vs. Channel			Power vs. Data Rate							
Channel	Frequency	Data Rate	Channel	Data Rate						
	(MHz)	6Mbps		9Mbps	12Mbps	18Mbps	24Mbps	36Mbps	48Mbps	54Mbps
CH 36	5180	15.77	CH 36	15.75	15.67	15.73	15.64	15.67	15.75	15.76
CH 40	5200	15.74								
CH 44	5220	15.63								
CH 48	5240	15.47								
CH 52	5260	15.27	CH 64	15.83	15.77	15.81	15.80	15.78	15.81	15.83
CH 56	5280	15.79								
CH 60	5300	15.29								
CH 64	5320	15.84								
CH 100	5500	15.54								
CH 104	5520	15.51	CH 116	15.53	15.41	15.44	15.40	15.41	15.54	15.46
CH 108	5540	15.52								
CH 112	5560	15.57								
CH 116	5580	15.59								
CH 132	5660	15.42								
CH 136	5680	15.19								
CH 140	5700	15.48								
CH 149	5745	15.90	CH 149	15.88	15.81	15.78	15.88	15.89	15.85	15.87
CH 153	5765	15.51								
CH 157	5785	15.71								
CH 161	5805	15.57								
CH 165	5825	15.81								

WLAN 5GHz 802.11n-HT20 Average Power (dBm)										
Power vs. Channel			Power vs. Data Rate							
Channel	Frequency	MCS Index	Channel	MCS Index						
	(MHz)	MCS0		MCS1	MCS2	MCS3	MCS4	MCS5	MCS6	MCS7
CH 36	5180	15.96	CH 36	15.86	15.92	15.92	15.90	15.87	15.94	15.92
CH 40	5200	15.90								
CH 44	5220	15.86								
CH 48	5240	15.69								
CH 52	5260	15.21	CH 64	15.66	15.67	15.61	15.63	15.65	15.66	15.65
CH 56	5280	15.67								
CH 60	5300	15.11								
CH 64	5320	15.68								
CH 100	5500	15.51								
CH 104	5520	15.56	CH 116	15.58	15.52	15.51	15.51	15.59	15.61	15.53
CH 108	5540	15.38								
CH 112	5560	15.43								
CH 116	5580	15.62								
CH 132	5660	15.35								
CH 136	5680	14.99								
CH 140	5700	15.37								
CH 149	5745	15.72	CH 149	15.66	15.52	15.61	15.51	15.65	15.61	15.65
CH 153	5765	15.42								
CH 157	5785	15.54								
CH 161	5805	15.49								
CH 165	5825	15.66								



WLAN 5GHz 802.11n-HT40 Average Power (dBm)										
Power vs. Channel			Power vs. Data Rate							
Channel	Frequency	MCS Index	Channel	MCS Index						
	(MHz)	MCS0		MCS1	MCS2	MCS3	MCS4	MCS5	MCS6	MCS7
CH 38	5190	12.61	CH 46	15.65	15.65	15.64	15.62	15.64	15.63	15.65
CH 46	5230	15.66								
CH 54	5270	14.96	CH 54	14.95	14.94	14.93	14.94	14.93	14.88	14.85
CH 62	5310	12.04								
CH 102	5510	14.63	CH 110	15.60	15.62	15.63	15.62	15.63	15.61	15.61
CH 110	5550	15.64								
CH 134	5670	15.34								
CH 151	5755	19.92	CH 151	19.91	19.90	19.91	19.91	19.91	19.89	19.87
CH 159	5795	19.77								

Note:

1. Per KDB 248227 D01 v01r02, choose the highest output power channel to test SAR and determine further SAR exclusion
2. For each frequency band, testing at higher data rates and higher order modulations is not required when the maximum average output power for each of these configurations is less than 0.25dB higher than those measured at the lowest data rate.
3. Per KDB 248227 D01 v01r02, 11n-HT20 & 11n-HT40 (Freq: 5180 MHz ~ 5700MHz) output power is less than 1/4 dB higher than 802.11a mode, thus the SAR can be excluded
4. Per KDB 248227 D01 v01r02, 11n-HT40 (Freq: 5745 MHz ~ 5825MHz) power is 1/4dB higher than 802.11a mode, 11n-HT40 SAR will be verified at the highest RF exposure position found in 802.11a SAR testing.



<MIMO mode Antenna 0+1 Conducted Power>

WLAN 5GHz 802.11n-HT20 Average Power (dBm)										
Power vs. Channel			Power vs. Data Rate							
Channel	Frequency (MHz)	MCS Index MCS8	Channel	MCS Index						
				MCS9	MCS10	MCS11	MCS12	MCS13	MCS14	MCS15
CH 36	5180	16.23	CH 36	16.00	16.20	16.08	16.02	16.21	16.21	16.22
CH 40	5200	16.06								
CH 44	5220	16.18								
CH 48	5240	15.72								
CH 52	5260	15.41	CH 60	15.82	15.76	15.76	15.72	15.81	15.81	15.78
CH 56	5280	15.76								
CH 60	5300	15.83								
CH 64	5320	15.78								
CH 100	5500	15.97								
CH 104	5520	15.84	CH 100	15.93	15.95	15.91	15.92	15.95	15.95	15.96
CH 108	5540	15.62								
CH 112	5560	15.75								
CH 116	5580	15.87								
CH 132	5660	15.94								
CH 136	5680	15.31								
CH 140	5700	15.22								
CH 149	5745	16.33	CH 149	16.32	16.31	16.32	16.28	16.30	16.28	16.31
CH 153	5765	16.30								
CH 157	5785	16.07								
CH 161	5805	16.04								
CH 165	5825	16.32								

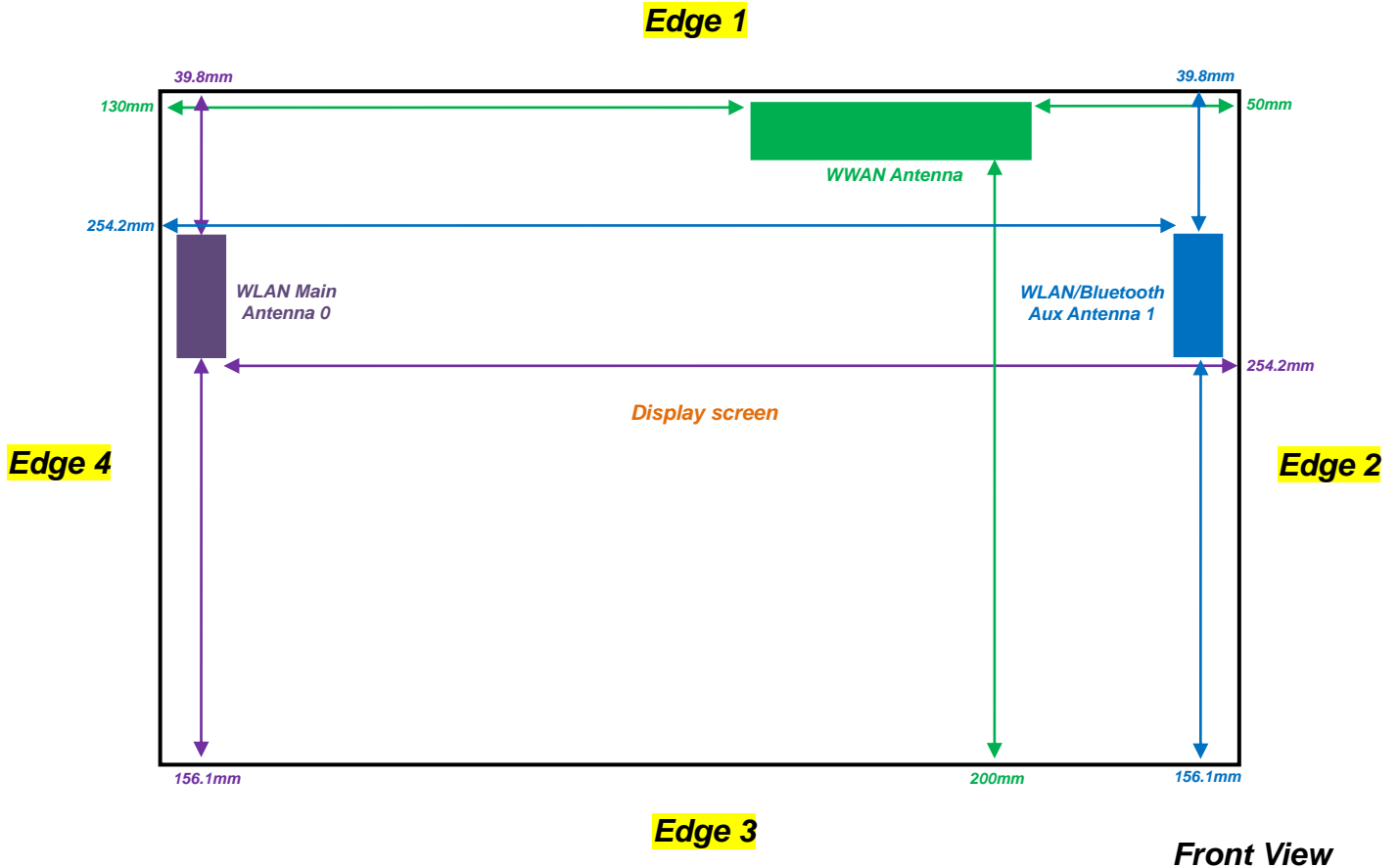
WLAN 5GHz 802.11n-HT40 Average Power (dBm)										
Power vs. Channel			Power vs. Data Rate							
Channel	Frequency (MHz)	MCS Index MCS8	Channel	MCS Index						
				MCS9	MCS10	MCS11	MCS12	MCS13	MCS14	MCS15
CH 38	5190	13.24	CH 46	16.16	16.23	16.22	16.23	16.20	16.23	16.17
CH 46	5230	16.24								
CH 54	5270	15.47	CH 54	15.43	15.42	15.46	15.46	15.46	15.45	15.46
CH 62	5310	15.04								
CH 102	5510	15.86	CH 110	16.05	16.09	16.09	16.08	16.08	16.08	16.09
CH 110	5550	16.10								
CH 134	5670	15.36								
CH 151	5755	16.16	CH 151	16.15	16.05	16.15	16.02	16.14	16.14	16.15
CH 159	5795	16.04								

Note:

1. Per KDB 248227 D01 v01r02, choose the highest output power channel to test SAR and determine further SAR exclusion
2. For each frequency band, testing at higher data rates and higher order modulations is not required when the maximum average output power for each of these configurations is less than 0.25dB higher than those measured at the lowest data rate.
3. Per KDB 248227 D01 v01r02, 11n-HT40 output power is less than 1/4dB higher than 11n-HT20 mode, thus the SAR can be excluded.

11. Exposure Positions Consideration

<Tablet PC>



Antennas	Wireless Interface
WLAN Main Antenna Ant 0(Tx/Rx)	WLAN 5GHz WLAN 2.4GHz
WLAN Aux Antenna Ant 1(Tx/Rx)	WLAN 5GHz WLAN 2.4GHz Bluetooth 2.4GHz

<Transmission configuration>

Wireless Interface	SISO Mode		MIMO Mode
	WLAN Antenna 0 (Tx / Rx)	WLAN Antenna 1 (Tx / Rx)	WLAN Antenna 0+1 (Tx / Rx)
2.4GHz Bluetooth		yes	
WLAN2.4GHz 802.11b/g	yes	yes	
WLAN2.4GHz 802.11 HT20/HT40	yes	yes	yes
WLAN5GHz 802.11a	yes	yes	
WLAN5GHz 802.11 HT20/HT40	yes	yes	yes



<WLAN/Bluetooth SAR test exclusion table>

Exposure Position	Wireless Interface	802.11b Ant 0	802.11b Ant 1	802.11n Ant 0+1	802.11a Ant 0	802.11a Ant 1	802.11n Ant 0+1	Bluetooth
Exposure Position	Tune-up Maximum power (dBm)	17	16	16	19	20.5	17	6
	Tune-up Maximum rated power (mW)	50.12	39.81	39.81	79.43	112.20	50.12	3.98
Bottom Face	Antenna to user (mm)	5	5	5	5	5	5	5
	SAR exclusion threshold (mW)	10	10	10	6	6	6	10
	SAR testing required?	YES	YES	YES	YES	YES	YES	NO
Edge 1	Antenna to user (mm)	39.8	39.8	39.8	39.8	39.8	39.8	39.8
	SAR exclusion threshold (mW)	76	76	76	49	49	49	76
	SAR testing required?	NO	NO	NO	YES	YES	YES	NO
Edge 2	Antenna to user (mm)	254.2	5	5	254.2	5	5	5
	SAR exclusion threshold (mW)	2138	10	10	2104	6	6	10
	SAR testing required?	NO	YES	YES	NO	YES	YES	NO
Edge 3	Antenna to user (mm)	156.1	156.1	156.1	156.1	156.1	156.1	156.1
	SAR exclusion threshold (mW)	1157	1157	1157	1123	1123	1123	297
	SAR testing required?	NO	NO	NO	NO	NO	NO	NO
Edge 4	Antenna to user (mm)	5	254.2	5	5	254.2	5	254.2
	SAR exclusion threshold (mW)	10	2138	10	6	2104	6	484
	SAR testing required?	YES	NO	YES	YES	NO	YES	NO

Note:

- Maximum power is the source-based time-average power and represents the maximum RF output power among production units
- Per KDB 447498 D01v05, for larger devices, the *test separation distance* is determined by the closest separation between the antenna and the user.
- Per KDB 447498 D01v05, standalone SAR test exclusion threshold is applied; If the distance of the antenna to the user is < 5mm, 5mm is used to determine SAR exclusion threshold
- Per KDB 447498 D01v05, the 1-g and 10-g SAR test exclusion thresholds for 100 MHz to 6 GHz at *test separation distances* ≤ 50 mm are determined by:

$$[(\text{max. power of channel, including tune-up tolerance, mW}) / (\text{min. test separation distance, mm})] \cdot [\sqrt{f(\text{GHz})}] \leq 3.0$$
 for 1-g SAR and ≤ 7.5 for 10-g extremity SAR
 - f(GHz) is the RF channel transmit frequency in GHz
 - Power and distance are rounded to the nearest mW and mm before calculation
 - The result is rounded to one decimal place for comparison
- Per KDB 447498 D01v05, at 100 MHz to 6 GHz and for *test separation distances* > 50 mm, the SAR test exclusion threshold is determined according to the following
 - [Threshold at 50 mm in step 1) + (test separation distance - 50 mm) · (f(MHz)/150)] mW, at 100 MHz to 1500 MHz
 - [Threshold at 50 mm in step 1) + (test separation distance - 50 mm) · 10] mW at > 1500 MHz and ≤ 6 GHz

12. SAR Test Results

<Note>

- Per KDB 447498 D01v05, the reported SAR is the measured SAR value adjusted for maximum tune-up tolerance.
 $Scaling\ Factor = \frac{tune-up\ limit\ power\ (mW)}{EUT\ RF\ power\ (mW)}$, where tune-up limit is the maximum rated power among all production units.
 $Reported\ SAR(W/kg) = Measured\ SAR(W/kg) * Scaling\ Factor$
- Per KDB 447498 D01v05, for each exposure position, if the highest output channel reported SAR <0.8W/kg, other channels SAR testing are not necessary
- Per KDB 447498 D01v05, for each exposure position, testing of other required channels within the operating mode of a frequency band is not required when the reported 1-g or 10-g SAR for the mid-band or highest output power channel is:
 - ≤ 0.8 W/kg or 2.0 W/kg, for 1-g or 10-g respectively, when the transmission band is ≤ 100 MHz
 - ≤ 0.6 W/kg or 1.5 W/kg, for 1-g or 10-g respectively, when the transmission band is between 100 MHz and 200 MHz
 - ≤ 0.4 W/kg or 1.0 W/kg, for 1-g or 10-g respectively, when the transmission band is ≥ 200 MHz

12.1 Test Records for Body SAR Test

<WLAN SAR DTS>

Plot No.	Band	Mode	Test Position	Gap (cm)	Ant	Ch.	Freq. (MHz)	Data Rate	Average Power (dBm)	Tune-Up Limit (dBm)	Tune-up Scaling Factor	Power Drift (dB)	Measured SAR 1g (W/kg)	Scaled SAR 1g (W/kg)
49	WLAN2.4GHz	802.11b	Bottom Face	0cm	Ant 0	6	2437	1Mbps	16.88	17.00	1.029	-0.12	0.082	0.084
50	WLAN2.4GHz	802.11b	Edge4	0cm	Ant 0	6	2437	1Mbps	16.88	17.00	1.029	0.03	0.338	0.348
48	WLAN2.4GHz	802.11b	Bottom Face	0cm	Ant 1	1	2412	1Mbps	15.56	16.00	1.107	0.18	0.039	0.043
51	WLAN2.4GHz	802.11b	Edge2	0cm	Ant 1	1	2412	1Mbps	15.56	16.00	1.107	-0.1	0.053	0.059
52	WLAN2.4GHz	802.11n-HT20	Bottom Face	0cm	Ant 0+1	6	2437	MCS8	15.93	16.00	1.017	-0.16	0.038	0.039
53	WLAN2.4GHz	802.11n-HT20	Edge2	0cm	Ant 0+1	6	2437	MCS8	15.93	16.00	1.017	-0.14	0.024	0.024
54	WLAN2.4GHz	802.11n-HT20	Edge4	0cm	Ant 0+1	6	2437	MCS8	15.93	16.00	1.017	0.07	0.141	0.143

Plot No.	Band	Mode	Test Position	Gap (cm)	Ant	Ch.	Freq. (MHz)	Data Rate	Average Power (dBm)	Tune-Up Limit (dBm)	Tune-up Scaling Factor	Power Drift (dB)	Measured SAR 1g (W/kg)	Scaled SAR 1g (W/kg)
32	WLAN5GHz	802.11a	Bottom Face	0cm	Ant 0	149	5745	6Mbps	14.38	14.50	1.028	-0.14	0.052	0.053
33	WLAN5GHz	802.11a	Edge1	0cm	Ant 0	149	5745	6Mbps	14.38	14.50	1.028	-0.17	0.039	0.040
34	WLAN5GHz	802.11a	Edge4	0cm	Ant 0	149	5745	6Mbps	14.38	14.50	1.028	-0.1	0.435	0.447
35	WLAN5GHz	802.11n-HT20	Edge4	0cm	Ant 0	149	5745	MCS0	14.68	15.00	1.075	-0.19	0.491	0.528
45	WLAN5GHz	802.11n-HT40	Edge4	0cm	Ant 0	151	5755	MCS0	18.46	18.50	1.009	-0.03	1.23	1.241
47	WLAN5GHz	802.11n-HT40	Edge4	0cm	Ant 0	159	5795	MCS0	17.49	18.50	1.262	-0.07	1.15	1.451
37	WLAN5GHz	802.11a	Bottom Face	0cm	Ant 1	149	5745	6Mbps	15.90	16.00	1.023	-0.15	0.078	0.080
38	WLAN5GHz	802.11a	Edge1	0cm	Ant 1	149	5745	6Mbps	15.90	16.00	1.023	-0.01	0.097	0.099
39	WLAN5GHz	802.11a	Edge2	0cm	Ant 1	149	5745	6Mbps	15.90	16.00	1.023	-0.14	0.267	0.273
40	WLAN5GHz	802.11n-HT40	Edge2	0cm	Ant 1	151	5755	MCS0	19.92	20.50	1.142	0.04	0.694	0.792
41	WLAN5GHz	802.11n-HT20	Bottom Face	0cm	Ant 0+1	149	5745	MCS8	16.33	17.00	1.166	-0.07	0.073	0.085
42	WLAN5GHz	802.11n-HT20	Edge1	0cm	Ant 0+1	149	5745	MCS8	16.33	17.00	1.166	-0.06	0.073	0.085
43	WLAN5GHz	802.11n-HT20	Edge2	0cm	Ant 0+1	149	5745	MCS8	16.33	17.00	1.166	-0.03	0.17	0.198
44	WLAN5GHz	802.11n-HT20	Edge4	0cm	Ant 0+1	149	5745	MCS8	16.33	17.00	1.166	0.09	0.389	0.454



<WLAN SAR NII>

Plot No.	Band	Mode	Test Position	Gap (cm)	Ant	Ch.	Freq. (MHz)	Data Rate	Average Power (dBm)	Tune-Up Limit (dBm)	Tune-up Scaling Factor	Power Drift (dB)	Measured SAR 1g (W/kg)	Scaled SAR 1g (W/kg)
1	WLAN5GHz	802.11a	Bottom Face	0cm	Ant 0	44	5220	6Mbps	16.09	16.50	1.098	-0.07	0.103	0.113
2	WLAN5GHz	802.11a	Edge1	0cm	Ant 0	44	5220	6Mbps	16.09	16.50	1.098	-0.02	0.036	0.040
3	WLAN5GHz	802.11a	Edge4	0cm	Ant 0	44	5220	6Mbps	16.09	16.50	1.098	-0.03	0.344	0.378
4	WLAN5GHz	802.11n-HT20	Edge4	0cm	Ant 0	44	5220	MCS0	16.40	17.00	1.147	0.05	0.365	0.419
12	WLAN5GHz	802.11a	Bottom Face	0cm	Ant 0	64	5320	6Mbps	16.39	16.50	1.025	-0.13	0.134	0.137
13	WLAN5GHz	802.11a	Edge1	0cm	Ant 0	64	5320	6Mbps	16.39	16.50	1.025	-0.1	0.032	0.033
14	WLAN5GHz	802.11a	Edge4	0cm	Ant 0	64	5320	6Mbps	16.39	16.50	1.025	-0.02	0.369	0.378
22	WLAN5GHz	802.11a	Bottom Face	0cm	Ant 0	116	5580	6Mbps	16.48	16.5	1.005	-0.11	0.072	0.072
23	WLAN5GHz	802.11a	Edge1	0cm	Ant 0	116	5580	6Mbps	16.48	16.5	1.005	0.11	0.011	0.011
24	WLAN5GHz	802.11a	Edge4	0cm	Ant 0	116	5580	6Mbps	16.48	16.5	1.005	0.18	0.383	0.385
5	WLAN5GHz	802.11a	Bottom Face	0cm	Ant 1	36	5180	6Mbps	15.77	16.00	1.054	-0.16	0.093	0.098
6	WLAN5GHz	802.11a	Edge1	0cm	Ant 1	36	5180	6Mbps	15.77	16.00	1.054	-0.17	0.099	0.104
7	WLAN5GHz	802.11a	Edge2	0cm	Ant 1	36	5180	6Mbps	15.77	16.00	1.054	-0.15	0.657	0.693
15	WLAN5GHz	802.11a	Bottom Face	0cm	Ant 1	64	5320	6Mbps	15.84	16.00	1.037	0.02	0.08	0.083
16	WLAN5GHz	802.11a	Edge1	0cm	Ant 1	64	5320	6Mbps	15.84	16.00	1.037	-0.17	0.061	0.063
17	WLAN5GHz	802.11a	Edge2	0cm	Ant 1	64	5320	6Mbps	15.84	16.00	1.037	-0.14	0.48	0.498
25	WLAN5GHz	802.11a	Bottom Face	0cm	Ant 1	116	5580	6Mbps	15.59	16.00	1.099	-0.02	0.077	0.085
26	WLAN5GHz	802.11a	Edge1	0cm	Ant 1	116	5580	6Mbps	15.59	16.00	1.099	-0.06	0.049	0.054
27	WLAN5GHz	802.11a	Edge2	0cm	Ant 1	116	5580	6Mbps	15.59	16.00	1.099	-0.19	0.4	0.439
8	WLAN5GHz	802.11n-HT20	Bottom Face	0cm	Ant 0+1	36	5180	MCS8	15.96	16.00	1.010	-0.14	0.044	0.044
9	WLAN5GHz	802.11n-HT20	Edge1	0cm	Ant 0+1	36	5180	MCS8	15.96	16.00	1.010	-0.05	0.045	0.045
10	WLAN5GHz	802.11n-HT20	Edge2	0cm	Ant 0+1	36	5180	MCS8	15.96	16.00	1.010	-0.11	0.342	0.345
11	WLAN5GHz	802.11n-HT20	Edge4	0cm	Ant 0+1	36	5180	MCS8	15.96	16.00	1.010	-0.05	0.174	0.176
18	WLAN5GHz	802.11n-HT20	Bottom Face	0cm	Ant 0+1	60	5300	MCS8	15.83	16.50	1.167	-0.12	0.035	0.041
19	WLAN5GHz	802.11n-HT20	Edge1	0cm	Ant 0+1	60	5300	MCS8	15.83	16.50	1.167	-0.13	0.031	0.036
20	WLAN5GHz	802.11n-HT20	Edge2	0cm	Ant 0+1	60	5300	MCS8	15.83	16.50	1.167	-0.13	0.245	0.286
21	WLAN5GHz	802.11n-HT20	Edge4	0cm	Ant 0+1	60	5300	MCS8	15.83	16.50	1.167	0.11	0.165	0.193
28	WLAN5GHz	802.11n-HT20	Bottom Face	0cm	Ant 0+1	100	5500	MCS8	15.97	16.50	1.129	-0.12	0.059	0.067
29	WLAN5GHz	802.11n-HT20	Edge1	0cm	Ant 0+1	100	5500	MCS8	15.97	16.50	1.129	-0.13	0.028	0.032
30	WLAN5GHz	802.11n-HT20	Edge2	0cm	Ant 0+1	100	5500	MCS8	15.97	16.50	1.129	-0.1	0.254	0.287
31	WLAN5GHz	802.11n-HT20	Edge4	0cm	Ant 0+1	100	5500	MCS8	15.97	16.50	1.129	-0.1	0.265	0.299



12.2 Repeated SAR Measurement

Plot No.	Band	Mode	Test Position	Gap (cm)	Ant	Ch.	Freq. (MHz)	Data Rate	Average Power (dBm)	Tune-Up Limit (dBm)	Tune-up Scaling Factor	Power Drift (dB)	Measured SAR 1g (W/kg)	Ratio	Scaled SAR 1g (W/kg)
45	WLAN5GHz	802.11n-HT40	Edge4	0cm	Ant 0	151	5755	MCS0	18.46	18.50	1.009	-0.03	1.23	1	1.241
46	WLAN5GHz	802.11n-HT40	Edge4	0cm	Ant 0	151	5755	MCS0	18.46	18.50	1.009	-0.02	1.2	1.03	1.211

Note:

1. Per KDB 865664 D01v01, for each frequency band, repeated SAR measurement is required only when the measured SAR is $\geq 0.8W/kg$
2. Per KDB 865664 D01v01, if the ratio among the repeated measurement is ≤ 1.2 and the measured SAR $< 1.45W/kg$, only one repeated measurement is required.
3. The deviation is the difference in percentage between original and repeated *measured SAR*.
4. All measurement SAR result is scaled-up to account for tune-up tolerance and is compliant.

12.3 Highest SAR Plot

Test Laboratory: Sporton International Inc. SAR/HAC Testing Lab

Date: 2013/3/18

#50_WLAN2.4G_802.11b_Edge4_0cm_Ch6;Ant 0

DUT: 322149-01

Communication System: 802.11b; Frequency: 2437 MHz; Duty Cycle: 1:1

Medium: MSL_2450_130318 Medium parameters used: $f = 2437$ MHz; $\sigma = 2.001$ mho/m; $\epsilon_r = 53.956$; ρ

$= 1000$ kg/m³

Ambient Temperature : 22.4°C; Liquid Temperature : 21.4°C

DASY5 Configuration:

- Probe: EX3DV4 - SN3792; ConvF(7.1, 7.1, 7.1); Calibrated: 2012/6/21;
- Sensor-Surface: 2mm (Mechanical Surface Detection)
- Electronics: DAE4 Sn1338; Calibrated: 2012/6/12
- Phantom: ELI 4.0 Front; Type: QDOVA001BB; Serial: 1029
- Measurement SW: DASY52, Version 52.8 (3); SEMCAD X Version 14.6.5 (6469)

Configuration/Ch6/Area Scan (61x101x1): Measurement grid: dx=12mm, dy=12mm

Maximum value of SAR (interpolated) = 0.485 mW/g

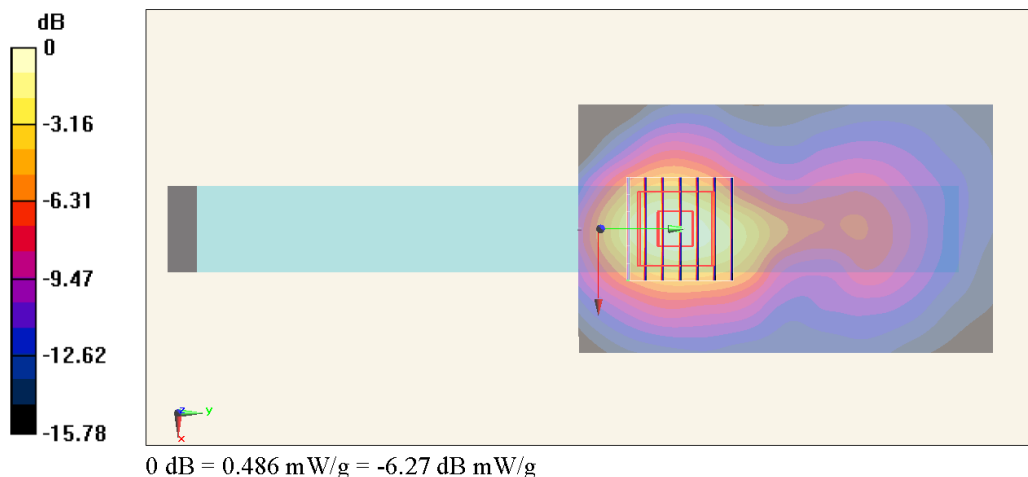
Configuration/Ch6/Zoom Scan (7x7x7)/Cube 0: Measurement grid: dx=5mm, dy=5mm, dz=5mm

Reference Value = 15.545 V/m; Power Drift = 0.03 dB

Peak SAR (extrapolated) = 0.633 mW/g

SAR(1 g) = 0.338 mW/g; SAR(10 g) = 0.174 mW/g

Maximum value of SAR (measured) = 0.486 mW/g



Test Laboratory: Sporton International Inc. SAR/HAC Testing Lab

Date: 2013/3/17

#47_WLAN5G_802.11n-HT40_Edge4_0cm_Ch159;Ant 0

DUT: 322149-01

Communication System: 802.11n; Frequency: 5795 MHz; Duty Cycle: 1:1
 Medium: MSL_5G_130317 Medium parameters used : $f = 5795$ MHz; $\sigma = 6.14$ mho/m; $\epsilon_r = 46.513$; $\rho = 1000$ kg/m³
 Ambient Temperature : 22.2°C; Liquid Temperature : 21.2°C

DASY5 Configuration:

- Probe: EX3DV4 - SN3792; ConvF(3.89, 3.89, 3.89); Calibrated: 2012/6/21;
- Sensor-Surface: 1.4mm (Mechanical Surface Detection)
- Electronics: DAE4 Sn1338; Calibrated: 2012/6/12
- Phantom: ELI 4.0_Front; Type: QDOVA001BB; Serial: 1029
- Measurement SW: DASY52, Version 52.8 (3); SEMCAD X Version 14.6.5 (6469)

Configuration/Ch159/Area Scan (71x121x1): Measurement grid: dx=10mm, dy=10mm
 Maximum value of SAR (interpolated) = 3.68 mW/g

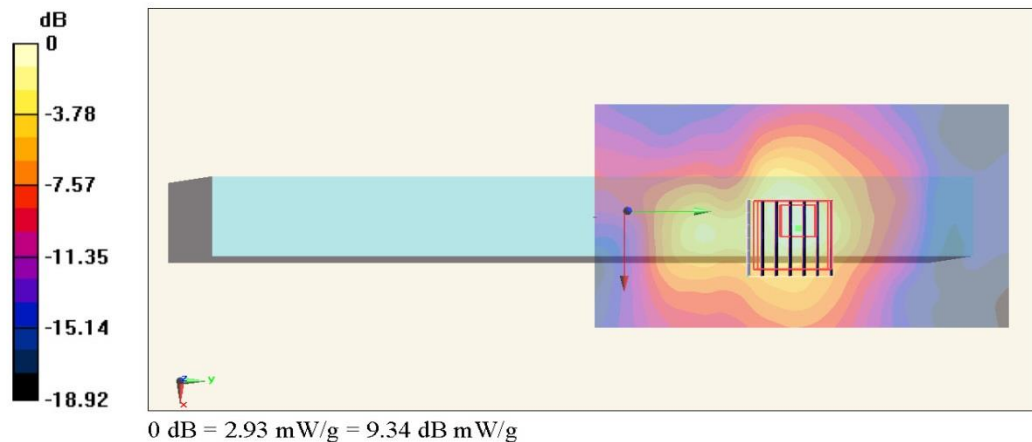
Configuration/Ch159/Zoom Scan (7x7x7)/Cube 0: Measurement grid: dx=4mm, dy=4mm, dz=1.4mm

Reference Value = 29.253 V/m; Power Drift = -0.07 dB

Peak SAR (extrapolated) = 4.960 mW/g

SAR(1 g) = 1.15 mW/g; SAR(10 g) = 0.385 mW/g

Maximum value of SAR (measured) = 2.93 mW/g



12.4 Simultaneous Multi-band Transmission Analysis

No.	Applicable Simultaneous Transmission Combination
1.	WWAN(data) + BT

Note:

1. WLAN Main antenna and Bluetooth cannot transmit simultaneously.
2. WLAN Aux antenna and Bluetooth share the same antenna, and cannot transmit simultaneously.
3. By design, WLAN 2.4GHz and 5GHz frequency band does not support mobile hotspot operation.
4. EUT will choose either WLAN2.4GHz or WLAN5GHz according to the network signal condition; therefore, they will not transmit simultaneously.
5. WWAN module is also integrated into this host, WWAN power and SAR test data is referred to Sporton FCC SAR Report, FCC ID: YE3800B and Report No: FA322149.
6. Per KDB 447498 D01v05, simultaneous transmission SAR is compliant if,
 - i) Scalar SAR summation < 1.6W/kg.
 - ii) $SPLSR = (SAR_1 + SAR_2)^{1.5} / (min. \text{ separation distance, mm})$, and the peak separation distance is determined from the square root of $[(x_1-x_2)^2 + (y_1-y_2)^2 + (z_1-z_2)^2]$, where (x_1, y_1, z_1) and (x_2, y_2, z_2) are the coordinates of the extrapolated peak SAR locations in the zoom scan
If $SPLSR \leq 0.04$, simultaneously transmission SAR measurement is not necessary
 - iii) Simultaneously transmission SAR measurement, and the reported multi-band SAR < 1.6W/kg
7. For simultaneous transmission analysis, SAR is estimated per KDB 447498 D01v05 based on the formula below.
 - i) $(max. \text{ power of channel, including tune-up tolerance, mW}) / (min. \text{ test separation distance, mm}) \cdot [\sqrt{f(\text{GHz})} / x]$ W/kg for test separation distances ≤ 50 mm; where $x = 7.5$ for 1-g SAR, and $x = 18.75$ for 10-g SAR.
 - ii) 0.4 W/kg for 1-g SAR and 1.0 W/kg for 10-g SAR, when the test separation distances is > 50 mm.

Bluetooth Max Power	Exposure Position	Bottom Face	Edge 1	Edge 2
	Test separation	0 mm	0 mm	0 mm
6 dBm	Antenna to user distance	5 mm	39.8 mm	5 mm
	Estimated SAR (W/kg)	0.167 W/kg	0.021 W/kg	0.167 W/kg

Position	WWAN		Bluetooth	WWAN + Bluetooth	SPLSR	Case No
	WWAN Band	SAR (W/kg)	Estimated SAR (W/kg)			
Bottom Face At 0cm	CDMA BC0	0.625	0.167	0.79		
	CDMA BC1	0.383	0.167	0.55		
Edge1 At 0cm	CDMA BC0	0.746	0.021	0.77		
	CDMA BC1	1.462	0.021	1.48		
Edge2 At 0cm	CDMA BC0	0.111	0.167	0.28		
	CDMA BC1	0.158	0.167	0.33		

Test Engineer : Vic Yang, Aaron Chen, Nick Yu, Bevis Chang, and Jack Wu

13. Uncertainty Assessment

The component of uncertainty may generally be categorized according to the methods used to evaluate them. The evaluation of uncertainty by the statistical analysis of a series of observations is termed a Type A evaluation of uncertainty. The evaluation of uncertainty by means other than the statistical analysis of a series of observations is termed a Type B evaluation of uncertainty. Each component of uncertainty, however evaluated, is represented by an estimated standard deviation, termed standard uncertainty, which is determined by the positive square root of the estimated variance.

A Type A evaluation of standard uncertainty may be based on any valid statistical method for treating data. This includes calculating the standard deviation of the mean of a series of independent observations; using the method of least squares to fit a curve to the data in order to estimate the parameter of the curve and their standard deviations; or carrying out an analysis of variance in order to identify and quantify random effects in certain kinds of measurement.

A type B evaluation of standard uncertainty is typically based on scientific judgment using all of the relevant information available. These may include previous measurement data, experience, and knowledge of the behavior and properties of relevant materials and instruments, manufacture’s specification, data provided in calibration reports and uncertainties assigned to reference data taken from handbooks. Broadly speaking, the uncertainty is either obtained from an outdoor source or obtained from an assumed distribution, such as the normal distribution, rectangular or triangular distributions indicated in Table 12.1

Uncertainty Distributions	Normal	Rectangular	Triangular	U-Shape
Multi-plying Factor ^(a)	1/k ^(b)	1/√3	1/√6	1/√2

(a) standard uncertainty is determined as the product of the multiplying factor and the estimated range of variations in the measured quantity

(b) κ is the coverage factor

Table 13.1 Standard Uncertainty for Assumed Distribution

The combined standard uncertainty of the measurement result represents the estimated standard deviation of the result. It is obtained by combining the individual standard uncertainties of both Type A and Type B evaluation using the usual “root-sum-squares” (RSS) methods of combining standard deviations by taking the positive square root of the estimated variances.

Expanded uncertainty is a measure of uncertainty that defines an interval about the measurement result within which the measured value is confidently believed to lie. It is obtained by multiplying the combined standard uncertainty by a coverage factor. Typically, the coverage factor ranges from 2 to 3. Using a coverage factor allows the true value of a measured quantity to be specified with a defined probability within the specified uncertainty range. For purpose of this document, a coverage factor two is used, which corresponds to confidence interval of about 95 %. The DASY uncertainty Budget is shown in the following tables.



Error Description	Uncertainty Value (±%)	Probability Distribution	Divisor	Ci (1g)	Ci (10g)	Standard Uncertainty (1g)	Standard Uncertainty (10g)
Measurement System							
Probe Calibration	6.0	Normal	1	1	1	± 6.0 %	± 6.0 %
Axial Isotropy	4.7	Rectangular	√3	0.7	0.7	± 1.9 %	± 1.9 %
Hemispherical Isotropy	9.6	Rectangular	√3	0.7	0.7	± 3.9 %	± 3.9 %
Boundary Effects	1.0	Rectangular	√3	1	1	± 0.6 %	± 0.6 %
Linearity	4.7	Rectangular	√3	1	1	± 2.7 %	± 2.7 %
System Detection Limits	1.0	Rectangular	√3	1	1	± 0.6 %	± 0.6 %
Readout Electronics	0.3	Normal	1	1	1	± 0.3 %	± 0.3 %
Response Time	0.8	Rectangular	√3	1	1	± 0.5 %	± 0.5 %
Integration Time	2.6	Rectangular	√3	1	1	± 1.5 %	± 1.5 %
RF Ambient Noise	3.0	Rectangular	√3	1	1	± 1.7 %	± 1.7 %
RF Ambient Reflections	3.0	Rectangular	√3	1	1	± 1.7 %	± 1.7 %
Probe Positioner	0.4	Rectangular	√3	1	1	± 0.2 %	± 0.2 %
Probe Positioning	2.9	Rectangular	√3	1	1	± 1.7 %	± 1.7 %
Max. SAR Eval.	1.0	Rectangular	√3	1	1	± 0.6 %	± 0.6 %
Test Sample Related							
Device Positioning	2.9	Normal	1	1	1	± 2.9 %	± 2.9 %
Device Holder	3.6	Normal	1	1	1	± 3.6 %	± 3.6 %
Power Drift	5.0	Rectangular	√3	1	1	± 2.9 %	± 2.9 %
Phantom and Setup							
Phantom Uncertainty	4.0	Rectangular	√3	1	1	± 2.3 %	± 2.3 %
Liquid Conductivity (Target)	5.0	Rectangular	√3	0.64	0.43	± 1.8 %	± 1.2 %
Liquid Conductivity (Meas.)	2.5	Normal	1	0.64	0.43	± 1.6 %	± 1.1 %
Liquid Permittivity (Target)	5.0	Rectangular	√3	0.6	0.49	± 1.7 %	± 1.4 %
Liquid Permittivity (Meas.)	2.5	Normal	1	0.6	0.49	± 1.5 %	± 1.2 %
Combined Standard Uncertainty						± 11.0 %	± 10.8 %
Coverage Factor for 95 %						K=2	
Expanded Uncertainty						± 22.0 %	± 21.5 %

Table 13.2 Uncertainty Budget for frequency range 300 MHz to 3 GHz according to IEEE 1528-2003



Error Description	Uncertainty Value (±%)	Probability Distribution	Divisor	Ci (1g)	Ci (10g)	Standard Uncertainty (1g)	Standard Uncertainty (10g)
Measurement System							
Probe Calibration	6.55	Normal	1	1	1	± 6.55 %	± 6.55 %
Axial Isotropy	4.7	Rectangular	√3	0.7	0.7	± 1.9 %	± 1.9 %
Hemispherical Isotropy	9.6	Rectangular	√3	0.7	0.7	± 3.9 %	± 3.9 %
Boundary Effects	2.0	Rectangular	√3	1	1	± 1.2 %	± 1.2 %
Linearity	4.7	Rectangular	√3	1	1	± 2.7 %	± 2.7 %
System Detection Limits	1.0	Rectangular	√3	1	1	± 0.6 %	± 0.6 %
Readout Electronics	0.3	Normal	1	1	1	± 0.3 %	± 0.3 %
Response Time	0.8	Rectangular	√3	1	1	± 0.5 %	± 0.5 %
Integration Time	2.6	Rectangular	√3	1	1	± 1.5 %	± 1.5 %
RF Ambient Noise	3.0	Rectangular	√3	1	1	± 1.7 %	± 1.7 %
RF Ambient Reflections	3.0	Rectangular	√3	1	1	± 1.7 %	± 1.7 %
Probe Positioner	0.8	Rectangular	√3	1	1	± 0.5 %	± 0.5 %
Probe Positioning	9.9	Rectangular	√3	1	1	± 5.7 %	± 5.7 %
Max. SAR Eval.	4.0	Rectangular	√3	1	1	± 2.3 %	± 2.3 %
Test Sample Related							
Device Positioning	2.9	Normal	1	1	1	± 2.9 %	± 2.9 %
Device Holder	3.6	Normal	1	1	1	± 3.6 %	± 3.6 %
Power Drift	5.0	Rectangular	√3	1	1	± 2.9 %	± 2.9 %
Phantom and Setup							
Phantom Uncertainty	4.0	Rectangular	√3	1	1	± 2.3 %	± 2.3 %
Liquid Conductivity (Target)	5.0	Rectangular	√3	0.64	0.43	± 1.8 %	± 1.2 %
Liquid Conductivity (Meas.)	2.5	Normal	1	0.64	0.43	± 1.6 %	± 1.1 %
Liquid Permittivity (Target)	5.0	Rectangular	√3	0.6	0.49	± 1.7 %	± 1.4 %
Liquid Permittivity (Meas.)	2.5	Normal	1	0.6	0.49	± 1.5 %	± 1.2 %
Combined Standard Uncertainty						± 12.8 %	± 12.6 %
Coverage Factor for 95 %						K=2	
Expanded Uncertainty						± 25.6 %	± 25.2 %

Table 13.3 Uncertainty Budget for frequency range 3 GHz to 6 GHz according to Dasy5 user manual



14. References

- [1] FCC 47 CFR Part 2 “Frequency Allocations and Radio Treaty Matters; General Rules and Regulations”
- [2] ANSI/IEEE Std. C95.1-1992, “IEEE Standard for Safety Levels with Respect to Human Exposure to Radio Frequency Electromagnetic Fields, 3 kHz to 300 GHz”, September 1992
- [3] IEEE Std. 1528-2003, “Recommended Practice for Determining the Peak Spatial-Average Specific Absorption Rate (SAR) in the Human Head from Wireless Communications Devices: Measurement Techniques”, December 2003
- [4] FCC OET Bulletin 65 (Edition 97-01) Supplement C (Edition 01-01), “Evaluating Compliance with FCC Guidelines for Human Exposure to Radiofrequency Electromagnetic Fields”, June 2001
- [5] SPEAG DASY System Handbook
- [6] FCC KDB 248227 D01 v01r02, “SAR Measurement Procedures for 802.11 a/b/g Transmitters”, May 2007
- [7] FCC KDB 447498 D01 v05, “Mobile and Portable Device RF Exposure Procedures and Equipment Authorization Policies”, October 2012
- [8] FCC KDB 616217 D04 v01, “SAR Evaluation Considerations for Laptop, Notebook, Netbook and Tablet Computers”, October 2012