

Troubleshooting

Table with 3 columns: Problem, Reason, Solution. Rows include Power Switch LED not on, Handset not working, Auto-Start Button not working, Flaps difficult to perform, Juice Button not working, and Drone is out of control.

DECLARATION OF CONFORMITY

Manufacturer's Name: China Industries Ltd. TA Wow! Stuff... Type of Equipment: AI Stunt Drone... CE mark and other regulatory information.



Distributed by: China Industries Ltd. TA Wow! Stuff... Wovenhampton, W9 10 9TB. www.wowstuff.com

For the most updated instructions as well as Tips & Tricks go to: www.juice.com

Operating Safety Instructions

When using indoors, choose a spacious, obstacle-free area... When using outdoors, choose a fine, calm day... Safety & Maintenance... Always keep the product clean...

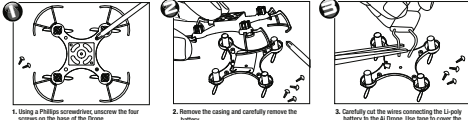
When the drone is hovering at a constant height, not close to the ceiling, wall, floor etc. the user can stop the drone by pressing once the Juice Button (7) (1 second).

Replacing the Propellers

It is recommended to use tweezers in order to replace the propellers... Front (blue) LED left is A1/A2/A3/A4, right is B1/B2/B3/B4. Back (red) LED left is B1/B2/B3/B4, right is A1/A2/A3/A4.

Disposal of AI Drone

Disposal of Li-poly battery instructions... Warning: Batteries should only be removed by an adult. Children should not be allowed to carry out the following procedure.



WARNING: CUTTING BOTH WIRES AT THE SAME TIME MAY CAUSE A SHORT CIRCUIT & POTENTIALLY DANGEROUS RISK OF THE BATTERY OVERHEATING

WARNING:

CHOKING HAZARD - Small Parts Not suitable for children under 3 years... Adult supervision required. Operation on 2.4 GHz frequency.

Caution: Risk of eye injuries! Keep a safe distance of at least 2.5m. Always...

Battery Information: Non-rechargeable batteries are not to be recharged... Do not use old or worn batteries... Do not mix alkaline, standard (carbon-zinc) or rechargeable (Ni-Cd) batteries.

Do not dispose of batteries in a fire. Consumers have a significant role to play in reducing the impact of waste, electrical and electronic equipment on the environment.

This device complies with Part 15 of the FCC Rules... Warning: Changes or modifications to this unit not expressly approved by the party responsible for compliance could void the user's authority to operate the equipment.

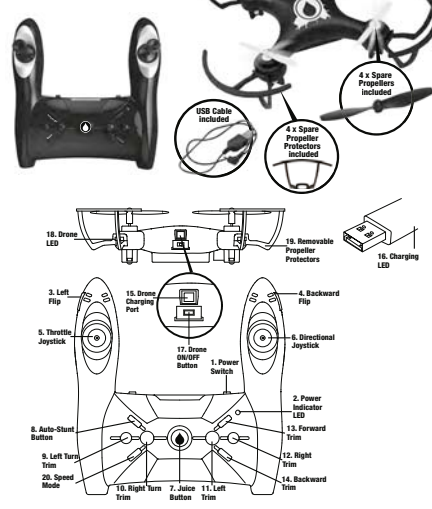
Battery requirement for Handset: Rating: 4 x 1.5V AAA batteries (not included)

For the most updated instructions as well as Tips & Tricks go to: www.juice.com

Product image of the AI Stunt Drone with 'JUICE' branding and 'ARTIFICIAL INTELLIGENCE AI STUNT DRONE' text. Includes a 'Tricks & Tips for Great Flights!' badge and the website www.juice.com.

Contents

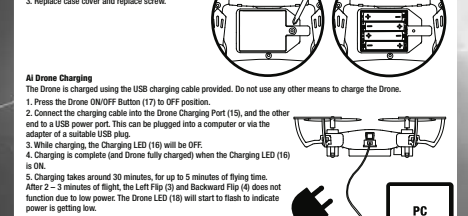
- AI Drone includes rechargeable Li-poly battery and in-built ground detection system
2.4 GHz TX Handset uses 4 x AAA 1.5V batteries (not included)
USB charging cable
4 x spare propellers (1 set)
4 x spare removable propeller protectors
Full instructions for use



For the most updated instructions as well as Tips & Tricks go to: www.juice.com

Charging

Handset Charging: The handset is charged and powered by the 4 x 1.5V AAA batteries inserted into the handset as shown below. Using a screw driver, loosen the screw and remove the case cover.



AI Drone Charging: The drone is charged using the USB charging cable provided. Do not use any other means to charge the Drone. Press the Drone ON/OFF Button (7) to OFF position.

Where to Fly the AI Drone: The AI Drone is best flown indoors, though in calm weather conditions it can also be flown outdoors. Note that the proximity sensor will not perform outdoors in sunlight.

Replacing the Propeller Protectors



For the most updated instructions as well as Tips & Tricks go to: www.juice.com

Flying the AI Drone

The Drone can be flown in one of two ways, using the Juice Button with proximity sensors or advanced flying mode with sensors deactivated. Getting Started with the Juice Button: Note, the Juice Button flight uses patented proximity sensors that will not operate in sunlight.

Auto-Start Operation: The Auto-Start Operation can only be activated when flight was started with the Juice Button. Press Auto-Start Button (8), then push the Throttle Joystick (5) forward and the Drone will take to the skies!

Advanced Flying: The Drone can also be flown without any proximity sensors. Follow steps 1-5 in section Getting Started with the Juice Button (7) then push the Throttle Joystick (5) forward and the Drone will take to the skies!

Trimming the Drone: To get best performance for the AI Drone, it is important to trim it. To adjust trimming we recommend: When the Drone is flying forward, push the Backward Trim (14)...

For the most updated instructions as well as Tips & Tricks go to: www.juice.com

Product image of the AI Drone with 'JUICE' branding and 'THE JUICE BUTTON ACTIVATES AUTO TAKE-OFF, AUTO-HOVER & AUTO-LAND' text. Includes a 'Tricks & Tips for Great Flights!' badge and the website www.juice.com.

For the most updated instructions as well as Tips & Tricks go to: www.juice.com