

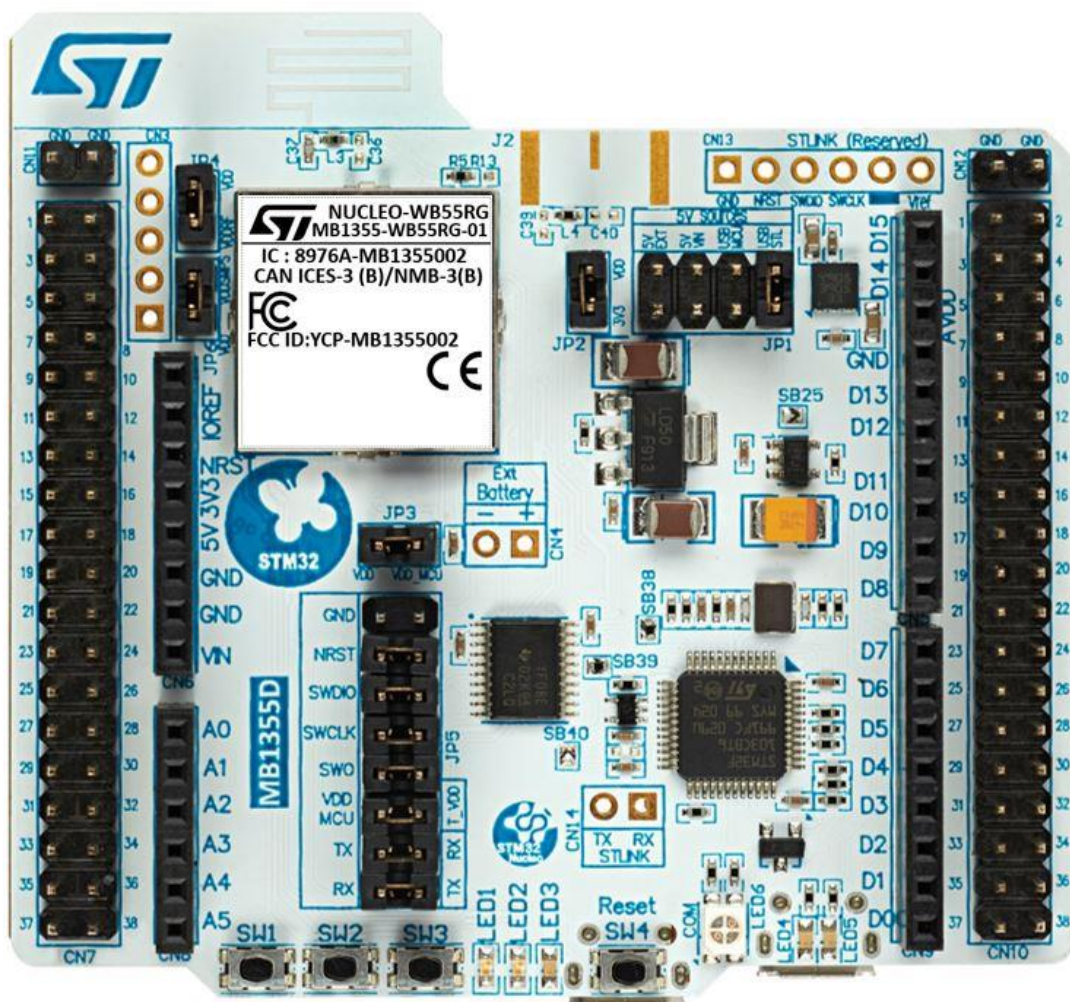
## STM32WB Nucleo-64 board (MB1355)

### Introduction

The NUCLEO-WB55RG STM32WB Nucleo-64 board based on the MB1355 board is a Bluetooth® Low Energy wireless and ultra-low-power device embedding a powerful and ultra-low-power radio compliant with the Bluetooth® Low Energy SIG specification v5.2 and IEEE802.15.4-2011 PHY and MAC is supported.

The ARDUINO® Uno V3 connectivity support and the ST morpho headers provide an easy means of expanding the functionality of the STM32WB Nucleo open development platform with a wide choice of specialized shields.

Figure 1. NUCLEO-WB55RG top view



Picture is not contractual.



## 1 Features

- STM32WB55RG (1-Mbytes Flash memory, 256-Kbyte SRAM, in VFQFPN68 package) ultra-low-power wireless microcontroller featuring:
  - Dual-core 32-bit (Arm® Cortex®-M4 and dedicated M0+ CPU for real-time radio layer)
  - 2.4 GHz RF transceiver supporting Bluetooth® specification v5.2
- Three user LEDs
- One reset and three user push-buttons
- Board connectors:
  - ARDUINO® Uno V3 expansion connector
  - ST morpho extension pin headers for full access to all STM32WB I/Os
- Integrated PCB antenna and SMA connector footprint
- Flexible power-supply options: ST-LINK, USB V<sub>BUS</sub>, or external sources
- On-board footprint to mount a CR2032 battery socket
- On-board ST-LINK/V2-1 debugger/programmer with USB re-enumeration capability: mass storage, Virtual COM port, and debug port
- Comprehensive free software libraries and examples available with the [STM32CubeWB MCU Package](#)
- Support of a wide choice of Integrated Development Environments (IDEs) including IAR Embedded Workbench®, MDK-ARM, STM32CubeIDE

*Note:* Arm is a registered trademark of Arm Limited (or its subsidiaries) in the US and/or elsewhere.



## 2 Ordering information

To order the NUCLEO-WB55RG Nucleo-64 board, refer to [Table 1](#). Additional information is available from the datasheet and reference manual of the target STM32.

**Table 1. Ordering information**

Order code	Board reference	Target STM32
NUCLEO-WB55RG	MB1355	STM32WB55RG

### 2.1 Codification

The meaning of the codification is explained in [Table 2](#).

**Table 2. Codification explanation**

NUCLEO-XXRYTZ	Description	Example: NUCLEO-WB55RG
XX	MCU series in STM32 32-bit Arm Cortex MCUs	Wireless Bluetooth® STM32WB Series
Y	Product line in the Series	STM32WBx5 product line
R	Product-specific in the product line: <ul style="list-style-type: none"> <li>1: Die 1, full set of features</li> </ul>	STM32WB55 MCU family
T	STM32 package pin count: <ul style="list-style-type: none"> <li>R for 68 pins</li> </ul>	68-pin package
Z	STM32 Flash memory size: <ul style="list-style-type: none"> <li>G for 1 Mbytes</li> </ul>	1-Mbyte Flash memory

## 3 Development environment

---

### 3.1 System requirements

- Multi-OS support: Windows® 10, Linux® 64-bit, or macOS®
- USB Type-A or USB Type-C® to Micro-B cable

*Note:* macOS® is a trademark of Apple Inc. registered in the U.S. and other countries.  
Linux® is a registered trademark of Linus Torvalds.  
All other trademarks are the property of their respective owners.

### 3.2 Development toolchains

- IAR Systems® - IAR Embedded Workbench®(1)
- Keil® - MDK-ARM(1)
- STMicroelectronics - STM32CubeIDE

1. On Windows® only.

### 3.3 Demonstration software

The demonstration software, included in the STM32Cube MCU Package corresponding to the on-board microcontroller, is preloaded in the STM32 Flash memory for easy demonstration of the device peripherals in standalone mode. The latest versions of the demonstration source code and associated documentation can be downloaded from [www.st.com](http://www.st.com).

## 4 Conventions

Table 3 provides the conventions used for the ON and OFF settings in the present document.

**Table 3. ON/OFF convention**

Convention	Definition
Jumper JPx ON	Jumper fitted
Jumper JPx OFF	Jumper not fitted
Jumper JPx [1-2]	Jumper fitted between Pin 1 and Pin 2
Solder bridge SBx ON	SBx connections closed by 0 $\Omega$ resistor
Solder bridge SBx OFF	SBx connections left open
Resistor Rx ON	Resistor soldered
Resistor Rx OFF	Resistor not soldered

## 5 Safety recommendations

---

### 5.1 Targeted audience

This product targets users with at least basic electronics or embedded software development knowledge such as engineers, technicians, or students. This board is not a toy and is not suited for use by children.

### 5.2 Handling the board

This product contains a bare printed circuit board and like all products of this type, the user must be careful about the following points:

- The connection pins on the board may be sharp, be careful when handling the board to avoid hurting yourself
- This board contains static sensitive devices. To avoid damaging it, handle the board in an ESD-proof environment.
- While powered, do not touch the electric connections on the board with your fingers or anything conductive. The board operates at a voltage level that is not dangerous, but components may be damaged when shorted.
- Do not put any liquid on the board and avoid operating the board close to water or at a high humidity level.
- Do not operate the board if dirty or dusty.

## 6 Quick start

This section describes how to quickly start development using NUCLEO-WB55RG.

To use the product, the user must accept the Evaluation Product License Agreement from the [www.st.com/epl](http://www.st.com/epl) webpage. For more information on the STM32WB Nucleo-64 board and demonstration software, visit the [www.st.com/stm32nucleo](http://www.st.com/stm32nucleo) webpage.

Before the first use, make sure that no damage has occurred to the board during shipment:

- All socketed components must be firmly secured in their sockets.
- Nothing must be loose in the board blister.

The Nucleo board is an easy-to-use development kit to quickly evaluate and start development with an STM32 microcontroller in a QFN48 package.

### 6.1 Getting started

Follow the sequence below to configure the STM32WB Nucleo-64 board and launch the demonstration application (Refer to [Figure 3](#) for component location):

1. Check jumper positions on board: JP2, JP3, JP4, and JP6 ON, JP1 (Power source) on USB\_STL, all JP5 jumpers ON except for GND.
2. Install the STMicroelectronics Bluetooth® Low Energy sensor mobile application on a Bluetooth® Low Energy compatible mobile device from App Store® or Google Play™.
3. Connect the Nucleo board to a PC with a USB Type-A or USB Type-C® to Micro-B cable through CN15 USB ST-LINK connector. Once powered on, the LD2 green LED blinks for each advertising interval – timeout after one minute.
4. Use the STMicroelectronics Bluetooth® Low Energy sensor mobile application to detect the STM32WB P2P server (P2PSRV1) and connect it. Once connected, the LD2 green LED blinks for each connection interval. The smartphone application displays the device's service and characteristics.
5. Pushing the B1 button on the board toggles the alarm on the smartphone display. Pushing the B2 button changes the connection interval (50 ms, 1 s). The effect is visible directly on the LD2 green LED of the Nucleo board. On the smartphone, push the lamp to switch ON or OFF the Nucleo board LD1 blue LED. For more details, refer to the user manual *STM32CubeWB Nucleo demonstration firmware (UM2551)*.
6. The demonstration software and several software examples showing how to use the STM32 Nucleo features are available from the [NUCLEO-WB55RG](#) product location.

## 7 Hardware layout and configuration

The NUCLEO-WB55RG Nucleo-64 board is designed around the STM32WB55RG microcontroller. The hardware block diagram in [Figure 2](#) illustrates the connection between NUCLEO-WB55RG and its peripherals (ARDUINO® Uno V3 connector, ST morpho connector, and embedded ST-LINK).

[Figure 3](#) to [Figure 5](#) help the user to locate these features on the NUCLEO-WB55RG board. The mechanical dimensions of the NUCLEO-WB55RG product are shown in [Figure 6](#).

**Figure 2. Hardware block diagram**

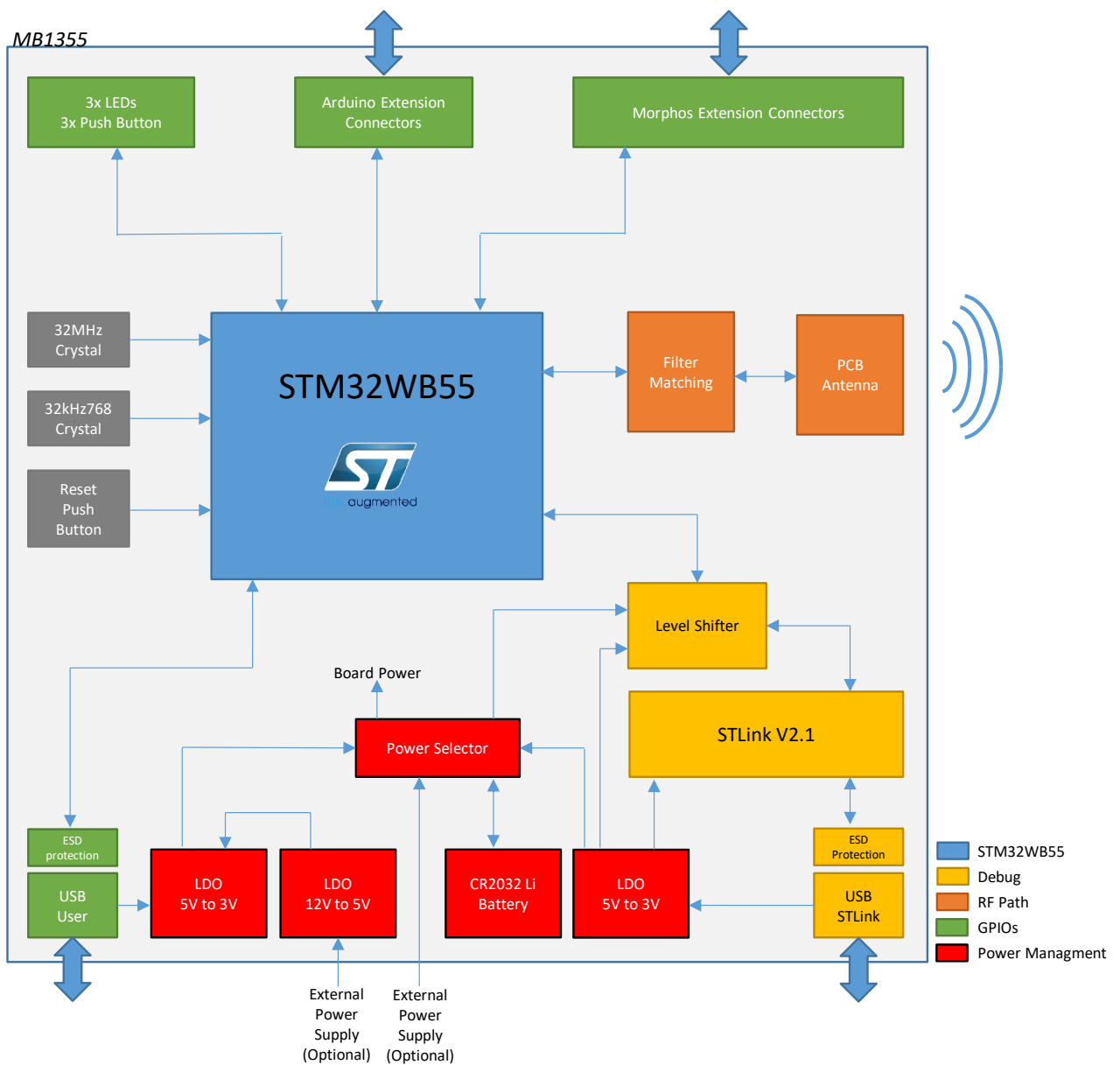




Figure 3. NUCLEO-WB55RG PCB top side

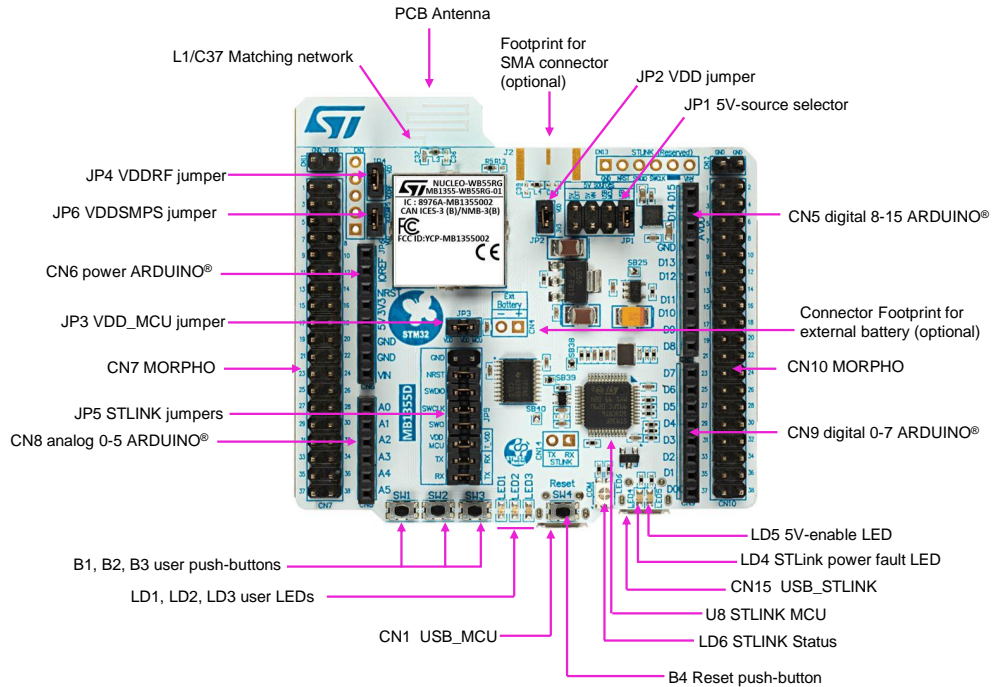


Figure 4. NUCLEO-WB55RG PCB with details of the main part (SoC and RF)

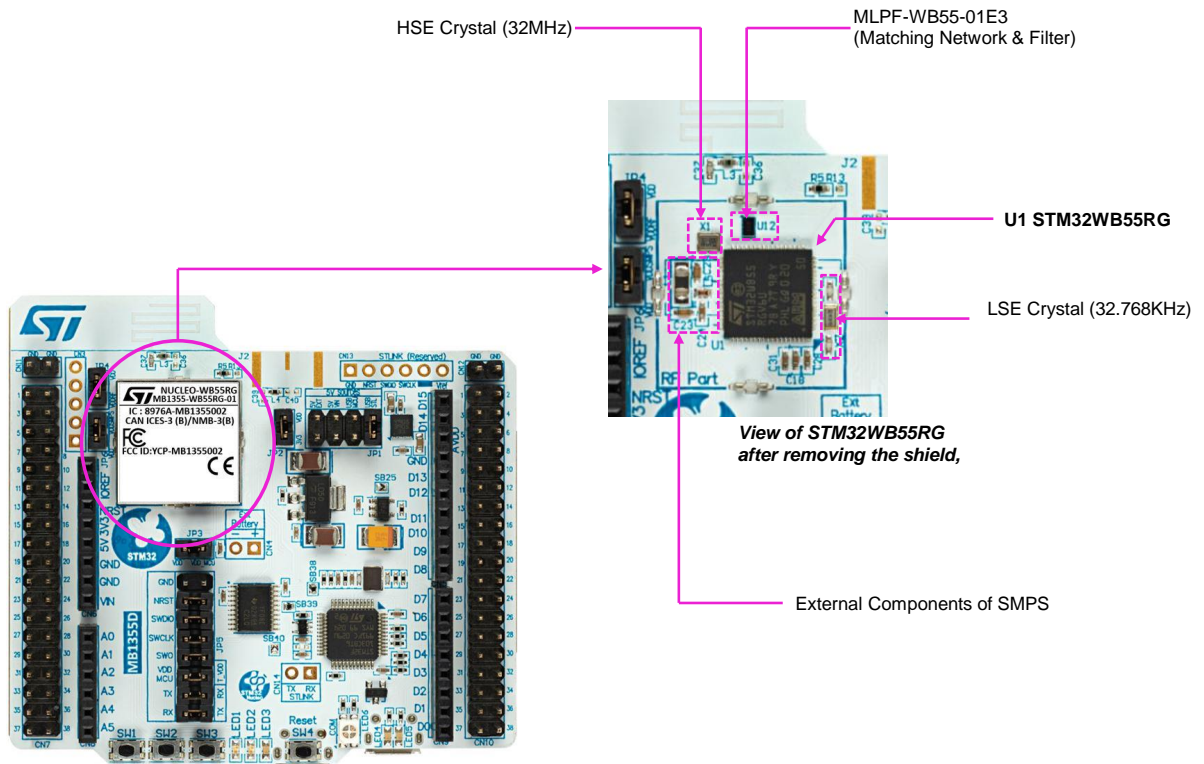
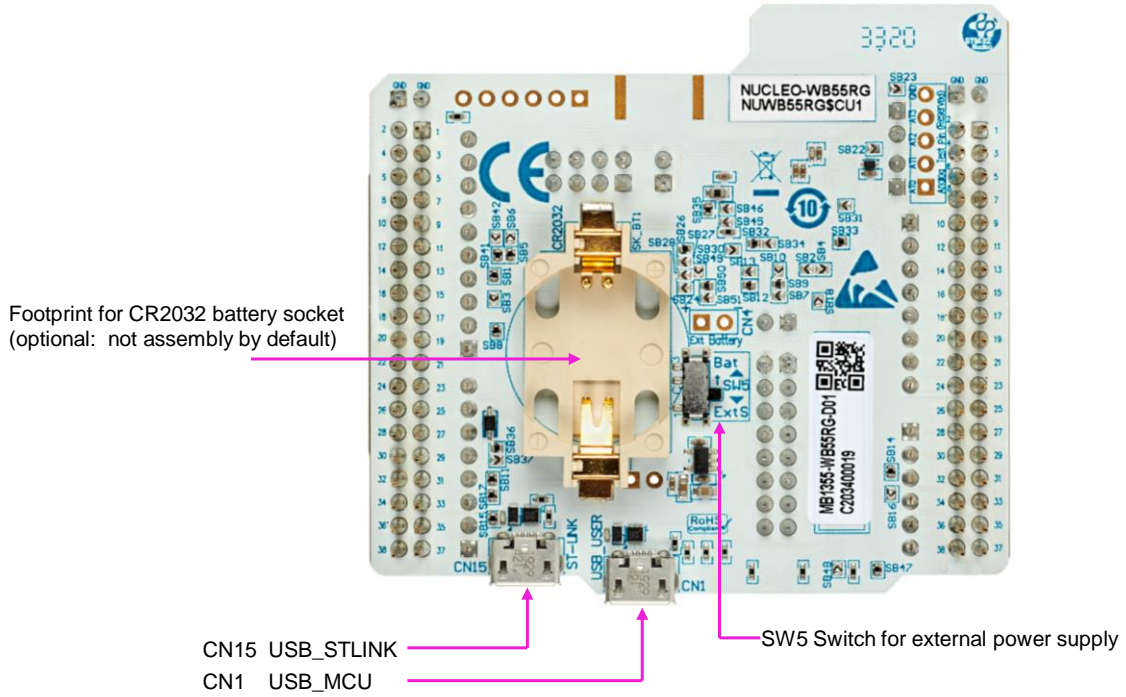
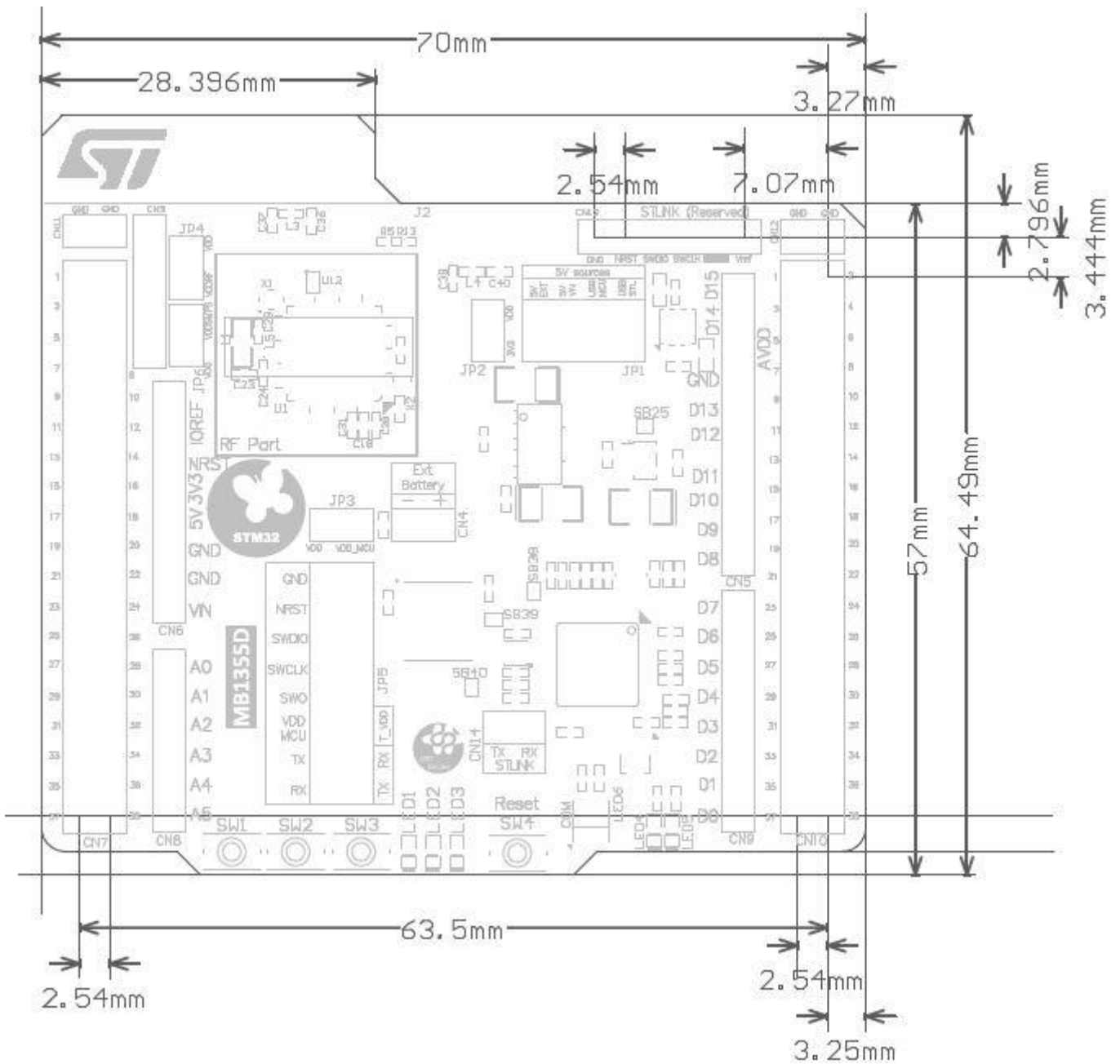


Figure 5. NUCLEO-WB55RG PCB bottom side



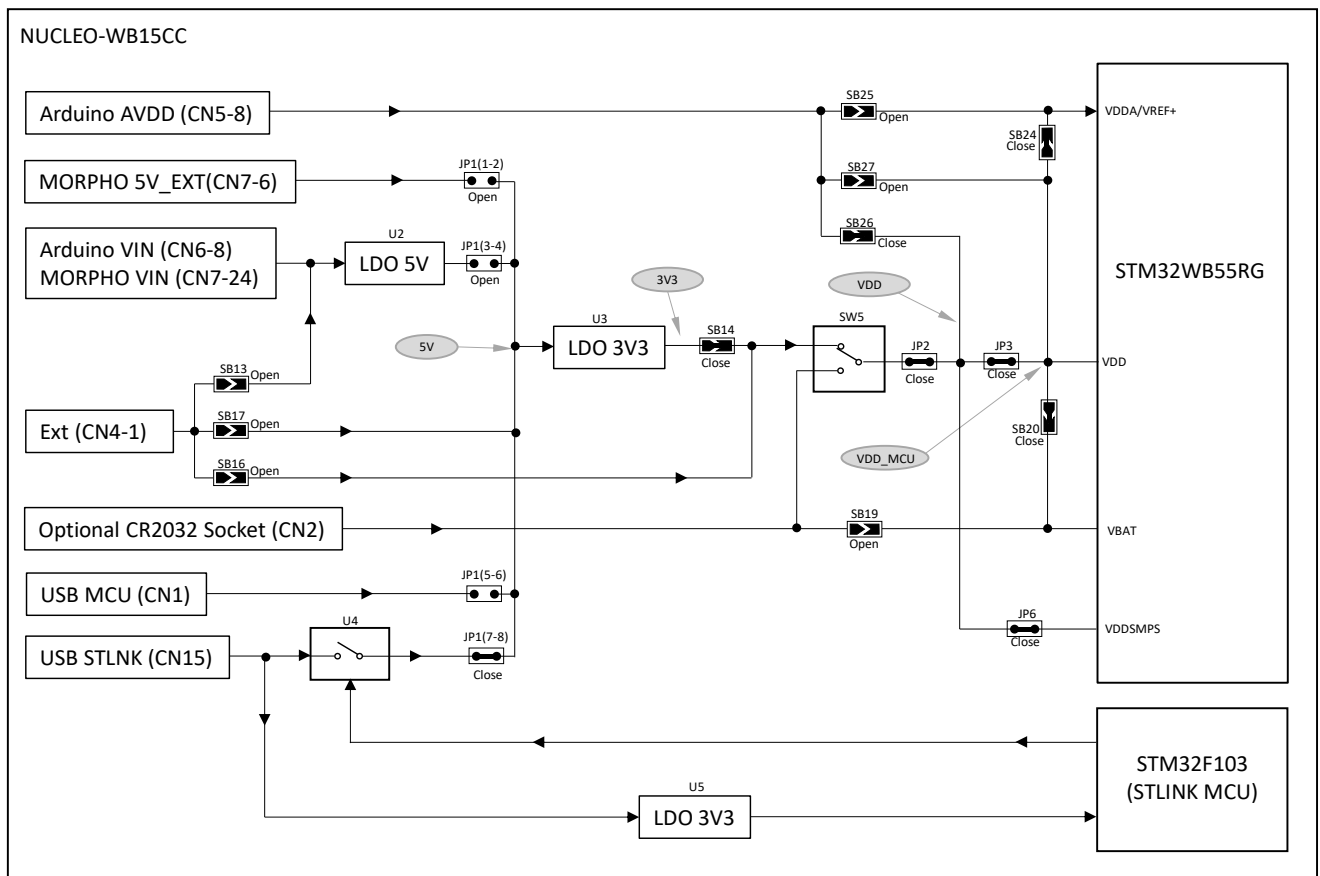
**Figure 6. NUCLEO-WB55RG mechanical dimensions (in millimeters)**


## 7.1 Power supply

### 7.1.1 General description

By default, the STM32WB55RG microcontroller embedded on this Nucleo board is supplied by 3V3 but the board proposes a lot of possibilities to supply the device. The 3.3 V can first come from the ST-LINK USB, ARDUINO®, or ST morpho connectors. Moreover, the STM32WB55RG can be supplied by an external source, between 1.8 and 3.3 V. Thanks to the level shifter, the debug by embedded ST-LINK is always possible even if the supply voltage of the target is different from 3V3 (ST-LINK supply). [Figure 7](#) shows the power tree. Moreover, this figure also shows the default state of the jumpers and the solder bridges.

**Figure 7. NUCLEO-WB55RG power tree**



### 7.1.2 7 to 12 V power supply

NUCLEO-WB55RG can be powered with a 7 to 12 V DC power source. There are three accesses for this type of DC levels:

1. VIN CN6 pin 8 of the ARDUINO® connector. It is possible to apply until +12 V on this pin or use an ARDUINO® shield which can deliver this type of voltage on the VIN pin.
2. VIN CN7 pin 24 of the ST morpho connector. It is possible to apply until +12 V on this pin like for the ARDUINO® connection.
3. CN4 external input. In this case, pay attention to the setting of the jumpers and solder bridges which is very important. Refer to [Table 4](#).

These sources are connected to the U2 linear low drop voltage regulator. The 5 V output of this regulator is a potential source of 5V. Refer to [Section 7.1.3](#) for further details.

### 7.1.3 5 V power supply

NUCLEO-WB55RG can be powered with a 5 V DC power source. The 5 V can come from several connectors:

1. 5V\_USB\_STL connected to CN11 (default configuration for the supply of the board). This connector is dedicated to the access of ST-LINK/V2 and Virtual COM port and therefore can get supply from the host computer. It is also possible to connect a USB charger to this connector. In this case, the ST-LINK and the VCP cannot be accessible.
2. CN4 external input. In this case, pay attention to the setting of the jumpers and solder bridges which is very important. Refer to [Section 7.1.2](#) for more details.
3. 5V\_EXT CN7 pin 6 of ST morpho connector.
4. 7-12V input through the U2 voltage regulator. Refer to [Section 7.1.2](#) for further details.

The JP1 jumper selects the 5V source. [Table 4](#) shows the configuration versus the selected source.

Depending on the current needed by the devices connected to the USB port, and the board itself, power limitations can prevent the system from working as expected. The user must ensure that the NUCLEO-WB55RG is supplied with the correct power source depending on the current needed.

**Table 4. JP2 power supply selector description**

Jumper / Solder bridge	Setting	Configuration
JP1 5V supply source selector	<p>5V SOURCES</p> <p>5V EXT 5V VIN USB MCU USB STL</p> <p>2</p> <p>1</p> <p>JP1</p>	NUCLEO-WB55RG is supplied through CN7 pin 6 directly.
	<p>5V SOURCES</p> <p>5V EXT 5V VIN USB MCU USB STL</p> <p>2</p> <p>1</p> <p>JP1</p>	NUCLEO-WB55RG is supplied through the CN6 pin 8 (ARDUINO®) or CN7 pin 24 (ST morpho) or CN4 (Refer to configuration details in the present power supply section).
	<p>5V SOURCES</p> <p>5V EXT 5V VIN USB MCU USB STL</p> <p>2</p> <p>1</p> <p>JP1</p>	NUCLEO-WB55RG is supplied through the CN1 Micro-B USB receptacle (USB_USER)
	<p>5V SOURCES</p> <p>5V EXT 5V VIN USB MCU USB STL</p> <p>2</p> <p>1</p> <p>JP1</p>	<b>Default setting :</b> NUCLEO-WB55RG is supplied through the CN15 Micro-B USB receptacle (USB ST-LINK)

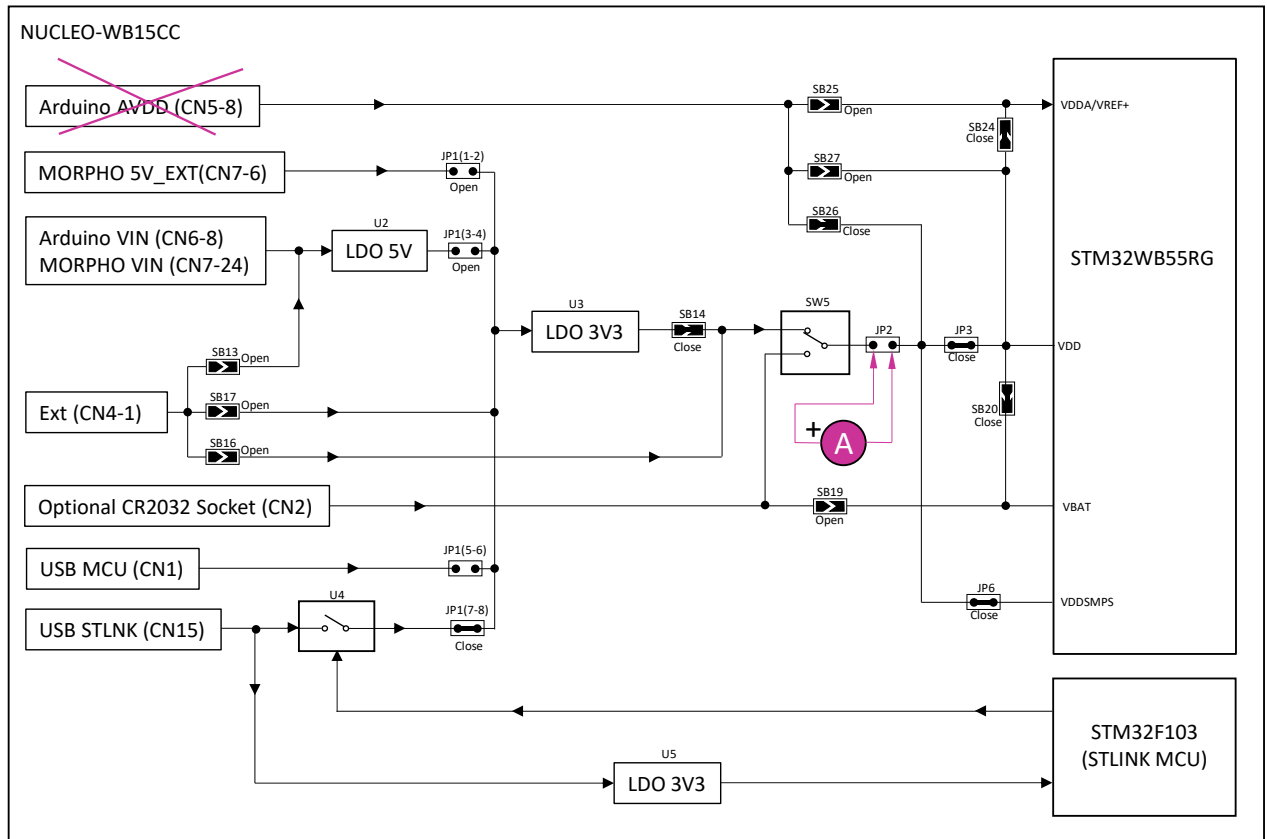
When 5V\_USB\_STLINK is used, JP1 is set on [7-8]. The sequence is specific. In the beginning, only STM32F103 is supplied. If the USB enumeration succeeds, the 5V\_USB\_STLNK power is enabled by asserting the PWR\_ENn signal from STM32F103CBT6. This pin is connected to a TPS2041C power switch which supplies the rest of the board. This power switch also features a current limitation to protect the host PC in case of currents exceeding 300 mA.

### 7.1.4 Current measurement

As the device has low power features, it can be interesting to measure the current consumed by NUCLEO-WB55RG. To easily do this measurement, there are two possibilities:

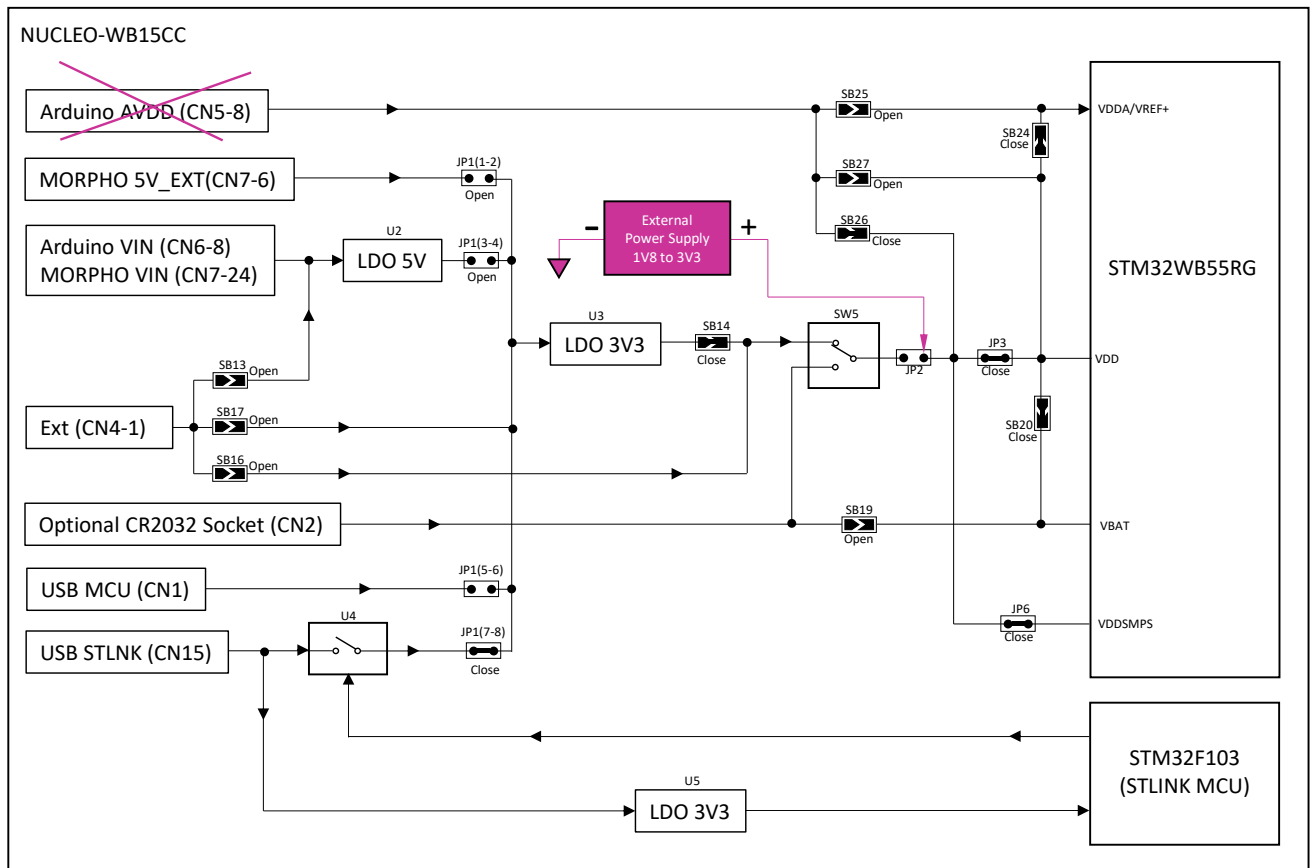
1. Measure the supply current of the SoC using an ammeter in place of the JP1 jumper. In this case, all supply sources can be used except the AVDD coming from the ARDUINO® connector. Figure 8 shows the configuration.

**Figure 8. Current measurement with an ammeter**



2. Use an external power supply with current measurement capabilities. In this case, the JP2 jumper must be removed, and the supply connected to JP2 pin 2, as shown in Figure 9. The supply voltage must be between 1.8 and 3.3 V. AVDD input (CN1 pin 8) must not be used during this measurement.

Figure 9. Current measurement with an external power supply



## 7.2 Clock sources

### 7.2.1 HSE clock reference

The accuracy of the HSE high-speed clock of the SoC is committed to a 32 MHz crystal oscillator. The HSE oscillator is trimmed during board manufacturing.

### 7.2.2 LSE clock reference

The accuracy of the LSE low-speed clock of the SoC is committed to a 32.768 kHz crystal oscillator.

## 7.3 Reset sources

The NUCLEO-WB55RG reset signal is active LOW. The internal pull-up resistor forces the RST signal to a high level.

The sources of reset are:

- B4 reset push button
- Embedded ST-LINK/V2-1
- CN2 ARDUINO® connector pin 3 (ARDUINO® board reset).
- CN7 ST morpho connector pin 14

## 7.4 Embedded ST-LINK/V2-1

The ST-LINK/V2-1 programming and debugging tool is integrated into the NUCLEO-WB55RG Nucleo-64 board. For information about debugging and programming features, refer to the user manual *ST-LINK/V2 in-circuit debugger/programmer for STM8 and STM32 (UM1075)*, which describes in detail all the ST-LINK/V2 features.

The additional features supported on the ST-LINK/V2-1 are:

- USB software re-enumeration
- Virtual COM port interface on USB
- Mass storage interface on USB
- USB power management request for more than 100 mA power on USB (limited to 300 mA for this board)

The following features are no more supported on the ST-LINK/V2-1:

- Application voltage lower than 3 V

### 7.4.1 Drivers

The ST-LINK/V2-1 requires a dedicated USB driver, which, for Windows 7® and Windows 8®, is found at [www.st.com](http://www.st.com). For Windows 10®, it is not necessary to install the driver, as the ST-LINK is automatically identified.

In case the NUCLEO-WB55RG Nucleo-64 board is connected to the PC before the driver is installed, some board interfaces may be declared as “Unknown” in the PC device manager. In this case, the user must install the dedicated driver files, and update the driver of the connected device from the device manager as shown in Figure 10.

*Note:* Prefer using the “USB Composite Device” handle for a full recovery.

Figure 10. USB composite device



### 7.4.2 ST-LINK/V2-1 firmware upgrade

The ST-LINK/V2-1 embeds a firmware upgrade mechanism for the in-situ upgrade through the USB port. As the firmware may evolve during the lifetime of the ST-LINK/V2-1 product (for example new functionalities, bug fixes, support for new microcontroller families), it is recommended to visit the [www.st.com](http://www.st.com) website before starting to use the NUCLEO-WB55RG Nucleo-64 board and periodically, to stay up-to-date with the latest firmware version.

### 7.4.3 CN15 ST-LINK/V2-1 USB connector

The main function of this connector is the access to ST-LINK/V2-1 embedded on NUCLEO-WB55RG for programming and debugging purposes as explained above. It can supply the board (Refer to Section 7.1 Power supply).



The connector is a standard USB Micro-B connector.

**Table 5. USB Micro-B connector CN15 (front view)**

Pin number	Pin name	Signal name	Functions
1	VBUS	5V_USB_ST_LINK	VBUS Power
2	DM	USB_STLK_N	DM
3	DP	USB_STLK_P	DP
4	ID	-	-
5	GND	GND	GND

#### 7.4.4 Virtual COM port: USART1

The STM32WB55RG handles a USB Full Speed peripheral, available on the CN1 USB Micro-B connector. It can communicate with a USB host as a USB device and can supply the board. The related pinout of the CN1 USB Micro-B connector is listed in Table 5.

**Table 5. USB Micro-B connector CN1(front view)**

Pin number	Pin name	Signal name	Functions
1	VBUS	5V_USB_ST_LINK	VBUS Power
2	DM	USB_STLK_N	DM
3	DP	USB_STLK_P	DP
4	ID	-	-
5	GND	GND	GND

#### 7.4.5 Virtual COM port: USART1

ST-LINK/V2-1 offers a USB Virtual COM port bridge. This feature gives access to the USART1 of the STM32WB55RG by the CN15 USB ST-LINK connector.

By default, this USART1 interface of STM32WB55RG is connected to the UART2 port of the ST-LINK/V2-1 MCU (STM32F103).

This VCP can be used differently with an intermediate connection. On the CN14 connector both TX and RX signals are available and two solder bridges can disconnect the UART coming from SoC.

**Table 6. UART interface pinout description**

Name	I/O	Wake-up available
USART1 RX (PA10/pin 36)	Pin 1	STLINK_TX: UART2 TX (PA2/pin 12)
USART1 TX (PA9/pin 18)	Pin 2	STLINK_RX: UART2 RX (PA3/pin 13)

#### 7.4.6 Level shifter

NUCLEO-WB55RG has a system to supply STM32WB55RG with a different voltage than ST-LINK. The ST-LINK is always supplied by 3.3 V sources. By default, STM32WB55RG is supplied by the same voltage value as ST-LINK, but it is possible to supply the SoC with another value. It accepts a voltage between 1.8 and 3.3 V trust to a level shifter. This specific component assures the voltage conversion between the ST-LINK and the SoC. It drives SWD and UART signals connected to VCP on ST-LINK.

### 7.4.7 JP5 multi-function jumper

The JP5 multi-function jumper can connect ST-LINK/V2-1 to STM32WB55RG. It is located between the level shifter and the SoC. It is referenced to the VDD domain (STM32WB55RG supply voltage domain).

Figure 11. Interconnection bloc diagram between STM32WB55RG and ST-LINK/V2-1

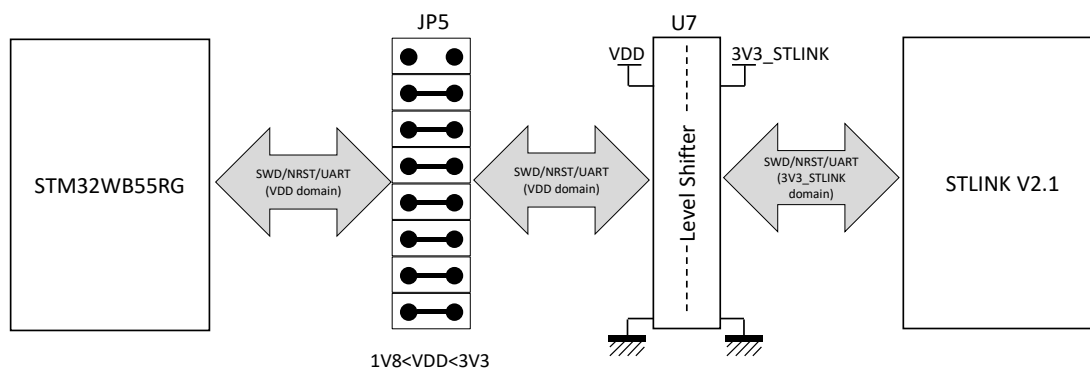


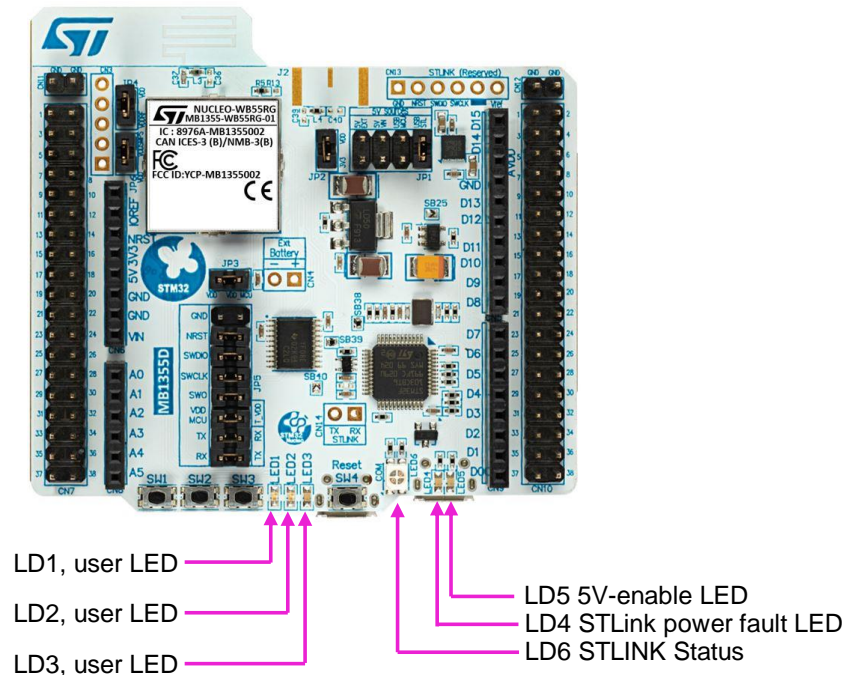
Table 7. Multi-function jumper pinout description

STM32WB55RG	JP5	STM32F103 (ST-LINK)
GND	1-2	GND
NRST (pin 7)	3-4	T_NRST (PB0/pin 18)
SWDIO (PA13/pin 39)	5-6	T_SWDIO (PB12-PB14/pin 25-pin 27)
SWCLK (PA14/pin 41)	7-8	T_SWCLK (PA5-PB13/pin 15-pin 26)
SWO (PB3/pin 43)	9-10	T_SWO (PA10/pin 31)
VDD	11-12	T_VDD
USART1 TX (PA9/pin 18)	13-14	STLINK_RX: UART2 RX (PA3/pin 13)
USART1 RX (PA10/pin 36)	15-16	STLINK_TX: UART2 TX (PA2/pin 12)

## 7.5 LEDs

Six LEDs on the top side of the Nucleo board help the user during the application development.

**Figure 12. LEDs location**



1. LD1: this blue LED is available for user application.
2. LD2: this green LED is available for user application.
3. LD3: this red LED is available for user application.
4. LD4: this LED turns red to indicate that the current distribution cannot be performed as expected when the board is supplied by USB\_STLINK.
5. LD5: this LED turns green when the 5V is available. To select the 5 V source, refer to [Section 7.1.3](#) for further details.
6. LD6 is a bi-color LED, which default status is red. It turns to green to indicate that communication is in progress between the host PC and ST-LINK/V2-1 with the following steps:
  - Slow blinking red and OFF: at power-on, before USB initialization
  - Fast blinking red and OFF: after the first correct communication between the host PC and ST-LINK/V2-1 (enumeration)
  - Red ON: when initialization between the host PC and ST-LINK/V2-1 is successfully finished.
  - Green ON: after successful target communication initialization
  - Blinking red and green: during communication with the target
  - Green ON: communication is successfully finished and OK.
  - Orange ON: communication failure.

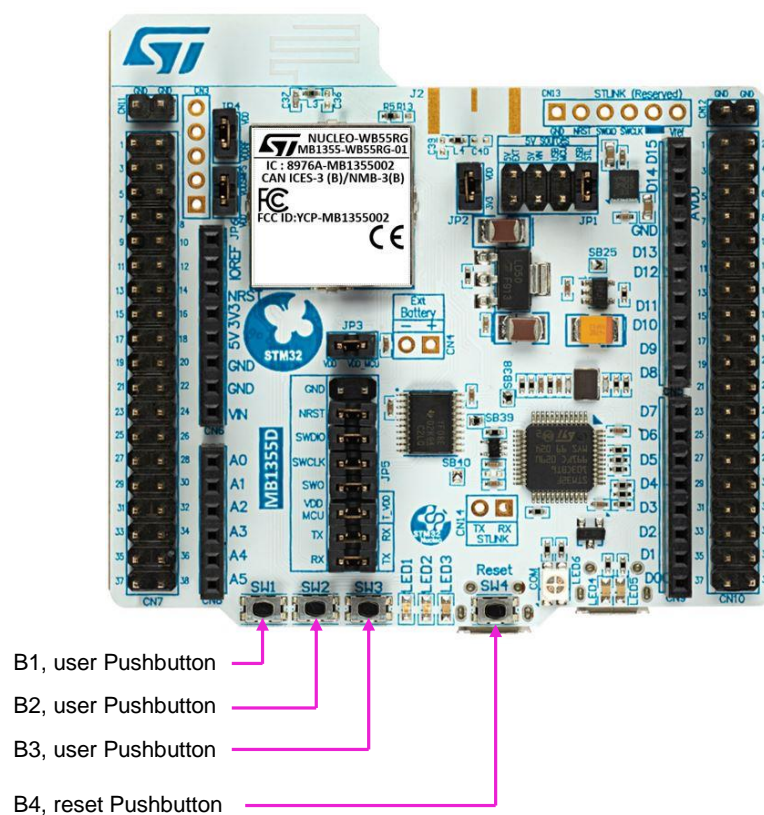
## 7.6 Push-buttons

### 7.6.1 Description

NUCLEO-WB55RG provides two types of buttons:

- B1 USER1 pushbutton
- B2 USER2 pushbutton
- B3 USER3 pushbutton
- B4 reset pushbutton to reset the NUCLEO-WB55RG board.

Figure 13. Push-buttons location



### 7.6.2 Reset push-button

B4 is dedicated to the hardware reset of the NUCLEO-WB55RG board.

### 7.6.3 User push-buttons

There are three push-buttons available for the user application. They are connected to PC4, PD0, and PD1. It is possible to use them for GPIO reading or to wake up the device (only B1).

Note that PA0 is also connected to ARDUINO® and ST morpho connectors as GPIO, depending on the use case that can generate conflict with B1. In this case, it is possible to remove the connection of B1 (SB11 OFF).

**Table 8. I/O configuration for the physical user interface**

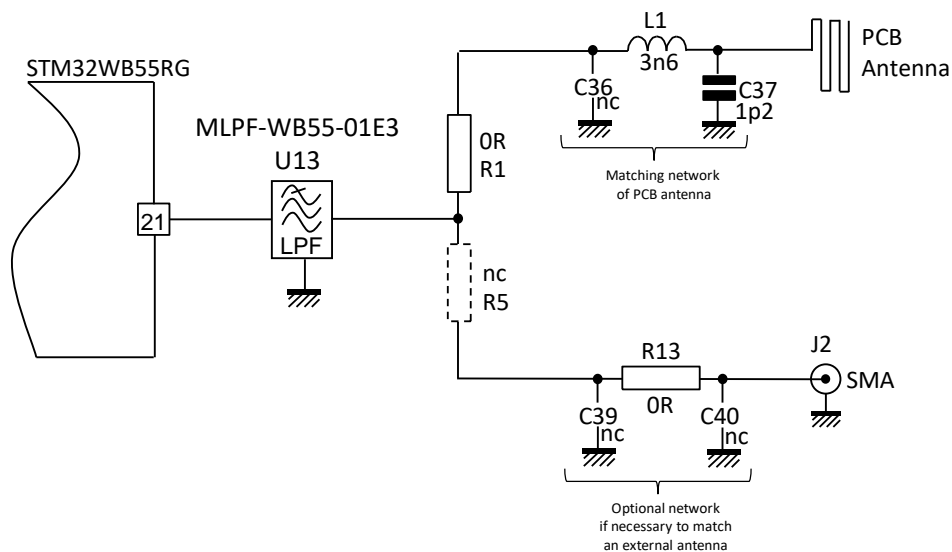
Name	I/O	Wake-up available
B1 USER1 push-button	PC4	WKUP1
B2 USER2 push-button	PD0	-
B3 USER3 push-button	PD1	-

## 7.7 RF I/O stage

The RF output stage is configured by default to use a PCB antenna. Nevertheless, for laboratory characterization, it is possible to use an SMA connector (not fitted by default).

Figure 14 shows the RF output stage schematic. On the I/O pin, a specific component manufactured by STMicroelectronics allows to match the pin to 50 Ω and embeds a low pass filter which allows satisfying the certification requirements.

**Figure 14. RF I/O stage**



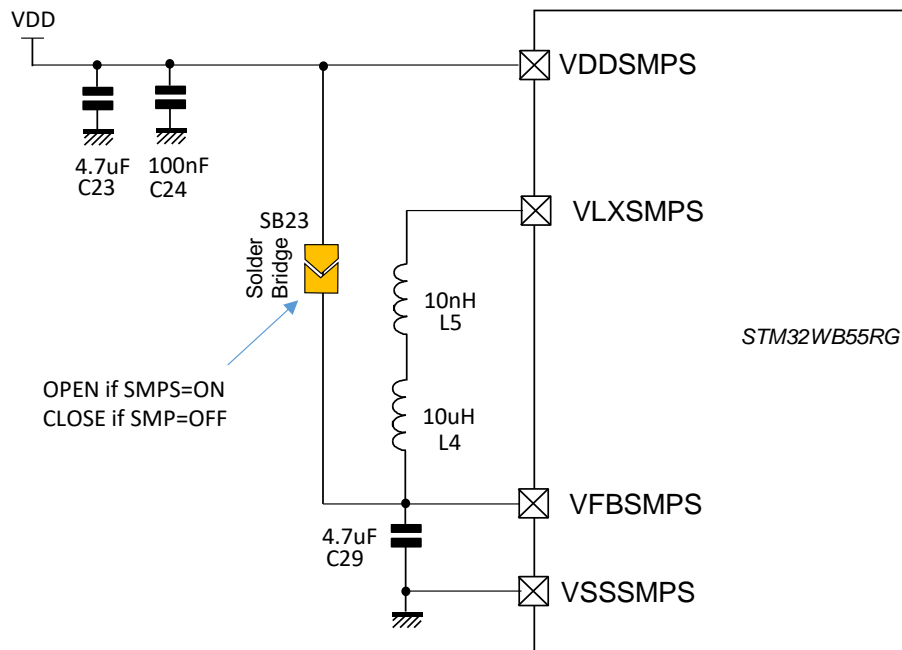
The components C36, L1, and C37 build the matching network of the PCB antenna. The footprint couple R1 and R5 allows switching the direction of the RF I/O. If R1 is ON (default), the PCB antenna is used. If the 0 Ω resistor presents on the R1 footprint is moved on the R5 footprint the SMA direction is used. C39, R13, and C40 are available footprints to build a matching network for an external antenna. By default, the connection to SMA is direct without matching network). R13 is 0 Ω resistor, C39 and C40 are OFF.

## 7.8 Embedded SMPS

NUCLEO-WB55RG embeds an SMPS to optimize the power consumption. All the details of this part are explained in the datasheet and the reference manual of the NUCLEO-WB55RG. NUCLEO-WB55RG allows the evaluation of the SoC with this SMPS active. All the components necessary for the operation are present.

Moreover, it is possible to bypass the SMPS. For that, it is first necessary to stop the SMPS by firmware (Refer to the SMPS section in the datasheet and user manual). And in a second time, it is possible to bypass the SMPS, for that it is necessary to close SB23.

Figure 15. SMPS part

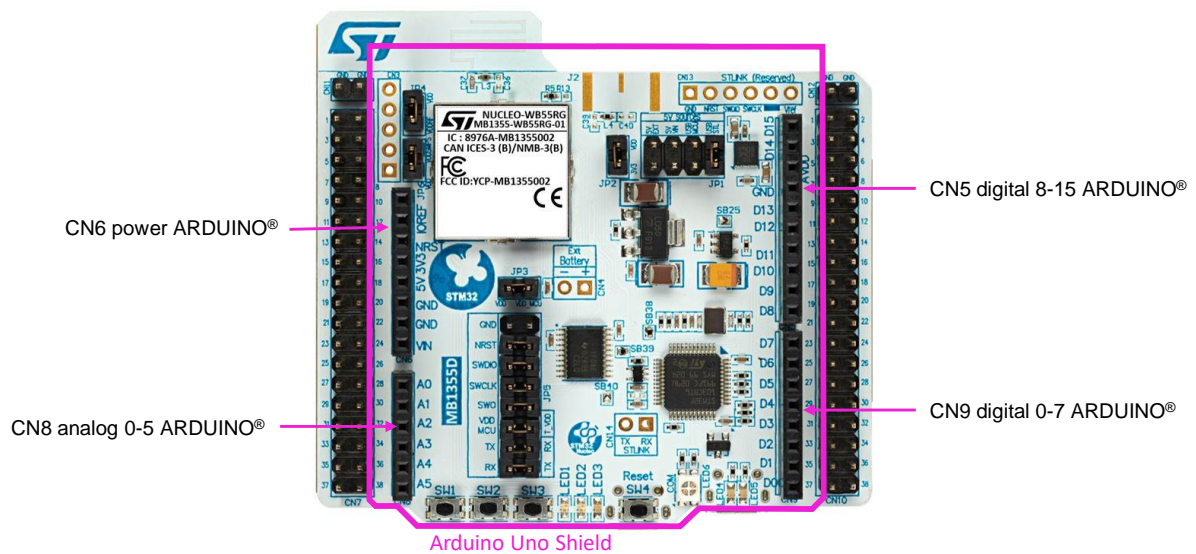


## 7.9 ARDUINO® connector

### 7.9.1 Description

On the bottom side of the board, there is an ARDUINO® Uno V3 extension socket. It is built around four standard CN5, CN6, CN8, and CN9 connectors. Most shields designed for ARDUINO® can fit with the development boards to offer flexibility in small form factor applications.

Figure 16. ARDUINO® Uno connectors and ARDUINO® shield location



### 7.9.2 Operating voltage

The ARDUINO® Uno V3 connector supports 5 V, 3.3 V, and VDD for I/O compatibility.

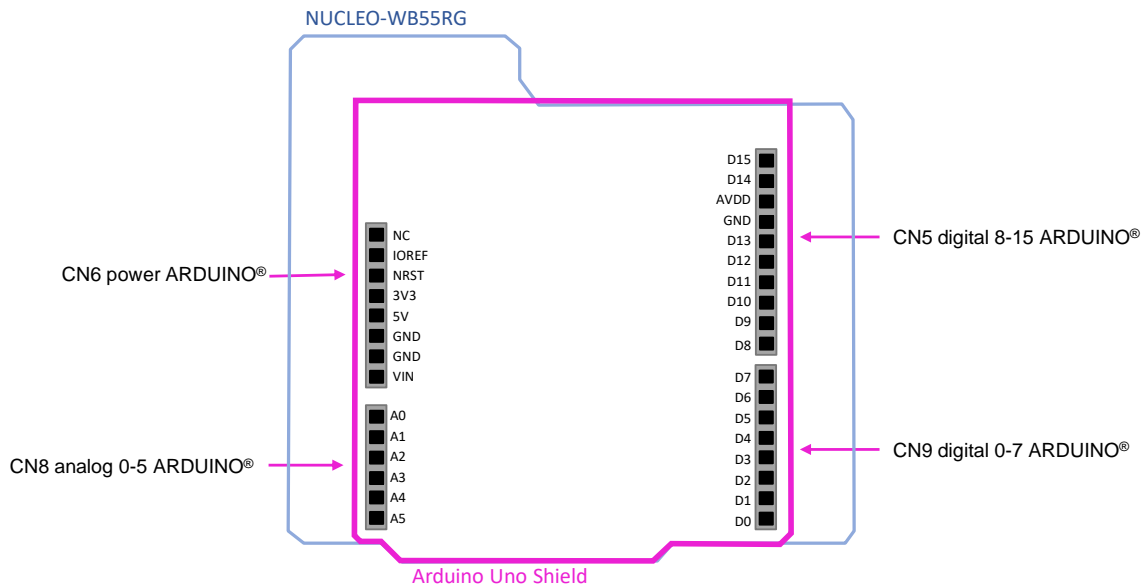
**Caution:** Do not supply 3.3 V or 5 V from the ARDUINO® shield. Supplying 3.3 V or 5 V from the ARDUINO® shield may damage the Nucleo board.

Furthermore, if it is necessary to supply the Nucleo board by the ARDUINO® connector, a dedicated pin is available. VIN can supply the board directly. Refer to [Section 7.1.2](#) for further details.

### 7.9.3 ARDUINO® interface and pinout

Figure 17 shows the position and pinout of the ARDUINO® shield when it is plugged on NUCLEO-WB55RG. The pinout showed on this figure corresponds to the standard ARDUINO® naming. To see the correspondence with the STM32, refer to Table 9.

Figure 17. ARDUINO® connector location and pinout





**Table 9. ARDUINO® connector pinout**

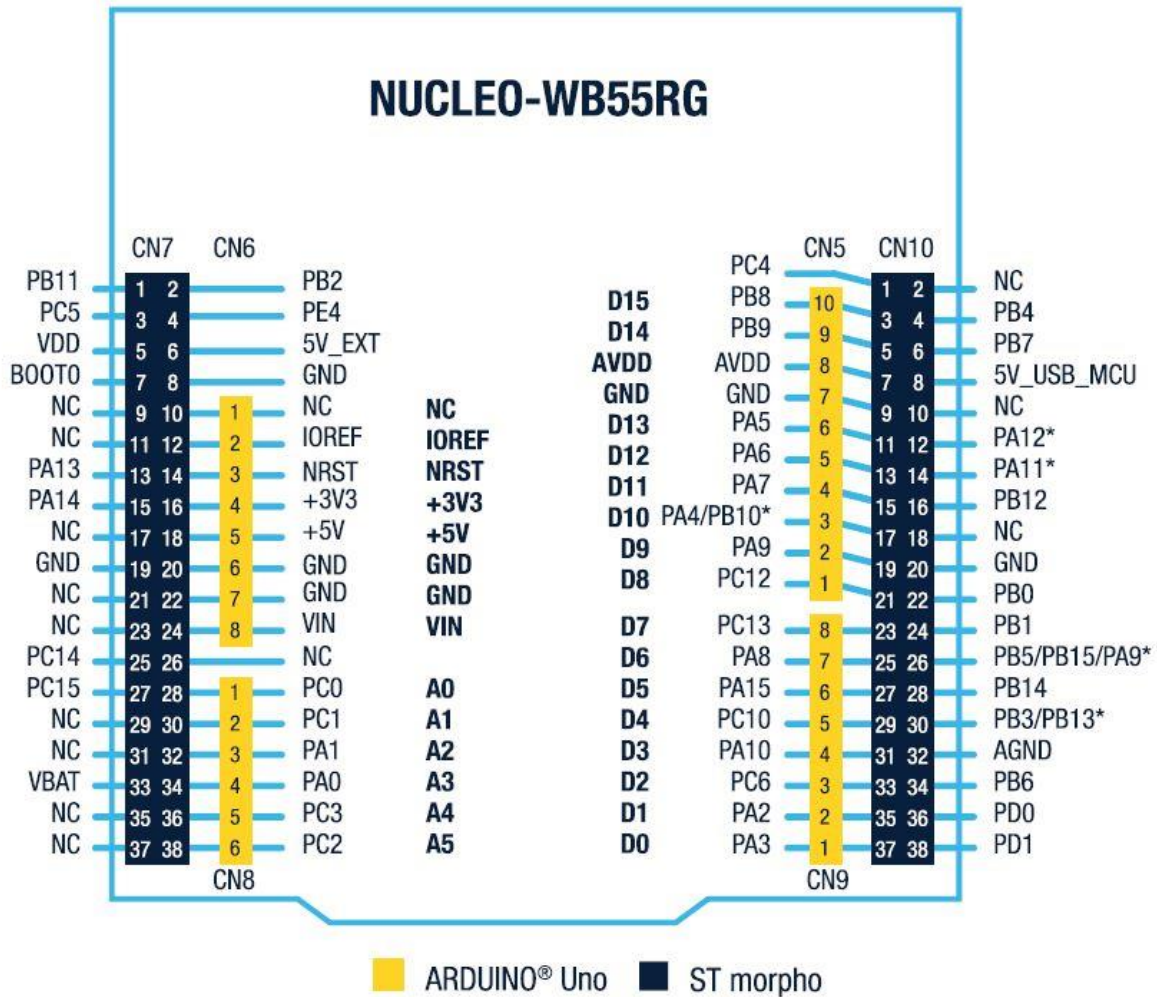
Connector	Pin number	Signal name	STM32 pin	Comment
CN6	1	-	-	Not connected (Reserved for the test)
	2	3V3 (IOREF)	-	IOREF 3.3 V
	3	NRST	NRST	NRST
	4	3V3	-	3.3 V
	5	5V	-	5 V
	6	GND	-	GND
	7	GND	-	GND
	8	VIN	-	External Supply Input (+12 V)
CN8	1	A0	PC0	ADC1_IN9
	2	A1	PC1	ADC1_IN11
	3	A2	PA1	ADC1_IN6
	4	A3	PA0	ADC1_IN5
	5	A4	PC3	ADC1_IN7
	6	A5	PC2	ADC1_IN8
CN9	1	RX/D0	PA3	USART1_RX
	2	TX/D1	PA2	USART1_TX
	3	D2	PC6	GPIO
	4	PWM/D3	PA10	GPIO
	5	D4	PC10	GPIO/LPTIM2_IN1
	6	PWM/D5	PA15	GPIO/TIM2_CH4
	7	PWM/D6	PA8	GPIO/TIM1_CH1
	8	D7	PC13	GPIO
CN5	1	ARD_D8	PC12	GPIO
	2	ARD_D9	PA9	GPIO/TIM2_CH1
	3	ARD_D10	PA4/PB10*	SPI1_NSS
	4	ARD_D11	PA7	SPI1_MOSI
	5	ARD_D12	PA6	SPI1_MISO
	6	ARD_D13	PA5	SPI1_SCK/TIM2_CH1
	7	GND	-	GND
	8	AVDD	-	VDDA
	9	ARD_D14	PB9	I2C1_SDA
	10	ARD_D15	PB8	I2C1_SCL

(\*) Require modifying solder bridge

### 7.9.4 NUCLEO-WB55RG I/O assignment

The CN7 and CN10 ST morpho connectors are male pin headers accessible on both sides of the board. All signals and power pins of the MCU are available on these ST morpho connectors. These connectors can also be probed by an oscilloscope, logical analyzer, or voltmeter.

Figure 18. Pinout of ARDUINO® and ST MORPHO connectors



**Table 10. ST morpho connectors pinout**

CN7				CN10			
Pin number	STM32WB55R pin name	Pin number	STM32WB55R pin name	Pin number	STM32WB55R pin name	Pin number	STM32WB55R pin name
1	PB11	2	PB2	1	PC4	2	-
3	PC5	4	PE4	3	PB8	4	PB4
5	VDD	6	5V_EXT	5	PB9	6	PB7
7	BOOT0	8	GND	7	AVDD	8	5V_USB_MCU
9	-	10	5V_INT (with 1 kΩ resistor)	9	GND	10	-
11	-	12	3V3	11	PA5	12	PA12
13	PA13	14	NRST	13	PA6	14	PA11
15	PA14	16	3V3	15	PA7/PA10*	16	PB12
17	-	18	5V	17	PA4/PB10*	18	-
19	GND	20	GND	19	PA9	20	GND
21	-	22	GND	21	PC12	22	PB0
23	-	24	VIN	23	PC13	24	PB1
25	PC14	26	-	25	PA8	26	PB15/PB5/PA9*
27	PC15	28	PC0	27	PA15	28	PB14
29	-	30	PC1	29	PC10	30	PB13/PB3*
31	-	32	PA1/PB6*	31	PA10	32	GND
33	VBAT	34	PA0	33	PC6	34	PB6
35	-	36	PC3	35	PA2/PC11*	36	PD0
37	-	38	PC2	37	PA3	38	PD1

(\*) Require modifying solder bridge

## 8 NUCLEO-WB55RG board information

### 8.1 Product marking

The stickers located on the top or bottom side of the PCB provide product information:

- Product order code and product identification for the first sticker
- Board reference with revision, and serial number for the second sticker

On the first sticker, the first line provides the product order code, and the second line the product identification.

On the second sticker, the first line has the following format: "MBxxx-Variant-yyz", where "MBxxx" is the board reference, "Variant" (optional) identifies the mounting variant when several exist, "y" is the PCB revision and "zz" is the assembly revision, for example B01. The second line shows the board serial number used for traceability.

Evaluation tools marked as "ES" or "E" are not yet qualified and therefore not ready to be used as reference design or in production. Any consequences deriving from such usage will not be at ST charge. In no event, ST will be liable for any customer usage of these engineering sample tools as reference designs or in production.

"E" or "ES" marking examples of location:

- On the targeted STM32 that is soldered on the board (For an illustration of STM32 marking, refer to the STM32 datasheet "Package information" paragraph at the [www.st.com](http://www.st.com) website).
- Next to the evaluation tool ordering part number that is stuck or silk-screen printed on the board.

Some boards feature a specific STM32 device version, which allows the operation of any bundled commercial stack/library available. This STM32 device shows a "U" marking option at the end of the standard part number and is not available for sales.

In order to use the same commercial stack in his application, a developer may need to purchase a part number specific to this stack/library. The price of those part numbers includes the stack/library royalties.

## 9 Federal Communication Commission (FCC)

Identification of products: NUCLEO-WB55RG.  
FCC ID: YCP-MB1355002

### Part 15.19

This device complies with Part 15 of the FCC Rules. Operation is subject to the following two conditions: (1) this device may not cause harmful interference, and (2) this device must accept any interference received, including interference that may cause undesired operation.

### Part 15.21

Any changes or modifications to this equipment not expressly approved by STMicroelectronics may cause harmful interference and void the user's authority to operate this equipment.

### Part 15.105

This equipment has been tested and found to comply with the limits for a Class B digital device, pursuant to part 15 of the FCC Rules. These limits are designed to provide reasonable protection against harmful interference in a residential installation. This equipment generates uses and can radiate radio frequency energy and, if not installed and used in accordance with the instruction, may cause harmful interference to radio communications. However, there is no guarantee that interference will not occur in a particular installation. If this equipment does cause harmful interference to radio or television reception which can be determined by turning the equipment off and on, the user is encouraged to try to correct interference by one or more of the following measures:

- Reorient or relocate the receiving antenna.
- Increase the separation between the equipment and receiver.
- Connect the equipment into an outlet on circuit different from that to which the receiver is connected.
- Consult the dealer or an experienced radio/TV technician for help.

This device complies with FCC RF radiation exposure limits set forth for general population. This device must be installed to provide a separation distance of at least 20 cm from all persons and must not be co-located or operating in conjunction with any other antenna or transmitter.

### Responsible party (in the USA)

Terry Blanchard  
Americas Region Legal | Group Vice President and Regional Legal Counsel, The Americas  
STMicroelectronics, Inc.  
750 Canyon Drive | Suite 300 | Coppel, Texas 75019  
USA  
Telephone: +1 972-466-7845

## 10 Innovation, Science and Economic Development Canada (ISED) Compliance Statements

This radio transmitter (8976A-MB1355002) has been approved by Industry Canada to operate with the antenna types listed below with the maximum permissible gain and required antenna impedance for each antenna type indicated. Antenna types not included in this list, having a gain greater than the maximum gain indicated for that type, are strictly prohibited for use with this device.

Le présent émetteur radio (8976A- MB1355002) a été approuvé par Industrie Canada pour fonctionner avec les types d'antenne énumérés ci-dessous et ayant un gain admissible maximal et l'impédance requise pour chaque type d'antenne. Les types d'antenne non inclus dans cette liste, ou dont le gain est supérieur au gain maximal indiqué, sont strictement interdits pour l'exploitation de l'émetteur.

This device contains licence-exempt transmitter(s)/receiver(s) that comply with Innovation, Science and Economic Development Canada's licence-exempt RSS(s). Operation is subject to the following two conditions: this device may not cause interference, and This device must accept any interference, including interference that may cause undesired operation of the device.

L'émetteur/récepteur exempt de licence contenu dans le présent appareil est conforme aux CNR d'Innovation, Sciences et Développement économique Canada applicables aux appareils radio exempts de licence. L'exploitation est autorisée aux deux conditions suivantes : l'appareil ne doit pas produire de brouillage, et l'appareil doit accepter tout brouillage radioélectrique subi, même si le brouillage est susceptible d'en compromettre le fonctionnement.

This device complies with ISED radiation exposure limits set forth for general population. This device must be installed to provide a separation distance of at least 20cm from all persons and must not be co-located or operating in conjunction with any other antenna or transmitter.

Le présent appareil est conforme aux niveaux limites d'exigences d'exposition RF aux personnes définies par ISDE. L'appareil doit être installé afin d'offrir une distance de séparation d'au moins 20 cm avec les personnes et ne doit pas être installé à proximité ou être utilisé en conjonction avec une autre antenne ou un autre émetteur.

## 11 RED compliance statement

---

Déclaration de conformité CE simplifiée :

STMicroelectronics déclare que l'équipement radioélectrique du type " NUCLEO-WB55RG " est conforme à la directive 2014/53/UE.

Bande de fréquence utilisée en transmission et puissance maximale rayonnée dans cette bande :

- Bande de fréquence : 2400-2483.5 MHz (Bluetooth®)
- Puissance maximale : 4 mW p.i.r.e

Simplified EC compliance statement

Hereby, STMicroelectronics declares that the radio equipment type " NUCLEO-WB55RG " is in compliance with Directive 2014/53/EU.

Frequency range used in transmission and maximal radiated power in this range:

- Frequency range: 2400-2483.5 MHz (Bluetooth®)
- Maximal power: 4 mW e.i.r.p

---

## Revision history

**Table 11. Document revision history**

Date	Version	Changes
04-Mar-22	1	Initial release.



## Contents

<b>1</b>	<b>Features .....</b>	<b>2</b>
<b>2</b>	<b>Ordering information .....</b>	<b>3</b>
2.1	Codification .....	3
<b>3</b>	<b>Development environment.....</b>	<b>4</b>
3.1	System requirements .....	4
3.2	Development toolchains .....	4
3.3	Demonstration software.....	4
<b>4</b>	<b>Conventions.....</b>	<b>5</b>
<b>5</b>	<b>Safety recommendations .....</b>	<b>6</b>
5.1	Targeted audience .....	6
5.2	Handling the board .....	6
<b>6</b>	<b>Quick start.....</b>	<b>7</b>
6.1	Getting started .....	7
<b>7</b>	<b>Hardware layout and configuration .....</b>	<b>8</b>
7.1	Power supply.....	12
7.1.1	General description.....	12
7.1.2	7 to 12 V power supply.....	12
7.1.3	5 V power supply.....	13
7.1.4	Current measurement .....	14
7.2	Clock sources.....	15
7.2.1	HSE clock reference.....	15
7.2.2	LSE clock reference.....	15
7.3	Reset sources .....	15
7.4	Embedded ST-LINK/V2-1 .....	16
7.4.1	Drivers .....	16
7.4.2	ST-LINK/V2-1 firmware upgrade .....	16
7.4.3	CN15 ST-LINK/V2-1 USB connector .....	16
7.4.4	Virtual COM port: USART1 .....	17
7.4.5	Level shifter.....	17
7.4.6	JP5 multi-function jumper .....	17
7.5	LEDs.....	19
7.6	Push-buttons.....	20
7.6.1	Description .....	20
7.6.2	Reset push-button.....	20
7.6.3	User push-buttons.....	20

<b>7.7</b>	RF I/O stage .....	21
<b>7.8</b>	Embedded SMPS .....	22
<b>7.9</b>	ARDUINO® connector .....	23
<b>7.9.1</b>	Description .....	23
<b>7.9.2</b>	Operating voltage .....	23
<b>7.9.3</b>	ARDUINO® interface and pinout .....	24
<b>7.9.4</b>	NUCLEO-WB55RG I/O assignment .....	26
<b>8</b>	<b>NUCLEO-WB55RG board information .....</b>	<b>28</b>
<b>8.1</b>	Product marking .....	28
<b>8.2</b>	NUCLEO-WB55RG product history .....	28
<b>8.2.1</b>	Product identification NUWB55RG\$GU1 .....	28
<b>8.3</b>	Board revision history .....	28
<b>8.3.1</b>	Board MB1355 revision C01 .....	28
<b>9</b>	<b>Federal Communication Commission (FCC) .....</b>	<b>29</b>
<b>10</b>	<b>Innovation, Science and Economic Development Canada (ISED) Compliance Statements .....</b>	<b>30</b>
<b>11</b>	<b>RED compliance statement .....</b>	<b>31</b>
	<b>Revision history .....</b>	<b>32</b>
	<b>List of tables .....</b>	<b>35</b>
	<b>List of figures .....</b>	<b>36</b>

## List of tables

<b>Table 1.</b>	Ordering information.....	3
<b>Table 2.</b>	Codification explanation.....	3
<b>Table 3.</b>	ON/OFF convention.....	5
<b>Table 4.</b>	JP2 power supply selector description.....	13
<b>Table 5.</b>	USB Micro-B connector CN23 (front view).....	17
<b>Table 6.</b>	UART interface pinout description.....	17
<b>Table 7.</b>	Multi-function jumper pinout description.....	18
<b>Table 8.</b>	I/O configuration for the physical user interface.....	21
<b>Table 9.</b>	ARDUINO® connector pinout.....	25
<b>Table 10.</b>	ST morpho connectors pinout.....	27
<b>Table 11.</b>	Document revision history.....	32

## List of figures

<b>Figure 1.</b>	NUCLEO-WB55RG top view .....	1
<b>Figure 2.</b>	Hardware block diagram .....	8
<b>Figure 3.</b>	NUCLEO-WB55RG PCB top side .....	9
<b>Figure 4.</b>	NUCLEO-WB55RG PCB with details of the main part (SoC and RF) .....	9
<b>Figure 5.</b>	NUCLEO-WB55RG PCB bottom side .....	10
<b>Figure 6.</b>	NUCLEO-WB55RG mechanical dimensions (in millimeters) .....	11
<b>Figure 7.</b>	NUCLEO-WB55RG power tree .....	12
<b>Figure 8.</b>	Current measurement with an ammeter .....	14
<b>Figure 9.</b>	Current measurement with an external power supply .....	15
<b>Figure 10.</b>	USB composite device .....	16
<b>Figure 11.</b>	Interconnection bloc diagram between STM32WB55RG and ST-LINK/V2-1 .....	17
<b>Figure 12.</b>	LEDs location .....	19
<b>Figure 13.</b>	Push-buttons location .....	20
<b>Figure 14.</b>	RF I/O stage .....	21
<b>Figure 15.</b>	SMPS part .....	22
<b>Figure 16.</b>	ARDUINO® Uno connectors and ARDUINO® shield location .....	23
<b>Figure 17.</b>	ARDUINO® connector location and pinout .....	24
<b>Figure 18.</b>	Pinout of ARDUINO® and ST morpho connectors .....	26

**IMPORTANT NOTICE – PLEASE READ CAREFULLY**

STMicroelectronics NV and its subsidiaries (“ST”) reserve the right to make changes, corrections, enhancements, modifications, and improvements to ST products and/or to this document at any time without notice. Purchasers should obtain the latest relevant information on ST products before placing orders. ST products are sold pursuant to ST’s terms and conditions of sale in place at the time of order acknowledgement.

Purchasers are solely responsible for the choice, selection, and use of ST products and ST assumes no liability for application assistance or the design of Purchasers’ products.

No license, express or implied, to any intellectual property right is granted by ST herein.

Resale of ST products with provisions different from the information set forth herein shall void any warranty granted by ST for such product.

ST and the ST logo are trademarks of ST. For additional information about ST trademarks, please refer to [www.st.com/trademarks](http://www.st.com/trademarks). All other product or service names are the property of their respective owners.

Information in this document supersedes and replaces information previously supplied in any prior versions of this document.

© 2021 STMicroelectronics – All rights reserved