



FCC SAR

TEST REPORT

of

Mobile Phone

Model Name: shark32
 Trade Name: Lenovo
 Report No.: SZ10090063S01
 FCC ID.: YCNSHARK32

prepared for

Lenovo Mobile Communication Technology Ltd

No.999,Qishan North 2nd Road, Information & Optoelectronics Park, Torch Hi-tech
 Industry Development Zone, Xiamen, P.R.China

prepared by

Shenzhen Morlab Communications Technology Co., Ltd. Morlab Laboratory

Morlab Laboratory

3/F, Electronic Testing Building, Shahe Road, Xili,
 Nanshan District, Shenzhen, 518055 P. R. China

Tel: +86 755 86130398

Fax: +86 755 86130218



Bluetooth®

CTIA Authorized Test Lab

LAB CODE 20081223-00

NOTE: This test report can be duplicated completely for the legal use with the approval of the applicant, it shall not be reproduced except in full, without the written approval of Shenzhen Morlab Communications Technology Co., Ltd. Morlab Laboratory. Any objections should be raised to us within thirty workdays since the date of issue.

Contents

1. GENERAL INFORMATION.....	4
1.1. Notes	4
1.2. Organization item.....	4
1.3. Conclusion.....	4
2. TESTING LABORATORY	5
2.1. Identification of the Responsible Testing Laboratory.....	5
2.2. Identification of the Responsible Testing Location	5
2.3. Accreditation Certificate	5
2.4. List of Test Equipments	5
3. TECHNICAL INFORMATION	6
3.1. Identification of Applicant.....	6
3.2. Identification of Manufacturer	6
3.3. Equipment Under Test (EUT)	6
3.3.1. Photographs of the EUT	7
3.3.2. Identification of all used EUTs.....	7
3.4. Applied Reference Documents	7
3.5. Device Category and SAR Limits	7
3.6. Test Environment/Conditions	8
4. SPECIFIC ABSORPTION RATE (SAR)	9
4.1 Introduction	9
4.2 SAR Definition.....	9
5. SAR MEASUREMENT SETUP	10
5.1. The Measurement System	10
5.2. Probe.....	11
5.3. Phantom	13
5.4. Device Holder	13
6. TISSUE SIMULATING LIQUIDS.....	14
7. UNCERTAINTY ASSESSMENT	16
7.1. UNCERTAINTY EVALUATION FOR HANDSET SAR TEST	16

7.2. UNCERTAINTY FOR SYSTEM PERFORMANCE CHECK17

8. SAR MEASUREMENT EVALUATION19

8.1. System Setup.....19

8.2. Validation Results.....19

9. OPERATIONAL CONDITIONS DURING TEST20

9.1. Informations on the testing20

9.2. Body-worn Configurations.....21

9.3. Measurement procedure.....21

9.4. Description of interpolation/extrapolation scheme22

10. TEST RESULTS LIST23

ANNEX A ACCREDITATION CERTIFICATE.....25

ANNEX B PHOTOGRAPHS OF THE EUT26

ANNEX C GRAPH TEST RESULTS30

Change History		
Issue	Date	Reason for change
1.0	Sep. 25, 2010	First edition

1. General Information

1.1. Notes

The test results of this test report relate exclusively to the information specified in section 3.3. Shenzhen Morlab Communications Technology Co., Ltd. Morlab Laboratory Morlab Laboratory does not assume responsibility for any conclusions and generalizations drawn from the test results with regard to other specimens or samples of the type of the equipment represented by the identification. The test report may only be reproduced or published in full. Reproduction or publications of extracts from the test report requires the prior written approval of Shenzhen Morlab Communications Technology Co., Ltd. Morlab Laboratory Morlab Laboratory. The test report shall be invalid without all the signatures of testing the Project Manager, the Deputy Project Manager and the Test Lab Manager. Any objections must be raised to Morlab within 30 days since the date when the report is received. It will not be taken into consideration beyond this limit.

1.2. Organization item

Report No.:	SZ10090063S01
Date of Issue:	Sep. 25, 2010
Date of Tests:	Sep. 17, 2010 –Sep. 17, 2010
Responsible for Accreditation:	Shu Luan
Project Manager:	Li Lei
Deputy Project Manager:	Samuel Peng

1.3. Conclusion

Shenzhen Morlab Communications Technology Co., Ltd. Morlab Laboratory Morlab Laboratory has verified that all tests as listed in the section 10 of this report haven been performed succ essfully with the tested equipment.

 Samuel Peng Tested by (Responsible for the Test Report)		 Li Lei Reviewed by (Verification of the Test Report)
	 Shu Luan Approved by (Responsible Test Lab Manager)	

2. Testing Laboratory

2.1. Identification of the Responsible Testing Laboratory

Company Name: Shenzhen Morlab Communications Technology Co., Ltd.
 Morlab Laboratory
 Department: Morlab Laboratory
 Address: 3/F, Electronic Testing Building, Shahe Road, Nanshan District, Shenzhen, 518055 P. R. China
 Responsible Test Lab Manager: Mr. Shu Luan
 Telephone: +86 755 86130268
 Facsimile: +86 755 86130218

2.2. Identification of the Responsible Testing Location

Name: Shenzhen Morlab Communications Technology Co., Ltd.
 Morlab Laboratory Morlab Laboratory
 Address: 3/F, Electronic Testing Building, Shahe Road, Nanshan District, Shenzhen, 518055 P. R. China

2.3. Accreditation Certificate

Accredited Testing Laboratory: No. CNAS L1659

2.4. List of Test Equipments

No.	Instrument	Type	Cal. Date	Cal. Due
1	PC	Dell (Pentium IV 2.4GHz, SN:X10-23533)		
2	Network Emulator	Rohde&Schwarz (CMU200, SN:105894)	2010-9-26	1year
3	Voltmeter	Keithley (2000, SN:1000572)	2010-9-24	1year
4	Synthesizer	Rohde&Schwarz (SML_03, SN:101868)	2010-9-24	1year
5	Amplifier	Nucl udes (ALB216, SN:10800)	2010-9-24	1year
6	Power Meter	Rohde&Schwarz (NRVD, SN:101066)	2010-9-24	1year
7	Probe	Antennessa (SN:SN_3708_EP80)	2010-9-24	1year
8	Phantom	Antennessa (SN:SN_36_08_SAM62)	2010-9-24	1year
9	Liquid	Antennessa (Last Calibration:21 08 08)	2010-8-21	1year

3. Technical Information

Note: the following data is based on the information by the applicant.

3.1. Identification of Applicant

Company Name: Lenovo Mobile Communication Technology Ltd
Address: No.999,Qishan North 2nd Road, Information & Optoelectronics Park,
Torch Hi-tech Industry Development Zone, Xiamen, PR.China

3.2. Identification of Manufacturer

Company Name: Lenovo Mobile Communication Technology Ltd
Address: No.999,Qishan North 2nd Road, Information & Optoelectronics Park,
Torch Hi-tech Industry Development Zone, Xiamen, PR.China

3.3. Equipment Under Test (EUT)

Brand Name: Lenovo
Type Name: Lenovo
Marking Name: shark32
Hardware Version: V1.0
Software Version: SHARK32_VEN_S004_100830
Frequency Bands: GSM 850MHz (channel 128:824.20MHz, channel 190:836.59MHz,
channel 251:848.29MHz)
PCS 1900MHz (channel 512:1850.19MHz, channel 661:1880.00MHz,
channel 810:1909.80MHz)
Modulation Mode: GSM / GPRS : GMSK
Multislot Class: GPRS: Multislot Class 10: EDGE:(n.a)
GPRS operation mode: Class B
Antenna type: Fixed Internal Antenna
Development Stage: Identical prototype
Battery Model: SLB-11
Battery specification: 1000mAh 3.7V

3.3.1. Photographs of the EUT

Please see for photographs of the EUT.

3.3.2. Identification of all used EUTs

The EUT Identity consists of numerical and letter characters (see the table below), the first five numerical characters indicates the Type of the EUT defined by Morlab, the next letter character indicates the test sample, and the following two numerical characters indicates the software version of the test sample.

EUT Identity	Hardware Version	Software Version
1#	V1.0	SHARK32_VEN_S004_100830

3.4. Applied Reference Documents

Leading reference documents for testing:

No.	Identity	Document Title
1	47 CFR § 2.1093	Radiofrequency Radiation Exposure Evaluation: Portable Devices
2	FCC OET Bulletin 65 (Edition 97-01), Supplement C (Edition 01-01)	Evaluating Compliance with FCC Guidelines for Human Exposure to Radiofrequency Electromagnetic Fields
3	ANSI C95.1-1999	IEEE Standard for Safety Levels with Respect to Human Exposure to Radio Frequency Electromagnetic Fields, 3kHz to 300 GHz
4	IEEE 1528-2003	Recommended Practice for Determining the Peak Spatial-Average Specific Absorption Rate(SAR) in the Human Body Due to Wireless Communications Devices: Experimental Techniques.

3.5. Device Category and SAR Limits

This device belongs to portable device category because its radiating structure is allowed to be used within 20 centimeters of the body of the user. Limit for General Population/Uncontrolled exposure should be applied for this device, it is 1.6 W/kg as averaged over any 1 gram of tissue.

3.6. Test Environment/Conditions

Normal Temperature (NT):	20 ... 25 °C
Relative Humidity:	30 ... 75 %
Air Pressure:	980 ... 1020 hPa
Details of Power Supply:	220V/50Hz AC
Extreme Temperature:	Low Temperature (LT) = -10°C
	High Temperature (HT) = 55°C
Extreme Voltage of the EUT:	Normal Voltage (NV) = 3.70V
	Low Voltage (LV) = 3.60V
	High Voltage (HV) = 4.20V
Test frequency:	GSM 850MHz
	PCS 1900MHz
Operation mode:	Call established
Power Level:	GSM 850 MHz Maximum output power(level 5)
	PCS 1900 MHz Maximum output power(level 0)

During SAR test, EUT is in Traffic Mode (Channel Allocated) at Normal Voltage Condition. A communication link is set up with a System Simulator (SS) by air link, and a call is established.

The Absolute Radio Frequency Channel Number (ARFCN) is allocated to 125, 190 and 251 respectively in the case of GSM 850 MHz, or to 512, 661 and 810 respectively in the case of PCS 1900 MHz, The EUT, The EUT is commanded to operate at maximum transmitting power.

The EUT shall use its internal transmitter. The antenna(s), battery and accessories shall be those specified by the manufacturer. The EUT battery must be fully charged and checked periodically during the test to ascertain uniform power output. If a wireless link is used, the antenna connected to the output of the base station simulator shall be placed at least 50 cm away from the handset.

The signal transmitted by the simulator to the antenna feeding point shall be lower than the output power level of the handset by at least 35 dB.

For SAR testing, EUT is in GPRS link mode, its crest factor is 4, because EUT is set in GPRS multi-slot class 10 with 2 uplink slots.

4. Specific Absorption Rate (SAR)

4.1 Introduction

SAR is related to the rate at which energy is absorbed per unit mass in an object exposed to a radio field. The SAR distribution in a biological body is complicated and is usually carried out by experimental techniques or numerical modeling. The standard recommends limits for two tiers of groups, occupational/controlled and general population/uncontrolled, based on a person's awareness and ability to exercise control over his or her exposure. In general, occupational/controlled exposure limits are higher than the limits for general population/uncontrolled.

4.2 SAR Definition

The SAR definition is the time derivative (rate) of the incremental energy (dW) absorbed by (dissipated in) an incremental mass (dm) contained in a volume element (dv) of a given density. ρ). The equation description is as below:

$$\text{SAR} = \frac{d}{dt} \left(\frac{dW}{dm} \right) = \frac{d}{dt} \left(\frac{dW}{\rho dv} \right)$$

SAR is expressed in units of Watts per kilogram (W/kg)

SAR measurement can be either related to the temperature elevation in tissue by

$$\text{SAR} = C \frac{\delta T}{\delta t}$$

, where C is the specific heat capacity, δT is the temperature rise and δt the exposure duration, or related to the electrical field in the tissue by

$$\text{SAR} = \frac{\sigma |E|^2}{\rho}$$

, where σ is the conductivity of the tissue, ρ is the mass density of the tissue and E is the rms electrical field strength.

However for evaluating SAR of low power transmitter, electrical field measurement is typically applied.

5. SAR Measurement Setup

5.1. The Measurement System

Comosar is a system that is able to determine the SAR distribution inside a phantom of human being according to different standards. The Comosar system consists of the following items:

- Main computer to control all the system
- 6 axis robot
- Data acquisition system
- Miniature E-field probe
- Phone holder
- Head simulating tissue

The following figure shows the system.



The EUT under test operating at the maximum power level is placed in the phone holder, under the phantom, which is filled with head simulating liquid. The E-Field probe measures the electric field inside the phantom. The OpenSAR software computes the results to give a SAR value in a 1g or 10g mass.

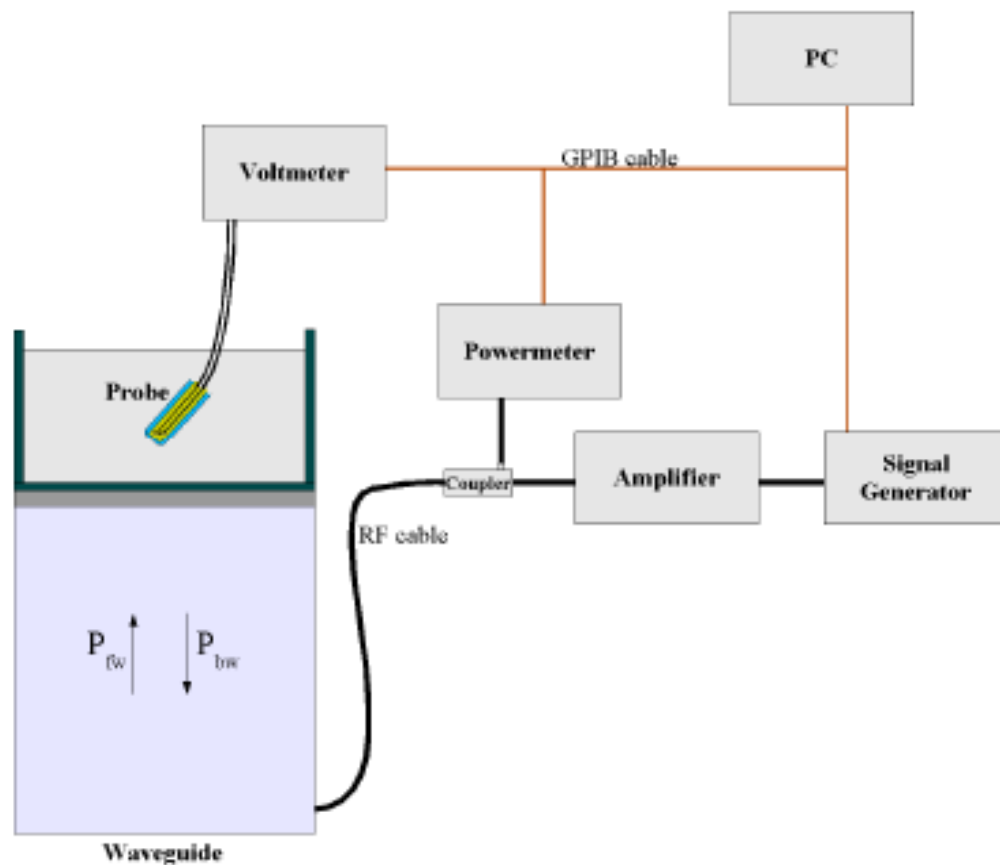
5.2. Probe

For the measurements the Specific Dosimetric E-Field Probe SSE5 with following specifications is used

- Dynamic range: 0.01-100 W/kg
- Tip Diameter : 5 mm
- Distance between probe tip and sensor center: 2.5mm
- Distance between sensor center and the inner phantom surface: 4 mm
(repeatability better than +/- 1mm)
- Probe linearity: <0.25 dB
- Axial Isotropy: <0.25 dB
- Spherical Isotropy: <0.25 dB
- Calibration range: 835to 2500MHz for head & body simulating liquid.

Angle between probe axis (evaluation axis) and surface normal line: less than 30°

Probe calibration is realized, in compliance with CENELEC EN 50361 and IEEE 1528 std, with CALISAR, Antenna proprietary calibration system. The calibration is performed with the EN 50361 annexe technique using reference guide at the five frequencies.



$$SAR = \frac{4(P_{fw} - P_{bw})}{ab\delta} \cos^2\left(\pi \frac{y}{a}\right) e^{-2z/\delta}$$

Where :

P_{fw} = Forward Power

P_{bw} = Backward Power

a and b = Waveguide dimensions

δ = Skin depth

Keithley configuration:

Rate = Medium; Filter =ON; RDGS=10; FILTER TYPE =MOVING AVERAGE; RANGE AUTO

After each calibration, a SAR measurement is performed on a validation dipole and compared with a NPL calibrated probe, to verify it.

The calibration factors, CF(N), for the 3 sensors corresponding to dipole 1, dipole 2 and dipole 3 are:

$$CF(N) = SAR(N) / V_{lin}(N) \quad (N=1,2,3)$$

The linearised output voltage V_{lin}(N) is obtained from the displayed output voltage V(N) using

$$V_{lin}(N) = V(N) * (1 + V(N) / DCP(N)) \quad (N=1,2,3)$$

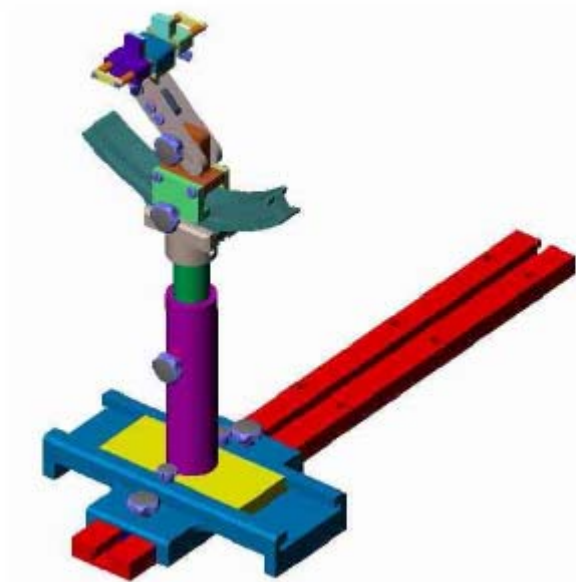
where DCP is the diode compression point in mV.

5.3. Phantom

For the measurements the Specific Anthropomorphic Mannequin (SAM) defined by the IEEE SCC-34/SC2 group is used. The phantom is a polyurethane shell integrated in a wooden table. The thickness of the phantom amounts to 2mm +/- 0.2mm. It enables the dosimetric evaluation of left and right phone usage and includes an additional flat phantom part for the simplified performance check. The phantom set-up includes a cover, which prevents the evaporation of the liquid.

5.4. Device Holder

The positioning system allows obtaining cheek and tilting position with a very good accuracy. In compliance with CENELEC, the tilt angle uncertainty is lower than 1°.



Device holder

System Material	Permittivity	Loss Tangent
Delrin	3.7	0.005

6. Tissue Simulating Liquids

Simulant liquids that are used for testing at frequencies of GSM 800MHz PCS 1900MHz, which are made mainly of sugar, salt and water solutions may be left in the phantoms. Approximately 20litres are needed for an upright head compared to about 25 litres for a horizontal bath phantom. The liquid height from the ear reference point (ERP) of the phantom to the liquid top surface is (head SAR) or from the flat phantom to the liquid top surface (body SAR) is 15 cm.

Table 6.1 gives the recipes for one liter of head and body tissue simulating liquid for frequency band 850MHz and 1900 MHz.

Ingredients (% by weight)	Frequency Band 835MHz		Frequency Band 1900MHz	
	Head	Body	Head	Body
Tissue Type				
Water	41.45	52.4	55.36	40.4
Salt(NaCl)	1.45	1.4	0.35	0.5
Sugar	56.0	45.0	30.45	58.0
HEC	1.0	1.0	0.0	1.0
Bactericide	0.1	0.1	0.0	0.1
Triton	0.0	0.0	0.0	0.0
DGBE	0.0	0.0	13.84	0.0
Acticide SPX	0.0	0.0	0.0	0.0
Dielectric Constant	42.45	56.1	41.00	54.0
Conductivity (S/m)	0.91	0.95	1.38	1.45

Recipes for Tissue Simulating Liquid

The dielectric parameters of the liquids were verified prior to the SAR evaluation using an Agilent 85033E Dielectric Probe Kit and an Agilent Network Analyzer.

Table 1: Dielectric Performance of Head Tissue Simulating Liquid

Temperature: 23.0~23.8°C, humidity: 54~60%.			
/	Frequency	Permittivity ϵ	Conductivity σ (S/m)
Target value	835 MHZ	41.5	0.90
Validation value (Sep. 17)	835 MHZ	40.669998	0.888655
Target value	1900 MHZ	40	1.40

Validation value (Sep. 17)	1900 MHz	38.509998	1.436111
-------------------------------	----------	-----------	----------

For body-worn measurements, the device was tested against flat phantom representing the user body. Under measurement phone was put on in the belt holder.

Table 2: Dielectric Performance of Body Tissue Simulating Liquid

Temperature: 23.0~23.8°C, humidity: 54~60%.			
/	Frequency	Permittivity ϵ	Conductivity σ (S/m)
Target value	835 MHz	55.2	0.97
Validation value (Sep. 17)	835 MHz	55.709999	1.009033
Target value	1900 MHz	53.3	1.52
Validation value (Sep. 17)	1900 MHz	51.540001	1.573978

7. Uncertainty Assessment

The following table includes the uncertainty table of the IEEE 1528. The values are determined by Antennessa.

7.1. UNCERTAINTY EVALUATION FOR HANDSET SAR TEST

a	b	c	d	e= f(d,k)	f	g	h= c*f/e	i= c*g/e	k
Uncertainty Component	Sec.	Tol (+-%)	Prob. Dist.	Div.	Ci (1g)	Ci (10g)	1g Ui (+-%)	10g Ui (+-%)	V i
Measurement System									
Probe calibration	E.2.1	7.0	N	1	1	1	7.00	7.00	
Axial Isotropy	E.2.2	2.5	R				1.02	1.02	
Hemispherical Isotropy	E.2.2	4.0	R				1.63	1.63	
Boundary effect	E.2.3	1.0	R		1	1	0.58	0.58	
Linearity	E.2.4	5.0	R		1	1	2.89	2.89	
System detection limits	E.2.5	1.0	R		1	1	0.58	0.58	
Readout Electronics	E.2.6	0.02	N	1	1	1	0.02	0.02	
Reponse Time	E.2.7	3.0	R		1	1	1.73	1.73	
Integration Time	E.2.8	2.0	R		1	1	1.15	1.15	
RF ambient Conditions	E.6.1	3.0	R		1	1	1.73	1.73	
Probe positioner Mechanical Tolerance	E.6.2	2.0	R		1	1	1.15	1.15	
Probe positioning with respect to Phantom Shell	E.6.3	0.05	R		1	1	0.03	0.03	
Extrapolation, interpolation and integration Algorithms for Max. SAR Evaluation	E.5.2	5.0	R		1	1	2.89	2.89	
Test sample Related									
Test sample positioning	E.4.2.1	0.03	N	1	1	1	0.03	0.03	N - 1
Device Holder Uncertainty	E.4.1.1	5.00	N	1	1	1	5.00	5.00	
Output power Power Drift - SAR drift measurement	6.6.2	4.04	R		1	1	2.33	2.33	
Phantom and Tissue Parameters									



Phantom Uncertainty (Shape and thickness tolerances)	E.3.1	0.05	R		1	1	0.03	0.03	
Liquid conductivity - deviation from target value	E.3.2	4.57	R		0.64	0.43	1.69	1.13	
Liquid conductivity - measurement uncertainty	E.3.3	5.00	N	1	0.64	0.43	3.20	2.15	M
Liquid permittivity - deviation from target value	E.3.2	3.69	R		0.6	0.49	1.28	1.04	
Liquid permittivity - measurement uncertainty	E.3.3	10.00	N	1	0.6	0.49	6.00	4.90	M
Combined Standard Uncertainty			RSS				11.23	10.70	
Expanded Uncertainty (95% Confidence interval)			k				21.91	20.86	

7.2. UNCERTAINTY FOR SYSTEM PERFORMANCE CHECK

a	b	c	d	e= f(d,k)	f	g	h= c*f/e	i= c*g/e	k
Uncertainty Component	Sec.	Tol (+-%)	Prob. Dist.	Div.	Ci (1g)	Ci (10g)	1g Ui (+-%)	10g Ui (+-%)	V i
Measurement System									
Probe calibration	E.2.1	7.0	N	1	1	1	7.00	7.00	
Axial Isotropy	E.2.2	2.5	R				1.02	1.02	
Hemispherical Isotropy	E.2.2	4.0	R				1.63	1.63	
Boundary effect	E.2.3	1.0	R		1	1	0.58	0.58	
Linearity	E.2.4	5.0	R		1	1	2.89	2.89	
System detection limits	E.2.5	1.0	R		1	1	0.58	0.58	
Readout Electronics	E.2.6	0.02	N	1	1	1	0.02	0.02	
Reponse Time	E.2.7	3.0	R		1	1	1.73	1.73	
Integration Time	E.2.8	2.0	R		1	1	1.15	1.15	
RF ambient Conditions	E.6.1	3.0	R		1	1	1.73	1.73	
Probe positioner Mechanical Tolerance	E.6.2	2.0	R		1	1	1.15	1.15	
Probe positioning with respect to Phantom Shell	E.6.3	0.05	R		1	1	0.03	0.03	
Extrapolation, interpolation and integration Algorithms for Max.	E.5.2	5.0	R		1	1	2.89	2.89	



SAR Evaluation									
Dipole									
Dipole axis to liquid Distance	8,E.4.2	1.00	N		1	1	0.58	0.58	N - 1
Input power and SAR drift measurement	8,6.6.2	4.04	R		1	1	2.33	2.33	
Phantom and Tissue Parameters									
Phantom Uncertainty (Shape and thickness tolerances)	E.3.1	0.05	R		1	1	0.03	0.03	
Liquid conductivity - deviation from target value	E.3.2	4.57	R		0.64	0.43	1.69	1.13	
Liquid conductivity - measurement uncertainty	E.3.3	5.00	N	1	0.64	0.43	3.20	2.15	M
Liquid permittivity - deviation from target value	E.3.2	3.69	R		0.6	0.49	1.28	1.04	
Liquid permittivity - measurement uncertainty	E.3.3	10.00	N	1	0.6	0.49	6.00	4.90	M
Combined Standard Uncertainty			RSS				10.08	9.47	
Expanded Uncertainty (95% Confidence interval)			k				19.65	18.47	

8. SAR Measurement Evaluation

8.1. System Setup

In the simplified setup for system evaluation, the DUT is replaced by a calibrated dipole and the power source is replaced by a continuous wave which comes from a signal generator at frequency 835 MHz and 1900 MHz. The calibrated dipole must be placed beneath the flat phantom section of the SAM twin phantom with the correct distance holder. The distance holder should touch the phantom surface with a light pressure at the reference marking and be oriented parallel to the long side of the phantom.

Equipments :

name	Type and specification
Signal generator	E4433B
Directional coupler	450MHz-3GHz
Amplifier	3W 502(10-2500MHz)
Reference dipole	835MHz:SN 36/08 DIPC 99 1800MHz:SN 36/08 DIPC 101

8.2. Validation Results

Comparing to the original SAR value provided by SPEAG, the validation data should be within its specification of 10 %.

Frequency	835MHz	1900MHz
Target value (1g)	9.5 W/Kg	38.1 W/Kg
250 mW input power	2.472 W/Kg (head)	9.846 W/Kg (head)
	2.441 W/Kg (body)	9.798 W/Kg (body)
Test value (1g)	9.888 W/Kg (head)	39.384 W/Kg (head)
	9.764 W/Kg (body)	39.192 W/Kg (body)

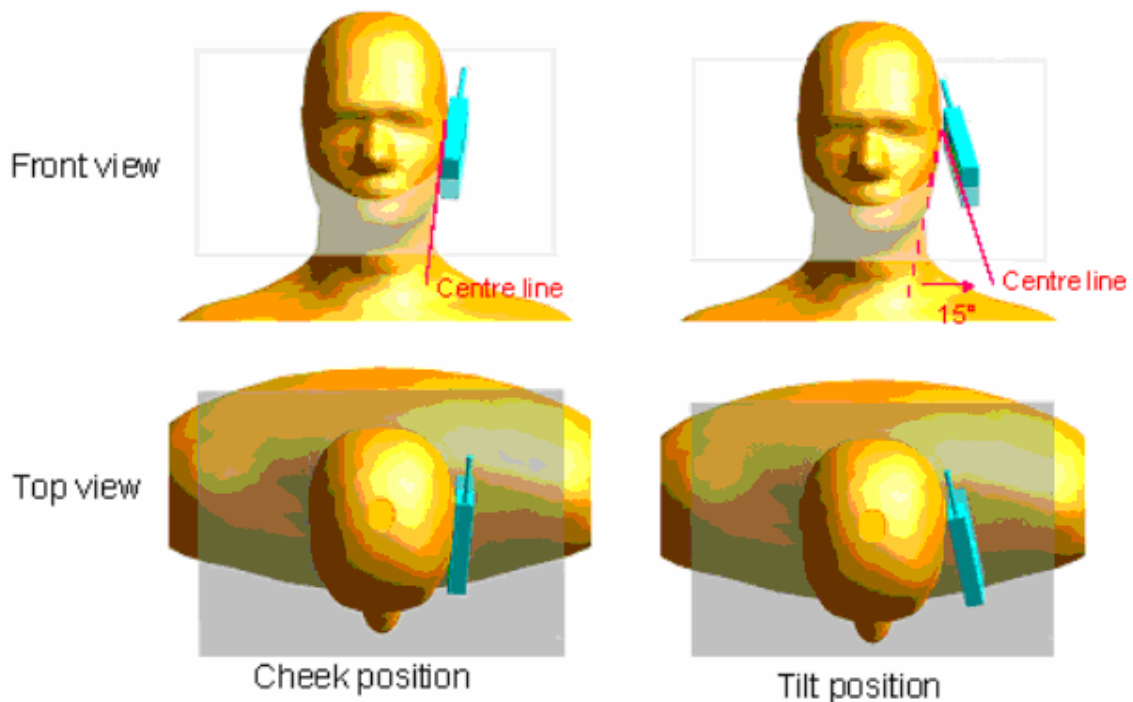
Note: System checks the specific test data please see page 78-89.

9. Operational Conditions During Test

9.1. Informations on the testing

The mobile phone antenna and battery are those specified by the manufacturer. The battery is fully charged before each measurement. The output power and frequency are controlled using a base station simulator. The mobile phone is set to transmit at its highest output peak power level.

The mobile phone is test in the “cheek” and “tilted” positions on the left and right sides of the phantom. The mobile phone is placed with the vertical centre line of the body of the mobile phone and the horizontal line crossing the centre of the earpiece in a plane parallel to the sagittal plane of the phantom.



Description of the “cheek” position:

The mobile phone is well placed in the reference plane and the earpiece is in contact with the ear. Then the mobile phone is moved until any point on the front side get in contact with the cheek of the phantom or until contact with the ear is lost.

Description of the “tilted” position:

The mobile phone is well placed in the “cheek” position as described above. Then the mobile phone is moved outward away from the mouth by an angle of 15 degrees or until contact with the ear lost.

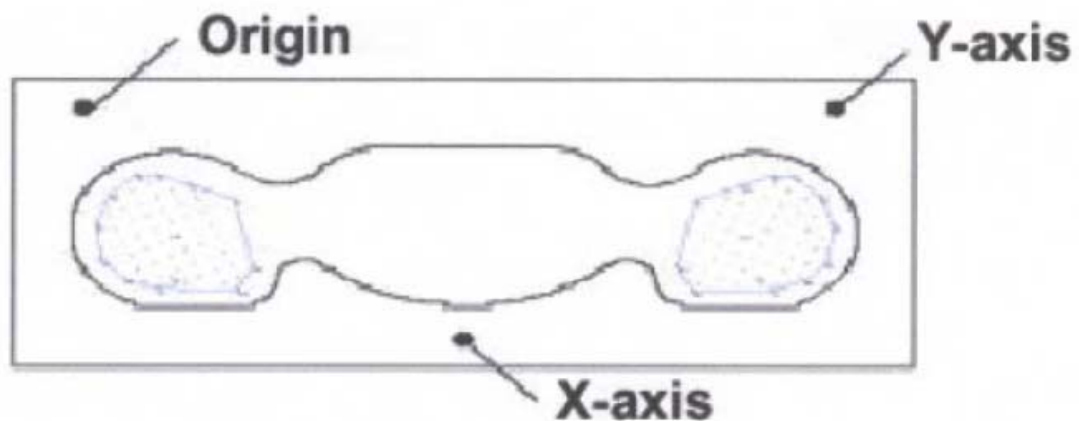
Remark: Please refer to Appendix B for the test setup photos.

9.2. Body-worn Configurations

The body-worn configurations shall be tested with the supplied accessories (belt-clips, holsters, etc.) attached to the device in normal use configuration.

The depth of the body tissue was 15.1cm. The distance between the back of the device and the bottom of the flat phantom is 1.5cm(taking into account of the IEEE 1528 and the place of the antenna)

For body-worn and other configurations a flat phantom shall be used which is comprised of material with electrical properties similar to the corresponding tissues.



SAR Measurement Points in Area Scan

9.3. Measurement procedure

The following steps are used for each test position

- Establish a call with the maximum output power with a base station simulator. The connection between the mobile and the base station simulator is established via air interface
- Measurement of the local E-field value at a fixed location. This value serves as a reference value for calculating a possible power drift.
- Measurement of the SAR distribution with a grid of 8 to 16mm * 8 to 16 mm and a constant distance to the inner surface of the phantom. Since the sensors can not directly measure at the inner phantom surface, the values between the sensors and the inner phantom surface are extrapolated. With these values the area of the maximum SAR is calculated by an interpolation scheme.
- Around this point, a cube of 30 * 30 * 30 mm or 32 * 32 * 32 mm is assessed by measuring 5 or 8 * 5 or 8*4 or 5 mm. With these data, the peak spatial-average SAR value can be calculated.

9.4. Description of interpolation/extrapolation scheme

The local SAR inside the phantom is measured using small dipole sensing elements inside a probe body. The probe tip must not be in contact with the phantom surface in order to minimize measurements errors, but the highest local SAR will occur at the surface of the phantom.

An extrapolation is using to determinate this highest local SAR values. The extrapolation is based on a fourth-order least-square polynomial fit of measured data. The local SAR value is then extrapolated from the liquid surface with a 1mm step.

The measurements have to be performed over a limited time (due to the duration of the battery) so the step of measurement is high. It could vary between 5 and 8 mm. To obtain an accurate assessment of the maximum SAR averaged over 10 grams and 1 gram requires a very fine resolution in the three dimensional scanned data array.

10. Test Results List

Summary of Measurement Results (GSM 850MHz Band)

SAR Values (GSM 850MHz Band), Measured against the head.

Temperature: 23.0~23.8°C, humidity: 54~60%.		
Limit of SAR (W/kg)	1 g Average	
	1.6	
Test Case	Measurement Result (W/kg)	
	1 g Average (W/kg)	Power level (dBm)
Right head, Touch cheek, Channel Middle	0.624	30.43
Right head, Tilt 15 Degree, Channel Middle	0.364	30.43
Left head, Touch cheek, Channel Middle	0.639	30.43
Left head, Tilt 15 Degree, Channel Middle	0.382	30.43

Summary of Measurement Results (GSM 1900MHz Band)

SAR Values (GSM 1900MHz Band), Measured against the head.

Temperature: 23.0~23.8°C, humidity: 54~60%.		
Limit of SAR (W/kg)	1 g Average	
	1.6	
Test Case	Measurement Result (W/kg)	
	1 g Average (W/kg)	Power level (dBm)
Right head, Touch cheek, Channel Middle	0.434	28.3
Right head, Tilt 15 Degree, Channel Middle	0.106	28.3
Left head, Touch cheek, Channel Middle	0.585	28.3
Left head, Tilt 15 Degree, Channel Middle	0.099	28.3

SAR Values (GSM 850MHz Band), Measured against the body.

Temperature: 23.0~23.8°C, humidity: 54~60%.		
Limit of SAR (W/kg)	1 g Average	
	1.6	
Test Case	Measurement Result (W/kg)	
	1 g Average (W/kg)	Power level (dBm)
Side, Middle frequency GPRS mode Back towards the phantom	0.778	30.5
Side, Middle frequency GPRS mode Keyboard towards the phantom	0.583	30.5

Side, Middle frequency GSM mode Back towards the phantom	0.413	30.43
Side, Middle frequency GSM mode Keyboard towards the phantom	0.348	30.43
Side, Middle frequency GSM mode Back towards the Phantom With Headphone	0.412	30.43

SAR Values (GSM 1900MHz Band), Measured against the body.

Temperature: 23.0~23.8°C, humidity: 54~60%.		
Limit of SAR (W/kg)	1 g Average	
	1.6	
Test Case	Measurement Result (W/kg)	
	1 g Average (W/kg)	Power level (dBm)
Side, Middle frequency GPRS mode Back towards the phantom	0.441	27.12
Side, Middle frequency GPRS mode Keyboard towards the phantom	0.368	27.12
Side, Middle frequency GSM mode Back towards the phantom	0.227	28.3
Side, Middle frequency GSM mode Keyboard towards the phantom	0.189	28.3
Side, Middle frequency GSM mode Back towards the Phantom With Headphone	0.221	28.3

1. Per KDB 447498, when the SAR procedures require multiple channels to be tested and the 1-g SAR for the highest output channel is less than 0.8 W/kg and peak SAR is less than 1.6W/kg, where the transmission band corresponding to all channels is ≤ 100 MHz, testing for the other channels is not required.
2. EUT with Bluetooth, but Bluetooth power is very low, so the test does not consider the Bluetooth status.

Annex A Accreditation Certificate

Annex B Photographs of the EUT

1 EUT Left Head Touch Cheek Position



2 EUT Left Head Tilt15 Position



3 EUT Right Head Touch Cheek Position



4 EUT Right Head Tilt15 Position



5 Side Position



6 With Headphone



Liquid Level Photo



Annex C Graph Test Results

	BAND	<u>PARAMETERS</u>
<u>TYPE</u>	GSM850	<p><u>Measurement 1:</u> Right Head with Cheek device position on Middle Channel in GSM mode</p> <p><u>Measurement 2:</u> Right Head with Tilt device position on Middle Channel in GSM mode</p> <p><u>Measurement 3:</u> Left Head with Cheek device position on Middle Channel in GSM mode</p> <p><u>Measurement 4:</u> Left Head with Tilt device position on Middle Channel in GSM mode</p> <p><u>Measurement 5:</u> Validation Plane with Body device position on Middle Channel in GPRS mode</p> <p><u>Measurement 6:</u> Validation Plane with Body device position on Middle Channel in GPRS mode</p> <p><u>Measurement 7:</u> Validation Plane with Body device position on Middle Channel in GSM mode</p> <p><u>Measurement 8:</u> Validation Plane with Body device position on Middle Channel in GSM mode</p> <p><u>Measurement 9:</u> Validation Plane with Body device position on Middle Channel in GSM mode (With Headphone)</p>
	GSM1900	<p><u>Measurement 10:</u> Right Head with Cheek device position on Middle Channel in GSM mode</p> <p><u>Measurement 11:</u> Right Head with Tilt device position on Middle Channel in GSM mode</p> <p><u>Measurement 12:</u> Left Head with Cheek device position on Middle Channel in GSM mode</p> <p><u>Measurement 13:</u> Left Head with Tilt device position on Middle Channel in GSM mode</p> <p><u>Measurement 14:</u> Validation Plane with Body device position on Middle Channel in GPRS mode</p> <p><u>Measurement 15:</u> Validation Plane with Body device position on Middle Channel in GPRS mode</p> <p><u>Measurement 16:</u> Validation Plane with Body device position on Middle Channel in GSM mode</p> <p><u>Measurement 17:</u> Validation Plane with Body device position on Middle Channel in GSM mode</p> <p><u>Measurement 18:</u> Validation Plane with Body device position on Middle Channel in GSM mode</p>



		(With Headphone)
--	--	------------------

MEASUREMENT 1

Type: Phone measurement (Complete)

Area scan resolution: dx=8mm,dy=8mm

Zoom scan resolution: dx=8mm, dy=8mm, dz=5mm

Date of measurement: 17/9/2010

Measurement duration: 7 minutes 50 seconds

A. Experimental conditions.

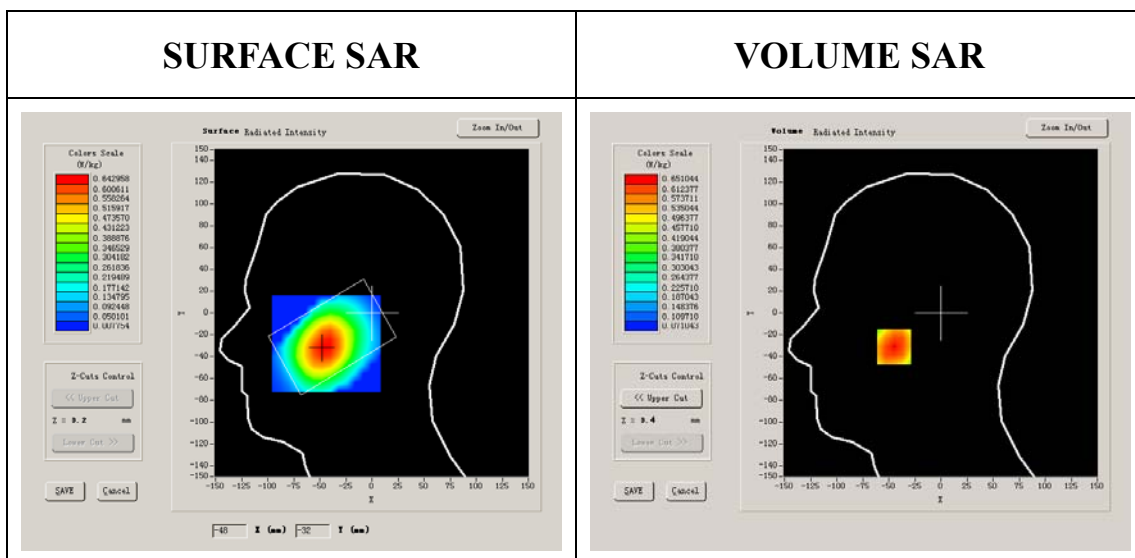
Phantom File	sam_direct_droit2_surf8mm.txt
Phantom	Right head
Device Position	Cheek
Band	GSM850
Channels	Middle
Signal	GSM

B. SAR Measurement Results

Middle Band SAR (Channel 190):

Frequency (MHz)	836.599976
Relative permittivity (real part)	40.669998
Relative permittivity	19.120001

Conductivity (S/m)	0.888655
Variation (%)	1.720000
Ambient Temperature:	22.3°C
Liquid Temperature:	22.2°C
ConvF:	28.479,25.214,27.196
Crest factor:	1:8



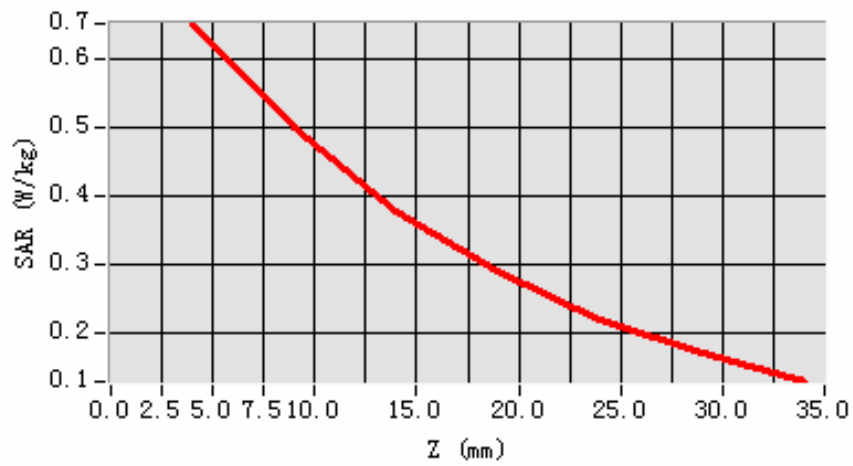
Maximum location: X=-45.00, Y=-31.00

SAR 10g (W/Kg)	0.452921
SAR 1g (W/Kg)	0.623566

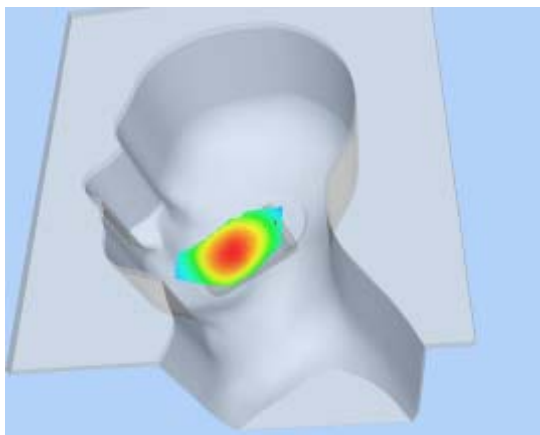
Z Axis Scan

Z (mm)	0.00	4.00	9.00	14.00	19.00	24.00	29.00
SAR (W/Kg)	0.0000	0.6510	0.5003	0.3766	0.2897	0.2181	0.1722

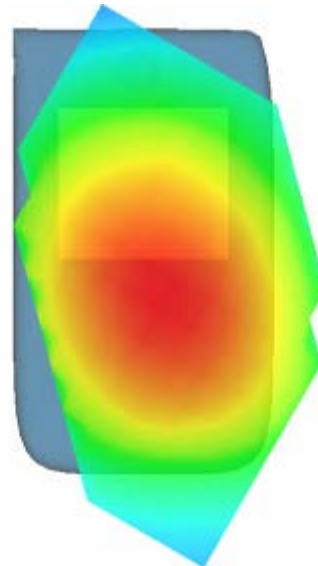
SAR, Z Axis Scan (X = -45, Y = -31)



3D scen shot



Hot spot position



MEASUREMENT 2

Type: Phone measurement (Complete)

Area scan resolution: dx=8mm,dy=8mm

Zoom scan resolution: dx=8mm, dy=8mm, dz=5mm

Date of measurement: 17/9/2010

Measurement duration: 7 minutes 38 seconds

A. Experimental conditions.

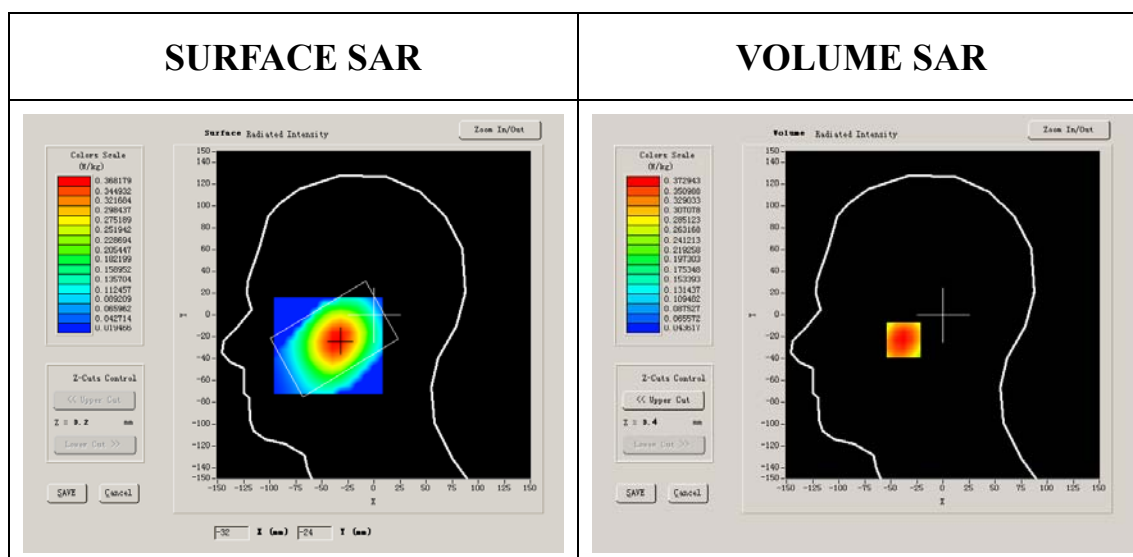
Phantom File	sam_direct_droit2_surf8mm.txt
Phantom	Right head
Device Position	Tilt
Band	GSM850
Channels	Middle
Signal	GSM

B. SAR Measurement Results

Middle Band SAR (Channel 190):

Frequency (MHz)	836.599976
Relative permittivity (real part)	40.669998
Relative permittivity	19.120001

Conductivity (S/m)	0.888655
Variation (%)	0.700000
Ambient Temperature:	22.3°C
Liquid Temperature:	22.2°C
ConvF:	28.479,25.214,27.196
Crest factor:	1:8



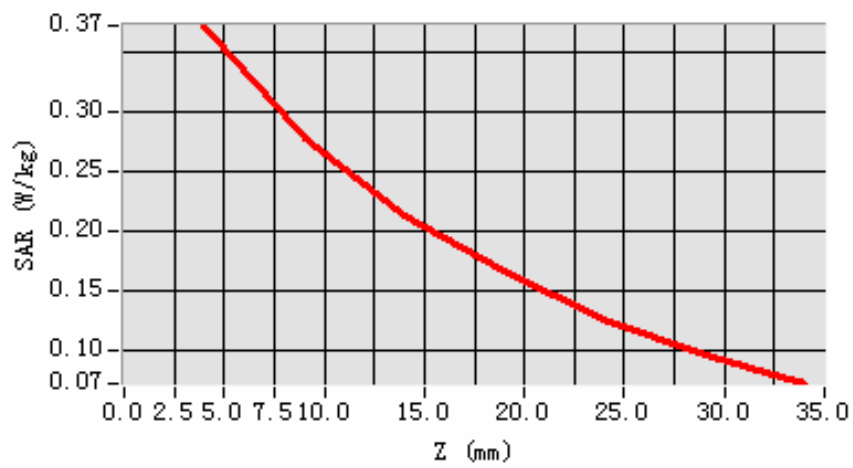
Maximum location: X=-34.00, Y=-23.00

SAR 10g (W/Kg)	0.261354
SAR 1g (W/Kg)	0.363936

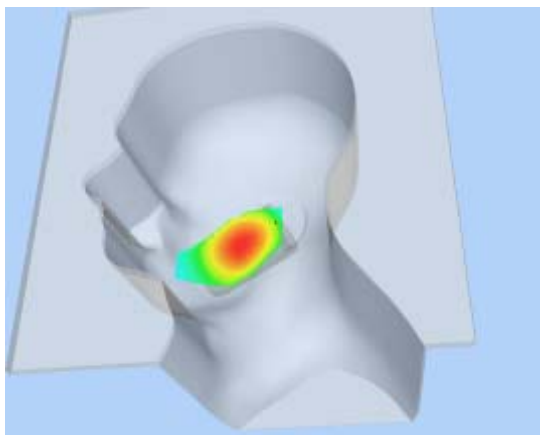
Z Axis Scan

Z (mm)	0.00	4.00	9.00	14.00	19.00	24.00	29.00
SAR (W/Kg)	0.0000	0.3729	0.2790	0.2132	0.1669	0.1270	0.0965

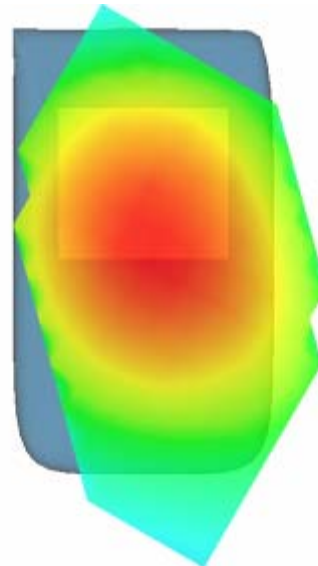
SAR, Z Axis Scan (X = -34, Y = -23)



3D scen shot



Hot spot position



MEASUREMENT 3

Type: Phone measurement (Complete)

Area scan resolution: dx=8mm,dy=8mm

Zoom scan resolution: dx=8mm, dy=8mm, dz=5mm

Date of measurement: 17/9/2010

Measurement duration: 7 minutes 38 seconds

A. Experimental conditions.

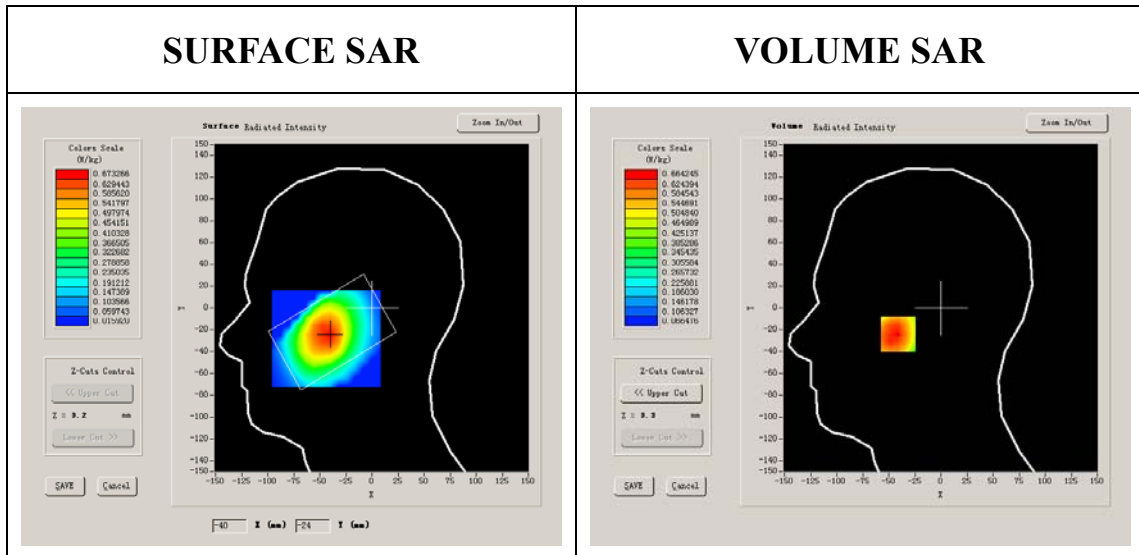
Phantom File	sam_direct_droit2_surf8mm.txt
Phantom	Left head
Device Position	Cheek
Band	GSM850
Channels	Middle
Signal	GSM

B. SAR Measurement Results

Middle Band SAR (Channel 190):

Frequency (MHz)	836.599976
Relative permittivity (real part)	40.669998
Relative permittivity	19.120001

Conductivity (S/m)	0.888655
Variation (%)	-1.340000
Ambient Temperature:	22.3°C
Liquid Temperature:	22.2°C
ConvF:	28.479,25.214,27.196
Crest factor:	1:8



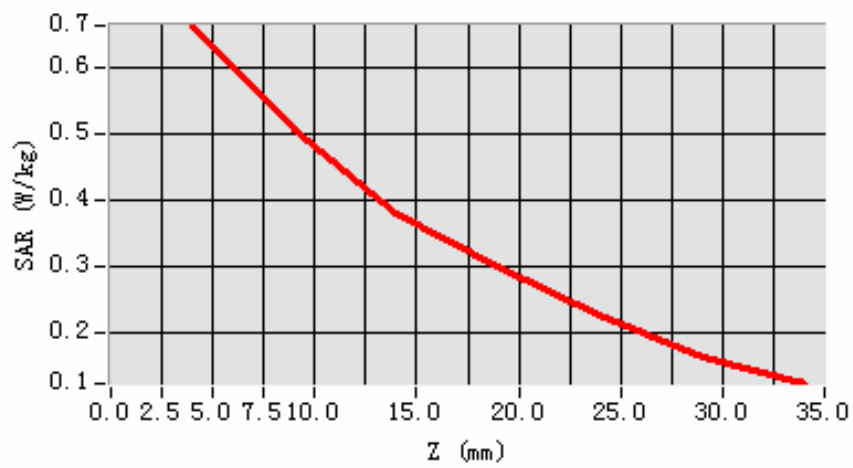
Maximum location: X=-41.00, Y=-24.00

SAR 10g (W/Kg)	0.461116
SAR 1g (W/Kg)	0.639246

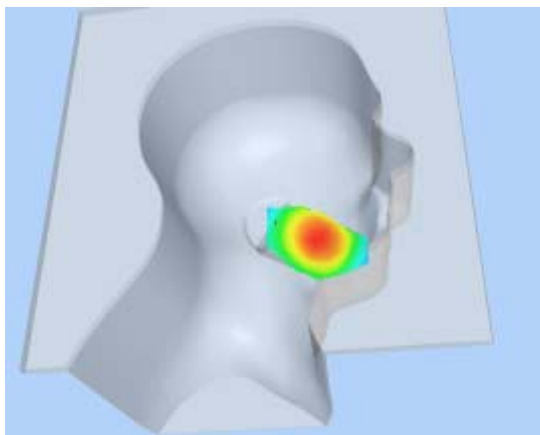
Z Axis Scan

Z (mm)	0.00	4.00	9.00	14.00	19.00	24.00	29.00
SAR (W/Kg)	0.0000	0.6642	0.5066	0.3812	0.2995	0.2266	0.1646

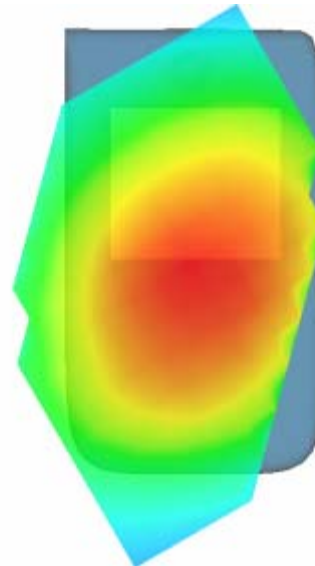
SAR, Z Axis Scan (X = -41, Y = -24)



3D scen shot



Hot spot position



MEASUREMENT 4

Type: Phone measurement (Complete)

Area scan resolution: dx=8mm,dy=8mm

Zoom scan resolution: dx=8mm, dy=8mm, dz=5mm

Date of measurement: 17/9/2010

Measurement duration: 7 minutes 33 seconds

A. Experimental conditions.

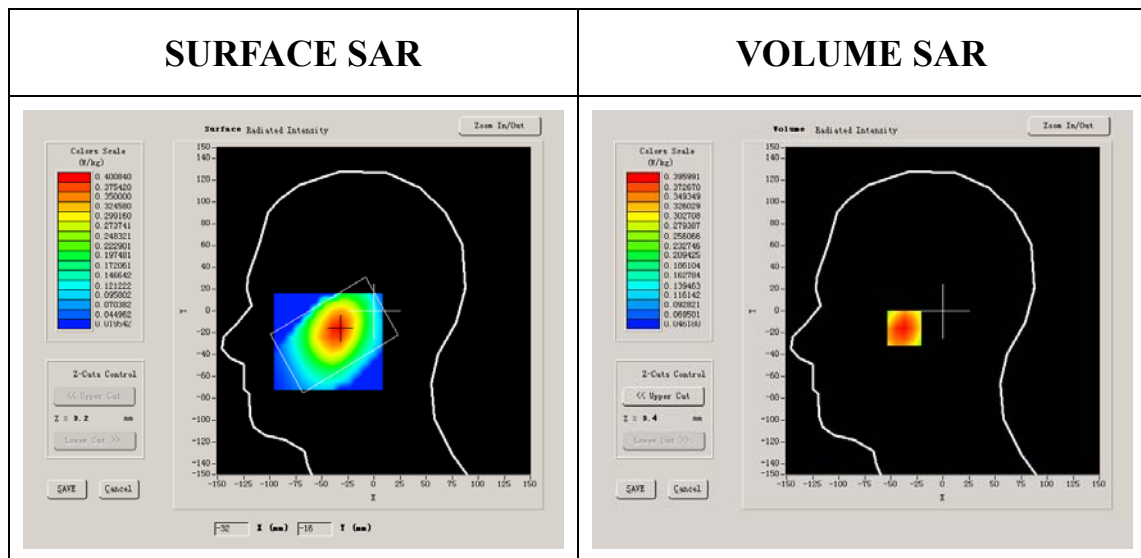
Phantom File	sam_direct_droit2_surf8mm.txt
Phantom	Left head
Device Position	Tilt
Band	GSM850
Channels	Middle
Signal	GSM

B. SAR Measurement Results

Middle Band SAR (Channel 190):

Frequency (MHz)	836.599976
Relative permittivity (real part)	40.669998
Relative permittivity	19.120001

Conductivity (S/m)	0.888655
Variation (%)	-1.610000
Ambient Temperature:	22.3°C
Liquid Temperature:	22.2°C
ConvF:	28.479,25.214,27.196
Crest factor:	1:8



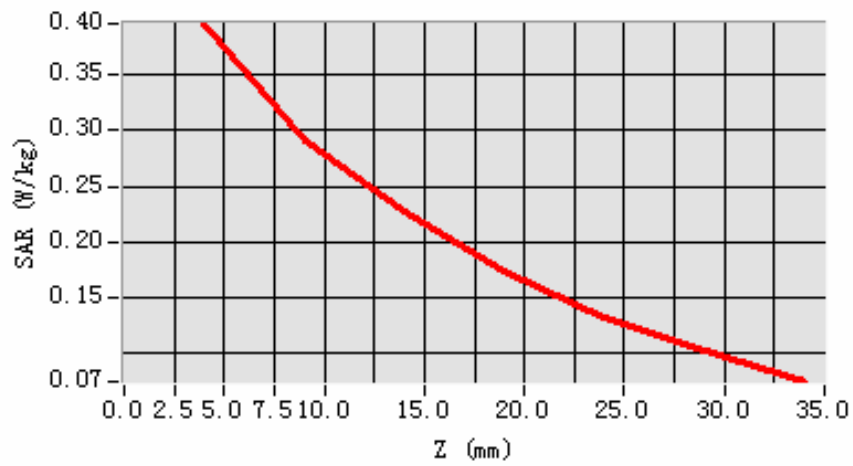
Maximum location: X=-34.00, Y=-16.00

SAR 10g (W/Kg)	0.272589
SAR 1g (W/Kg)	0.382451

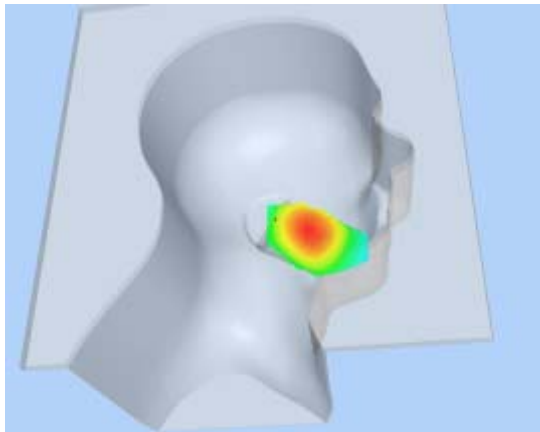
Z Axis Scan

Z (mm)	0.00	4.00	9.00	14.00	19.00	24.00	29.00
SAR (W/Kg)	0.0000	0.3960	0.2906	0.2271	0.1738	0.1317	0.1028

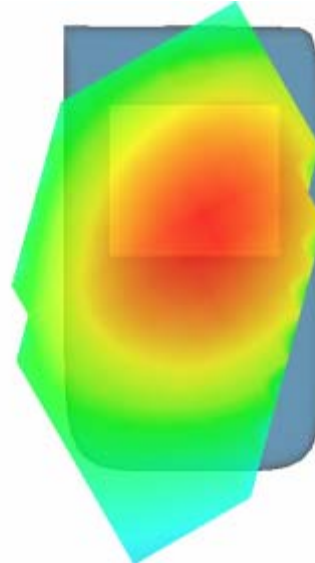
SAR, Z Axis Scan (X = -34, Y = -16)



3D scen shot



Hot spot position



MEASUREMENT 5

Type: Phone measurement (Complete)

Area scan resolution: dx=8mm,dy=8mm

Zoom scan resolution: dx=8mm, dy=8mm, dz=5mm

Date of measurement: 17/9/2010

Measurement duration: 9 minutes 5 seconds

A. Experimental conditions.

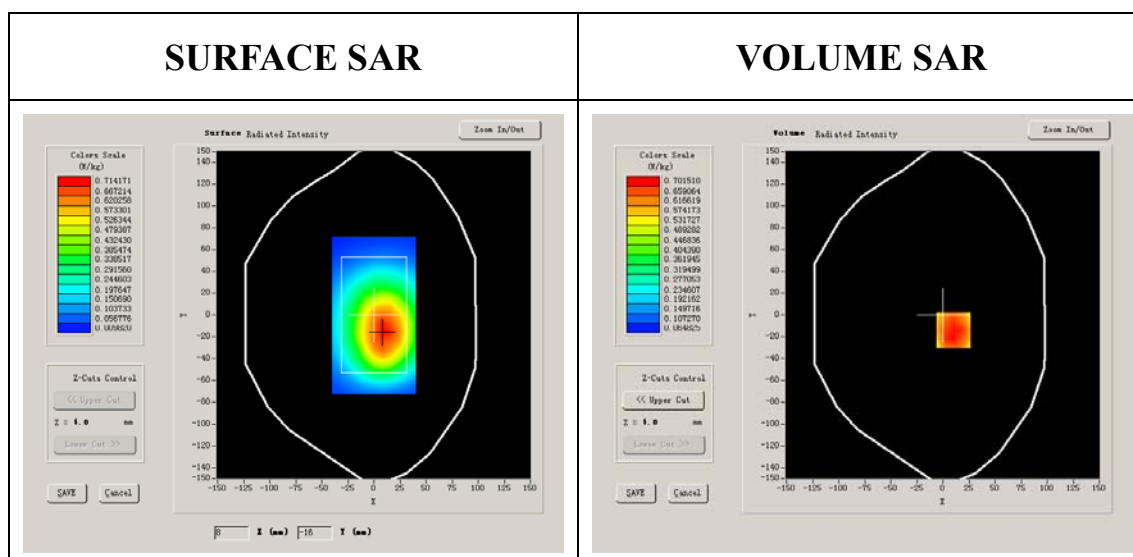
Phantom File	surf_sam_plan.txt
Phantom	Validation plane
Device Position	Body
Band	GSM850
Channels	Middle
Signal	GPRS

B. SAR Measurement Results

Middle Band SAR (Channel 190):

Frequency (MHz)	836.599976
Relative permittivity (real part)	55.709999
Relative permittivity	21.709999

Conductivity (S/m)	1.009033
Variation (%)	-0.760000
Ambient Temperature:	22.3°C
Liquid Temperature:	22.2°C
ConvF:	28.479,25.214,27.196
Crest factor:	1:4



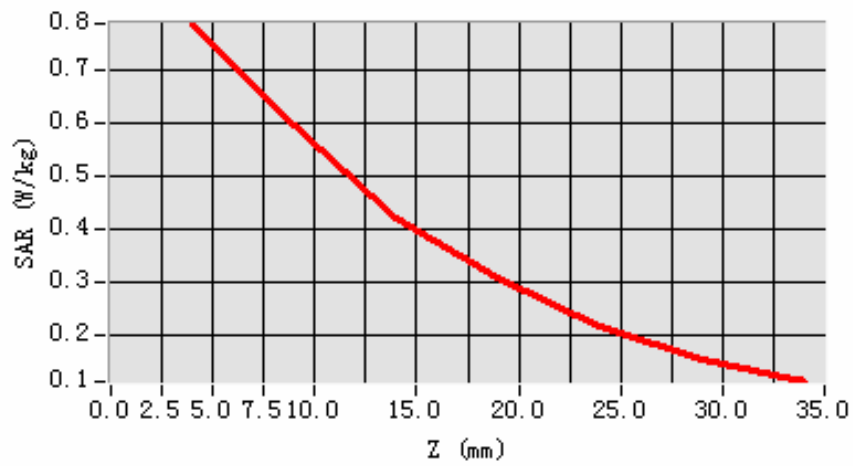
Maximum location: X=10.00, Y=-14.00

SAR 10g (W/Kg)	0.539906
SAR 1g (W/Kg)	0.778325

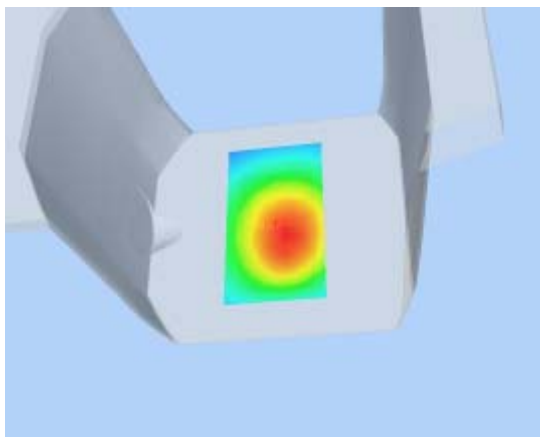
Z Axis Scan

Z (mm)	0.00	4.00	9.00	14.00	19.00	24.00	29.00
SAR (W/Kg)	0.0000	0.7866	0.5953	0.4209	0.3111	0.2178	0.1546

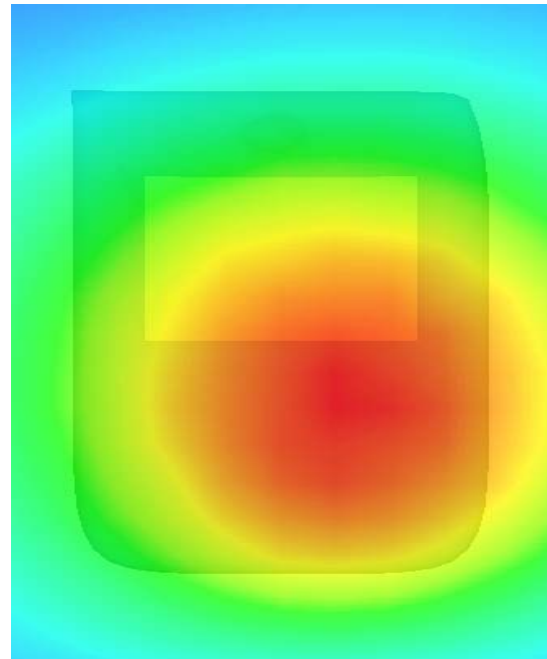
SAR, Z Axis Scan (X = 10, Y = -14)



3D scene shot



Hot spot position



MEASUREMENT 6

Type: Phone measurement (Complete)

Area scan resolution: dx=8mm,dy=8mm

Zoom scan resolution: dx=8mm, dy=8mm, dz=5mm

Date of measurement: 17/9/2010

Measurement duration: 9 minutes 5 seconds

A. Experimental conditions.

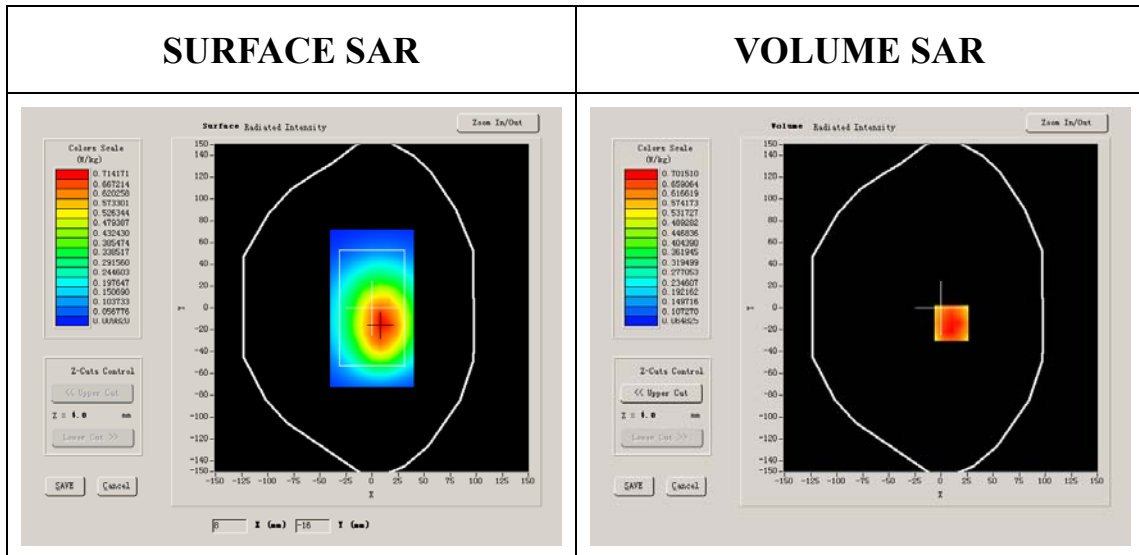
Phantom File	surf_sam_plan.txt
Phantom	Validation plane
Device Position	Body
Band	GSM850
Channels	Middle
Signal	GPRS

B. SAR Measurement Results

Middle Band SAR (Channel 190):

Frequency (MHz)	836.599976
Relative permittivity (real part)	55.709999
Relative permittivity	21.709999

Conductivity (S/m)	1.009033
Variation (%)	-0.760000
Ambient Temperature:	22.3°C
Liquid Temperature:	22.2°C
ConvF:	28.479,25.214,27.196
Crest factor:	1:4



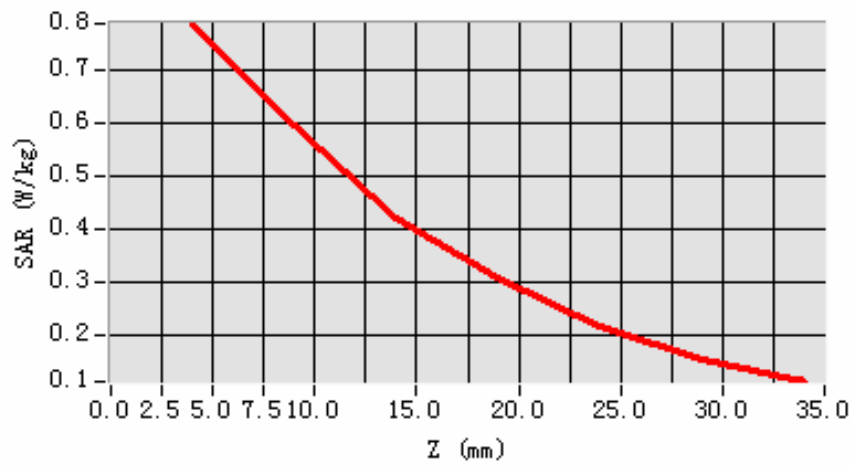
Maximum location: X=10.00, Y=-14.00

SAR 10g (W/Kg)	0.362442
SAR 1g (W/Kg)	0.583002

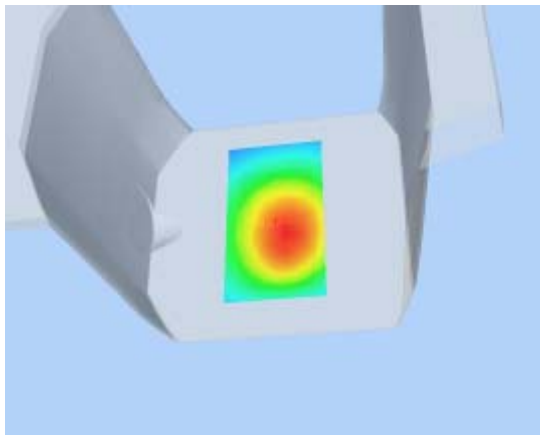
Z Axis Scan

Z (mm)	0.00	4.00	9.00	14.00	19.00	24.00	29.00
SAR (W/Kg)	0.0000	0.7866	0.5953	0.4209	0.3111	0.2178	0.1546

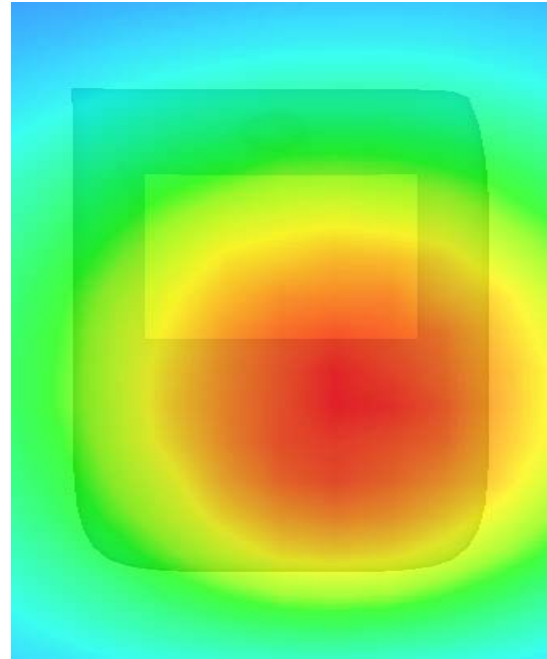
SAR, Z Axis Scan (X = 10, Y = -14)



3D scene shot



Hot spot position



MEASUREMENT 7

Type: Phone measurement (Complete)

Area scan resolution: dx=8mm,dy=8mm

Zoom scan resolution: dx=8mm, dy=8mm, dz=5mm

Date of measurement: 17/9/2010

Measurement duration: 9 minutes 5 seconds

A. Experimental conditions.

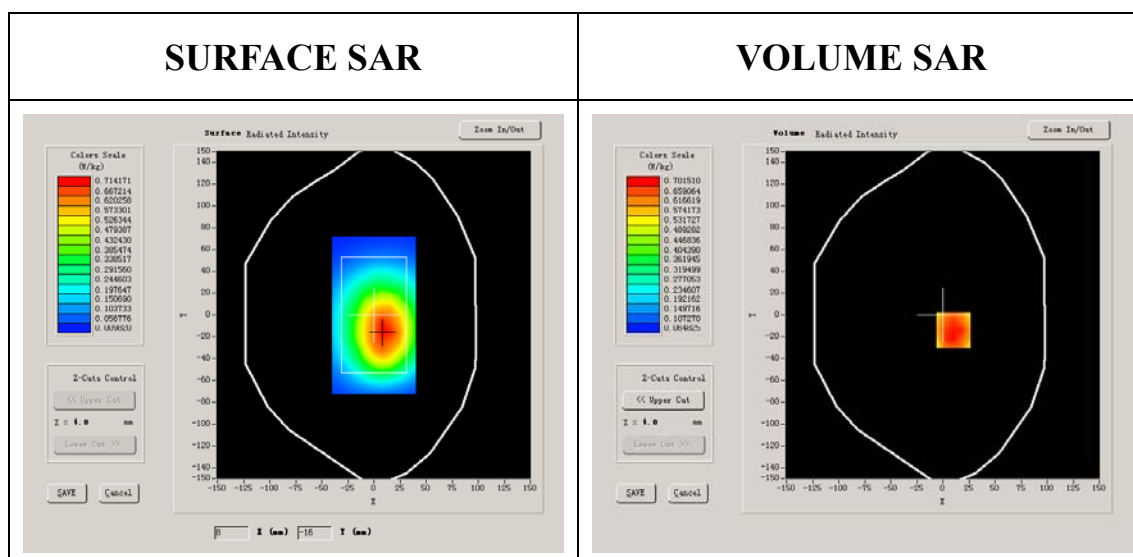
Phantom File	surf_sam_plan.txt
Phantom	Validation plane
Device Position	Body
Band	GSM850
Channels	Middle
Signal	GSM

B. SAR Measurement Results

Middle Band SAR (Channel 190):

Frequency (MHz)	836.599976
Relative permittivity (real part)	55.709999
Relative permittivity	21.709999

Conductivity (S/m)	1.009033
Variation (%)	-0.760000
Ambient Temperature:	22.3°C
Liquid Temperature:	22.2°C
ConvF:	28.479,25.214,27.196
Crest factor:	1:8



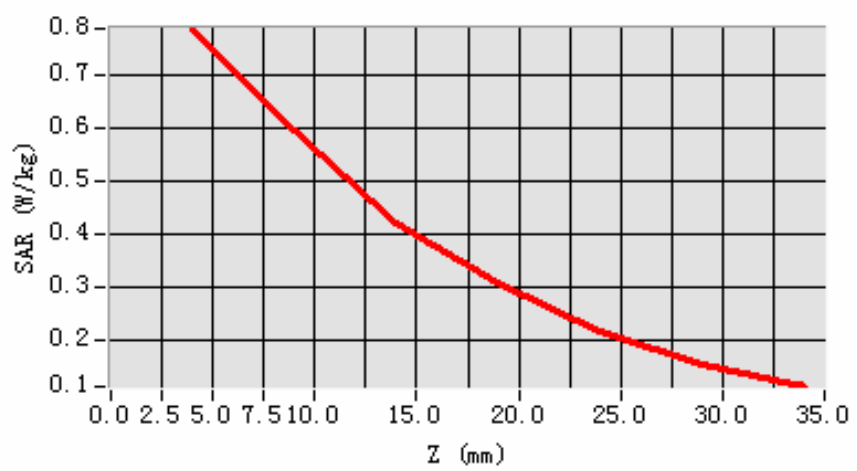
Maximum location: X=10.00, Y=-14.00

SAR 10g (W/Kg)	0.273511
SAR 1g (W/Kg)	0.412617

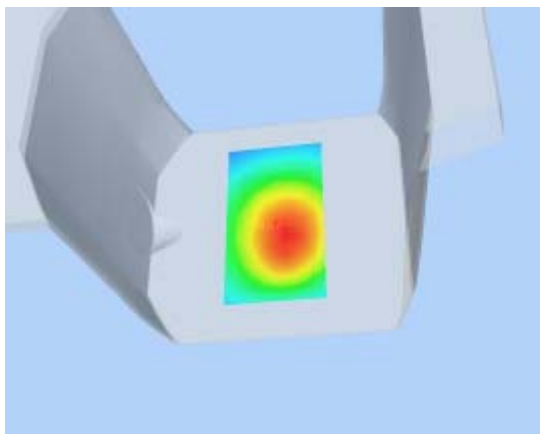
Z Axis Scan

Z (mm)	0.00	4.00	9.00	14.00	19.00	24.00	29.00
SAR (W/Kg)	0.0000	0.7866	0.5953	0.4209	0.3111	0.2178	0.1546

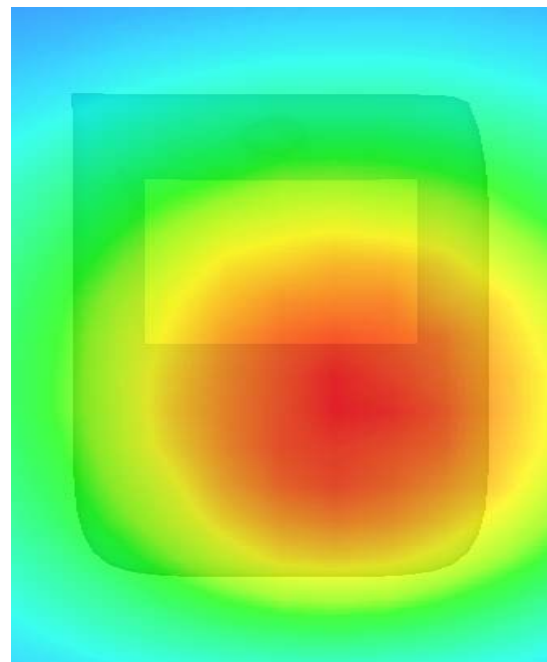
SAR, Z Axis Scan (X = 10, Y = -14)



3D scene shot



Hot spot position



MEASUREMENT 8

Type: Phone measurement (Complete)

Area scan resolution: dx=8mm,dy=8mm

Zoom scan resolution: dx=8mm, dy=8mm, dz=5mm

Date of measurement: 17/9/2010

Measurement duration: 9 minutes 5 seconds

A. Experimental conditions.

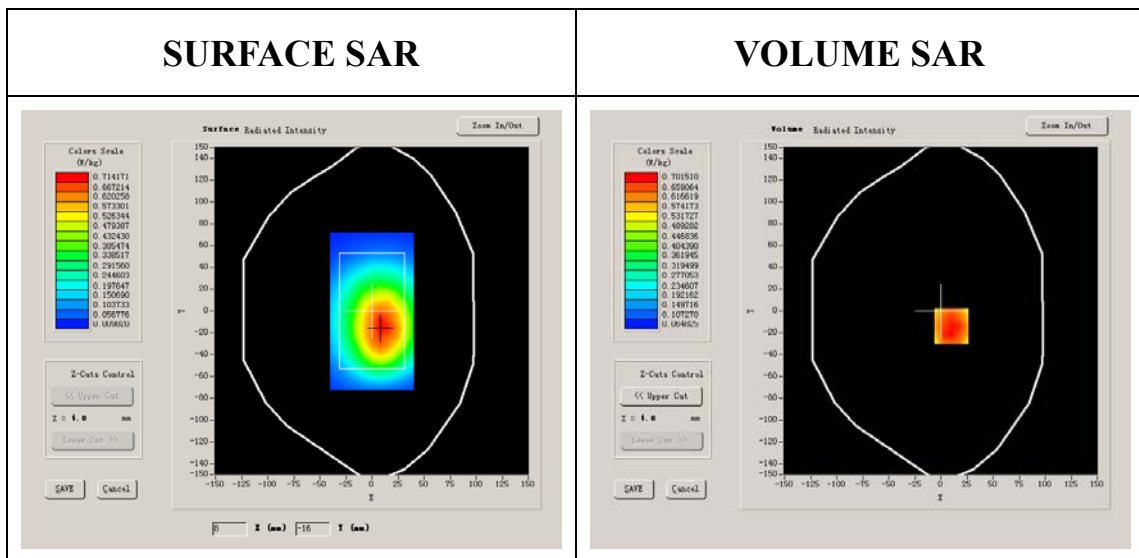
Phantom File	surf_sam_plan.txt
Phantom	Validation plane
Device Position	Body
Band	GSM850
Channels	Middle
Signal	GSM

B. SAR Measurement Results

Middle Band SAR (Channel 190):

Frequency (MHz)	836.599976
Relative permittivity (real part)	55.709999
Relative permittivity	21.709999

Conductivity (S/m)	1.009033
Variation (%)	-0.760000
Ambient Temperature:	22.3°C
Liquid Temperature:	22.2°C
ConvF:	28.479,25.214,27.196
Crest factor:	1:8



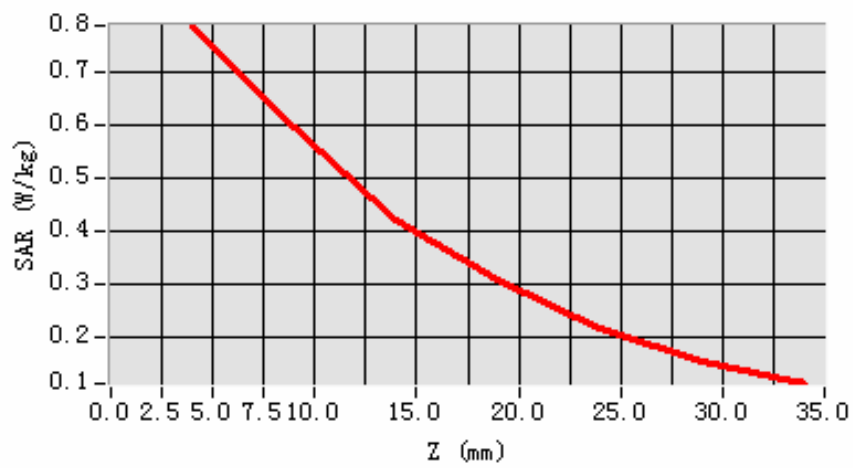
Maximum location: X=10.00, Y=-14.00

SAR 10g (W/Kg)	0.173463
SAR 1g (W/Kg)	0.347836

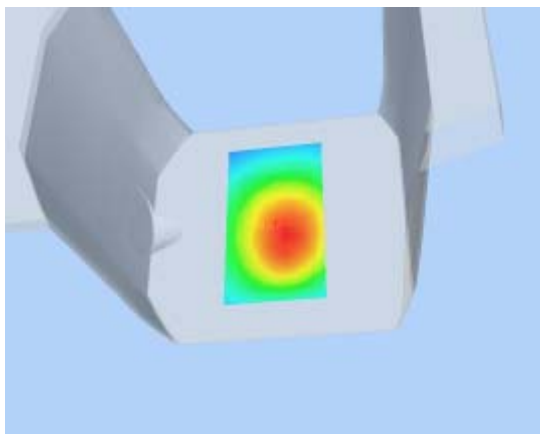
Z Axis Scan

Z (mm)	0.00	4.00	9.00	14.00	19.00	24.00	29.00
SAR (W/Kg)	0.0000	0.7866	0.5953	0.4209	0.3111	0.2178	0.1546

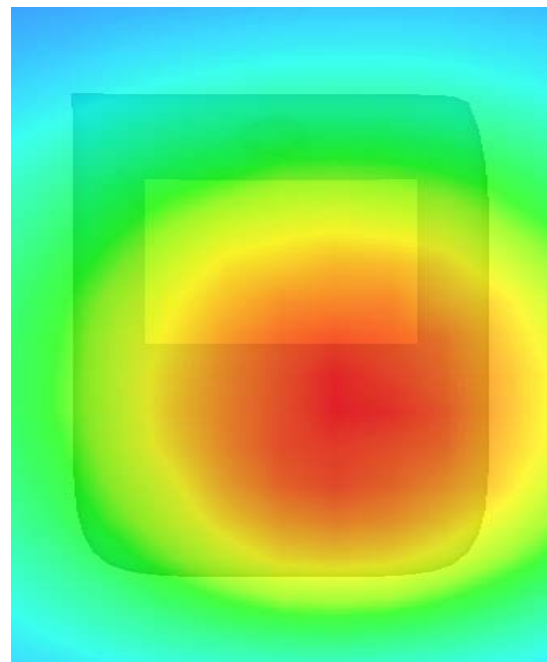
SAR, Z Axis Scan (X = 10, Y = -14)



3D scene shot



Hot spot position



MEASUREMENT 9

Type: Phone measurement (Complete)

Area scan resolution: dx=8mm,dy=8mm

Zoom scan resolution: dx=8mm, dy=8mm, dz=5mm

Date of measurement: 17/9/2010

Measurement duration: 9 minutes 5 seconds

A. Experimental conditions.

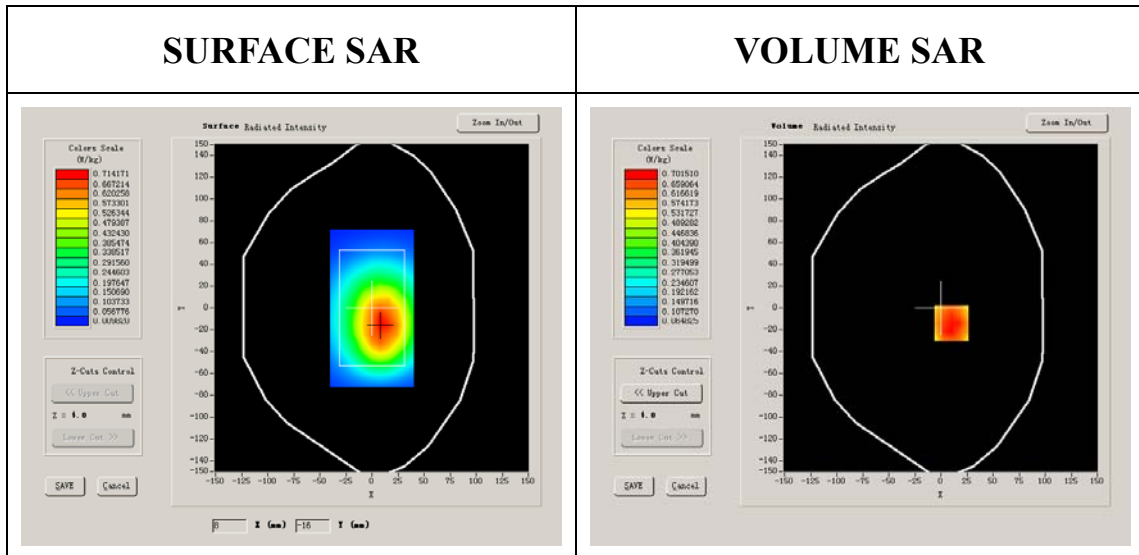
Phantom File	surf_sam_plan.txt
Phantom	Validation plane
Device Position	Body
Band	GSM850
Channels	Middle
Signal	GSM

B. SAR Measurement Results

Middle Band SAR (Channel 190):

Frequency (MHz)	836.599976
Relative permittivity (real part)	55.709999
Relative permittivity	21.709999

Conductivity (S/m)	1.009033
Variation (%)	-0.760000
Ambient Temperature:	22.3°C
Liquid Temperature:	22.2°C
ConvF:	28.479,25.214,27.196
Crest factor:	1:8



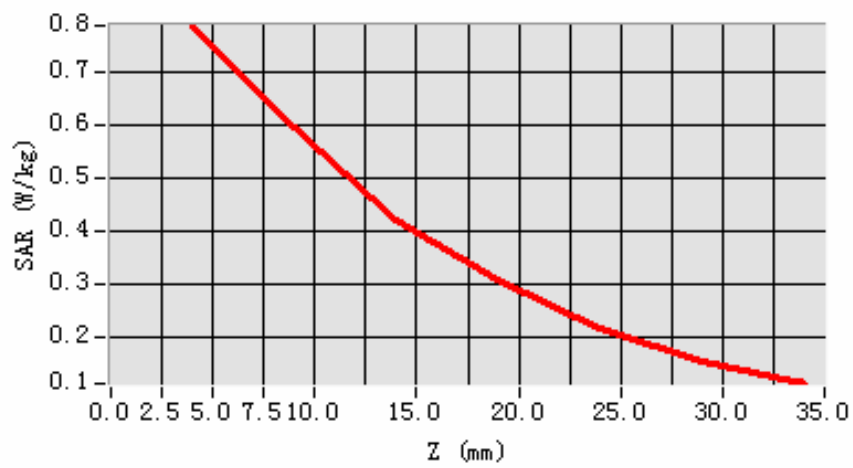
Maximum location: X=10.00, Y=-14.00

SAR 10g (W/Kg)	0.269252
SAR 1g (W/Kg)	0.412722

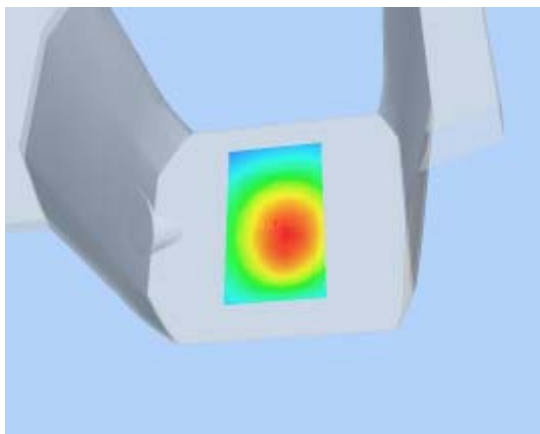
Z Axis Scan

Z (mm)	0.00	4.00	9.00	14.00	19.00	24.00	29.00
SAR (W/Kg)	0.0000	0.7866	0.5953	0.4209	0.3111	0.2178	0.1546

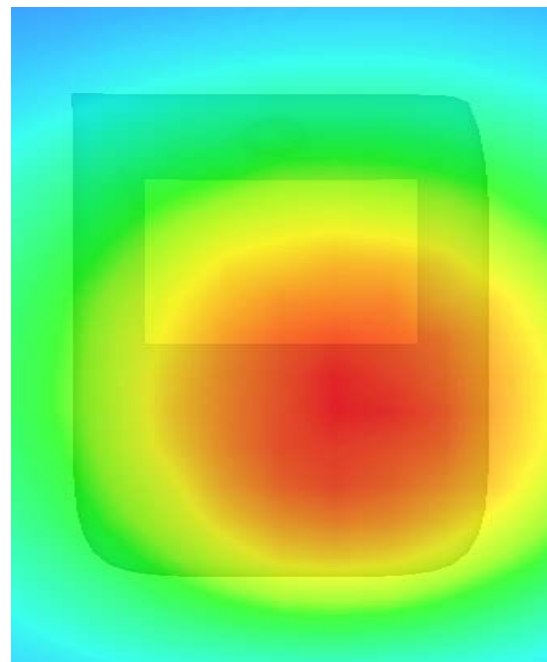
SAR, Z Axis Scan (X = 10, Y = -14)



3D scene shot



Hot spot position



MEASUREMENT 10

Type: Phone measurement (Complete)

Area scan resolution: dx=8mm,dy=8mm

Zoom scan resolution: dx=8mm, dy=8mm, dz=5mm

Date of measurement: 17/9/2010

Measurement duration: 7 minutes 56 seconds

A. Experimental conditions.

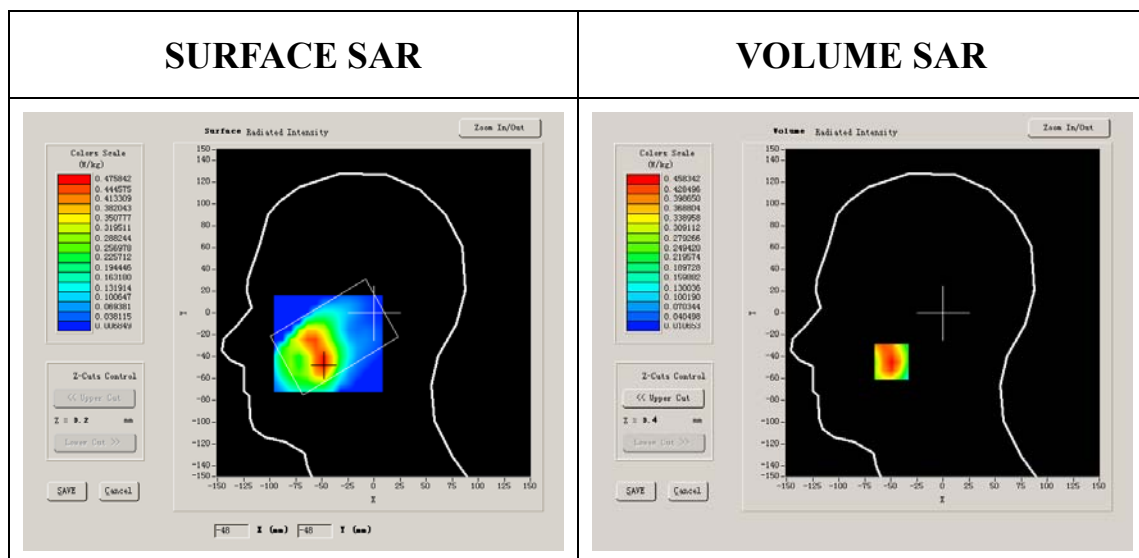
Phantom File	sam_direct_droit2_surf8mm.txt
Phantom	Right head
Device Position	Cheek
Band	GSM1900
Channels	Middle
Signal	GSM

B. SAR Measurement Results

Middle Band SAR (Channel 661):

Frequency (MHz)	1880.000000
Relative permittivity (real part)	38.509998
Relative permittivity	13.750000

Conductivity (S/m)	1.436111
Variation (%)	-2.710000
Ambient Temperature:	23.4°C
Liquid Temperature:	23.1°C
ConvF:	40.136,34.843,38.721
Crest factor:	1:8

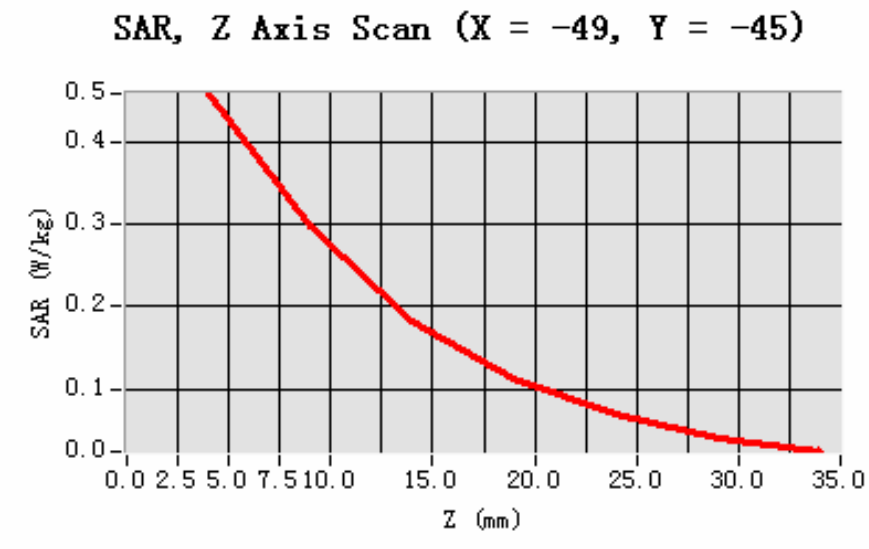


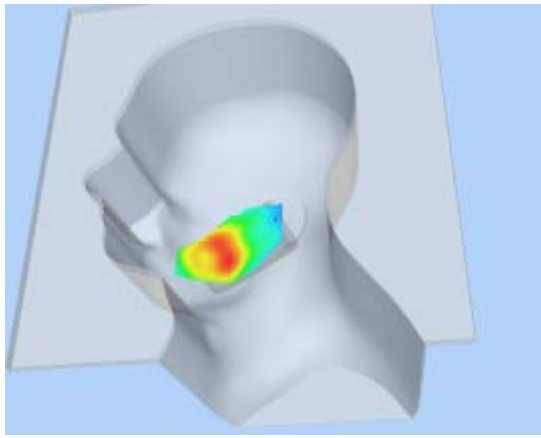
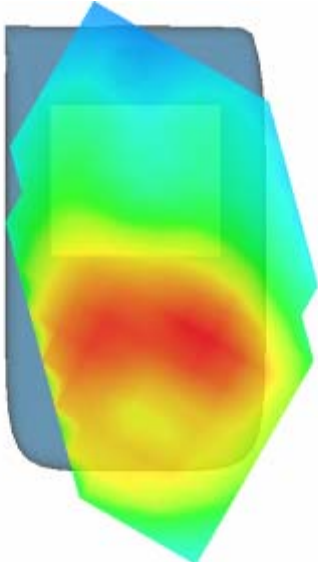
Maximum location: X=-49.00, Y=-45.00

SAR 10g (W/Kg)	0.258258
SAR 1g (W/Kg)	0.433686

Z Axis Scan

Z (mm)	0.00	4.00	9.00	14.00	19.00	24.00	29.00
SAR (W/Kg)	0.0000	0.4583	0.2984	0.1828	0.1128	0.0706	0.0412



3D scen shot	Hot spot position
	

MEASUREMENT 11

Type: Phone measurement (Complete)

Area scan resolution: dx=8mm,dy=8mm

Zoom scan resolution: dx=8mm, dy=8mm, dz=5mm

Date of measurement: 17/9/2010

Measurement duration: 7 minutes 45 seconds

A. Experimental conditions.

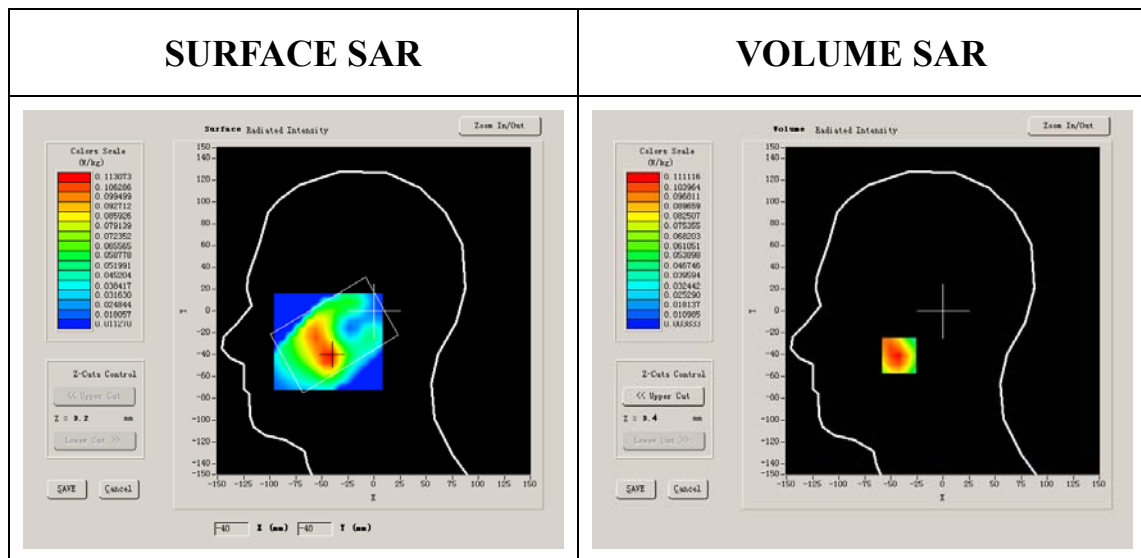
Phantom File	sam_direct_droit2_surf8mm.txt
Phantom	Right head
Device Position	Tilt
Band	GSM1900
Channels	Middle
Signal	GSM

B. SAR Measurement Results

Middle Band SAR (Channel 661):

Frequency (MHz)	1880.000000
Relative permittivity (real part)	38.509998
Relative permittivity	13.750000

Conductivity (S/m)	1.436111
Variation (%)	-2.810000
Ambient Temperature:	23.4°C
Liquid Temperature:	23.1°C
ConvF:	40.136,34.843,38.721
Crest factor:	1:8

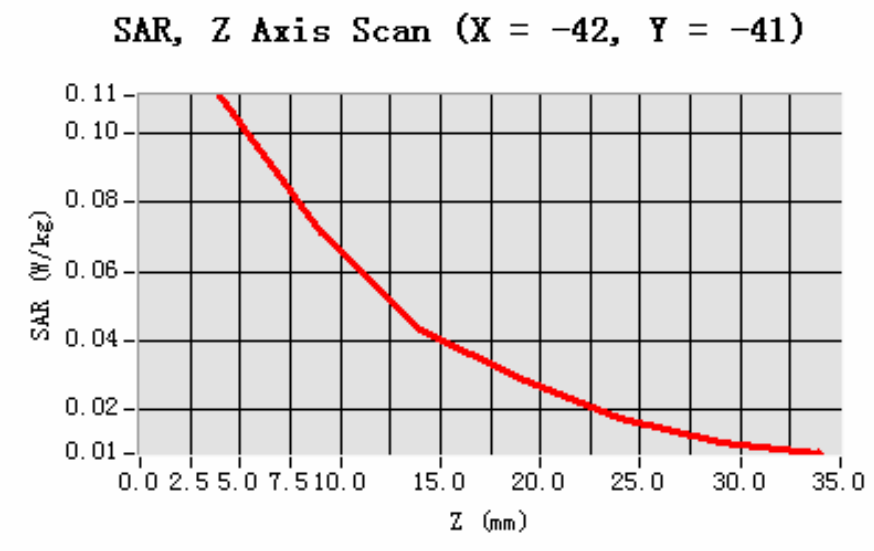


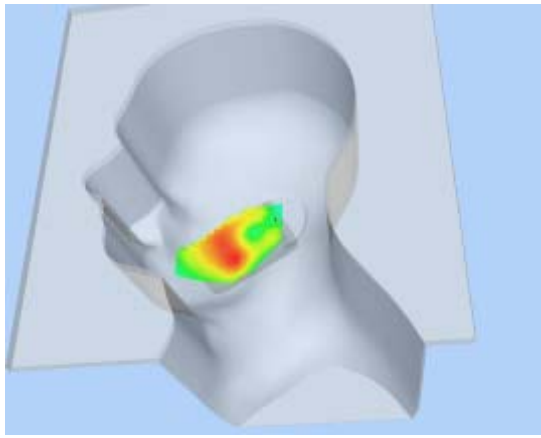
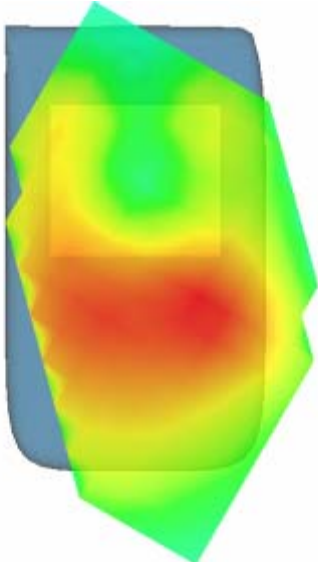
Maximum location: X=-42.00, Y=-41.00

SAR 10g (W/Kg)	0.064127
SAR 1g (W/Kg)	0.105938

Z Axis Scan

Z (mm)	0.00	4.00	9.00	14.00	19.00	24.00	29.00
SAR (W/Kg)	0.0000	0.1111	0.0710	0.0430	0.0290	0.0173	0.0103



3D scen shot	Hot spot position
	

MEASUREMENT 12

Type: Phone measurement (Complete)

Area scan resolution: dx=8mm,dy=8mm

Zoom scan resolution: dx=8mm, dy=8mm, dz=5mm

Date of measurement: 17/9/2010

Measurement duration: 7 minutes 53 seconds

A. Experimental conditions.

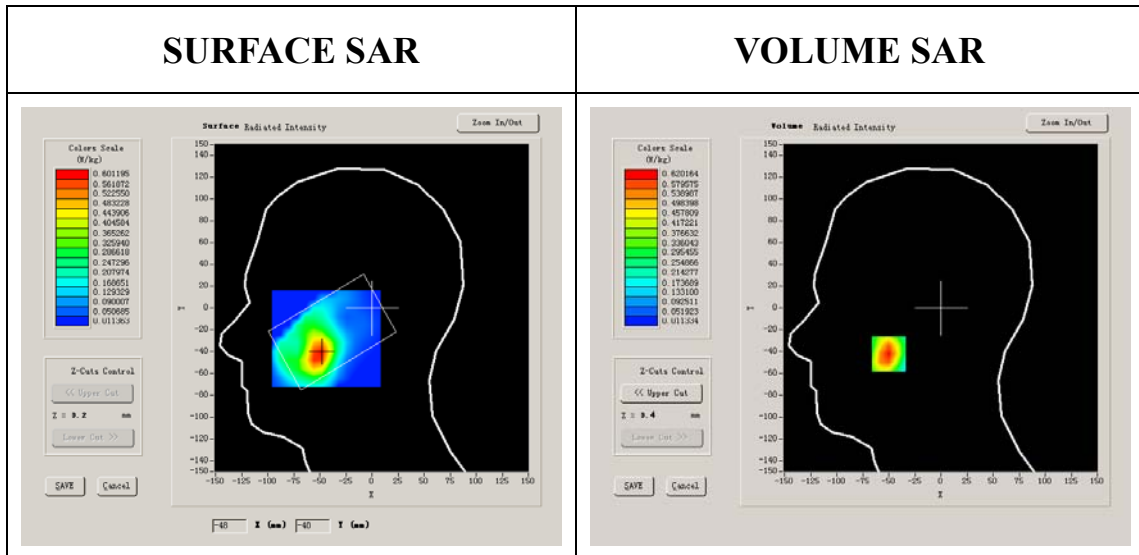
Phantom File	sam_direct_droit2_surf8mm.txt
Phantom	Left head
Device Position	Cheek
Band	GSM1900
Channels	Middle
Signal	GSM

B. SAR Measurement Results

Middle Band SAR (Channel 661):

Frequency (MHz)	1880.000000
Relative permittivity (real part)	38.509998
Relative permittivity	13.750000

Conductivity (S/m)	1.436111
Variation (%)	-0.540000
Ambient Temperature:	23.4°C
Liquid Temperature:	23.1°C
ConvF:	40.136,34.843,38.721
Crest factor:	1:8



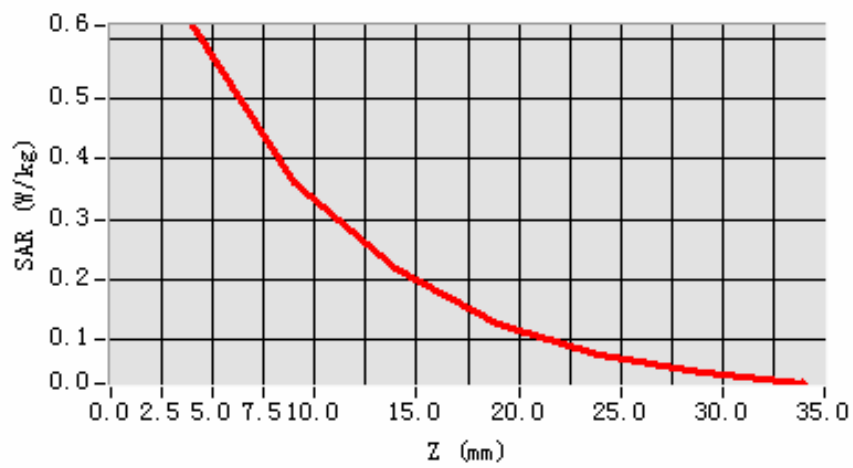
Maximum location: X=-50.00, Y=-42.00

SAR 10g (W/Kg)	0.326836
SAR 1g (W/Kg)	0.585010

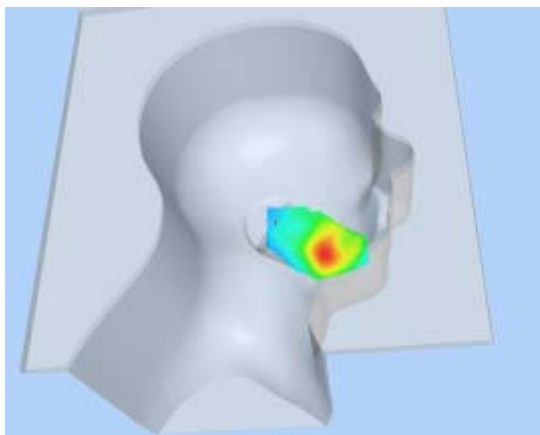
Z Axis Scan

Z (mm)	0.00	4.00	9.00	14.00	19.00	24.00	29.00
SAR (W/Kg)	0.0000	0.6202	0.3617	0.2191	0.1278	0.0762	0.0463

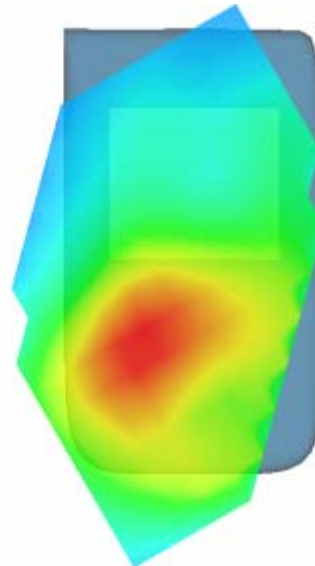
SAR, Z Axis Scan (X = -50, Y = -42)



3D scen shot



Hot spot position



MEASUREMENT 13

Type: Phone measurement (Complete)

Area scan resolution: dx=8mm,dy=8mm

Zoom scan resolution: dx=8mm, dy=8mm, dz=5mm

Date of measurement: 17/9/2010

Measurement duration: 7 minutes 55 seconds

A. Experimental conditions.

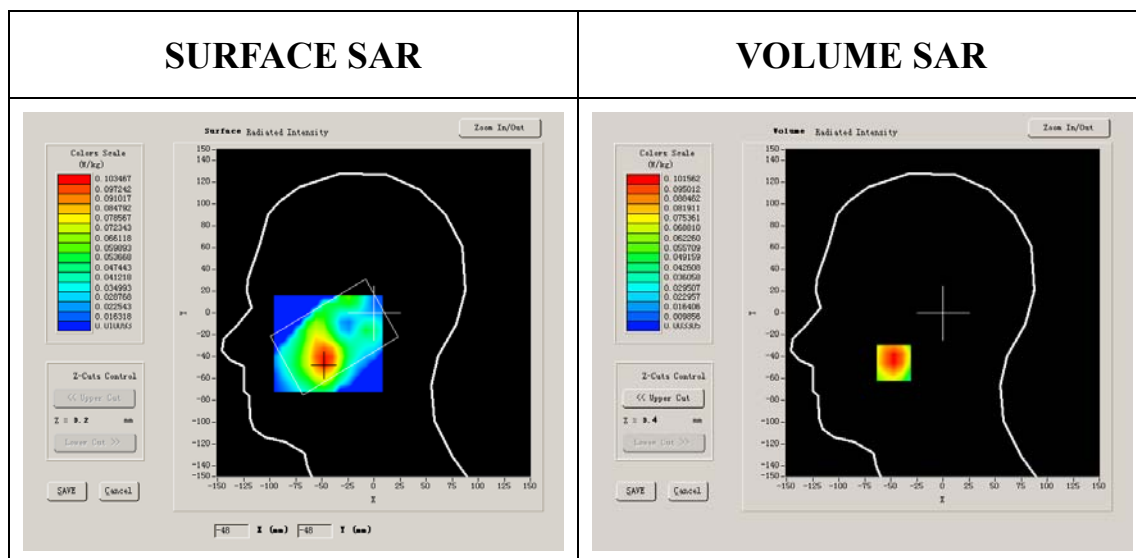
Phantom File	sam_direct_droit2_surf8mm.txt
Phantom	Left head
Device Position	Tilt
Band	GSM1900
Channels	Middle
Signal	GSM

B. SAR Measurement Results

Middle Band SAR (Channel 661):

Frequency (MHz)	1880.000000
Relative permittivity (real part)	38.509998
Relative permittivity	13.750000

Conductivity (S/m)	1.436111
Variation (%)	-2.120000
Ambient Temperature:	23.4°C
Liquid Temperature:	23.1°C
ConvF:	40.136,34.843,38.721
Crest factor:	1:8

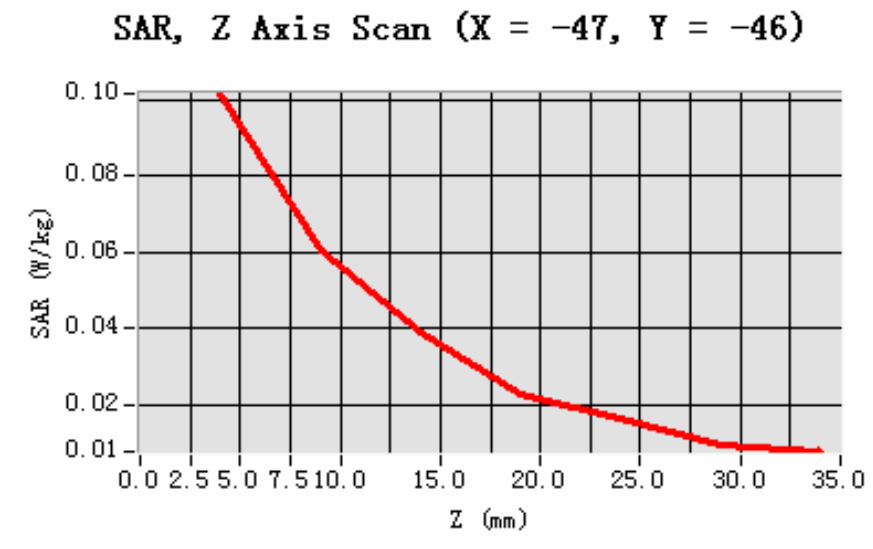


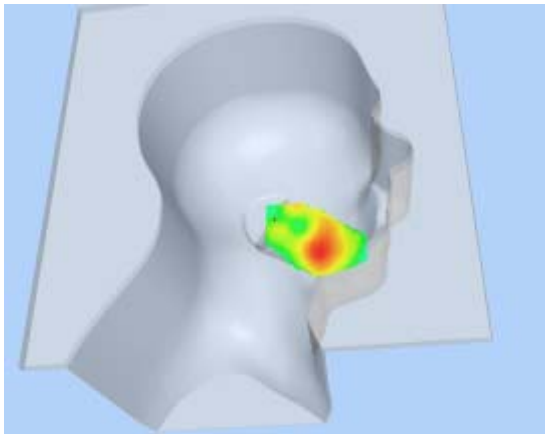
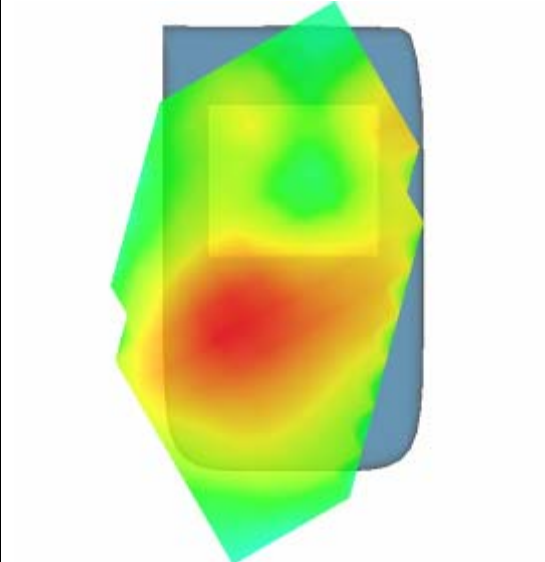
Maximum location: X=-47.00, Y=-46.00

SAR 10g (W/Kg)	0.058691
SAR 1g (W/Kg)	0.098593

Z Axis Scan

Z (mm)	0.00	4.00	9.00	14.00	19.00	24.00	29.00
SAR (W/Kg)	0.0000	0.1016	0.0604	0.0388	0.0228	0.0163	0.0091



3D scen shot	Hot spot position
	

MEASUREMENT 14

Type: Phone measurement (Complete)

Area scan resolution: dx=8mm,dy=8mm

Zoom scan resolution: dx=8mm, dy=8mm, dz=5mm

Date of measurement: 17/9/2010

Measurement duration: 9 minutes 8 seconds

A. Experimental conditions.

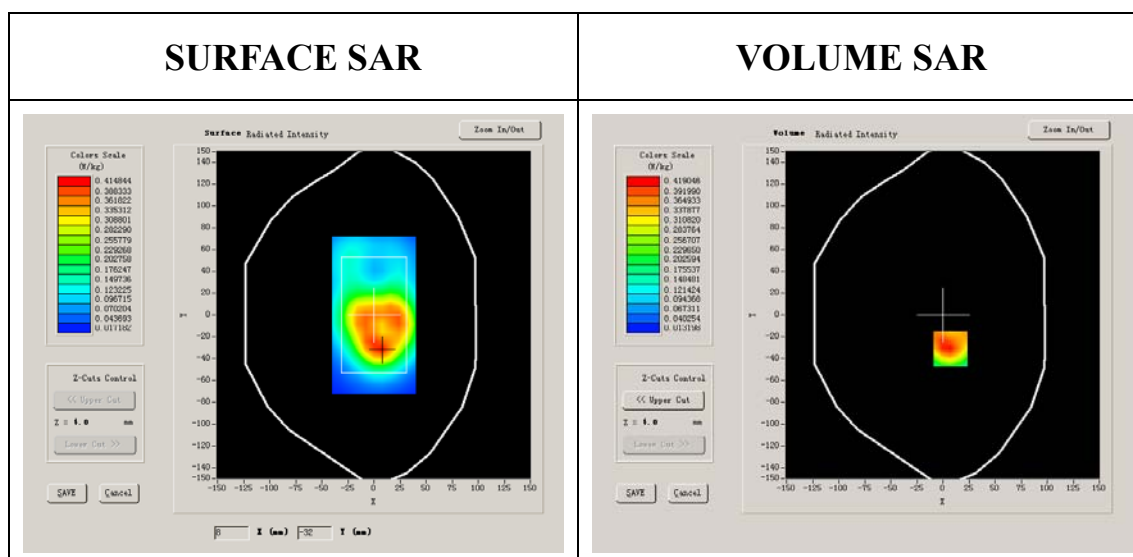
Phantom File	surf_sam_plan.txt
Phantom	Validation plane
Device Position	Body
Band	GSM1900
Channels	Middle
Signal	GPRS

B. SAR Measurement Results

Middle Band SAR (Channel 661):

Frequency (MHz)	1880.000000
Relative permittivity (real part)	51.540001
Relative permittivity	15.070000

Conductivity (S/m)	1.573978
Variation (%)	0.040000
Ambient Temperature:	23.4°C
Liquid Temperature:	23.1°C
ConvF:	40.136,34.843,38.721
Crest factor:	1:4

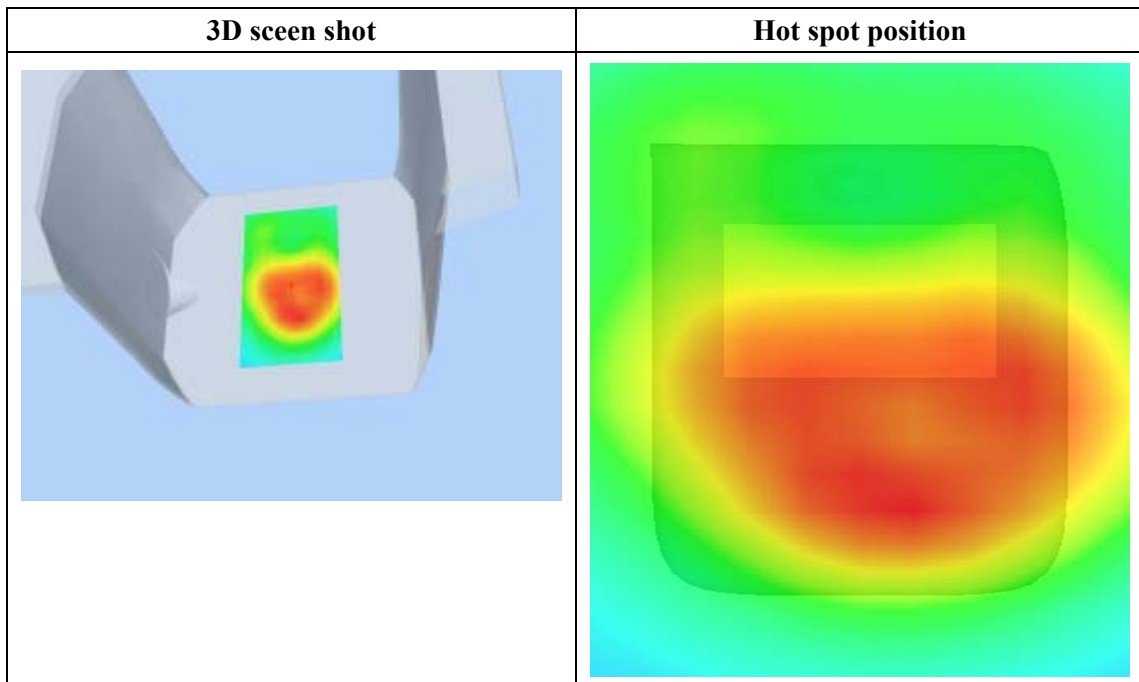
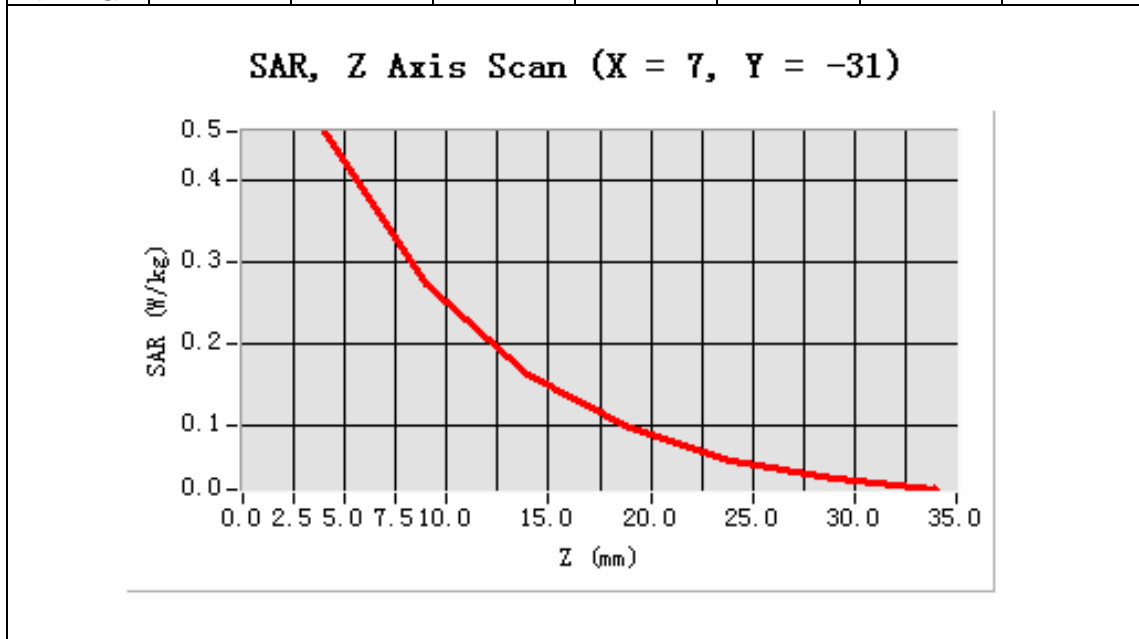


Maximum location: X=7.00, Y=-31.00

SAR 10g (W/Kg)	0.257940
SAR 1g (W/Kg)	0.440726

Z Axis Scan

Z (mm)	0.00	4.00	9.00	14.00	19.00	24.00	29.00
SAR (W/Kg)	0.0000	0.4593	0.2735	0.1637	0.0976	0.0564	0.0357



MEASUREMENT 15

Type: Phone measurement (Complete)

Area scan resolution: dx=8mm,dy=8mm

Zoom scan resolution: dx=8mm, dy=8mm, dz=5mm

Date of measurement: 17/9/2010

Measurement duration: 9 minutes 8 seconds

A. Experimental conditions.

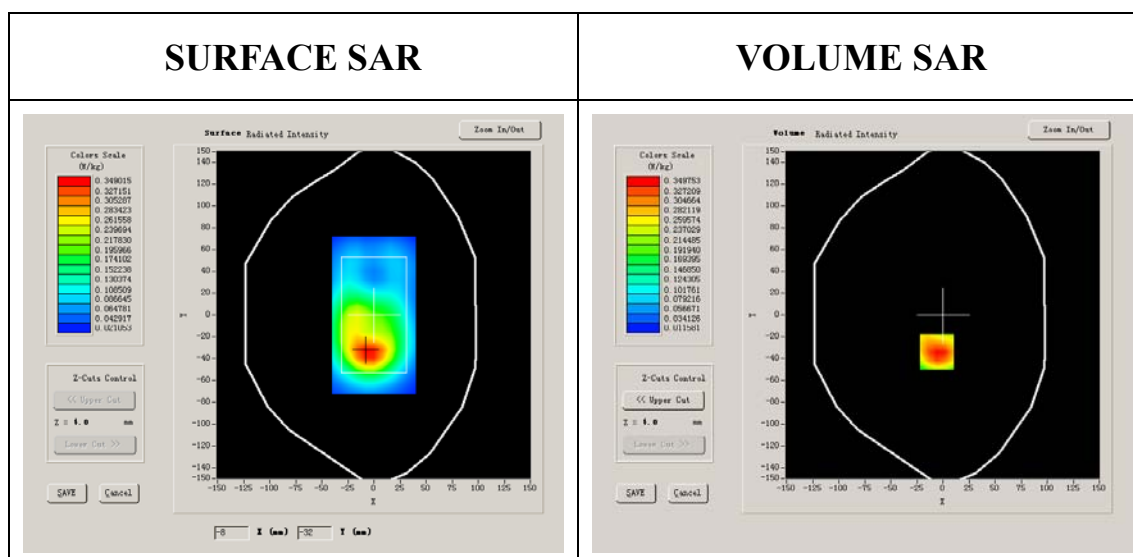
Phantom File	surf_sam_plan.txt
Phantom	Validation plane
Device Position	Body
Band	GSM1900
Channels	Middle
Signal	GPRS

B. SAR Measurement Results

Middle Band SAR (Channel 661):

Frequency (MHz)	1880.000000
Relative permittivity (real part)	51.540001
Relative permittivity	15.070000

Conductivity (S/m)	1.573978
Variation (%)	-0.920000
Ambient Temperature:	23.4°C
Liquid Temperature:	23.1°C
ConvF:	40.136,34.843,38.721
Crest factor:	1:4



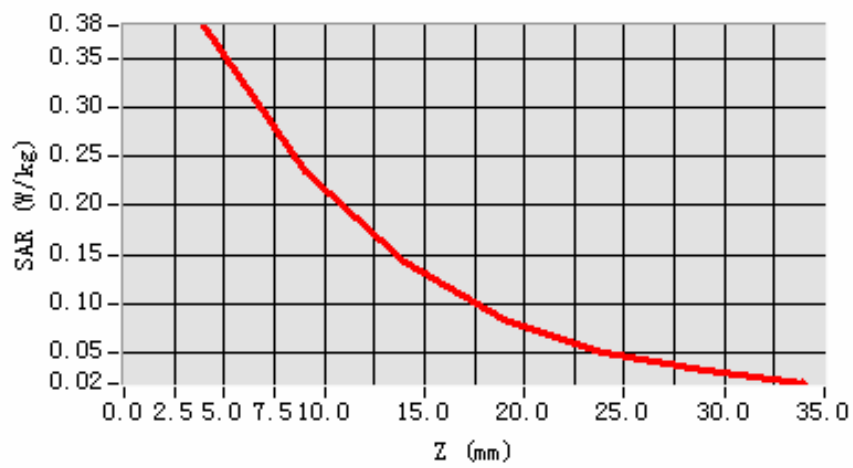
Maximum location: X=-6.00, Y=-34.00

SAR 10g (W/Kg)	0.217161
SAR 1g (W/Kg)	0.367637

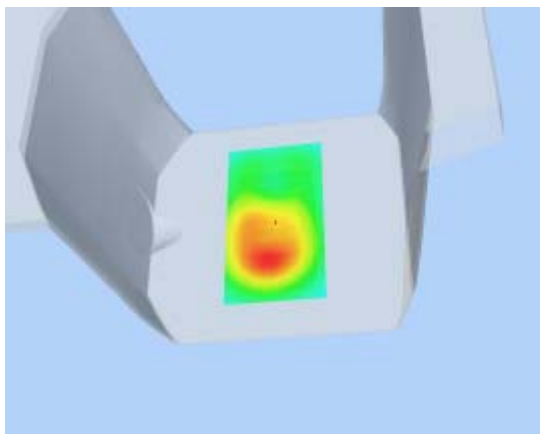
Z Axis Scan

Z (mm)	0.00	4.00	9.00	14.00	19.00	24.00	29.00
SAR (W/Kg)	0.0000	0.3833	0.2337	0.1415	0.0836	0.0495	0.0310

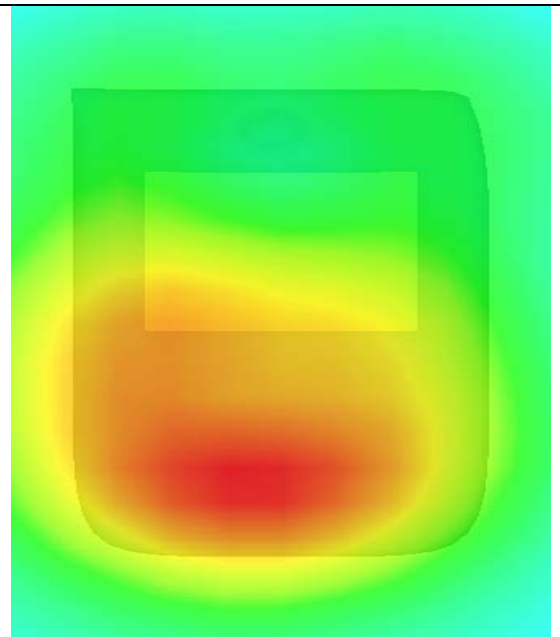
SAR, Z Axis Scan (X = -6, Y = -34)



3D scene shot



Hot spot position



MEASUREMENT 16

Type: Phone measurement (Complete)

Area scan resolution: dx=8mm,dy=8mm

Zoom scan resolution: dx=8mm, dy=8mm, dz=5mm

Date of measurement: 17/9/2010

Measurement duration: 9 minutes 2 seconds

A. Experimental conditions.

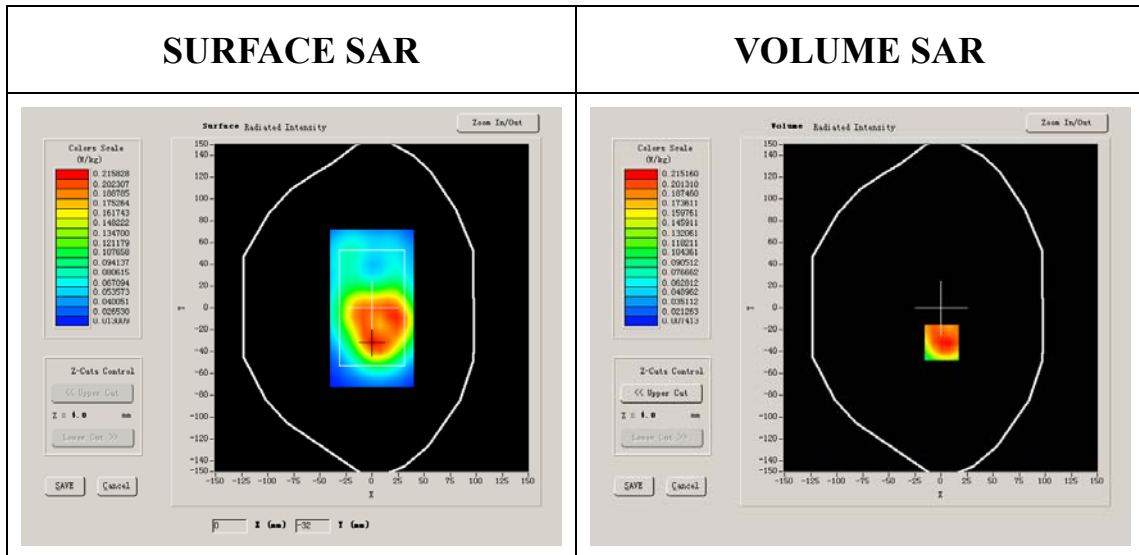
Phantom File	surf_sam_plan.txt
Phantom	Validation plane
Device Position	Body
Band	GSM1900
Channels	Middle
Signal	GSM

B. SAR Measurement Results

Middle Band SAR (Channel 661):

Frequency (MHz)	1880.000000
Relative permittivity (real part)	51.540001
Relative permittivity	15.070000

Conductivity (S/m)	1.573978
Variation (%)	1.160000
Ambient Temperature:	23.4°C
Liquid Temperature:	23.1°C
ConvF:	40.136,34.843,38.721
Crest factor:	1:8

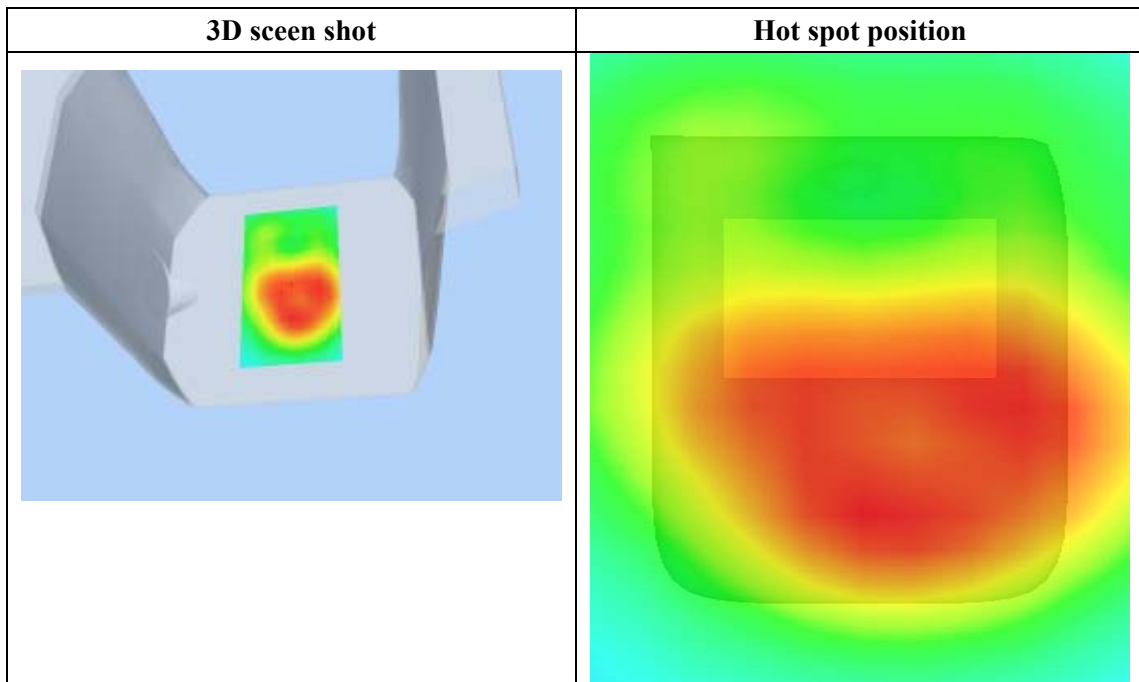
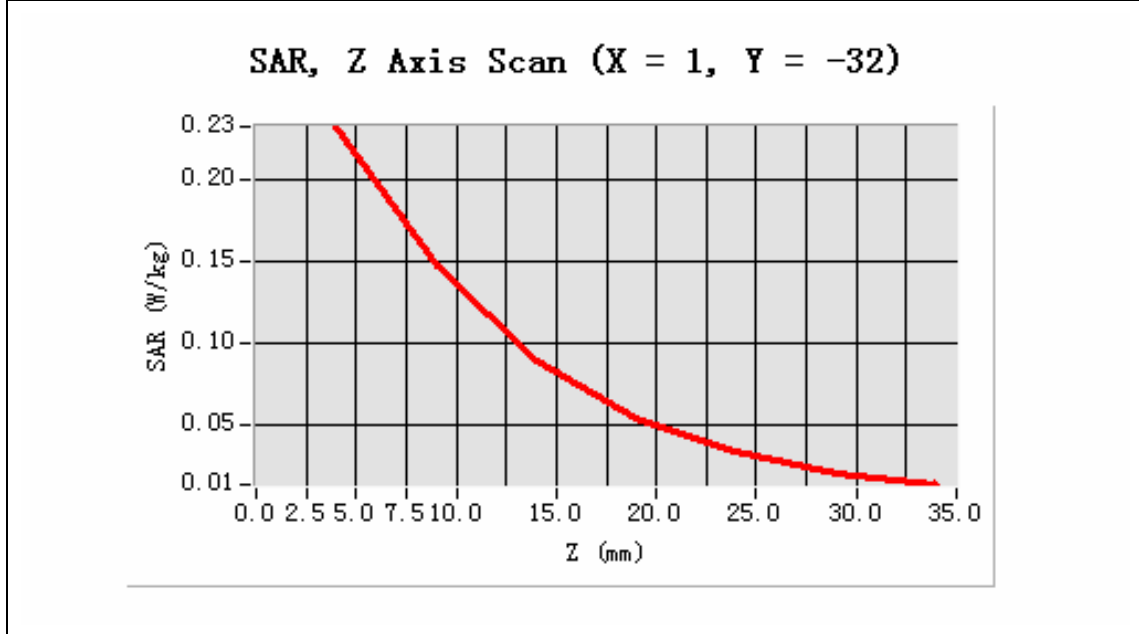


Maximum location: X=1.00, Y=-32.00

SAR 10g (W/Kg)	0.136915
SAR 1g (W/Kg)	0.226909

Z Axis Scan

Z (mm)	0.00	4.00	9.00	14.00	19.00	24.00	29.00
SAR (W/Kg)	0.0000	0.2329	0.1470	0.0884	0.0532	0.0326	0.0196



MEASUREMENT 17

Type: Phone measurement (Complete)

Area scan resolution: dx=8mm,dy=8mm

Zoom scan resolution: dx=8mm, dy=8mm, dz=5mm

Date of measurement: 17/9/2010

Measurement duration: 9 minutes 2 seconds

A. Experimental conditions.

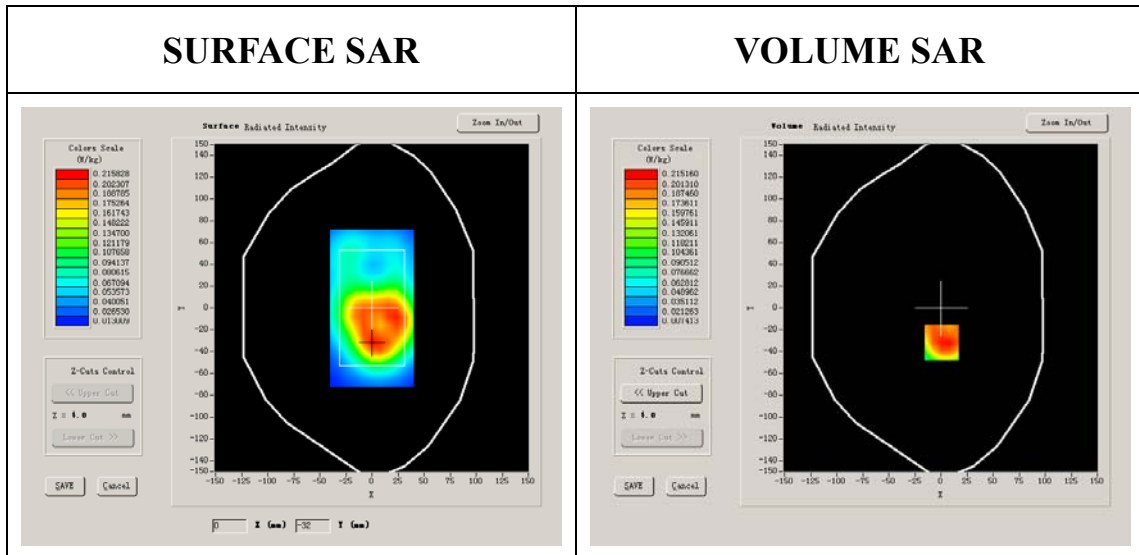
Phantom File	surf_sam_plan.txt
Phantom	Validation plane
Device Position	Body
Band	GSM1900
Channels	Middle
Signal	GSM

B. SAR Measurement Results

Middle Band SAR (Channel 661):

Frequency (MHz)	1880.000000
Relative permittivity (real part)	51.540001
Relative permittivity	15.070000

Conductivity (S/m)	1.573978
Variation (%)	1.160000
Ambient Temperature:	23.4°C
Liquid Temperature:	23.1°C
ConvF:	40.136,34.843,38.721
Crest factor:	1:8

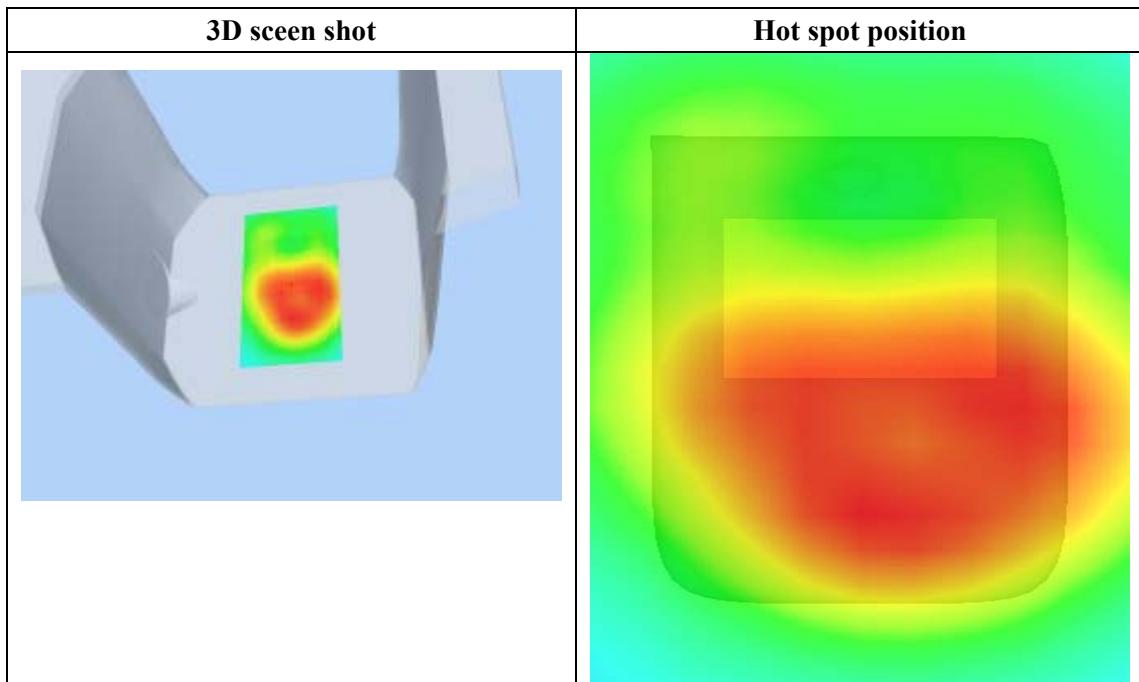
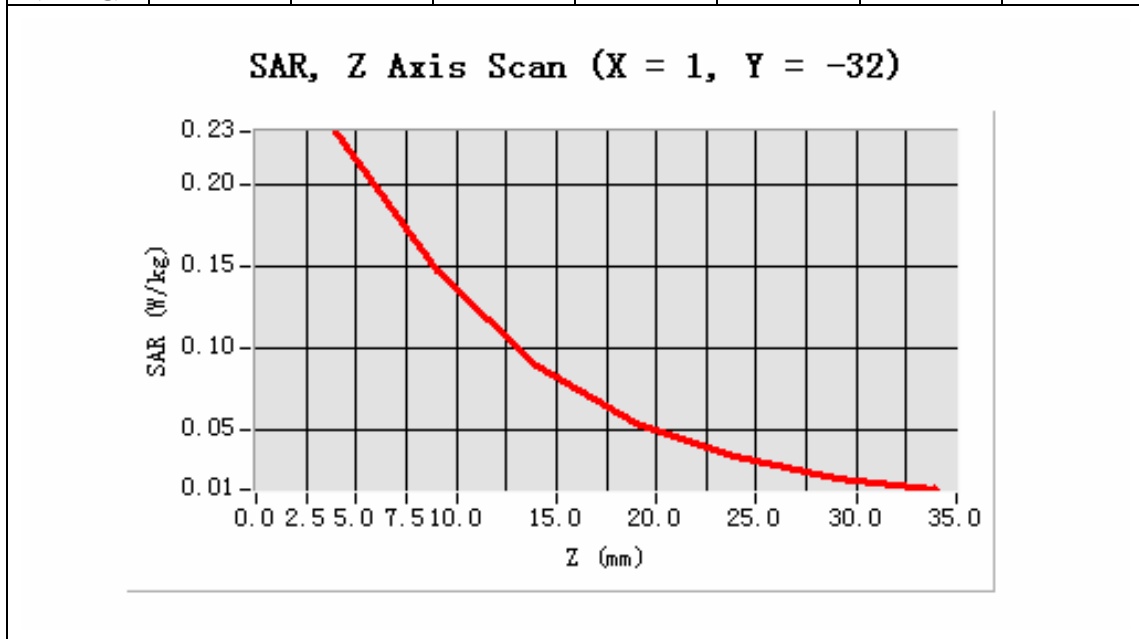


Maximum location: X=1.00, Y=-32.00

SAR 10g (W/Kg)	0.103424
SAR 1g (W/Kg)	0.189355

Z Axis Scan

Z (mm)	0.00	4.00	9.00	14.00	19.00	24.00	29.00
SAR (W/Kg)	0.0000	0.2329	0.1470	0.0884	0.0532	0.0326	0.0196



MEASUREMENT 18

Type: Phone measurement (Complete)

Area scan resolution: dx=8mm,dy=8mm

Zoom scan resolution: dx=8mm, dy=8mm, dz=5mm

Date of measurement: 17/9/2010

Measurement duration: 9 minutes 2 seconds

A. Experimental conditions.

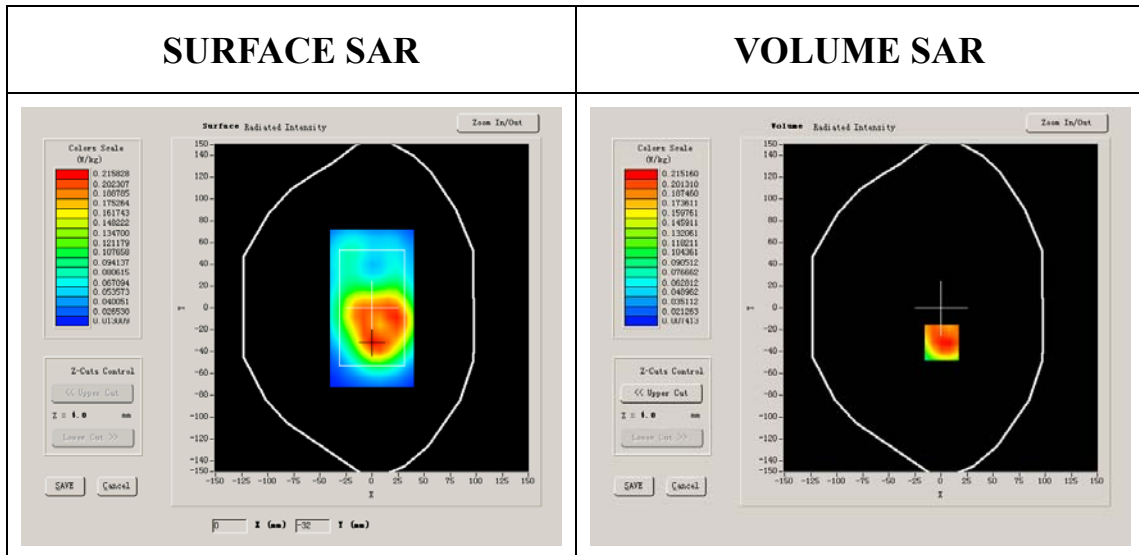
Phantom File	surf_sam_plan.txt
Phantom	Validation plane
Device Position	Body
Band	GSM1900
Channels	Middle
Signal	GSM

B. SAR Measurement Results

Middle Band SAR (Channel 661):

Frequency (MHz)	1880.000000
Relative permittivity (real part)	51.540001
Relative permittivity	15.070000

Conductivity (S/m)	1.573978
Variation (%)	1.160000
Ambient Temperature:	23.4°C
Liquid Temperature:	23.1°C
ConvF:	40.136,34.843,38.721
Crest factor:	1:8

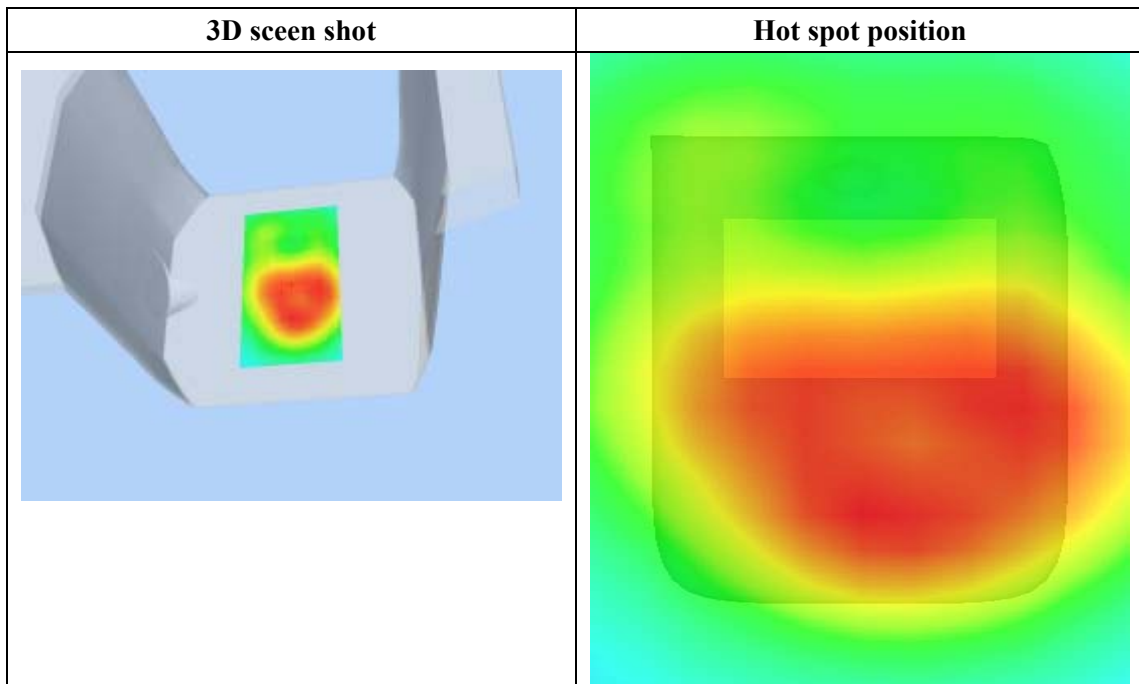
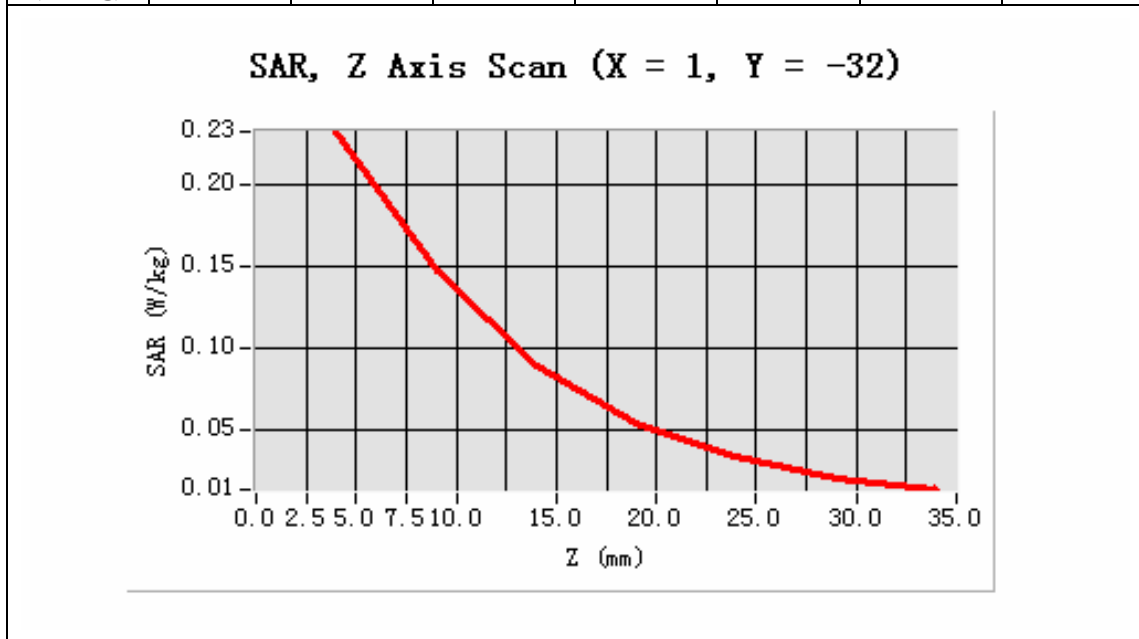


Maximum location: X=1.00, Y=-32.00

SAR 10g (W/Kg)	0.132638
SAR 1g (W/Kg)	0.221483

Z Axis Scan

Z (mm)	0.00	4.00	9.00	14.00	19.00	24.00	29.00
SAR (W/Kg)	0.0000	0.2329	0.1470	0.0884	0.0532	0.0326	0.0196



System Performance Check Data(Head)

Type: Phone measurement (Complete)

Area scan resolution: dx=8mm,dy=8mm

Zoom scan resolution: dx=8mm, dy=8mm, dz=5mm

Date of measurement: 17/9/2010

Measurement duration: 13 minutes 27 seconds

A. Experimental conditions.

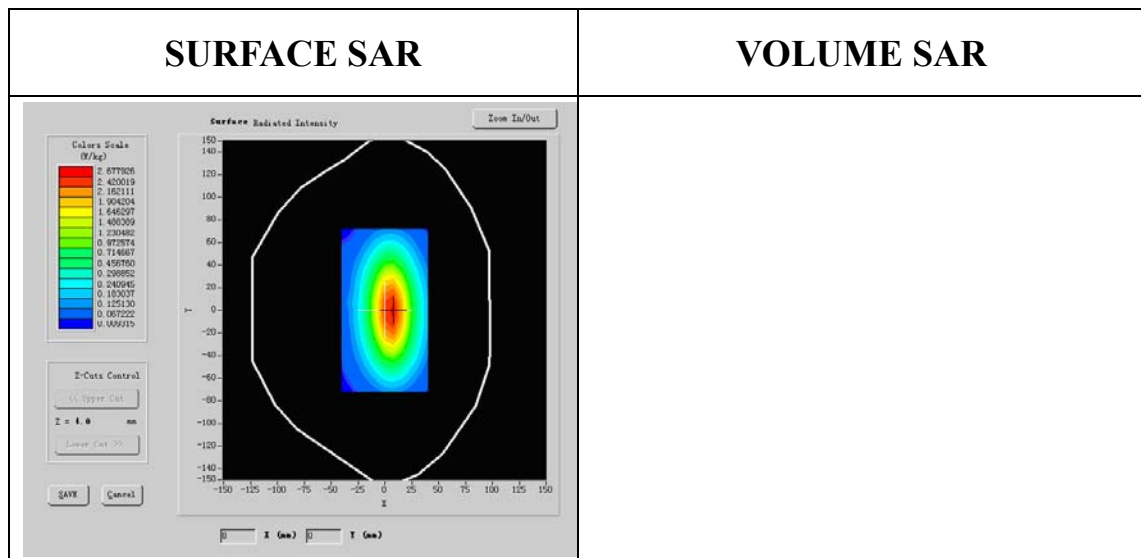
Phantom File	surf_sam_plan.txt
Phantom	Validation plane
Device Position	
Band	835MHz
Channels	
Signal	CW

B. SAR Measurement Results

Band SAR

Frequency (MHz)	835.000000
Relative permittivity (real part)	40.669998
Relative permittivity	15.070000

Conductivity (S/m)	0.888655
Power Drift (%)	-0.050000
Ambient Temperature:	22.4°C
Liquid Temperature:	22.5°C
ConvF:	28.479,25.214,27.196
Crest factor:	1:1

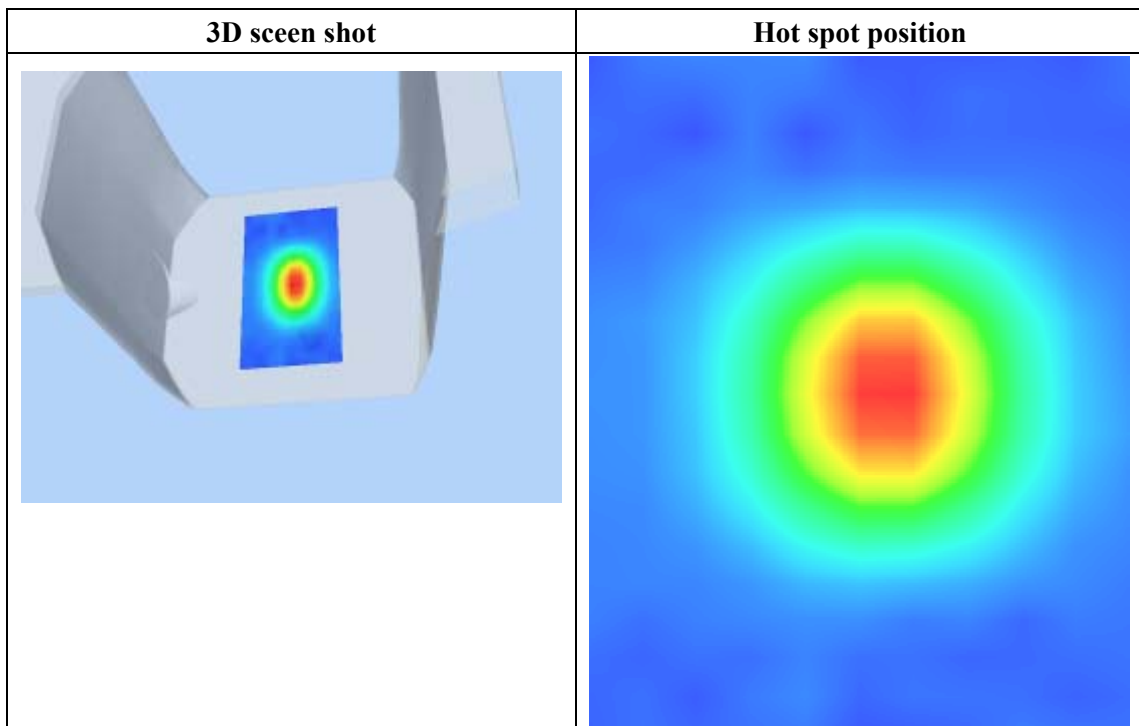
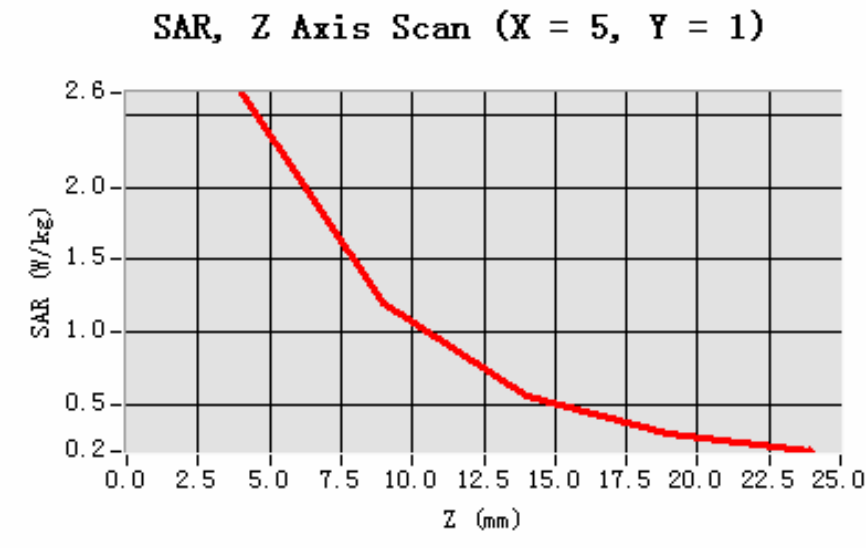


Maximum location: X=5.00, Y=1.00

SAR 10g (W/Kg)	1.715223
SAR 1g (W/Kg)	2.677926

Z Axis Scan

Z (mm)	0.00	4.00	9.00	14.00	19.00
SAR (W/Kg)	0.0000	2.6486	1.2069	0.5583	0.3002



System Performance Check Data(body)

Type: Phone measurement (Complete)

Area scan resolution: dx=8mm,dy=8mm

Zoom scan resolution: dx=8mm, dy=8mm, dz=5mm

Date of measurement: 17/9/2010

Measurement duration: 13 minutes 27 seconds

A. Experimental conditions.

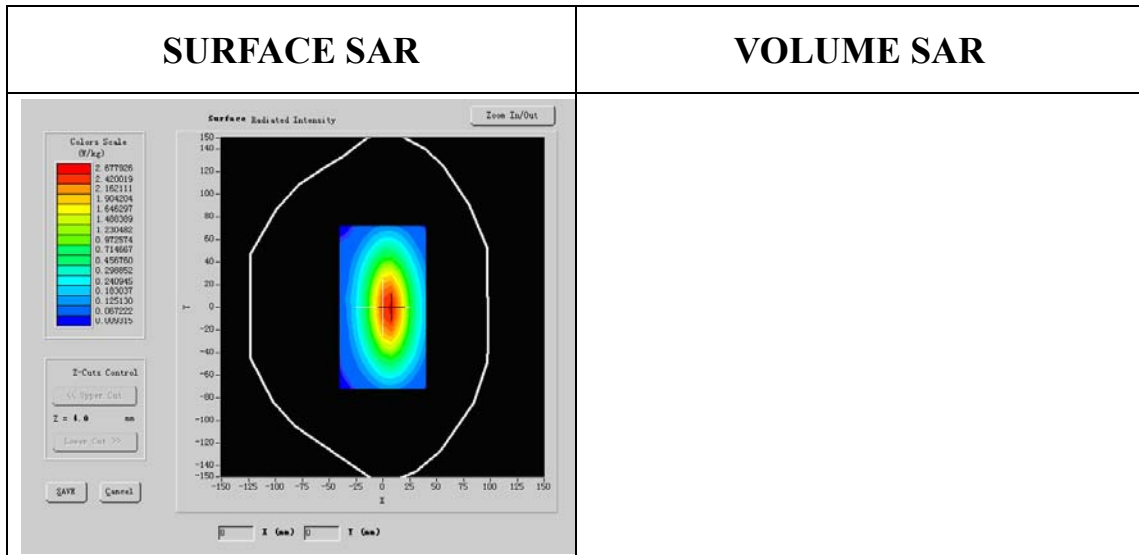
Phantom File	surf_sam_plan.txt
Phantom	Validation plane
Device Position	
Band	835MHz
Channels	
Signal	CW

B. SAR Measurement Results

Band SAR

Frequency (MHz)	835.000000
Relative permittivity (real part)	40.490002
Relative permittivity	15.070000

Conductivity (S/m)	0.983918
Power Drift (%)	-0.050000
Ambient Temperature:	22.4°C
Liquid Temperature:	22.5°C
ConvF:	28.479,25.214,27.196
Crest factor:	1:1



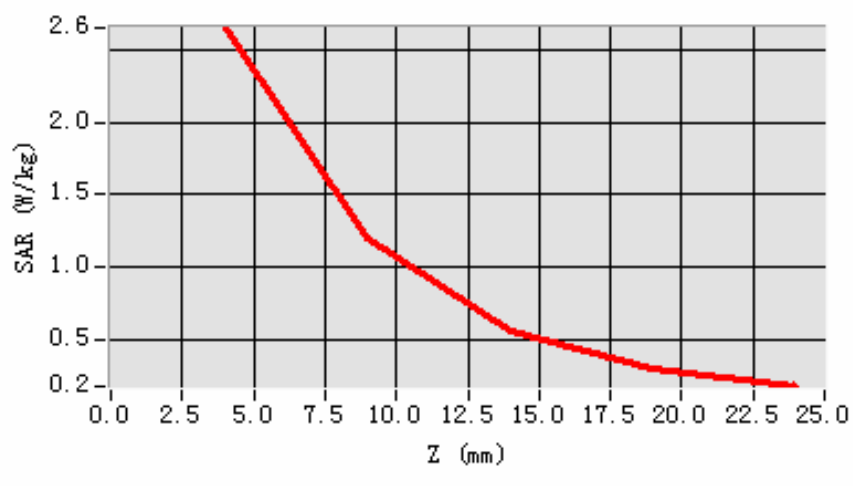
Maximum location: X=5.00, Y=1.00

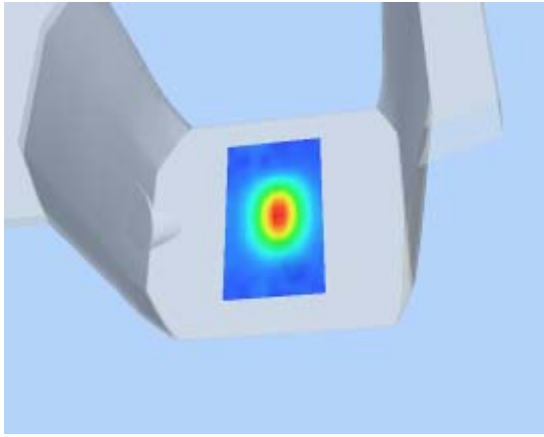
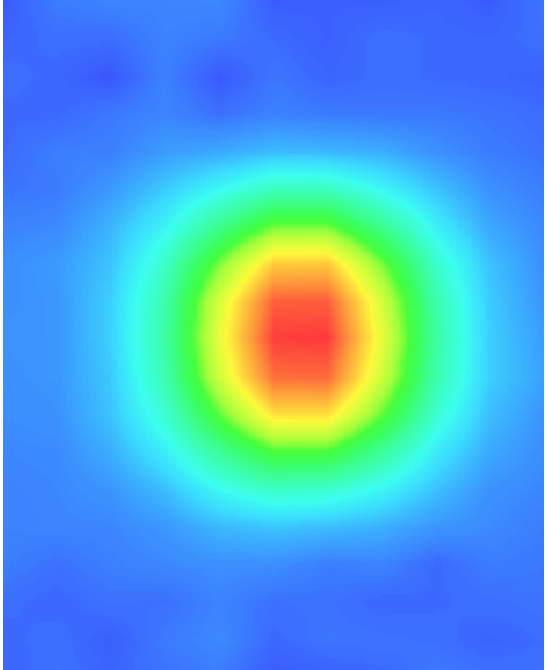
SAR 10g (W/Kg)	1.715223
SAR 1g (W/Kg)	2.677926

Z Axis Scan

Z (mm)	0.00	4.00	9.00	14.00	19.00
SAR (W/Kg)	0.0000	2.6486	1.2069	0.5583	0.3002

SAR, Z Axis Scan (X = 5, Y = 1)



3D scen shot	Hot spot position
	

System Performance Check Data(Head)

Type: Phone measurement (Complete)

Area scan resolution: dx=8mm,dy=8mm

Zoom scan resolution: dx=8mm, dy=8mm, dz=5mm

Date of measurement: 17/9/2010

Measurement duration: 13 minutes 27 seconds

A. Experimental conditions.

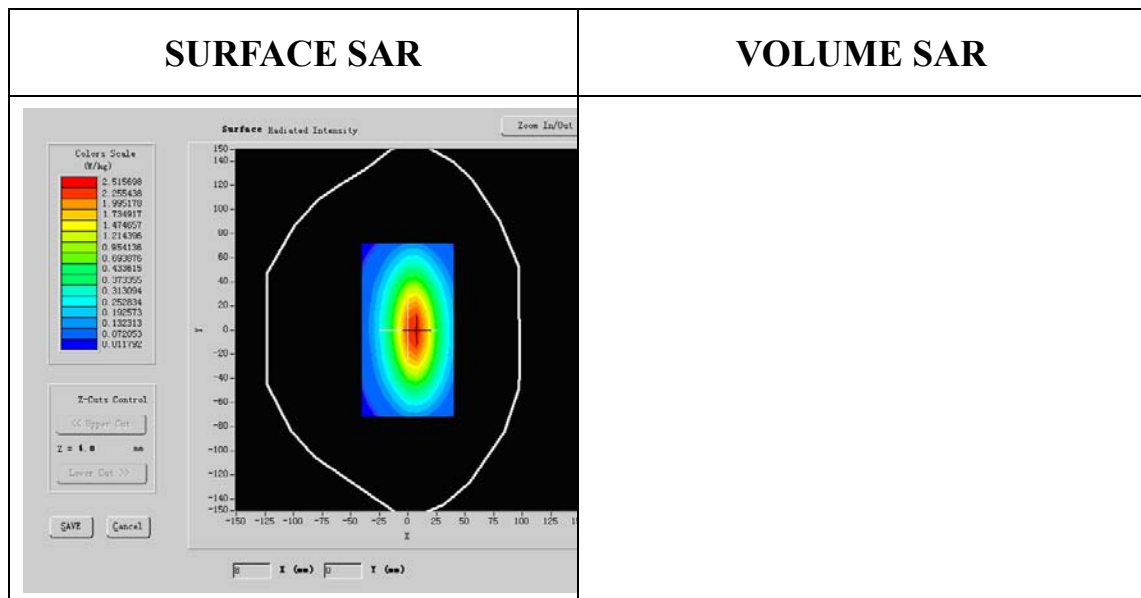
Phantom File	surf_sam_plan.txt
Phantom	Validation plane
Device Position	
Band	1800MHz
Channels	
Signal	CW

B. SAR Measurement Results

Band SAR:

Frequency (MHz)	1800.000000
Relative permittivity (real part)	38.509998
Relative permittivity	15.070000

Conductivity (S/m)	1.321229
Power Drift (%)	-0.140000
Ambient Temperature:	22.3°C
Liquid Temperature:	22.6°C
ConvF:	40.136,34.843,38.721
Crest factor:	1:1



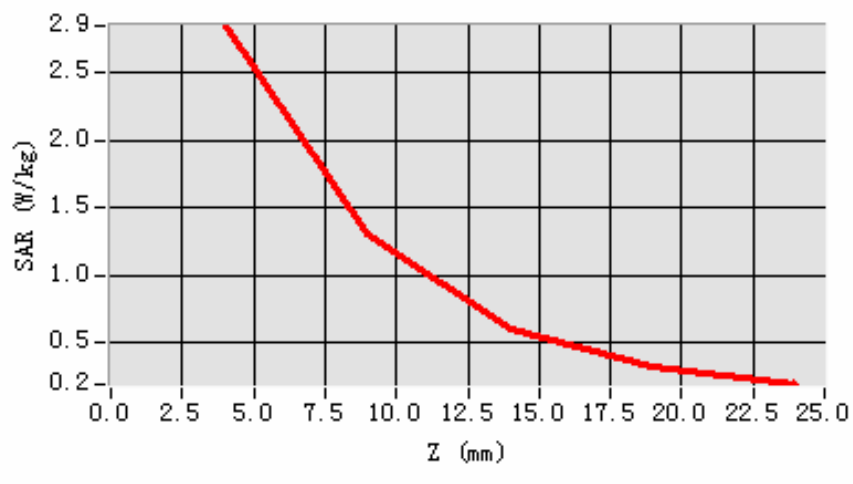
Maximum location: X=5.00, Y=1.00

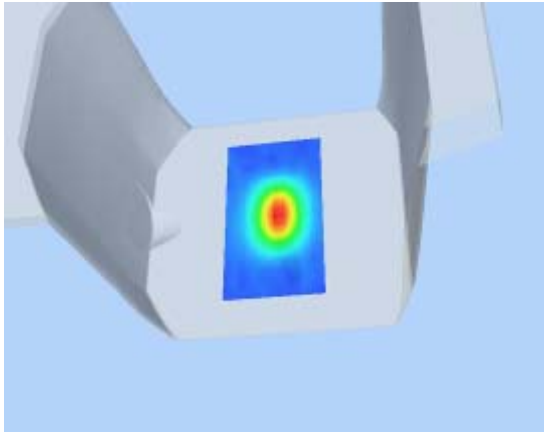
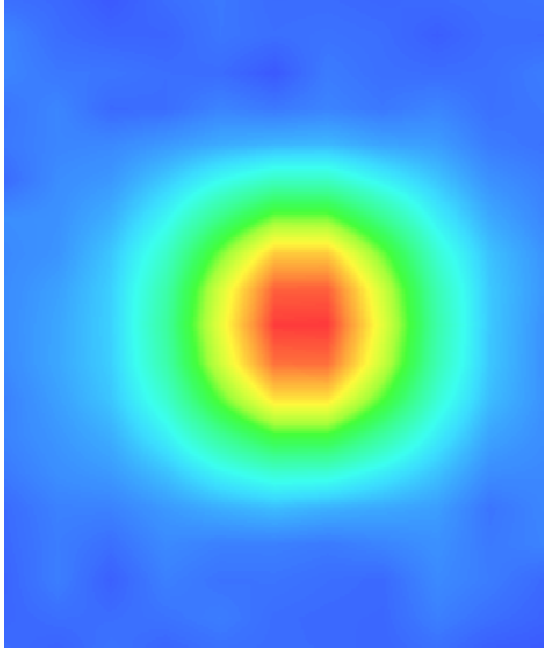
SAR 10g (W/Kg)	4.910003
SAR 1g (W/Kg)	8.455521

Z Axis Scan

Z (mm)	0.00	4.00	9.00	14.00	19.00
SAR (W/Kg)	0.0000	2.8536	1.3061	0.6041	0.3211

SAR, Z Axis Scan (X = 5, Y = 1)



3D scen shot	Hot spot position
	

System Performance Check Data(Body)

Type: Phone measurement (Complete)

Area scan resolution: dx=8mm,dy=8mm

Zoom scan resolution: dx=8mm, dy=8mm, dz=5mm

Date of measurement: 17/9/2010

Measurement duration: 13 minutes 27 seconds

A. Experimental conditions.

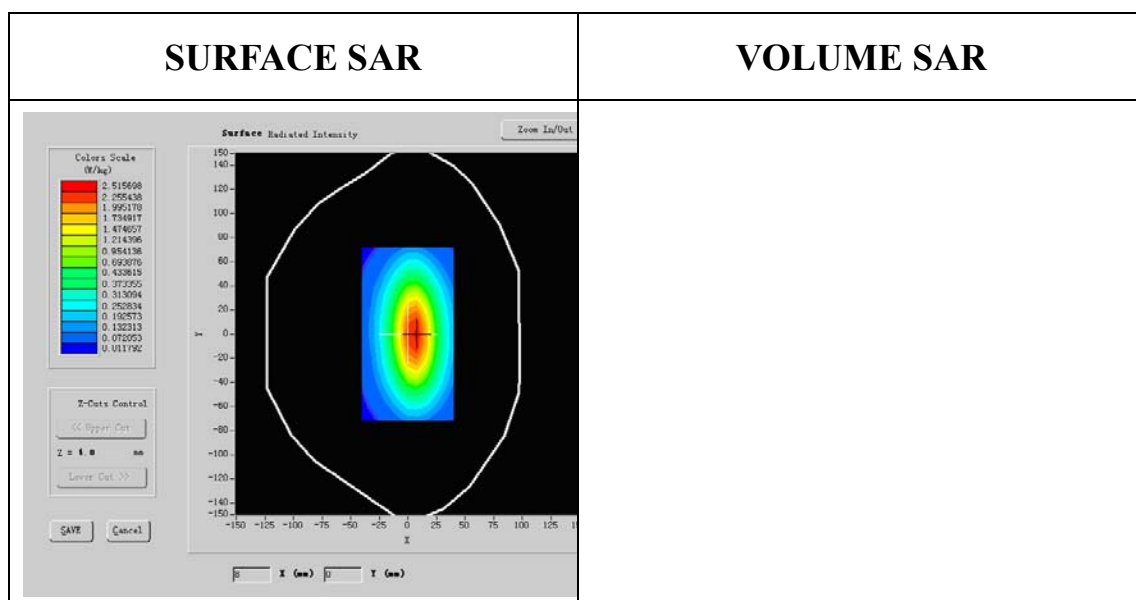
Phantom File	surf_sam_plan.txt
Phantom	Validation plane
Device Position	
Band	1800MHz
Channels	
Signal	CW

B. SAR Measurement Results

Band SAR:

Frequency (MHz)	1800.000000
Relative permittivity (real part)	52.548876
Relative permittivity	15.070000

Conductivity (S/m)	1.573978
Power Drift (%)	-0.140000
Ambient Temperature:	22.3°C
Liquid Temperature:	22.6°C
ConvF:	40.136,34.843,38.721
Crest factor:	1:1



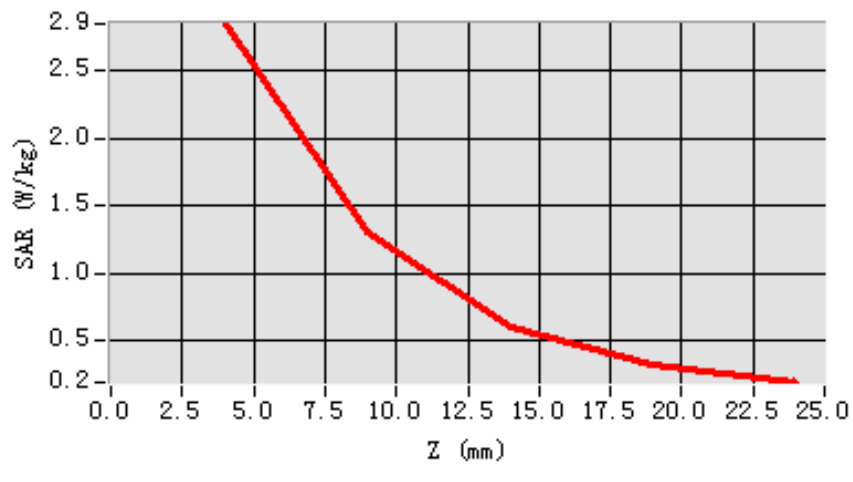
Maximum location: X=5.00, Y=1.00

SAR 10g (W/Kg)	4.910003
SAR 1g (W/Kg)	8.455521

Z Axis Scan

Z (mm)	0.00	4.00	9.00	14.00	19.00
SAR (W/Kg)	0.0000	2.8536	1.3061	0.6041	0.3211

SAR, Z Axis Scan (X = 5, Y = 1)



3D scen shot	Hot spot position
