


Lenovo

Lenovo Vibe B

Quick Start Guide

Lenovo A2016b30

 Read this guide carefully before using your smartphone.

Reading before using your smartphone

For your safety

Before assembling, charging or using your mobile device for the first time, please read the important product safety and legal information provided with your product.

Usage

This phone supports apps and services that may use a lot of data, so make sure your data plan meets your needs. Contact your service provider for details. Certain apps and features may not be available in all countries.

Electrical requirements

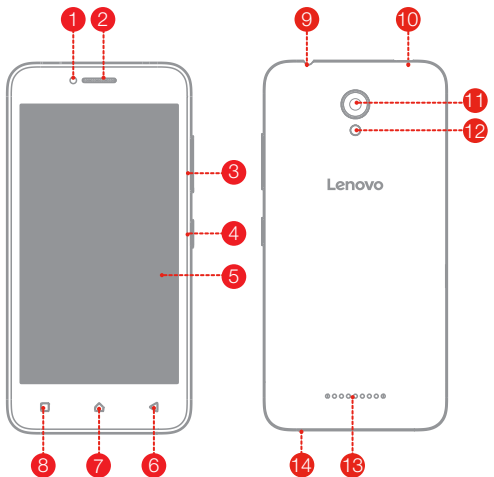
Battery: 7.6 Wh 2000 mAh

Adapter: AC

Entrance: 100-240 V AC 50/60 Hz 0.13 A

Exit: 5.0 V DC 1.0A

First glance



- | | | |
|------------------------|-----------------------|---------------------|
| 1 Front-facing camera | 2 Receiver | 3 Volume buttons |
| 4 On/Off button | 5 Touch screen | 6 Back button |
| 7 Home button | 8 Multitask button | 9 Headset connector |
| 10 Micro USB connector | 11 Rear-facing camera | 12 Flash |
| 13 Speaker | 14 Microphone | |

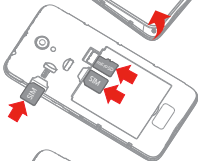
Preparing your smartphone

You must insert the Micro-SIM card provided by your carrier to use cellular services. Set up your smartphone as shown.

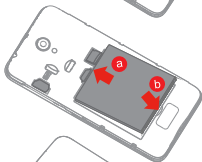
Step 1. Open the back cover.



Step 2. Insert the Micro-SIM cards and the microSD card.



Step 3. Install the battery.
a. Align the battery connectors on the battery with the pins in the battery compartment.
b. Push the battery down into place.



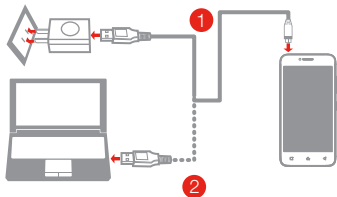
Step 4. Install the back cover.



Always turn off your smartphone first before you insert or remove a Micro-SIM card. Insert or remove a Micro-SIM card with your smartphone on may damage your Micro-SIM card or smartphone permanently.

Charging the battery

Charge the battery as shown.



Method 1. Connect your smartphone to a power outlet using the cable and USB power adapter that come with your smartphone.

Method 2. Connect your smartphone to a computer using the cable that comes with your smartphone.



Low battery power

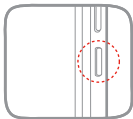


Fully charged



Charging

Turning on or turning off your smartphone



Turn on: Press and hold the On/Off button until the Lenovo logo appears.

Turn off: Press and hold the On/Off button for a few seconds, then tap **Power off and OK**.

Federal Communication Commission Interference Statement

This device complies with part 15 of the FCC Rules. Operation is subject to the following two conditions: (1) This device may not cause harmful interference, and (2) this device must accept any interference received, including interference that may cause undesired operation.

This device has been tested and found to comply with the limits for a Class B digital device, pursuant to Part 15 of the FCC Rules. These limits are designed to provide reasonable protection against harmful interference in a residential installation. This equipment generates, uses, and can radiate radio frequency energy, and, if not installed and used in accordance with the instructions, may cause harmful interference to radio communications. However, there is no guarantee that interference will not occur in a particular installation. If this equipment does cause harmful interference to radio or television reception, which can be determined by turning the equipment off and on, the user is encouraged to try to correct the interference by one or more of the following measures:

- Reorient or relocate the receiving antenna.
- Increase the separation between the equipment and receiver.
- Connect the equipment into an outlet on a circuit different from that to which the receiver is connected.
- Consult the dealer or an experienced radio/TV technician for help.

FCC Caution:

- Any Changes or modifications not expressly approved by the party responsible for compliance could void the user's authority to operate the equipment.
- The antenna(s) used for this transmitter must not be co-located or operating in conjunction with any other antenna or transmitter.
- The country code selection is for non-US model only and is not available to all US model. Per FCC regulation, all WiFi product marketed in US must fixed to US operation channels only.

► RF Exposure Information (SAR)

This device meets the government's requirements for exposure to radio waves. This device is designed and manufactured not to exceed the emission limits for exposure to radio frequency (RF) energy set by the Federal Communications Commission of the U.S. Government.

The exposure standard for wireless device employs a unit of measurement known as the Specific Absorption Rate, or SAR. The SAR limit set by the FCC is 1.6W/kg. Tests for SAR are conducted using standard operating positions accepted by the FCC with the device transmitting at its highest certified power level in all tested frequency bands. Although the SAR is determined at the highest certified power level, the actual SAR level of the device while operating can be well below the maximum value. This is because the device is designed to operate at multiple power levels so as to use only the power required to reach the network. In general, the closer you are to a wireless base station antenna, the lower the power output.

The highest SAR value for the model device as reported to the FCC when tested for use at the ear is 1.00 W/kg and when worn on the body, as described in this user guide, is 1.31 W/kg (Body-worn measurements differ among device models, depending upon available accessories and FCC requirements.)

While there may be differences between the SAR levels of various devices and at various positions, they all meet the government requirement.

The FCC has granted an Equipment Authorization for this model device with all reported SAR levels evaluated as in compliance with the FCC RF exposure guidelines. SAR information on this model device is on file with the FCC and can be found under the Display Grant section of www.fcc.gov/oet/ea/fccid after searching on FCC ID: **YCNA2016B30**.

For body worn operation, this device has been tested and meets the FCC RF exposure guidelines for use with an accessory that contains no metal and be positioned a minimum of 1.0cm from the body. Use of other accessories may not ensure compliance with FCC RF exposure guidelines. If you do not use a body-worn accessory and are not holding the device at the ear, position the handset a minimum of 1.0cm from your body when the device is switched on.

Specific Absorption Rate (FCC)

YOUR MOBILE DEVICE MEETS FCC LIMITS FOR EXPOSURE TO RADIO WAVES.

Your mobile device is a radio transmitter and receiver. It is designed not to exceed the limits for exposure to radio waves (radio frequency electromagnetic fields) adopted by the Federal Communications Commission (FCC). These limits include a substantial safety margin designed to assure the safety of all persons, regardless of age and health.

The radio wave exposure guidelines use a unit of measurement known as the Specific Absorption Rate, or SAR. The SAR limit for mobile devices is 1.6 W/kg.

Tests for SAR are conducted using standard operating positions with the device transmitting at its highest certified power level in all tested frequency bands. The highest SAR values under the FCC guidelines for your device model are listed below:

Head SAR	GSM 850 MHz, Wi-Fi, Bluetooth	1.00W/kg
Body-worn SAR	GSM 850 MHz, Wi-Fi, Bluetooth	1.31W/kg

During use, the actual SAR values for your device are usually well below the values stated. This is because, for purposes of system efficiency and to minimize interference on the network, the operating power of your mobile device is automatically decreased when full power is not needed for the call. The lower the power output of the device, the lower its SAR value.

If you are interested in further reducing your RF exposure then you can easily do so by limiting your usage or simply using a hands-free kit to keep the device away from the head and body.

Additional information can be found at www.lenovo.com.

Copyright and trademarks

Certain features, services and applications are network dependent and may not be available in all areas; additional terms, conditions and/or charges may apply. Contact your service provider for details. All features, functionality, and other product specifications, as well as the information contained in this guide, are based upon the latest available information and believed to be accurate at the time of printing. Lenovo reserves the right to change or modify any information or specifications without notice or obligation.

Note: The images in this guide are examples only.

Lenovo and the Lenovo logo are trademarks of Lenovo in the United States, other countries, or both.

Android, Google and other trademarks are owned by Google Inc. The Android robot is reproduced or modified from work created and shared by Google and used according to terms described in the Creative Commons 3.0 Attribution License. All other product or service names are the property of their respective owners.

© Copyright Lenovo 2016.

Product ID: Lenovo Vibe B (Model Lenovo A2016b30)

Learning more

Getting support

To get support on network service and billing, contact your wireless network operator. To learn how to use your smartphone and view its technical specifications, go to <http://support.lenovo.com>.

Downloading publications

To obtain the latest smartphone manuals, go to:
<http://support.lenovo.com>

Accessing your *User Guide*

Your *User Guide* contains detailed information about your smartphone. To access your *User Guide*, go to <http://support.lenovo.com> and follow the instructions on the screen.



This product meets the applicable national or international RF exposure guidance (SAR guideline) when used normally against your head or, when worn or carried, at a distance of 1 cm from the body. The SAR guideline includes a considerable safety margin designed to assure the safety of all persons, regardless of age and health.

Reduce | Reuse | Recycle



V1.0_20160617



XXXXXXXXXX

Printed in China

Reading before using your smartphone

For your safety

Before assembling, charging or using your mobile device for the first time, please read the important product safety and legal information provided with your product.

Usage

This phone supports apps and services that may use a lot of data, so make sure your data plan meets your needs. Contact your service provider for details. Certain apps and features may not be available in all countries.

Electrical requirements

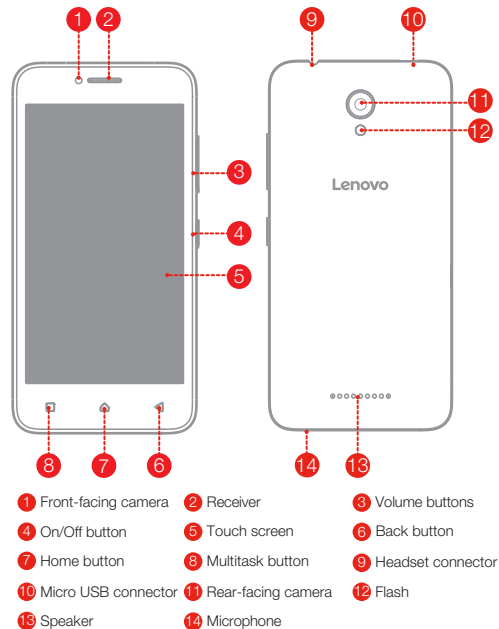
Battery: 7.6 Wh 2000 mAh

Adapter: AC

Entrance: 100-240 V AC 50/60 Hz 0.13 A

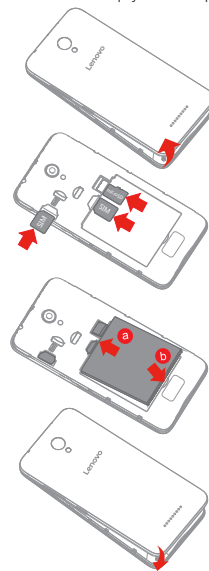
Exit: 5.0 V DC 1.0A

First glance



Preparing your smartphone

You must insert the Micro-SIM card provided by your carrier to use cellular services. Set up your smartphone as shown.



Step 1. Open the back cover.

Step 2. Insert the Micro-SIM cards and the microSD card.

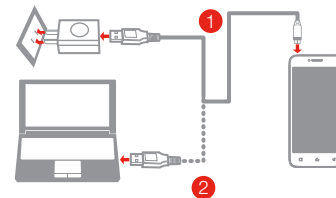
Step 3. Install the battery.
a. Align the battery connectors on the battery with the pins in the battery compartment.
b. Push the battery down into place.

Step 4. Install the back cover.

Always turn off your smartphone first before you insert or remove a Micro-SIM card. Insert or remove a Micro-SIM card with your smartphone on may damage your Micro-SIM card or smartphone permanently.

Charging the battery

Charge the battery as shown.

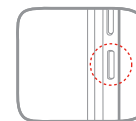


Method 1. Connect your smartphone to a power outlet using the cable and USB power adapter that come with your smartphone.

Method 2. Connect your smartphone to a computer using the cable that comes with your smartphone.

Low battery power Fully charged Charging

Turning on or turning off your smartphone



Turn on: Press and hold the On/Off button until the Lenovo logo appears.

Turn off: Press and hold the On/Off button for a few seconds, then tap **Power off and OK**.

Lenovo Vibe B

Quick Start Guide

Lenovo A2016b30

Specific Absorption Rate (FCC)

YOUR MOBILE DEVICE MEETS FCC LIMITS FOR EXPOSURE TO RADIO WAVES.

Your mobile device is a radio transmitter and receiver. It is designed not to exceed the limits for exposure to radio waves (radio frequency electromagnetic fields) adopted by the Federal Communications Commission (FCC). These limits include a substantial safety margin designed to assure the safety of all persons, regardless of age and health.

The radio wave exposure guidelines use a unit of measurement known as the Specific Absorption Rate, or SAR. The SAR limit for mobile devices is 1.6 W/kg.

Tests for SAR are conducted using standard operating positions with the device transmitting at its highest certified power level in all tested frequency bands. The highest SAR values under the FCC guidelines for your device model are listed below:

Head SAR	GSM 850, Wi-Fi, Bluetooth	1.00W/kg
Body-worn SAR	GSM 850, Wi-Fi, Bluetooth	1.31W/kg

During use, the actual SAR values for your device are usually well below the values stated. This is because, for purposes of system efficiency and to minimize interference on the network, the operating power of your mobile device is automatically decreased when full power is not needed for the call. The lower the power output of the device, the lower its SAR value.

If you are interested in further reducing your RF exposure then you can easily do so by limiting your usage or simply using a hands-free kit to keep the device away from the head and body.

Additional information can be found at www.lenovo.com.

Copyright and trademarks

Certain features, services and applications are network dependent and may not be available in all areas; additional terms, conditions and/or charges may apply. Contact your service provider for details. All features, functionality, and other product specifications, as well as the information contained in this guide, are based upon the latest available information and believed to be accurate at the time of printing. Lenovo reserves the right to change or modify any information or specifications without notice or obligation.

Note: The images in this guide are examples only.

Lenovo and the Lenovo logo are trademarks of Lenovo in the United States, other countries, or both.

Android, Google and other trademarks are owned by Google Inc. The Android robot is reproduced or modified from work created and shared by Google and used according to terms described in the Creative Commons 3.0 Attribution License. All other product or service names are the property of their respective owners.

© Copyright Lenovo 2016.

Product ID: Lenovo Vibe B (Model Lenovo A2016b30)

Learning more

Getting support

To get support on network service and billing, contact your wireless network operator. To learn how to use your smartphone and view its technical specifications, go to <http://support.lenovo.com>.

Downloading publications

To obtain the latest smartphone manuals, go to: <http://support.lenovo.com>

Accessing your User Guide

Your *User Guide* contains detailed information about your smartphone. To access your *User Guide*, go to <http://support.lenovo.com> and follow the instructions on the screen.

SAR This product meets the applicable national or international RF exposure guidance (SAR guideline) when used normally against your head or, when worn or carried, at a distance of 1.0cm from the body. The SAR guideline includes a considerable safety margin designed to assure the safety of all persons, regardless of age and health.

Read this guide carefully before using your smartphone.

Reduce | Reuse | Recycle



V1.0_20160617



XXXXXXXXXX

Printed in China