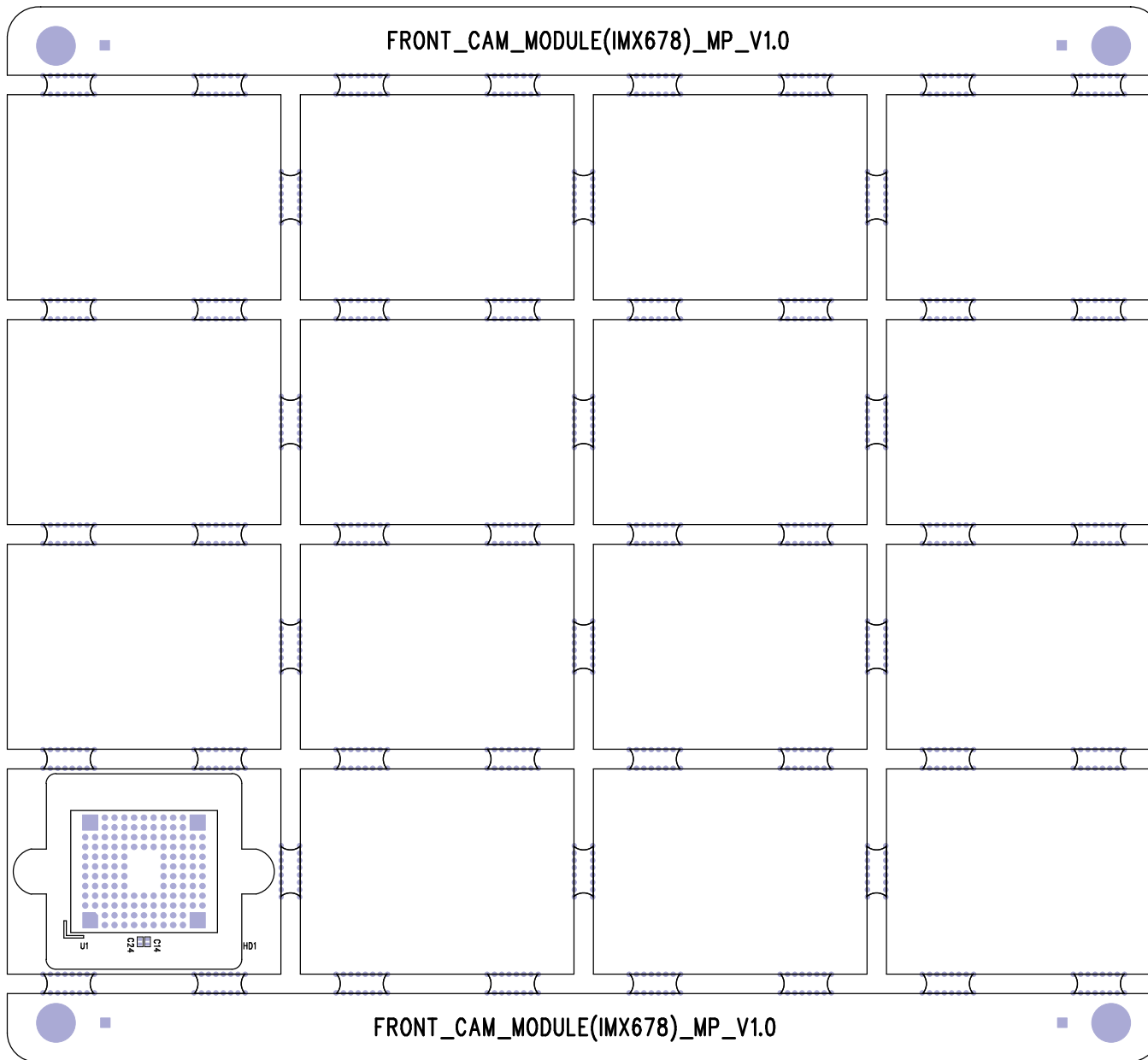


FRONT_CAM_MODULE(IMX678)_MP_V1.0



FRONT_CAM_MODULE(IMX678)_MP_V1.0

| | |
|--------------------------------------|------------------------------|
| MODEL : FRONT_CAM_MODULE(IMX678) | REV : MP_V1.0 |
| LAYER : TOP SOLDER 6L | THICKNESS : 1.0T |
| BOARD SIZE : 28x21mm(16ea)/118x108mm | DATE : 2023.09.20 |
| DESIGNER : Yulgon Lee | E-Mail : leeyg@pittasoft.com |

PCB SPECIFICATIONS

MODEL NAME : DR770X/DR970X Plus_DR800_MAIN(MP_V1.0)

BOARD SIZE : 126.5mm X 97.0mm

UNIT SIZE : 110.5mm X 31.0mm

DATE : 2023.09.20

LAYER_STACKUP 20um. S/R ENIG

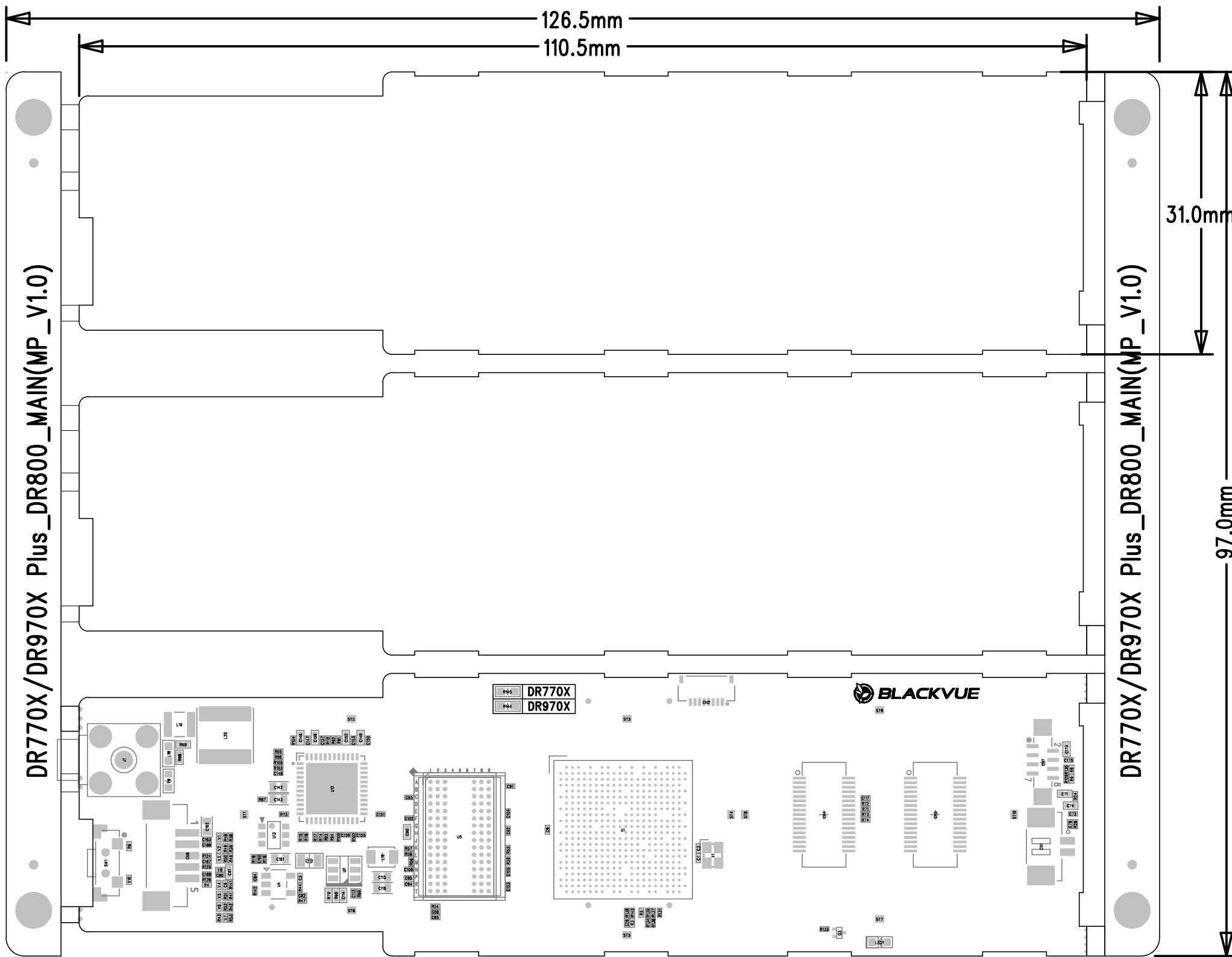
| | |
|-------------------|-----------------------|
| L1 TOP SIGNAL1 | 25um. ON OUTER LAYERS |
| | Dielectric 51um |
| L2 SIGNAL2 | 20um. ON INNER LAYERS |
| | Dielectric 77um |
| L3 SIGNAL3 | 22um. ON INNER LAYERS |
| | Dielectric 72um |
| L4 SIGNAL4 | 15um. ON INNER LAYERS |
| | CORE 600um |
| L5 SIGNAL5 | 15um. ON INNER LAYERS |
| | Dielectric 72um |
| L6 SIGNAL6 | 22um. ON INNER LAYERS |
| | Dielectric 77um |
| L7 SIGNAL7 | 20um. ON INNER LAYERS |
| | Dielectric 51um |
| L8 BOTTOM SIGNAL8 | 25um. ON OUTER LAYERS |

20um. S/R ENIG

| MATERIAL | FR4 | | | | |
|--------------------------|-------|----------|---------------|---------------|------------|
| IDENT COLORS | WHITE | | | | |
| MASK TYPE | BLU | | | | |
| FINISHED BOARD THICKNESS | 1.2T | | | | |
| Unit | | | | | |
| Impedance | Layer | Ref. GND | Pattern Width | Pattern Space | Distance W |
| 50 Ohm | | | | | |
| | | | | | |
| | | | | | |
| | | | | | |
| | | | | | |
| 90 Ohm | | | | | |
| | | | | | |
| | | | | | |
| 100 Ohm | | | | | |
| | | | | | |
| | | | | | |
| | | | | | |

F.E : 14

: mm
th GND



mm :
th END

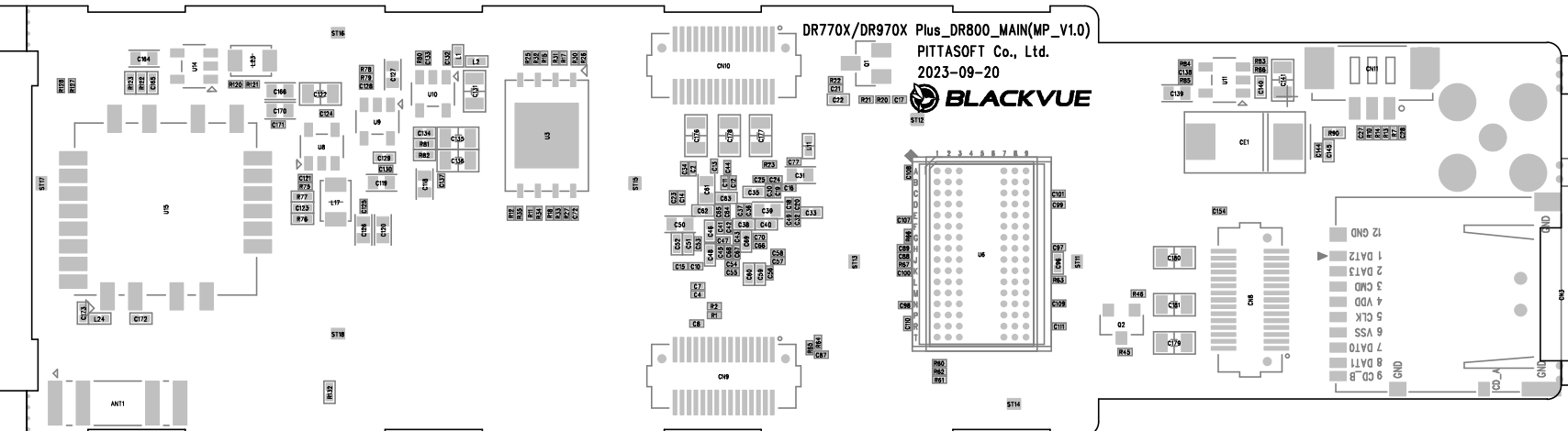
DR770X/DR970X Plus_DR800_MAIN(MP_V1.0)

DR770X/DR970X Plus_DR800_MAIN(MP_V1.0)

156.2mm
110.2mm

31.0mm

mm0.7e



PCB SPECIFICATIONS

MODEL NAME : DR770X\DR770X Plus_DR800_MAIN(MP_V1.0)
 BOARD SIZE : 126.5mm X 97.0mm
 UNIT SIZE : 110.5mm X 31.0mm
 DATE : 2023.09.20

LAYER_STACKUP 20um. 2\R ENG

| | |
|-------------------|-----------------------|
| L1 TOP SIGNAL1 | 25um. ON OUTER LAYERS |
| | Dielectric 51um |
| L2 SIGNAL2 | 20um. ON INNER LAYERS |
| | Dielectric 77um |
| L3 SIGNAL3 | 22um. ON INNER LAYERS |
| | Dielectric 72um |
| L4 SIGNAL4 | 15um. ON INNER LAYERS |
| | CORE 600um |
| L5 SIGNAL5 | 15um. ON INNER LAYERS |
| | Dielectric 72um |
| L6 SIGNAL6 | 22um. ON INNER LAYERS |
| | Dielectric 77um |
| L7 SIGNAL7 | 20um. ON INNER LAYERS |
| | Dielectric 51um |
| L8 BOTTOM SIGNAL8 | 25um. ON OUTER LAYERS |

20um. 2\R ENG

| Unit | | | | | |
|-----------|-------|----------|---------------|---------------|------------|
| Impedance | Layer | Ref. GND | Pattern Width | Pattern Space | Distance W |
| 50 Ohm | | | | | |
| | | | | | |
| | | | | | |
| | | | | | |
| 90 Ohm | | | | | |
| | | | | | |
| 100 Ohm | | | | | |
| | | | | | |
| | | | | | |

F.E. : 14

FINISHED BOARD THICKNESS 1.5T

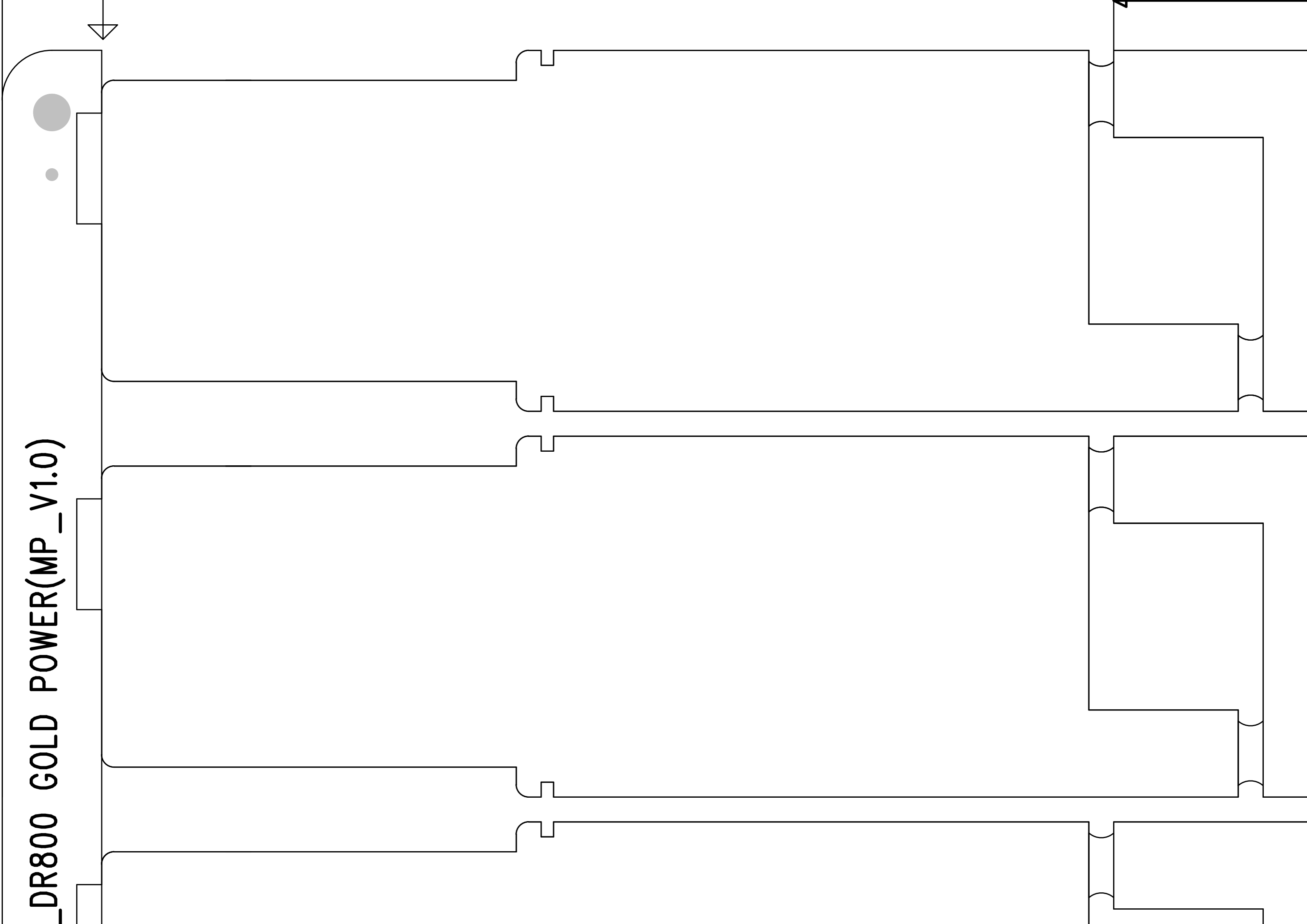
MASK TYPE BLU

IDENT COLORS WHITE

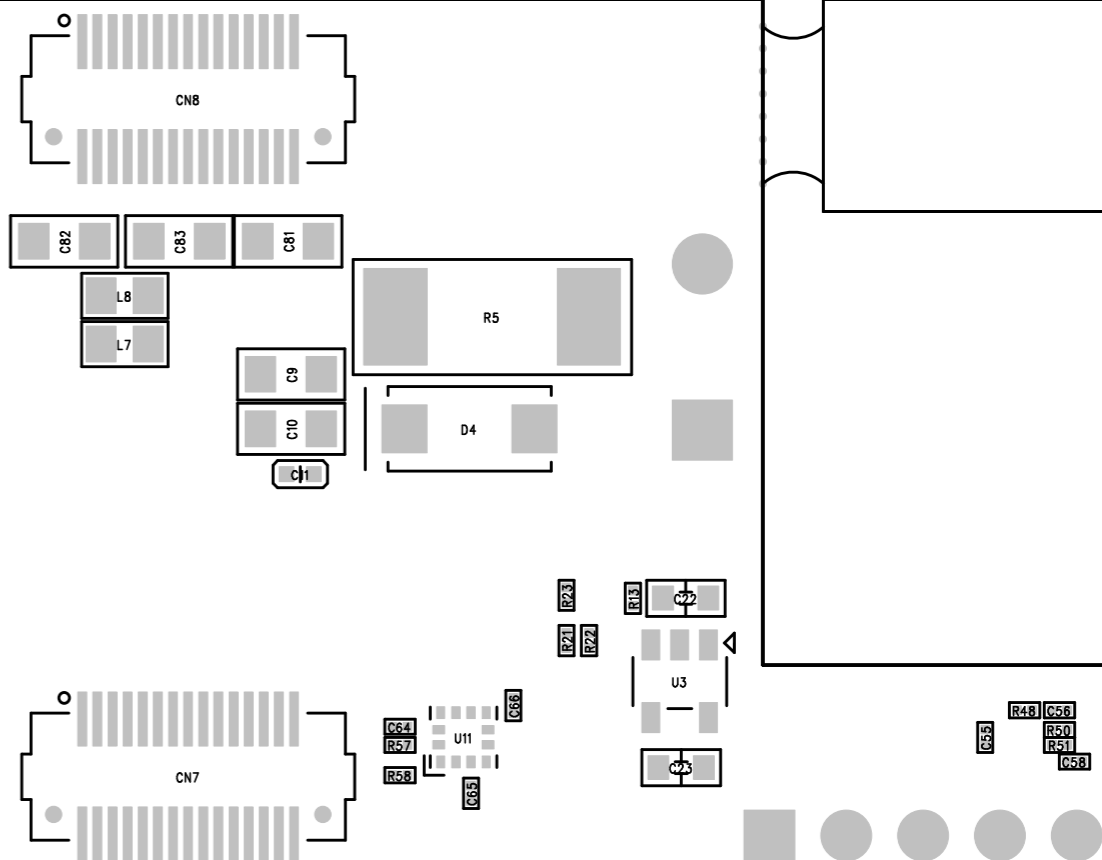
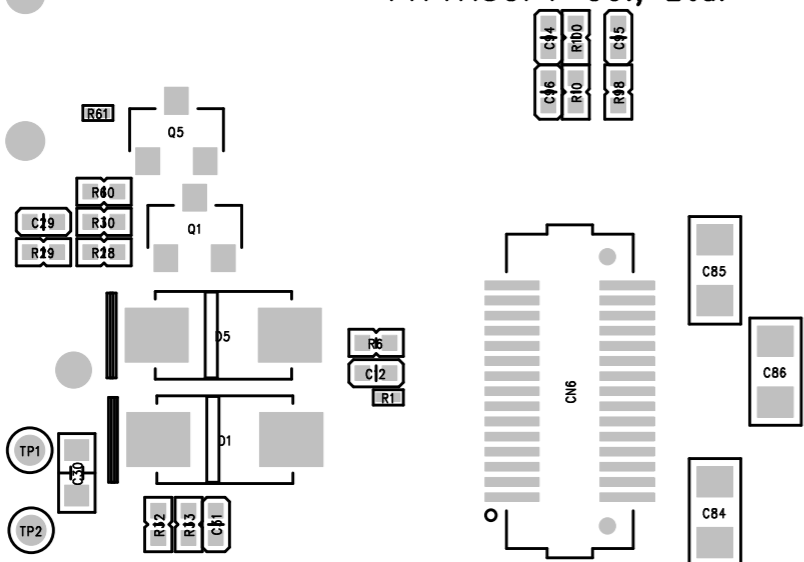
MATERIAL FRA



_DR800 GOLD POWER(MP_V1.0)



DR770X_DR970X_DR800 GOLD POWER(MP_V1.0)
2022.11.10
PITTASOFT Co., Ltd.



V-CUT

m



0.1 mm

V-CUT



91.5mm

MH10

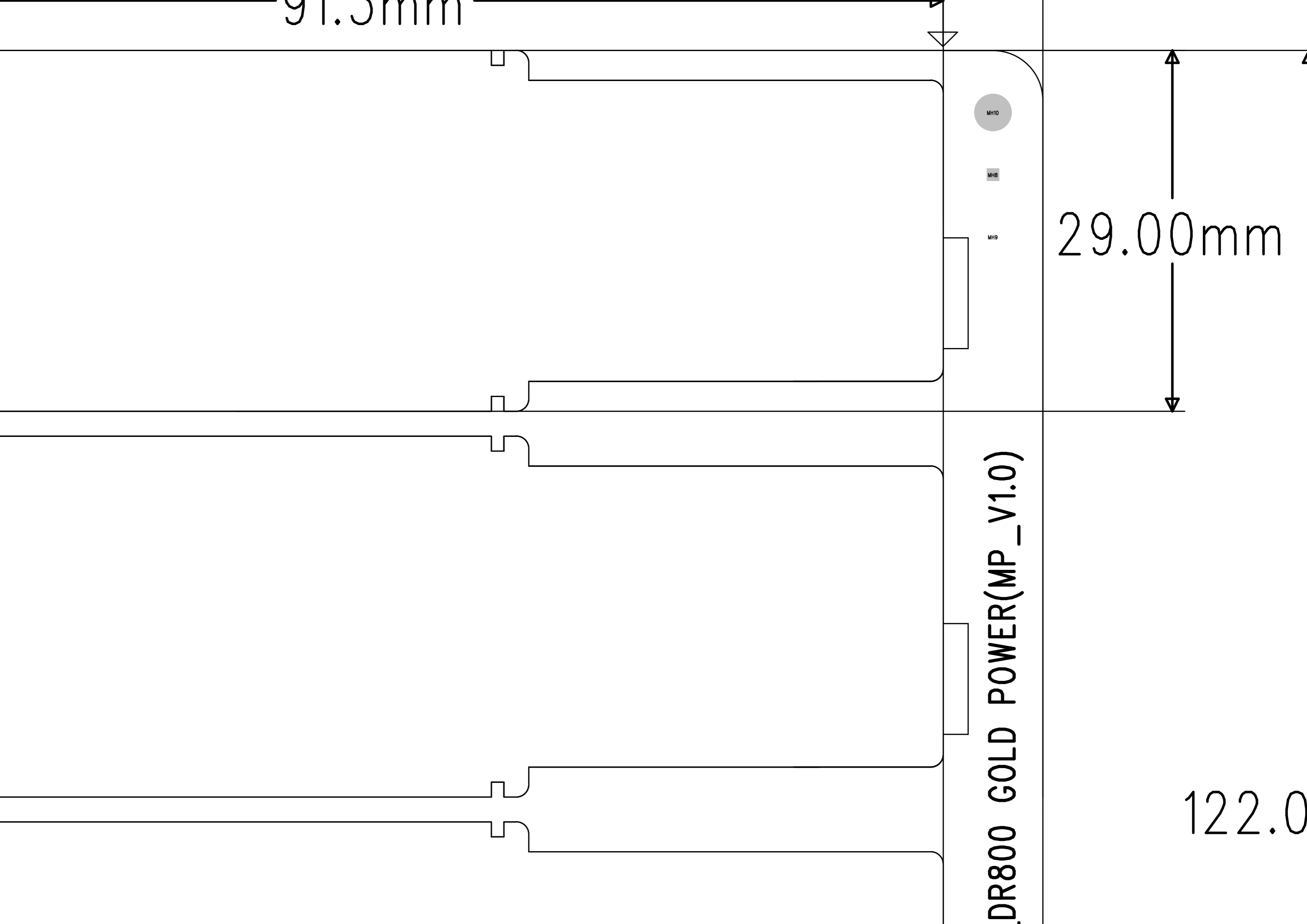
MH8

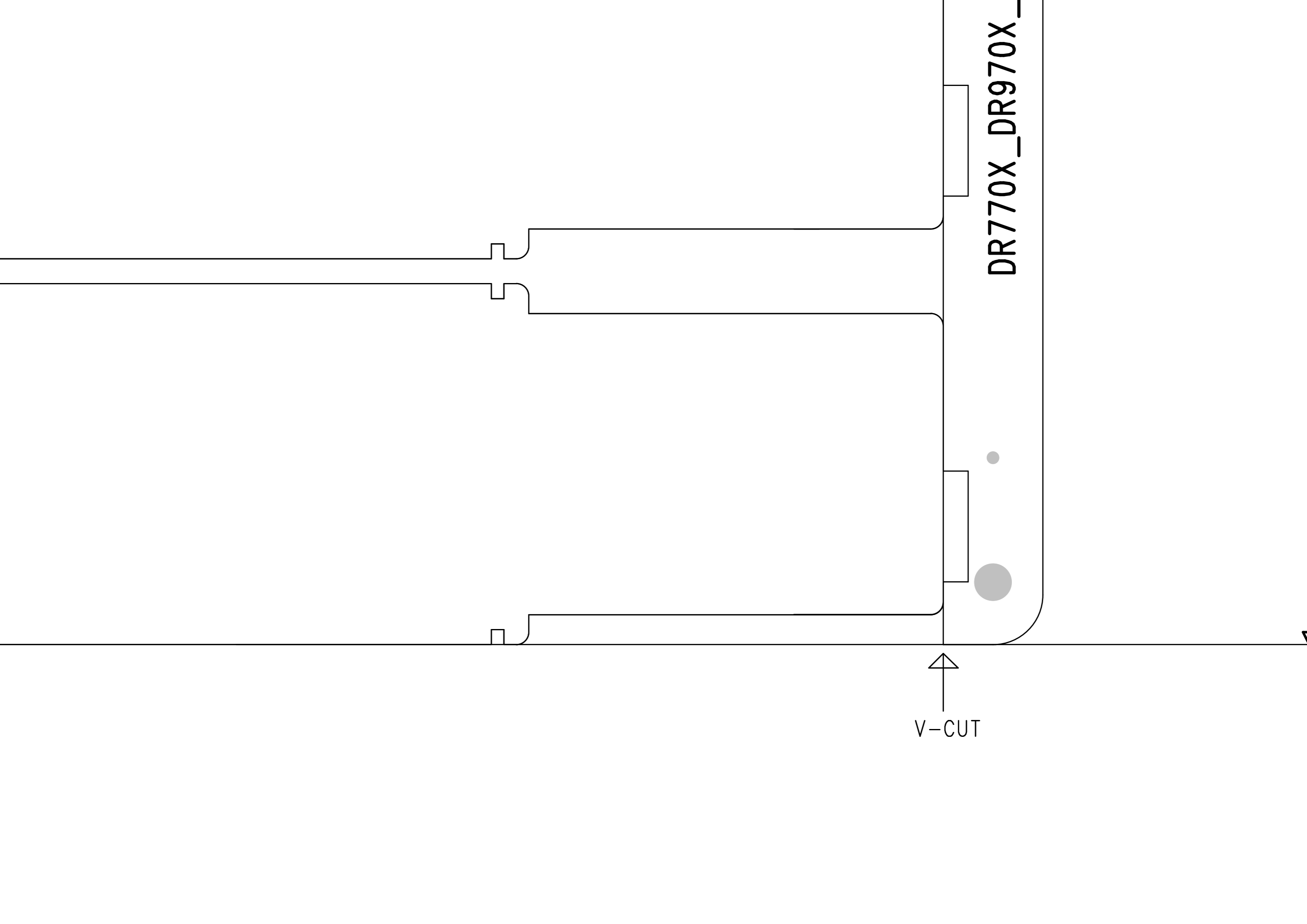
MH9

29.00mm

DR800 GOLD POWER(MP_V1.0)

122.0







0mm



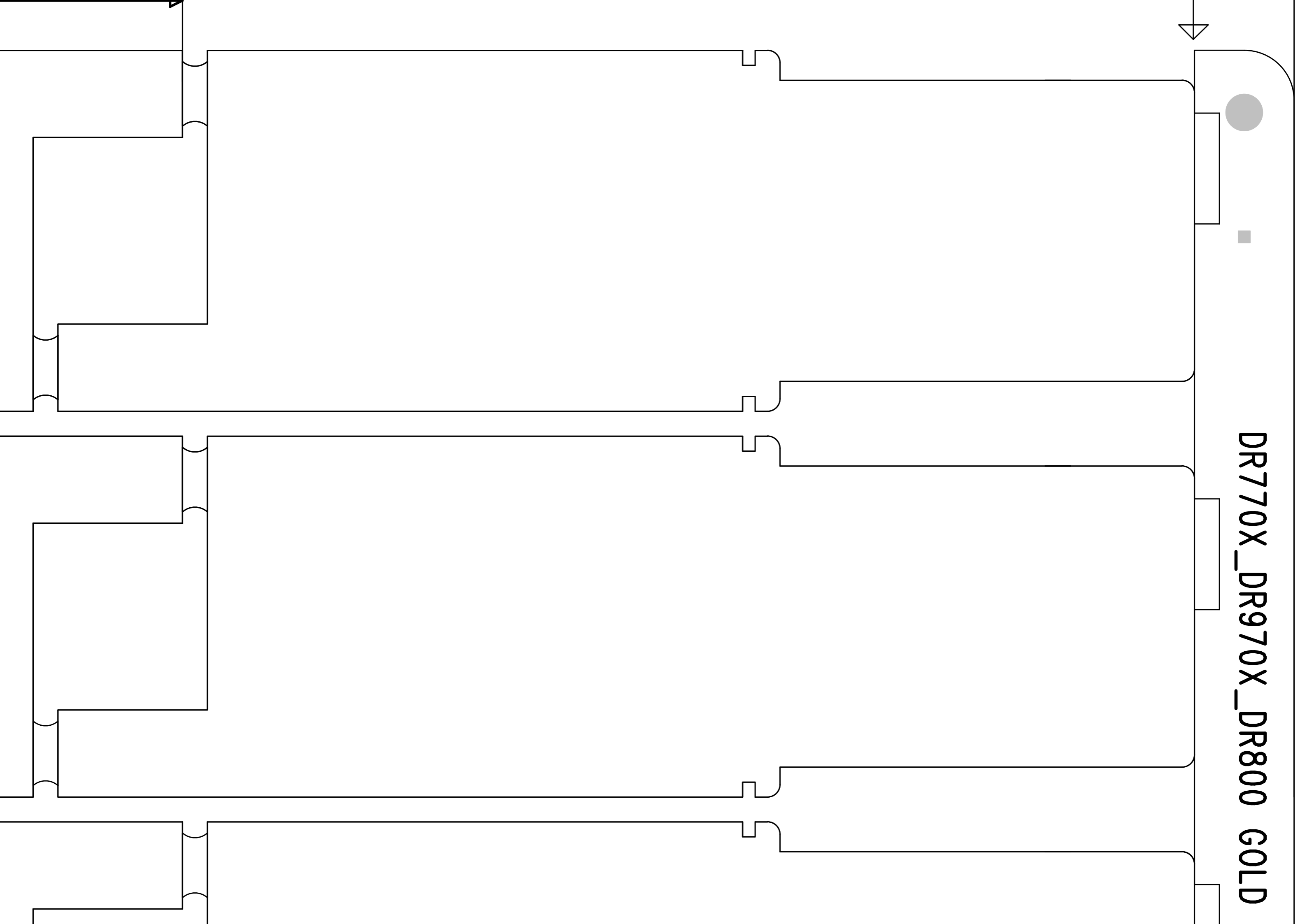
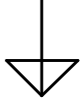
0.881m



1-00A

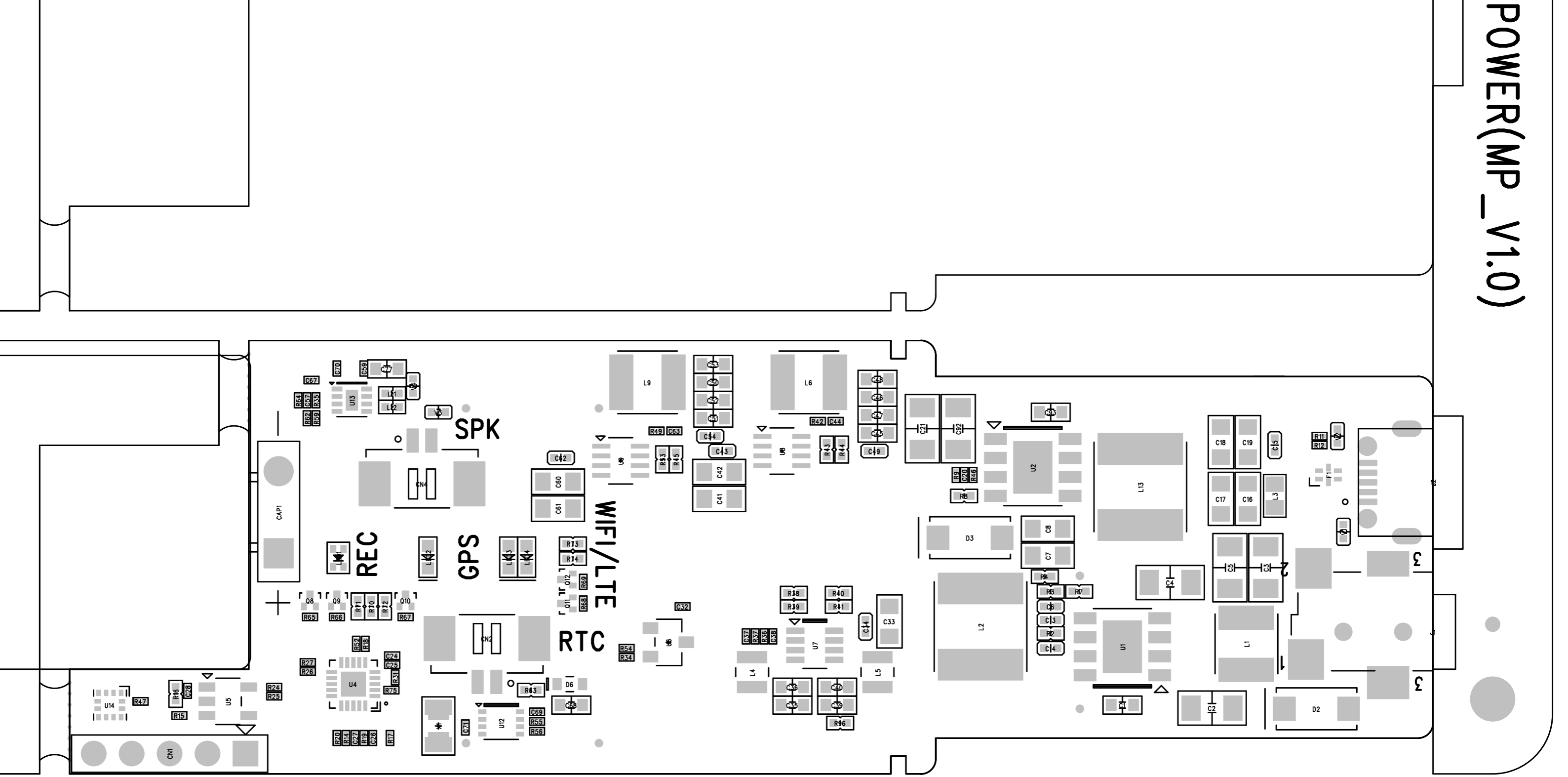


DR770X_DR970X_DR800 GOLD



POWER(MP_V1.0)

TUC-V



PCB SPECIFICATIONS

MODEL NAME : DR770X_DR970X_DR800 GOLD POWER(MP_V1.0)

BOARD SIZE : 188.6mm X 122.0mm

UNIT SIZE : 91.3mm X 29.0mm

DATE : 2022.11.10

LAYER_STACKUP

20um. 2\R ENIG

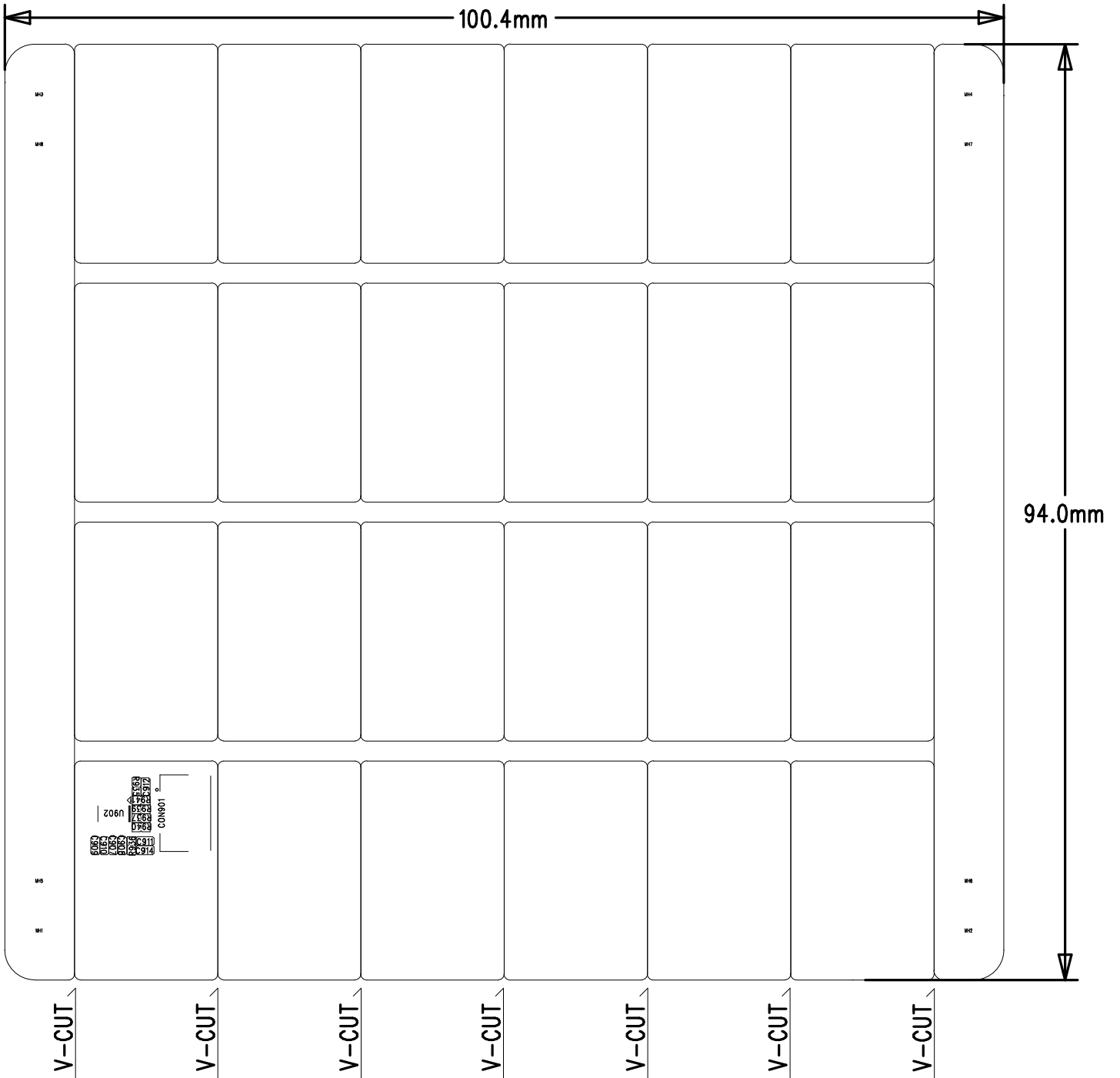
| | |
|----------------|------------------------|
| L1 TOP SIGNAL1 | 38um. 1\2oz+Plating |
| | 83um. PP) 1080 |
| L2 SIGNALS | 32um. 1oz INNER LAYERS |
| | 005 0.01 007 |

| | |
|------------------------|-------------------|
| 20um. 2\R ENIG | |
| 38um. 1\2oz+Plating | L6 BOTTOM SIGNAL6 |
| 83um. PP) 1080 | |
| 32um. 1oz INNER LAYERS | L5 SIGNAL5 |
| 203um. 0.2T CORE | |
| 32um. 1oz INNER LAYERS | L4 SIGNAL4 |
| 348um. PP) 7628 | |
| 32um. 1oz INNER LAYERS | L3 SIGNAL3 |
| 203um. 0.2T CORE | |

| Unit : mm | | | | | |
|-----------|-------|----------|---------------|---------------|-------------------|
| Impedance | Layer | Ref. GND | Pattern Width | Pattern Space | Distance With GND |
| 50 Ohm | | | | | |
| | | | | | |
| | | | | | |
| | | | | | |
| 90 Ohm | | | | | |
| | | | | | |
| | | | | | |
| | | | | | |
| 100 Ohm | | | | | |
| | | | | | |

| | |
|--------------------------|-------|
| FINISHED BOARD THICKNESS | 1.2T |
| MASK TYPE | |
| IDENT COLORS | WHITE |
| MATERIAL | FR4 |

| | | | | | |
|--|--|--|--|--|----------|
| | | | | | 100 Ohm |
| | | | | | |
| | | | | | F.E. : 0 |



Thickness : 1.0T