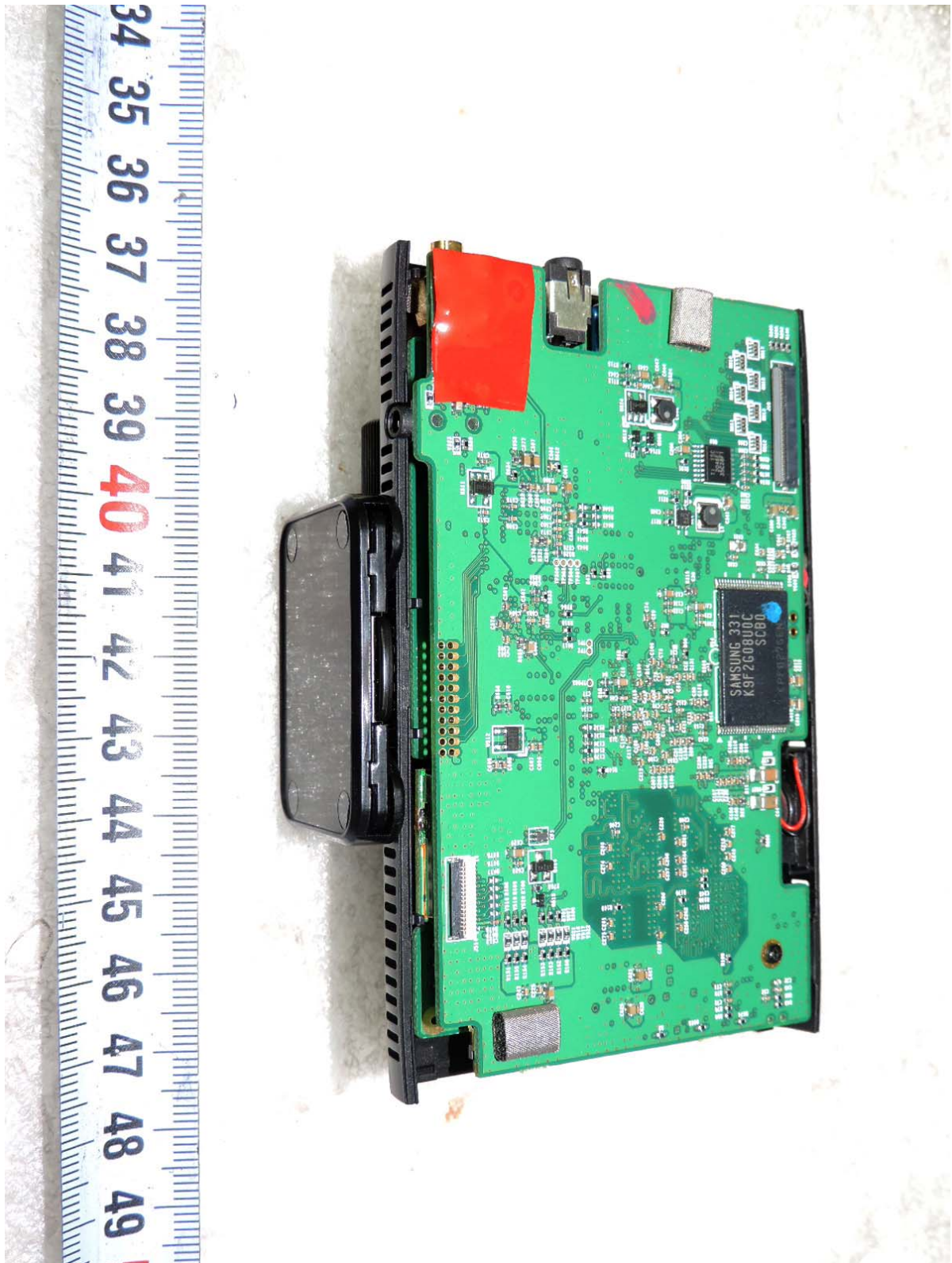


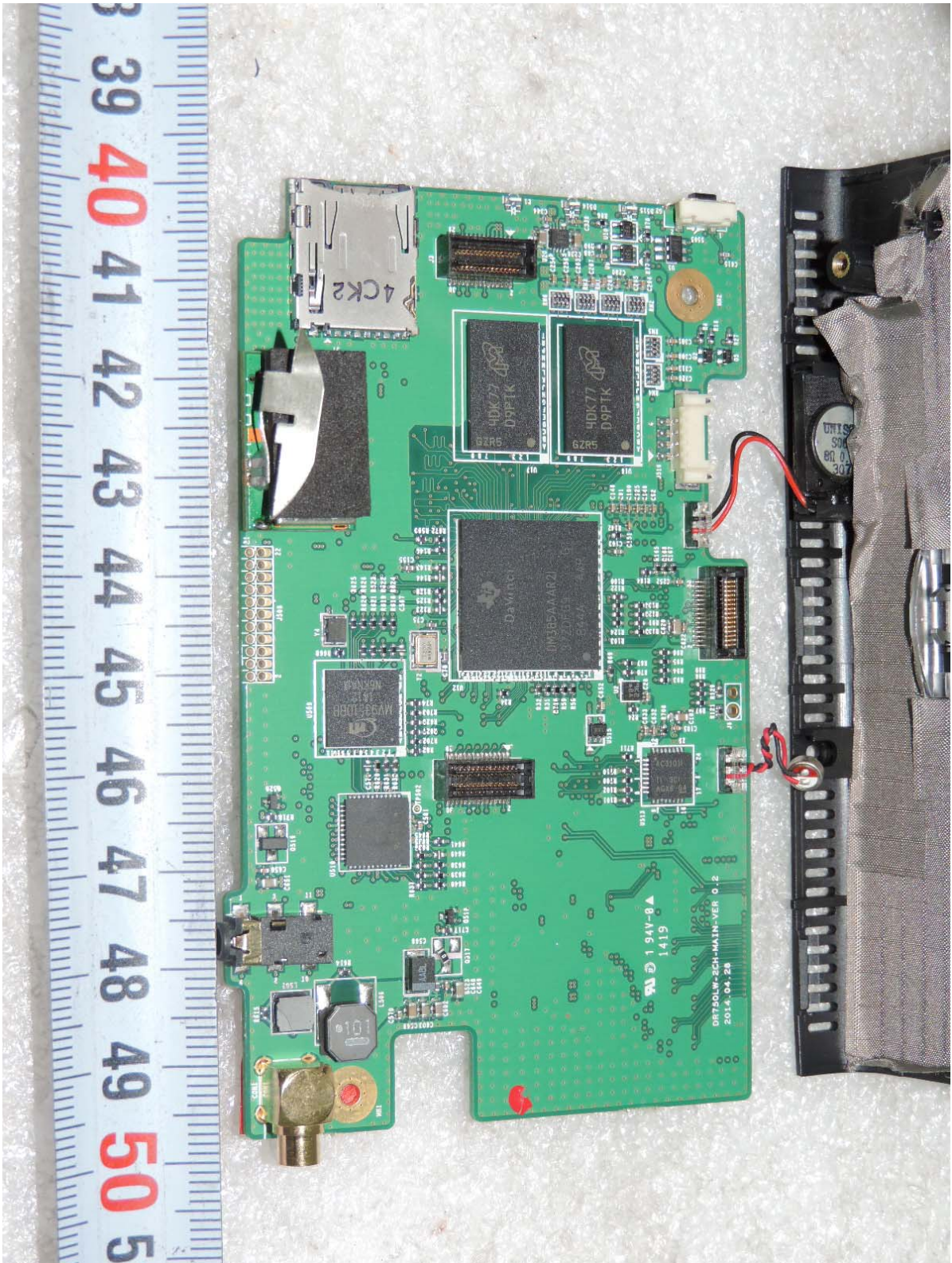
Front Camera - Inside view of EUT



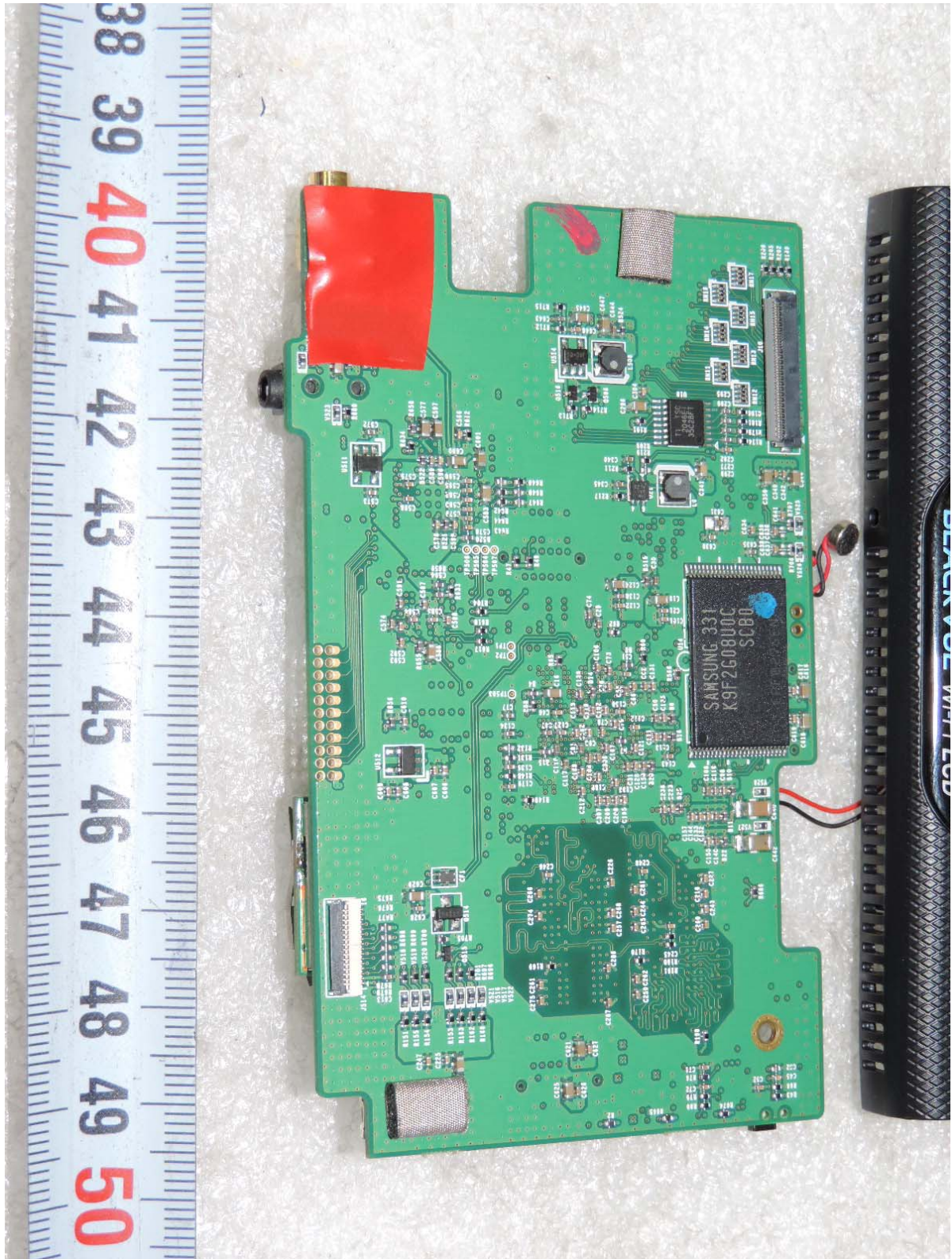
Front Camera - Inside view of EUT



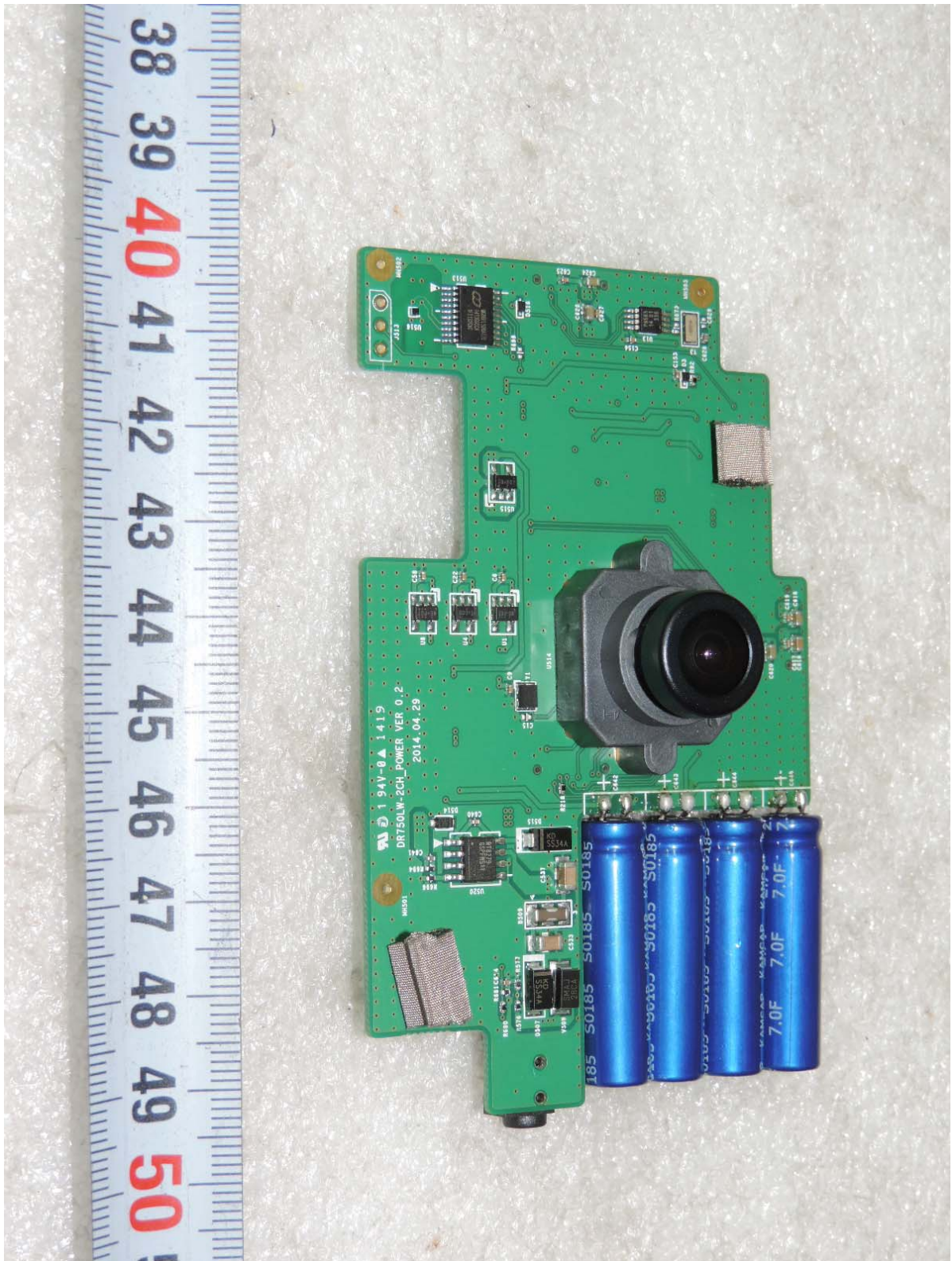
Front Camera - Top side view of main board



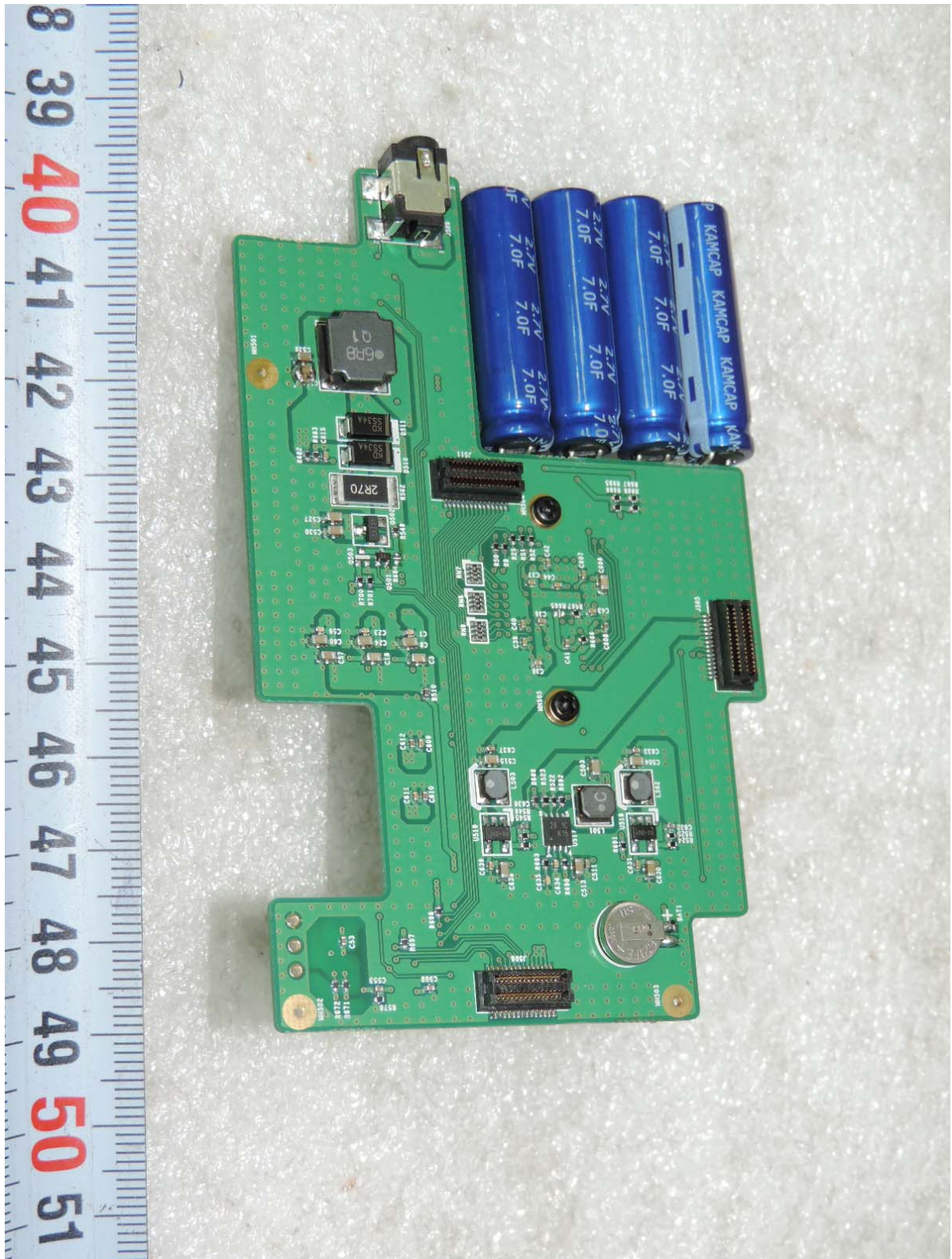
Front Camera - Bottom side view of main board



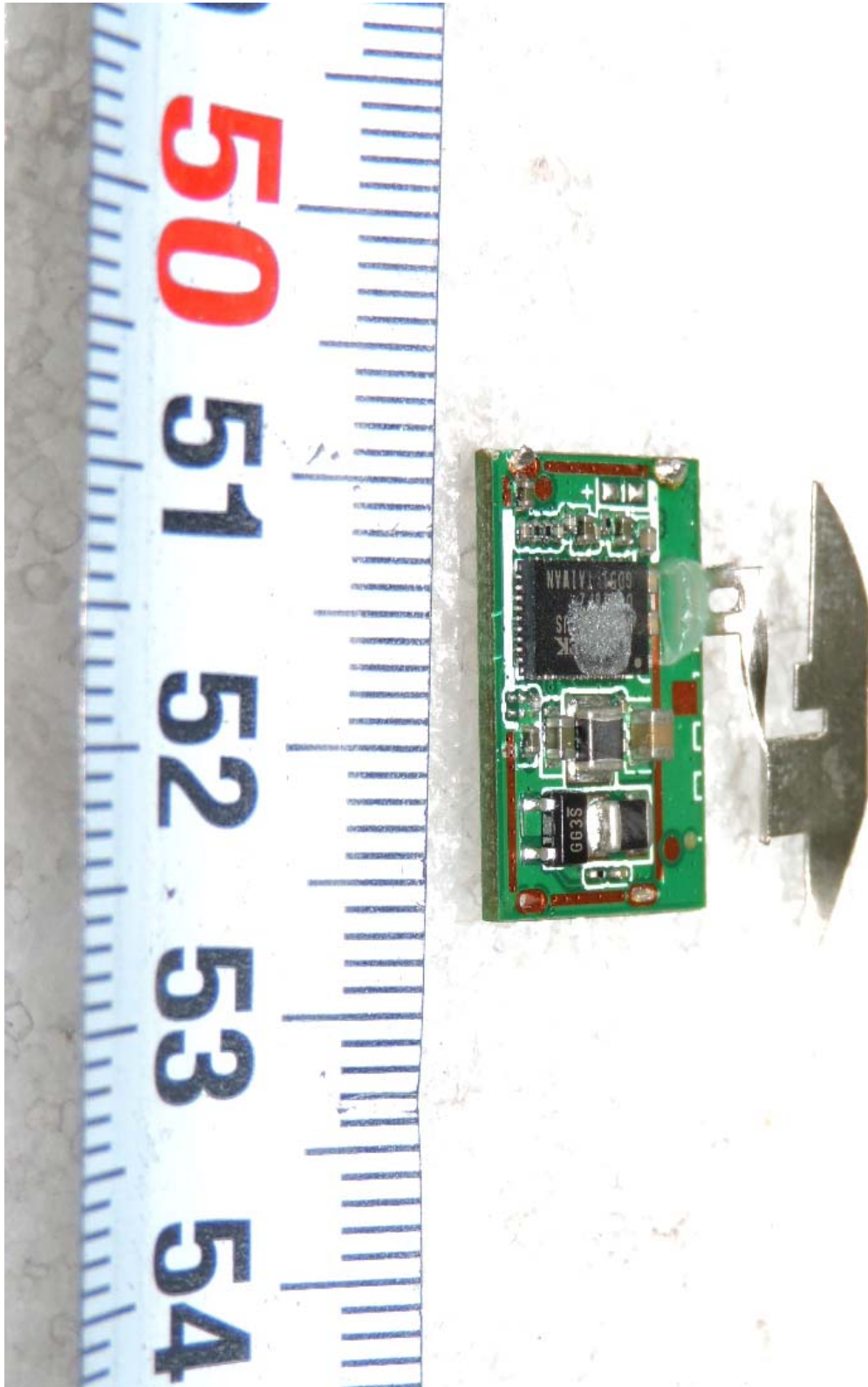
Front Camera - Top side view of power board



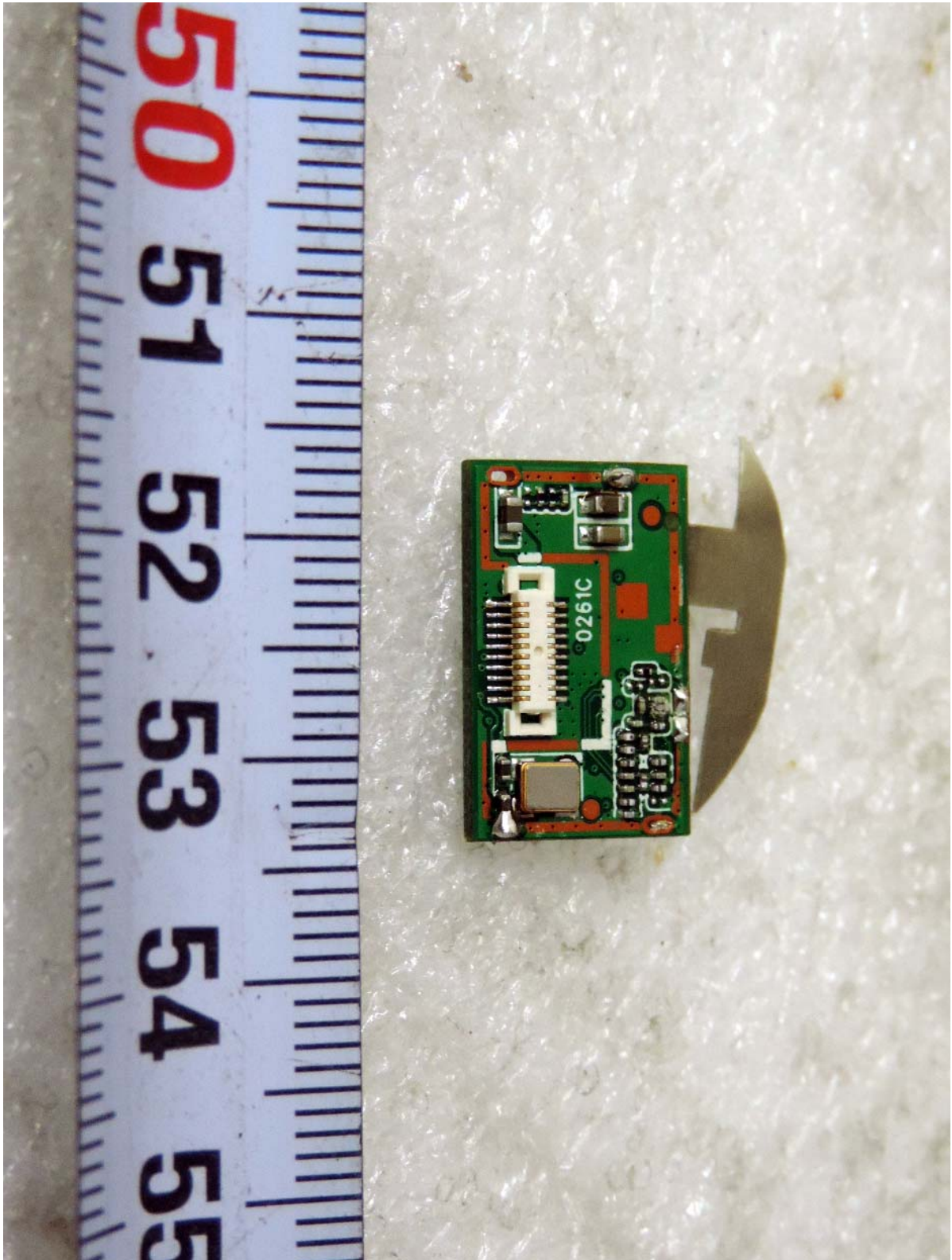
Front Camera - Bottom side view of power board



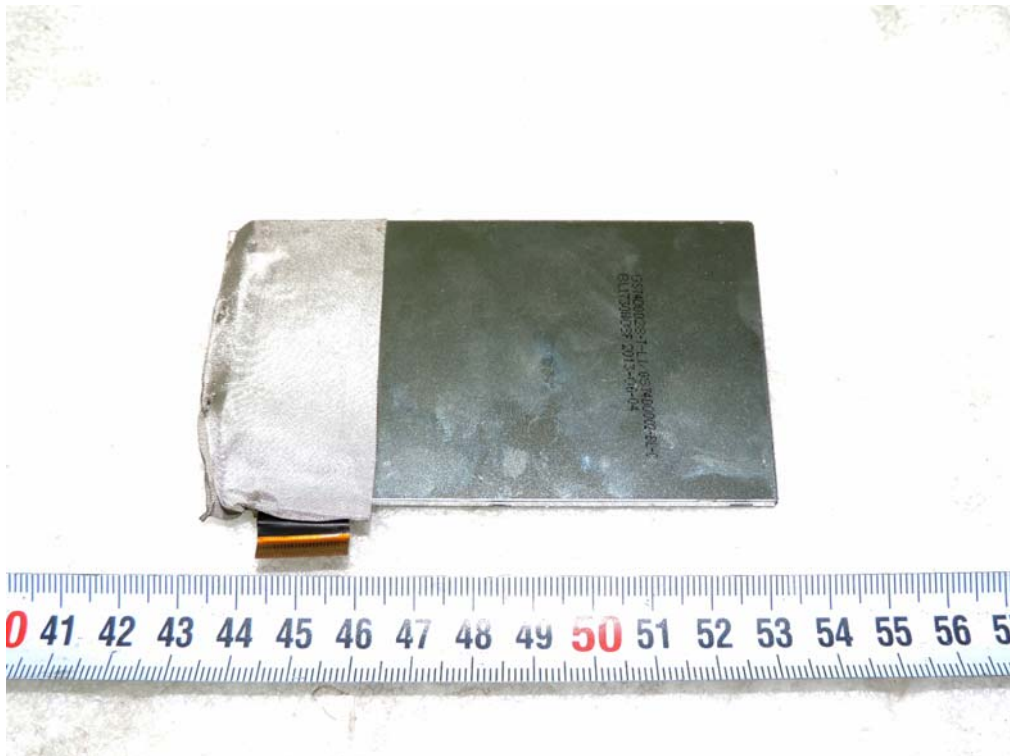
Front Camera - Top side view of RF Module



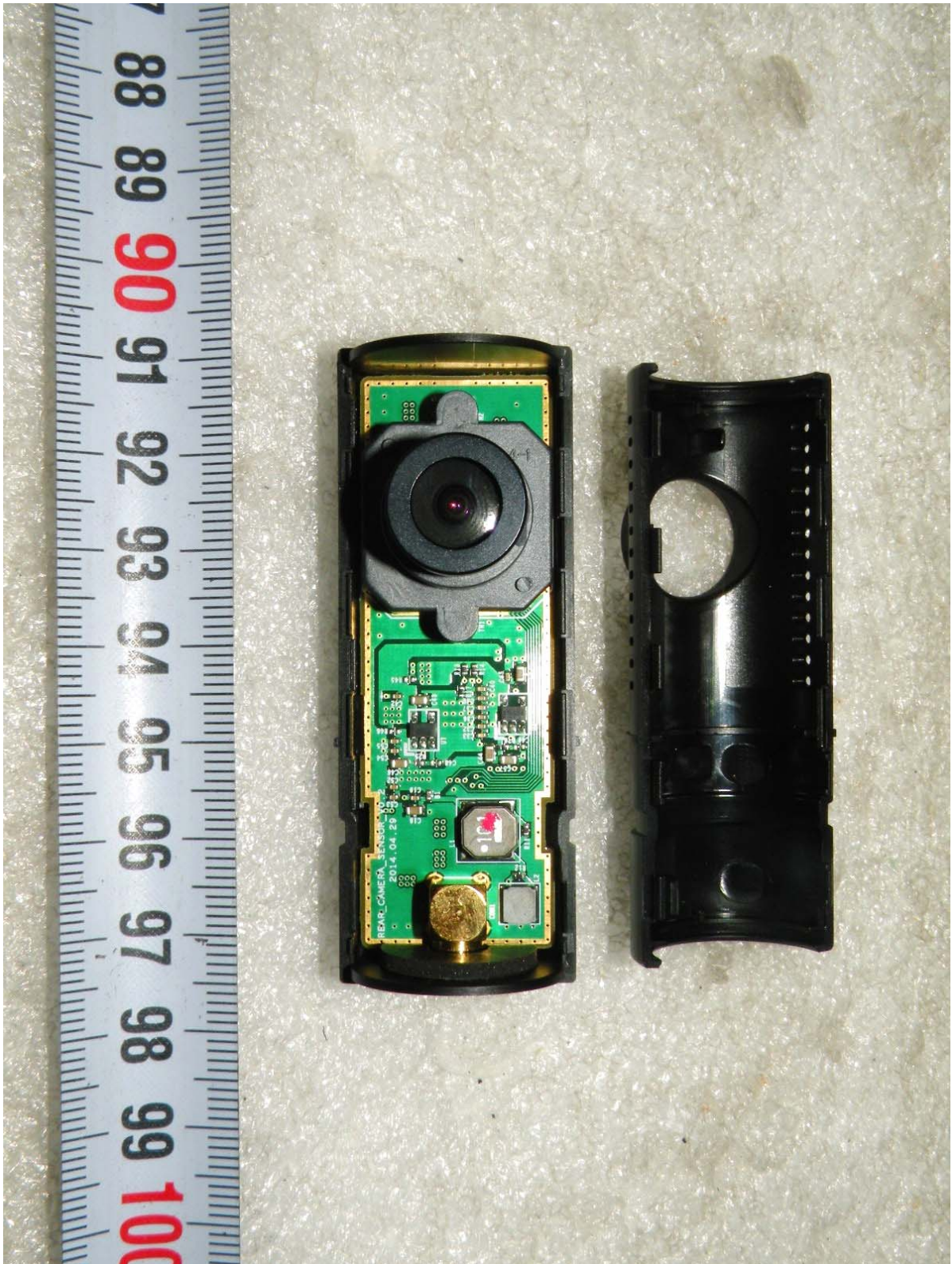
Front Camera - Bottom side view of RF Module



Front Camera - View of display panel



Rear Camera - Inside view of EUT



Rear Camera - Bottom side view of main board

