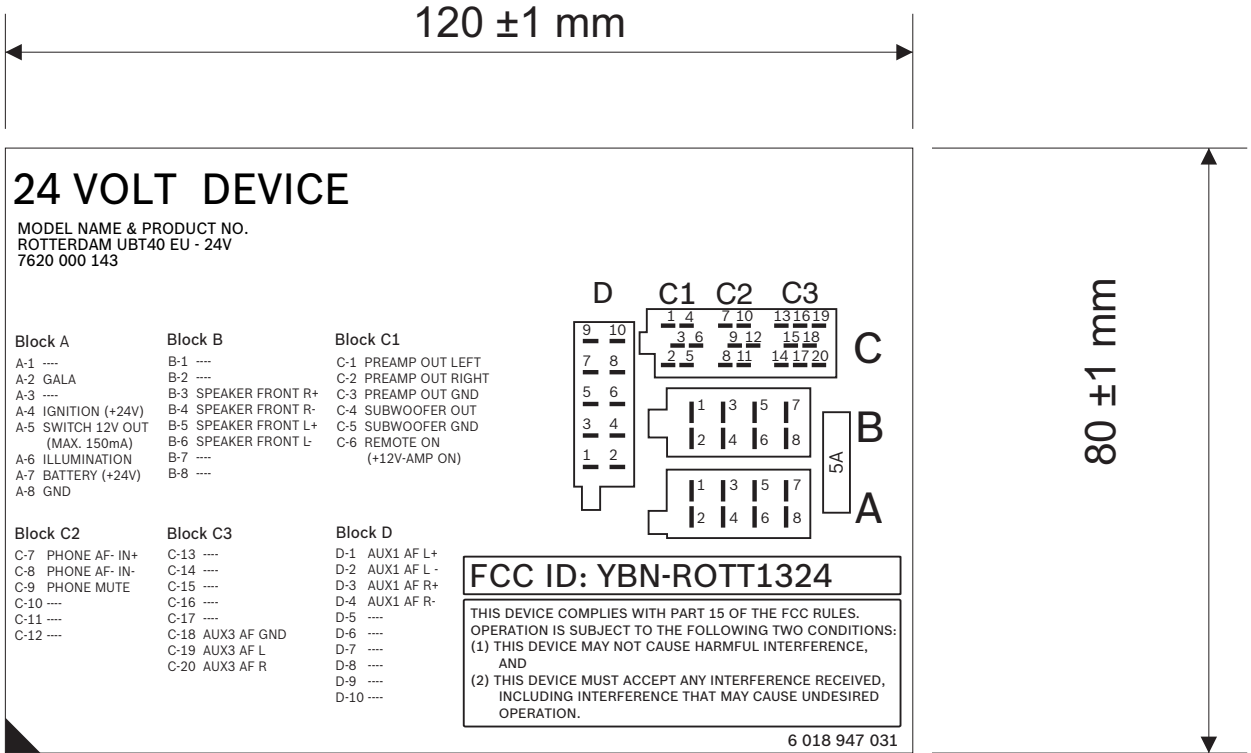


Bearbeitungsort:
 Zweitoriginal in:



Design:

Artwork design as per drawing, do not print reference lines & dimensions

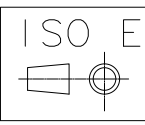
Printing: Black

Front: Shiny

Back: Adhesive

Sticker must not peel off after sticking to the surface for temperature ranging from +85°C to -40°C

Labels to be glued to Silicon paper

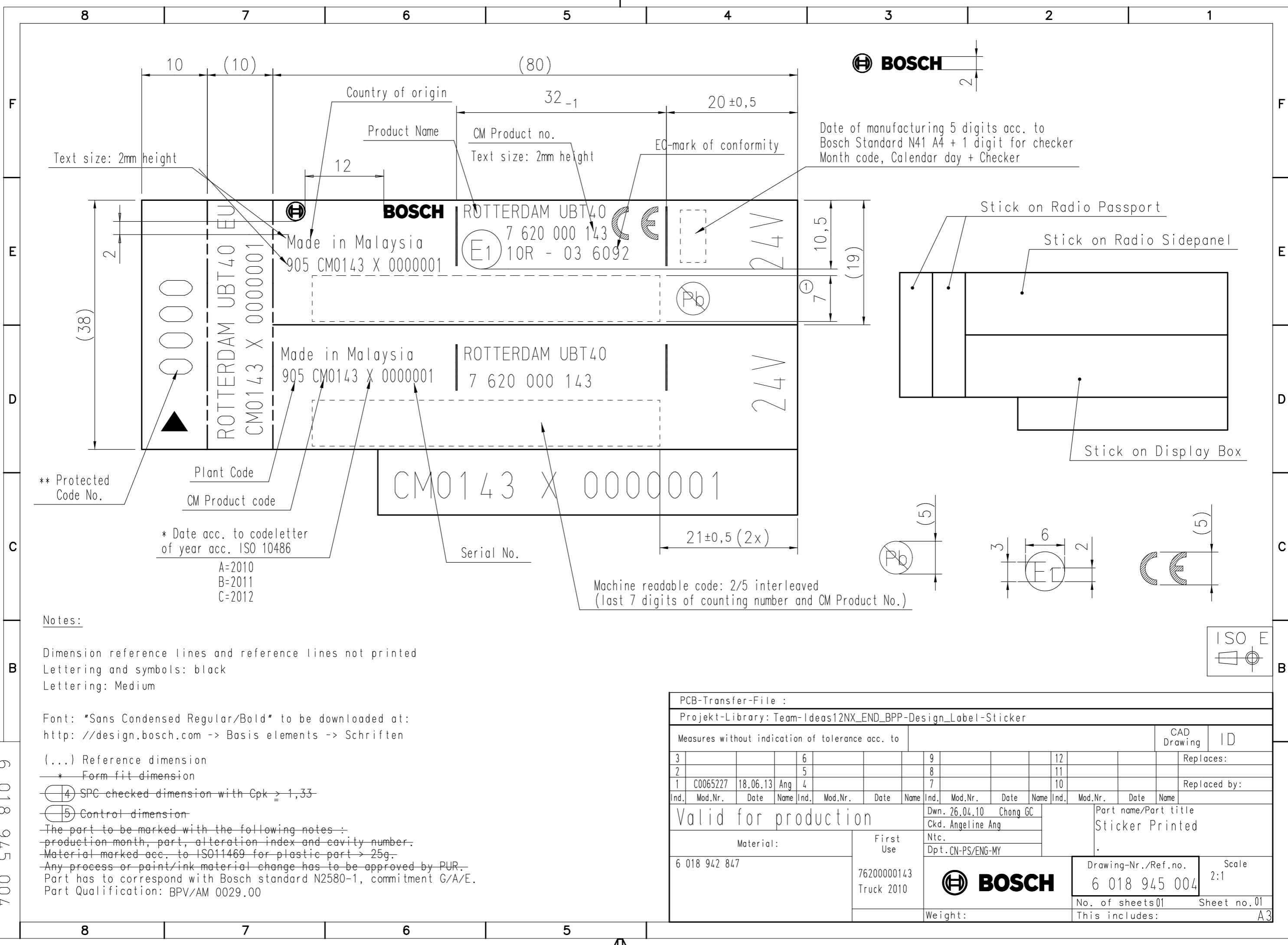


PCB-Transfer-File :														Original CoreIDRAW V13			
Projekt-Library: j:\Section\ERN\ERM53\Artwork_Design\Corefiles\PS_PMA\Truck 2010																	
Measures without indication of tolerance acc. to												CAD Drawing		ID			
3				6				9				12					Replaces:
2	6018945403	08.09.11	cgc	5				8				11					
1	6018945057	25.06.10	cgc	4				7				10					Replaced by:
Ind.	Mod.Nr.	Date	Name	Ind.	Mod.Nr.	Date	Name	Ind.	Mod.Nr.	Date	Name	Ind.	Mod.Nr.	Date	Name		
								Dwn. 16.04.13 cgc				Part name/Part title Connection Sticker					
								Ckd. Angeline Ang									
								Dpt. CM-PS/ENG-MY									
Material:				First Use								Drawing-Nr./Ref.no. 6 018 947 031					
Mirrokote paper 80-100g/m ² (White)				7 200 000 143								Scale 1:1					
												No. of sheets 01 Sheet no. 01					
								Weight:				This includes: A4					

Diese technische Unterlage ist ausschliesslich unser Eigentum. Ohne unsere vorherige Zustimmung darf sie weder vervielfaeltigt noch Dritten zugänglich gemacht werden. Wir behalten uns alle Rechte vor, auch fuer den Fall der Patentierung oder Gebrauchsmustereintragung. -Aenderungen von Massen oder Abweichungen von freigegebenen Mustern nur mit unserer Zustimmung.
 Robert Bosch Malaysia Sdn Bhd

This technical documentation is our exclusive property. Without our express prior consent, it may not be reproduced in any form or made available to third parties. We reserve all rights, including cases of patenting or utility patent registration. Any changes in dimensions or deviations from released samples require our explicit consent.

700 576 810 9
 Robert Bosch Malaysia Sdn Bhd



** Protected Code No.

Plant Code
CM Product code

* Date acc. to codeletter of year acc. ISO 10486
 A=2010
 B=2011
 C=2012

CM0143 X 00000001

Serial No.

Machine readable code: 2/5 interleaved (last 7 digits of counting number and CM Product No.)

Notes:

Dimension reference lines and reference lines not printed
 Lettering and symbols: black
 Lettering: Medium

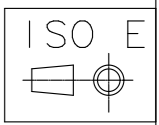
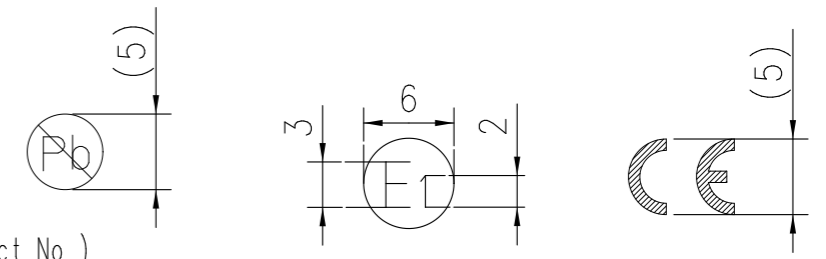
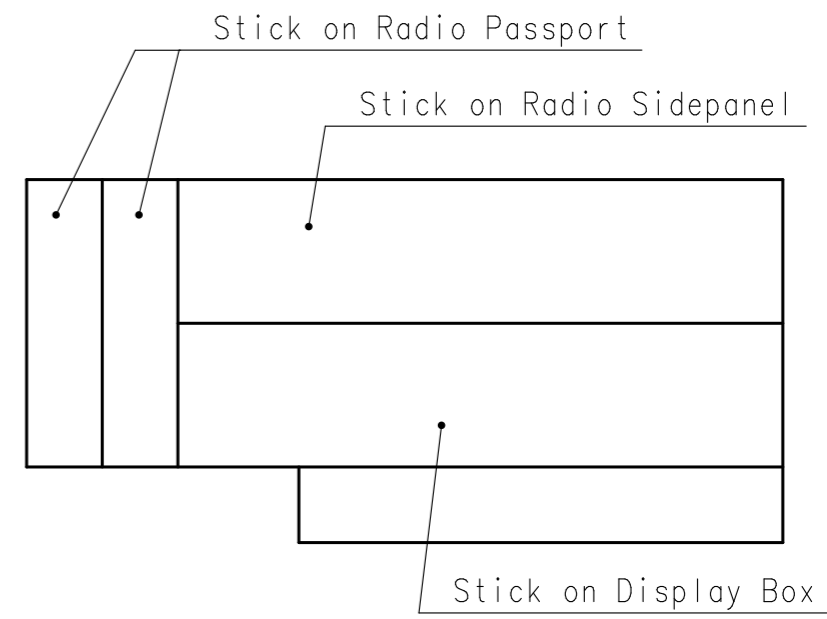
Font: "Sans Condensed Regular/Bold" to be downloaded at:
<http://design.bosch.com> -> Basis elements -> Schriften

(...) Reference dimension
 * Form fit dimension

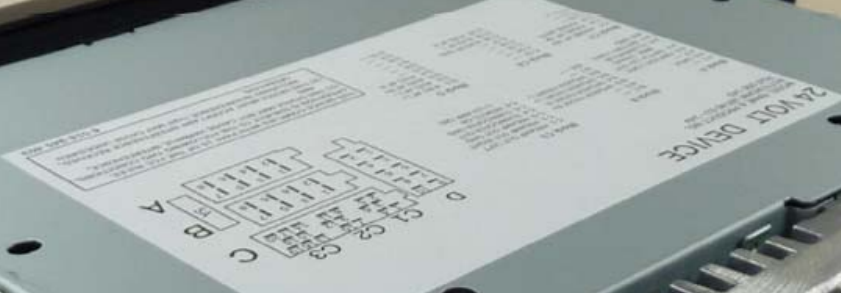
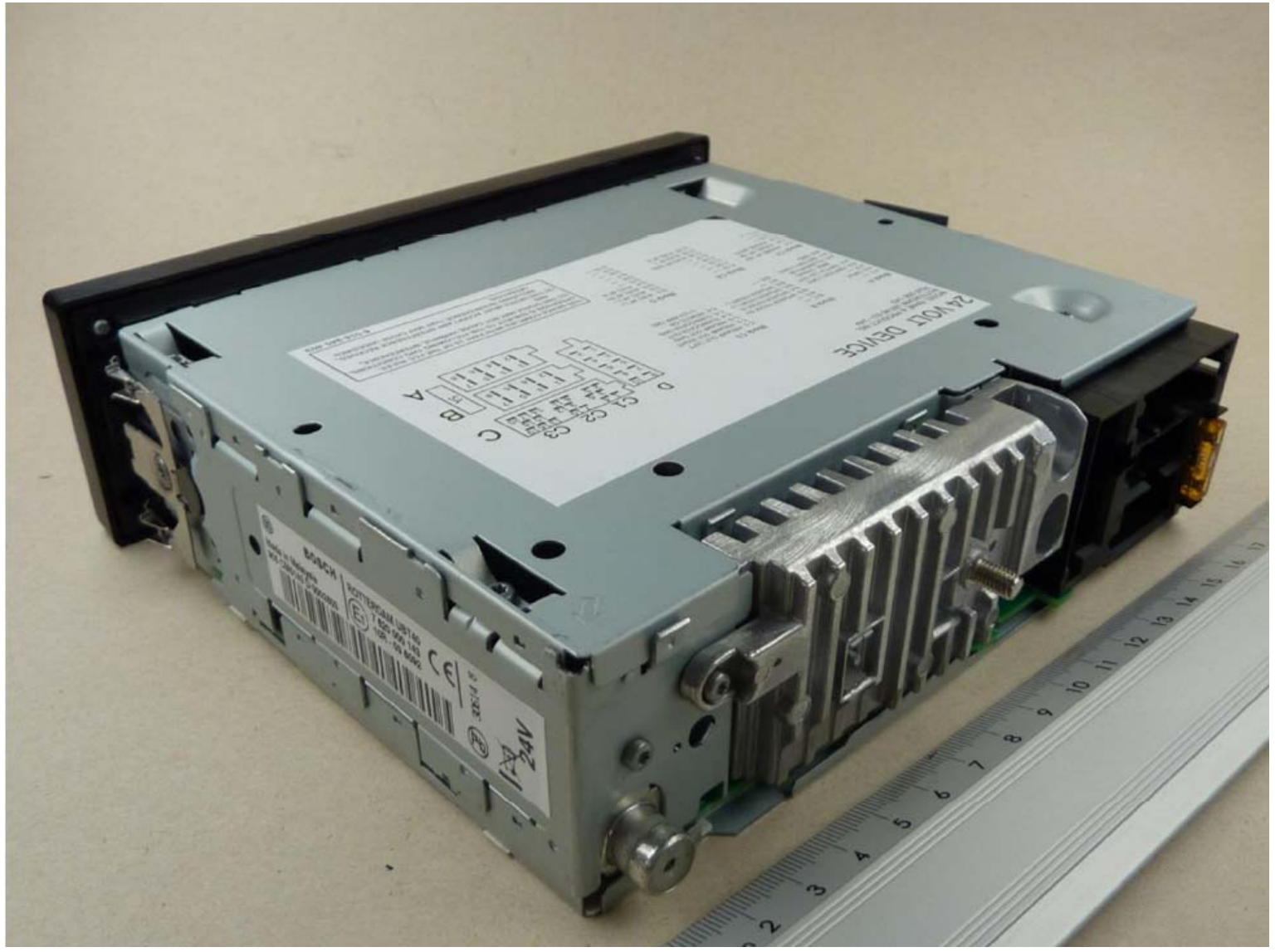
④ SPC checked dimension with Cpk ≥ 1,33

⑤ Control dimension

The part to be marked with the following notes :-
 production month, part, alteration index and cavity number.
 Material marked acc. to ISO11469 for plastic part > 25g.
 Any process or paint/ink material change has to be approved by PUR.
 Part has to correspond with Bosch standard N2580-1, commitment G/A/E.
 Part Qualification: BPV/AM 0029.00



PCB-Transfer-File :															
Projekt-Library: Team-Ideas12NX_END_BPP-Design_Label-Sticker															
Measures without indication of tolerance acc. to														CAD Drawing	ID
3				6				9				12			Replaces:
2				5				8				11			
1	C0065227	18.06.13	Ang	4				7				10			Replaced by:
Ind.	Mod.Nr.	Date	Name	Ind.	Mod.Nr.	Date	Name	Ind.	Mod.Nr.	Date	Name	Ind.	Mod.Nr.	Date	Name
Valid for production								Dwn. 26.04.10		Chong GC		Part name/Part title			
Material: 6 018 942 847								First Use: 76200000143 Truck 2010		Ntc. Ckd. Angeline Ang		Sticker Printed			
										Dpt. CN-PS/ENG-MY					
Weight:								BOSCH		Drawing-Nr./Ref.no. 6 018 945 004		Scale 2:1			
										No. of sheets 01		Sheet no. 01			
										This includes:		A3			



BOSCH
Made in Germany
NOT FOR SALE IN THE
UNITED STATES OF AMERICA
24VOLT DEVICE
100% NiMH
100% NiMH
100% NiMH

24VOLT DEVICE

24V