

Text for illustration only, see data sheet

Version acc. to CM Development Guideline-Mechanics 1.4.5 Type labels for CM-Product

Lettering DIN 1451

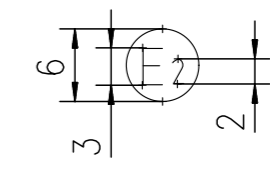
Version:

Background: White
 Reverse: Permanently Glue
 Material: * matt cover *
 The sticker shall not peel off from the surface (galvanized metal) +85°C to +40°C

Silicone paper roll of 1000 stickers each

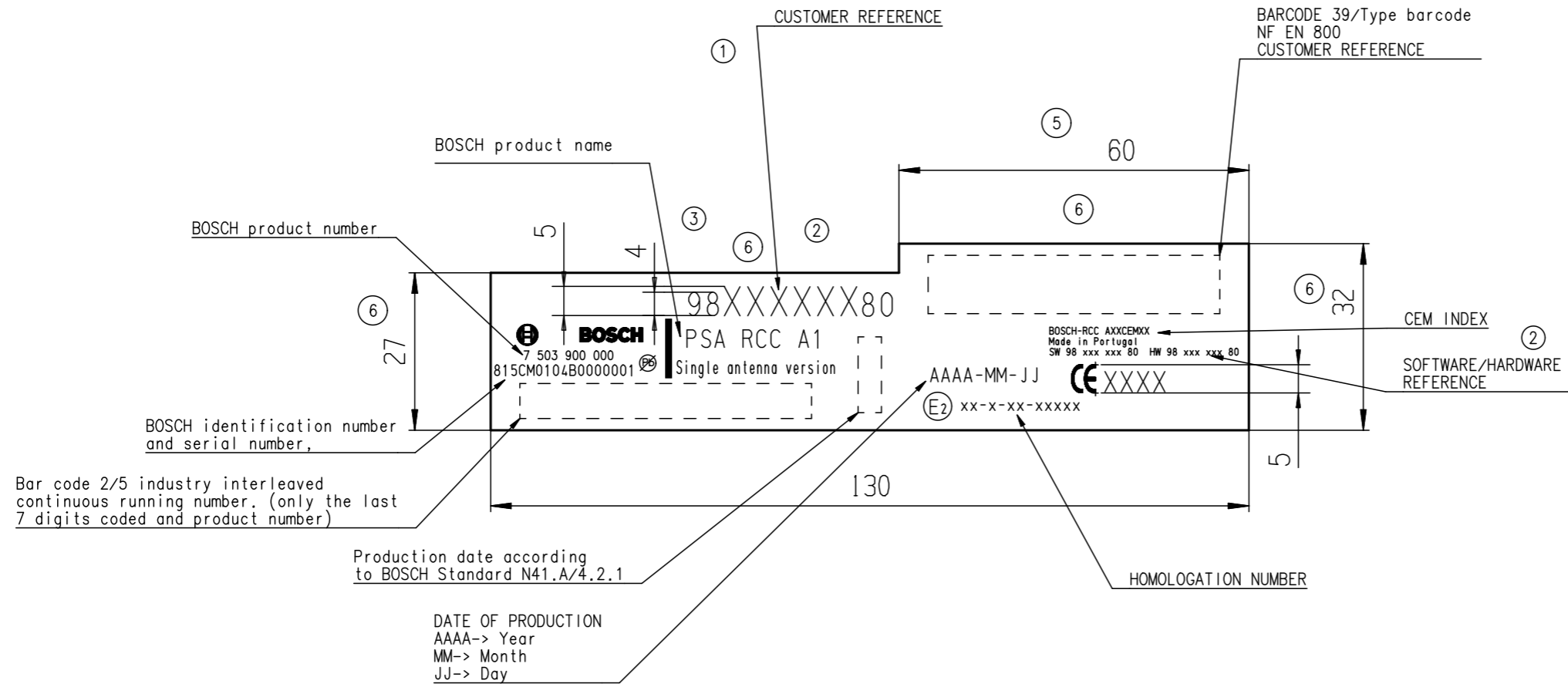
Stickers on rolls (inner ø76 mm outer ø203 mm)
 Construction lines not printed.

Print acc. to film EAK 2450



10 R-03 XXXX

Technical spec. 8 600 HMO 029



DATE OF PRODUCTION
 AAAA-> Year
 MM-> Month
 JJ-> Day

Production date according to BOSCH Standard N41.A/4.2.1

Bar code 2/5 industry interleaved continuous running number. (only the last 7 digits coded and product number)

BOSCH identification number and serial number,

BOSCH product number

BOSCH product name

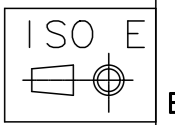
CUSTOMER REFERENCE

BARCODE 39/Type barcode NF EN 800 CUSTOMER REFERENCE

CEM INDEX

SOFTWARE/HARDWARE REFERENCE

HOMOLOGATION NUMBER



PCB-Transfer-File :															
Projekt-Library: PSA RCC															
Measures without indication of tolerance acc. to												CAD Drawing	ID		
3	----	26.11.14	Rs	6	A2296101	13.01.16	Be	9				12		Replaces:	
2	----	17.09.14	Rs	5	A2290201	10.12.15	Be	8				11			
1	----	12.09.14	Rs	4	-----	12.01.15	Rs	7				10		Replaced by:	
Ind.	Mod.Nr.	Date	Name	Ind.	Mod.Nr.	Date	Name	Ind.	Mod.Nr.	Date	Name	Ind.	Mod.Nr.	Date	Name
Valid for information								Dwn. 11.03.14 SC Lee		Part name/Part title					
Material:								First Use		Sticker Printed					
								see table		Sticker Printed					
Weight:								Ntc.		Drawing-Nr./Ref.no.					
								Dpt. CM-AI/ECC1		8 631 602 027					
								BOSCH		Scale 1:1					
										No. of sheets 01 Sheet no. 01					
										This includes:					
										A3					

Teil muss der Bosch-Norm N 2580-1 entsprechen.
 Part has to correspond with the Bosch standard N 2580-1.

Diese technische Unterlage ist ausschliesslich unser Eigentum. Ohne unsere vorherige Zustimmung darf sie weder vervielfaeltigt noch Dritten zugänglich gemacht werden. Wir behalten uns alle Rechte vor, auch fuer den Fall der Patentierung oder Gebrauchsmustereintragung. -Aenderungen von Massen oder Abweichungen von freigegebenen Mustern nur mit unserer Zustimmung.
 Robert Bosch Car Multimedia GmbH

8 631 602 027