

Annex 4: Internal EUT photographs to
PARTIAL TEST REPORT
 No.: 6-0461-14-3-1a/b/c/d

for
 Robert Bosch Car Multimedia GmbH

LCN2K70A10
Radio Navigation System
 (Bluetooth 2.4GHz)

FCC ID: YBN-LCN2K70A10
IC: 9595A-LCN2K70A10
 PMN: Nissan LCN2Kai
 HVIN: LCN2K70A10







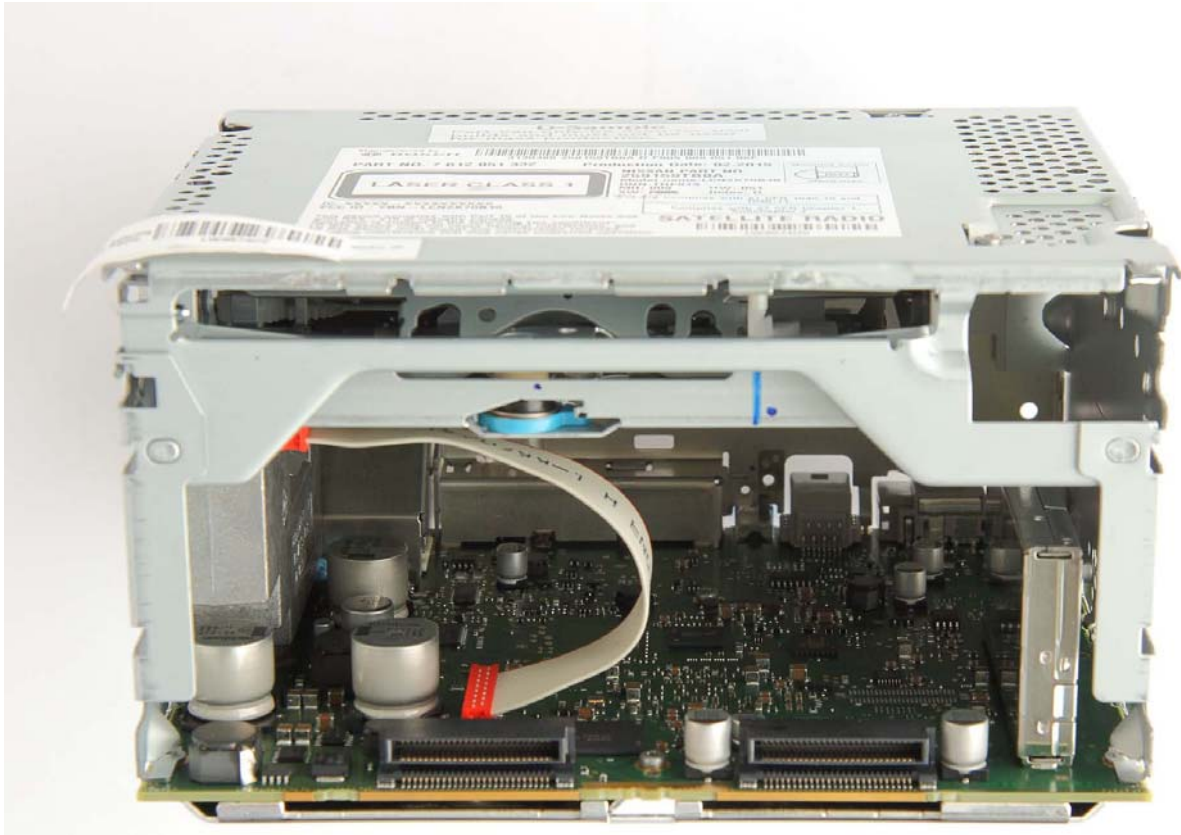
Laboratory Accreditation and Listings			
 DAkkS Deutsche Akkreditierungsstelle D-PL-12047-01-01	 FEDERAL COMMUNICATIONS COMMISSION FCC USA MRA US-EU 0003	 Industry Canada Reg. No.: 3462D-1 Reg. No.: 3462D-2 Reg. No.: 3462D-3	 Voluntary Controls for Electromagnetic Emissions Reg. No.: R-2666 C-2914, T-1967, G-301
 WiFi ALLIANCE AUTHORIZED RF LABORATORY	 CTIA Authorized Test Lab LAB CODE 20011130-00		
accredited according to DIN EN ISO/IEC 17025			
<p align="center"> CETECOM GmbH Laboratory Radio Communications & Electromagnetic Compatibility Im Teelbruch 116 • 45219 Essen • Germany Registered in Essen, Germany, Reg. No.: HRB Essen 8984 Tel.: + 49 (0) 20 54 / 95 19-954 • Fax: + 49 (0) 20 54 / 95 19-964 E-mail: info@cetecom.com • Internet: www.cetecom.com </p>			

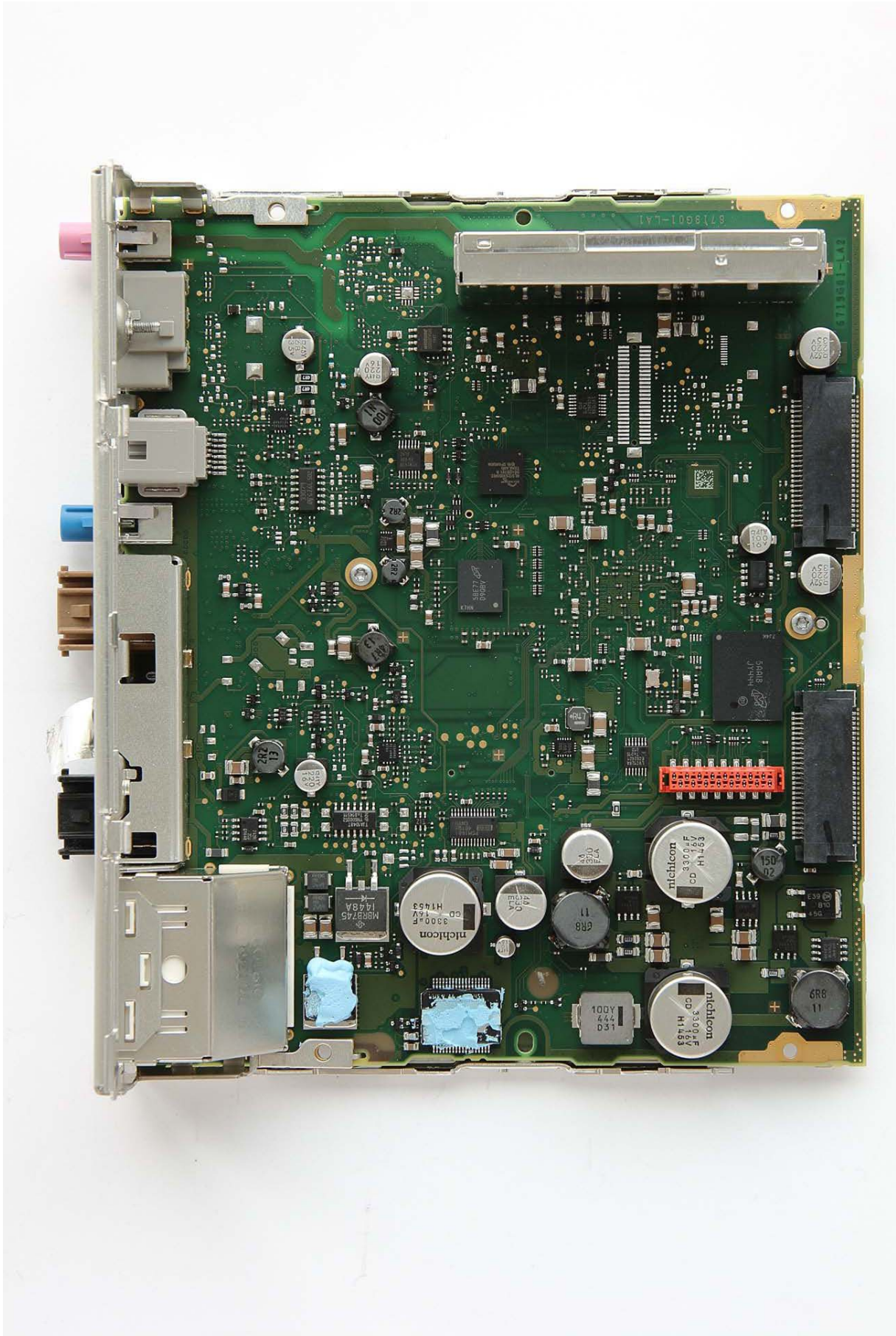
Table of contents

1. EUT INTERNAL PHOTOGRAPHS	3
-----------------------------------	---

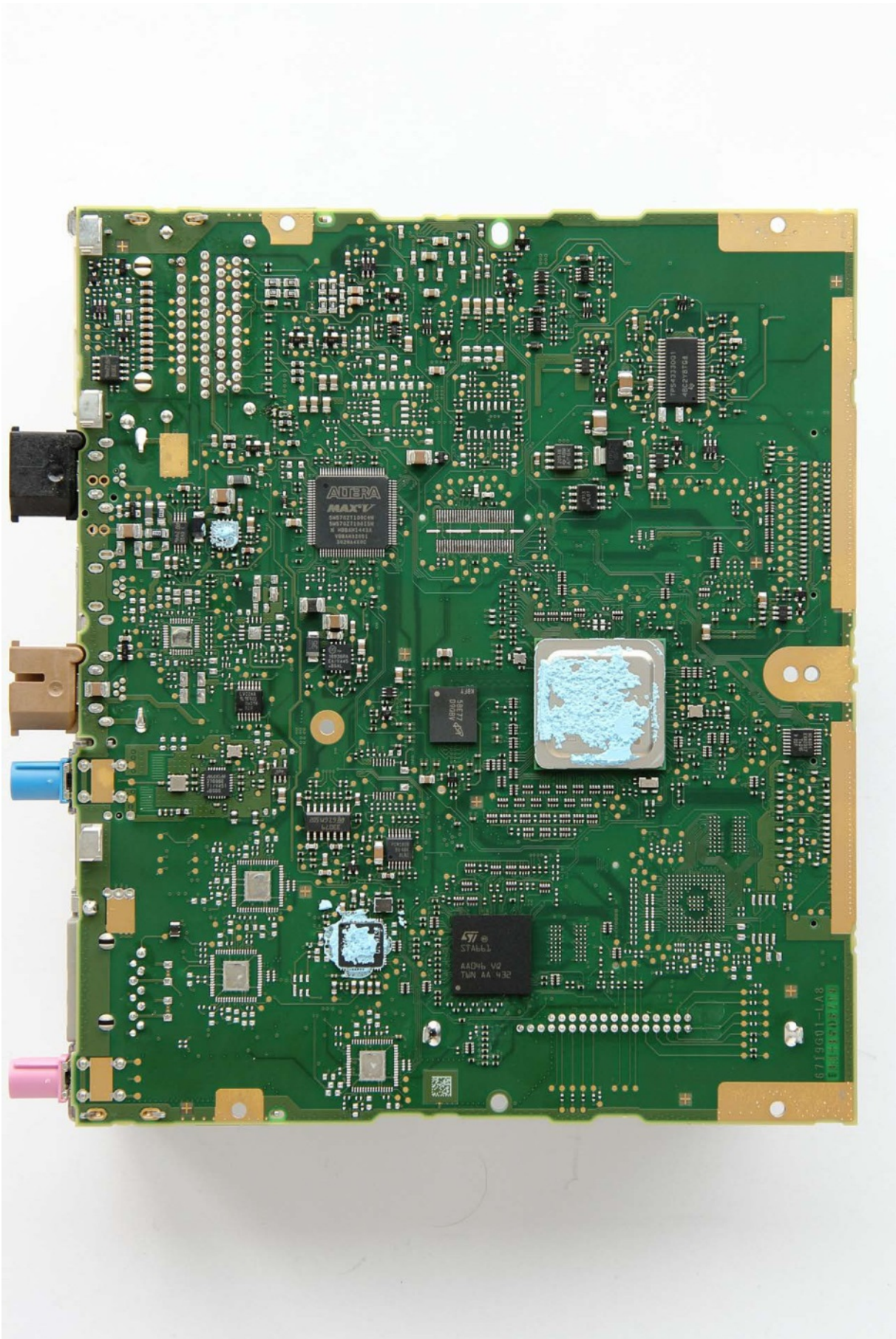
1. EUT Internal photographs



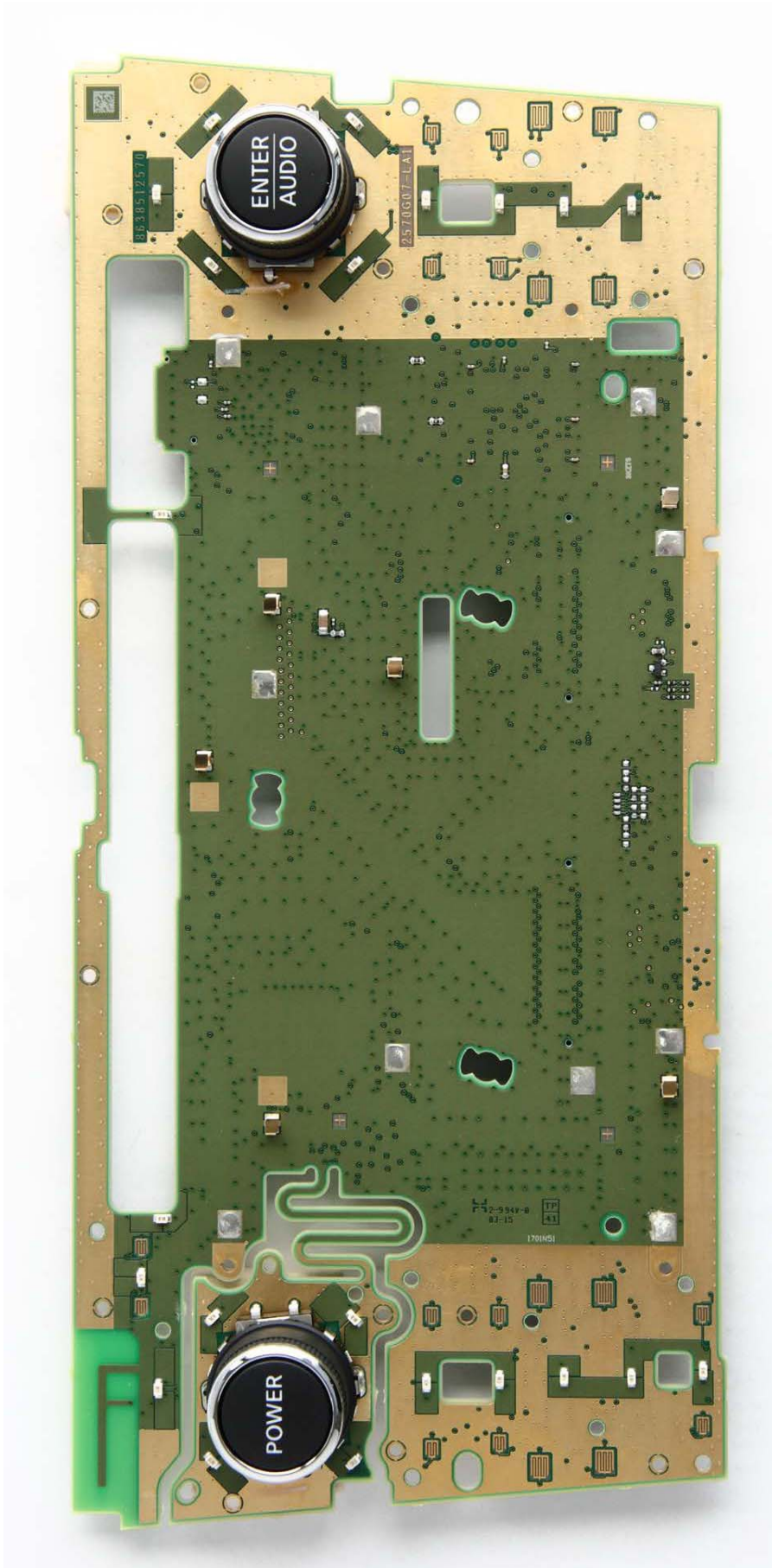
1.1. Photographs: Front view, Cover removed



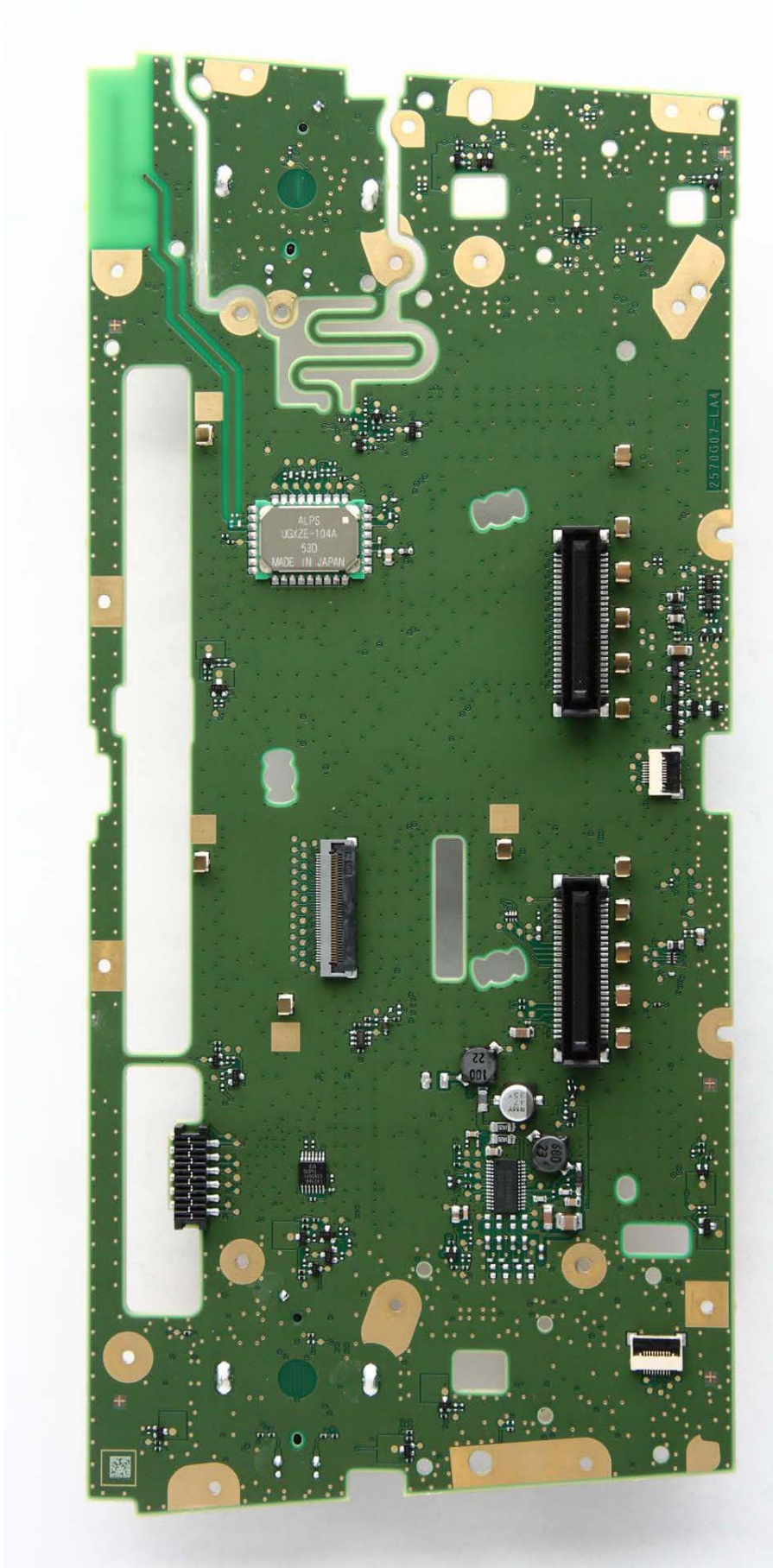
1.2. Photographs: Mainboard, top side



1.3. Photographs: Mainboard bottom side



1.4. Photographs: Switch board - top side



1.5. Photographs: Switch boards - bottom side



1.6. Photographs: BT Module on switch board with removed top shielding