

ANNEX 4

“INTERNAL EUT PHOTOGRAPHS“

TO







TEST REPORT
No.: 6-0111-11-1-3A

for

ROBERT BOSCH CAR MULTIMEDIA GMBH

BLUETOOTH RADIO NAVIGATION NISSAN LCN2 (7 612 051 140)

FCC-ID: YBN-LCN20
IC: 9595A-LCN20

Laboratory Accreditation and Listings			
 Deutsche Akkreditierungsstelle D-PL-12047-01-01	 FEDERAL COMMUNICATIONS COMMISSION USA Reg. No.: 736496 MRA US-EU 0003	 Industry Canada Reg. No.: 3462D-1 Reg. No.: 3462D-2 Reg. No.: 3462D-3	 Voluntary Controls for Electromagnetic Emissions Reg. No.: R-2665, R-2666 C-2914, T-1967, G-301
 AUTHORIZED RF LABORATORY	 LAB CODE 20011130-00		
accredited according to DIN EN ISO/IEC 17025			
<p align="center"> CETECOM GmbH Laboratory Radio Communications & Electromagnetic Compatibility Im Teelbruch 116 • 45219 Essen • Germany Registered in Essen, Germany, Reg. No.: HRB Essen 8984 Tel.: + 49 (0) 20 54 / 95 19-954 • Fax: + 49 (0) 20 54 / 95 19-964 E-mail: info@cetecom.com • Internet: www.cetecom.com </p>			

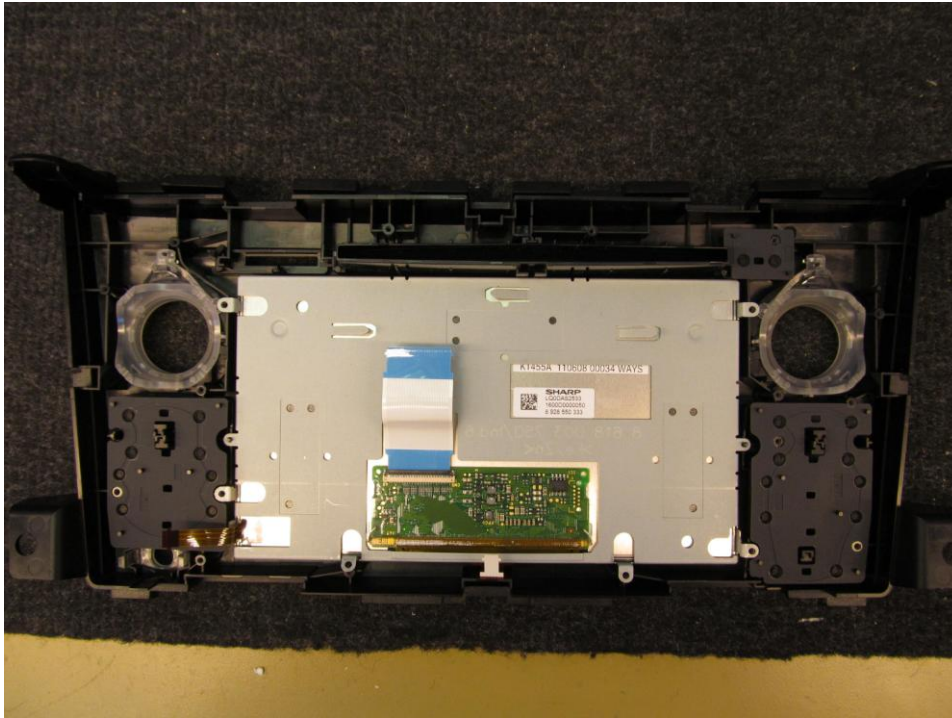
Version of template:

11.08

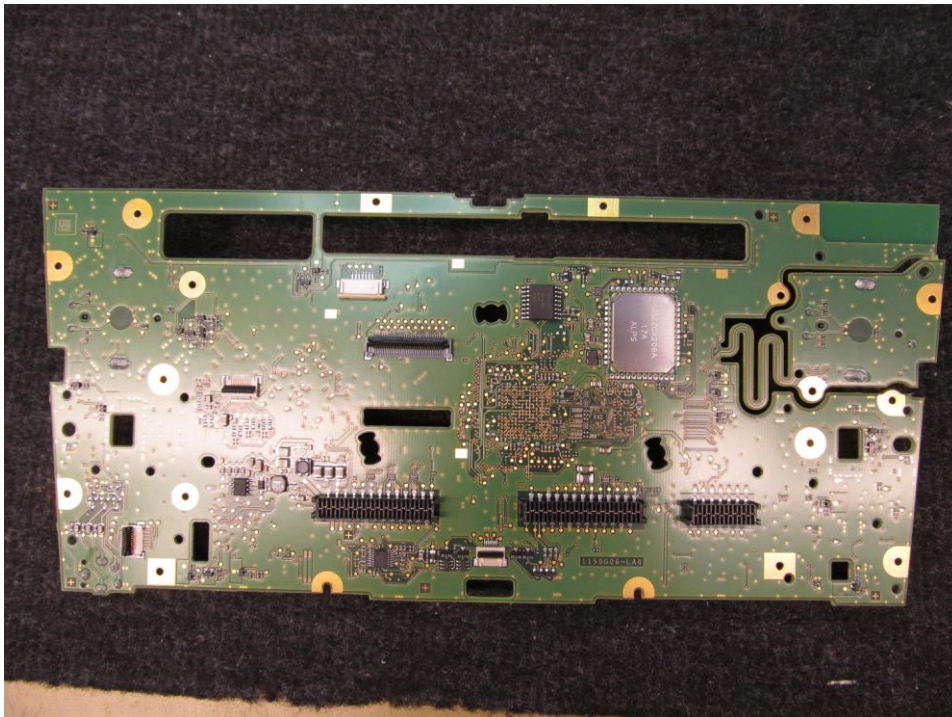
1. PHOTOGRAPHS – INTERNAL PHOTOS

3

1. Photographs – Internal Photos



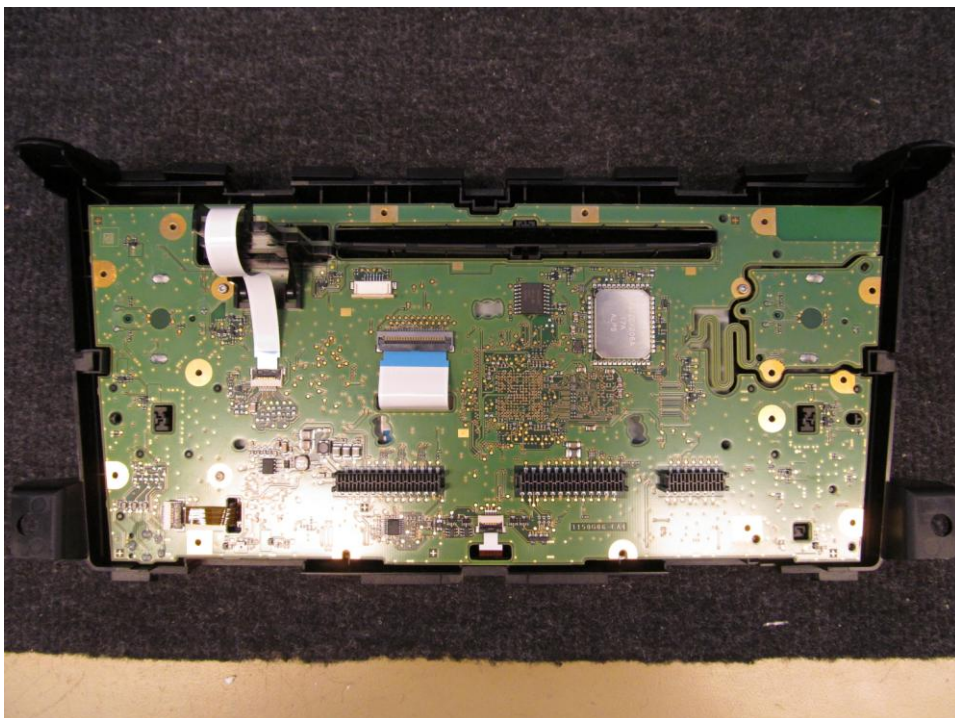
Photograph 1: Front Cover - back view



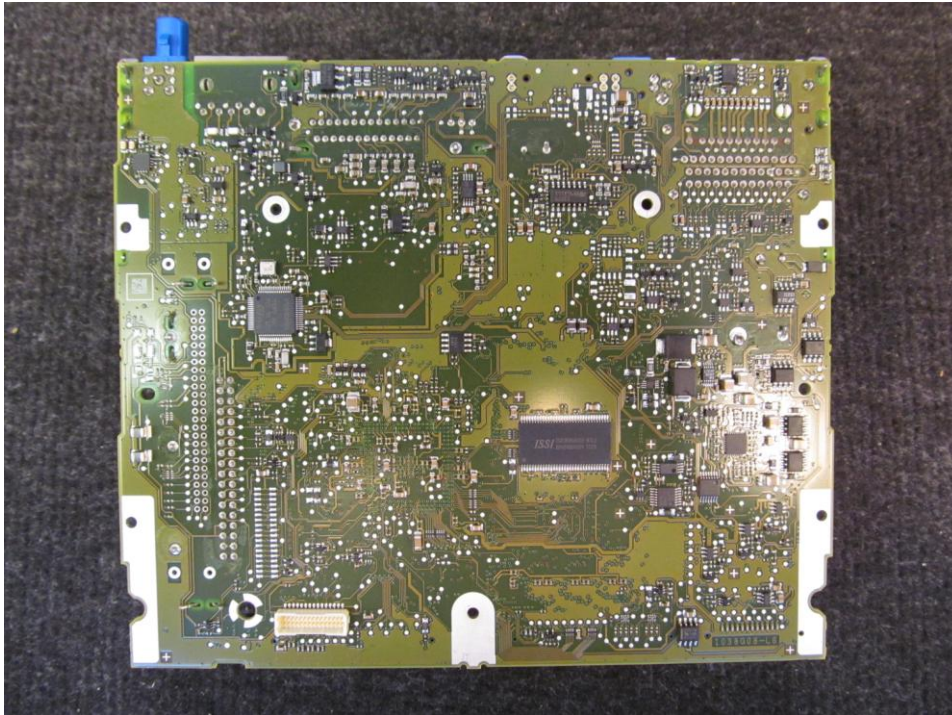
Photograph 2: Internal PCB



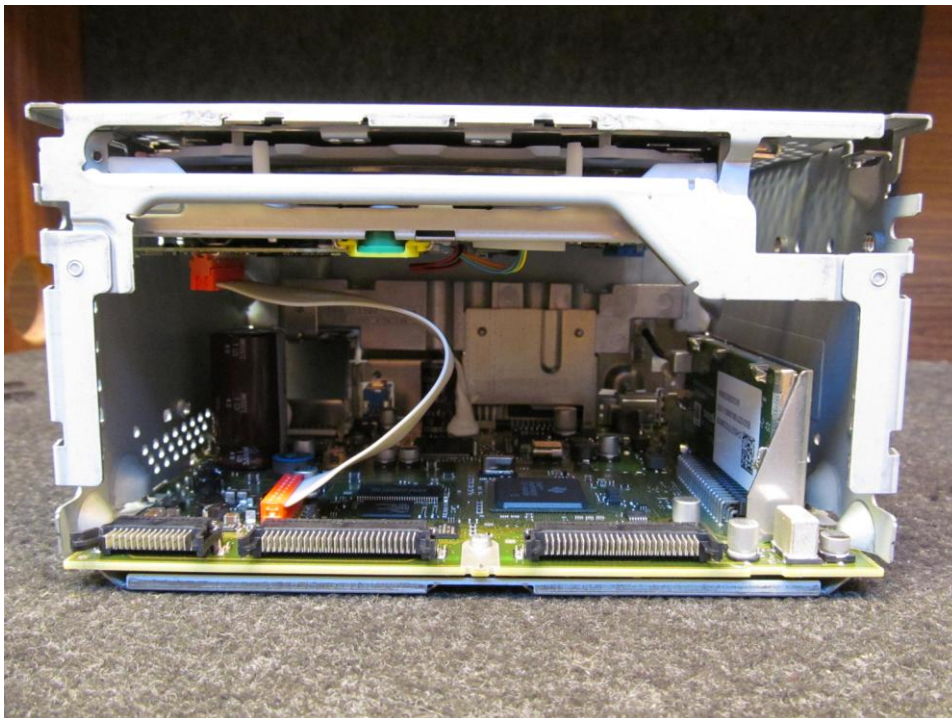
Photograph 3: Internal Main PCB



Photograph 4: PCB



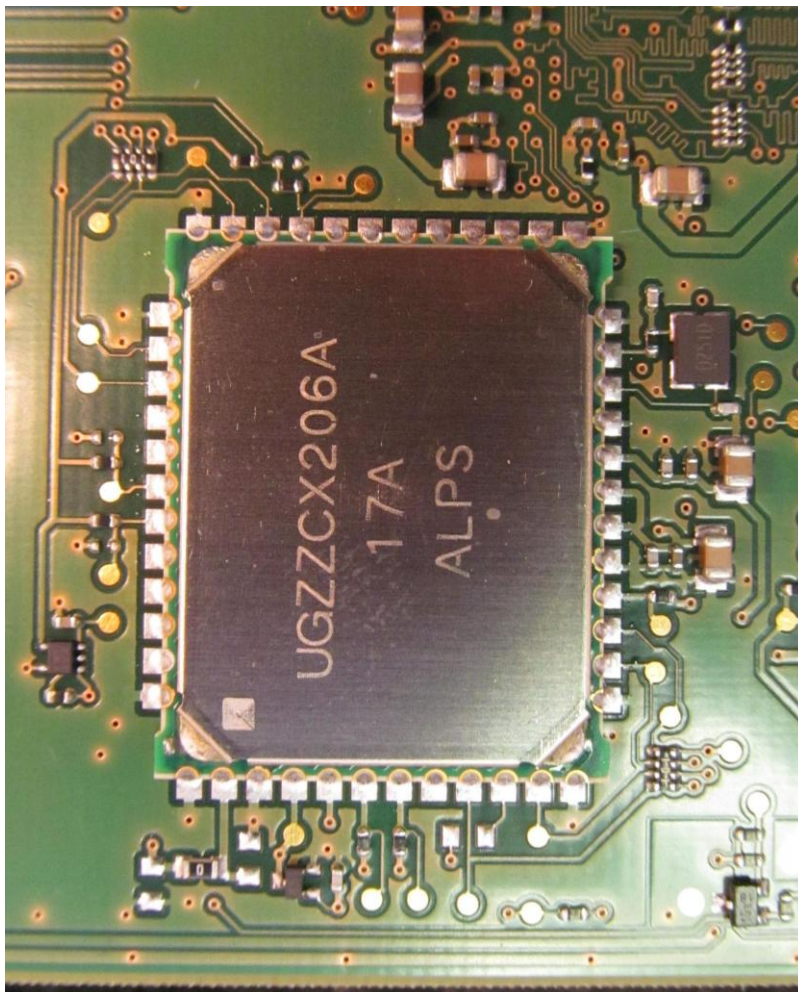
Photograph 5: Rear view PCB



Photograph 6: Inside overall view



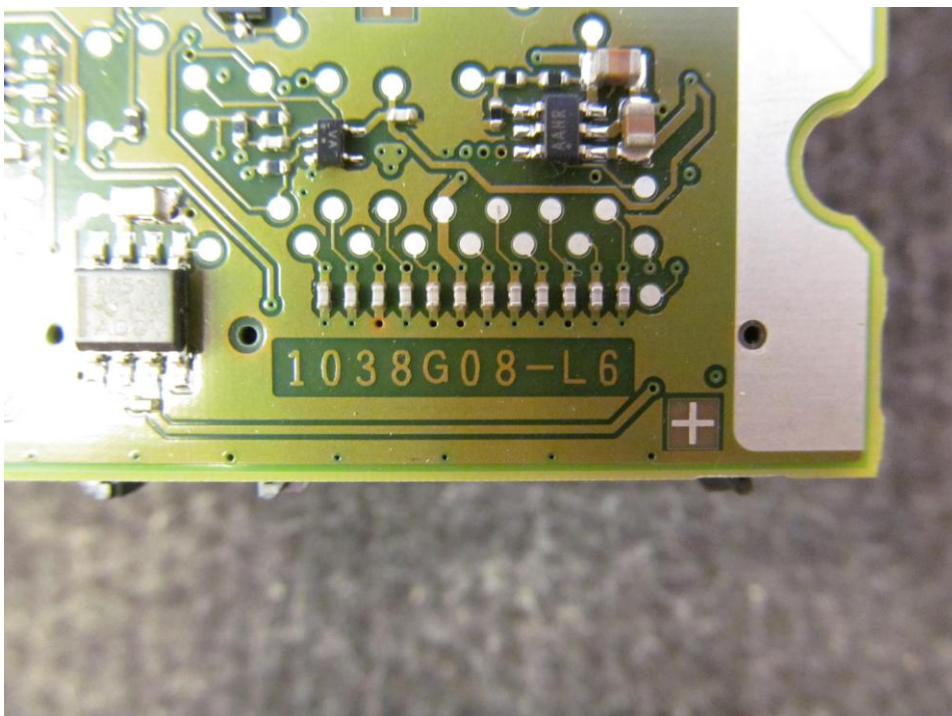
Photograph 7: PCB



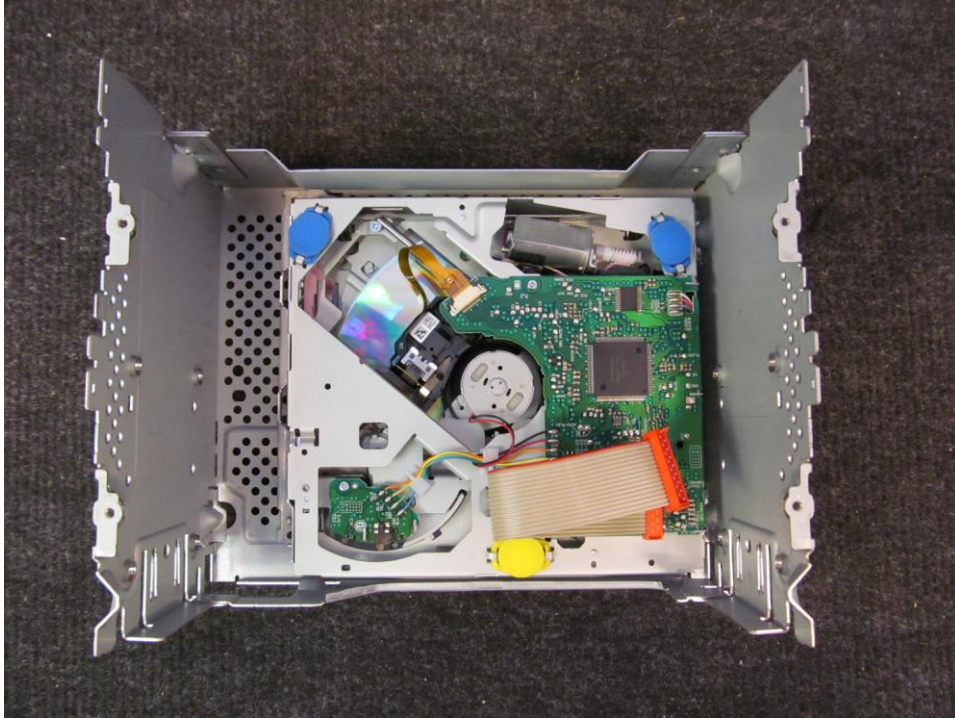
Photograph 8: Chipset



Photograph 9: Chipset



Photograph 10: Trace view



Photograph 11: CD tray unit