



Hildesheim
12 May 2017

From
CM-C11/EHP3

Our Reference
Jürgen Boes

Tel
+49(5121)49-3139

Report

Issue **Confidential**
Topic **A-IVI Scope 2 Internal Pictures**
Description Pictures of PCBs used in A-IVI Scope 2 units

Product Type: Radio-Navigation-System

Model Names: AIVIP32R0
 AIVIL42P0
 AIVIP42M0
 AIVIL42N0
 AIVIH60A0
 AIVIH61L0
 AIVICMFB0
 AIVIL12F0
 AIVIB12P0

Brand: Robert Bosch Car Multimedia GmbH

Bosch Confidential



Hildesheim
12 May 2017

From
CM-CI1/EHP3

Our Reference
Jürgen Boes

Tel
+49(5121)49-3139

Report

Issue Confidential

Topic A-IVI Scope 2 Internal Pictures

Contend

- 1 Common PCBs for all Systems 3**
- 2 Main PCBs..... 3**
- 2.1 Main PCB “B” 3**
 - 2.1.1 Main PCB “B” Top side 3
 - 2.1.2 Main PCB “B” Bottom side 4
- 3 XM Module (all US / CAN variants) 5**
- 4 Switch PCBs 6**
- 4.1 Switch PCB “P32R” 6**
 - 4.1.1 Switch PCB “P32R” Top side..... 6
 - 4.1.2 Switch PCB “P32R” Bottom side..... 7
- 5 Bluetooth/Wi-Fi Module (all variants) 8**
- 5.1 Bluetooth/Wi-Fi Module without Shielding (all variants)..... 8**

Bosch Confidential

Hildesheim
12 May 2017From
CM-C11/EHP3Our Reference
Jürgen BoesTel
+49(5121)49-3139

Report

Issue Confidential

Topic A-IVI Scope 2 Internal Pictures

1 Common PCBs for all Systems

The information which PCB is used in which system is defined in the Model specific documentation.

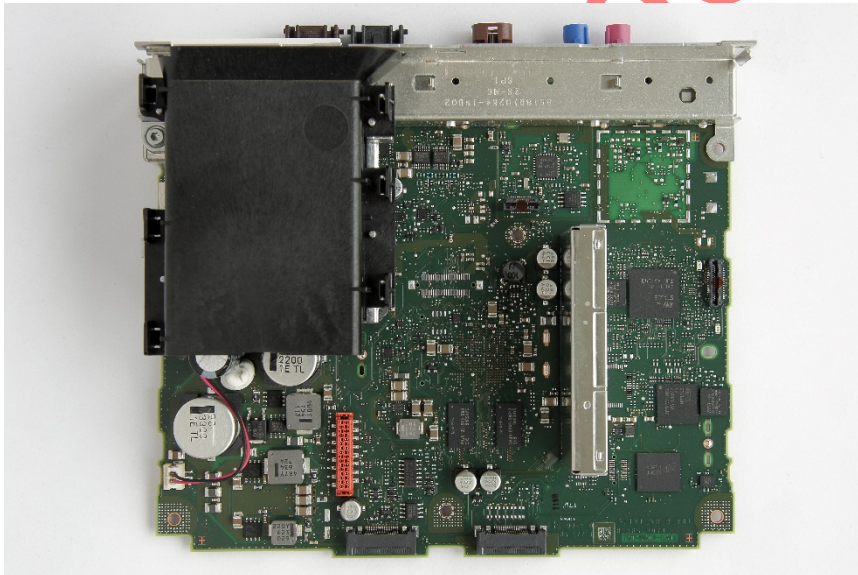
2 Main PCBs

2.1 Main PCB "B"

Circuit and layout name / version: A-IVI_MB_B_V01

Mainboard used for all units with fascia and GT13 antenna connector

2.1.1 Main PCB "B" Top side



Hildesheim
12 May 2017

From
CM-C11/EHP3

Our Reference
Jürgen Boes

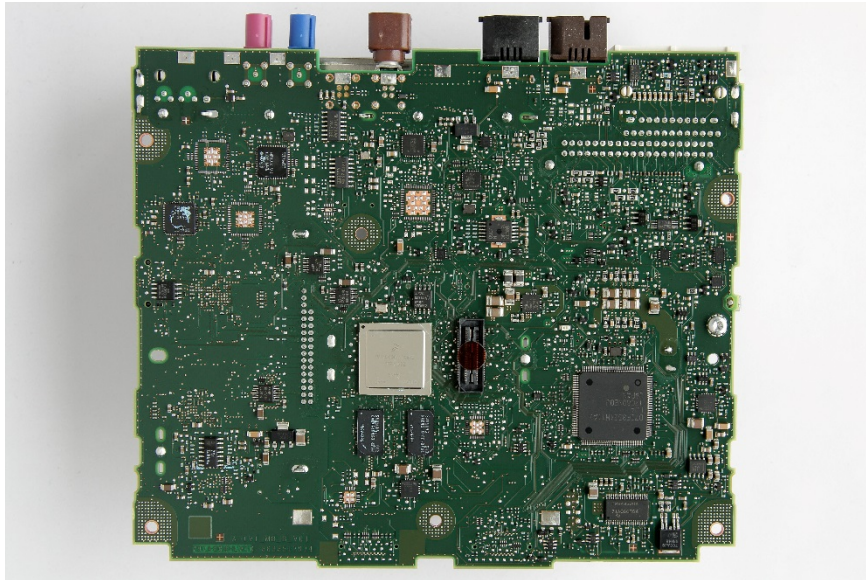
Tel
+49(5121)49-3139

Report

Issue Confidential

Topic A-IVI Scope 2 Internal Pictures

2.1.2 Main PCB “B” Bottom side



Bosch Confidential

Hildesheim
12 May 2017

From
CM-C11/EHP3

Our Reference
Jürgen Boes

Tel
+49(5121)49-3139

Report

Issue Confidential

Topic A-IVI Scope 2 Internal Pictures

3 XM Module (all US / CAN variants)



Hildesheim
12 May 2017

From
CM-C11/EHP3

Our Reference
Jürgen Boes

Tel
+49(5121)49-3139

Report

Issue Confidential

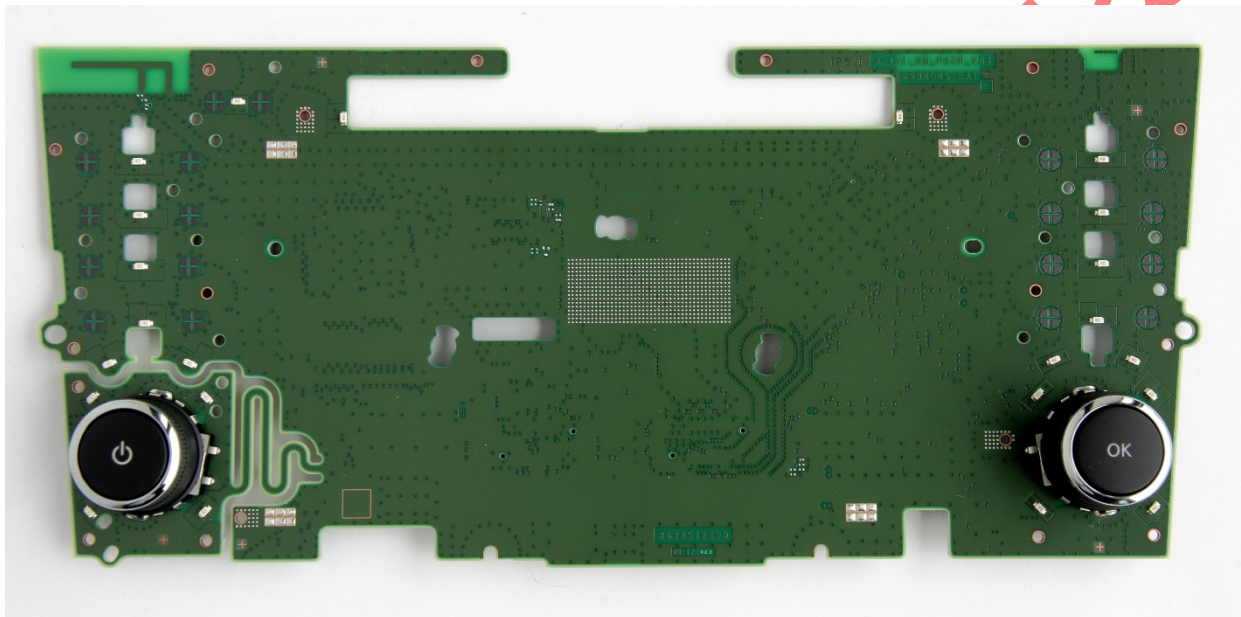
Topic A-IVI Scope 2 Internal Pictures

4 Switch PCBs

4.1 Switch PCB “P32R”

Circuit and layout name / version: A-IVI_SB_P32R_V01

4.1.1 Switch PCB “P32R” Top side



Bosch

Hildesheim
12 May 2017

From
CM-C11/EHP3

Our Reference
Jürgen Boes

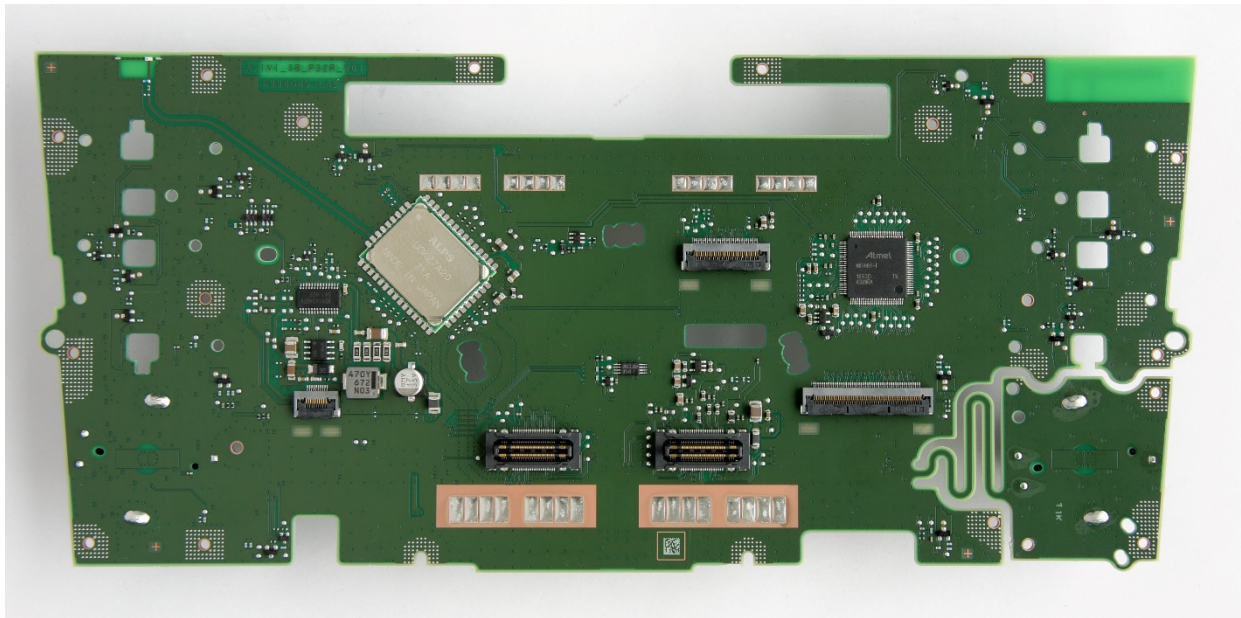
Tel
+49(5121)49-3139

Report

Issue Confidential

Topic A-IVI Scope 2 Internal Pictures

4.1.2 Switch PCB “P32R” Bottom side



Hildesheim
12 May 2017

From
CM-C11/EHP3

Our Reference
Jürgen Boes

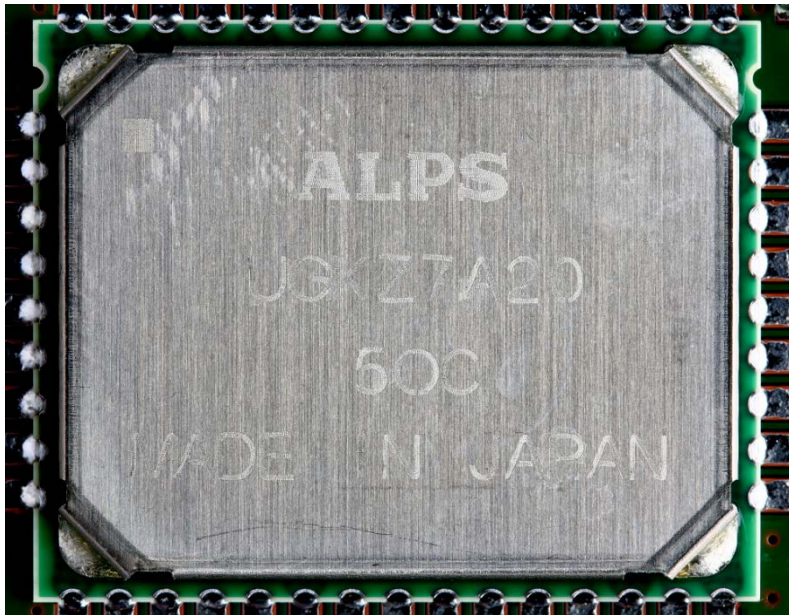
Tel
+49(5121)49-3139

Report

Issue Confidential

Topic A-IVI Scope 2 Internal Pictures

5 Bluetooth/Wi-Fi Module (all variants)



5.1 Bluetooth/Wi-Fi Module without Shielding (all variants)

