



Hildesheim
25 June 2018

From

Our Reference

Tel

Report

Issue **Confidential**
Topic **A-IVI Scope 2 Internal Pictures**
Description **Pictures of PCBs of A-IVI Scope 2 H61L units**

Product Type: Radio-Navigation-System
Model Names: AIVIH61L0
Brand: Robert Bosch Car Multimedia GmbH

Bosch Confidential



Hildesheim

25 June 2018

From

Our Reference

Tel

Report

Issue Confidential

Topic A-IVI Scope 2 Internal Pictures

Contend

- 1 Pictures of disassembly 3**
- 1.1 AIVIH61L0..... 3**
- 1.2 Main PCB "B" V02 6**
 - 1.2.1 Main PCB "B" V02 Top side US insertion..... 6
 - 1.2.2 Main PCB "B" V02 Bottom side US insertion 6
 - 1.2.3 Main PCB "B" V02 Top side Rest of World insertion 7
 - 1.2.4 Main PCB "B" V02 Bottom side Rest of World insertion 7
- 2 XM Module (all US / CAN variants) 8**
- 2.1 Switch PCB "H61L" 9**
 - 2.1.1 Switch PCB "H61L" Top side 9
 - 2.1.2 Switch PCB "H61L" Bottom side 9
- 3 Bluetooth/Wi-Fi Module (all variants) 10**
- 3.1 Bluetooth/Wi-Fi Module without Shielding (all variants)..... 10**
- 3.2 Bluetooth/Wi-Fi Module bottom side..... 11**
- 4 Sub PCBs 12**
- 4.1 Sub PCB "R" 12**
 - 4.1.1 Sub PCB "R" Top side 12
 - 4.1.2 Sub PCB "R" Bottom side 12

Bosch Confidential

Hildesheim
25 June 2018

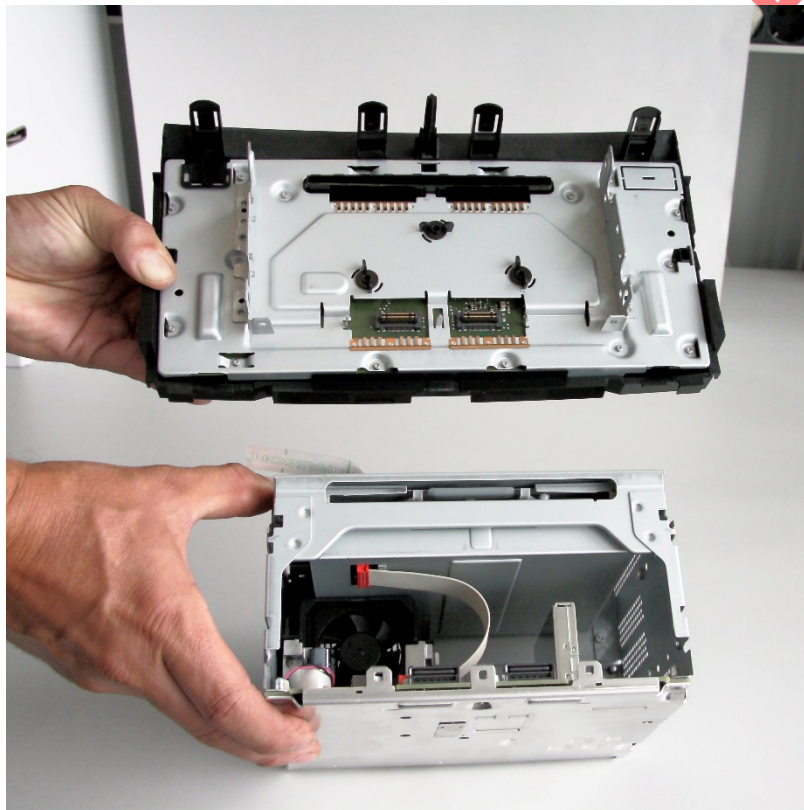
From	Our Reference	Tel
------	---------------	-----

Report
Issue Confidential
Topic A-IVI Scope 2 Internal Pictures

1 Pictures of disassembly

The information which PCB is used in which system is defined in the Model specific documentation.

1.1 AIVIH61L0



Hildesheim
25 June 2018

From

Our Reference

Tel

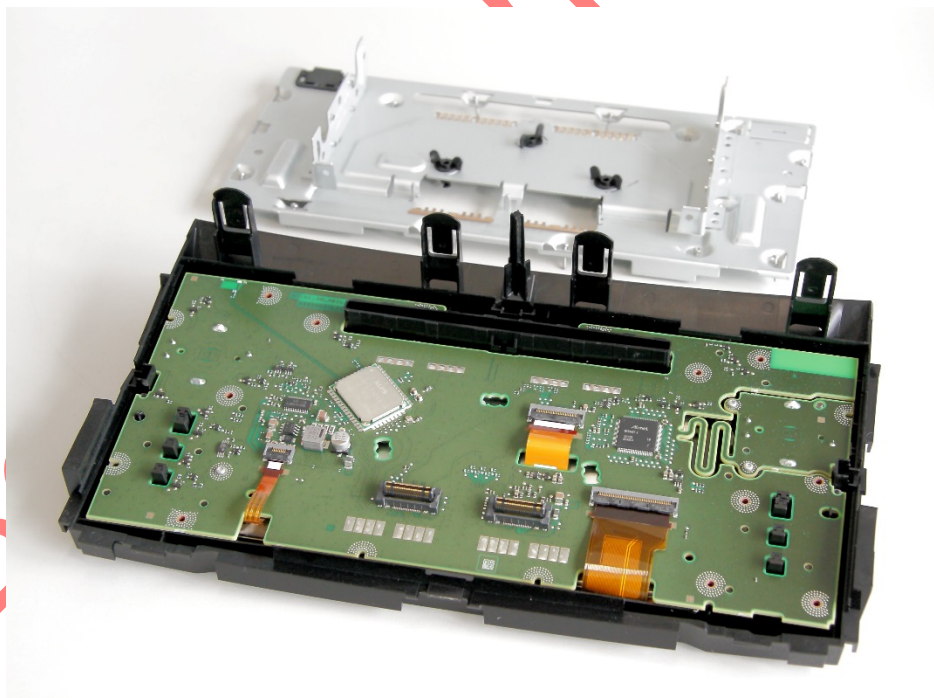
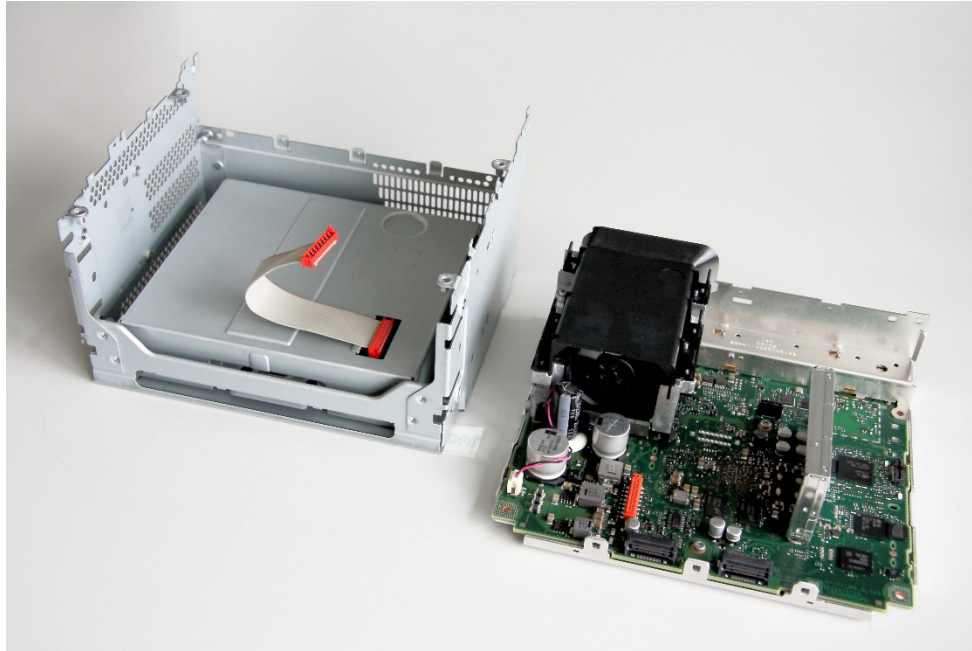
Report

Issue

Confidential

Topic

A-IVI Scope 2 Internal Pictures

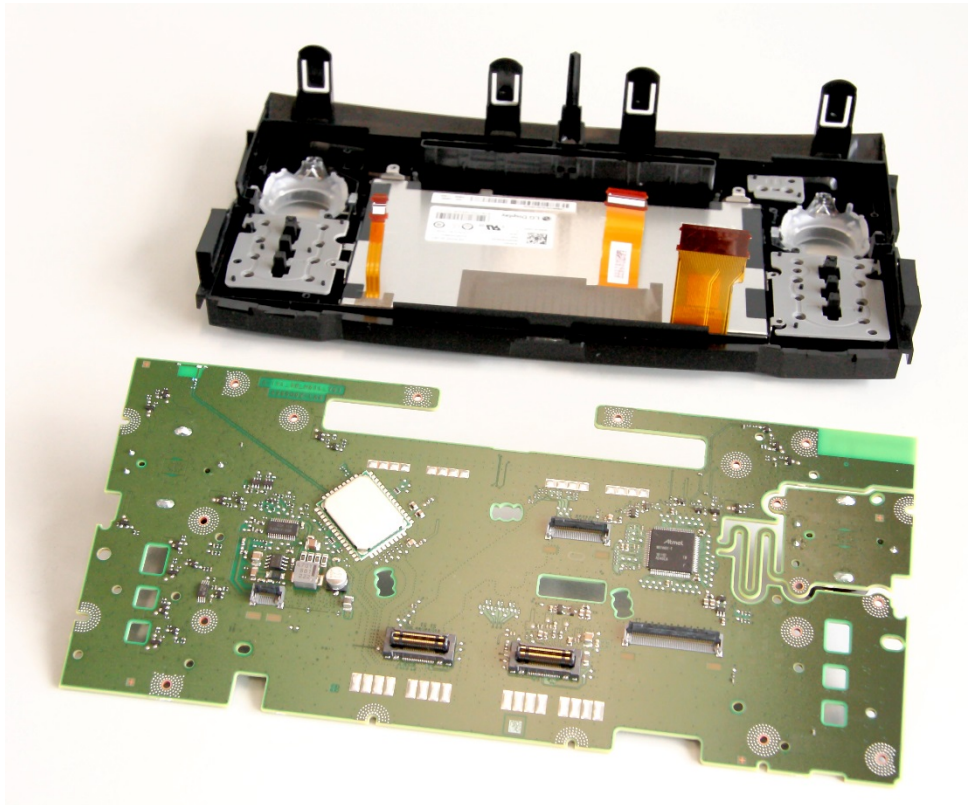




Hildesheim
25 June 2018

From	Our Reference	Tel
------	---------------	-----

Report
Issue Confidential
Topic A-IVI Scope 2 Internal Pictures



Bosch

Hildesheim
25 June 2018

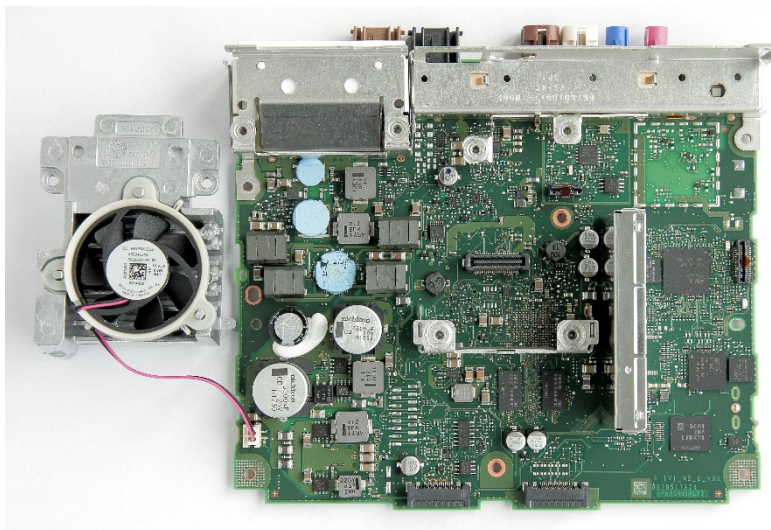
From | Our Reference | Tel

Report
Issue Confidential
Topic A-IVI Scope 2 Internal Pictures

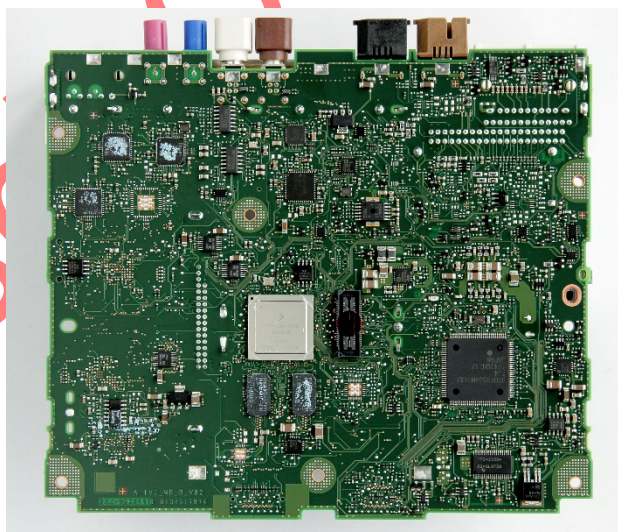
1.2 Main PCB "B" V02

Circuit and layout name / version: A-IVI_MB_B_V02
Update of "B" V01. Small layout improvements mainly for reliability

1.2.1 Main PCB "B" V02 Top side US insertion



1.2.2 Main PCB "B" V02 Bottom side US insertion



Hildesheim
25 June 2018

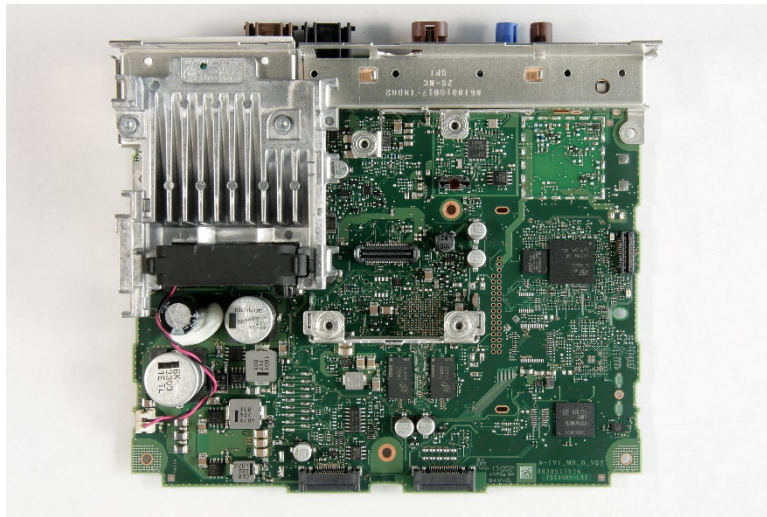
From | Our Reference | Tel

Report

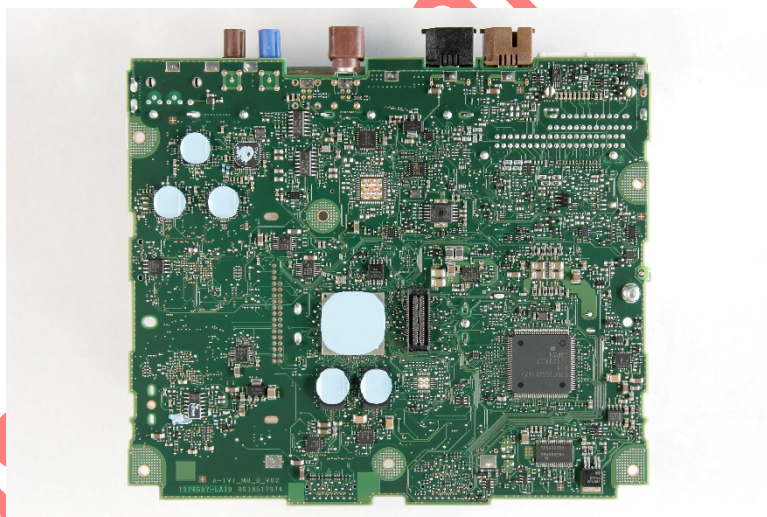
Issue Confidential

Topic A-IVI Scope 2 Internal Pictures

1.2.3 Main PCB "B" V02 Top side Rest of World insertion



1.2.4 Main PCB "B" V02 Bottom side Rest of World insertion



Hildesheim
25 June 2018

From	Our Reference	Tel
------	---------------	-----

Report
Issue Confidential
Topic A-IVI Scope 2 Internal Pictures

2 XM Module (all US / CAN variants)



Confidential

Hildesheim
25 June 2018

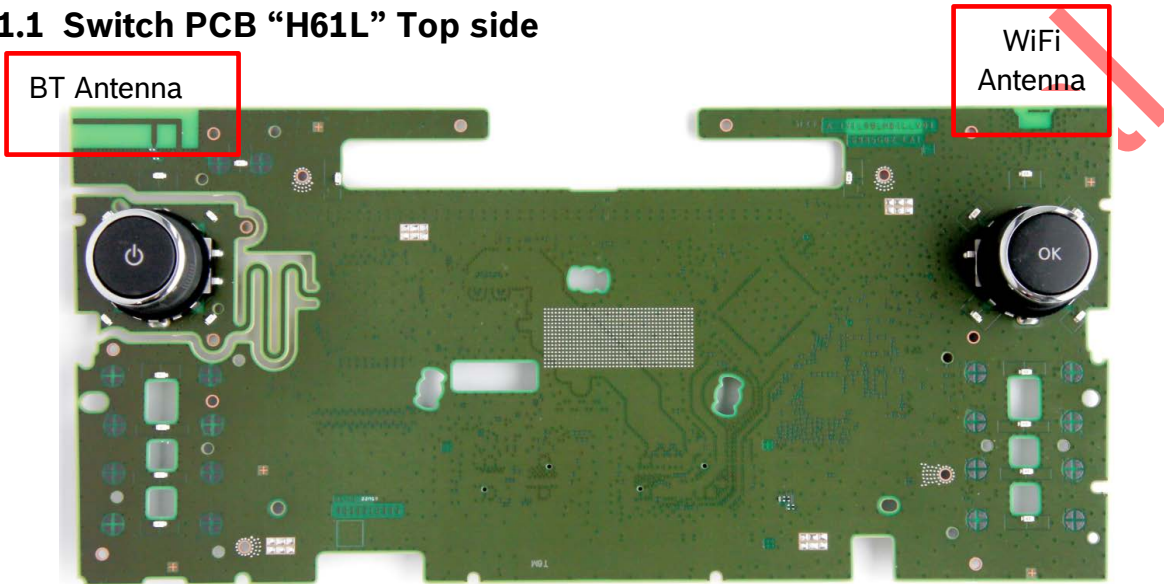
From | Our Reference | Tel

Report
Issue Confidential
Topic A-IVI Scope 2 Internal Pictures

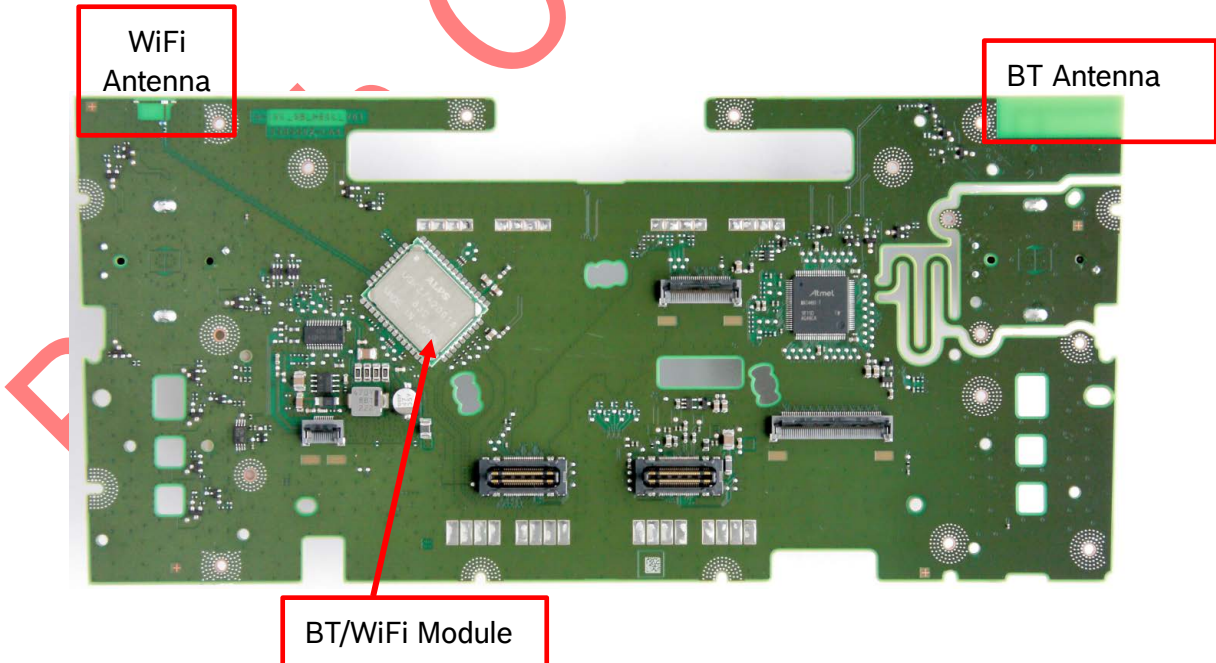
2.1 Switch PCB “H61L”

Circuit and layout name / version: A-IVI_SB_H61L_V01

2.1.1 Switch PCB “H61L” Top side



2.1.2 Switch PCB “H61L” Bottom side



Hildesheim
25 June 2018

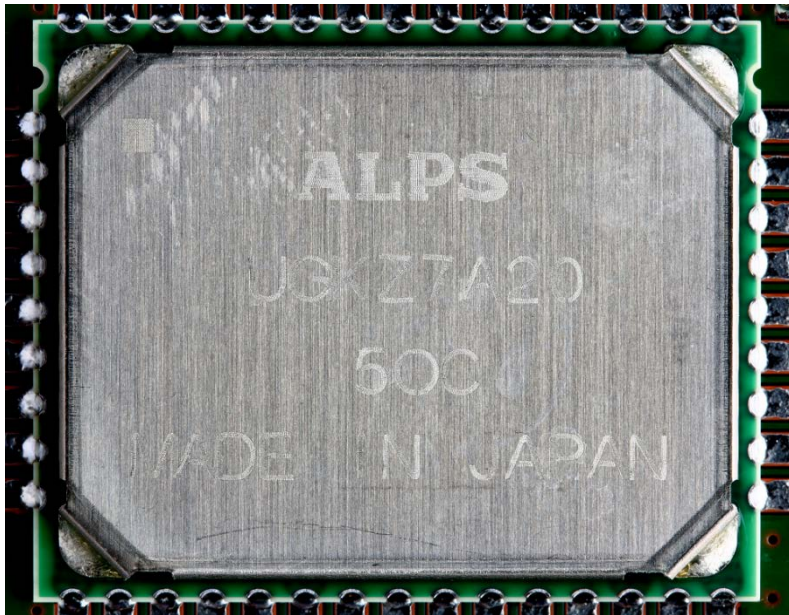
From | Our Reference | Tel

Report

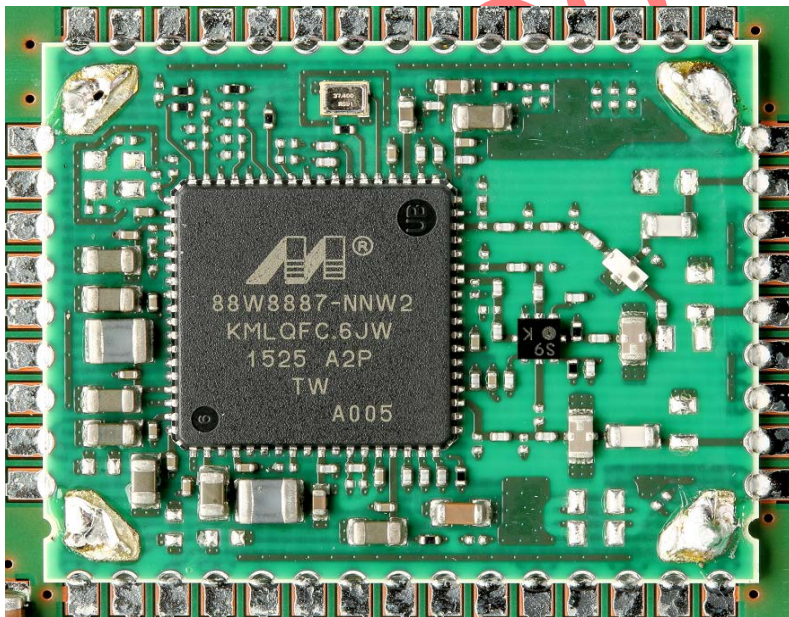
Issue Confidential

Topic A-IVI Scope 2 Internal Pictures

3 Bluetooth/Wi-Fi Module (all variants)



3.1 Bluetooth/Wi-Fi Module without Shielding (all variants)

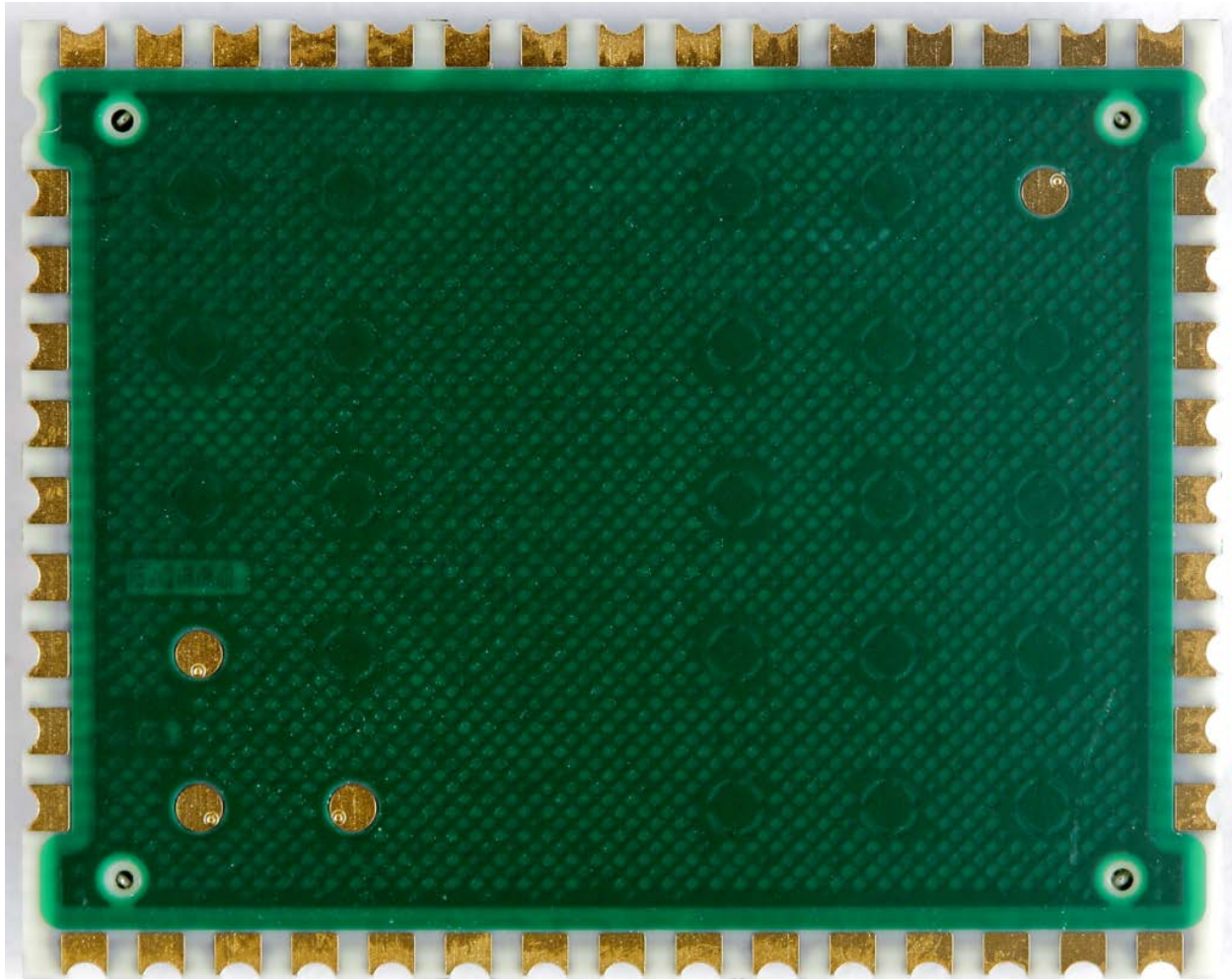


Hildesheim
25 June 2018

From	Our Reference	Tel
------	---------------	-----

Report
Issue Confidential
Topic A-IVI Scope 2 Internal Pictures

3.2 *Bluetooth/Wi-Fi Module bottom side*



Bo

Hildesheim
25 June 2018

From	Our Reference	Tel
------	---------------	-----

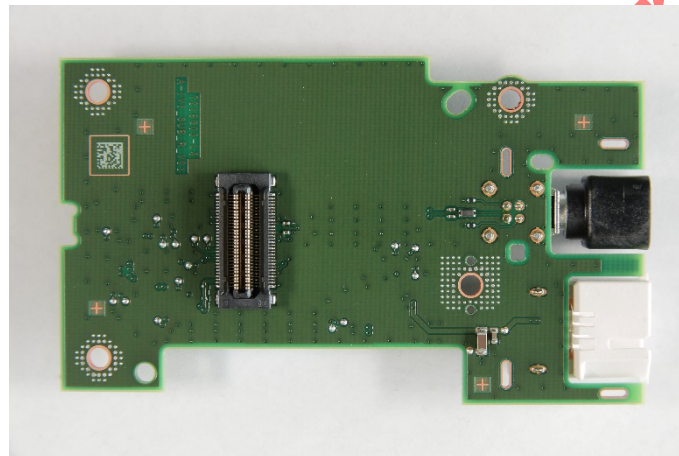
Report
Issue Confidential
Topic A-IVI Scope 2 Internal Pictures

4 Sub PCBs

4.1 Sub PCB "R"

Circuit and layout name / version: TBD
Used in Nissan units only.

4.1.1 Sub PCB "R" Top side



4.1.2 Sub PCB "R" Bottom side

