



Hildesheim
25 June 2018

From

Our Reference

Tel

Report

Issue Confidential
Topic **A-IVI Scope 2 Internal Pictures**
Description Pictures of PCBs used in A-IVI Scope 2 units

Product Type: Radio-Navigation-System
Model Names: AIVIH60A0
Brand: Robert Bosch Car Multimedia GmbH

Bosch Confidential



Hildesheim

25 June 2018

From

Our Reference

Tel

Report

Issue Confidential

Topic A-IVI Scope 2 Internal Pictures

Contend

- 1 Pictures of disassembly 3**
- 2 Main PCB 6**
 - 2.1 Main PCB "B" V02 6**
 - 2.1.1 Main PCB "B" V02 Top side Rest of World insertion 6
 - 2.1.2 Main PCB "B" V02 Bottom side Rest of World insertion 6
- 3 XM Module (all US / CAN variants) 8**
- 4 Switch PCBs 9**
 - 4.1 Switch PCB "H60A" 9**
 - 4.1.1 Switch PCB "H60A" Top side 9
 - 4.1.2 Switch PCB "H60A" Bottom side 9
- 5 Bluetooth/Wi-Fi Module (all variants) 11**
 - 5.1 Bluetooth/Wi-Fi Module without Shielding (all variants) 11**
 - 5.2 Bluetooth/Wi-Fi Module bottom side 12**
- 6 Sub PCBs 13**
 - 6.1 Sub PCB "R" 13**
 - 6.1.1 Sub PCB "R" Top side 13
 - 6.1.2 Sub PCB "R" Bottom side 14

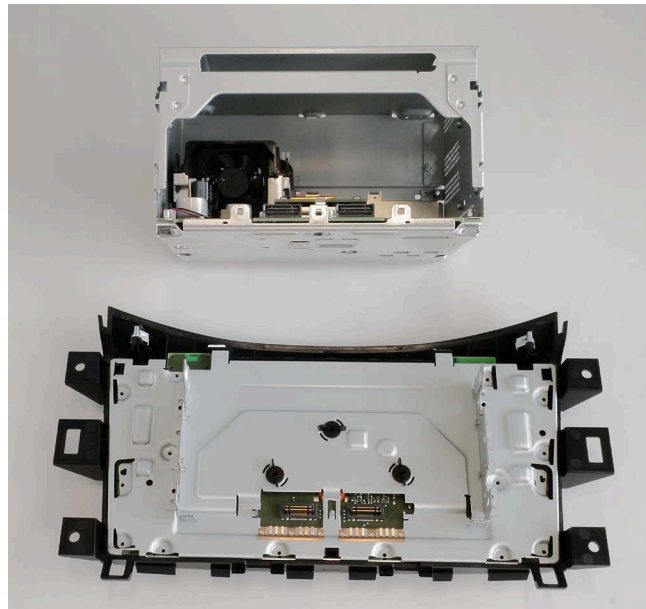
Bosch Confidential

Hildesheim
25 June 2018

From | Our Reference | Tel

Report
Issue Confidential
Topic A-IVI Scope 2 Internal Pictures

1 Pictures of disassembly



Bosch Confidential

Hildesheim
25 June 2018

From

Our Reference

Tel

Report

Issue

Confidential

Topic

A-IVI Scope 2 Internal Pictures



BOSCH

Hildesheim
25 June 2018

From

Our Reference

Tel

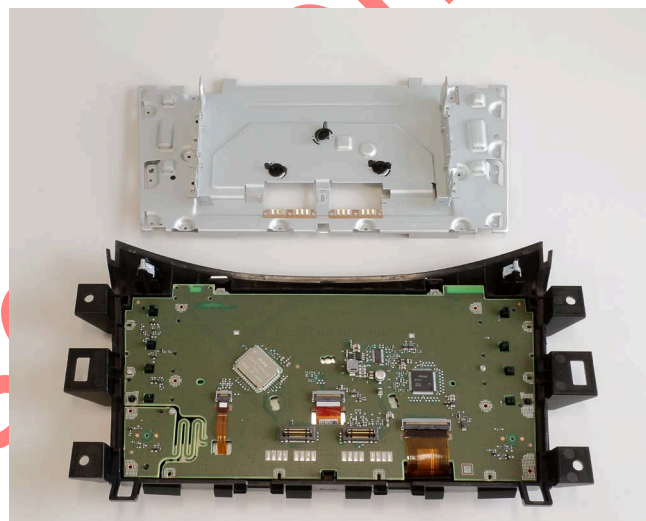
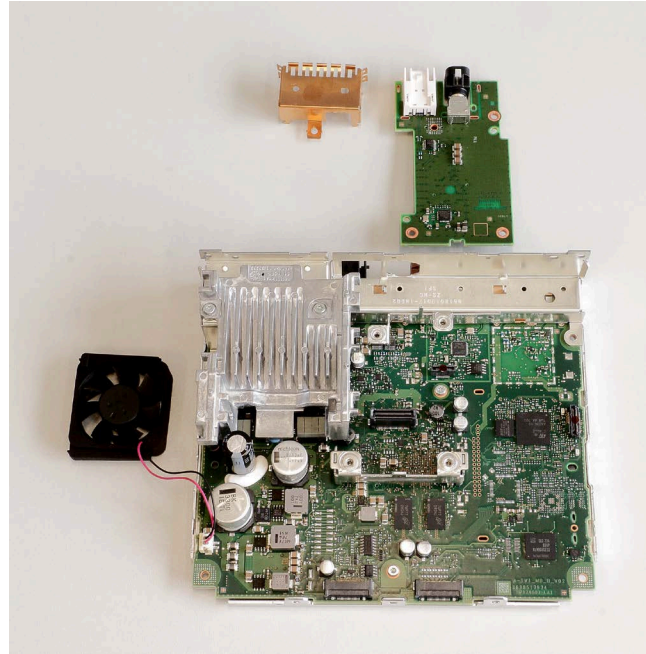
Report

Issue

Confidential

Topic

A-IVI Scope 2 Internal Pictures



Hildesheim
25 June 2018

From	Our Reference	Tel
------	---------------	-----

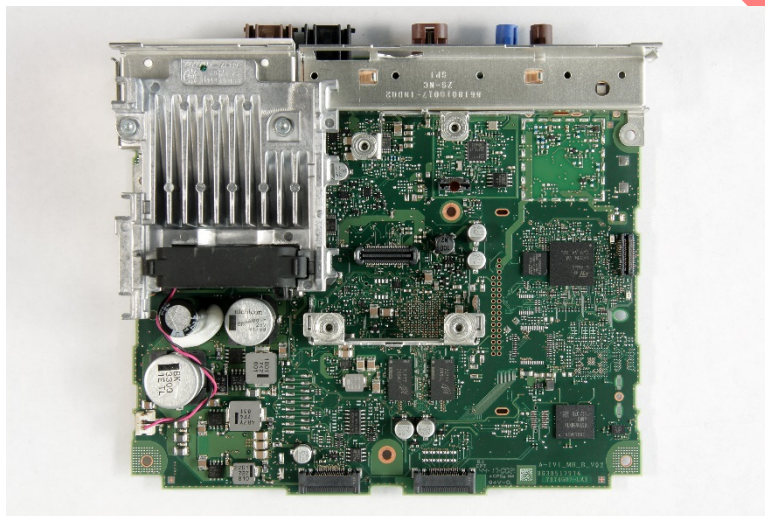
Report
Issue Confidential
Topic A-IVI Scope 2 Internal Pictures

2 Main PCB

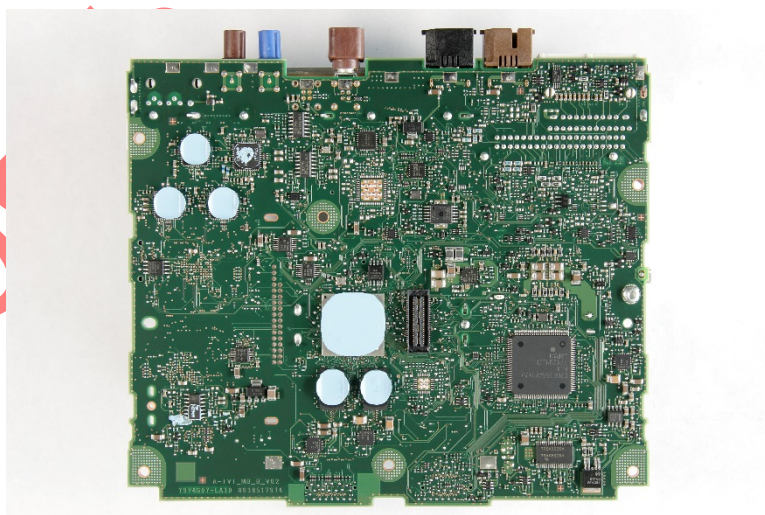
2.1 Main PCB “B” V02

Circuit and layout name / version: A-IVI_MB_B_V02
Update of “B” V01. Small layout improvements mainly for reliability

2.1.1 Main PCB “B” V02 Top side Rest of World insertion



2.1.2 Main PCB “B” V02 Bottom side Rest of World insertion





Hildesheim
25 June 2018

From

Our Reference

Tel

Report

Issue

Confidential

Topic

A-IVI Scope 2 Internal Pictures

Bosch Confidential



Hildesheim
25 June 2018

From

Our Reference

Tel

Report

Issue Confidential

Topic A-IVI Scope 2 Internal Pictures

3 XM Module (all US / CAN variants)



Confidential

Hildesheim
25 June 2018

From | Our Reference | Tel

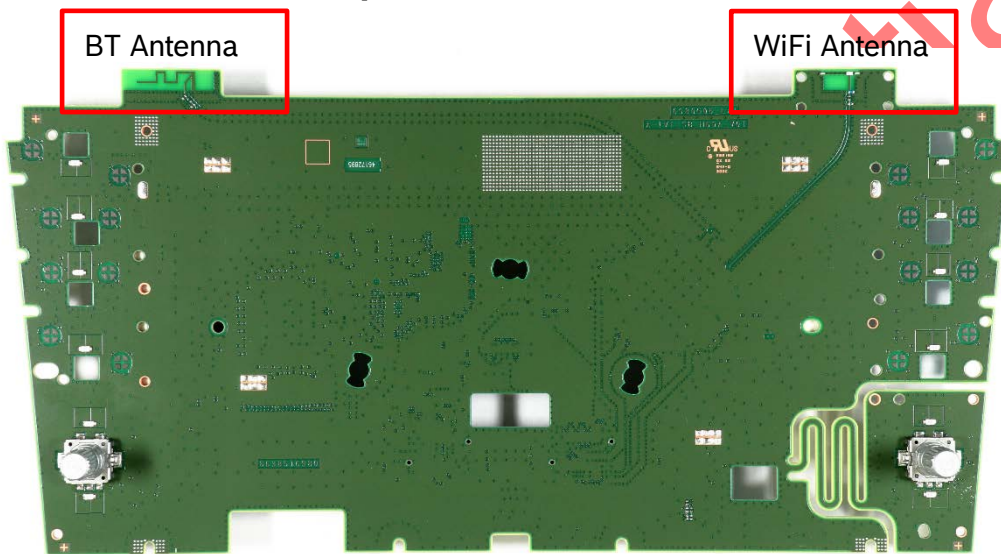
Report
Issue Confidential
Topic A-IVI Scope 2 Internal Pictures

4 Switch PCBs

4.1 Switch PCB "H60A"

Circuit and layout name / version: A-IVI_SB_H60A_V01

4.1.1 Switch PCB "H60A" Top side

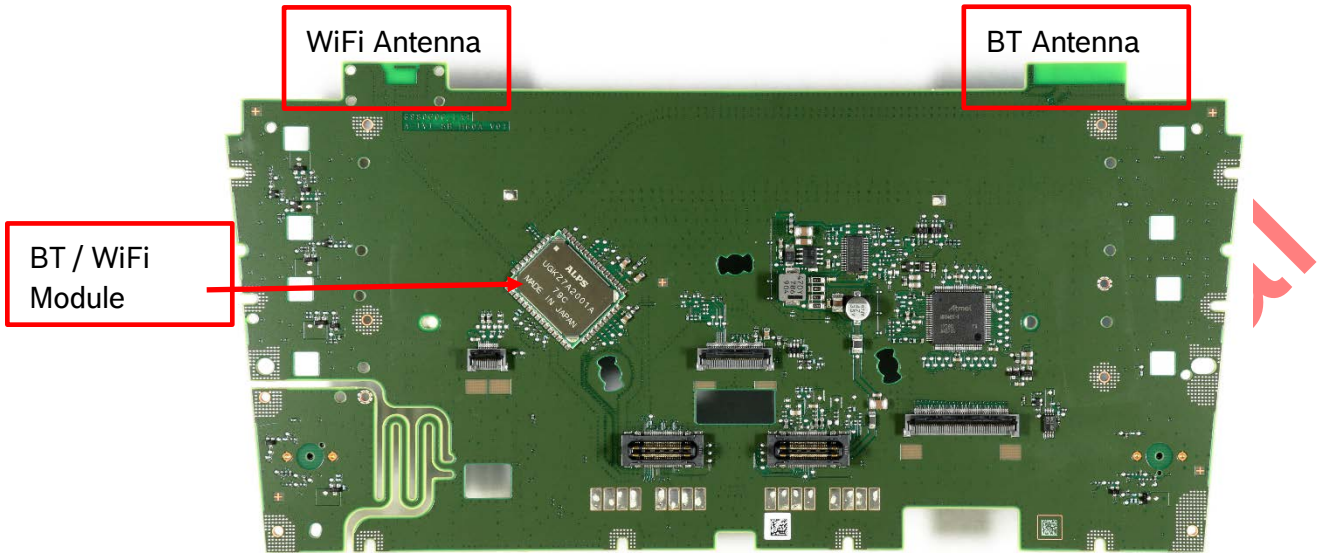


4.1.2 Switch PCB "H60A" Bottom side

Hildesheim
25 June 2018

From | Our Reference | Tel

Report
Issue Confidential
Topic A-IVI Scope 2 Internal Pictures

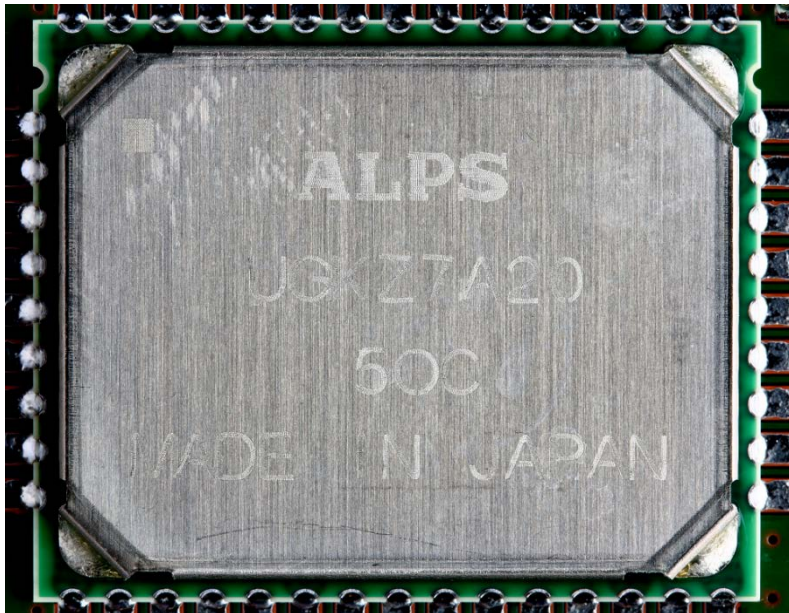


Hildesheim
25 June 2018

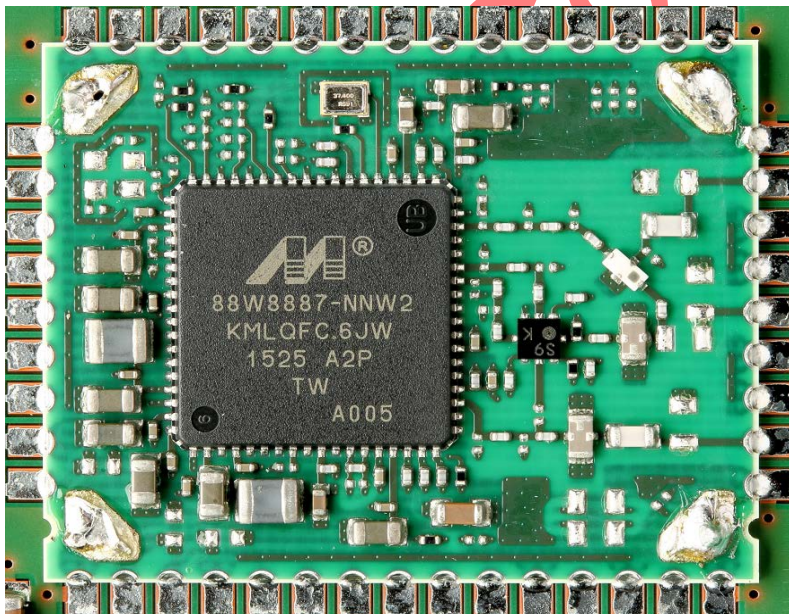
From | Our Reference | Tel

Report
Issue Confidential
Topic A-IVI Scope 2 Internal Pictures

5 Bluetooth/Wi-Fi Module (all variants)



5.1 Bluetooth/Wi-Fi Module without Shielding (all variants)

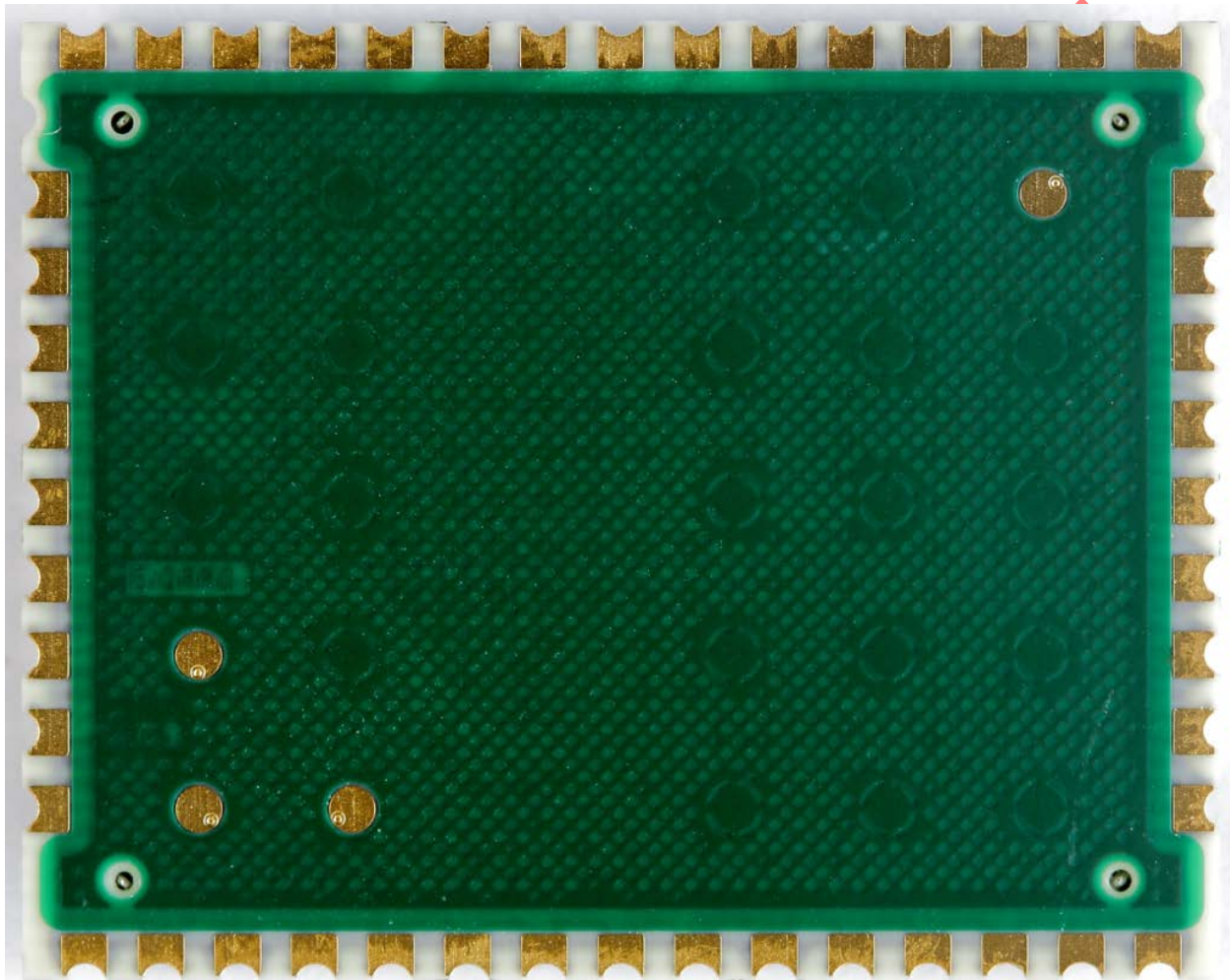


Hildesheim
25 June 2018

From | Our Reference | Tel

Report
Issue Confidential
Topic A-IVI Scope 2 Internal Pictures

5.2 Bluetooth/Wi-Fi Module bottom side



Bo

Hildesheim
25 June 2018

From	Our Reference	Tel
------	---------------	-----

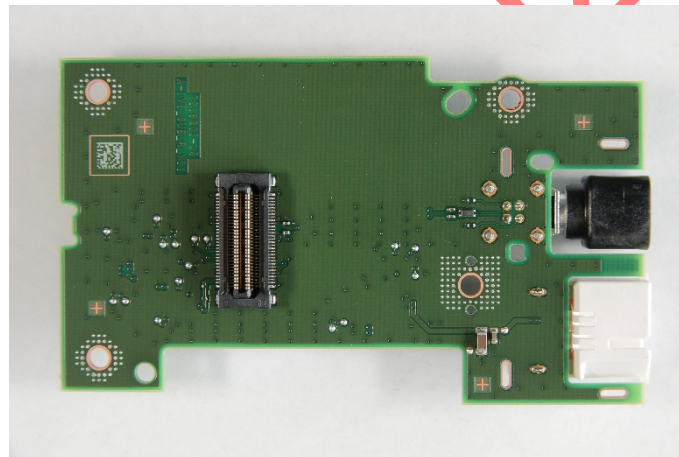
Report
Issue Confidential
Topic A-IVI Scope 2 Internal Pictures

6 Sub PCBs

6.1 Sub PCB "R"

Circuit and layout name / version: TBD
Used in Nissan units only.

6.1.1 Sub PCB "R" Top side



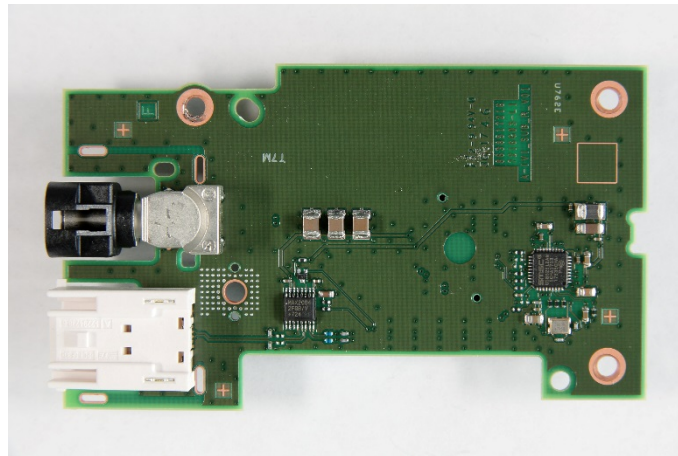
Bosch

Hildesheim
25 June 2018

From	Our Reference	Tel
------	---------------	-----

Report
Issue Confidential
Topic A-IVI Scope 2 Internal Pictures

6.1.2 Sub PCB "R" Bottom side



Bosch Confidential