

Hildesheim
27 September 2018

From	Our Reference	Tel
------	---------------	-----

Report

Issue **Confidential**
Topic **A-IVI Scope 2 Internal Pictures**
Description **Pictures of PCBs used in A-IVI Scope 2 units**

Product Type: Radio-Navigation-System
Model Names: AIVIB12P0
Brand: Robert Bosch Car Multimedia GmbH

Bosch Confidential



Hildesheim

27 September 2018

From

Our Reference

Tel

Report

Issue Confidential

Topic A-IVI Scope 2 Internal Pictures

Contend

- 1 Pictures of disassembly 3**
- 2 Main PCB 5**
 - 2.1 Main PCB "B" V02 5**
 - 2.1.1 Main PCB "B" V02 Top side Rest of World insertion 5
 - 2.1.2 Main PCB "B" V02 Bottom side Rest of World insertion 6
- 3 XM Module (all US / CAN variants) 7**
- 4 Switch PCBs 8**
 - 4.1 Switch PCB "B12P" 8**
 - 4.1.1 Switch PCB "B12P" Top side 8
 - 4.1.2 Switch PCB "B12P" Bottom side 9
- 5 Bluetooth/Wi-Fi Module (all variants) 10**
 - 5.1 Bluetooth/Wi-Fi Module without Shielding (all variants) 10**
 - 5.2 Bluetooth/Wi-Fi Module bottom side 11**
- 6 Sub PCBs 12**
 - 6.1 Sub PCB "R" 12**
 - 6.1.1 Sub PCB "R" Top side 12
 - 6.1.2 Sub PCB "R" Bottom side 13

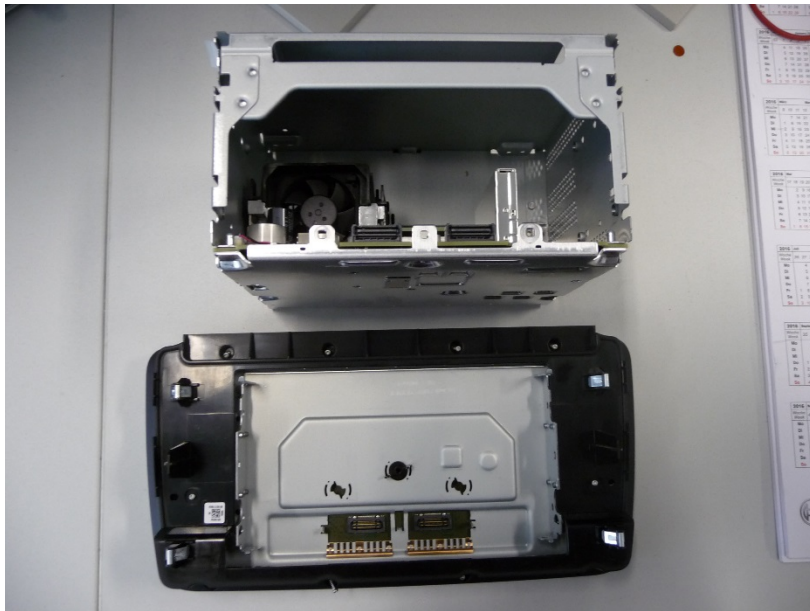
Bosch Confidential

Hildesheim
27 September 2018

From | Our Reference | Tel

Report
Issue Confidential
Topic A-IVI Scope 2 Internal Pictures

1 Pictures of disassembly





Hildesheim

27 September 2018

From

Our Reference

Tel

Report

Issue

Confidential

Topic

A-IVI Scope 2 Internal Pictures



Hildesheim
27 September 2018

From | Our Reference | Tel

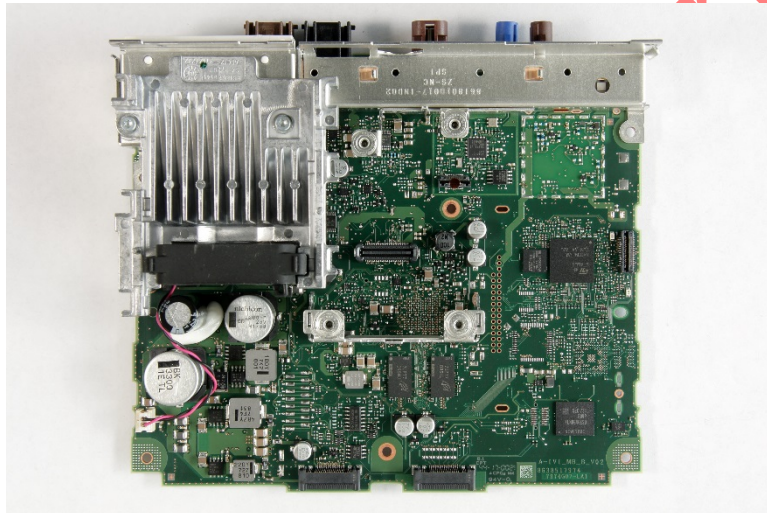
Report
Issue Confidential
Topic A-IVI Scope 2 Internal Pictures

2 Main PCB

2.1 Main PCB “B” V02

Circuit and layout name / version: A-IVI_MB_B_V02
Update of “B” V01. Small layout improvements mainly for reliability

2.1.1 Main PCB “B” V02 Top side Rest of World insertion



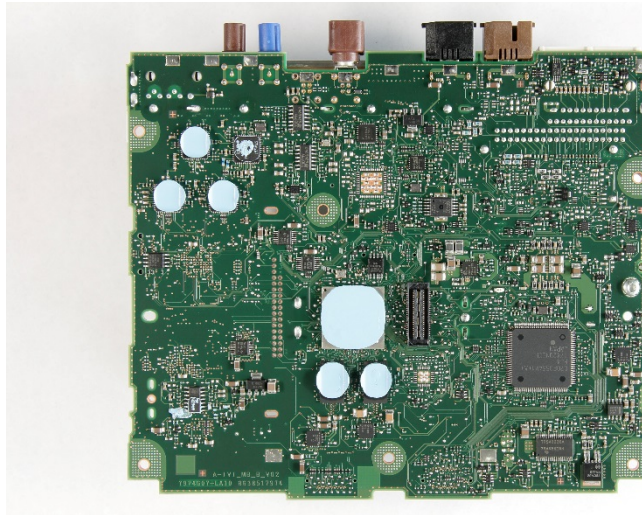
Bosch

Hildesheim
27 September 2018

From | Our Reference | Tel

Report
Issue Confidential
Topic A-IVI Scope 2 Internal Pictures

2.1.2 Main PCB "B" V02 Bottom side Rest of World insertion



Bosch Confidential

Hildesheim
27 September 2018

From	Our Reference	Tel
------	---------------	-----

Report
Issue Confidential
Topic A-IVI Scope 2 Internal Pictures

3 XM Module (all US / CAN variants)



Confidential

Bosch Confidential

Hildesheim
27 September 2018

From | Our Reference | Tel

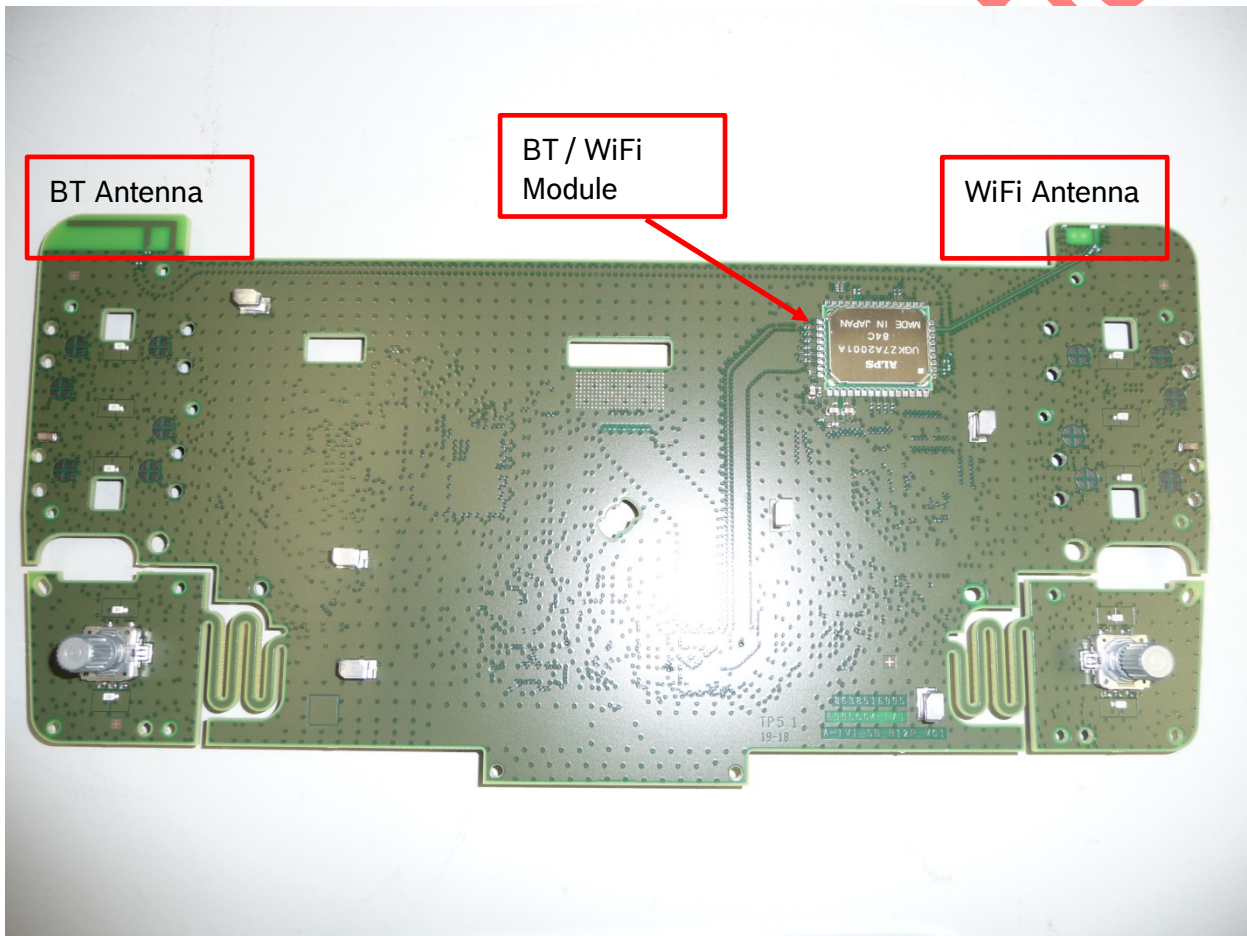
Report
Issue Confidential
Topic A-IVI Scope 2 Internal Pictures

4 Switch PCBs

4.1 Switch PCB "B12P"

Circuit and layout name / version: A-IVI_SB_B12P_V01

4.1.1 Switch PCB "B12P" Top side

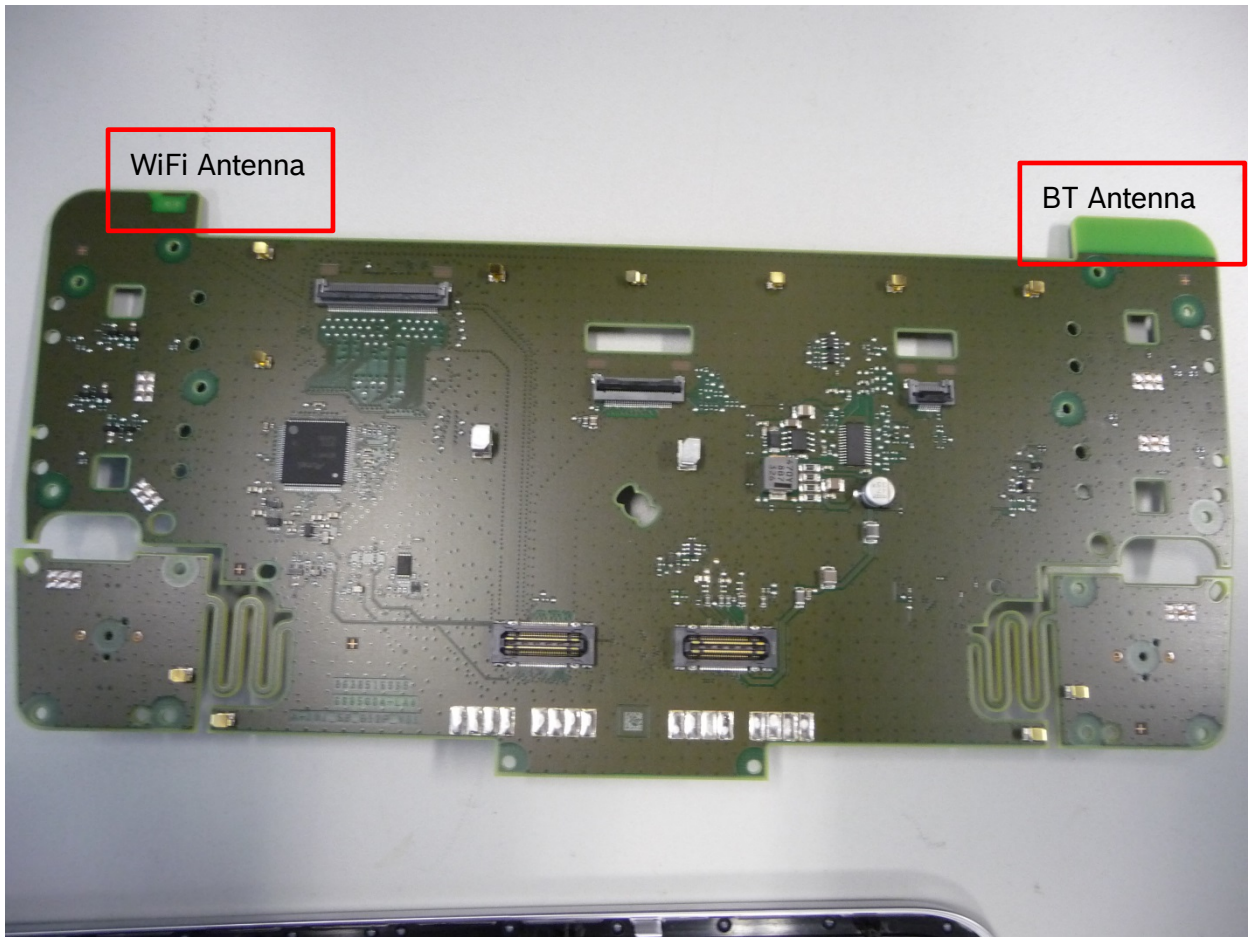


Hildesheim
27 September 2018

From | Our Reference | Tel

Report
Issue Confidential
Topic A-IVI Scope 2 Internal Pictures

4.1.2 Switch PCB “B12P” Bottom side



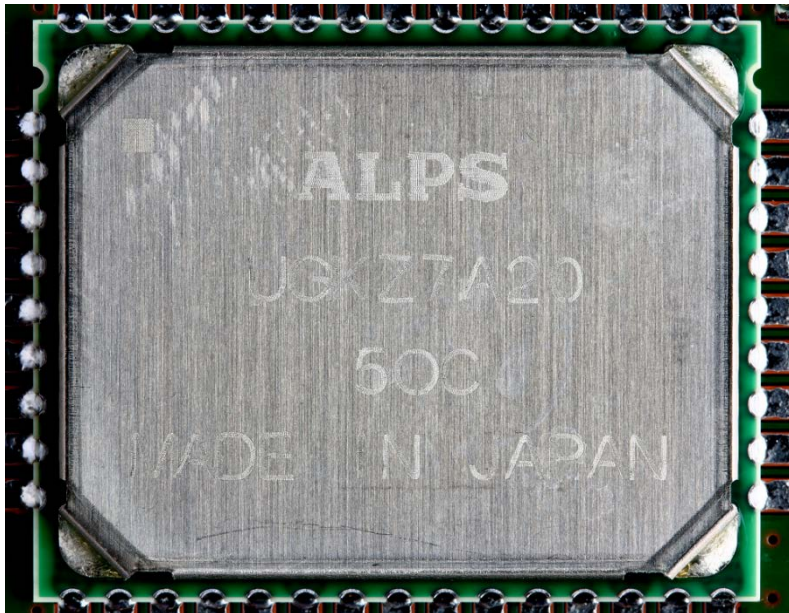
BOSCH

Hildesheim
27 September 2018

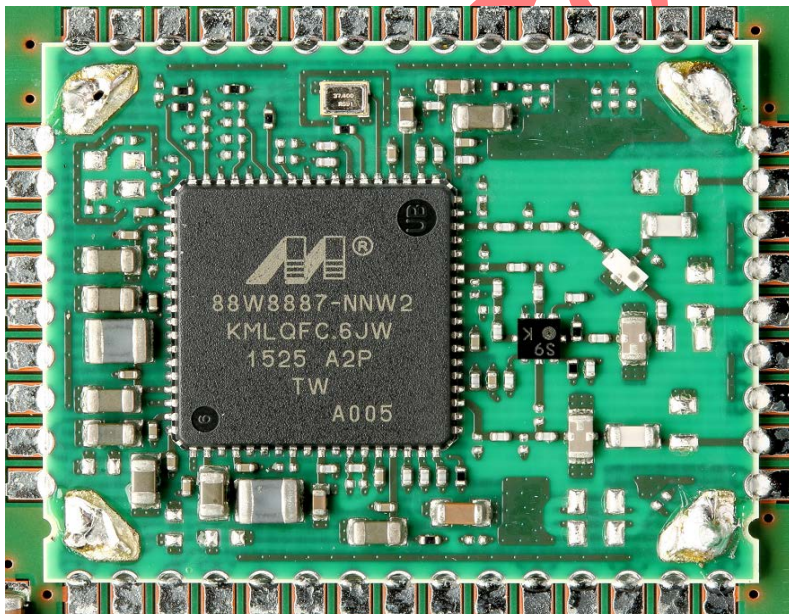
From | Our Reference | Tel

Report
Issue Confidential
Topic A-IVI Scope 2 Internal Pictures

5 Bluetooth/Wi-Fi Module (all variants)



5.1 Bluetooth/Wi-Fi Module without Shielding (all variants)

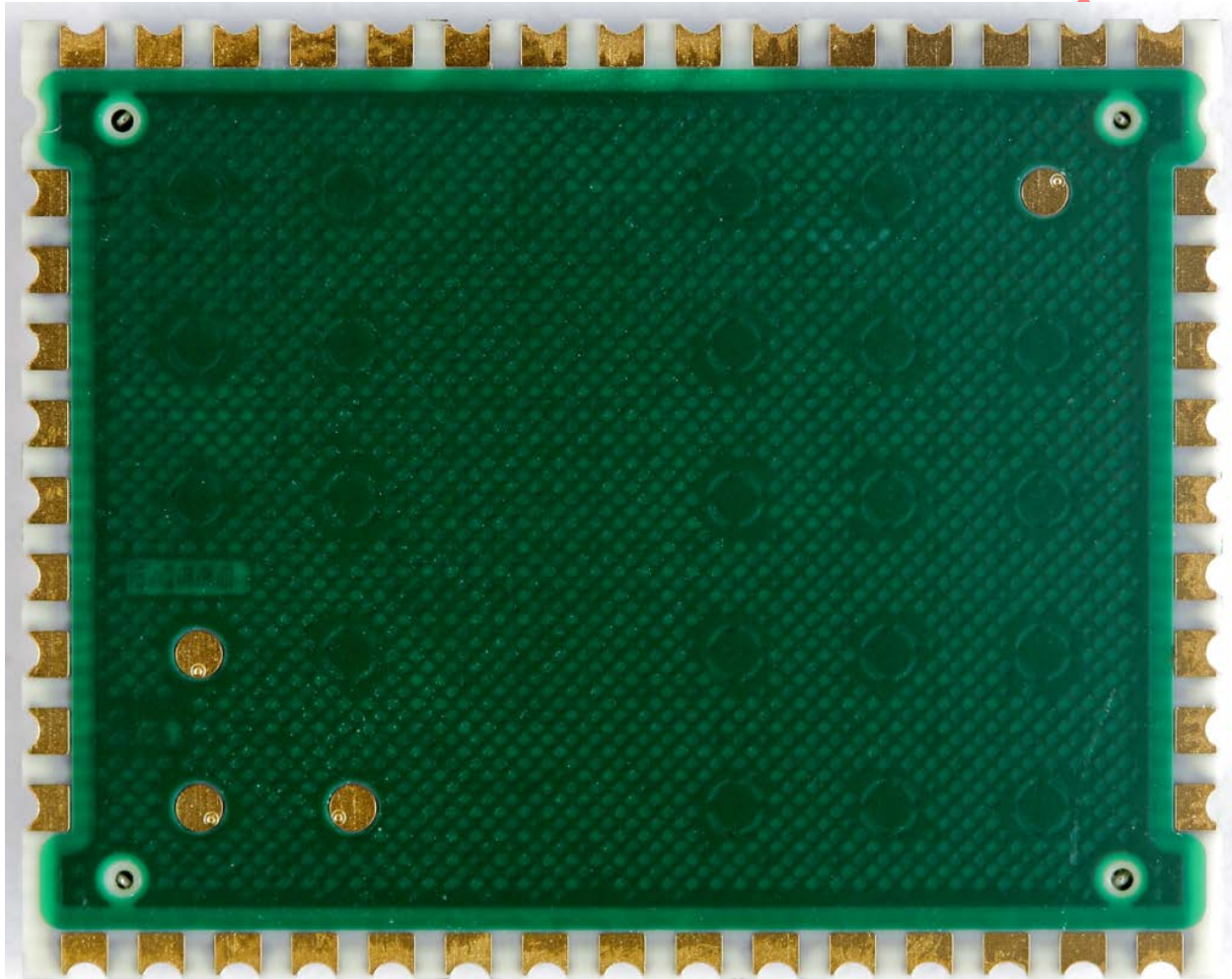


Hildesheim
27 September 2018

From _____ Our Reference _____ Tel _____

Report
Issue Confidential
Topic A-IVI Scope 2 Internal Pictures

5.2 Bluetooth/Wi-Fi Module bottom side



Bo

Hildesheim
27 September 2018

From	Our Reference	Tel
------	---------------	-----

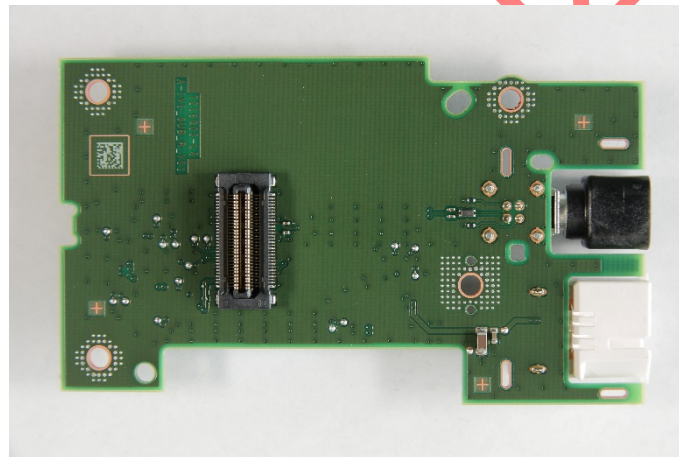
Report
Issue Confidential
Topic A-IVI Scope 2 Internal Pictures

6 Sub PCBs

6.1 Sub PCB "R"

Circuit and layout name / version: TBD
Used in Nissan units only.

6.1.1 Sub PCB "R" Top side



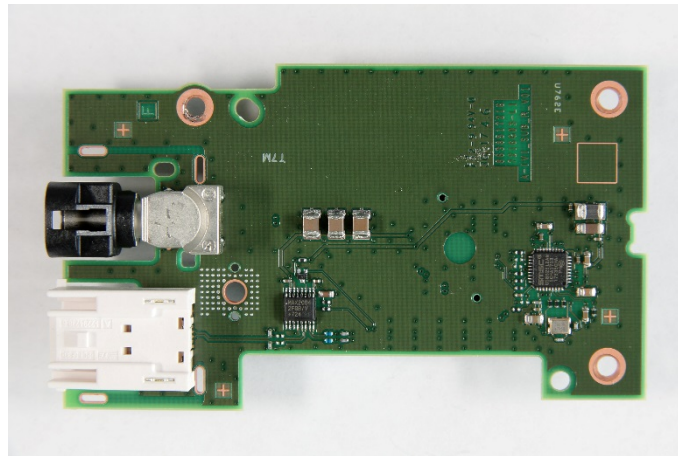
Bosch

Hildesheim
27 September 2018

From	Our Reference	Tel
------	---------------	-----

Report
Issue Confidential
Topic A-IVI Scope 2 Internal Pictures

6.1.2 Sub PCB "R" Bottom side



Bosch Confidential