

## Home Automation System Interface

### I . Features



EL03-76  
Middle control transmitter

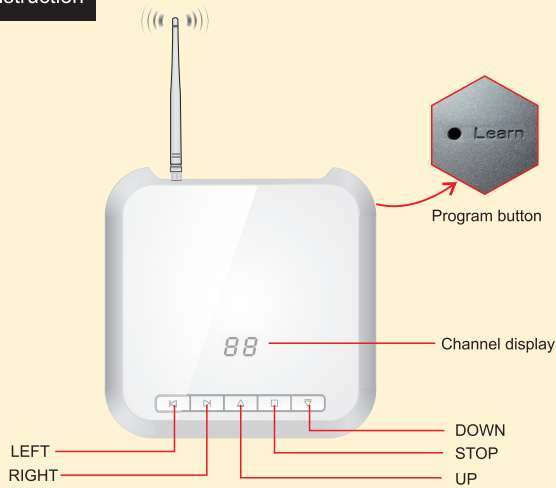
- ⊙ DC12V, safety voltage
- ⊙ Multiple units can be powered from a single power supply through the RJ45 connector.
- ⊙ Specialized RF transmitting antenna allows remote control over larger area
- ⊙ Double RS-485/232 interfaces to connect up to 255pcs gateway controllers.
- ⊙ Dual master dry contact ports for sub-group and group control.
- ⊙ External dry contact switch for local group control.
- ⊙ 16 Channel for individual and group control, also able to build up group control of any channel through the Rs485 operation.
- ⊙ Have all transmitters functions
- ⊙ Compatible to all A-OK products

### II . Parameters

Model number	Voltage	Working Temp.	Transmission power	Current	Frequency	Channel quantity	Operation
EL03-76	DC 12V	-20°C~55°C	≤10mW	≤100mA	433.92MHz	16 Channels	PC control/manual control

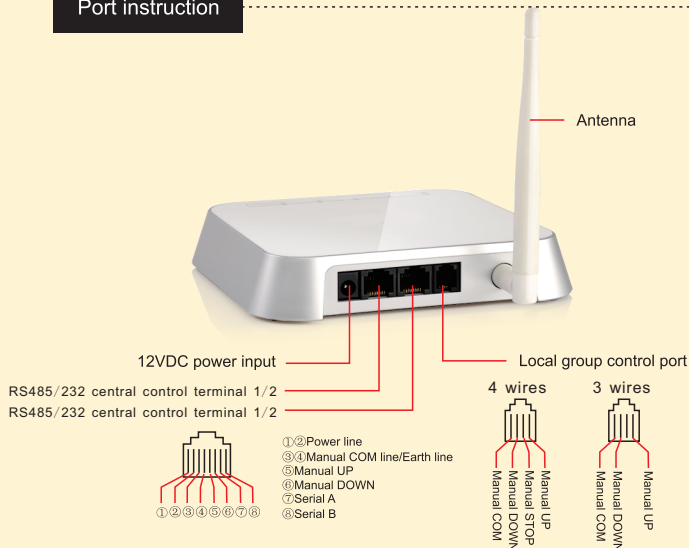
### III . Button and port instruction

#### Button instruction



- Program button: to program with receivers
- LOGO indicator: blue light display
- Channel display: indicate from 1 to 16
- LEFT: to change channel by decreasing figure
- RIGHT: to change channel by increasing figure
- UP: to control motor UP
- STOP: to control motor STOP
- DOWN: to control motor DOWN

#### Port instruction



**Lock Channel:** If the application takes less than 16 channels, people can lock the extra channels for easier and flexible operation.

Choose the wanted channel numbers by left and right selecting button, then press and hold the stop and left or right button on the device for 3 seconds till the locked channel numbers display, then released them. The same operation to unlock channel.

**Local Group Control:** to group control all the channel on the device.

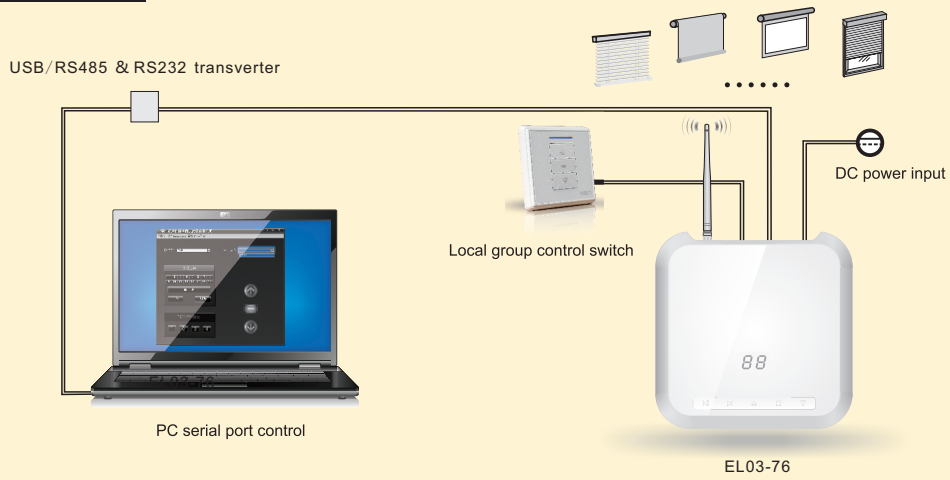
4 wires connection: Press the UP, STOP, DOWN on the device to control all the channels UP, STOP and DOWN.

3 wires connection: Press the UP, UP+DOWN, DOWN on the device to control all the channels UP, STOP and DOWN.

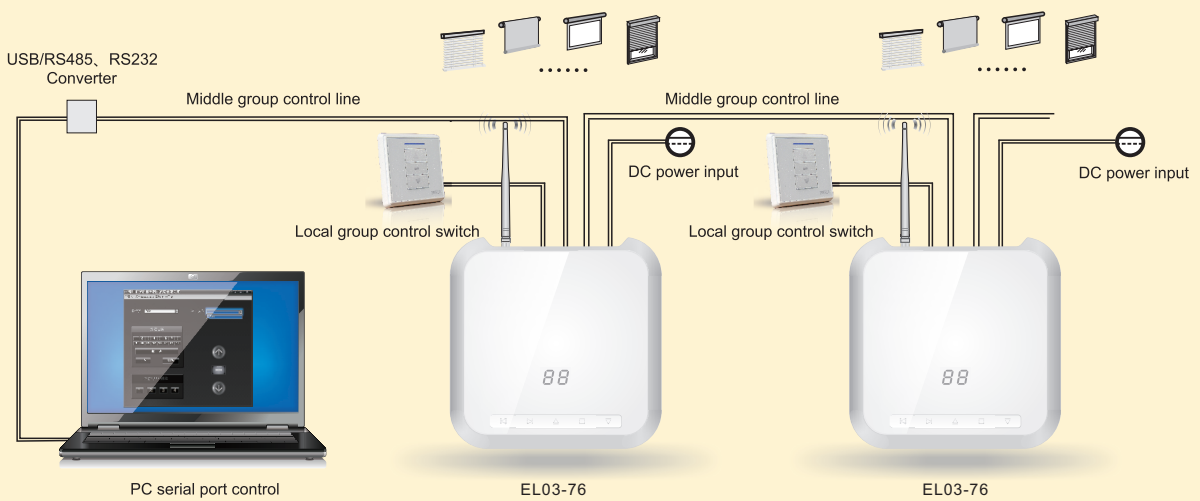
**RS485/RS232 central control:** to control any channel or multiple channels via the PC software.

## IV. Application Solutions

### Single control solution



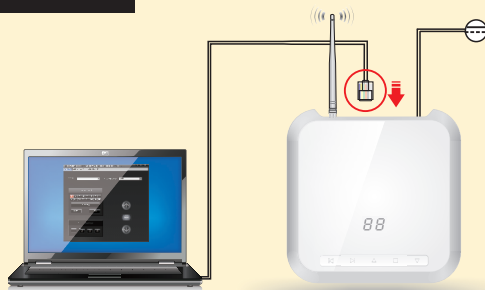
### Group control solution



## V. ID Setting

Maximum ID 255, 16 channels

### Setting ID by software



① Open the software, choose english language



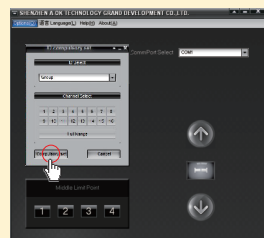
② Select the correct serial port



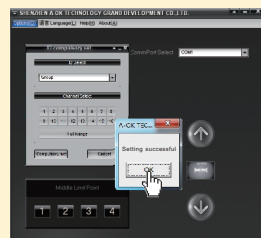
③ Click "options" at the top of left corner, choose "motor ID and channel settings"



④ Set ID and channel



⑤ Click compulsory set



⑥ Click OK

## **FCC Warning**

This device complies with part 15 of the FCC Rules. Operation is subject to the following two conditions: (1) This device may not cause harmful interference, and (2) this device must accept any interference received, including interference that may cause undesired operation. Any Changes or modifications not expressly approved by the party responsible for compliance could void the user's authority to operate the equipment. This equipment has been tested and found to comply with the limits for a Class B digital device, pursuant to part 15 of the FCC Rules. These limits are designed to provide reasonable protection against harmful interference in a residential installation. This equipment generates uses and can radiate radio frequency energy and, if not installed and used in accordance with the instructions, may cause harmful interference to radio communications. However, there is no guarantee that interference will not occur in a particular installation. If this equipment does cause harmful interference to radio or television reception, which can be determined by turning the equipment off and on, the user is encouraged to try to correct the interference by one or more of the following measures:

- Reorient or relocate the receiving antenna.
- Increase the separation between the equipment and receiver.
- Connect the equipment into an outlet on a circuit different from that to which the receiver is connected.
- Consult the dealer or an experienced radio/TV technician for help. The device has been evaluated to meet general RF exposure requirement. The device can be used in portable exposure condition without restriction.

**FCC ID: YAV-EL0376**