

# **IEEE 802.11n Wireless USB 2.0 Adapter**

## **User's Guide**

WN7522C 1-LF-CN  
June 2010  
R01

**Trademarks:**

Other product and company names are trademarks or registered trademarks of their respective holders.

# COMPLIANCES

## Federal Communication Commission Interference Statement

This equipment has been tested and found to comply with the limits for a Class B digital device, pursuant to Part 15 of the FCC Rules. These limits are designed to provide reasonable protection against harmful interference in a residential installation. This equipment generates, uses and can radiate radio frequency energy and, if not installed and used in accordance with the instructions, may cause harmful interference to radio communications. However, there is no guarantee that interference will not occur in a particular installation. If this equipment does cause harmful interference to radio or television reception, which can be determined by turning the equipment off and on, the user is encouraged to try to correct the interference by one of the following measures:

- Reorient or relocate the receiving antenna.
- Increase the separation between the equipment and receiver.
- Connect the equipment into an outlet on a circuit different from that to which the receiver is connected.
- Consult the dealer or an experienced radio/TV technician for help.

This device complies with Part 15 of the FCC Rules. Operation is subject to the following two conditions: (1) This device may not cause harmful interference, and (2) this device must accept any interference received, including interference that may cause undesired operation.

**FCC Caution:** Any changes or modifications not expressly approved by the party responsible for compliance could void the user's authority to operate this equipment.

### IMPORTANT NOTE:

#### FCC Radiation Exposure Statement:

This equipment complies with FCC radiation exposure limits set forth for an uncontrolled environment. This equipment should be installed and operated with minimum distance 20cm between the radiator & your body.

This transmitter must not be co-located or operating in conjunction with any other antenna or transmitter.

2.4GHz operation of this product in the U.S.A. is firmware-limited to channels 1 through 11.

## **IC Statement**

This device complies with RSS-210 of the Industry Canada Rules.

Operation is subject to the following two conditions:

- 1) this device may not cause interference and
- 2) this device must accept any interference, including interference that may cause undesired operation of the device

This Class B digital apparatus complies with Canadian ICES-003.

Cet appareil numérique de la class B est conforme a la norme NMB-003 du Canada.

## **IMPORTANT NOTE:**

### **IC Radiation Exposure Statement:**

This equipment complies with Canada radiation exposure limits set forth for uncontrolled environments. This equipment should be installed and operated with minimum distance 20cm between the radiator & your body.

This transmitter must not be co-located or operating in conjunction with any other antenna or transmitter.

2.4GHz operation of this product in Canada is firmware-limited to channels 1 through 11.

# 802.11N WIRELESS USB ADAPTER

The 802.11N Wireless USB Adapter (WN7522C 1-LF-CN) is another cutting edge introduction in 2.4GHz wireless communication for 11n wireless network connection. Designed for both the home and office, this wireless USB2.0 adapter provides the speed, coverage and security expected by today's wireless users. The WN7522C 1-LF-CN is IEEE 802.11n compliant while maintaining full backwards compatibility with the 802.11g and 802.11b standards. This standard utilizes advanced MIMO (Multiple-In, Multiple-Out) technology to deliver incredible speed and range. The WN7522C 1-LF-CN provides better performance than existing 802.11g technology. Upgrading to wireless 11n network provides an excellent solution for sharing an Internet connection and files such as video, music, photos, and documents. With security being a key consideration, WN7522C 1-LF-CN supports the WPA and WPA2 wireless encryption standards, which prevent unauthorized access to wireless networks and ensure data is secure. Once installed the WLAN utility allows you to scan for available wireless networks and manage multiple network profiles so connecting becomes instantaneous.

## Features

- IEEE802.11n compliant
- Wireless speeds up to 300 Mbps with 40 MHz operating mode
- Increased speed and coverage - up to 15 times the speed of IEEE 802.11g
- Fully backwards compatible with 802.11b/g wireless networks
- Enhances your network security with Wired Equivalent Privacy (WEP), Wi-Fi Protected Access (WPA), and WPA2
- User-friendly configuration
- Orthogonal Frequency Division Multiplexing (OFDM) and advanced MIMO (Multiple-In, Multiple-Out) technology provides high speed connection

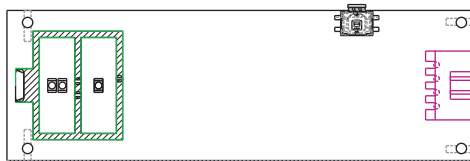
## Applications

The wireless products offer fast, reliable, cost-effective network access for wireless clients in applications such as:

- **Remote access to corporate network information**  
Email, file transfer, and terminal emulation
- **Access to databases for mobile workers**  
Doctors, nurses, retailers, office workers who need access to databases while being mobile in a hospital, retail store, office, campus, etc.
- **SOHO (Small Office Home Office) users**  
SOHO users who need quick and easy installation of a small network

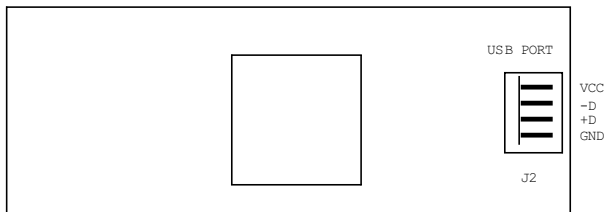
# HARDWARE DESCRIPTION

The WN7522C 1-LF-CN adapter provides 300 Mbps connections. It is fully compliant with the specification of the IEEE 802.11n Draft standard. It can be installed in a DVD player with a 2.0 USB slot.



## How to connect a Wireless USB 2.0 Adapter:

The wireless USB 2.0 adapter provide a general USB port. The Pin functions defined as follows:



Use the shielding wire pin to pin connect to a USB host (Blu-Ray Player).

## How to configure a Wireless USB 2.0 Adapter:

1. Turn on your player and your TV. If a DVD is not in the disc tray, the *Home* menu will be displayed. If a DVD is in the disc tray, press **SETUP** to display the *Home* menu.
2. Press the **B** (green) button, if prompted. Otherwise:
  - a. Press ◀ or ▶ to select *Settings*, and then press **SELECT**.
  - b. Press ◀ or ▶ to select *Network*, and then press **SELECT**.
3. Press ▲ or ▼ to select *Wireless* and then press **SELECT**.
4. Press ▲ or ▼ to select *WiFi Protected Setup (WPS)* and then press **SELECT**.
5. Press the button on your router. When you see *Success* on the screen, your player is connected to your wireless network.
6. Press **SELECT** to close the message.

### Notes:

- You only have to perform this procedure once. The next time you turn on your player, it will connect to the network automatically.
- If you need additional help setting up your network, please refer to the user manual for your router or contact the manufacturer of either your router or your Internet service provider if they provided the router for you.





Model Number: WN7522C 1-LF-CN  
E062010-R01