



# TEST REPORT

Report Reference No..... : **TRE1703009801** R/C.....: 12803  
 FCC ID..... : **YAMPT560HF5**  
 Applicant's name..... : **Hytera Communications Corporation Limited**  
 Address..... : Hytera Tower, Hi-Tech Industrial Park North, 9108#  
 BeihuanRoad,Nanshan District, Shenzhen, 518057China  
 Manufacturer..... : Hytera Communications Corporation Limited  
 Address..... : Hytera Tower, Hi-Tech Industrial Park North, 9108#  
 BeihuanRoad,Nanshan District, Shenzhen, 518057China  
 Test item description ..... : **TETRA TERMINAL**  
 Trade Mark ..... : Hytera  
 Model/Type reference..... : PT560H F5  
 Listed Model(s)..... : -  
 Standard ..... : **FCC 47 CFR Part2.1093**  
**ANSI/IEEE C95.1: 1999**  
**IEEE 1528: 2013**  
 Date of receipt of test sample..... : Mar. 13, 2017  
 Date of testing..... : Mar. 14, 2017 - Apr. 08, 2017  
 Date of issue..... : Apr. 08, 2017  
 Result..... : **PASS**

Compiled by  
 ( position+printedname+signature)...: File administrators:Candy Liu *Candy Liu*  
 Supervised by  
 ( position+printedname+signature)...: Test Engineer: Hans Hu *Sijuan Rao*  
 Approved by  
 ( position+printedname+signature)...: Manager: Hans Hu *Hans Hu*

Testing Laboratory Name ..... : **Shenzhen Huatongwei International Inspection Co., Ltd**  
 Address..... : 1/F, Bldg 3, Hongfa Hi-tech Industrial Park, Genyu Road, Tianliao,  
 Gongming, Shenzhen, China

**Shenzhen Huatongwei International Inspection Co., Ltd. All rights reserved.**

This publication may be reproduced in whole or in part for non-commercial purposes as long as the Shenzhen Huatongwei International Inspection Co., Ltd is acknowledged as copyright owner and source of the material. Shenzhen Huatongwei International Inspection Co., Ltd takes no responsibility for and will not assume liability for damages resulting from the reader's interpretation of the reproduced material due to its placement and context.

## Contents

<u>1.</u>	<u>Test Standards and Report version</u>	<u>3</u>
1.1.	Test Standards	3
1.2.	Report version	3
<u>2.</u>	<u>Summary</u>	<u>4</u>
2.1.	Client Information	4
2.2.	Product Description	4
2.3.	Test frequency list	5
<u>3.</u>	<u>Test Environment</u>	<u>6</u>
3.1.	Address of the test laboratory	6
3.2.	Test Facility	6
3.3.	Environmental conditions	7
<u>4.</u>	<u>Equipments Used during the Test</u>	<u>7</u>
<u>5.</u>	<u>Measurement Uncertainty</u>	<u>8</u>
<u>6.</u>	<u>SAR Measurements System Configuration</u>	<u>9</u>
6.1.	SAR Measurement Set-up	9
6.2.	DASY5 E-field Probe System	10
6.3.	Phantoms	11
6.4.	Device Holder	11
<u>7.</u>	<u>SAR Test Procedure</u>	<u>12</u>
7.1.	Scanning Procedure	12
7.2.	Data Storage and Evaluation	13
<u>8.</u>	<u>Position of the wireless device in relation to the phantom</u>	<u>15</u>
8.1.	Front-of-face	15
8.2.	Body Position	15
<u>9.</u>	<u>SAR System Validation</u>	<u>16</u>
<u>10.</u>	<u>System Verification</u>	<u>17</u>
10.1.	Tissue Dielectric Parameters	17
10.2.	SAR System Verification	19
<u>11.</u>	<u>SAR Exposure Limits</u>	<u>23</u>
<u>12.</u>	<u>Conducted Power Measurement Results</u>	<u>24</u>
<u>13.</u>	<u>Maximum Tune-up Limit</u>	<u>25</u>
<u>14.</u>	<u>SAR Measurement Results</u>	<u>26</u>
<u>15.</u>	<u>TestSetup Photos</u>	<u>36</u>
<u>16.</u>	<u>Photos of the EUT</u>	<u>36</u>

## 1 . Test Standards and Report version

### 1.1. Test Standards

The tests were performed according to following standards:

[IEEE Std C95.1, 1999](#): IEEE Standard for Safety Levels with Respect to Human Exposure to Radio Frequency Electromagnetic Fields, 3 KHz to 300 GHz.

[IEEE Std 1528™-2013](#): IEEE Recommended Practice for Determining the Peak Spatial-Average Specific Absorption Rate (SAR) in the Human Head from Wireless Communications Devices: Measurement Techniques.

[KDB 865664 D01 SAR Measurement 100 MHz to 6 GHz v01r04](#): SAR Measurement Requirements for 100 MHz to 6 GHz

[KDB 865664 D02 RF Exposure Reporting v01r02](#): RF Exposure Compliance Reporting and Documentation Considerations

[KDB 447498 D01](#):General RF Exposure Guidance v05r02: Mobile and Portable Device RF Exposure Procedures and Equipment Authorization Policies

[KDB 643646 D01](#):SAR Test for PTT Radios v01r03 :SAR Test Reduction Considerations for Occupational PTT Radios

### 1.2. Report version

Version No.	Date of issue	Description
00	Apr. 08, 2017	Original

## 2. Summary

### 2.1. Client Information

Applicant:	Hytera Communications Corporation Limited
Address:	Hytera Tower, Hi-Tech Industrial Park North, 9108# Beihuan Road, Nanshan District, Shenzhen, 518057China
Manufacturer:	Hytera Communications Corporation Limited
Address:	Hytera Tower, Hi-Tech Industrial Park North, 9108# Beihuan Road, Nanshan District, Shenzhen, 518057China

### 2.2. Product Description

Name of EUT:	TETRA TERMINAL	
Trade mark:	Hytera	
Model/Type reference:	PT560H F5	
Listed mode(s):	-	
Device Category:	Portable	
RF Exposure Environment:	General Population / Controlled	
Power supply:	7.4V from Internal battery	
<b>Maximum SAR Value</b>		
Separation Distance:	Body:	0mm
	Face:	25mm
Maximum SAR Value (1g):	Body:	<b>2.34W/Kg</b>
	Face:	<b>1.01 W/Kg</b>
<b>TETRA</b>		
Operation Band:	809 MHz - 824 MHz, 854 MHz - 869 MHz.	
Modulation Type:	$\pi/4$ DQPSK	
Working Mode	TMO, DMO	
Channel Separation	25kHz	
Antenna type:	External Antenna	
<b>Bluetooth</b>		
Supported type:	Bluetooth 4.0+EDR	
Modulation:	GFSK, $\pi/4$ QPSK, 8DPSK	
Operation frequency:	2402MHz~2480MHz	
Channel number:	79	
Channel separation:	1MHz	

### 2.3. Test frequency list

When the frequency channels required for SAR testing are not specified in the published RF exposure KDB procedures, the following should be applied to determine the number of required test channels. The test channels should be evenly spread across the transmission frequency band of each wireless mode:

$$N_c = 2 * \text{roundup} [10 * (f_{\text{high}} - f_{\text{low}}) / f_c] + 1$$

$f_c$ : is the centre frequency of the band in hertz;

$f_{\text{high}}$ : is the highest frequency in the band in hertz;

$f_{\text{low}}$ : is the lowest frequency in the band in hertz;

$N_c$ : is the number of channels;

$f$ : is the width of the transmit frequency band in hertz.

Mode	Modulation	Operation Frequency Range	Test Frequency (MHz)	
TMO	$\pi/4$ DQPSK	809MHz-824MHz	CH <sub>L1</sub>	809.05
			CH <sub>M1</sub>	816.50
			CH <sub>H1</sub>	823.95
		854MHz~869MHz	CH <sub>L2</sub>	854.05
			CH <sub>M2</sub>	861.50
			CH <sub>H2</sub>	868.95
DMO	$\pi/4$ DQPSK	809MHz~824MHz	CH <sub>L1</sub>	809.05
			CH <sub>M1</sub>	816.50
			CH <sub>H1</sub>	823.95
		854MHz~869MHz	CH <sub>L2</sub>	854.05
			CH <sub>M2</sub>	861.50
			CH <sub>H2</sub>	868.95

### **3. Test Environment**

#### **3.1. Address of the test laboratory**

Laboratory: Shenzhen Huatongwei International Inspection Co., Ltd.

Address: 1/F, Bldg 3, Hongfa Hi-tech Industrial Park, Genyu Road, Tianliao, Gongming, Shenzhen, China

Phone: 86-755-26748019 Fax: 86-755-26748089

#### **3.2. Test Facility**

The test facility is recognized, certified, or accredited by the following organizations:

Shenzhen Huatongwei International Inspection Co., Ltd. has been assessed and proved to be in compliance with CNAS-CL01 Accreditation Criteria for Testing and Calibration Laboratories (identical to ISO/IEC 17025: 2005 General Requirements) for the Competence of Testing and Calibration Laboratories, Date of Registration: February 28, 2015. Valid time is until February 27, 2018.

##### **A2LA-Lab Cert. No. 3902.01**

Shenzhen Huatongwei International Inspection Co., Ltd. EMC Laboratory has been accredited by A2LA for technical competence in the field of electrical testing, and proved to be in compliance with ISO/IEC 17025: 2005 General Requirements for the Competence of Testing and Calibration Laboratories and any additional program requirements in the identified field of testing. Valid time is until April 30, 2017.

##### **FCC-Registration No.: 317478**

Shenzhen Huatongwei International Inspection Co., Ltd. EMC Laboratory has been registered and fully described in a report filed with the FCC (Federal Communications Commission). The acceptance letter from the FCC is maintained in our files. Registration 317478, Renewal date Jul. 18, 2014, valid time is until Jul. 18, 2017.

##### **IC-Registration No.: 5377B**

Two 3m Alternate Test Site of Shenzhen Huatongwei International Inspection Co., Ltd. has been registered by Certification and Engineering Bureau of Industry Canada for the performance of radiated measurements with Registration No.: 5377B on Dec.03, 2014, valid time is until Dec.03, 2017.

##### **ACA**

Shenzhen Huatongwei International Inspection Co., Ltd. EMC Laboratory can also perform testing for the Australian C-Tick mark as a result of our A2LA accreditation.

### 3.3. Environmental conditions

During the measurement the environmental conditions were within the listed ranges:

Temperature:	18-25 ° C
Humidity:	40-65 %
Atmospheric pressure:	950-1050mbar

### 4. Equipments Used during the Test

Test Equipment	Manufacturer	Type/Model	Serial Number	Calibration	
				Last Calibration	Calibration Interval
Data Acquisition Electronics DAEx	SPEAG	DAE4	1315	2016/07/26	1
E-field Probe	SPEAG	ES3DV3	3292	2016/09/02	1
System Validation Dipole 835V2	SPEAG	D835V2	4d134	2014/07/24	3
Dielectric Probe Kit	Agilent	85070E	US44020288	/	/
Power meter	Agilent	E4417A	GB41292254	2016/10/25	1
Power sensor	Agilent	8481H	MY41095360	2016/10/25	1
Power sensor	Agilent	E9327A	US40441621	2016/10/25	1
Network analyzer	Agilent	8753E	US37390562	2016/10/24	1
Signal Generator	ROHDE & SCHWARZ	SMBV100A	258525	2016/10/22	1
Power Divider	ARRA	A3200-2	N/A	N/A	N/A
Digital Radio Tester	IFR	3920	299001967	2016/11/13	1
TETRA Signal Analyzer	IFR	2310	231001/168	2016/11/13	1
Dual Directional Coupler	Agilent	778D	50783	Note	
Attenuator 1	PE	PE7005-10	N/A	Note	
Attenuator 2	PE	PE7005-10	N/A	Note	
Attenuator 3	PE	PE7005-3	N/A	Note	
Power Amplifier	AR	5S1G4M2	0328798	Note	

Note:

1. The Probe, Dipole and DAE calibration reference to the Appendix A.

### 5. Measurement Uncertainty

No.	Error Description	Type	Uncertainty Value	Probably Distribution	Div.	(Ci) 1g	(Ci) 10g	Std. Unc. (1g)	Std. Unc. (10g)	Degree of freedom
<b>Measurement System</b>										
1	Probe calibration	B	6.0%	N	1	1	1	6.0%	6.0%	∞
2	Axial isotropy	B	4.70%	R	$\sqrt{3}$	0.7	0.7	1.90%	1.90%	∞
3	Hemispherical isotropy	B	9.60%	R	$\sqrt{3}$	0.7	0.7	3.90%	3.90%	∞
4	Boundary Effects	B	1.00%	R	$\sqrt{3}$	1	1	0.60%	0.60%	∞
5	Probe Linearity	B	4.70%	R	$\sqrt{3}$	1	1	2.70%	2.70%	∞
6	Detection limit	B	1.00%	R	$\sqrt{3}$	1	1	0.60%	0.60%	∞
7	RF ambient conditions-noise	B	0.00%	R	$\sqrt{3}$	1	1	0.00%	0.00%	∞
8	RF ambient conditions-reflection	B	0.00%	R	$\sqrt{3}$	1	1	0.00%	0.00%	∞
9	Response time	B	0.80%	R	$\sqrt{3}$	1	1	0.50%	0.50%	∞
10	Integration time	B	5.00%	R	$\sqrt{3}$	1	1	2.90%	2.90%	∞
11	RF ambient	B	3.00%	R	$\sqrt{3}$	1	1	1.70%	1.70%	∞
12	Probe positioned mech. restrictions	B	0.40%	R	$\sqrt{3}$	1	1	0.20%	0.20%	∞
13	Probe positioning with respect to phantom shell	B	2.90%	R	$\sqrt{3}$	1	1	1.70%	1.70%	∞
14	Max.SAR evaluation	B	3.90%	R	$\sqrt{3}$	1	1	2.30%	2.30%	∞
<b>Test Sample Related</b>										
15	Test sample positioning	A	1.86%	N	1	1	1	1.86%	1.86%	∞
16	Device holder uncertainty	A	1.70%	N	1	1	1	1.70%	1.70%	∞
17	Drift of output power	B	5.00%	R	$\sqrt{3}$	1	1	2.90%	2.90%	∞
<b>Phantom and Set-up</b>										
18	Phantom uncertainty	B	4.00%	R	$\sqrt{3}$	1	1	2.30%	2.30%	∞
19	Liquid conductivity (target)	B	5.00%	R	$\sqrt{3}$	0.64	0.43	1.80%	1.20%	∞
20	Liquid conductivity (meas.)	A	0.50%	N	1	0.64	0.43	0.32%	0.26%	∞
21	Liquid permittivity (target)	B	5.00%	R	$\sqrt{3}$	0.64	0.43	1.80%	1.20%	∞
22	Liquid permittivity (meas.)	A	0.16%	N	1	0.64	0.43	0.10%	0.07%	∞
Combined standard uncertainty		$u_c = \sqrt{\sum_{i=1}^{22} c_i^2 u_i^2}$		/	/	/	/	9.79%	9.67%	∞
Expanded uncertainty (confidence interval of 95 %)		$u_e = 2u_c$		R	K=2	/	/	19.57%	19.34%	∞



## 6. SAR Measurements System Configuration

### 6.1. SAR Measurement Set-up

The DASY5 system for performing compliance tests consists of the following items:

A standard high precision 6-axis robot (Stäubli RX family) with controller and software. An arm extension for accommodating the data acquisition electronics (DAE).

A dosimetric probe, i.e. an isotropic E-field probe optimized and calibrated for usage in tissue simulating liquid. The probe is equipped with an optical surface detector system.

A data acquisition electronic (DAE) which performs the signal amplification, signal multiplexing, AD-conversion, offset measurements, mechanical surface detection, collision detection, etc. The unit is battery powered with standard or rechargeable batteries. The signal is optically transmitted to the EOC.

A unit to operate the optical surface detector which is connected to the EOC.

The Electro-Optical Coupler (EOC) performs the conversion from the optical into a digital electric signal of the DAE. The EOC is connected to the DASY5 measurement server.

The DASY5 measurement server, which performs all real-time data evaluation for field measurements and surface detection, controls robot movements and handles safety operation. A computer operating Windows 2003.

DASY5 software and SEMCAD data evaluation software.

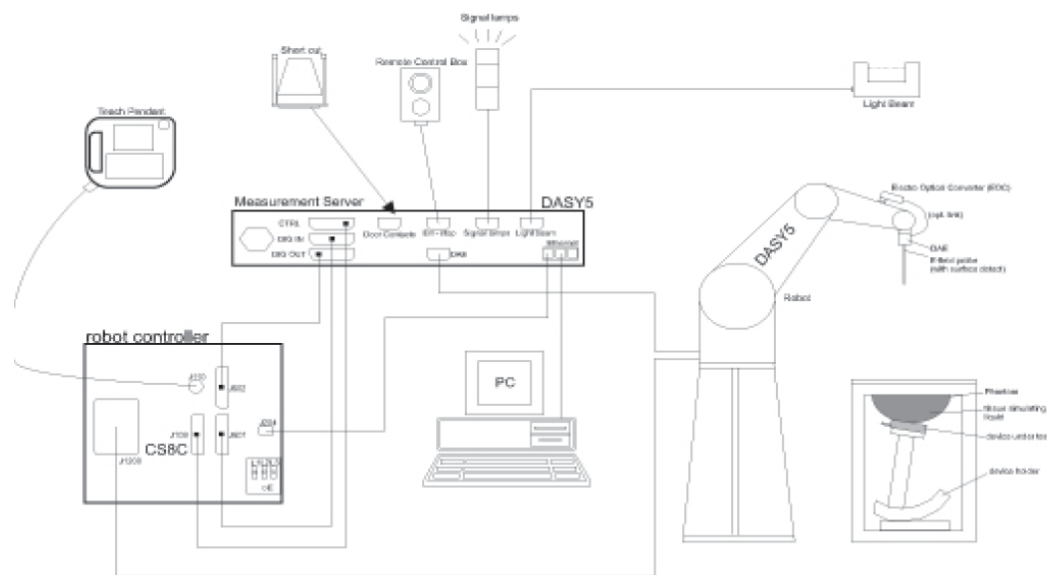
Remote control with teach panel and additional circuitry for robot safety such as warning lamps, etc.

The generic twin phantom enabling the testing of left-hand and right-hand usage.

The device holder for handheld Mobile Phones.

Tissue simulating liquid mixed according to the given recipes.

System validation dipoles allowing to validate the proper functioning of the system.



## 6.2. DASY5 E-field Probe System

The SAR measurements were conducted with the dosimetric probe ES3DV3 (manufactured by SPEAG), designed in the classical triangular configuration and optimized for dosimetric evaluation.

### ● Probe Specification

Construction Symmetrical design with triangular core  
 Interleaved sensors  
 Built-in shielding against static charges  
 PEEK enclosure material (resistant to organic solvents, e.g., DGBE)

Calibration ISO/IEC 17025 calibration service available.

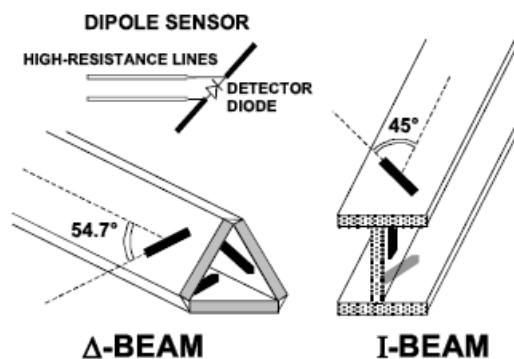
Frequency	10 MHz to 4 GHz; Linearity: $\pm 0.2$ dB (30 MHz to 4 GHz)
Directivity	$\pm 0.2$ dB in HSL (rotation around probe axis) $\pm 0.3$ dB in tissue material (rotation normal to probe axis)
Dynamic Range	5 $\mu$ W/g to > 100 mW/g; Linearity: $\pm 0.2$ dB
Dimensions	Overall length: 337 mm (Tip: 20 mm) Tip diameter: 3.9 mm (Body: 12 mm) Distance from probe tip to dipole centers: 2.0 mm
Application	General dosimetry up to 4 GHz Dosimetry in strong gradient fields Compliance tests of Mobile Phones
Compatibility	DASY3, DASY4, DASY52 SAR and higher, EASY4/MRI



### ● Isotropic E-Field Probe

The isotropic E-Field probe has been fully calibrated and assessed for isotropicity, and boundary effect within a controlled environment. Depending on the frequency for which the probe is calibrated the method utilized for calibration will change.

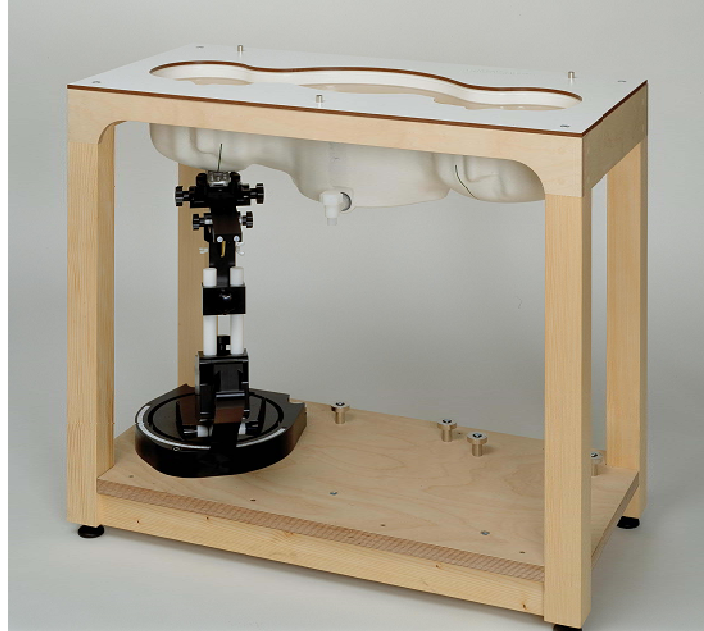
The E-Field probe utilizes a triangular sensor arrangement as detailed in the diagram below:



### 6.3. Phantoms

The phantom used for all tests i.e. for both system checks and device testing, was the twin-headed "SAM Phantom", manufactured by SPEAG. The SAM twin phantom is a fiberglass shell phantom with 2mm shell thickness (except the ear region, where shell thickness increases to 6mm).

System checking was performed using the flat section, whilst Head SAR tests used the left and right head profile sections. Body SAR testing also used the flat section between the head profiles.



SAM Twin Phantom

### 6.4. Device Holder

The device was placed in the device holder (illustrated below) that is supplied by SPEAG as an integral part of the DASY system.

The DASY device holder is designed to cope with the different positions given in the standard. It has two scales for device rotation (with respect to the body axis) and device inclination (with respect to the line between the ear reference points). The rotation centers for both scales is the ear reference point (ERP). Thus the device needs no repositioning when changing the angles.



Device holder supplied by SPEAG

## 7. SAR Test Procedure

### 7.1. Scanning Procedure

The DASY5 installation includes predefined files with recommended procedures for measurements and validation. They are read-only document files and destined as fully defined but unmeasured masks. All test positions (head or body-worn) are tested with the same configuration of test steps differing only in the grid definition for the different test positions.

The “reference” and “drift” measurements are located at the beginning and end of the batch process. They measure the field drift at one single point in the liquid over the complete procedure. The indicated drift is mainly the variation of the DUT’s output power and should vary max.  $\pm 5\%$ .

The “surface check” measurement tests the optical surface detection system of the DASY5 system by repeatedly detecting the surface with the optical and mechanical surface detector and comparing the results. The output gives the detecting heights of both systems, the difference between the two systems and the standard deviation of the detection repeatability. Air bubbles or refraction in the liquid due to separation of the sugar-water mixture gives poor repeatability (above  $\pm 0.1\text{mm}$ ). To prevent wrong results tests are only executed when the liquid is free of air bubbles. The difference between the optical surface detection and the actual surface depends on the probe and is specified with each probe (It does not depend on the surface reflectivity or the probe angle to the surface within  $\pm 30^\circ$ .)

#### **Area Scan**

The Area Scan is used as a fast scan in two dimensions to find the area of high field values before running a detailed measurement around the hot spot. Before starting the area scan a grid spacing of 15 mm x 15 mm is set. During the scan the distance of the probe to the phantom remains unchanged. After finishing area scan, the field maxima within a range of 2 dB will be ascertained.

#### **Zoom Scan**

Zoom Scans are used to estimate the peak spatial SAR values within a cubic averaging volume containing 1 g and 10 g of simulated tissue. The default Zoom Scan is done by 7x7x5 points within a cube whose base is centered around the maxima found in the preceding area scan.

#### **Spatial Peak Detection**

The procedure for spatial peak SAR evaluation has been implemented and can determine values of masses of 1g and 10g, as well as for user-specific masses. The DASY5 system allows evaluations that combine measured data and robot positions, such as: • maximum search • extrapolation • boundary correction • peak search for averaged SAR. During a maximum search, global and local maxima searches are automatically performed in 2-D after each Area Scan measurement with at least 6 measurement points. It is based on the evaluation of the local SAR gradient calculated by the Quadratic Shepard’s method. The algorithm will find the global maximum and all local maxima within -2 dB of the global maxima for all SAR distributions.

Extrapolation routines are used to obtain SAR values between the lowest measurement points and the inner phantom surface. The extrapolation distance is determined by the surface detection distance and the probe sensor offset. Several measurements at different distances are necessary for the extrapolation. Extrapolation routines require at least 10 measurement points in 3-D space. They are used in the Zoom Scan to obtain SAR values between the lowest measurement points and the inner phantom surface. The routine uses the modified Quadratic Shepard’s method for extrapolation. For a grid using 7x7x5 measurement points with 5mm resolution amounting to 343 measurement points, the uncertainty of the extrapolation routines is less than 1% for 1g and 10g cubes.

A Z-axis scan measures the total SAR value at the x-and y-position of the maximum SAR value found during the cube 7x7x5 scan. The probe is moved away in z-direction from the bottom of the SAM phantom in 5mm steps.

## 7.2. Data Storage and Evaluation

### Data Storage

The DASY5 software stores the acquired data from the data acquisition electronics as raw data (in microvolt readings from the probe sensors), together with all necessary software parameters for the data evaluation (probe calibration data, liquid parameters and device frequency and modulation data) in measurement files with the extension ".DA4". The software evaluates the desired unit and format for output each time the data is visualized or exported. This allows verification of the complete software setup even after the measurement and allows correction of incorrect parameter settings. For example, if a measurement has been performed with a wrong crest factor parameter in the device setup, the parameter can be corrected afterwards and the data can be re-evaluated.

The measured data can be visualized or exported in different units or formats, depending on the selected probe type ([V/m], [A/m], [°C], [mW/g], [mW/cm<sup>2</sup>], [dBrel], etc.). Some of these units are not available in certain situations or show meaningless results, e.g., a SAR output in a lossless media will always be zero. Raw data can also be exported to perform the evaluation with other software packages.

### Data Evaluation

The SEMCAD software automatically executes the following procedures to calculate the field units from the microvolt readings at the probe connector. The parameters used in the evaluation are stored in the configuration modules of the software:

Probe parameters:	Sensitivity:	Normi, ai0, ai1, ai2
	Conversion factor:	ConvFi
	Diode compression point:	Dcpi
Device parameters:	Frequency:	f
	Crest factor:	cf
Media parameters:	Conductivity:	σ
	Density:	ρ

These parameters must be set correctly in the software. They can be found in the component documents or they can be imported into the software from the configuration files issued for the DASY5 components. In the direct measuring mode of the multimeter option, the parameters of the actual system setup are used. In the scan visualization and export modes, the parameters stored in the corresponding document files are used.

The first step of the evaluation is a linearization of the filtered input signal to account for the compression characteristics of the detector diode. The compensation depends on the input signal, the diode type and the DC-transmission factor from the diode to the evaluation electronics. If the exciting field is pulsed, the crest factor of the signal must be known to correctly compensate for peak power. The formula for each channel can be given as:

$$V_i = U_i + U_i^2 \cdot \frac{cf}{dcp_i}$$

Vi:	compensated signal of channel ( i = x, y, z )
Ui:	input signal of channel ( i = x, y, z )
cf:	crest factor of exciting field (DASY parameter)
dcp <sub>i</sub> :	diode compression point (DASY parameter)

From the compensated input signals the primary field data for each channel can be evaluated:

$$\mathbf{E} - \text{fieldprobes : } E_i = \sqrt{\frac{V_i}{Norm_i \cdot ConvF}}$$

$$\mathbf{H} - \text{fieldprobes : } H_i = \sqrt{V_i} \cdot \frac{a_{i0} + a_{i1}f + a_{i2}f^2}{f}$$

Vi:	compensated signal of channel ( i = x, y, z )
Norm <sub>i</sub> :	sensor sensitivity of channel ( i = x, y, z ), [mV/(V/m) <sup>2</sup> ] for E-field Probes
ConvF:	sensitivity enhancement in solution
a <sub>ij</sub> :	sensor sensitivity factors for H-field probes
f:	carrier frequency [GHz]
E <sub>i</sub> :	electric field strength of channel i in V/m
H <sub>i</sub> :	magnetic field strength of channel i in A/m

The RSS value of the field components gives the total field strength (Hermitian magnitude):

$$E_{tot} = \sqrt{E_x^2 + E_y^2 + E_z^2}$$

The primary field data are used to calculate the derived field units.

$$SAR = E_{tot}^2 \cdot \frac{\sigma}{\rho \cdot 1'000}$$

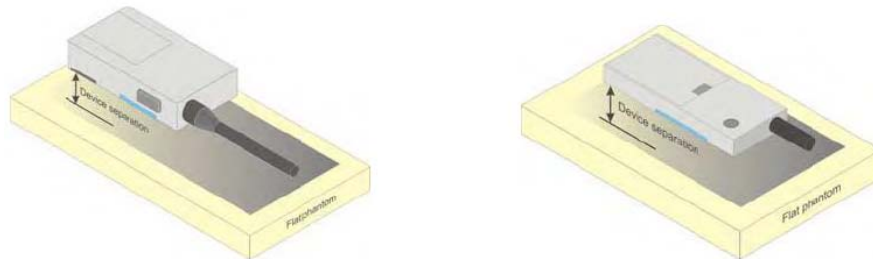
SAR: local specific absorption rate in mW/g  
Etot: total field strength in V/m  
 $\sigma$ : conductivity in [mho/m] or [Siemens/m]  
 $\rho$ : equivalent tissue density in g/cm<sup>3</sup>

Note that the density is normally set to 1 (or 1.06), to account for actual brain density rather than the density of the simulation liquid.

## 8. Position of the wireless device in relation to the phantom

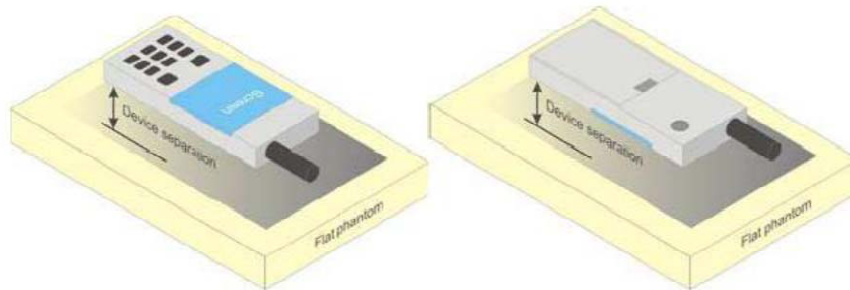
### 8.1. Front-of-face

A typical example of a front-of-face device is a two-way radio that is held at a distance from the face of the user when transmitting. In these cases the device under test shall be positioned at the distance to the phantom surface that corresponds to the intended use as specified by the manufacturer in the user instructions. If the intended use is not specified, a separation distance of 25 mm between the phantom surface and the device shall be used.



### 8.2. Body Position

A typical example of a body-worn device is a mobile phone, wireless enabled PDA or other battery operated wireless device with the ability to transmit while mounted on a person's body using a carry accessory approved by the wireless device manufacturer.



## 9. SAR System Validation

Per FCC KDB 865664 D02, SAR system validation status should be documented to confirm measurement accuracy. The SAR systems (including SAR probes, system components and software versions) used for this device were validated against its performance specifications prior to the SAR measurements. Reference dipoles were used with the required tissue-equivalent media for system validation, according to the procedures outlined in FCC KDB 865664 D01 and IEEE 1528-2013. Since SAR probe calibrations are frequency dependent, each probe calibration point, using the system that normally operates with the probe for routine SAR measurements and according to the required tissue-equivalent media.

A tabulated summary of the system validation status including the validation date(s), measurement frequencies, SAR probes and tissue dielectric parameters has been included.

**SAR System Validation Summary**

Probe	Probe type	Probe Calibration Point		Dielectric Parameters		CW Validation			Modulation Validation		
				Conductivity	Permittivity	Sensitivity	Probe linearity	Probe Isotropy	Modulation type	Duty factor	PAR
3292	ES3DV3	835	Head	0.90	41.50	PASS	PASS	PASS	TMO/DMO	PASS	N/A
3292	ES3DV3	835	Body	0.97	55.20	PASS	PASS	PASS	TMO/DMO	PASS	N/A

**NOTE:**

While the probes have been calibrated for both CW and modulated signals, all measurements were performed using communication systems calibrated for CW signals only. Modulations in the table above represent test configurations for which the measurement system has been validated per FCC KDB Publication 865664 D01 for scenarios when CW probe calibrations are used with other signal types.



## 10. System Verification

### 10.1. Tissue Dielectric Parameters

The liquid used for the frequency consisted of water, sugar, salt and Cellulose. The liquid has been previously proven to be suited for worst-case. The Table 1 and 2 shows the detail solution. It's satisfying the latest tissue dielectric parameters requirements proposed by the KDB865664 D01.

Table 1. Composition of the Tissue Equivalent Matter

Tissue dielectric parameters for head and body phantoms				
Target Frequency	Head		Body	
(MHz)	$\epsilon_r$	$\sigma$ (s/m)	$\epsilon_r$	$\sigma$ (s/m)
150	52.3	0.76	61.9	0.80
300	45.3	0.87	58.2	0.92
450	43.5	0.87	56.7	0.94
835	41.5	0.90	55.2	0.97
900	41.5	0.97	55.0	1.05
915	41.5	0.98	55.0	1.06
1450	40.5	1.20	54.0	1.30
1610	40.3	1.29	53.8	1.40
1800-2000	40.0	1.40	53.3	1.52
2450	39.2	1.80	52.7	1.95
3000	38.5	2.40	52.0	2.73
5800	35.3	5.27	48.2	6.00

Table 2. Targets for tissue simulating liquid

Frequency (MHz)	Head Tissue		Body Tissue	
	$\epsilon_r$	$\sigma$ (S/m)	$\epsilon_r$	$\sigma$ (S/m)
150	52.3	0.76	61.9	0.80
300	45.3	0.87	58.2	0.92
450	43.5	0.87	56.7	0.94
<b>835</b>	<b>41.5</b>	<b>0.90</b>	<b>55.2</b>	<b>0.97</b>
900	41.5	0.97	55.0	1.05
915	41.5	0.98	55.0	1.06
1450	40.5	1.20	54.0	1.30
1610	40.3	1.29	53.8	1.40
1800-2000	40.0	1.40	53.3	1.52
2450	39.2	1.80	52.7	1.95
3000	38.5	2.40	52.0	2.73
5800	35.3	5.27	48.2	6.00

**CheckResult:**

Dielectric performance of Head tissue simulating liquid				
Frequency (MHz)	Description	DielectricParameters		Temp
		$\epsilon_r$	$\sigma$ (s/m)	°C
835	Recommended result ±5% window	41.50 39.43 to 43.58	0.90 0.86 to 0.95	/
	Measurement value 2017-03-30	41.62	0.92	21

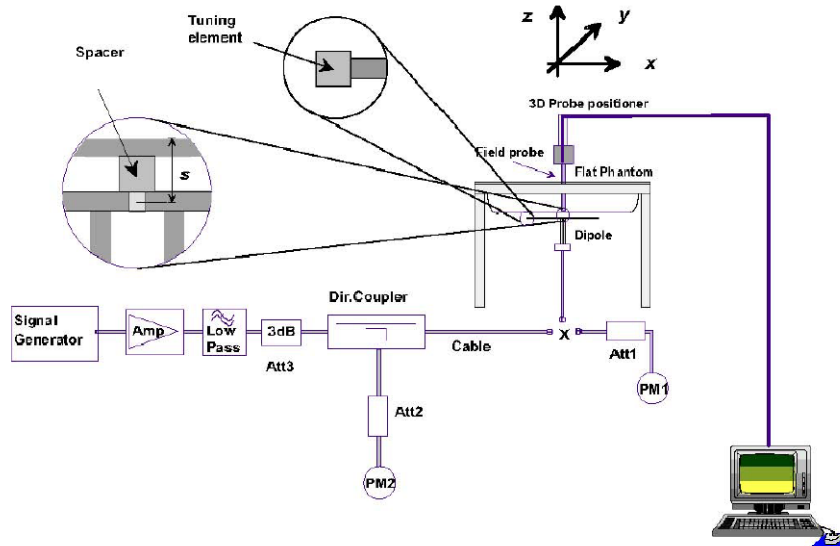
Dielectric performance of Body tissue simulating liquid				
Frequency (MHz)	Description	DielectricParameters		Temp
		$\epsilon_r$	$\sigma$ (s/m)	°C
835	Recommended result ±5% window	55.2 52.44 to 57.96	0.97 0.92 to 1.02	/
	Measurement value 2017-03-31	55.15	0.96	21

### 10.2. SAR System Verification

The purpose of the system check is to verify that the system operates within its specifications at the device test frequency. The system check is simple check of repeatability to make sure that the system works correctly at the time of the compliance test;

System check results have to be equal or near the values determined during dipole calibration with the relevant liquids and test system ( $\pm 10\%$ ).

System check is performed regularly on all frequency bands where tests are performed with the DASY5 system.



The output power on dipole port must be calibrated to 24 dBm (250mW) before dipole is connected.



Photo of Dipole Setup

**Check Result:**

System Validation Result for Head				
Frequency (MHz)	Description	SAR(W/kg)		Temp
		1g	10g	°C
835	Recommended result ±10% window	2.41 2.29 - 2.53	1.57 1.49 - 1.65	/
	Measurement value 2017-03-30	2.34	1.52	21

System Validation Result for Body				
Frequency (MHz)	Description	SAR(W/kg)		Temp
		1g	10g	°C
835	Recommended result ±10% window	2.47 2.35 - 2.59	1.64 1.55 - 1.71	/
	Measurement value 2017-03-31	2.47	1.59	21

*Note:*

1. *the graph results see follow.*
2. Recommended Values used derive from the calibration certificate and 250 mW is used asfeeding power to the calibrated dipole.

**System Performance Check at 835 MHz Head**

DUT: Dipole 835 MHz; Type: D835V2; Serial: 4d134

Date:2017-03-30

Communication System: CW; Frequency: 835 MHz;Duty Cycle: 1:1

Medium parameters used (interpolated):  $f = 835$  MHz;  $\sigma = 0.92$  S/m;  $\epsilon_r = 41.62$ ;  $\rho = 1000$  kg/m<sup>3</sup>

Phantom section: Flat Section

**DASY5 Configuration:**

- Probe: ES3DV3 - SN3292; ConvF(6.53, 6.53, 6.53); Calibrated: 02/09/2016;
- Sensor-Surface: 4mm (Mechanical Surface Detection)
- Electronics: DAE4 Sn1315; Calibrated: 26/07/2016
- Phantom: SAM 1; Type: SAM;
- Measurement SW: DASY52, Version 52.8 (2); SEMCAD X Version 14.6.6 (6824)

**Area Scan (61x91x1):**Measurement grid: dx=15.00 mm, dy=15.00 mm

Maximum value of SAR (interpolated) = 2.834 mW/g

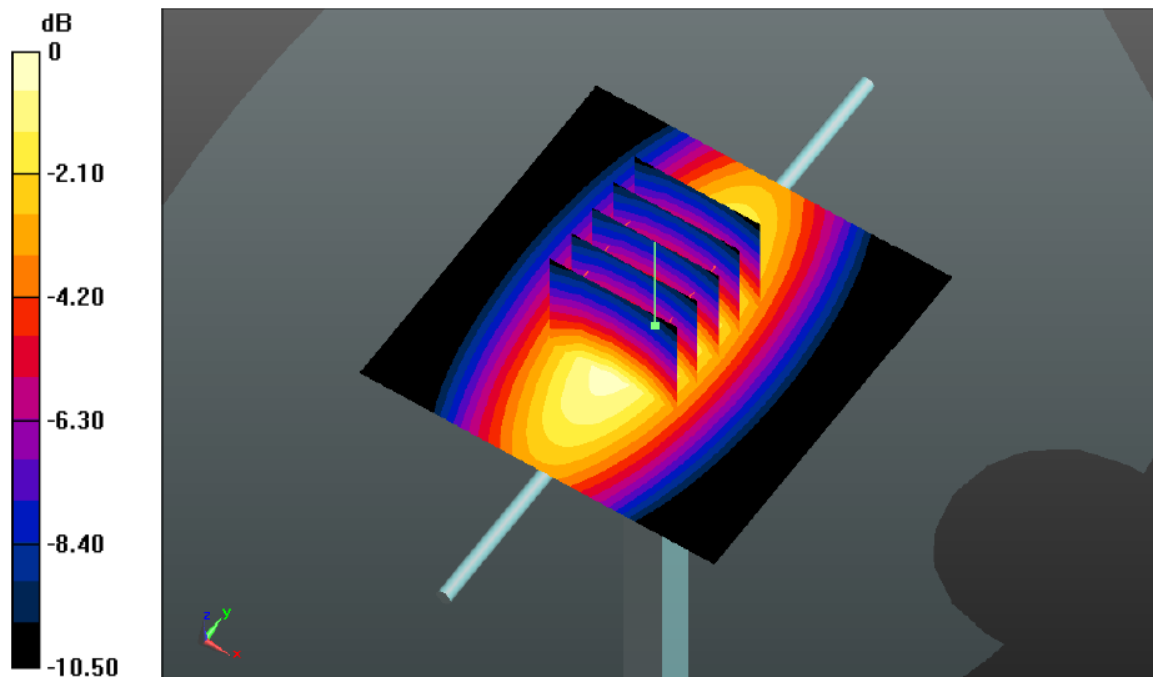
**Zoom Scan (5x5x7)/Cube 0:** Measurement grid: dx=7mm, dy=7mm, dz=5mm

Reference Value = 49.865 V/m; Power Drift = -0.01 dB

Peak SAR (extrapolated) = 3.286 W/kg

**SAR(1 g) = 2.34 mW/g; SAR(10 g) = 1.52mW/g**

Maximum value of SAR (measured) = 2.825 mW/g



System Performance Check 835MHz Head 250mW

**System Performance Check at 835 MHz Body**

DUT: Dipole 835 MHz; Type: D835V2; Serial: 4d134

Date:2017-03-31

Communication System: CW; Frequency: 835 MHz;Duty Cycle: 1:1

Medium parameters used (interpolated):  $f = 835$  MHz;  $\sigma = 0.96$  S/m;  $\epsilon_r = 55.15$ ;  $\rho = 1000$  kg/m<sup>3</sup>

Phantom section: Flat Section

**DASY5 Configuration:**

- Probe: ES3DV3 - SN3292; ConvF(6.27, 6.27, 6.27); Calibrated: 02/09/2016;
- Sensor-Surface: 4mm (Mechanical Surface Detection)
- Electronics: DAE4 Sn1315; Calibrated: 26/07/2016
- Phantom: SAM 1; Type: SAM;
- Measurement SW: DASY52, Version 52.8 (2); SEMCAD X Version 14.6.6 (6824)

**Area Scan (61x91x1):**Measurement grid: dx=15.00 mm, dy=15.00 mm

Maximum value of SAR (interpolated) = 2.888 mW/g

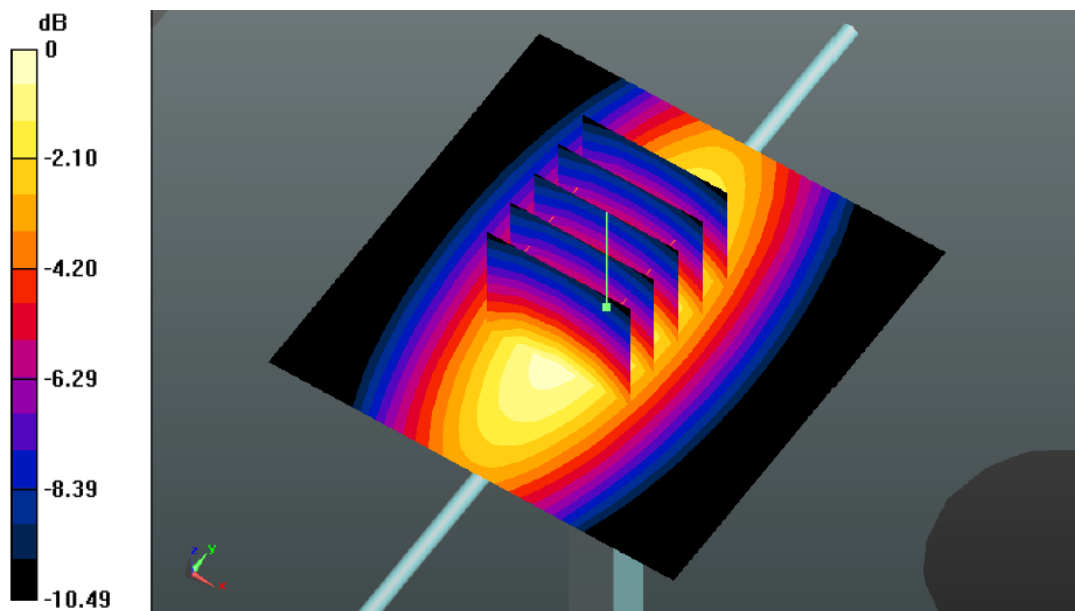
**Zoom Scan (5x5x7)/Cube 0:** Measurement grid: dx=8mm, dy=8mm, dz=5mm

Reference Value = 50.236 V/m; Power Drift = -0.02 dB

Peak SAR (extrapolated) = 3.339 W/kg

**SAR(1 g) = 2.47 mW/g; SAR(10 g) = 1.59 mW/g**

Maximum value of SAR (measured) = 2.871 mW/g



System Performance Check 835MHz Body 250mW

## 11. SAR Exposure Limits

Type Exposure	Limit (W/kg)	
	General Population / Uncontrolled Exposure Environment	Occupational / Controlled Exposure Environment
Spatial Average SAR (whole body)	0.08	0.4
Spatial Peak SAR (1g cube tissue for head and trunk)	1.60	8.0
Spatial Peak SAR (10g for limb)	4.0	20.0

Population/Uncontrolled Environments: are defined as locations where there is the exposure of individual who have no knowledge or control of their exposure.

Occupational/Controlled Environments: are defined as locations where there is exposure that may be incurred by people who are aware of the potential for exposure (i.e. as a result of employment or occupation).

## 12. Conducted Power Measurement Results

TETRA					
Mode	Modulation	Operation Frequency Range	Channel	Frequency (MHz)	Conducted power (dBm)
TMO	$\pi/4$ DQPSK	809MHz-824MHz	CH <sub>L1</sub>	809.05	34.50
			CH <sub>M1</sub>	816.50	34.50
			CH <sub>H1</sub>	823.95	34.50
		854MHz~869MHz	CH <sub>L2</sub>	854.05	34.50
			CH <sub>M2</sub>	861.50	34.40
			CH <sub>H2</sub>	868.95	34.40
DMO	$\pi/4$ DQPSK	809MHz-824MHz	CH <sub>L1</sub>	809.05	34.30
			CH <sub>M1</sub>	816.50	34.40
			CH <sub>H1</sub>	823.95	34.40
		854MHz~869MHz	CH <sub>L2</sub>	854.05	34.00
			CH <sub>M2</sub>	861.50	34.40
			CH <sub>H2</sub>	868.95	34.30

Bluetooth			
Mode	Channel	Frequency (MHz)	Conducted power (dBm)
GFSK	0	2402	0.89
	39	2441	4.88
	78	2480	5.31
$\pi/4$ QPSK	0	2402	2.30
	39	2441	3.43
	78	2480	4.10
8DPSK	0	2402	2.45
	39	2441	3.79
	78	2480	4.37

Per KDB 447498 D01, the 1-g and 10-g SAR test exclusion thresholds for 100MHz to 6GHz at test separation distances  $\leq 50$ mm are determined by:

$$[(\text{max. Power of channel, including tune-up tolerance, mW}) / (\text{min. test separation distance, mm})] * [\sqrt{f(\text{GHz})}] \leq 15.0 \text{ for 1-g SAR}$$

Band/Mode	F(GHz)	Position	SAR test exclusion threshold (mW)	RF output power		SAR test exclusion
				dBm	mW	
Bluetooth	2.45	Head	48	6	3.98	Yes
		Body	96	6	3.98	Yes

Per KDB 447498 D01, when the minimum test separation distance is  $< 5$ mm, a distance of 5mm is applied to determine SAR test exclusion.



### 13. Maximum Tune-up Limit

This device operates using the following maximum output power specifications. SAR values were scaled to the maximum allowed power to determine compliance per KDB publication 447498 D01

TETRA			
Mode	Modulation	Operation Frequency Range	Tune up power
TMO/ DMO	$\pi/4$ DQPSK	809MHz-824MHz	35.0 dBm
	$\pi/4$ DQPSK	854MHz~869MHz	35.0 dBm

Bluetooth			
Mode	Channel	Frequency (MHz)	Conducted power (dBm)
GFSK	0	2402	1.00
	39	2441	5.00
	78	2480	6.00
$\pi/4$ QPSK	0	2402	3.00
	39	2441	4.00
	78	2480	5.00
8DPSK	0	2402	3.00
	39	2441	4.00
	78	2480	5.00

## 14. SAR Measurement Results

Front of Face										
Frequency range (MHz)	Frequency		Conducted Power (dBm)	Tune-up limit	Power Drift(dB)	Tune-up Scaling factor	Measured SAR(1g) (W/kg)	Report SAR(1g) (W/kg)	SAR 50% duty (W/kg)	Test Plot
	CH	MHz								
<b>TMO mode</b>										
809~824	CH <sub>L1</sub>	809.05	34.50	35.00	-0.12	1.12	1.48	1.66	0.83	-
	CH <sub>M1</sub>	816.50	34.50	35.00	-0.14	1.12	1.60	1.80	0.90	TF1
	CH <sub>H1</sub>	823.95	34.50	35.00	-0.09	1.12	1.43	1.60	0.80	-
854~869	CH <sub>L2</sub>	854.05	34.50	35.00	-0.10	1.12	1.59	1.78	0.89	-
	CH <sub>M2</sub>	861.50	34.40	35.00	-0.12	1.15	1.72	1.97	0.99	TF2
	CH <sub>H2</sub>	868.95	34.40	35.00	-0.08	1.15	1.54	1.77	0.89	-
<b>DMO mode</b>										
809~824	CH <sub>L1</sub>	809.05	34.30	35.00	-0.12	1.17	1.55	1.82	0.91	-
	CH <sub>M1</sub>	816.50	34.40	35.00	-0.15	1.15	1.68	1.93	0.97	DF1
	CH <sub>H1</sub>	823.95	34.40	35.00	-0.10	1.15	1.50	1.72	0.86	-
854~869	CH <sub>L2</sub>	854.05	34.00	35.00	-0.13	1.26	1.58	1.99	1.00	-
	CH <sub>M2</sub>	861.50	34.40	35.00	-0.16	1.15	1.76	2.02	1.01	DF2
	CH <sub>H2</sub>	868.95	34.30	35.00	-0.11	1.17	1.57	1.84	0.92	-

Note:

1. The value with blue color is the maximum SAR Value of each test band.
2. Batteries are fully charged at the beginning of the SAR measurements
3. The EUT was tested for face-held SAR with a 2.5cm separation distance between the front of the EUT and the outer surface of the planer phantom
4. When the SAR for all antennas tested using the default battery is  $\leq 3.5$  W/kg (50% PTT duty factor), testing of all other required channels is not necessary.
5. When the SAR of an antenna tested on the highest output power using the default battery is  $> 3.5$  W/Kg and  $\leq 4.0$  W/Kg (50% PTT duty factor), testing of the immediately adjacent channel(s) is not necessary, but testing of other required channels may still be required.
6. When the SAR for all antennas tested using the default battery  $\leq 4.0$  W/kg(50% PTT duty factor), test additional batteries using the antenna and channel configuration that resulted in the highest SAR.

Body-worn										
Frequency range (MHz)	Frequency		Conducted Power (dBm)	Tune-up limit	Power Drift(dB)	Tune-up Scaling factor	Measured SAR(1g) (W/kg)	Report SAR(1g) (W/kg)	SAR 50% duty (W/kg)	Test Plot
	CH	MHz								
<b>TMO mode</b>										
809~824	CH <sub>L1</sub>	809.05	34.50	35.00	-0.10	1.12	3.43	3.85	1.93	-
	CH <sub>M1</sub>	816.50	34.50	35.00	-0.12	1.12	3.72	4.17	2.09	TB1
	CH <sub>H1</sub>	823.95	34.50	35.00	-0.08	1.12	3.32	3.73	1.87	-
854~869	CH <sub>L2</sub>	854.05	34.50	35.00	-0.09	1.12	3.71	4.16	2.08	-
	CH <sub>M2</sub>	861.50	34.40	35.00	-0.11	1.15	4.02	4.62	2.31	TB2
	CH <sub>H2</sub>	868.95	34.40	35.00	-0.07	1.15	3.59	4.12	2.06	-
<b>DMO mode</b>										
809~824	CH <sub>L1</sub>	809.05	34.30	35.00	-0.08	1.17	3.55	4.17	2.09	-
	CH <sub>M1</sub>	816.50	34.40	35.00	-0.10	1.15	3.85	4.42	2.21	DB1
	CH <sub>H1</sub>	823.95	34.40	35.00	-0.07	1.15	3.44	3.95	1.98	-
854~869	CH <sub>L2</sub>	854.05	34.00	35.00	-0.11	1.26	3.77	4.75	2.38	-
	CH <sub>M2</sub>	861.50	34.40	35.00	-0.12	1.15	4.08	4.68	2.34	DB2
	CH <sub>H2</sub>	868.95	34.30	35.00	-0.03	1.17	3.65	4.29	2.15	-

Note:

1. The value with blue color is the maximum SAR Value of each test band.
2. Batteries are fully charged at the beginning of the SAR measurements
3. The Body-worn SAR evaluation was performed with the Leather Case body-worn accessory attached to the DUT and touching the outer surface of the planar phantom
4. When the SAR for all antennas tested using the default battery is  $\leq 3.5$  W/kg (50% PTT duty factor), testing of all other required channels is not necessary.
5. When the SAR of an antenna tested on the highest output power using the default battery is  $> 3.5$  W/Kg and  $\leq 4.0$  W/Kg (50% PTT duty factor), testing of the immediately adjacent channel(s) is not necessary, but testing of other required channels may still be required.
6. When the SAR for all antennas tested using the default battery  $\leq 4.0$  W/kg(50% PTT duty factor), test additional batteries using the antenna and channel configuration that resulted in the highest SAR.

SAR Test Data Plots

Test Plot:	TF1	Test Position:	Front of Face
------------	-----	----------------	---------------

Date:2017-03-30

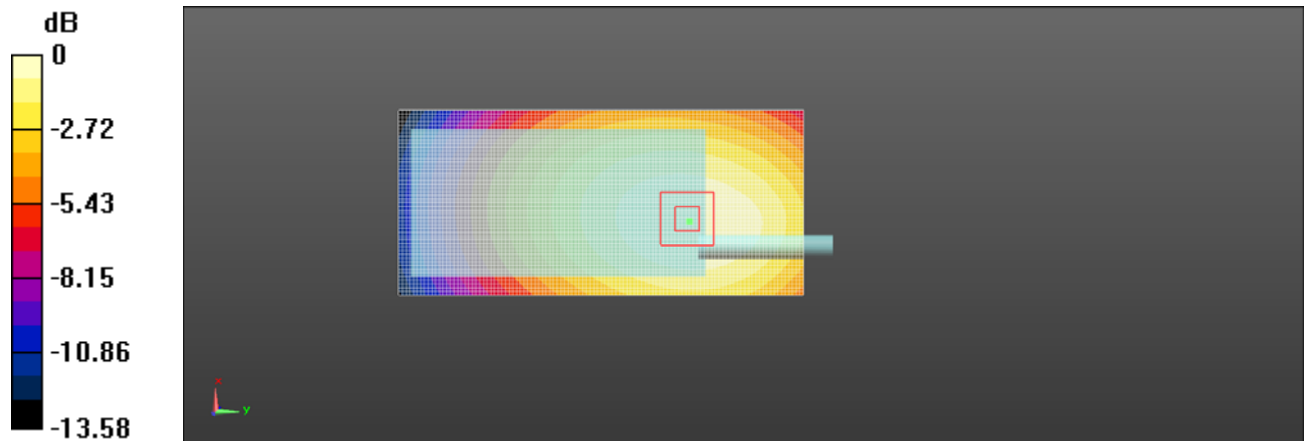
Communication System: Customer System; Frequency:838.05 MHz;  
Medium parameters used (interpolated):  $f=838.05$  MHz;  $\sigma=0.91$ S/m;  $\epsilon_r=41.48$ ;  $\rho=1000$  kg/m<sup>3</sup>  
Phantom section : Flat Section

**DASY5 Configuration:**

- Probe: ES3DV3 - SN3292; ConvF(6.53, 6.53, 6.53); Calibrated: 02/09/2016;
- Sensor-Surface: 4mm (Mechanical Surface Detection)
- Electronics: DAE4 Sn1315; Calibrated: 26/07/2016
- Phantom: ELI v4.0; Type: QDOVA001BB
- Measurement SW: DASY52, Version 52.8 (2); SEMCAD X Version 14.6.6 (6824)

**Area Scan(51x111x1):** Interpolated grid:  $dx=1.500$  mm,  $dy=1.500$  mm  
Maximum value of SAR (interpolated) = 1.74W/kg

**Zoom Scan (5x5x6)/Cube 0:** Measurement grid:  $dx=7$ mm,  $dy=7$ mm,  $dz=5$ mm  
Reference Value = 42.731 V/m; Power Drift = -0.14 dB  
Peak SAR (extrapolated) = 2.143 mW/g  
**SAR(1 g) = 1.6 mW/g; SAR(10 g) = 1.18 mW/g**  
Maximum value of SAR (measured) = 1.69 W/kg



Test Plot: TF2 Test Position: Front of Face

Date:2017-03-30

Communication System: Customer System; Frequency:838.05 MHz;

Medium parameters used (interpolated): f=838.05 MHz;  $\sigma=0.91\text{S/m}$ ;  $\epsilon_r=41.48$ ;  $\rho=1000\text{ kg/m}^3$

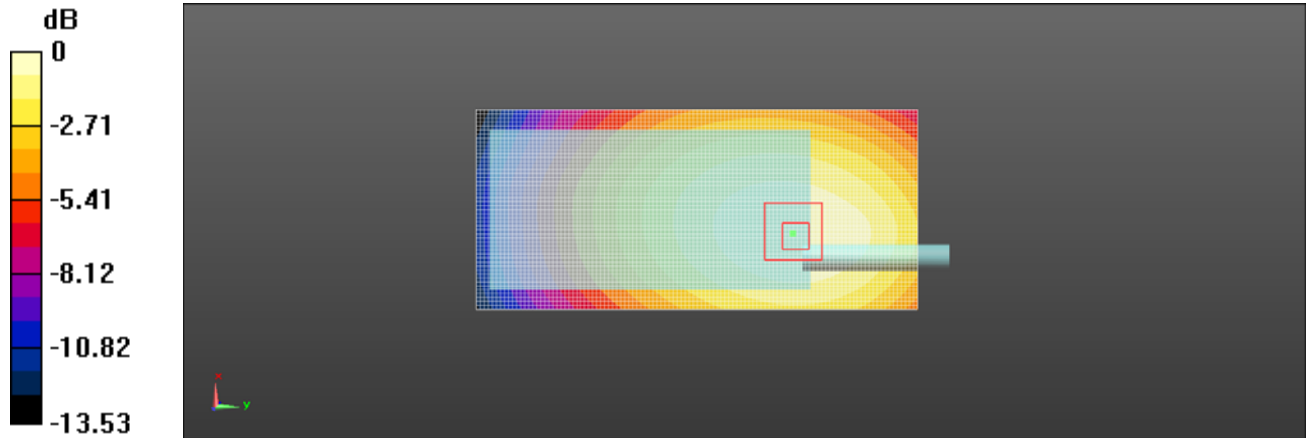
Phantom section : Flat Section

**DASY5 Configuration:**

- Probe: ES3DV3 - SN3292; ConvF(6.53, 6.53, 6.53); Calibrated: 02/09/2016;
- Sensor-Surface: 4mm (Mechanical Surface Detection)
- Electronics: DAE4 Sn1315; Calibrated: 26/07/2016
- Phantom: ELI v4.0; Type: QDOVA001BB
- Measurement SW: DASY52, Version 52.8 (2); SEMCAD X Version 14.6.6 (6824)

**Area Scan(51x111x1):** Interpolated grid: dx=1.500 mm, dy=1.500 mm  
 Maximum value of SAR (interpolated) = 1.92 W/kg

**Zoom Scan (5x5x6)/Cube 0:** Measurement grid: dx=7mm, dy=7mm, dz=5mm  
 Reference Value = 46.113 V/m; Power Drift = -0.12 dB  
 Peak SAR (extrapolated) = 2.300 mW/g  
**SAR(1 g) = 1.72 mW/g; SAR(10 g) = 1.26 mW/g**  
 Maximum value of SAR (measured) = 1.81 W/kg



Test Plot:

DF1

Test Position:

Front of Face

Date:2017-03-30

Communication System: Customer System; Frequency:838.05 MHz;

Medium parameters used (interpolated):  $f=838.05$  MHz;  $\sigma=0.91$ S/m;  $\epsilon_r=41.48$ ;  $\rho=1000$  kg/m<sup>3</sup>

Phantom section : Flat Section

**DASY5 Configuration:**

- Probe: ES3DV3 - SN3292; ConvF(6.53, 6.53, 6.53); Calibrated: 02/09/2016;
- Sensor-Surface: 4mm (Mechanical Surface Detection)
- Electronics: DAE4 Sn1315; Calibrated: 26/07/2016
- Phantom: ELI v4.0; Type: QDOVA001BB
- Measurement SW: DASY52, Version 52.8 (2); SEMCAD X Version 14.6.6 (6824)

**Area Scan(51x111x1):** Interpolated grid:  $dx=1.500$  mm,  $dy=1.500$  mm

Maximum value of SAR (interpolated) = 1.79 W/kg

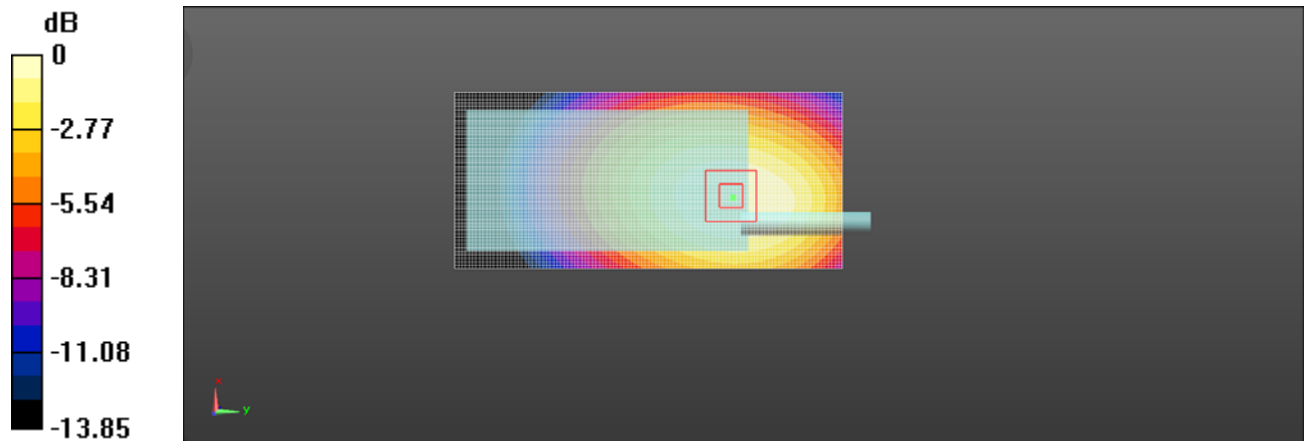
**Zoom Scan (5x5x6)/Cube 0:** Measurement grid:  $dx=7$ mm,  $dy=7$ mm,  $dz=5$ mm

Reference Value = 43.422 V/m; Power Drift = -0.15 dB

Peak SAR (extrapolated) = 3.048 mW/g

**SAR(1 g) = 1.68 mW/g; SAR(10 g) = 1.22 mW/g**

Maximum value of SAR (measured) =1.74 W/kg



Test Plot:	DF2	Test Position:	Front of Face
------------	-----	----------------	---------------

Date:2017-03-30

Communication System: Customer System; Frequency:838.05 MHz;

Medium parameters used (interpolated): f=838.05 MHz;  $\sigma=0.91\text{S/m}$ ;  $\epsilon_r=41.48$ ;  $\rho=1000\text{ kg/m}^3$ 

Phantom section : Flat Section

**DASY5 Configuration:**

- Probe: ES3DV3 - SN3292; ConvF(6.53, 6.53, 6.53); Calibrated: 02/09/2016;
- Sensor-Surface: 4mm (Mechanical Surface Detection)
- Electronics: DAE4 Sn1315; Calibrated: 26/07/2016
- Phantom: ELI v4.0; Type: QDOVA001BB
- Measurement SW: DASY52, Version 52.8 (2); SEMCAD X Version 14.6.6 (6824)

**Area Scan(51x111x1):** Interpolated grid: dx=1.500 mm, dy=1.500 mm

Maximum value of SAR (interpolated) = 1.90W/kg

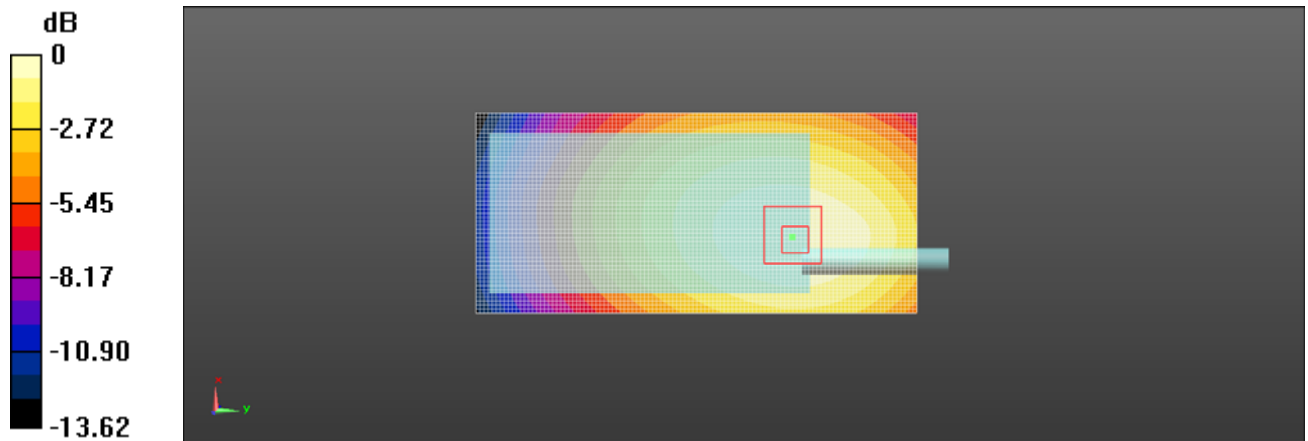
**Zoom Scan (5x5x6)/Cube 0:** Measurement grid: dx=7mm, dy=7mm, dz=5mm

Reference Value = 46.241 V/m; Power Drift = -0.16 dB

Peak SAR (extrapolated) = 2.376 mW/g

**SAR(1 g) = 1.76 mW/g; SAR(10 g) = 1.29 mW/g**

Maximum value of SAR (measured) = 1.88 W/kg



Test Plot:	TB1	Test Position:	Body-worn
------------	-----	----------------	-----------

Date:2017-03-31

Communication System: Customer System; Frequency:838.05 MHz;

Medium parameters used (interpolated): f=838.05 MHz;  $\sigma=0.97\text{S/m}$ ;  $\epsilon_r=55.10$ ;  $\rho=1000\text{ kg/m}^3$ 

Phantom section : Flat Section

**DASY5 Configuration:**

- Probe: ES3DV3 - SN3292; ConvF(6.27, 6.27, 6.27); Calibrated: 02/09/2016;
- Sensor-Surface: 4mm (Mechanical Surface Detection)
- Electronics: DAE4 Sn1315; Calibrated: 26/07/2016
- Phantom: ELI v4.0; Type: QDOVA001BB
- Measurement SW: DASY52, Version 52.8 (2); SEMCAD X Version 14.6.6 (6824)

**Area Scan(51x111x1):** Interpolated grid: dx=1.500 mm, dy=1.500 mm

Maximum value of SAR (interpolated) = 4.00W/kg

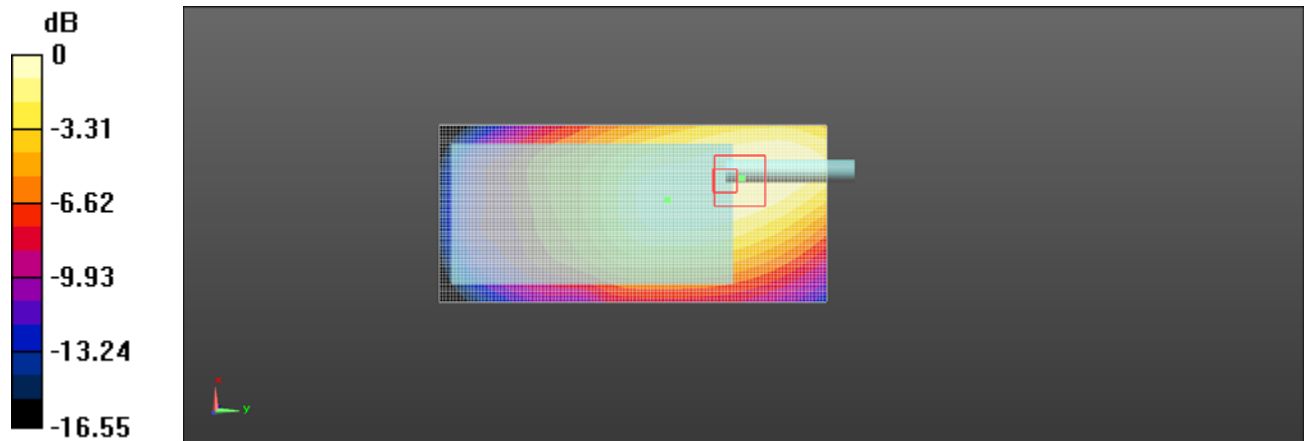
**Zoom Scan (5x5x6)/Cube 0:** Measurement grid: dx=7mm, dy=7mm, dz=5mm

Reference Value = 59.323 V/m; Power Drift = -0.12 dB

Peak SAR (extrapolated) = 7.890 mW/g

**SAR(1 g) = 3.72 mW/g; SAR(10 g) = 2.39 mW/g**

Maximum value of SAR (measured) = 3.91 W/kg





Test Plot:	TB1	Test Position:	Body-worn
------------	-----	----------------	-----------

Date:2017-03-31

Communication System: Customer System; Frequency:838.05 MHz;

Medium parameters used (interpolated):  $f=838.05$  MHz;  $\sigma=0.97$ S/m;  $\epsilon_r=55.10$ ;  $\rho=1000$  kg/m<sup>3</sup>

Phantom section : Flat Section

**DASY5 Configuration:**

- Probe: ES3DV3 - SN3292; ConvF(6.27, 6.27, 6.27); Calibrated: 02/09/2016;
- Sensor-Surface: 4mm (Mechanical Surface Detection)
- Electronics: DAE4 Sn1315; Calibrated: 26/07/2016
- Phantom: ELI v4.0; Type: QDOVA001BB
- Measurement SW: DASY52, Version 52.8 (2); SEMCAD X Version 14.6.6 (6824)

**Area Scan(51x111x1):** Interpolated grid: dx=1.500 mm, dy=1.500 mm

Maximum value of SAR (interpolated) = 4.37W/kg

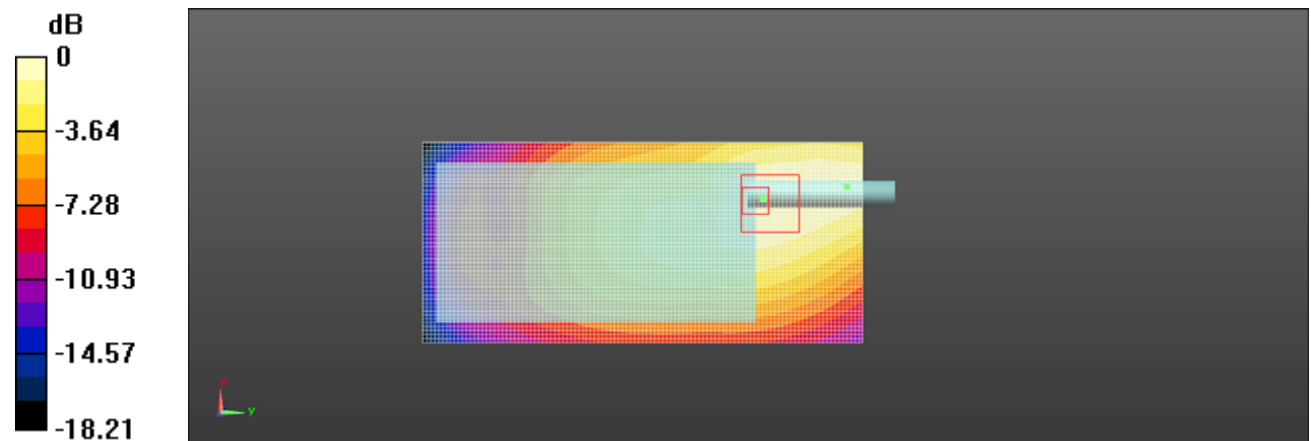
**Zoom Scan (5x5x6)/Cube 0:** Measurement grid: dx=7mm, dy=7mm, dz=5mm

Reference Value = 62.155 V/m; Power Drift = -0.11 dB

Peak SAR (extrapolated) = 6.601 mW/g

**SAR(1 g) = 4.02 mW/g; SAR(10 g) = 2.67 mW/g**

Maximum value of SAR (measured) = 4.40 W/kg



Test Plot:	DB1	Test Position:	Body-worn
------------	-----	----------------	-----------

Date:2017-03-31

Communication System: Customer System; Frequency:838.05 MHz;

Medium parameters used (interpolated):  $f=838.05$  MHz;  $\sigma=0.97$ S/m;  $\epsilon_r=55.10$ ;  $\rho=1000$  kg/m<sup>3</sup>

Phantom section : Flat Section

**DASY5 Configuration:**

- Probe: ES3DV3 - SN3292; ConvF(6.27, 6.27, 6.27); Calibrated: 02/09/2016;
- Sensor-Surface: 4mm (Mechanical Surface Detection)
- Electronics: DAE4 Sn1315; Calibrated: 26/07/2016
- Phantom: ELI v4.0; Type: QDOVA001BB
- Measurement SW: DASY52, Version 52.8 (2); SEMCAD X Version 14.6.6 (6824)

**Area Scan(51x111x1):** Interpolated grid:  $dx=1.500$  mm,  $dy=1.500$  mm

Maximum value of SAR (interpolated) = 4.24 W/kg

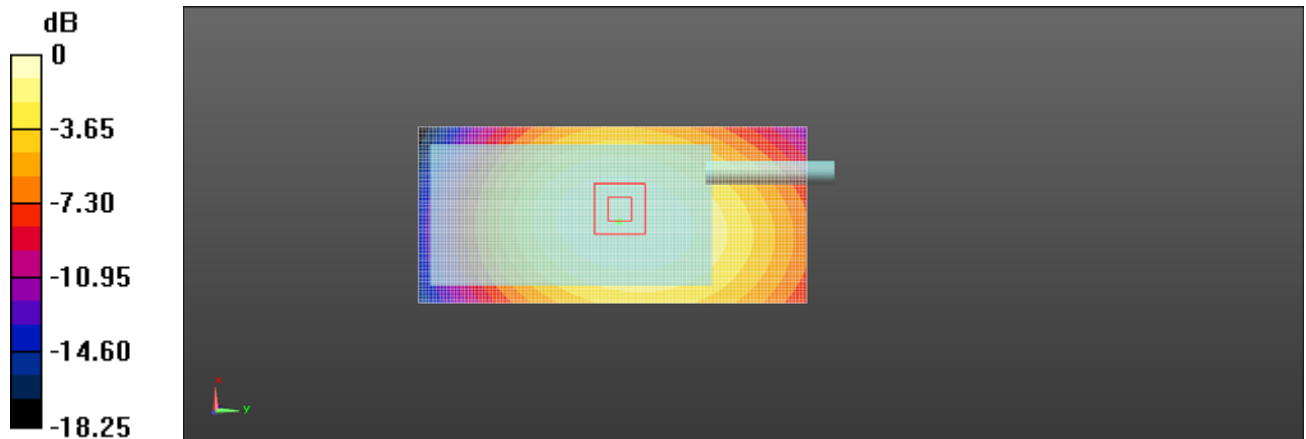
**Zoom Scan (5x5x6)/Cube 0:** Measurement grid:  $dx=7$ mm,  $dy=7$ mm,  $dz=5$ mm

Reference Value = 60.252 V/m; Power Drift = -0.10 dB

Peak SAR (extrapolated) = 5.495 mW/g

**SAR(1 g) = 3.85 mW/g; SAR(10 g) = 2.73 mW/g**

Maximum value of SAR (measured) =4.06W/kg



Test Plot:	DB2	Test Position:	Body-worn
------------	-----	----------------	-----------

Date:2017-03-31

Communication System: Customer System; Frequency:838.05 MHz;

Medium parameters used (interpolated):  $f=838.05$  MHz;  $\sigma=0.97$ S/m;  $\epsilon_r=55.10$ ;  $\rho=1000$  kg/m<sup>3</sup>

Phantom section : Flat Section

**DASY5 Configuration:**

- Probe: ES3DV3 - SN3292; ConvF(6.27, 6.27, 6.27); Calibrated: 02/09/2016;
- Sensor-Surface: 4mm (Mechanical Surface Detection)
- Electronics: DAE4 Sn1315; Calibrated: 26/07/2016
- Phantom: ELI v4.0; Type: QDOVA001BB
- Measurement SW: DASY52, Version 52.8 (2); SEMCAD X Version 14.6.6 (6824)

**Area Scan(51x111x1):** Interpolated grid:  $dx=1.500$  mm,  $dy=1.500$  mm

Maximum value of SAR (interpolated) = 4.48W/kg

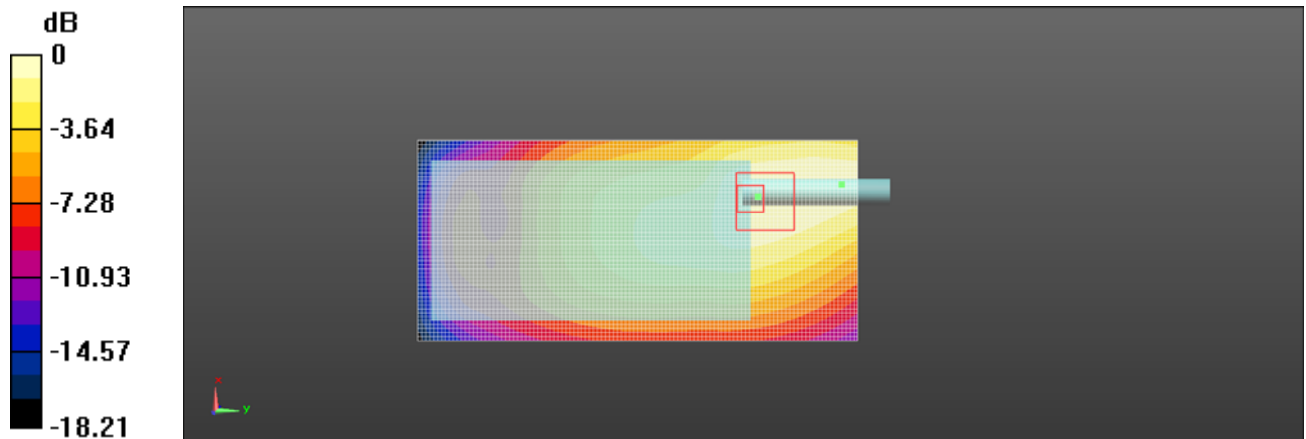
**Zoom Scan (5x5x6)/Cube 0:** Measurement grid:  $dx=7$ mm,  $dy=7$ mm,  $dz=5$ mm

Reference Value = 65.426 V/m; Power Drift = -0.12 dB

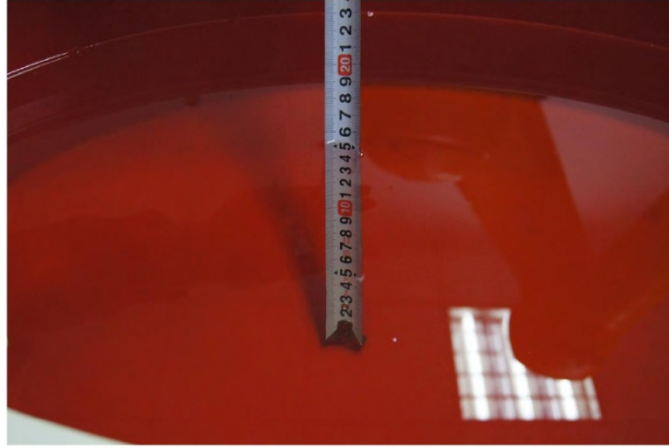
Peak SAR (extrapolated) = 6.727 mW/g

**SAR(1 g) = 4.08 mW/g; SAR(10 g) = 2.70 mW/g**

Maximum value of SAR (measured) = 4.52 W/kg



### 15. TestSetup Photos



Liquid depth in the flat Phantom (835MHz) (15.3cm deep)



Body (0mm)



Face (25mm)

### 16. Photos of the EUT

Please referce to the test report No.: TRE1703009601

-----End of Report-----