



## *Owner's Manual*

*POA121 Wireless PTT*



is the trademark or registered trademark of Hytera Communications Corporation Limited.

© 2017 Hytera Communications Corporation Limited. All Rights Reserved.

Address: Hytera Tower, Hi-Tech Industrial Park North, 9108# Beihuan Road, Nanshan District,  
Shenzhen, People's Republic of China

Postcode: 518057

[http:// www.hytera.com](http://www.hytera.com)

O10745 Y17982 Z04313



5202010000775A

## Preface

Welcome to the world of Hytera and thank you for purchasing this product. To derive optimum performance from the product, please carefully read this manual before use.

This manual is applicable to the following products:

*POA121 Wireless PTT*

### Packing List

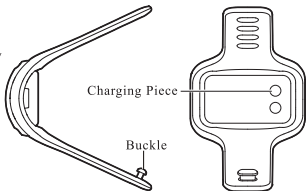
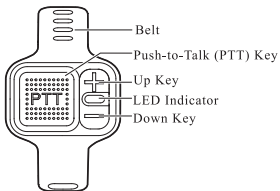
Please unpack carefully and check that you have received the following items. If any item is missing or damaged, please contact your dealer.

No.	Item	Qty.
1	Wireless PTT	1
2	Charger	1
3	Owner's Manual	1

# Product Introduction

## Product Layout

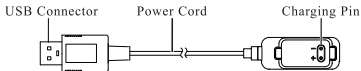
### Wireless PTT



#### Note

The **Up Key** and **Down Key** can be programmed to **Volume Control** keys or **Channel Selector** keys. For details, consult your dealer.

## Charger



## LED Indicator

LED Indication		Description
Blue	Flashes for 4 times	The product is being turned on.
	On	The BT is pairing.
	Flashes twice every 3s	The wireless connection is established, but no voice is being transmitted.
	Flashes once every 1s	The wireless connection is established, and voice is being transmitted.
	Flashes once every 3s	The wireless connection is not established.

LED Indication		Description
Red	Flashes for 4 times	The product is being turned off (BT not connected).
	Flashes 2 times, and then flashes 3 times after 1s stop	The product is being turned off (BT connected).
	Flashes once every 3s	The battery is low.
	Flashes once every 1s	The product is being charged.
	On	The product is transmitting.
Green	On	The product is fully charged.

## Specifications

Item	Specification
Communication Distance	10 m
Battery Life (5-5-90 Duty Cycle)	120 h
Battery Capacity	33mAh
Charging Time	1.5 h
Dust & Water Protection	IP67
Operating Temperature	-20°C to +60°C
Storage Temperature	-40°C to +85°C

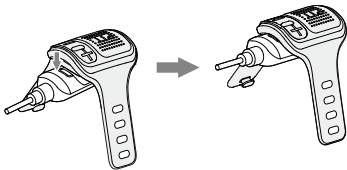
## Before Use

### Charging the Product



- Turn off the product and get it fully charged if it stays idle for a long time. Charge it every three months to prolong its lifespan.
- Turn off the product before charging; otherwise, it will be reset and turned off automatically.

The LED indicator flashes once every 3s, indicating that the battery is low. To charge the product, do as follows:



After the product is fully charged, go through the steps reversely to remove it.

## Wearing the Wireless PTT

Adjust the ring belt to fit your finger and wear it.

## Basic Operations

### Turning the Product On or Off

To turn on the product, press and hold both **Up** Key and **Down** Key simultaneously until the LED indicator flashes blue rapidly.

To turn off the product, press and hold both **Up** Key and **Down** Key simultaneously until the LED indicator flashes red rapidly.



#### Note

If the product does not establish wireless connection within five minutes, it will be turned off automatically.

## Pairing the Product

The product can work properly only when it is paired with the wireless audio adapter or the radio with BT module. After initial pairing, whenever you turn on the product, the connection will be automatically established.

To enter pairing mode:

- For Wireless Ring PTT: press and hold both **Up Key** and **Down Key** until the LED indicator flashes blue.
- For wireless audio adapter or radio with BT module: refer to corresponding User Manual for details.

The LED indicator flashes blue, indicating that the wireless connection is established.



### Note

- The product will exit if the connection is not established three minutes after entering pairing mode.
- The product will always pair with the last connected wireless audio adapter or radio.

## Making a call

To make a call, press and hold the **PTT** key, and then speak into the microphone on the audio device. Release the **PTT** key when finished.



**FCC Notice:**

This device complies with Part 15 of the FCC rules. Operation is subject to the following two conditions: (1) This device may not cause harmful interference. (2) This device must accept any interference received, including interference that may cause undesired operation.

NOTE: This equipment has been tested and found to comply with the limits for a Class B digital device, pursuant to Part 15 of the FCC rules. These limits are designed to provide reasonable protection against harmful interference in a residential installation. This equipment generates uses and can radiate radio frequency energy and, if not installed and used in accordance with the instructions, may cause harmful interference to radio communications. However, there is no guarantee that interference will not occur in a particular installation. If this equipment does cause harmful interference to radio or television reception, which can be determined by turning the equipment off and on, the user is encouraged to try to correct the interference by one or more of the following measures:

- Reorient or relocate the receiving antenna.
- Increase the separation between the equipment and receiver.
- Connect the equipment into an outlet on a circuit different from that to which the receiver is connected.
- Consult the dealer or an experienced radio/TV technician for help.

**WARNING:** Changes or modifications not expressly approved by the party responsible for compliance could void the user's authority to operate the equipment.

**IC Notice:**

This device complies with Canada Industry licence-exempt RSS standard(s). Operation is subject to the following two conditions:

- (1) this device may not cause interference; and
- (2) this device must accept any interference. Including interference that may cause undesired operation of the device.

Cet appareil est conforme aux CNR exemptes de licence d'Industrie Canada . Son fonctionnement est soumis aux deux conditions suivantes :

- ( 1 ) Ce dispositif ne peut causer d'interférences ; et
- ( 2 ) Ce dispositif doit accepter toute interférence , y compris les interférences qui peuvent causer un mauvais fonctionnement de l'appareil.

*CAN ICES-3 (B)*

**Avis d'Industrie Canada**

Le présent appareil est conforme aux CNR d'industrie Canada applicables aux appareils radio exempts de licence L'exploitation est autorisée aux deux conditions suivantes:

- 1) l'appareil ne doit pas produire de brouillage; et
- 2) l'utilisateur de l'appareil doit accepter brouillage radioélectrique subi même si le brouillage est susceptible d'en compromettre le fonctionnement. mauvais fonctionnement de l'appareil.

Cet appareil numérique de la classe B est conforme à la norme NMB-003 du Canada.

CAN NMB-3 (B)

**Radiation Exposure Statement:**

This equipment complies with IC radiation exposure limits set forth for an uncontrolled environment. This equipment should be installed and operated with minimum distance 0mm between the radiator & your body.

**Déclaration d'exposition aux radiations:**

Cet équipement est conforme aux limites d'exposition aux rayonnements IC établies pour un environnement non contrôlé. Cet équipement doit être installé et utilisé avec un minimum de 0mm de distance entre la source de rayonnement et votre corps.

## **Caution**

- 1.Risk of explosion if battery is replaced by an incorrect type. Dispose of used batteries according to the instructions.
- 3.The max operating of the EUT is 60°C. and shouldn't be lower than -20°C.
- 4.The device complies with RF specifications when the device used at 0mm form your body.
- 5.Declaration of Conformity

We, Hytera Communications Corporation Limited  
hereby, declare that the essential requirements compliance with the Directive 2014/53/EU.  
have been fully fulfilled on our product with indication below:

Product Name: Wireless PTT

Brand Name : Hytera

Model : POA121

This product can be used across EU member states.