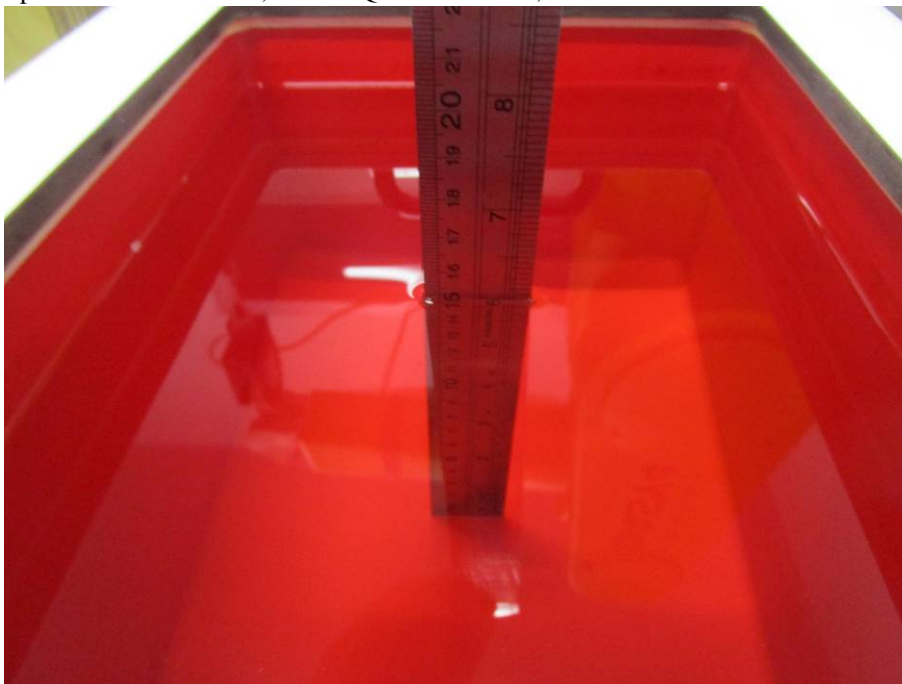


APPENDIX B EUT TEST POSITION PHOTOS

Liquid depth $\geq 15\text{cm}$

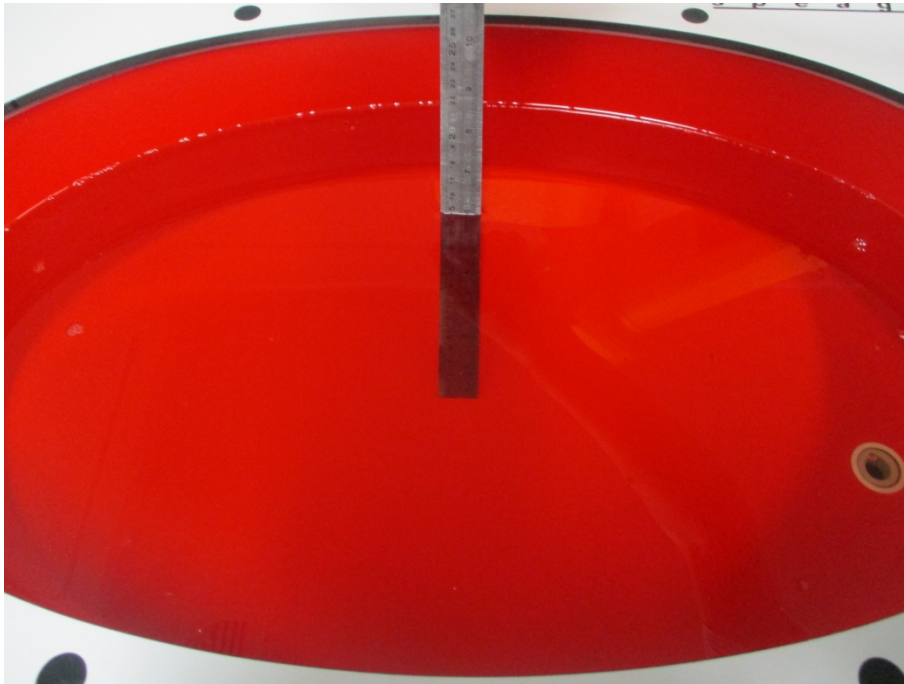
Phantom Type: Triple Flat Phantom 5.1C; Model: QD 000 P51 CA; S/N: 1130



Phantom Type: Twin SAM; Model: Twin SAM V5.0; S/N: 1412



Phantom Type: Oval Flat Phantom; Model: ELI V8.0; S/N: 2051

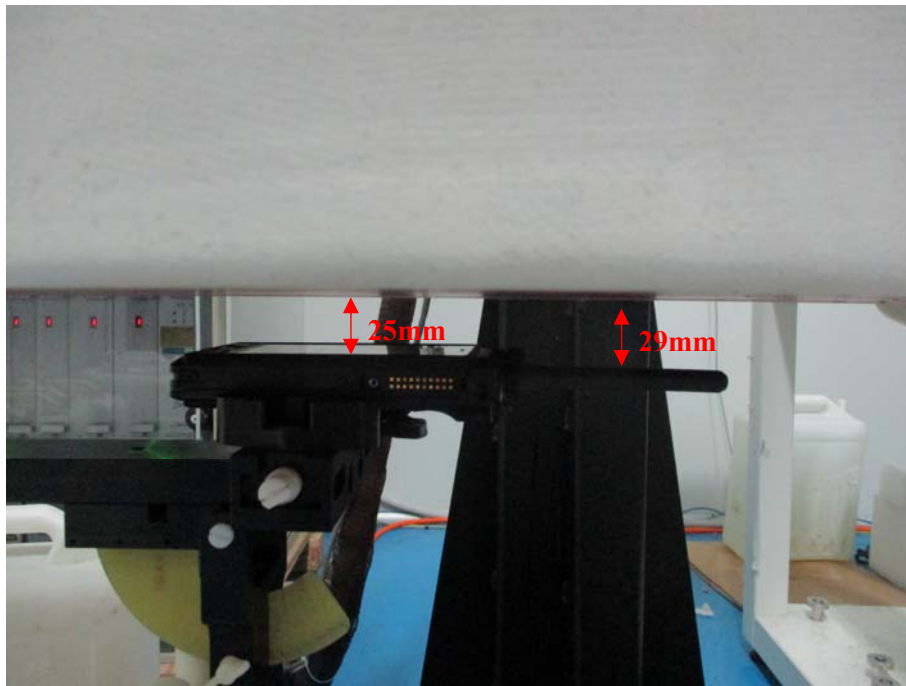


Accessories:



SAR Lab 1:

Face-Up Setup Photo(25mm)



Body(Worn) Back Setup Photo(0mm)



SAR Lab 2:

Head Left Cheek Setup Photo



Head Left Tilt Setup Photo



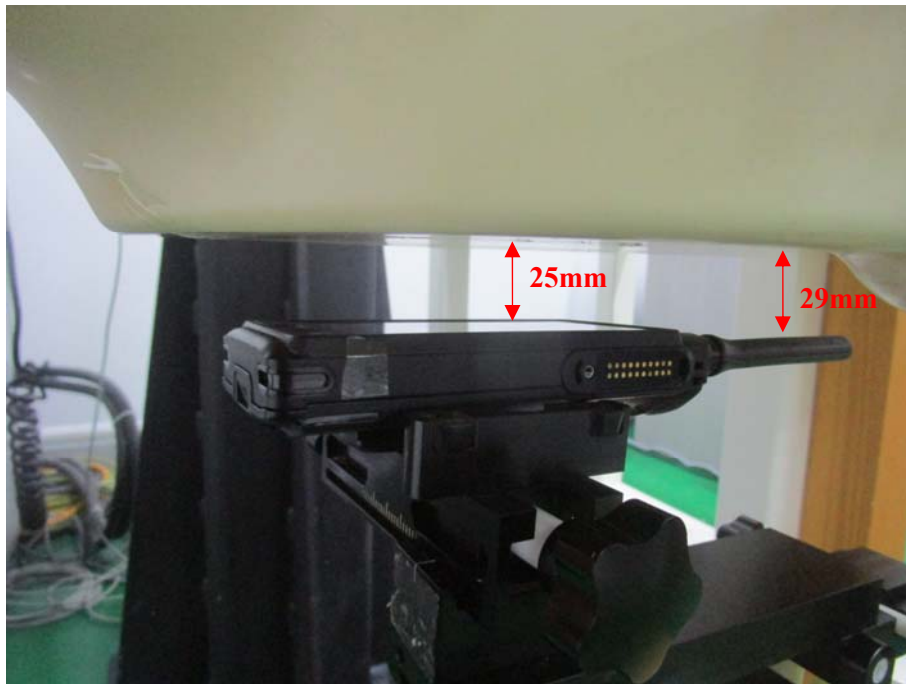
Head Right Check Setup Photo



Head Right Tilt Setup Photo



Face-Up Setup Photo(25mm)



Body(Worn) Back Setup Photo(0mm)



Body Front Setup Photo(10mm)



Body Back(Hotspot) Setup Photo(10mm)



Body Left Setup Photo(10mm)



Body Right Setup Photo(10mm)



Body Bottom Setup Photo(10mm)

