

EXHIBIT C - EUT INTERNAL PHOTOGRAPHS

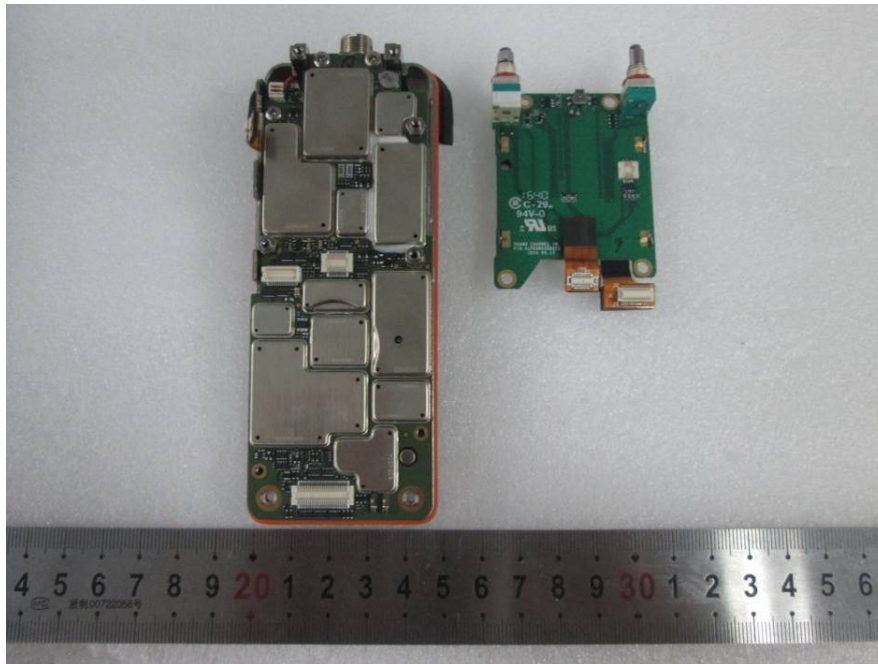
EUT – Cover off View 1



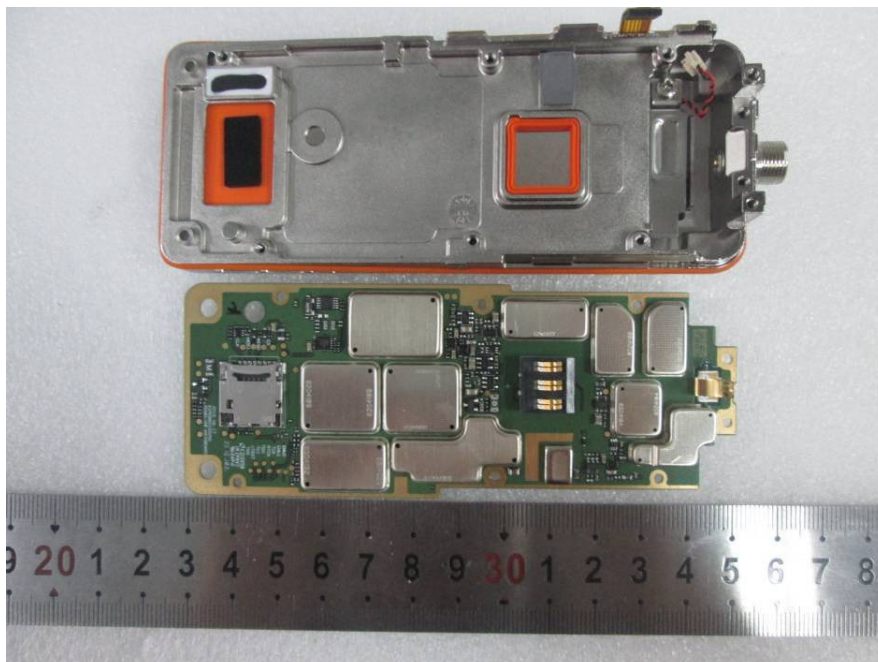
EUT – Cover off View 2



EUT – Cover off View 3

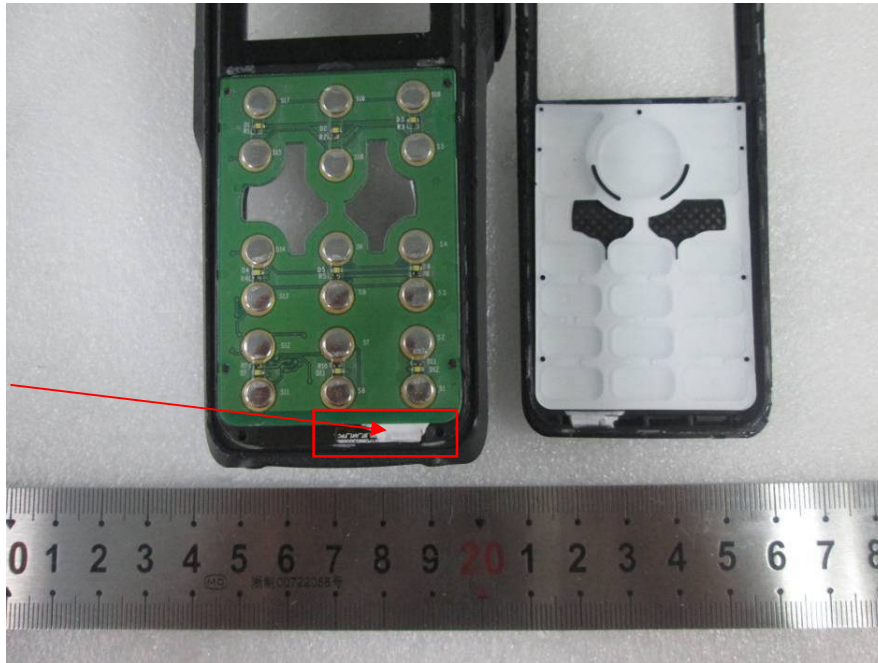


EUT – Cover off View 4

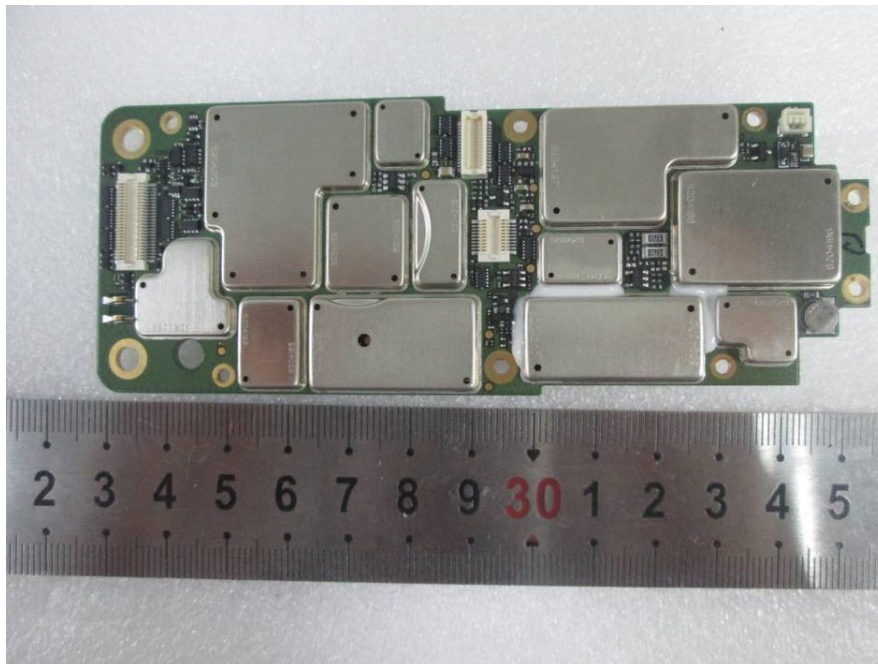


EUT – Cover off View 5

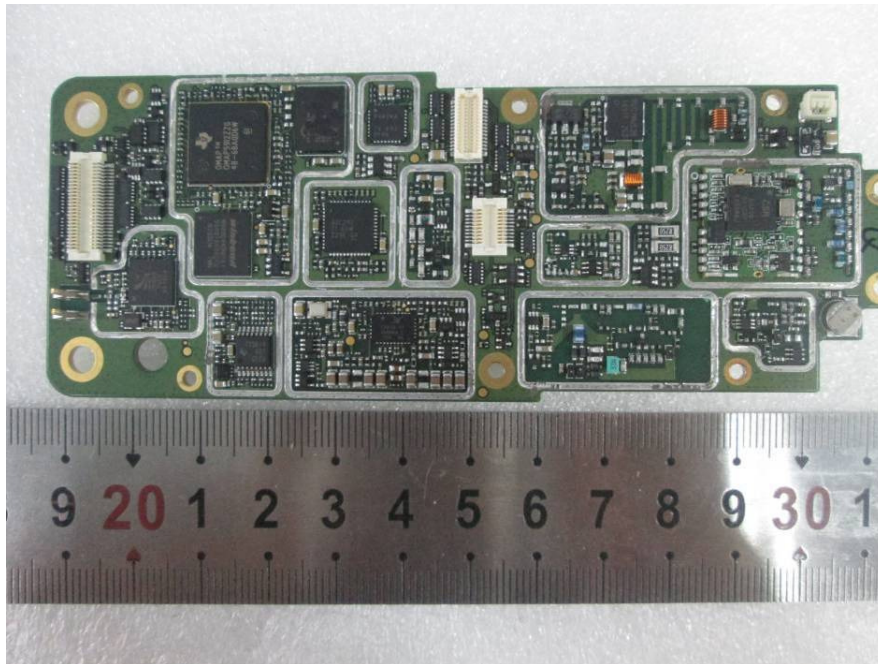
BT Antenna



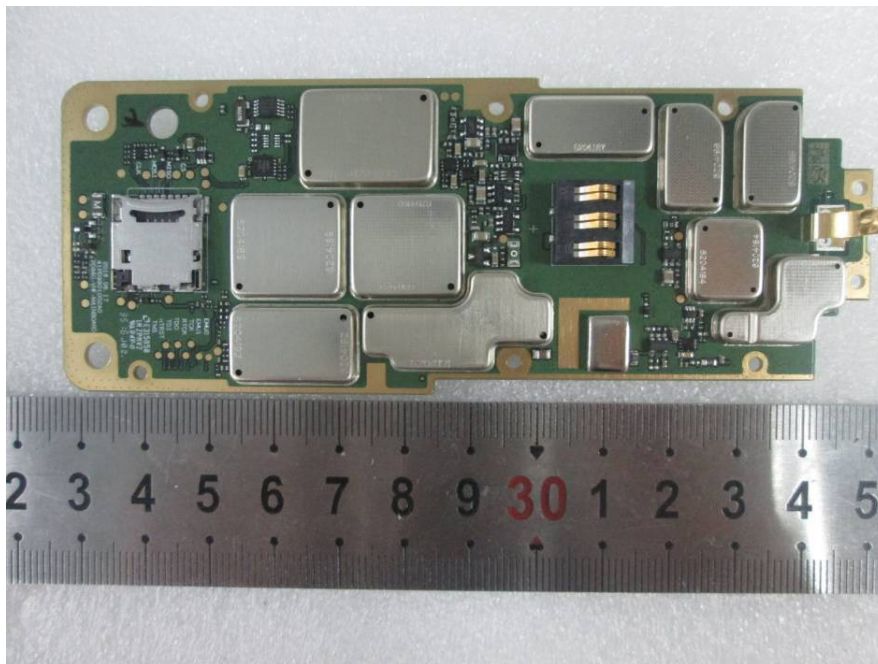
EUT – Main Board 1 Top View



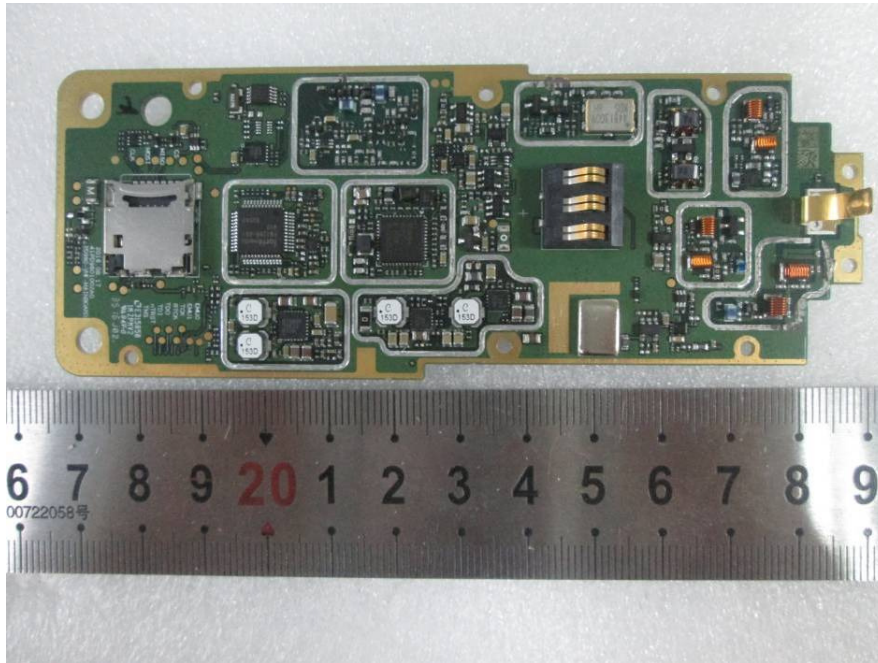
EUT – Main Board 1 Top Shilding off View



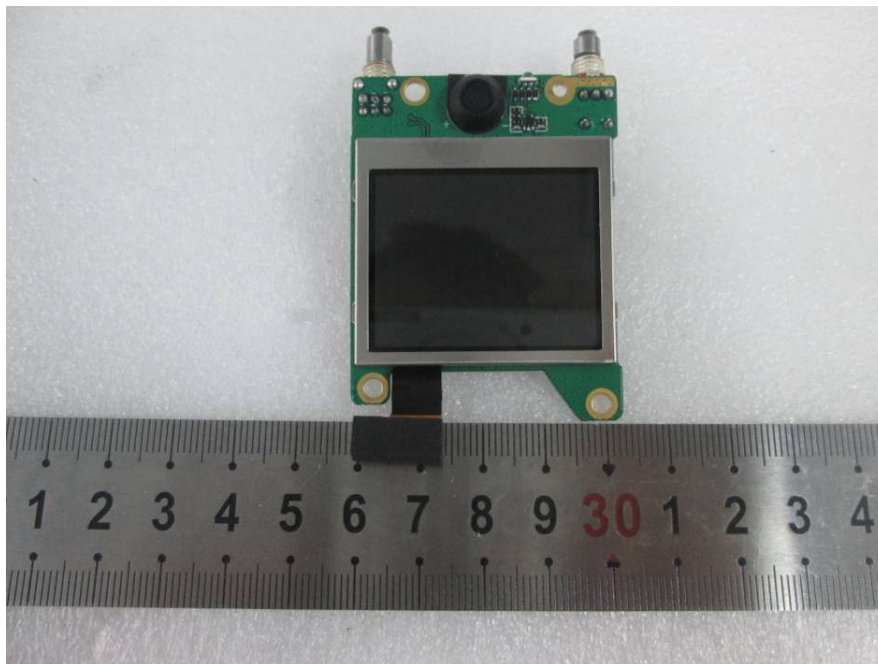
EUT – Main Board 1 Bottom View



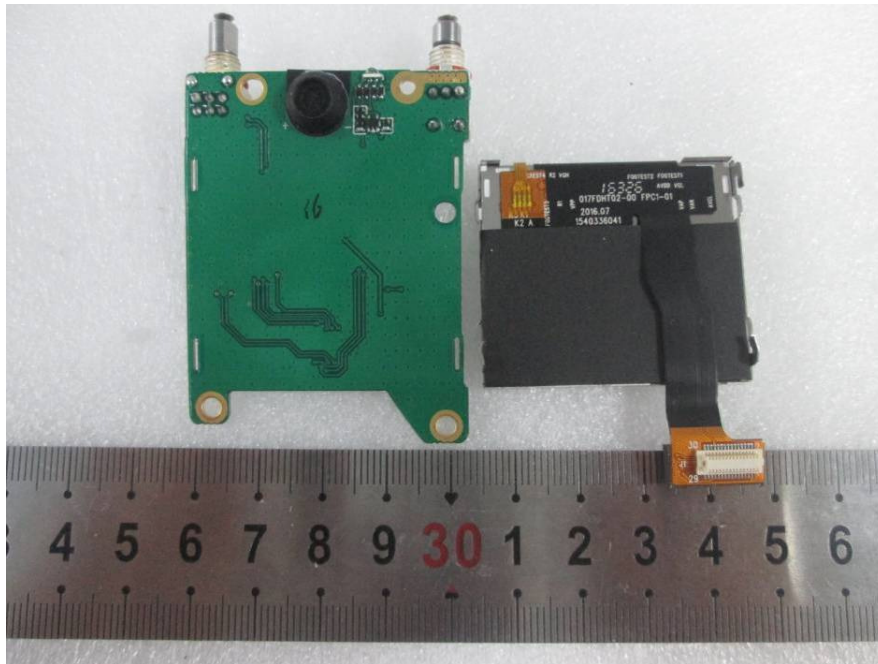
EUT – Main Board 1 Bottom Shielding off View



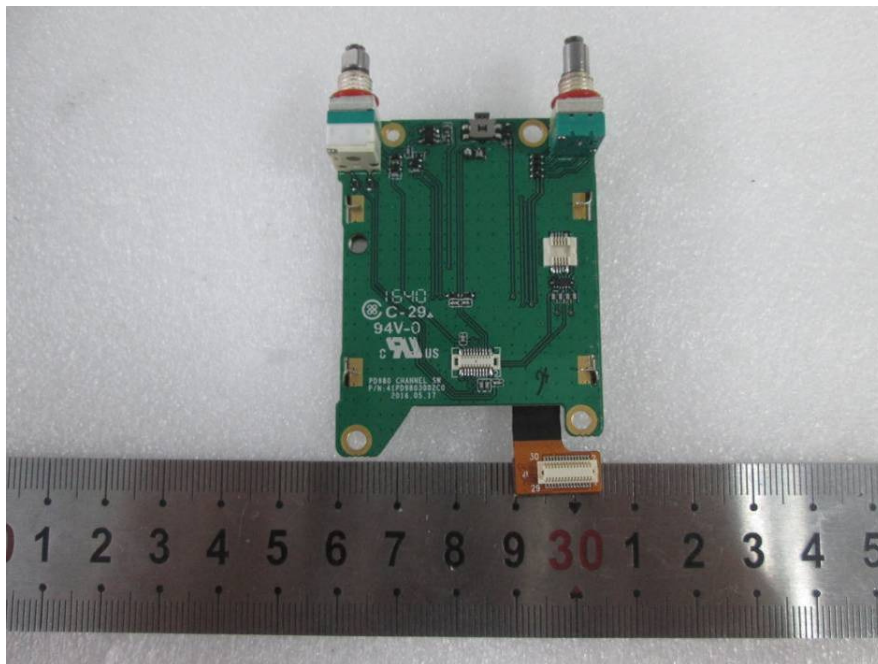
EUT – Main Board 2 TopView



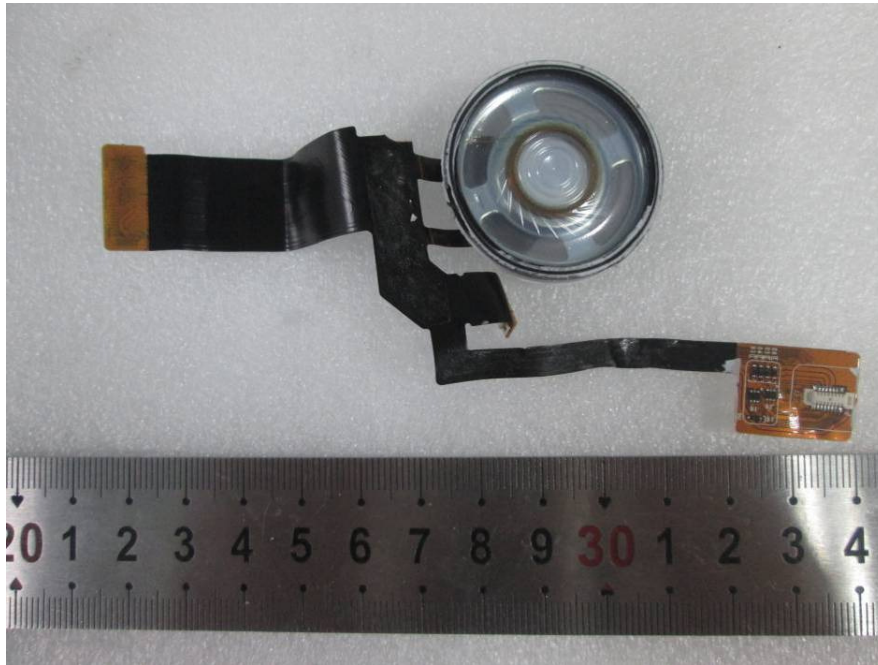
EUT – Main Board 2 Top Shilding off View



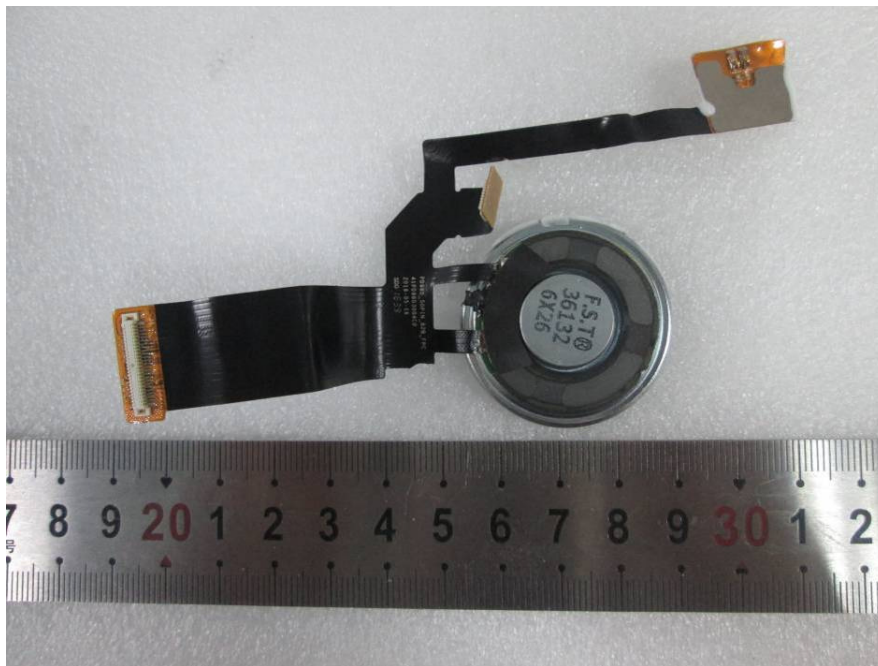
EUT – Main Board 2 Bottom View



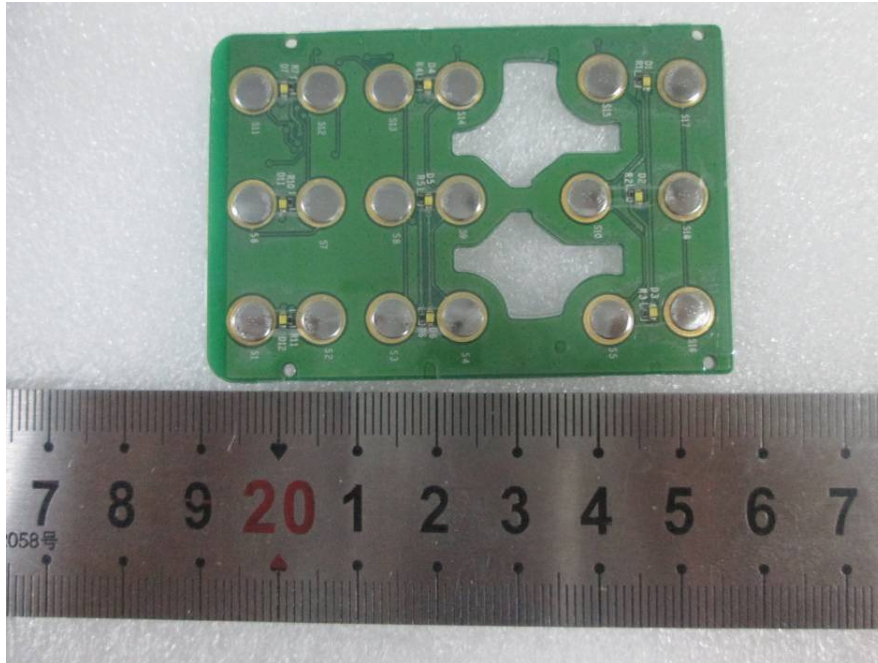
EUT – Speaker View 1



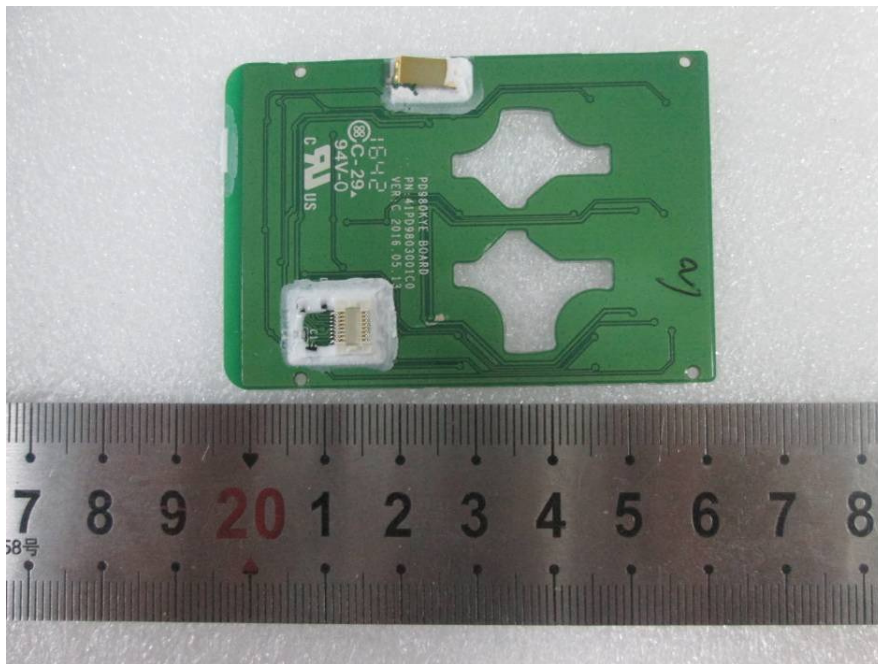
EUT – Speaker View 2



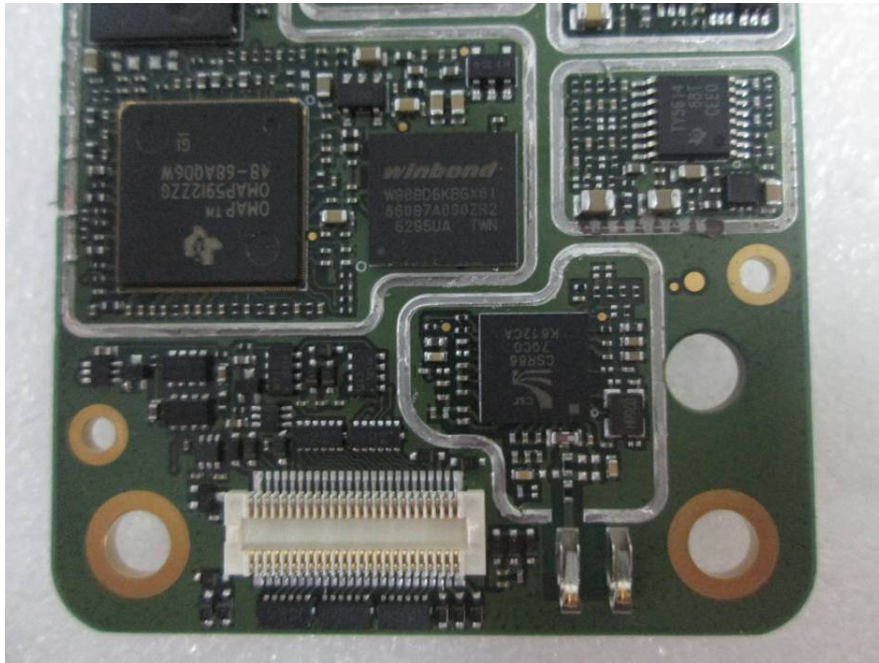
EUT – Key Board Top View



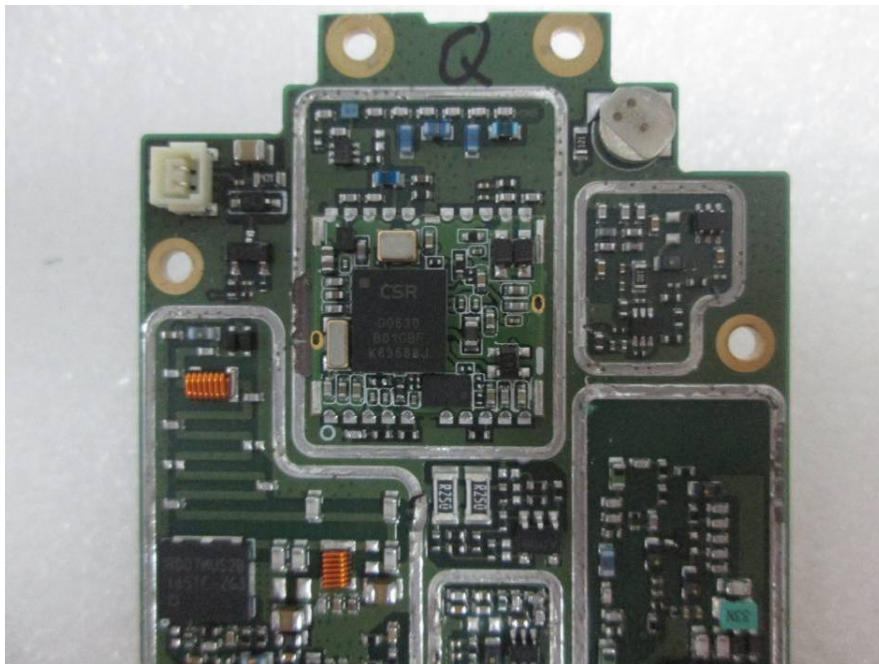
EUT –Key Board Bottom View



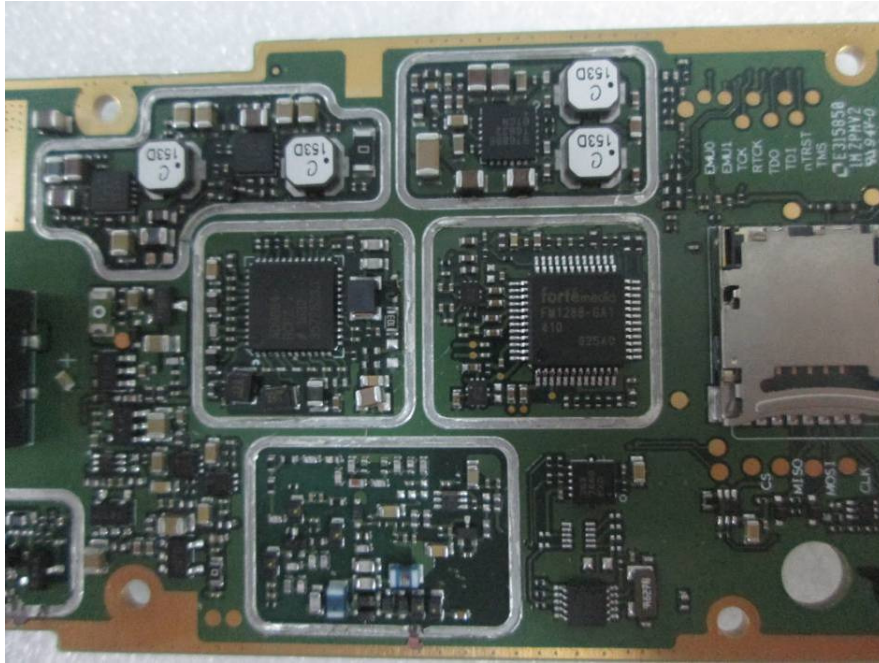
EUT -IC Main View 1



EUT -IC Main View 2



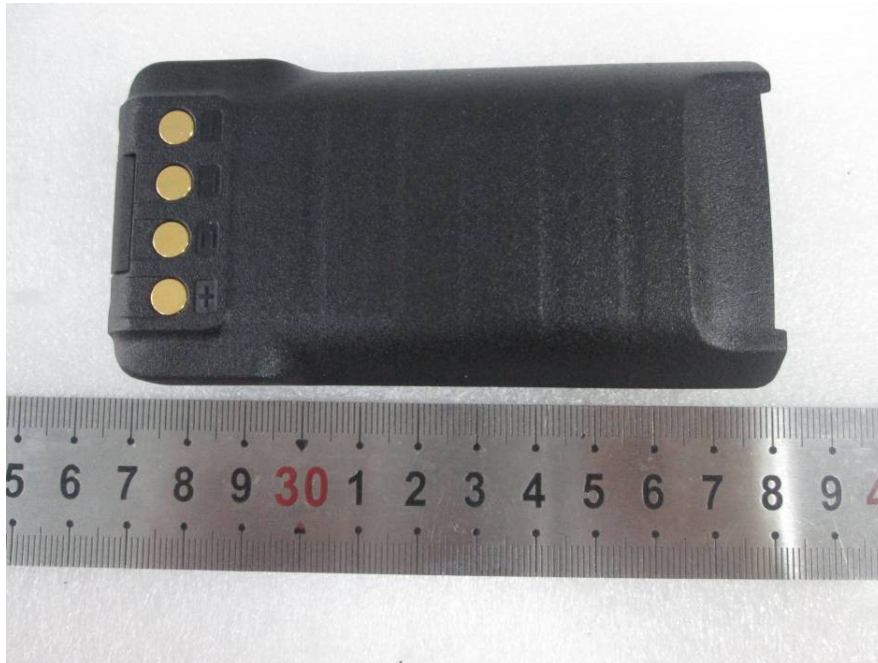
EUT -IC Main View 3



EUT -Battery Top View



EUT -Battery Bottom View



EUT - Battery Label View

+ -
Hytera
Li-ION BATTERY PACK
BL2016
7.2V, 2000mAh, 14.4Wh
2ICP7/39/65 Date: xxxxxx