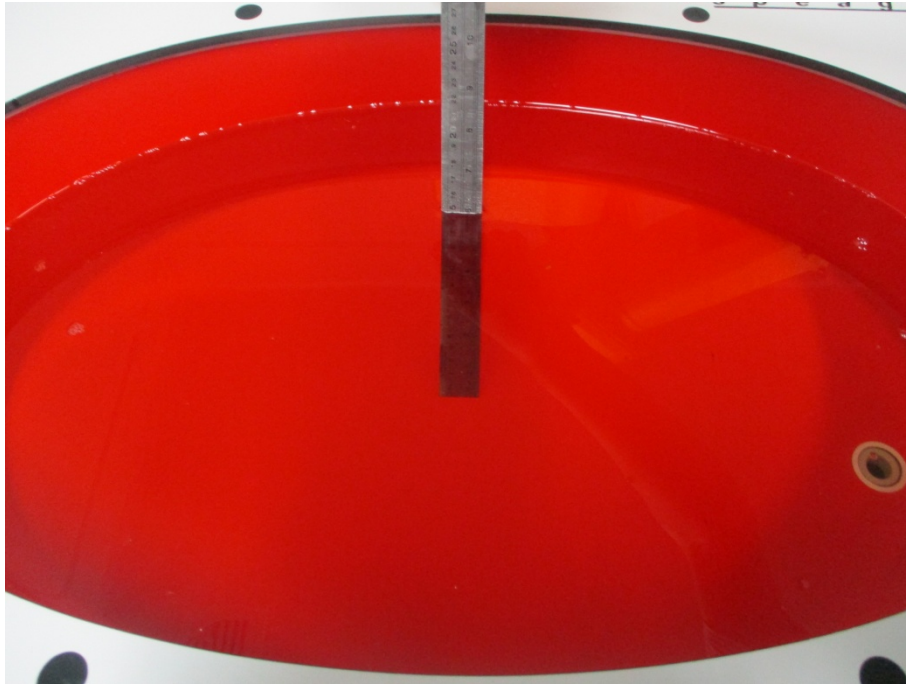


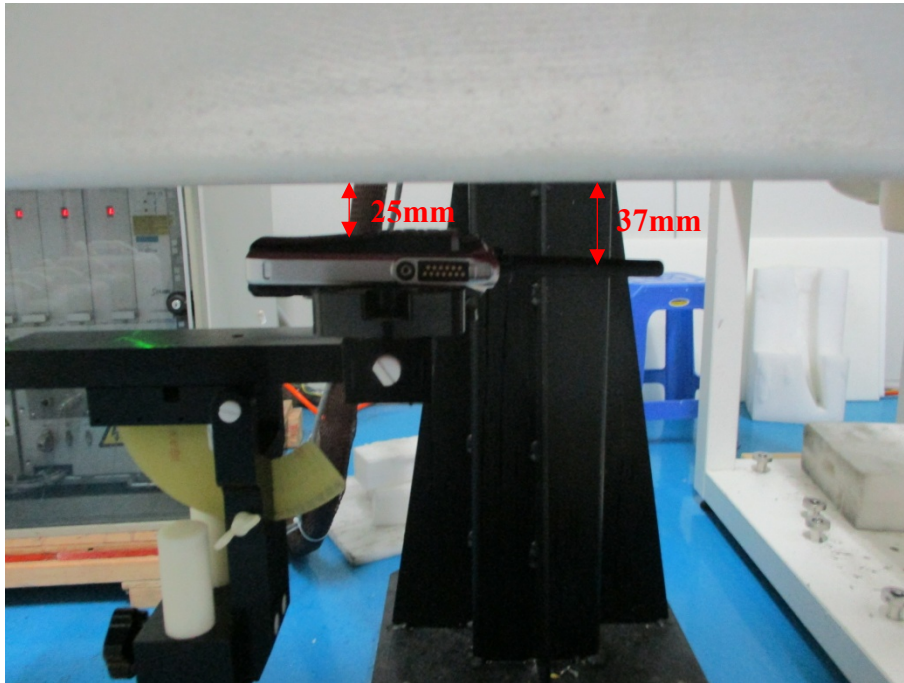
APPENDIX B EUT TEST POSITION PHOTOS

Liquid depth \geq 15cm

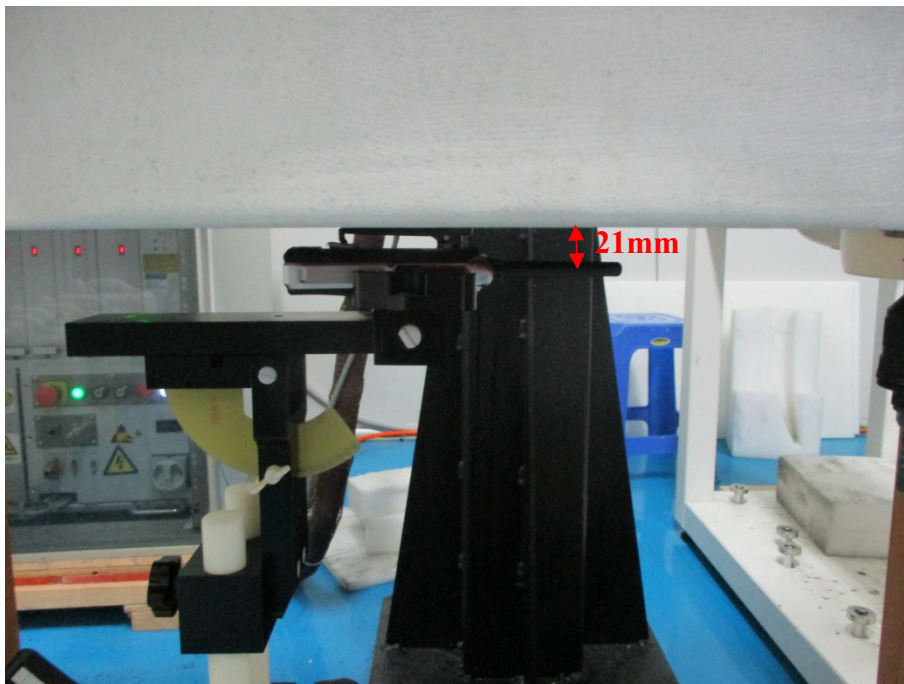


Antenna 1 ~ 4:

Face Up Setup Photo(25mm)

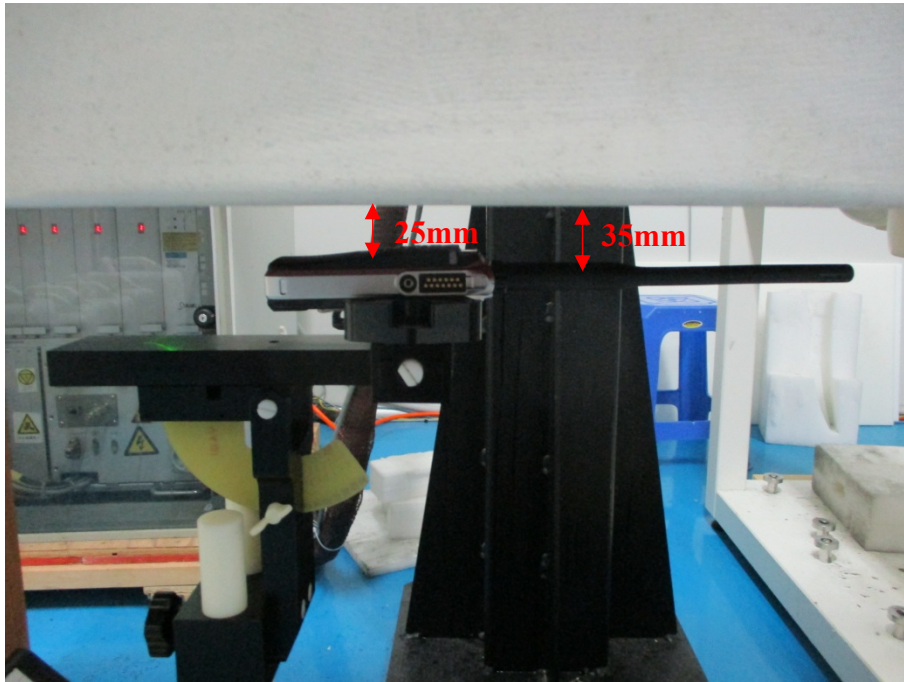


Body Worn Back Setup Photo(0mm)



Antenna 5:

Face Up Setup Photo(25mm)



Body Worn Back Setup Photo(0mm)

