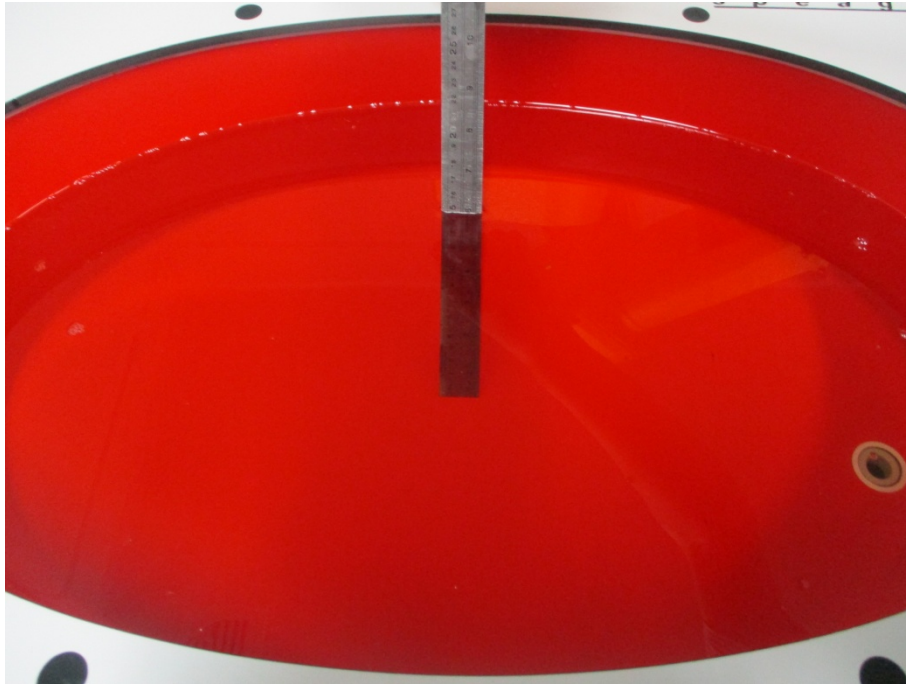


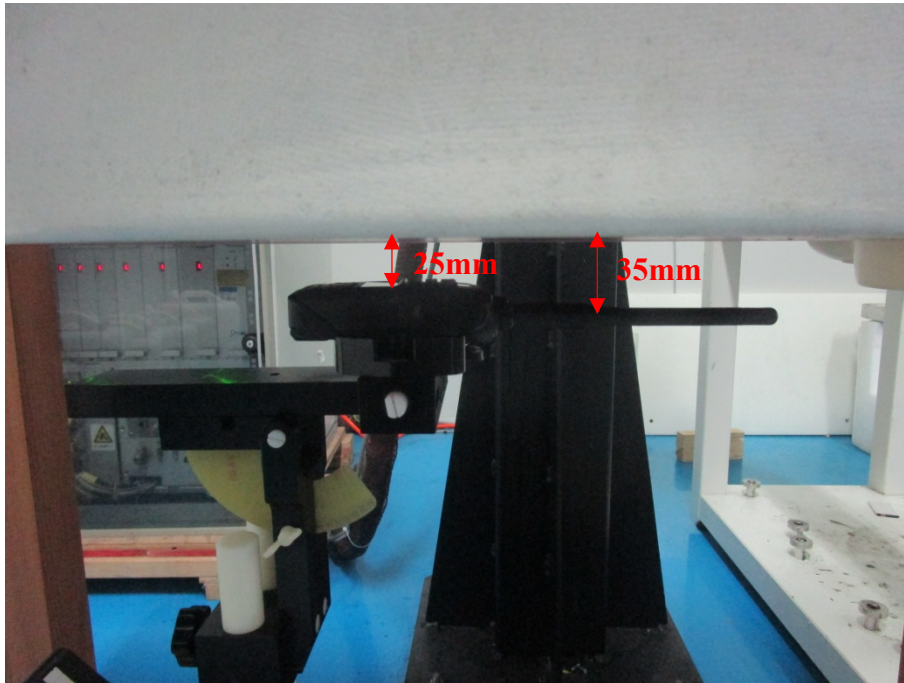
APPENDIX B EUT TEST POSITION PHOTOS

Liquid depth \geq 15cm



Antenna 1:

Face Up Setup Photo(25mm)

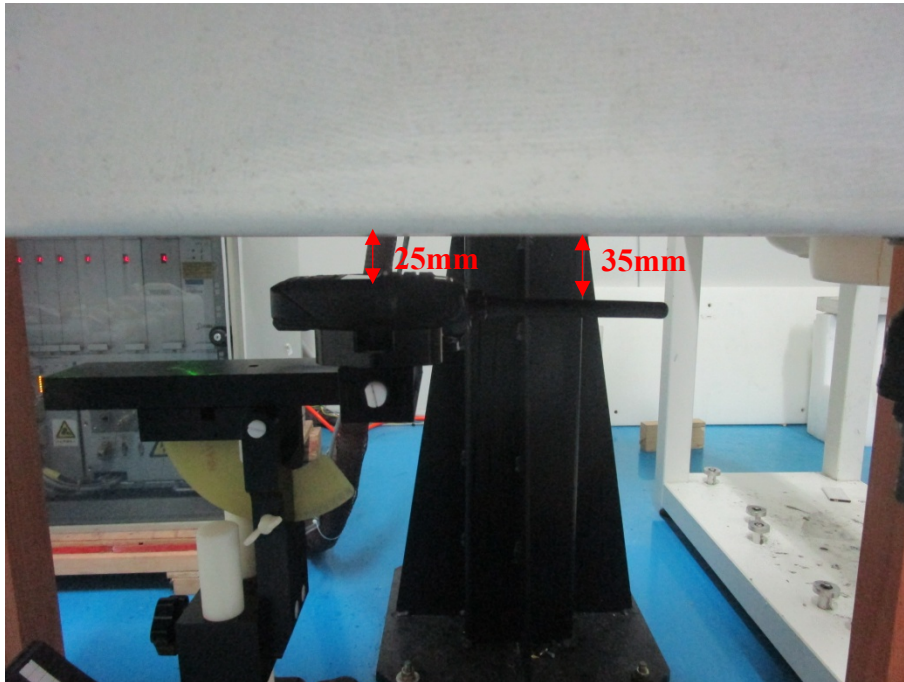


Body Worn Back Setup Photo(0mm)



Antenna 2 ~ 3:

Face Up Setup Photo(25mm)



Body Worn Back Setup Photo(0mm)



Antenna 4:

Face Up Setup Photo(25mm)



Body Worn Back Setup Photo(0mm)

