



SAR EVALUATION REPORT

For

Hytera Communications Corporation Limited

Hytera Tower, Hi-Tech Industrial Park North, 9108# Beihuan Road, Nanshan District, Shenzhen, 518057 China

FCC ID: YAMHP7XXUVS

Report Type: Original Report	Product Type: Digital Portable Radio
Report Number: DG2210727-31354E-20A	
Report Date: 2021-09-13	
Reviewed By: SAR Engineer	Brave Lu
Prepared By: Bay Area Compliance Laboratories Corp. (Dongguan) No.12, Pulong East 1 st Road, Tangxia Town, Dongguan, Guangdong, China Tel: +86-769-86858888 Fax: +86-769-86858891 www.baclcorp.com.cn	

Note: This test report is prepared for the customer shown above and for the device described herein. It may not be duplicated or used in part without prior written consent from Bay Area Compliance Laboratories Corp. (Dongguan). This report must not be used by the customer to claim product certification, approval, or endorsement by A2LA* or any agency of the Federal Government. * This report may contain data that are not covered by the A2LA accreditation and are marked with an asterisk "**".

Attestation of Test Results				
EUT Information	EUT Description	Digital Portable Radio		
	Tested Models	HP782 Uv, HP702 Uv		
	Multiple Models	HP785 Uv, HP786 Uv, HP788 Uv, HP705 Uv, HP706 Uv, HP708 Uv, HDP782 Uv, HDP785 Uv, HDP786 Uv, HDP788 Uv, HDP702 Uv, HDP705 Uv, HDP706 Uv, HDP708 Uv HP782 U1, HP785 U1, HP786 U1, HP788 U1, HP702 U1, HP705 U1, HP706 U1, HP708 U1, HDP782 U1, HDP785 U1, HDP786 U1, HDP788 U1, HDP702 U1, HDP705 U1, HDP706 U1, HDP708 U1		
	FCC ID	YAMHP7XXUVS		
	Serial Number	DG2210727-31354E-SA-S1(HP782 Uv) DG2210727-31354E-SA-S2(HP702 Uv)		
	Test Date	2021-07-28 ~ 2021-07-29		
	Model	Tested Model	Max. SAR Level(s) Reported(W/kg)	
PTT(350-470MHz)	HP782 Uv	1g Head SAR(Face Up)	4.17	8.0 (W/kg)
		1g Body SAR(Body Back)	4.80	
	HP702 Uv	1g Head SAR(Face Up)	4.46	
		1g Body SAR(Body Back)	5.27	
Simultaneous	HP782 Uv	1g Head SAR(Face Up)	4.21	
		1g Body SAR(Body Back)	5.01	
	HP702 Uv	1g Head SAR(Face Up)	4.50	
		1g Body SAR(Body Back)	5.48	
Applicable Standards	FCC 47 CFR part 2.1093 Radiofrequency radiation exposure evaluation: portable devices			
	RF Exposure Procedures: TCB Workshop April 2019			
	IEEE1528:2013 IEEE Recommended Practice for Determining the Peak Spatial-Average Specific Absorption Rate (SAR) in the Human Head from Wireless Communications Devices: Measurement Techniques			
	IEC 62209-1:2016 Measurement procedure for the assessment of specific absorption rate of human exposure to radio frequency fields from hand-held and body-mounted wireless communication devices – Part 1: Devices used next to the ear (Frequency range of 300 MHz to 6 GHz)			
	KDB procedures KDB 447498 D01 General RF Exposure Guidance v06 KDB 865664 D01 SAR Measurement 100 MHz to 6 GHz v01r04 KDB 865664 D02 RF Exposure Reporting v01r02 KDB 643646 D01 SAR Test for PTT Radios v01r03			
Note: This wireless device has been shown to be capable of compliance for localized specific absorption rate (SAR) for Occupational/Controlled Exposure limits specified in FCC 47 CFR part 2.1093 and has been tested in accordance with the measurement procedures specified in IEEE 1528-2013 and RF exposure KDB procedures. The results and statements contained in this report pertain only to the device(s) evaluated.				

TABLE OF CONTENTS

DOCUMENT REVISION HISTORY 4

EUT DESCRIPTION..... 5
 TECHNICAL SPECIFICATION..... 5

REFERENCE, STANDARDS, AND GUIDELINES 6
 SAR LIMITS..... 6

FACILITIES..... 7

DESCRIPTION OF TEST SYSTEM 8

EQUIPMENT LIST AND CALIBRATION 13
 EQUIPMENTS LIST & CALIBRATION INFORMATION 13

SAR MEASUREMENT SYSTEM VERIFICATION 14
 LIQUID VERIFICATION 14
 SYSTEM ACCURACY VERIFICATION 16
 SAR SYSTEM VALIDATION DATA..... 17

EUT TEST STRATEGY AND METHODOLOGY 19
 TEST POSITIONS FOR DEVICE OPERATING NEXT TO A PERSON’S EAR 19
 CHEEK/TOUCH POSITION 20
 EAR/TILT POSITION 20
 TEST POSITIONS FOR BODY-WORN AND OTHER CONFIGURATIONS..... 21
 TEST DISTANCE FOR SAR EVALUATION..... 21
 SAR EVALUATION PROCEDURE 22

CONDUCTED OUTPUT POWER MEASUREMENT 23
 PROVISION APPLICABLE..... 23
 TEST PROCEDURE..... 23
 MAXIMUM TARGET OUTPUT POWER 23
 TEST RESULTS:..... 24

SAR MEASUREMENT RESULTS 29
 SAR TEST DATA 29
 TEST RESULT:..... 30

SAR SIMULTANEOUS TRANSMISSION DESCRIPTION 34

SAR MEASUREMENT VARIABILITY 35

SAR PLOTS..... 36

APPENDIX A MEASUREMENT UNCERTAINTY 37

APPENDIX B EUT TEST POSITION PHOTOS..... 39

APPENDIX C CALIBRATION CERTIFICATES..... 40

DOCUMENT REVISION HISTORY

Revision Number	Report Number	Description of Revision	Date of Revision
1.0	DG2210727-31354E-20A	Original Report	2021-09-13

EUT DESCRIPTION

The *Hytera Communications Corporation Limited's* product, model number: **HP782 Uv, HP702 Uv** in this report is a **Digital Portable Radio**.

Notes: Models **HP782 Uv, HP702 Uv** were selected for fully testing, the detailed information about the difference between the multiple models **HP785 Uv, HP786 Uv, HP788 Uv, HP705 Uv, HP706 Uv, HP708 Uv, HDP782 Uv, HDP785 Uv, HDP786 Uv, HDP788 Uv, HDP702 Uv, HDP705 Uv, HDP706 Uv, HDP708 Uv, HP782 U1, HP785 U1, HP786 U1, HP788 U1, HP702 U1, HP705 U1, HP706 U1, HP708 U1, HDP782 U1, HDP785 U1, HDP786 U1, HDP788 U1, HDP702 U1, HDP705 U1, HDP706 U1, HDP708 U1** and models **HP782 Uv, HP702 Uv** can be referred to the declaration letter which was stated and guaranteed by the manufacturer.

* All measurement and test data in this report was gathered from production sample serial number: **DG2210727-31354E-SA-S1(HP782 Uv)**
DG2210727-31354E-SA-S2(HP702 Uv) (Assigned by **BACL, Dongguan**). The EUT supplied by the applicant was received on 2021-07-27.

Technical Specification

Device Type:	Portable	
Exposure Category:	Occupational/Controlled Exposure	
Antenna Type(s):	External Antenna for PTT Internal Antenna for Bluetooth	
Body-Worn Accessories:	Belt Clip	
Face-Head Accessories:	None	
Operation Mode :	PTT_FM, PTT_4FSK and Bluetooth	
Frequency Band:	PTT_FM/PTT_4FSK: 350-470 MHz Bluetooth:2402-2480 MHz	
Conducted RF Power:	HP782 Uv	HP702 Uv
	PTT_FM/PTT_4FSK:36.69dBm Bluetooth:6.68dBm BLE: 6.37dBm	PTT_FM/PTT_4FSK:36.68dBm Bluetooth: 6.65dBm BLE: 6.38 dBm
Power Source:	7.7 VDC Rechargeable Battery	
Normal Operation:	Face Up and Body-worn	

REFERENCE, STANDARDS, AND GUIDELINES

FCC:

The Report and Order requires routine SAR evaluation prior to equipment authorization of portable transmitter devices, including portable telephones. For consumer products, ANSI/IEEE standard C95.1-1992 [6], limit the whole-body-averaged SAR to 0.4 and 0.08 W/kg for the controlled and uncontrolled environments. According to the Supplement C of OET Bulletin 65 “Evaluating Compliance with FCC Guide-lines for Human Exposure to Radio frequency Electromagnetic Fields”, released on Jun 29, 2001 by the FCC, the device should be evaluated at maximum output power (radiated from the antenna) under “worst-case” conditions for normal or intended use, incorporating normal antenna operating positions, device peak performance frequencies and positions for maximum RF energy coupling.

This report describes the methodology and results of experiments performed on wireless data terminal. The objective was to determine if there is RF radiation and if radiation is found, what is the extent of radiation with respect to safety limits. SAR (Specific Absorption Rate) is the measure of RF exposure determined by the amount of RF energy absorbed by human body (or its parts) – to determine how the RF energy couples to the body or head which is a primary health concern for body worn devices. The limit below which the exposure to RF is considered safe by regulatory bodies in North America.

SAR Limits

FCC/IC Limit

EXPOSURE LIMITS	SAR (W/kg)	
	(General Population / Uncontrolled Exposure Environment)	(Occupational / Controlled Exposure Environment)
Spatial Average (averaged over the whole body)	0.08	0.4
Spatial Peak (averaged over any 1 g of tissue)	1.60	8.0
Spatial Peak (hands/wrists/feet/ankles averaged over 10 g)	4.0	20.0

Population/Uncontrolled Environments are defined as locations where there is the exposure of individual who have no knowledge or control of their exposure.

Occupational/Controlled Environments are defined as locations where there is exposure that may be incurred by people who are aware of the potential for exposure (i.e. as a result of employment or occupation).

FACILITIES

The Test site used by Bay Area Compliance Laboratories Corp. (Dongguan) to collect test data is located on the No.12, Pulong East 1st Road, Tangxia Town, Dongguan, Guangdong, China.

The test site has been approved by the FCC under the KDB 974614 D01 and is listed in the FCC Public Access Link (PAL) database, FCC Registration No. : 897218,the FCC Designation No. : CN1220.

The lab has been recognized by Innovation, Science and Economic Development Canada to test to Canadian radio equipment requirements, the CAB identifier : CN0022.

The test sites and measurement facilities used to collect data are located at:

<input checked="" type="checkbox"/> SAR Lab 1	<input type="checkbox"/> SAR Lab 2
---	------------------------------------

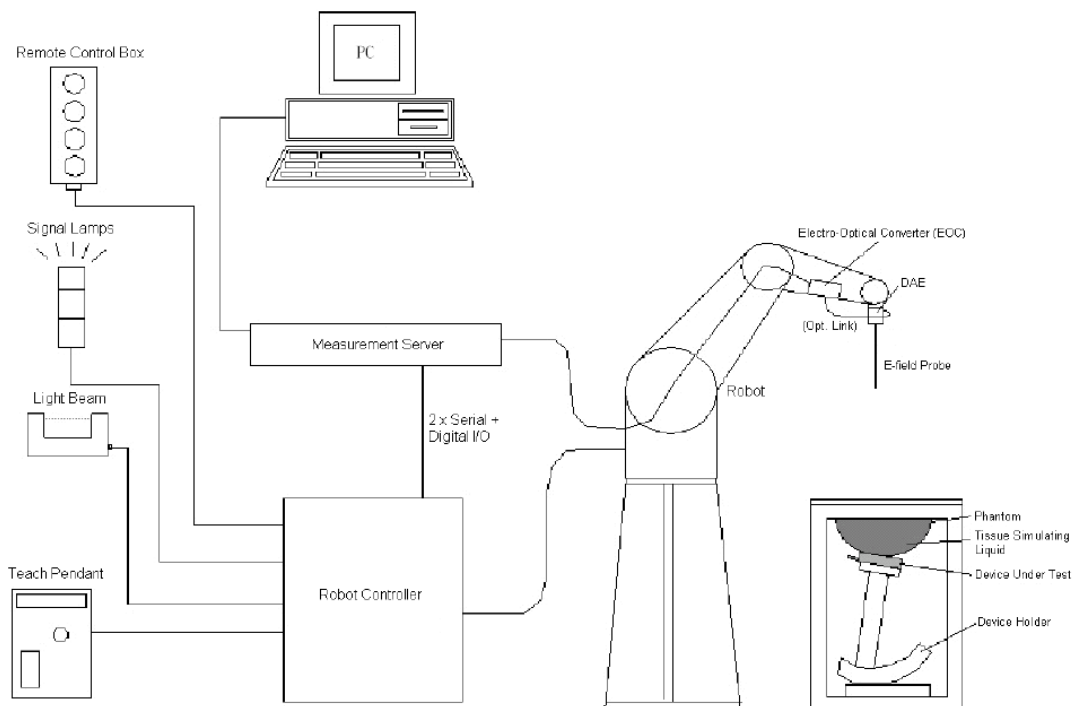
DESCRIPTION OF TEST SYSTEM

These measurements were performed with the automated near-field scanning system DASY5 from Schmid & Partner Engineering AG (SPEAG) which is the Fifth generation of the system shown in the figure hereinafter:



DASY5 System Description

The DASY5 system for performing compliance tests consists of the following items:



- A standard high precision 6-axis robot with controller, teach pendant and software. An arm extension for accommodating the data acquisition electronics (DAE).
- An isotropic field probe optimized and calibrated for the targeted measurement.
- A data acquisition electronics (DAE) which performs the signal application, signal multiplexing, AD-conversion, offset measurements, mechanical surface detection, collision detection, etc. The unit is battery powered with standard or rechargeable batteries. The signal is optically transmitted to the EOC.
- The Electro-optical converter (EOC) performs the conversion from optical to electrical signals for the digital communication to the DAE. To use optical surface detection, a special version of the EOC is required. The EOC signal is transmitted to the measurement server.
- The function of the measurement server is to perform the time critical tasks such as signal filtering, control of the robot operation and fast movement interrupts.
- The Light Beam used is for probe alignment. This improves the (absolute) accuracy of the probe positioning.
- A computer running Win7 professional operating system and the DASY52 software.
- Remote control and teach pendant as well as additional circuitry for robot safety such as warning lamps, etc.
- The phantom, the device holder and other accessories according to the targeted measurement.

DASY5 Measurement Server

The DASY5 measurement server is based on a PC/104 CPU board with a 400MHz Intel ULV Celeron, 128MB chip-disk and 128MB RAM. The necessary circuits for communication with the DAE4 (or DAE3) electronics box, as well as the 16 bit AD-converter system for optical detection and digital I/O interface are contained on the DASY5 I/O board, which is directly connected to the PC/104 bus of the CPU board.



The measurement server performs all real-time data evaluation of field measurements and surface detection, controls robot movements and handles safety operation. The PC operating system cannot interfere with these time critical processes. All connections are supervised by a watchdog, and disconnection of any of the cables to the measurement server will automatically disarm the robot and disable all program-controlled robot movements. Furthermore, the measurement server is equipped with an expansion port which is reserved for future applications. Please note that this expansion port does not have a standardized point out, and therefore only devices provided by SPEAG can be connected. Devices from any other supplier could seriously damage the measurement server.

Data Acquisition Electronics

The data acquisition electronics (DAE4) consist of a highly sensitive electrometer-grade preamplifier with auto-zeroing, a channel and gain-switching multiplexer, a fast 16 bit AD-converter and a command decoder with a control logic unit. Transmission to the measurement server is accomplished through an optical downlink for data and status information, as well as an optical uplink for commands and the clock.

The mechanical probe mounting device includes two different sensor systems for frontal and sideways probe contacts. They are used for mechanical surface detection and probe collision detection.

The input impedance of both the DAE4 as well as of the DAE3 box is 200M Ω ; the inputs are symmetrical and floating. Common mode rejection is above 80 dB.

ES3DV2 E-Field Probes

Frequency	10 MHz to > 4 GHz Linearity: ± 0.2 dB (30 MHz to 4 GHz)
Directivity	± 0.2 dB in TSL (rotation around probe axis) ± 0.3 dB in TSL (rotation normal to probe axis)
Dynamic Range	5 µW/g to > 100 mW/g Linearity: ± 0.2 dB (noise: typically < 1 µW/g)
Dimensions	Overall length: 337 mm (Tip: 10 mm) Tip diameter: 4 mm (Body: 10 mm) Typical distance from probe tip to dipole centers: 4.0 mm
Application	General dosimetry up to 4 GHz Dosimetry in strong gradient fields Compliance tests of mobile phones
Compatibility	DASY3, DASY4, DASY52 SAR and higher, EASY4/MRI

Calibration Frequency Points for ES3DV2 E-Field Probes SN: 3019 Calibrated: 2020/11/16

Calibration Frequency Point(MHz)	Frequency Range(MHz)		Conversion Factor		
	From	To	X	Y	Z
150 Head	100	200	7.70	7.70	7.70
150 Body	100	200	7.38	7.38	7.38
450 Head	350	550	7.02	7.02	7.02
450 Body	350	550	6.90	6.90	6.90

Robots

The DASY5 system uses the high precision industrial robot. The robot offers the same features important for our application:

- High precision (repeatability 0.02mm)
- High reliability (industrial design)
- Low maintenance costs (virtually maintenance free due to direct drive gears; no belt drives)
- Jerk-free straight movements (brushless synchrony motors; no stepper motors)
- Low ELF interference (motor control fields shielded via the closed metallic construction shields)

The above mentioned robots are controlled by the Staubli CS8c robot controllers. All information regarding the use and maintenance of the robot arm and the robot controller is contained on the CDs delivered along with the robot. Paper manuals are available upon request direct from Staubli.

Area Scans

Area scans are defined prior to the measurement process being executed with a user defined variable spacing between each measurement point (integral) allowing low uncertainty measurements to be conducted. Scans defined for FCC applications utilize a 15mm 2 step integral, with 1.5mm interpolation used to locate the peak SAR area used for zoom scan assessments.

Where the system identifies multiple SAR peaks (which are within 25% of peak value) the system will provide the user with the option of assessing each peak location individually for zoom scan averaging.

Zoom Scan (Cube Scan Averaging)

The averaging zoom scan volume utilized in the DASY5 software is in the shape of a cube and the side dimension of a 1 g or 10 g mass is dependent on the density of the liquid representing the simulated tissue. A density of 1000 kg/m^3 is used to represent the head and body tissue density and not the phantom liquid density, in order to be consistent with the definition of the liquid dielectric properties, i.e. the side length of the 1g cube is 10mm, with the side length of the 10g cube is 21.5mm.

When the cube intersects with the surface of the phantom, it is oriented so that 3 vertices touch the surface of the shell or the center of a face is tangent to the surface. The face of the cube closest to the surface is modified in order to conform to the tangent surface.

The zoom scan integer steps can be user defined so as to reduce uncertainty, but normal practice for typical test applications (including FCC) utilize a physical step of $7 \times 7 \times 7$ (5mmx5mmx5mm) providing a volume of 30 mm in the X & Y & Z axis.

Tissue Dielectric Parameters for Head and Body Phantoms

The head tissue dielectric parameters recommended by the IEC 62209-1:2016

Recommended Tissue Dielectric Parameters for Head liquid

Table A.3 – Dielectric properties of the head tissue-equivalent liquid

Frequency MHz	Relative permittivity ϵ_r	Conductivity (σ) S/m
300	45,3	0,87
450	43,5	0,87
<i>750</i>	<i>41,9</i>	<i>0,89</i>
835	41,5	0,90
900	41,5	0,97
1 450	40,5	1,20
<i>1 500</i>	<i>40,4</i>	<i>1,23</i>
<i>1 640</i>	<i>40,2</i>	<i>1,31</i>
<i>1 750</i>	<i>40,1</i>	<i>1,37</i>
1 800	40,0	1,40
1 900	40,0	1,40
2 000	40,0	1,40
<i>2 100</i>	<i>39,8</i>	<i>1,49</i>
<i>2 300</i>	<i>39,5</i>	<i>1,67</i>
2 450	39,2	1,80
<i>2 600</i>	<i>39,0</i>	<i>1,96</i>
3 000	38,5	2,40
<i>3 500</i>	<i>37,9</i>	<i>2,91</i>
<i>4 000</i>	<i>37,4</i>	<i>3,43</i>
<i>4 500</i>	<i>36,8</i>	<i>3,94</i>
<i>5 000</i>	<i>36,2</i>	<i>4,45</i>
<i>5 200</i>	<i>36,0</i>	<i>4,66</i>
<i>5 400</i>	<i>35,8</i>	<i>4,86</i>
<i>5 600</i>	<i>35,5</i>	<i>5,07</i>
<i>5 800</i>	<i>35,3</i>	<i>5,27</i>
6 000	35,1	5,48

NOTE For convenience, permittivity and conductivity values at those frequencies which are not part of the original data provided by Drossos et al. [33] or the extension to 5 800 MHz are provided (i.e. the values shown *in italics*). These values were linearly interpolated between the values in this table that are immediately above and below these values, except the values at 6 000 MHz that were linearly extrapolated from the values at 3 000 MHz and 5 800 MHz.

Note:

- 1, Effective February 19, 2019, FCC has permitted the use of single head-tissue simulating liquid specified in IEC 62209-1 for all SAR tests.
- 2, Mix and Match of traditional FCC SAR TSLs and IEC 62209-1 TSL in a single application is not permitted TSL can be changed in a Permissive Change.
- 3, If SAR increases and original SAR > 1.2 W/kg, additional SAR measurements will be required IEC 62209-1 TSL is an alternative, not mandatory at this time.
- 4, If FCC parameters are used, $\pm 5\%$ tolerance. If IEC parameters, $\pm 10\%$.
- 5, In this case, IEC parameters applied, the tolerance is $\pm 10\%$.

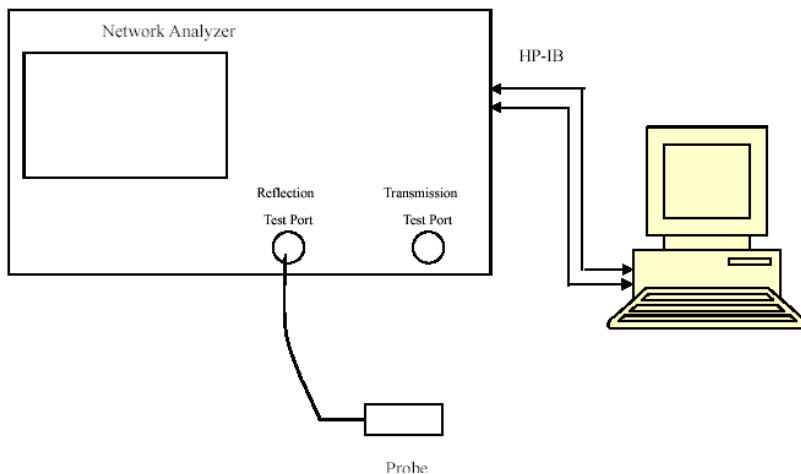
EQUIPMENT LIST AND CALIBRATION

Equipments List & Calibration Information

Equipment	Model	S/N	Calibration Date	Calibration Due Date
DASY5 Test Software	DASY52.10	N/A	NCR	NCR
DASY5 Measurement Server	DASY5 4.5.12	1470	NCR	NCR
Data Acquisition Electronics	DAE4	772	2020/11/23	2021/11/22
E-Field Probe	ES3DV2	3019	2020/11/16	2021/11/15
Dipole, 450MHz	D450V3	1096	2019/11/27	2022/11/27
Mounting Device	MD4HHTV5	BJPCTC0152	NCR	NCR
Oval Flat Phantom	ELI V8.0	2051	NCR	NCR
Simulated Tissue 450 MHz	TS-450	2009045001	Each Time	/
Network Analyzer	8753C	3033A02857	2020/9/12	2021/9/11
Dielectric assessment kit	1253	SM DAK 040 CA	NCR	NCR
synthesized signal generator	8665B	3438a00584	2020/9/12	2021/9/11
Power Meter	E4419B	MY45103907	2020/9/12	2021/9/11
Power Amplifier	ZVA-213-S+	SN054 201245	NCR	NCR
Directional Coupler	488Z	441490	NCR	NCR
Attenuator	20dB, 100W	53-20-34	NCR	NCR
Attenuator	6dB, 150W	769-6	NCR	NCR

SAR MEASUREMENT SYSTEM VERIFICATION

Liquid Verification



Liquid Verification Setup Block Diagram

Liquid Verification Results

Frequency (MHz)	Liquid Type	Liquid Parameter		Target Value		Delta (%)		Tolerance (%)
		ϵ_r	σ (S/m)	ϵ_r	σ (S/m)	$\Delta\epsilon_r$	$\Delta\sigma$ (S/m)	
350.0125	Simulated Tissue 450 MHz	45.844	0.835	44.7	0.87	2.56	-4.02	±10
362.5125	Simulated Tissue 450 MHz	45.418	0.843	44.55	0.87	1.95	-3.1	±10
375.0125	Simulated Tissue 450 MHz	44.803	0.852	44.4	0.87	0.91	-2.07	±10
387.4875	Simulated Tissue 450 MHz	44.395	0.859	44.25	0.87	0.33	-1.26	±10
399.9875	Simulated Tissue 450 MHz	43.970	0.863	44.1	0.87	-0.29	-0.8	±10
400.0125	Simulated Tissue 450 MHz	43.622	0.867	44.1	0.87	-1.08	-0.34	±10
417.5125	Simulated Tissue 450 MHz	43.186	0.871	43.89	0.87	-1.6	0.11	±10
435	Simulated Tissue 450 MHz	42.834	0.874	43.68	0.87	-1.94	0.46	±10
450	Simulated Tissue 450 MHz	42.428	0.876	43.5	0.87	-2.46	0.69	±10
452.4875	Simulated Tissue 450 MHz	42.123	0.888	43.49	0.87	-3.14	2.07	±10
469.9875	Simulated Tissue 450 MHz	41.877	0.895	43.39	0.87	-3.49	2.87	±10

*Liquid Verification above was performed on 2021/07/28.

Frequency (MHz)	Liquid Type	Liquid Parameter		Target Value		Delta (%)		Tolerance (%)
		ϵ_r	σ (S/m)	ϵ_r	σ (S/m)	$\Delta\epsilon_r$	$\Delta\sigma$ (S/m)	
350.0125	Simulated Tissue 450 MHz	45.896	0.841	44.7	0.87	2.68	-3.33	±10
362.5125	Simulated Tissue 450 MHz	45.757	0.846	44.55	0.87	2.71	-2.76	±10
375.0125	Simulated Tissue 450 MHz	45.359	0.852	44.4	0.87	2.16	-2.07	±10
387.4875	Simulated Tissue 450 MHz	45.168	0.858	44.25	0.87	2.07	-1.38	±10
399.9875	Simulated Tissue 450 MHz	44.798	0.861	44.1	0.87	1.58	-1.03	±10
400.0125	Simulated Tissue 450 MHz	44.424	0.865	44.1	0.87	0.73	-0.57	±10
417.5125	Simulated Tissue 450 MHz	44.065	0.872	43.89	0.87	0.4	0.23	±10
435	Simulated Tissue 450 MHz	43.978	0.876	43.68	0.87	0.68	0.69	±10
450	Simulated Tissue 450 MHz	43.914	0.882	43.5	0.87	0.95	1.38	±10
452.4875	Simulated Tissue 450 MHz	43.782	0.893	43.49	0.87	0.67	2.64	±10
469.9875	Simulated Tissue 450 MHz	43.416	0.901	43.39	0.87	0.06	3.56	±10

*Liquid Verification above was performed on 2021/07/29.

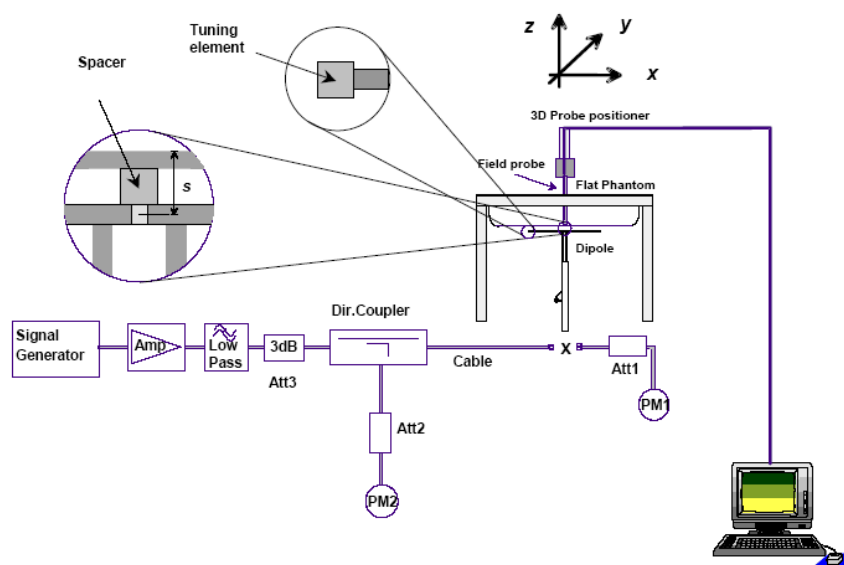
System Accuracy Verification

Prior to the assessment, the system validation kit was used to test whether the system was operating within its specifications of $\pm 10\%$. The validation results are tabulated below. And also the corresponding SAR plot is attached as well in the SAR plots files.

The spacing distances in the **System Verification Setup Block Diagram** is given by the following:

- a) $s = 15 \text{ mm} \pm 0,2 \text{ mm}$ for $300 \text{ MHz} \leq f \leq 1 \text{ 000 MHz}$;
- b) $s = 10 \text{ mm} \pm 0,2 \text{ mm}$ for $1 \text{ 000 MHz} < f \leq 3 \text{ 000 MHz}$;
- c) $s = 10 \text{ mm} \pm 0,2 \text{ mm}$ for $3 \text{ 000 MHz} < f \leq 6 \text{ 000 MHz}$.
- d) $s = 0 \text{ mm}$ for $f = 150 \text{ MHz}$ (Loop Antenna).

System Verification Setup Block Diagram



System Accuracy Check Results

Date	Frequency Band	Liquid Type	Input Power (mW)	Measured SAR (W/kg)	Normalized to 1W (W/kg)	Target Value (W/kg)	Delta (%)	Tolerance (%)
2021/07/28	450 MHz	Simulated Tissue 450 MHz	100	1g 0.468	4.68	4.53	3.31	± 10
2021/07/29	450 MHz	Simulated Tissue 450 MHz	100	1g 0.472	4.72	4.53	4.19	± 10

*The SAR values above are normalized to 1 Watt forward power.

SAR SYSTEM VALIDATION DATA

System Performance 450 MHz was performed on 2021/07/28

DUT: Dipole 450 MHz; Type: D450V3; Serial: 1096

Communication System: CW; Frequency: 450 MHz; Duty Cycle: 1:1

Medium parameters used: $f = 450 \text{ MHz}$; $\sigma = 0.876 \text{ S/m}$; $\epsilon_r = 42.428$; $\rho = 1000 \text{ kg/m}^3$

Phantom section: Flat Section

DASY5 Configuration:

- Probe: ES3DV2 - SN3019; ConvF(7.02, 7.02, 7.02) @ 450 MHz; Calibrated: 2020/11/16
- Sensor-Surface: 4mm (Mechanical Surface Detection)
- Electronics: DAE4 Sn772; Calibrated: 2020/11/23
- Phantom: ELI v8.0; Type: QDOVA002AA; Serial: TP:2051
- Measurement SW: DASY52, Version 52.10 (2); SEMCAD X Version 14.6.12 (7470)

Area Scan (41x201x1): Interpolated grid: $dx=1.500 \text{ mm}$, $dy=1.500 \text{ mm}$

Maximum value of SAR (interpolated) = 0.445 W/kg

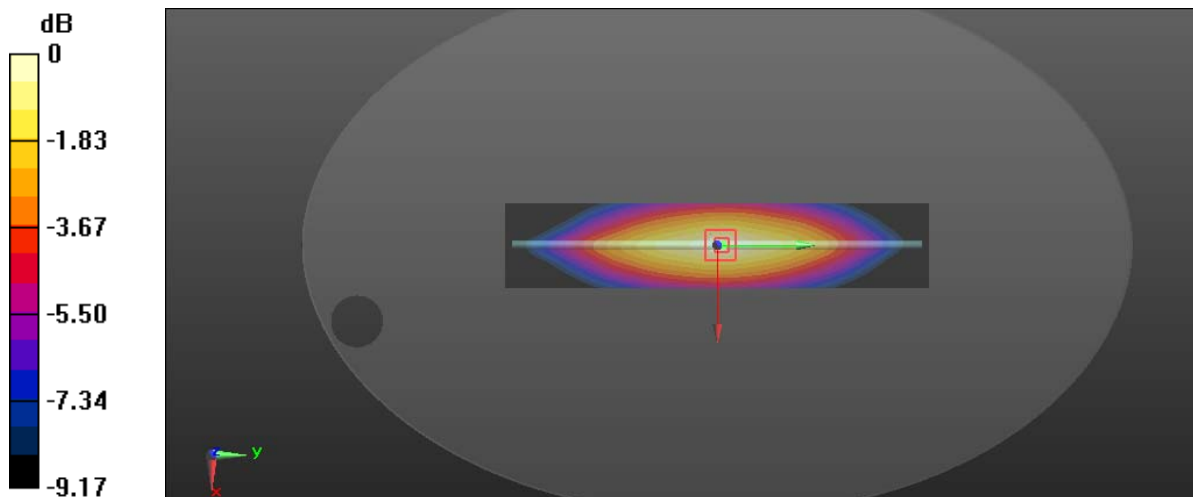
Zoom Scan (5x5x7)/Cube 0: Measurement grid: $dx=8\text{mm}$, $dy=8\text{mm}$, $dz=5\text{mm}$

Reference Value = 24.12 V/m; Power Drift = -0.16 dB

Peak SAR (extrapolated) = 0.467 W/kg

SAR(1 g) = 0.468 W/kg; SAR(10 g) = 0.317 W/kg

Maximum value of SAR (measured) = 0.462 W/kg



0 dB = 0.462 W/kg = -3.35 dBW/kg

System Performance 450 MHz was performed on 2021/07/29

DUT: Dipole 450 MHz; Type: D450V3; Serial: 1096

Communication System: CW; Frequency: 450 MHz; Duty Cycle: 1:1

Medium parameters used: $f = 450 \text{ MHz}$; $\sigma = 0.882 \text{ S/m}$; $\epsilon_r = 43.914$; $\rho = 1000 \text{ kg/m}^3$

Phantom section: Flat Section

DASY5 Configuration:

- Probe: ES3DV2 - SN3019; ConvF(7.02, 7.02, 7.02) @ 450 MHz; Calibrated: 2020/11/16
- Sensor-Surface: 4mm (Mechanical Surface Detection)
- Electronics: DAE4 Sn772; Calibrated: 2020/11/23
- Phantom: ELI v8.0; Type: QDOVA002AA; Serial: TP:2051
- Measurement SW: DASY52, Version 52.10 (2); SEMCAD X Version 14.6.12 (7470)

Area Scan (61x201x1): Interpolated grid: $dx=1.500 \text{ mm}$, $dy=1.500 \text{ mm}$

Maximum value of SAR (interpolated) = 0.433 W/kg

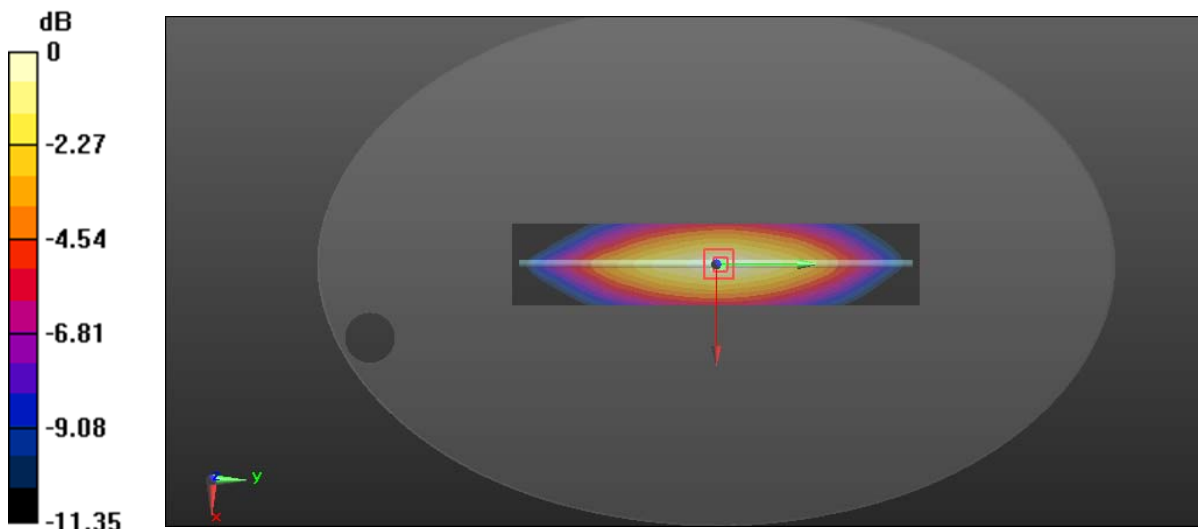
Zoom Scan (5x5x7)/Cube 0: Measurement grid: $dx=8\text{mm}$, $dy=8\text{mm}$, $dz=5\text{mm}$

Reference Value = 24.32 V/m; Power Drift = -0.12 dB

Peak SAR (extrapolated) = 0.442 W/kg

SAR(1 g) = 0.472 W/kg; SAR(10 g) = 0.321 W/kg

Maximum value of SAR (measured) = 0.428 W/kg



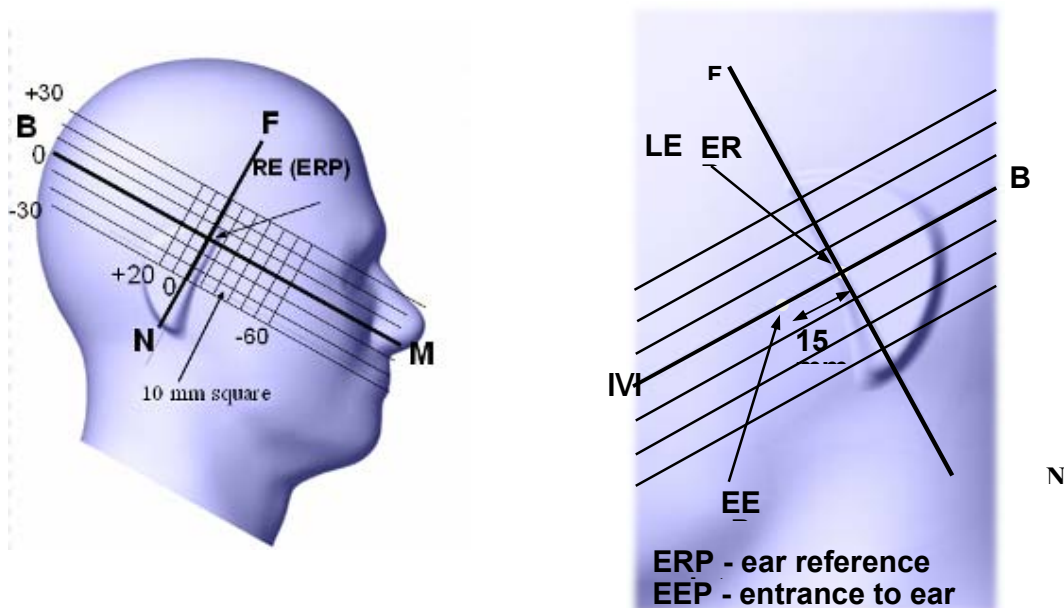
$0 \text{ dB} = 0.428 \text{ W/kg} = -3.69 \text{ dBW/kg}$

EUT TEST STRATEGY AND METHODOLOGY

Test Positions for Device Operating Next to a Person’s Ear

This category includes most wireless handsets with fixed, retractable or internal antennas located toward the top half of the device, with or without a foldout, sliding or similar keypad cover. The handset should have its earpiece located within the upper ¼ of the device, either along the centerline or off-centered, as perceived by its users. This type of handset should be positioned in a normal operating position with the “test device reference point” located along the “vertical centerline” on the front of the device aligned to the “ear reference point”. The “test device reference point” should be located at the same level as the center of the earpiece region. The “vertical centerline” should bisect the front surface of the handset at its top and bottom edges. A “ear reference point” is located on the outer surface of the head phantom on each ear spacer. It is located 1.5 cm above the center of the ear canal entrance in the “phantom reference plane” defined by the three lines joining the center of each “ear reference point” (left and right) and the tip of the mouth.

A handset should be initially positioned with the earpiece region pressed against the ear spacer of a head phantom. For the SCC-34/SC-2 head phantom, the device should be positioned parallel to the “N-F” line defined along the base of the ear spacer that contains the “ear reference point”. For interim head phantoms, the device should be positioned parallel to the cheek for maximum RF energy coupling. The “test device reference point” is aligned to the “ear reference point” on the head phantom and the “vertical centerline” is aligned to the “phantom reference plane”. This is called the “initial ear position”. While maintaining these three alignments, the body of the handset is gradually adjusted to each of the following positions for evaluating SAR:



Cheek/Touch Position

The device is brought toward the mouth of the head phantom by pivoting against the “ear reference point” or along the “N-F” line for the SCC-34/SC-2 head phantom.

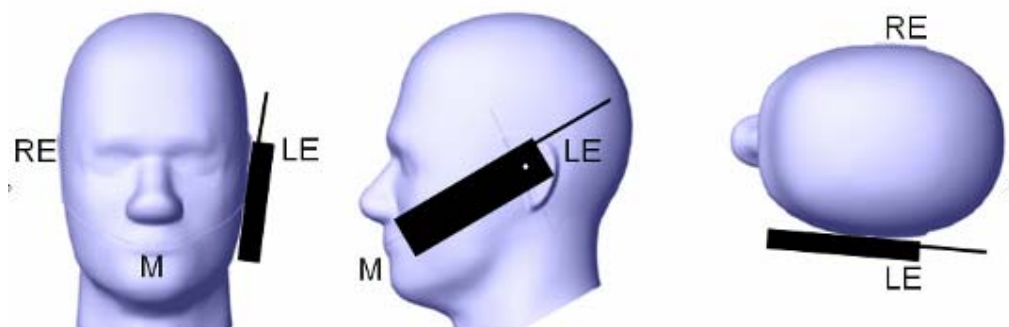
This test position is established:

When any point on the display, keypad or mouthpiece portions of the handset is in contact with the phantom.

(or) When any portion of a foldout, sliding or similar keypad cover opened to its intended self-adjusting normal use position is in contact with the cheek or mouth of the phantom.

For existing head phantoms – when the handset loses contact with the phantom at the pivoting point, rotation should continue until the device touches the cheek of the phantom or breaks its last contact from the ear spacer.

Cheek /Touch Position



Ear/Tilt Position

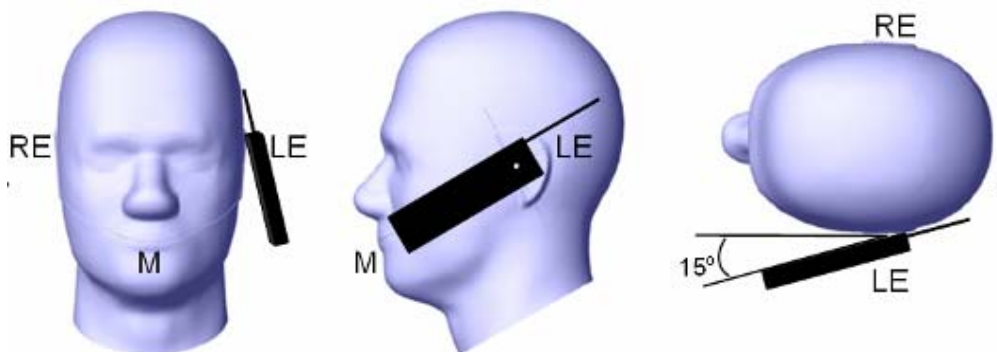
With the handset aligned in the “Cheek/Touch Position”:

1) If the earpiece of the handset is not in full contact with the phantom’s ear spacer (in the “Cheek/Touch position”) and the peak SAR location for the “Cheek/Touch” position is located at the ear spacer region or corresponds to the earpiece region of the handset, the device should be returned to the “initial ear position” by rotating it away from the mouth until the earpiece is in full contact with the ear spacer.

2) (otherwise) The handset should be moved (translated) away from the cheek perpendicular to the line passes through both “ear reference points” (note: one of these ear reference points may not physically exist on a split head model) for approximate 2-3 cm. While it is in this position, the device handset is tilted away from the mouth with respect to the “test device reference point” until the inside angle between the vertical centerline on the front surface of the phone and the horizontal line passing through the ear reference point is by 15 80°. After the tilt, it is then moved (translated) back toward the head perpendicular to the line passes through both “ear reference points” until the device touches the phantom or the ear spacer. If the antenna touches the head first, the positioning process should be repeated with a tilt angle less than 15° so that the device and its antenna would touch the phantom simultaneously. This test position may require a device holder or positioner to achieve the translation and tilting with acceptable positioning repeatability.

If a device is also designed to transmit with its keypad cover closed for operating in the head position, such positions should also be considered in the SAR evaluation. The device should be tested on the left and right side of the head phantom in the “Cheek/Touch” and “Ear/Tilt” positions. When applicable, each configuration should be tested with the antenna in its fully extended and fully retracted positions. These test configurations should be tested at the high, middle and low frequency channels of each operating mode; for example, AMPS, CDMA, and TDMA. If the SAR measured at the middle channel for each test configuration (left, right, Cheek/Touch, Tilt/Ear, extended and retracted) is at least 2.0 dB lower than the SAR limit, testing at the high and low channels is optional for such test configuration(s). If the transmission band of the test device is less than 10 MHz, testing at the high and low frequency channels is optional.

Ear /Tilt 15° Position



Test positions for body-worn and other configurations

Body-worn operating configurations should be tested with the belt-clips and holsters attached to the device and positioned against a flat phantom in normal use configurations. Devices with a headset output should be tested with a headset connected to the device. When multiple accessories that do not contain metallic components are supplied with the device, the device may be tested with only the accessory that dictates the closest spacing to the body. When multiple accessories that contain metallic components are supplied with the device, the device must be tested with each accessory that contains a unique metallic component. If multiple accessories share an identical metallic component (e.g., the same metallic belt-clip used with different holsters with no other metallic components), only the accessory that dictates the closest spacing to the body must be tested.

Body-worn accessories may not always be supplied or available as options for some devices that are intended to be authorized for body-worn use. A separation distance of 1.5 cm between the back of the device and a flat phantom is recommended for testing body-worn SAR compliance under such circumstances. Other separation distances may be used, but they should not exceed 2.5 cm. In these cases, the device may use body-worn accessories that provide a separation distance greater than that tested for the device provided however that the accessory contains no metallic components.

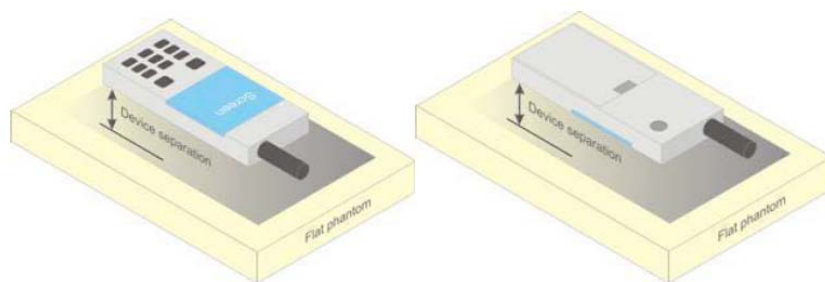


Figure 5 – Test positions for body-worn devices

Test Distance for SAR Evaluation

In this case the DUT(Device Under Test) is set directly against the phantom, the test distance is 0mm for Body Back mode; for Face Up mode the distance is 25mm.

SAR Evaluation Procedure

The evaluation was performed with the following procedure:

Step 1: Measurement of the SAR value at a fixed location above the ear point or central position was used as a reference value for assessing the power drop. The SAR at this point is measured at the start of the test and then again at the end of the testing.

Step 2: The SAR distribution at the exposed side of the head was measured at a distance of 4 mm from the inner surface of the shell. The area covered the entire dimension of the head or radiating structures of the EUT, the horizontal grid spacing was 15 mm x 15 mm, and the SAR distribution was determined by integrated grid of 1.5mm x 1.5mm. Based on these data, the area of the maximum absorption was determined by spline interpolation. The first Area Scan covers the entire dimension of the EUT to ensure that the hotspot was correctly identified.

Step 3: Around this point, a volume of 30 mm x 30 mm x 30 mm was assessed by measuring 7x 7 x 7 points. On the basis of this data set, the spatial peak SAR value was evaluated under the following procedure:

1) The data at the surface were extrapolated, since the center of the dipoles is 1.2 mm away from the tip of the probe and the distance between the surface and the lowest measuring point is 1.3 mm. The extrapolation was based on a least square algorithm. A polynomial of the fourth order was calculated through the points in z-axis. This polynomial was then used to evaluate the points between the surface and the probe tip.

2) The maximum interpolated value was searched with a straightforward algorithm. Around this maximum the SAR values averaged over the spatial volumes (1 g or 10 g) were computed by the 3D-Spline interpolation algorithm. The 3D-Spline is composed of three one dimensional splines with the "Not a knot"-condition (in x, y and z-directions). The volume was integrated with the trapezoidal-algorithm. One thousand points (10 x 10 x 10) were interpolated to calculate the averages.

All neighboring volumes were evaluated until no neighboring volume with a higher average value was found.

Step 4: Re-measurement of the SAR value at the same location as in Step 1. If the value changed by more than 5%, the evaluation was repeated.

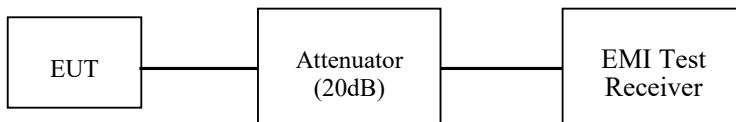
CONDUCTED OUTPUT POWER MEASUREMENT

Provision Applicable

The measured peak output power should be greater and within 5% than EMI measurement.

Test Procedure

The RF output of the transmitter was connected to the input of the EMI Test Receiver through sufficient attenuation.



The EMI Test Receiver setting:

RBW	VBW
100 kHz	300 kHz

Maximum Target Output Power

Mode		Max. tune-up tolerance power limit for Production(dBm)
PTT (350-470MHz)	FM_12.5kHz	36.7
	FM_25kHz	36.7
	4FSK_12.5kHz	36.7
Bluetooth BDR/EDR		7.0
Bluetooth LE		7.0

Test Results:
HP782 Uv:

Test Mode		Antenna	Frequency (MHz)	Output Power(dBm)	Power level
PTT (350-470MHz)	FM 12.5 kHz	Antenna 1 (350-400MHz)	350.0125	36.54	High
			362.5125	36.67	High
			375.0125	36.45	High
			387.4875	36.32	High
			399.9875	36.13	High
		Antenna 2 (400-470MHz)	400.0125	36.23	High
			417.5125	36.44	High
			435	36.65	High
			452.4875	36.58	High
			469.9875	35.41	High
	FM 25 kHz	Antenna 1 (350-400MHz)	350.0125	36.56	High
			362.5125	36.69	High
			375.0125	36.42	High
			387.4875	36.29	High
			399.9875	36.16	High
		Antenna 2 (400-470MHz)	400.0125	36.28	High
			417.5125	36.42	High
			435	36.68	High
			452.4875	36.66	High
			469.9875	35.92	High
	4FSK 12.5 kHz	Antenna 1 (350-400MHz)	350.0125	36.56	High
			362.5125	36.63	High
			375.0125	36.41	High
			387.4875	36.25	High
399.9875			36.10	High	
Antenna 2 (400-470MHz)		400.0125	36.28	High	
		417.5125	36.42	High	
		435	36.63	High	
		452.4875	36.59	High	
		469.9875	35.87	High	

HP702 Uv:

Test Mode		Antenna	Frequency (MHz)	Output Power(dBm)	Power level
PTT (350-470MHz)	FM 12.5 kHz	Antenna 1 (350-400MHz)	350.0125	36.57	High
			362.5125	36.63	High
			375.0125	36.43	High
			387.4875	36.36	High
			399.9875	36.15	High
		Antenna 2 (400-470MHz)	400.0125	36.27	High
			417.5125	36.43	High
			435	36.68	High
			452.4875	36.56	High
			469.9875	35.65	High
	FM 25 kHz	Antenna 1 (350-400MHz)	350.0125	36.54	High
			362.5125	36.65	High
			375.0125	36.48	High
			387.4875	36.27	High
			399.9875	36.13	High
		Antenna 2 (400-470MHz)	400.0125	36.28	High
			417.5125	36.42	High
			435	36.67	High
			452.4875	36.62	High
			469.9875	35.92	High
	4FSK 12.5 kHz	Antenna 1 (350-400MHz)	350.0125	36.57	High
			362.5125	36.64	High
			375.0125	36.38	High
			387.4875	36.24	High
399.9875			36.12	High	
Antenna 2 (400-470MHz)		400.0125	36.26	High	
		417.5125	36.47	High	
		435	36.64	High	
		452.4875	36.63	High	
		469.9875	35.85	High	

Bluetooth:

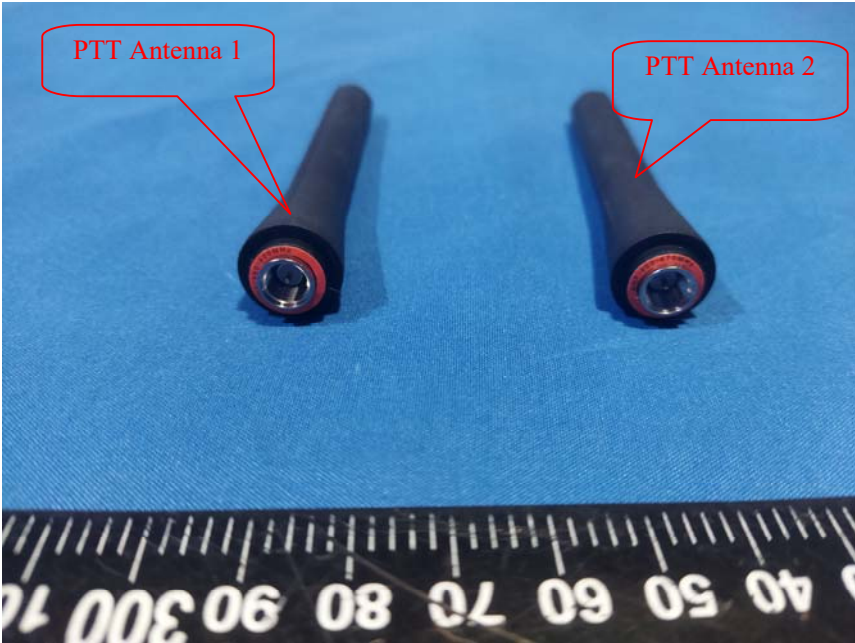
HP782 Uv:

Mode	Channel frequency	RF Output Power (dBm)
BDR(GFSK)	2402	6.38
	2441	6.56
	2480	6.68
EDR($\pi/4$ -DQPSK)	2402	4.65
	2441	5.62
	2480	5.56
EDR(8DPSK)	2402	4.73
	2441	5.70
	2480	5.72
BLE	2402	5.74
	2440	6.36
	2480	6.37

HP702 Uv:

Mode	Channel frequency (MHz)	RF Output Power (dBm)
BDR(GFSK)	2402	6.37
	2441	6.59
	2480	6.65
EDR($\pi/4$ -DQPSK)	2402	4.73
	2441	5.65
	2480	5.68
EDR(8DPSK)	2402	4.73
	2441	5.68
	2480	5.72
BLE	2402	5.73
	2440	6.36
	2480	6.38

Antennas Location:



Standalone SAR test exclusion considerations

Mode	Frequency (MHz)	Pavg (dBm)	Pavg (mW)	Distance (mm)	Calculated value	Threshold (1-g)	SAR Test Exclusion
Bluetooth	2480	7	5.01	0	1.58	3	YES

NOTE:

The 1-g and 10-g SAR test exclusion thresholds for 100 MHz to 6 GHz at test separation distances ≤ 50 mm are determined by:

$$[(\text{max. power of channel, including tune-up tolerance, mW}) / (\text{min. test separation distance, mm})] \cdot$$

$$[\sqrt{f(\text{GHz})}] \leq 3.0 \text{ for 1-g SAR and } \leq 7.5 \text{ for 10-g extremity SAR, where}$$

1. f(GHz) is the RF channel transmit frequency in GHz.

2. Power and distance are rounded to the nearest mW and mm before calculation.

3. The result is rounded to one decimal place for comparison.

4. When the minimum test separation distance is < 5 mm, a distance of 5 mm is applied to determine SAR test Exclusion.

Standalone SAR estimation:

Mode	Frequency (MHz)	Pavg (dBm)	Pavg (mW)	Distance (mm)	Estimated 1-g (W/kg)
BT Face Up	2480	7	5.01	25	0.04
BT Body Back	2480	7	5.01	0	0.21

When standalone SAR test exclusion applies to an antenna that transmits simultaneously with other antennas, the standalone SAR must be estimated according to following to determine simultaneous transmission SAR test exclusion:

$$[(\text{max. power of channel, including tune-up tolerance, mW}) / (\text{min. test separation distance,mm})] \cdot$$

$$[\sqrt{f(\text{GHz})/x}]$$

W/kg for test separation distances ≤50 mm;

where x = 7.5 for 1-g SAR and 18.75 for 10-g SAR.

When the minimum test separation distance is < 5 mm, a distance of 5 mm is applied to determine SAR test Exclusion

SAR MEASUREMENT RESULTS

This page summarizes the results of the performed dosimetric evaluation.

SAR Test Data

Environmental Conditions

Temperature:	22.2-23.6 °C	22.5-23.1 °C
Relative Humidity:	41%	48%
ATM Pressure:	99.8 kPa	100 kPa
Test Date:	2021/07/28	2021/07/29

Testing was performed by Steve Zhou, David Li, Jaime Zong.

Test Result:

HP782 Uv:

ForAntenna 1,Pre-Scan all 5 Channels, the peak SAR located on 362.5125MHz for Face Up mode and Body Back mode. ForAntenna 2,Pre-Scan all 5 Channels, the peak SAR located on 435MHz for Face Up mode and Body Back mode.

Test Mode		Antenna	Frequency (MHz)	Max. Meas. Power (dBm)	Maximum output Power(dBm)	1 g SAR Value(W/kg)				
						Scaled Factor	Meas. SAR	50%	Scaled SAR	Plot
Head Face Up (25 mm)	FM 12.5 kHz	Antenna 1 (350-400MHz)	350.0125	36.54	36.7	1.038	4.68	2.34	2.43	1#
			362.5125	36.67	36.7	1.007	7.86	3.93	3.96	2#
			375.0125	36.45	36.7	1.059	4.95	2.475	2.62	3#
			387.4875	36.32	36.7	1.091	2.73	1.365	1.49	4#
			399.9875	36.13	36.7	1.14	1.89	0.945	1.08	5#
		Antenna 2 (400-470MHz)	400.0125	36.23	36.7	1.114	7.17	3.585	3.99	6#
			417.5125	36.44	36.7	1.062	7.31	3.655	3.88	7#
			435	36.65	36.7	1.012	8.24	4.12	4.17	8#
			452.4875	36.58	36.7	1.028	7.02	3.51	3.61	9#
			469.9875	35.41	36.7	1.346	4.88	2.44	3.28	10#
	FM 25 kHz	Antenna 1 (350-400MHz)	350.0125	36.56	36.7	1.033	3.53	1.765	1.82	11#
			362.5125	36.69	36.7	1.002	8.08	4.04	4.05	12#
			375.0125	36.42	36.7	1.067	5.14	2.57	2.74	13#
			387.4875	36.29	36.7	1.099	2.75	1.375	1.51	14#
			399.9875	36.16	36.7	1.132	1.94	0.97	1.10	15#
		Antenna 2 (400-470MHz)	400.0125	/	/	/	/	/	/	/
			417.5125	/	/	/	/	/	/	/
			435	36.68	36.7	1.005	6.75	3.375	3.39	16#
			452.4875	/	/	/	/	/	/	/
			469.9875	/	/	/	/	/	/	/
	4FSK 12.5 kHz	Antenna 1 (350-400MHz)	350.0125	/	/	/	/	/	/	/
			362.5125	36.63	36.7	1.016	3.97	1.985	2.02	17#
			375.0125	/	/	/	/	/	/	/
			387.4875	/	/	/	/	/	/	/
			399.9875	/	/	/	/	/	/	/
		Antenna 2 (400-470MHz)	400.0125	/	/	/	/	/	/	/
			417.5125	/	/	/	/	/	/	/
			435	36.63	36.7	1.016	3.29	1.645	1.67	18#
452.4875			/	/	/	/	/	/	/	
469.9875			/	/	/	/	/	/	/	

The data above were tested on 2021/07/28.

Test Mode	Antenna	Frequency (MHz)	Max. Meas. Power (dBm)	Maximum output Power(dBm)	1 g SAR Value(W/kg)					
					Scaled Factor	Meas. SAR	50%	Scaled SAR	Plot	
Body Back (0 mm)	FM 12.5 kHz	Antenna 1 (350-400MHz)	350.0125	36.54	36.7	1.038	7.31	3.655	3.79	19#
			362.5125	36.67	36.7	1.007	8.46	4.23	4.26	20#
			375.0125	36.45	36.7	1.059	5.02	2.51	2.66	21#
			387.4875	36.32	36.7	1.091	2.9	1.45	1.58	22#
			399.9875	36.13	36.7	1.14	2.1	1.05	1.20	23#
		Antenna 2 (400-470MHz)	400.0125	36.23	36.7	1.114	7.87	3.935	4.38	24#
			417.5125	36.44	36.7	1.062	8.2	4.1	4.35	25#
			435	36.65	36.7	1.012	9.49	4.745	4.80	26#
			452.4875	36.58	36.7	1.028	9.28	4.64	4.77	27#
			469.9875	35.41	36.7	1.346	5.59	2.795	3.76	28#
	FM 25 kHz	Antenna 1 (350-400MHz)	350.0125	36.56	36.7	1.033	7.47	3.735	3.86	29#
			362.5125	36.69	36.7	1.002	8.52	4.26	4.27	30#
			375.0125	36.42	36.7	1.067	4.89	2.445	2.61	31#
			387.4875	36.29	36.7	1.099	2.87	1.435	1.58	32#
			399.9875	36.16	36.7	1.132	2.08	1.04	1.18	33#
		Antenna 2 (400-470MHz)	400.0125	36.28	36.7	1.102	8.32	4.16	4.58	34#
			417.5125	36.42	36.7	1.067	8	4	4.27	35#
			435	36.68	36.7	1.005	9.13	4.565	4.59	36#
			452.4875	36.66	36.7	1.009	9.03	4.515	4.56	37#
			469.9875	35.92	36.7	1.197	5.16	2.58	3.09	38#
	4FSK 12.5 kHz	Antenna 1 (350-400MHz)	350.0125	/	/	/	/	/	/	/
			362.5125	36.63	36.7	1.016	4.3	2.15	2.18	39#
			375.0125	/	/	/	/	/	/	/
			387.4875	/	/	/	/	/	/	/
			399.9875	/	/	/	/	/	/	/
		Antenna 2 (400-470MHz)	400.0125	/	/	/	/	/	/	/
			417.5125	/	/	/	/	/	/	/
			435	36.63	36.7	1.016	4.86	2.43	2.47	40#
			452.4875	/	/	/	/	/	/	/
			469.9875	/	/	/	/	/	/	/

The data above were tested on 2021/07/28.

Note:

1. When the 1-g SAR is ≤ 3.5 W/kg, testing for other channels are optional.
2. KDB 447498 D01 - A duty factor of 50% should be applied to determine compliance for radios with maximum operating duty factors $\leq 50\%$. The 50% duty factor only applies to exposure conditions where the radio operates with a mechanical PTT button.
3. The whole antenna and radiating structures that may contribute to the measured SAR or influence the SAR distribution has been included in the area scan.

HP702 Uv:

For Antenna 1, Pre-Scan all 5 Channels, the peak SAR located on 362.5125MHz for Face Up mode and Body Back mode. For Antenna 2, Pre-Scan all 5 Channels, the peak SAR located on 452.4875MHz for Face Up mode and Body Back mode.

Test Mode		Antenna	Frequency (MHz)	Max. Meas. Power (dBm)	Maximum output Power(dBm)	1 g SAR Value(W/kg)				
						Scaled Factor	Meas. SAR	50%	Scaled SAR	Plot
Head Face Up (25 mm)	FM 12.5 kHz	Antenna 1 (350-400MHz)	350.0125	36.57	36.7	1.03	4.22	2.11	2.17	41#
			362.5125	36.63	36.7	1.016	7.91	3.955	4.02	42#
			375.0125	36.43	36.7	1.064	5.27	2.635	2.80	43#
			387.4875	36.36	36.7	1.081	2.84	1.42	1.54	44#
			399.9875	36.15	36.7	1.135	1.85	0.925	1.05	45#
		Antenna 2 (400-470MHz)	400.0125	36.27	36.7	1.104	5.32	2.66	2.94	46#
			417.5125	36.43	36.7	1.064	7	3.5	3.72	47#
			435	36.68	36.7	1.005	6.7	3.35	3.37	48#
			452.4875	36.56	36.7	1.033	7.18	3.59	3.71	49#
			469.9875	35.65	36.7	1.274	4.64	2.32	2.96	50#
	FM 25 kHz	Antenna 1 (350-400MHz)	350.0125	/	/	/	/	/	/	/
			362.5125	36.65	36.7	1.012	6.86	3.43	3.47	51#
			375.0125	/	/	/	/	/	/	/
			387.4875	/	/	/	/	/	/	/
			399.9875	/	/	/	/	/	/	/
		Antenna 2 (400-470MHz)	400.0125	36.28	36.7	1.102	6.4	3.2	3.53	52#
			417.5125	36.42	36.7	1.067	6.89	3.445	3.68	53#
			435	36.67	36.7	1.007	8.43	4.215	4.24	54#
			452.4875	36.62	36.7	1.019	8.76	4.38	4.46	55#
			469.9875	35.92	36.7	1.197	5.33	2.665	3.19	56#
	4FSK 12.5 kHz	Antenna 1 (350-400MHz)	350.0125	/	/	/	/	/	/	/
			362.5125	36.64	36.7	1.014	3.74	1.87	1.90	57#
			375.0125	/	/	/	/	/	/	/
			387.4875	/	/	/	/	/	/	/
			399.9875	/	/	/	/	/	/	/
		Antenna 2 (400-470MHz)	400.0125	/	/	/	/	/	/	/
			417.5125	/	/	/	/	/	/	/
			435	/	/	/	/	/	/	/
452.4875			36.63	36.7	1.016	3.76	1.88	1.91	58#	
469.9875			/	/	/	/	/	/	/	

The data above were tested on 2021/07/29.

Test Mode		Antenna	Frequency (MHz)	Max. Meas. Power (dBm)	Maximum output Power(dBm)	1 g SAR Value(W/kg)				
						Scaled Factor	Meas. SAR	50%	Scaled SAR	Plot
Body Back (0 mm)	FM 12.5 kHz	Antenna 1 (350-400MHz)	350.0125	36.57	36.7	1.03	6.46	3.23	3.33	59#
			362.5125	36.63	36.7	1.016	8.99	4.495	4.57	60#
			375.0125	36.43	36.7	1.064	5.45	2.725	2.90	61#
			387.4875	36.36	36.7	1.081	2.92	1.46	1.58	62#
			399.9875	36.15	36.7	1.135	2	1	1.14	63#
		Antenna 2 (400-470MHz)	400.0125	36.27	36.7	1.104	8.48	4.24	4.68	64#
			417.5125	36.43	36.7	1.064	9.2	4.6	4.89	65#
			435	36.68	36.7	1.005	9.46	4.73	4.75	66#
			452.4875	36.56	36.7	1.033	10.2	5.1	5.27	67#
			469.9875	35.65	36.7	1.274	5.76	2.88	3.67	68#
	FM 25 kHz	Antenna 1 (350-400MHz)	350.0125	36.54	36.7	1.038	6.77	3.385	3.51	69#
			362.5125	36.65	36.7	1.012	9.08	4.54	4.59	70#
			375.0125	36.48	36.7	1.052	5.36	2.68	2.82	71#
			387.4875	36.27	36.7	1.104	3.97	1.985	2.19	72#
			399.9875	36.13	36.7	1.14	2.09	1.045	1.19	73#
		Antenna 2 (400-470MHz)	400.0125	36.28	36.7	1.102	7.91	3.955	4.36	74#
			417.5125	36.42	36.7	1.067	8.6	4.3	4.59	75#
			435	36.67	36.7	1.007	9.44	4.72	4.75	76#
			452.4875	36.62	36.7	1.019	10.1	5.05	5.15	77#
			469.9875	35.92	36.7	1.197	5.75	2.875	3.44	78#
	4FSK 12.5 kHz	Antenna 1 (350-400MHz)	350.0125	/	/	/	/	/	/	/
			362.5125	36.64	36.7	1.014	4.25	2.125	2.15	79#
			375.0125	/	/	/	/	/	/	/
			387.4875	/	/	/	/	/	/	/
			399.9875	/	/	/	/	/	/	/
		Antenna 2 (400-470MHz)	400.0125	/	/	/	/	/	/	/
			417.5125	/	/	/	/	/	/	/
			435	/	/	/	/	/	/	/
			452.4875	36.63	36.7	1.016	4.96	2.48	2.52	80#
			469.9875	/	/	/	/	/	/	/

The data above were tested on 2021/07/29.

Note:

1. When the 1-g SAR is $\leq 3.5W/kg$, testing for other channels are optional.
2. KDB 447498 D01 - A duty factor of 50% should be applied to determine compliance for radios with maximum operating duty factors $\leq 50\%$. The 50% duty factor only applies to exposure conditions where the radio operates with a mechanical PTT button.
3. The whole antenna and radiating structures that may contribute to the measured SAR or influence the SAR distribution has been included in the area scan.

SAR SIMULTANEOUS TRANSMISSION DESCRIPTION

Simultaneous Transmission:

Description of Simultaneous Transmit Capabilities		
Transmitter Combination	Simultaneous?	Hotspot?
PTT + Bluetooth	√	×

Simultaneous and Hotspot SAR test exclusion considerations:

Mode(SAR1+SAR2)	Tested Model	Position	Reported SAR(W/kg)		Mixed SAR Limit (Sum of SAR-to-limit ratios)	ΣSAR < 8.0W/kg
			SAR1	SAR2		
PTT + Bluetooth	HP782 Uv	Face Up	4.17	0.04	0.55	4.21
		Body Back	4.80	0.21	0.73	5.01
	HP702 Uv	Face Up	4.46	0.04	0.58	4.50
		Body Back	5.27	0.21	0.79	5.48

Note:

- 1, KDB 447498 D01, Occupational exposure limits do not apply to consumer devices and radio services intended for supporting public networks or Part 15 unlicensed operations, thus the limits is 1.6W/kg for Bluetooth and 8.0W/kg for PTT(PLMRS).
- 2, The initial simultaneous transmission SAR test exclusion is to be based on ratios of SAR to the applicable limit for each transmit mode (similar to basic concept of ratios for "mixed limits" in 7.2 of KDB Pub. 447498 D01 v06 and FCC-13-39).

Conclusion:

The **sum of SAR-to-limit ratios** is less than 1.0, thus additional analysis or simultaneous-transmit extended-volume-scan SAR is not needed.

SAR Measurement Variability

In accordance with published RF Exposure KDB procedure 865664 D01 SAR measurement 100 MHz to 6 GHz v01. These additional measurements are repeated after the completion of all measurements requiring the same head or body tissue-equivalent medium in a frequency band.. The test device should be returned to ambient conditions (normal room temperature) with the battery fully charged before it is re-mounted on the device holder for the repeated measurement(s) to minimize any unexpected variations in the repeated results

- 1) Repeated measurement is not required when the original highest measured SAR is < 0.80 W/kg.
- 2) When the original highest measured SAR is ≥ 0.80 W/kg, repeat that measurement once.
- 3) Perform a second repeated measurement only if the ratio of largest to smallest SAR for the original and first repeated measurements is > 1.20 or when the original or repeated measurement is ≥ 1.45 W/kg (~ 10% from the 1-g SAR limit).
- 4) Perform a third repeated measurement only if the original, first or second repeated measurement is ≥ 1.5 W/kg and the ratio of largest to smallest SAR for the original, first and second repeated measurements is > 1.20.
- 5) The same procedures should be adapted for measurements according to occupational exposure limits by applying a factor of 2.5 for extremity exposure and a factor of 5 for occupational exposure to the corresponding SAR thresholds.

Note: The same procedures should be adapted for measurements according to extremity and occupational exposure limits by applying a factor of 2.5 for extremity exposure and a factor of 5 for occupational exposure to the corresponding SAR thresholds.

The Highest Measured SAR Configuration in Each Frequency Band

Head(Face Up)

SAR probe calibration point	Frequency Band	Freq.(MHz)	EUT Position	Meas. SAR (W/kg)		Largest to Smallest SAR Ratio
				Original	Repeated	
/	/	/	/	/	/	/

Body(Body Back)

SAR probe calibration point	Frequency Band	Freq.(MHz)	EUT Position	Meas. SAR (W/kg)		Largest to Smallest SAR Ratio
				Original	Repeated	
450MHz (350-550MHz)	HP782 Uv_FM_25kHz Antenna1	362.5125	Body Back	8.52	8.41	1.01
	HP782 Uv_FM_12.5kHz Antenna2	435	Body Back	9.49	9.42	1.01
	HP702 Uv_FM_25kHz Antenna1	362.5125	Body Back	9.08	8.86	1.02
	HP702 Uv_FM_12.5kHz Antenna2	452.4875	Body Back	10.2	10.1	1.01

Note:

1. Second Repeated Measurement is not required since the ratio of the largest to smallest SAR for the original and first repeated measurement is not > 1.20.
2. The measured SAR results **do not** have to be scaled to the maximum tune-up tolerance to determine if repeated measurements are required.
3. SAR measurement variability must be assessed for each frequency band, which is determined by the **SAR probe calibration point and tissue-equivalent medium** used for the device measurements.

SAR Plots

Please Refer to the Attachment.

APPENDIX A MEASUREMENT UNCERTAINTY

The uncertainty budget has been determined for the measurement system and is given in the following Table.

Measurement uncertainty evaluation for IEEE1528-2013 SAR test

Source of uncertainty	Tolerance/ uncertainty ± %	Probability distribution	Divisor	ci (1 g)	ci (10 g)	Standard uncertainty ± %, (1 g)	Standard uncertainty ± %, (10 g)
Measurement system							
Probe calibration	6.55	N	1	1	1	6.6	6.6
Axial Isotropy	4.7	R	$\sqrt{3}$	1	1	2.7	2.7
Hemispherical Isotropy	9.6	R	$\sqrt{3}$	0	0	0.0	0.0
Boundary effect	1.0	R	$\sqrt{3}$	1	1	0.6	0.6
Linearity	4.7	R	$\sqrt{3}$	1	1	2.7	2.7
Detection limits	1.0	R	$\sqrt{3}$	1	1	0.6	0.6
Readout electronics	0.3	N	1	1	1	0.3	0.3
Response time	0.0	R	$\sqrt{3}$	1	1	0.0	0.0
Integration time	0.0	R	$\sqrt{3}$	1	1	0.0	0.0
RF ambient conditions – noise	1.0	R	$\sqrt{3}$	1	1	0.6	0.6
RF ambient conditions–reflections	1.0	R	$\sqrt{3}$	1	1	0.6	0.6
Probe positioner mech. Restrictions	0.8	R	$\sqrt{3}$	1	1	0.5	0.5
Probe positioning with respect to phantom shell	6.7	R	$\sqrt{3}$	1	1	3.9	3.9
Post-processing	2.0	R	$\sqrt{3}$	1	1	1.2	1.2
Test sample related							
Test sample positioning	2.8	N	1	1	1	2.8	2.8
Device holder uncertainty	6.3	N	1	1	1	6.3	6.3
Drift of output power	5.0	R	$\sqrt{3}$	1	1	2.9	2.9
Phantom and set-up							
Phantom uncertainty (shape and thickness tolerances)	4.0	R	$\sqrt{3}$	1	1	2.3	2.3
Liquid conductivity target)	5.0	R	$\sqrt{3}$	0.64	0.43	1.8	1.2
Liquid conductivity meas.)	2.5	N	1	0.64	0.43	1.6	1.1
Liquid permittivity target)	5.0	R	$\sqrt{3}$	0.6	0.49	1.7	1.4
Liquid permittivity meas.)	2.5	N	1	0.6	0.49	1.5	1.2
Combined standard uncertainty		RSS				12.2	12.0
Expanded uncertainty 95 % confidence interval)						24.3	23.9

Measurement uncertainty evaluation for IEC62209-1 SAR test

Source of uncertainty	Tolerance/uncertainty ± %	Probability distribution	Divisor	ci (1 g)	ci (10 g)	Standard uncertainty ± %, (1 g)	Standard uncertainty ± %, (10 g)
Measurement system							
Probe calibration	6.55	N	1	1	1	6.6	6.6
Axial Isotropy	4.7	R	√3	1	1	2.7	2.7
Hemispherical Isotropy	9.6	R	√3	0	0	0.0	0.0
Boundary effect	1.0	R	√3	1	1	0.6	0.6
Linearity	4.7	R	√3	1	1	2.7	2.7
Detection limits	1.0	R	√3	1	1	0.6	0.6
Readout electronics	0.3	N	1	1	1	0.3	0.3
Response time	0.0	R	√3	1	1	0.0	0.0
Integration time	0.0	R	√3	1	1	0.0	0.0
RF ambient conditions – noise	1.0	R	√3	1	1	0.6	0.6
RF ambient conditions–reflections	1.0	R	√3	1	1	0.6	0.6
Probe positioner mech. Restrictions	0.8	R	√3	1	1	0.5	0.5
Probe positioning with respect to phantom shell	6.7	R	√3	1	1	3.9	3.9
Post-processing	2.0	R	√3	1	1	1.2	1.2
Test sample related							
Test sample positioning	2.8	N	1	1	1	2.8	2.8
Device holder uncertainty	6.3	N	1	1	1	6.3	6.3
Drift of output power	5.0	R	√3	1	1	2.9	2.9
Phantom and set-up							
Phantom uncertainty (shape and thickness tolerances)	4.0	R	√3	1	1	2.3	2.3
Liquid conductivity target)	5.0	R	√3	0.64	0.43	1.8	1.2
Liquid conductivity meas.)	2.5	N	1	0.64	0.43	1.6	1.1
Liquid permittivity target)	5.0	R	√3	0.6	0.49	1.7	1.4
Liquid permittivity meas.)	2.5	N	1	0.6	0.49	1.5	1.2
Combined standard uncertainty		RSS				12.2	12.0
Expanded uncertainty 95 % confidence interval)						24.3	23.9

APPENDIX B EUT TEST POSITION PHOTOS

Please Refer to the Attachment.

APPENDIX C CALIBRATION CERTIFICATES

Please Refer to the Attachment.

Declarations

1. BACL is not responsible for the authenticity of any test data provided by the applicant. Data included from the applicant that may affect test results are marked with a triangle symbol “△”. Customer model name, addresses, names, trademarks etc. are not considered data.
2. Unless otherwise stated the results shown in this test report refer only to the sample(s) tested.
3. Otherwise required by the applicant or Product Regulations, Decision Rule in this report did not consider the uncertainty.
4. The extended uncertainty given in this report is obtained by combining the standard uncertainty times the coverage factor K with the 95% confidence interval.
5. This report cannot be reproduced except in full, without prior written approval of the Company.
6. This report is valid only with a valid digital signature. The digital signature may be available only under the Adobe software above version 7.0.
7. This report must not be used by the customer to claim product certification, approval, or endorsement by A2LA, or any agency of the U.S. Government.
8. This report may contain data that are not covered by the accreditation scope and shall be marked with an asterisk “★”.

***** END OF REPORT *****