

## **EXHIBIT C - EUT INTERNAL PHOTOGRAPHS**

---

**EUT – Cover off View 1**



**EUT – Cover off View 2**



**EUT – Cover off View 3**



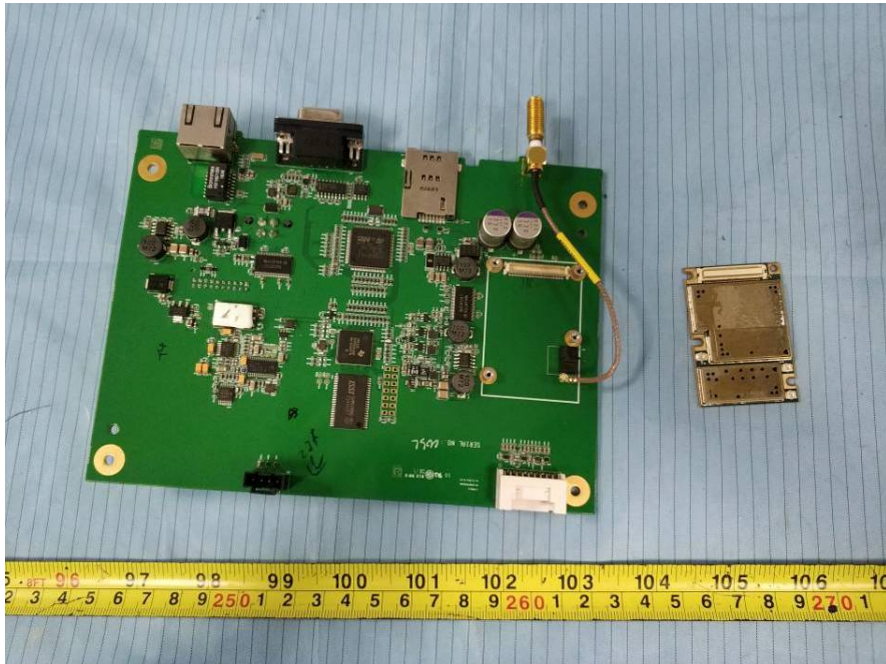
**EUT – Cover off View 4**



**EUT – Cover off View 5**



**EUT – Cover off View 6**



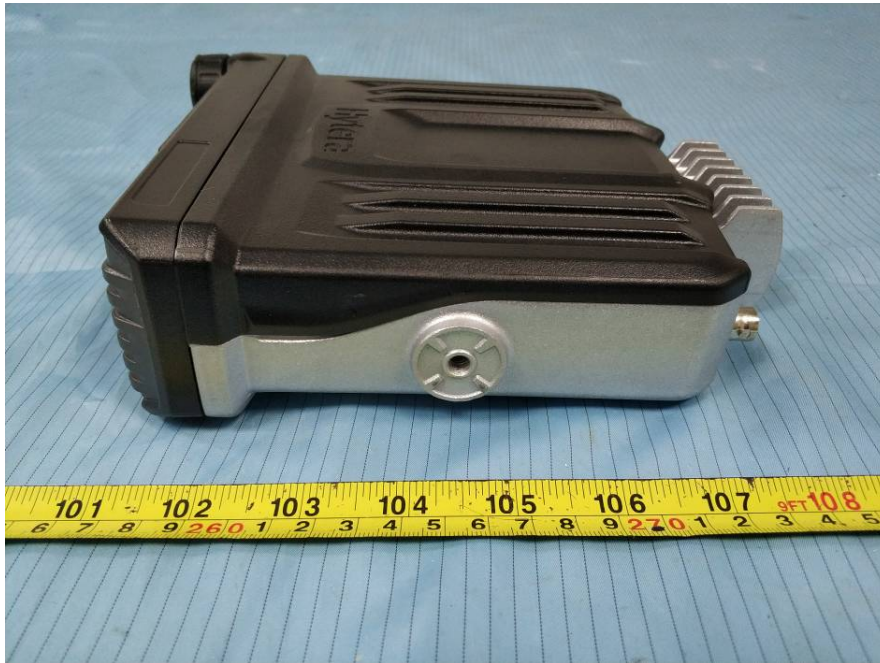
**EUT – Front View (RF Unit)**



**EUT – Rear View (RF Unit)**



**EUT – Left View (RF Unit)**



**EUT – Right View (RF Unit)**



**EUT – Top View (RF Unit)**



**EUT – Bottom View (RF Unit)**



**RF unit – Cover off View 1**



**RF unit – Cover off View 2**



**RF unit – Cover off View 3**



**RF unit – Cover off View 4**

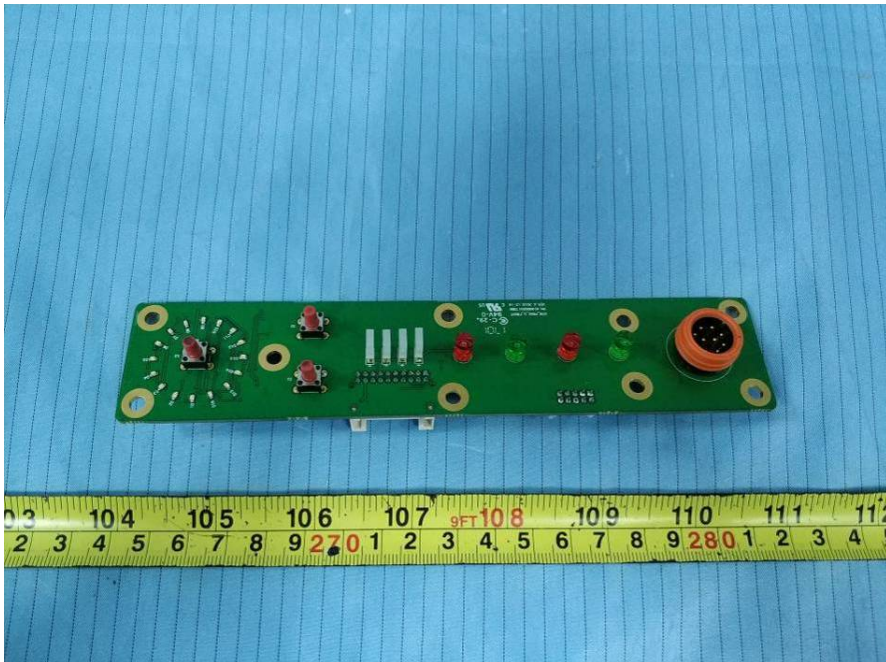




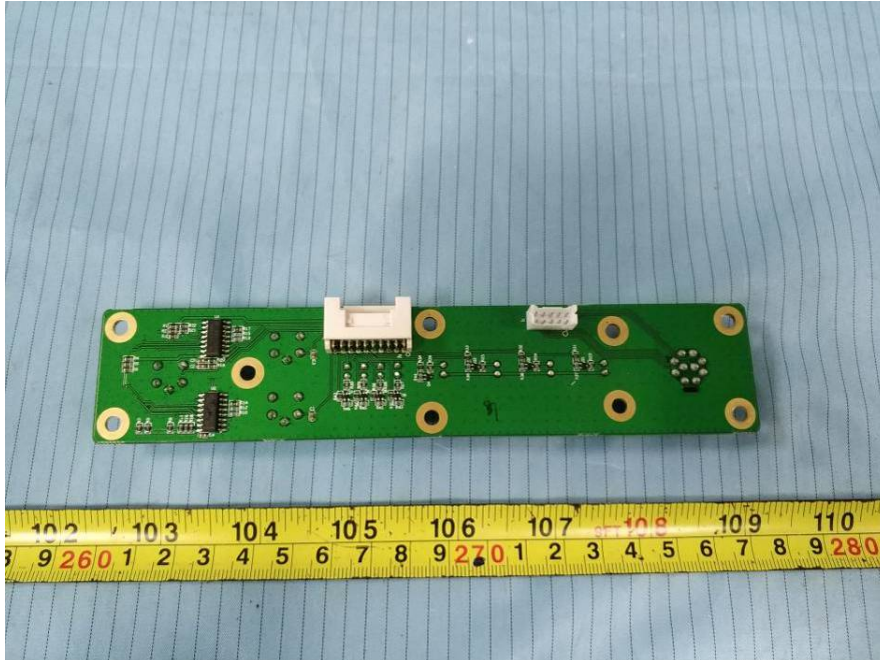
**RF unit – Cover off View 5**



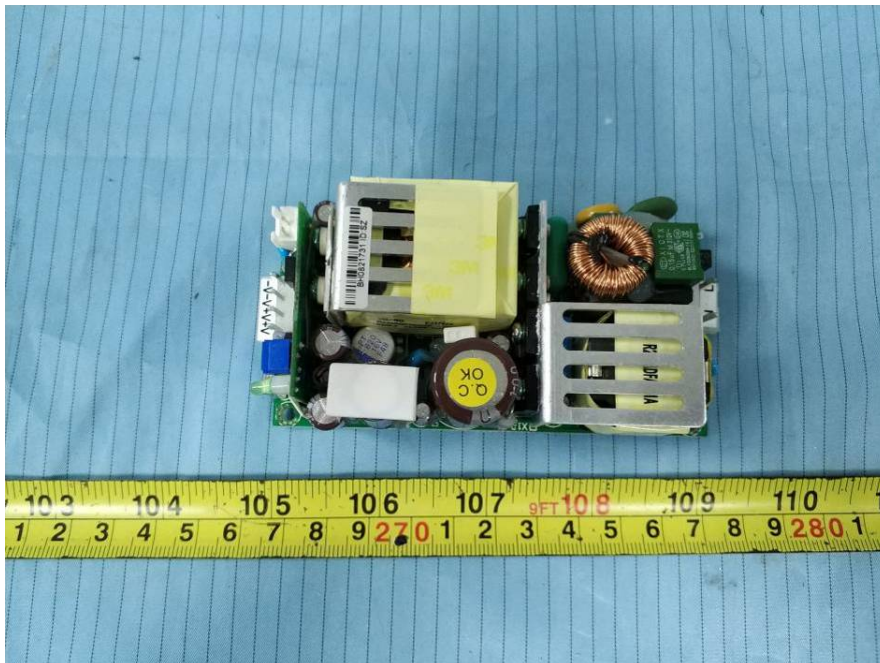
**EUT – PCB 1 Top View**



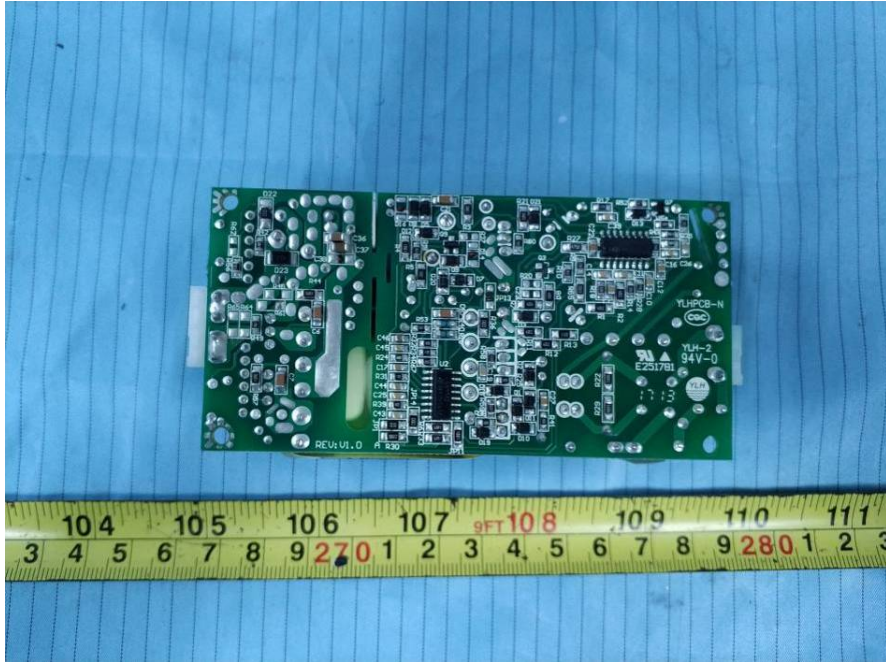
**EUT – PCB 1 Bottom View**



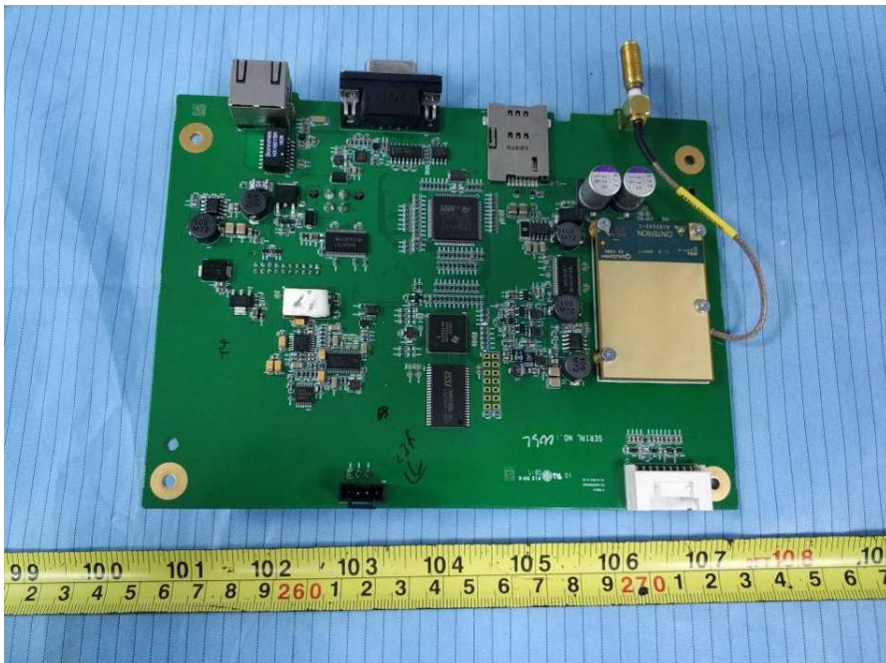
**EUT – PCB 2 Top View**



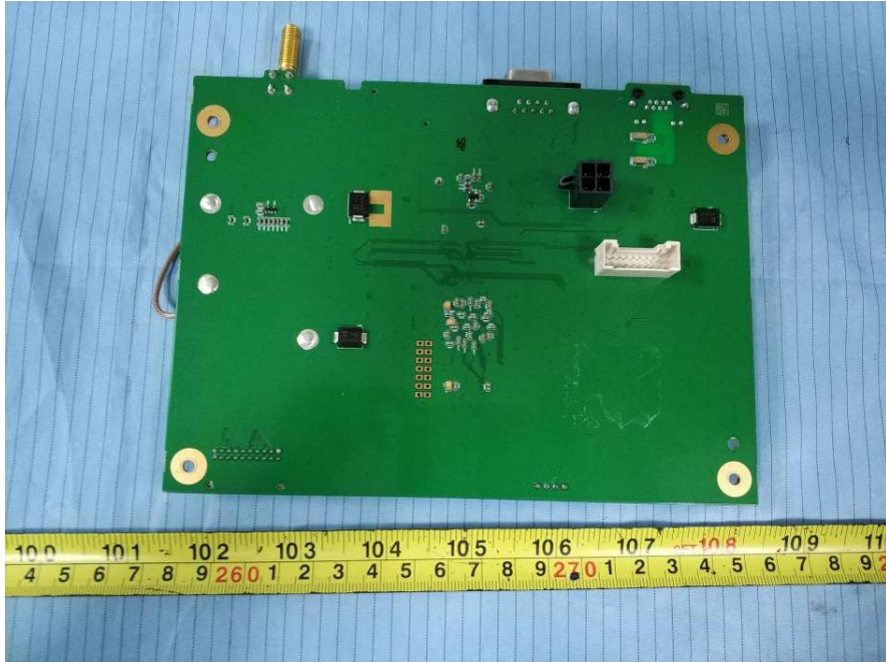
**EUT – PCB 2 Bottom View**



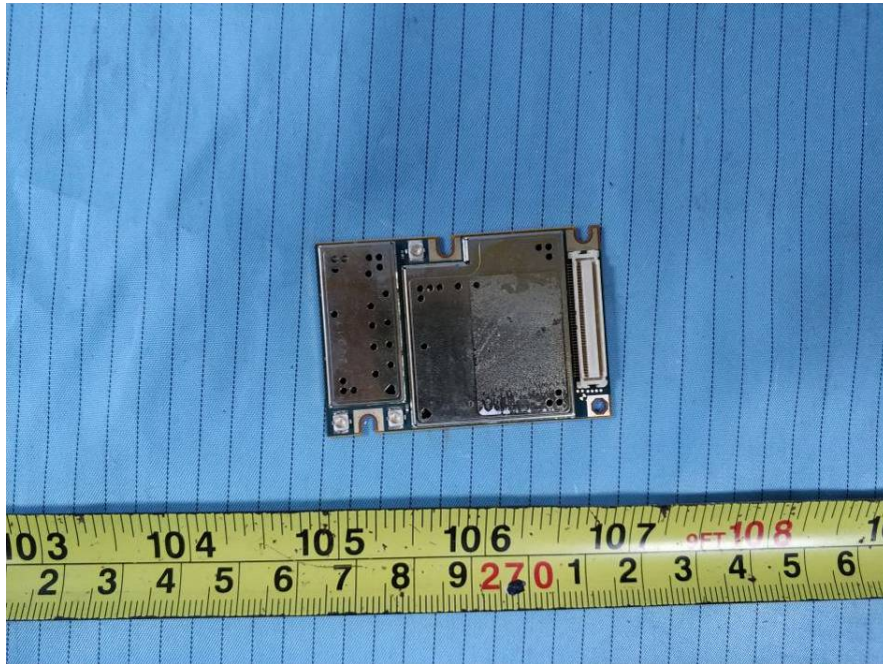
**EUT – PCB 3 Top View**



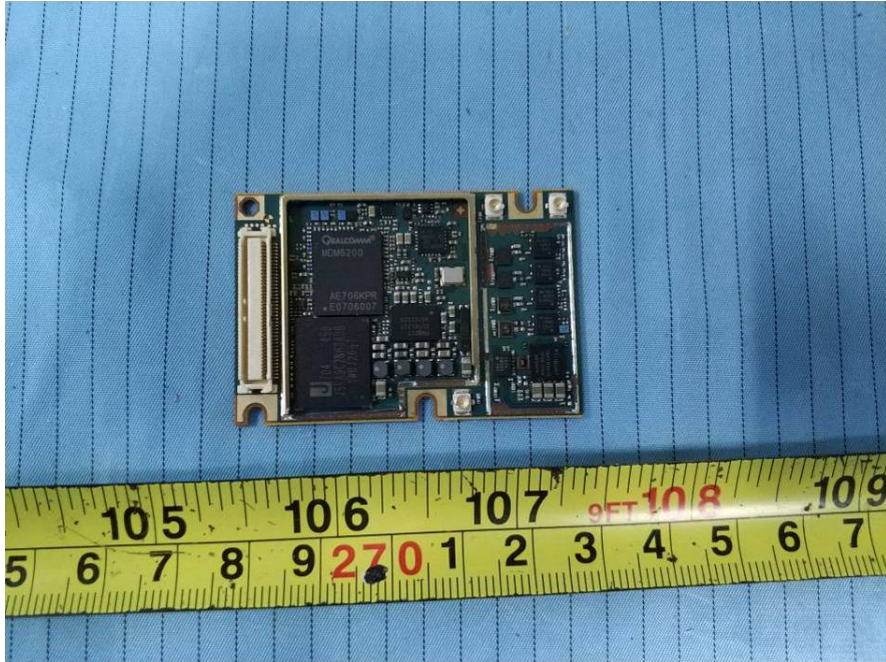
**EUT – PCB 3 Bottom View**



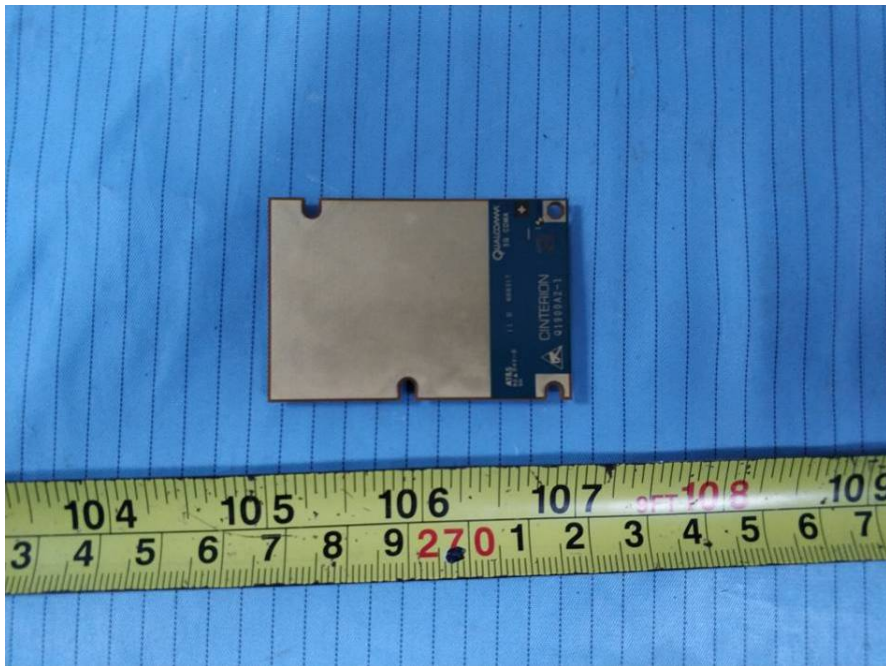
**EUT – PCB 4 Top View**



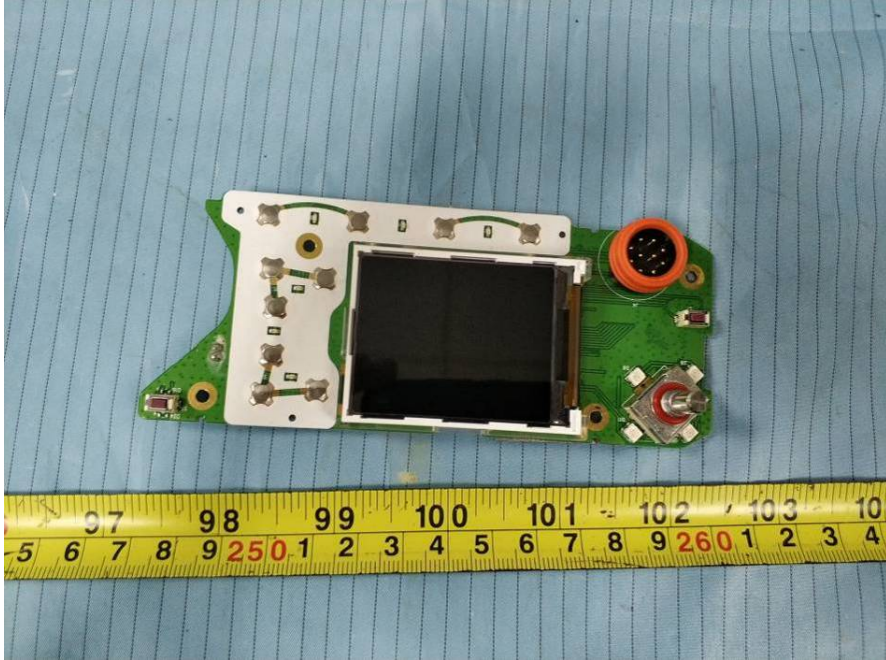
**EUT – PCB 4 Top Shielding off View**



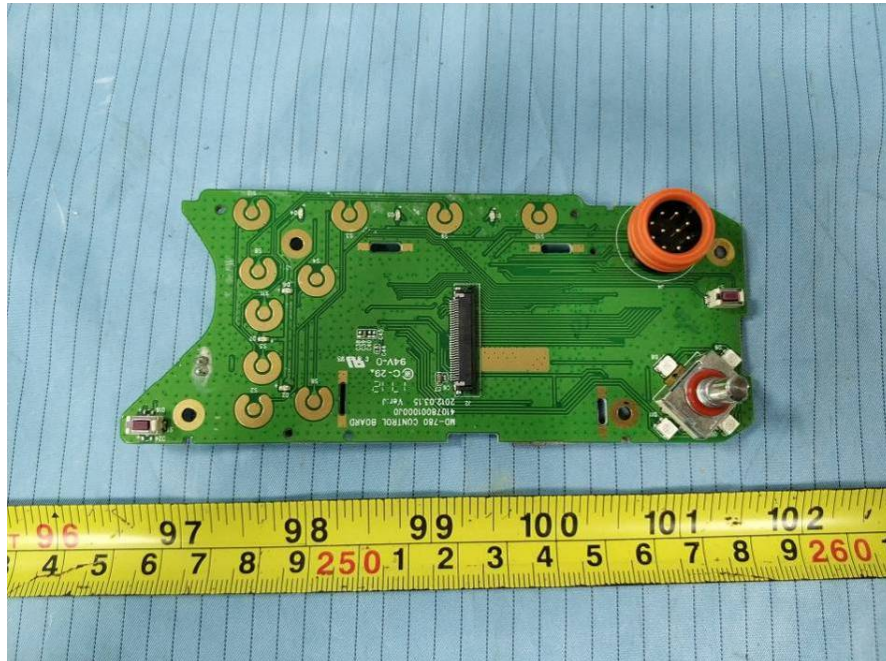
**EUT – PCB 4 Bottom View**



**EUT – PCB 5 Top View**



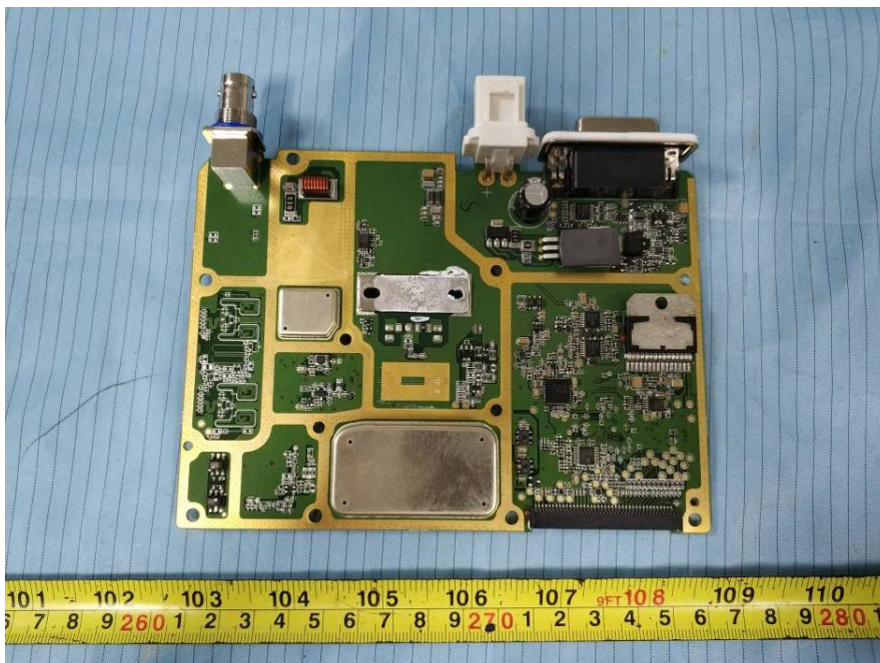
**EUT – PCB 5 Top Shielding off View**



**EUT – PCB 5 Bottom View**



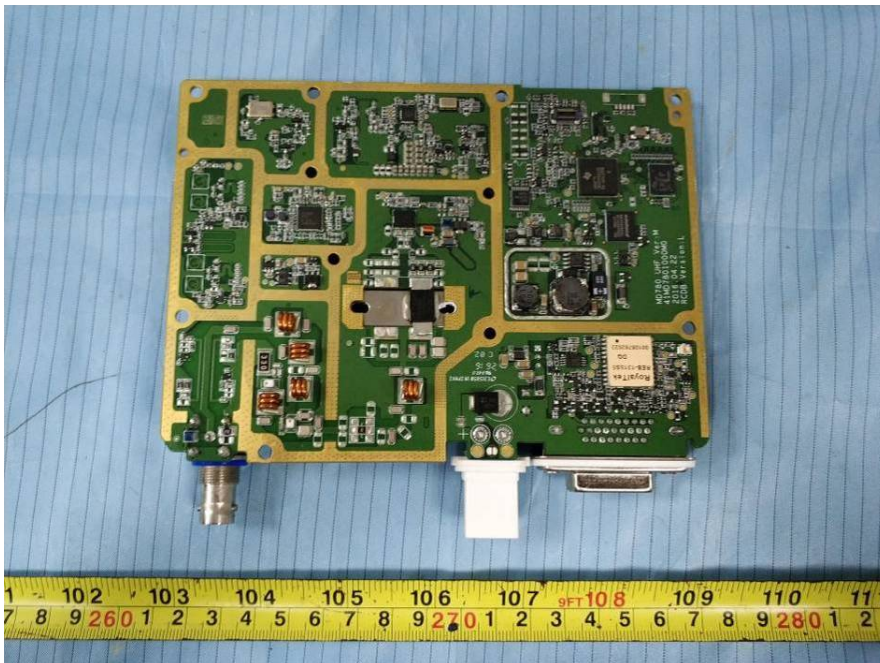
**EUT – PCB 6 Top View**



**EUT – PCB 6 Top Shielding off View**

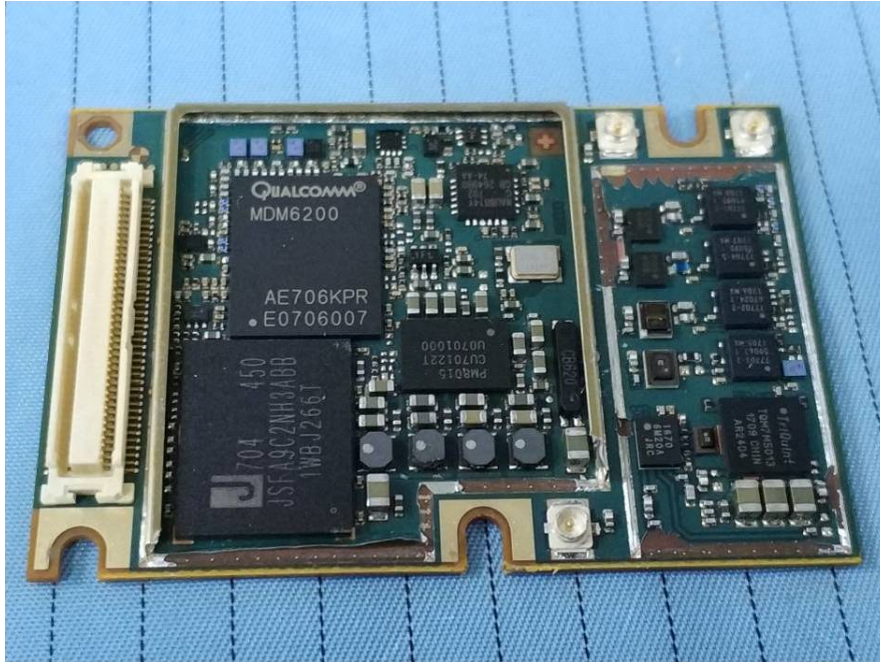


**EUT – PCB 6 Bottom View**

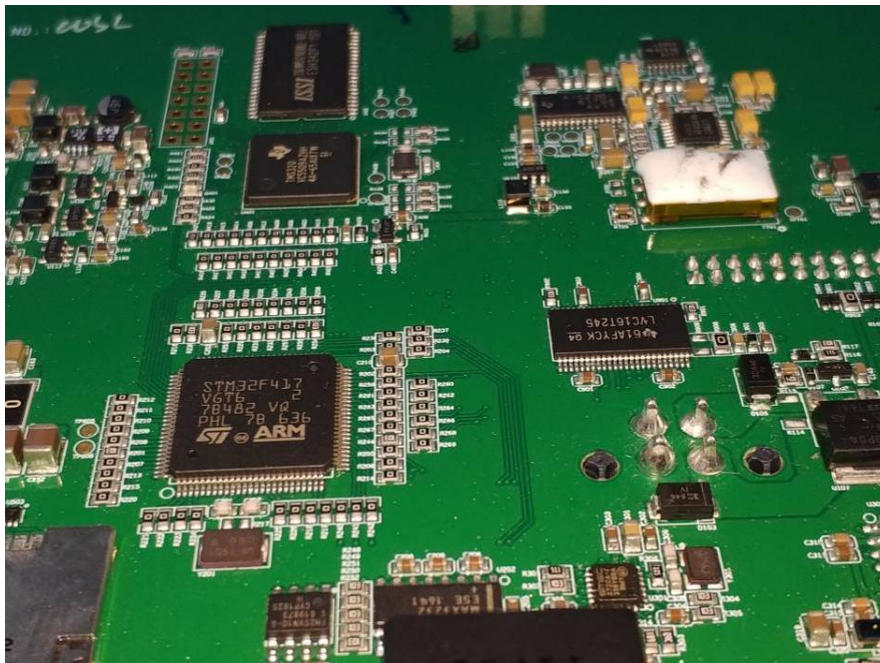




EUT – Main Chip 1 View



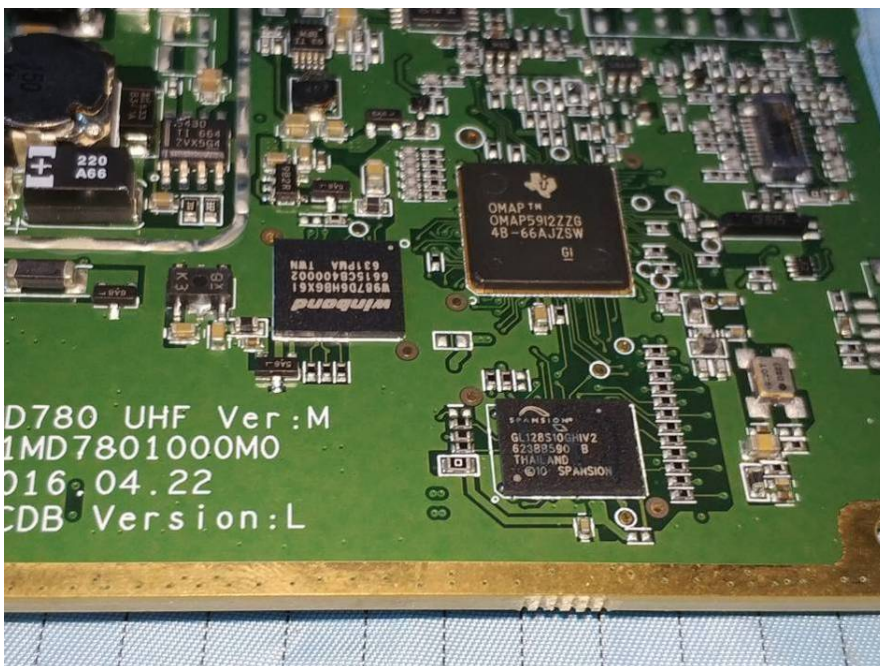
EUT – Main Chip 2 View



EUT – Main Chip 3 View



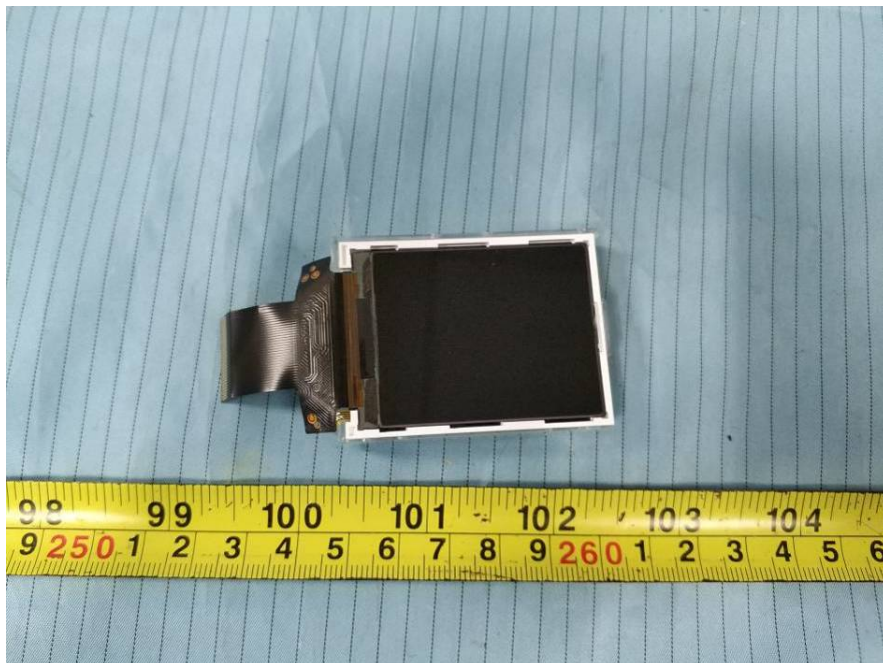
EUT – Main Chip 4 View



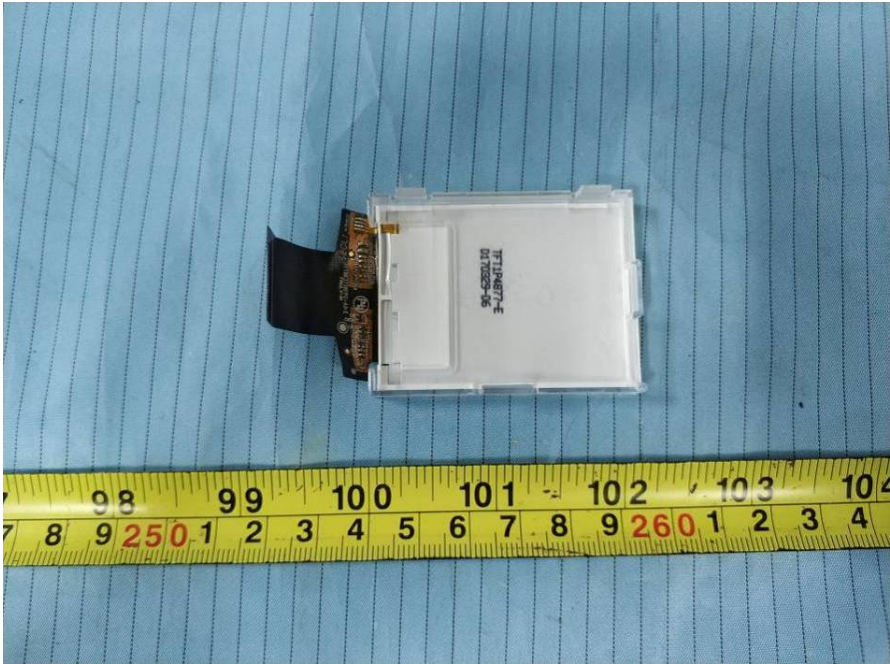
**EUT – Main Chip 5 View**



**EUT – LED Top View**



**EUT – LED Bottom View**



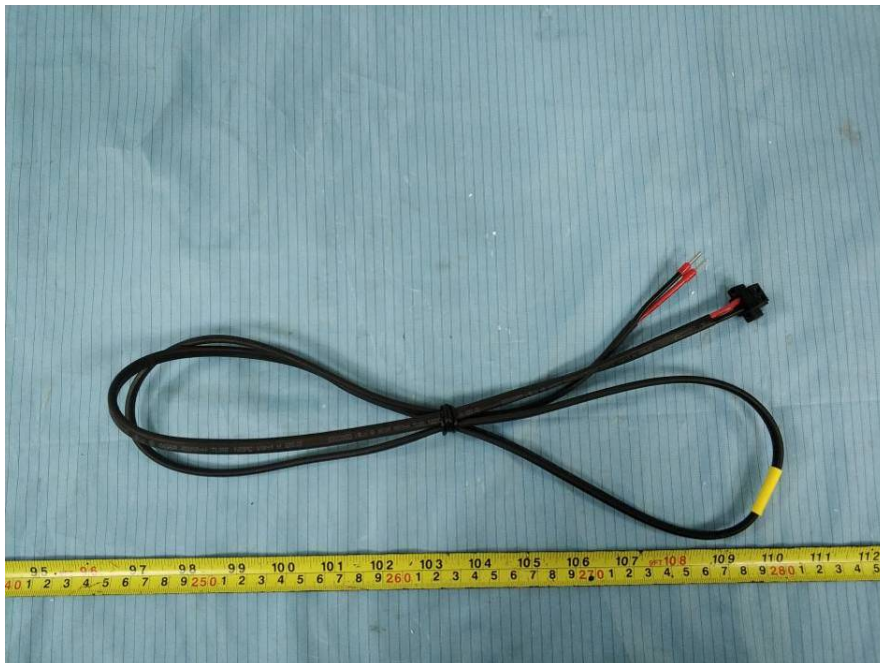
**EUT – Antenna 1 View**



**EUT – Antenna 2 View (GSM)**



**EUT – DC Cable View**



**EUT – AC Cable View**



**EUT – RJ45 Cable View**

